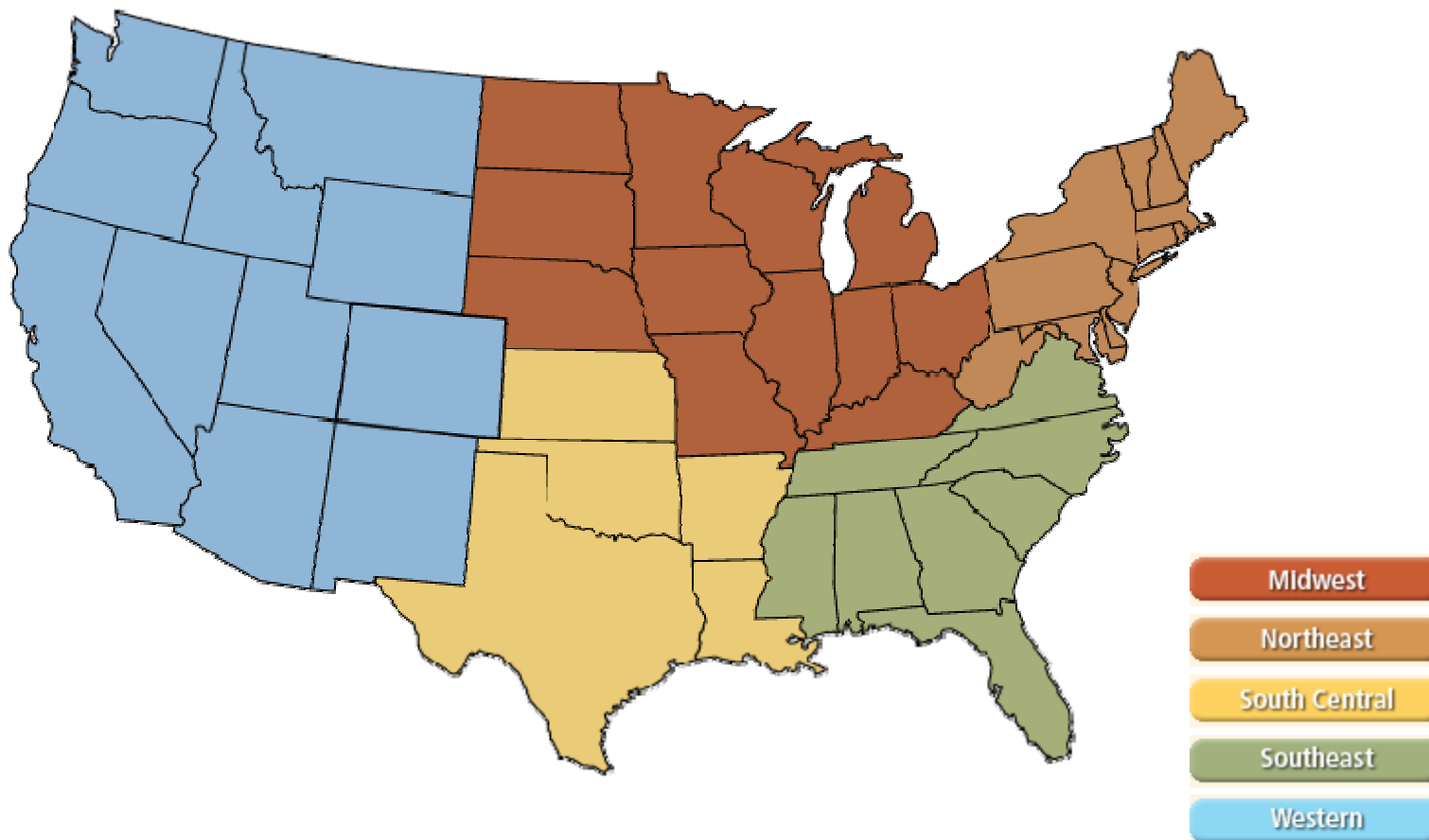
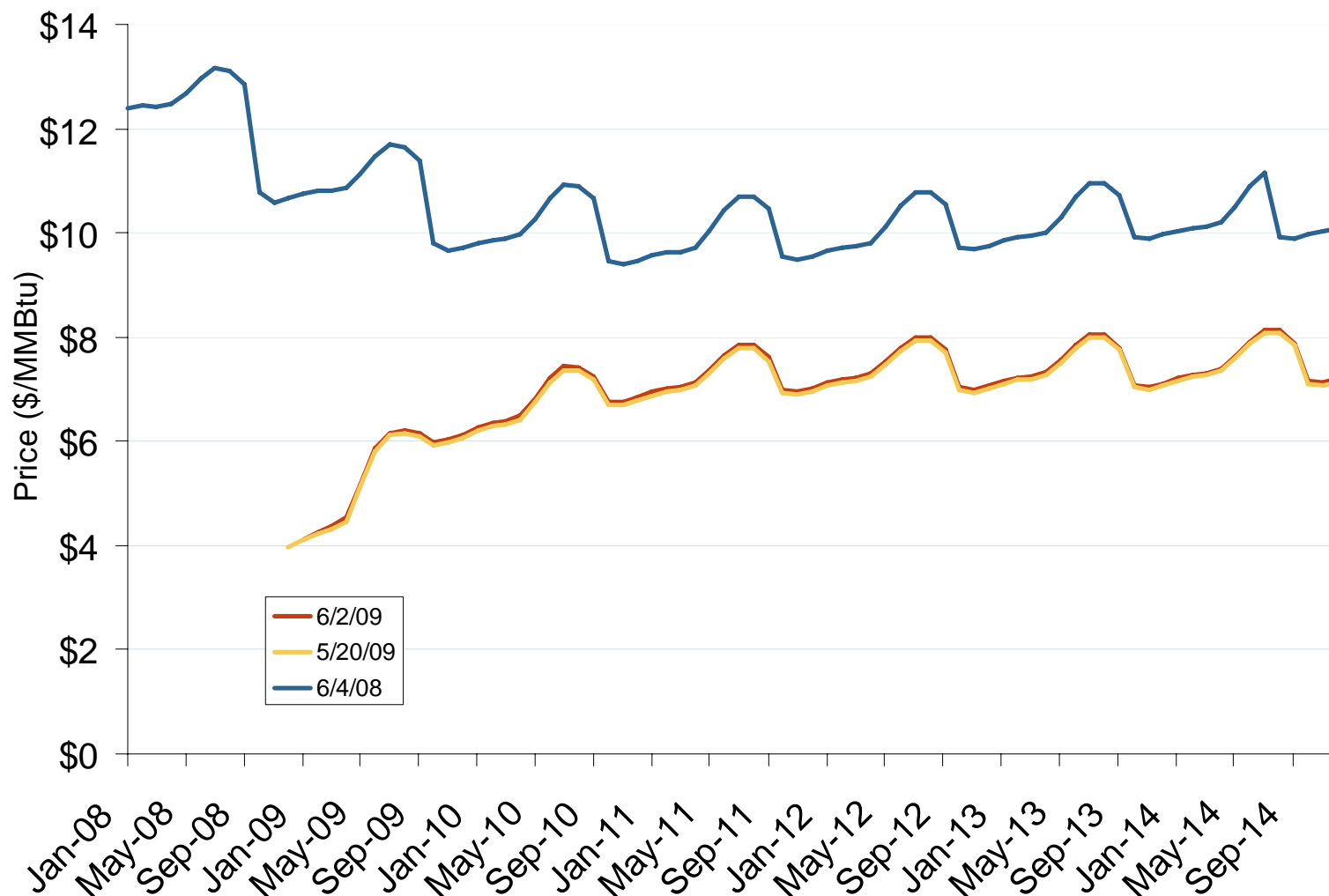


# Natural Gas Futures Trading Markets



## NYMEX Natural Gas Forward Price Curve

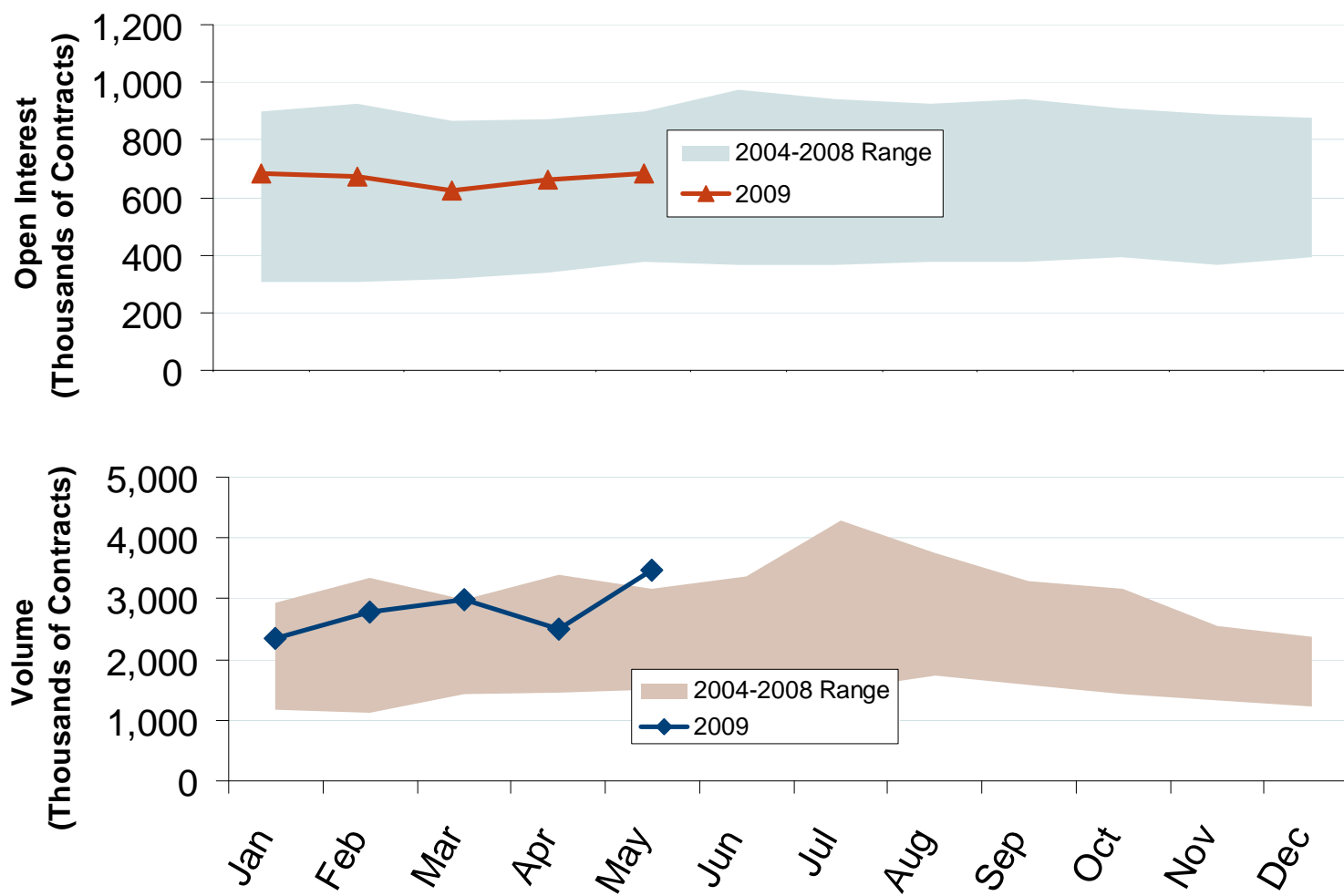


Source: Derived from NYMEX data.

Updated June 5, 2009

2009

## NYMEX Natural Gas Futures Month-End Open Interest and Total Monthly Volume



Source: Derived from NYMEX data.

Updated June 5, 2009

2010

## NYMEX Natural Gas Futures Prompt Month Daily Settlement Price and Price Range

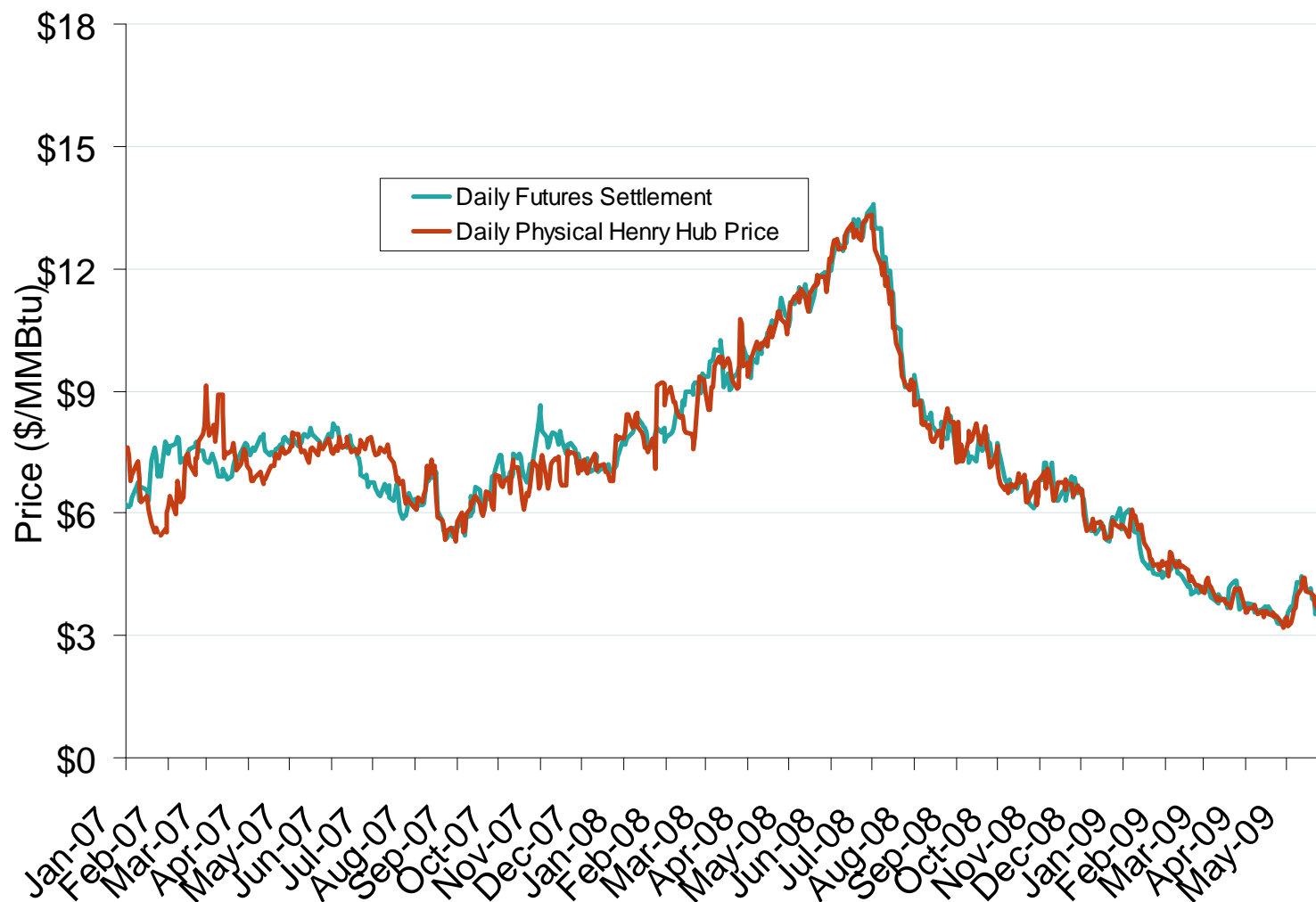


Source: Derived from NYMEX data.

Updated June 5, 2009

2086

## Daily Physical Index Price and Daily Futures Settlement Price

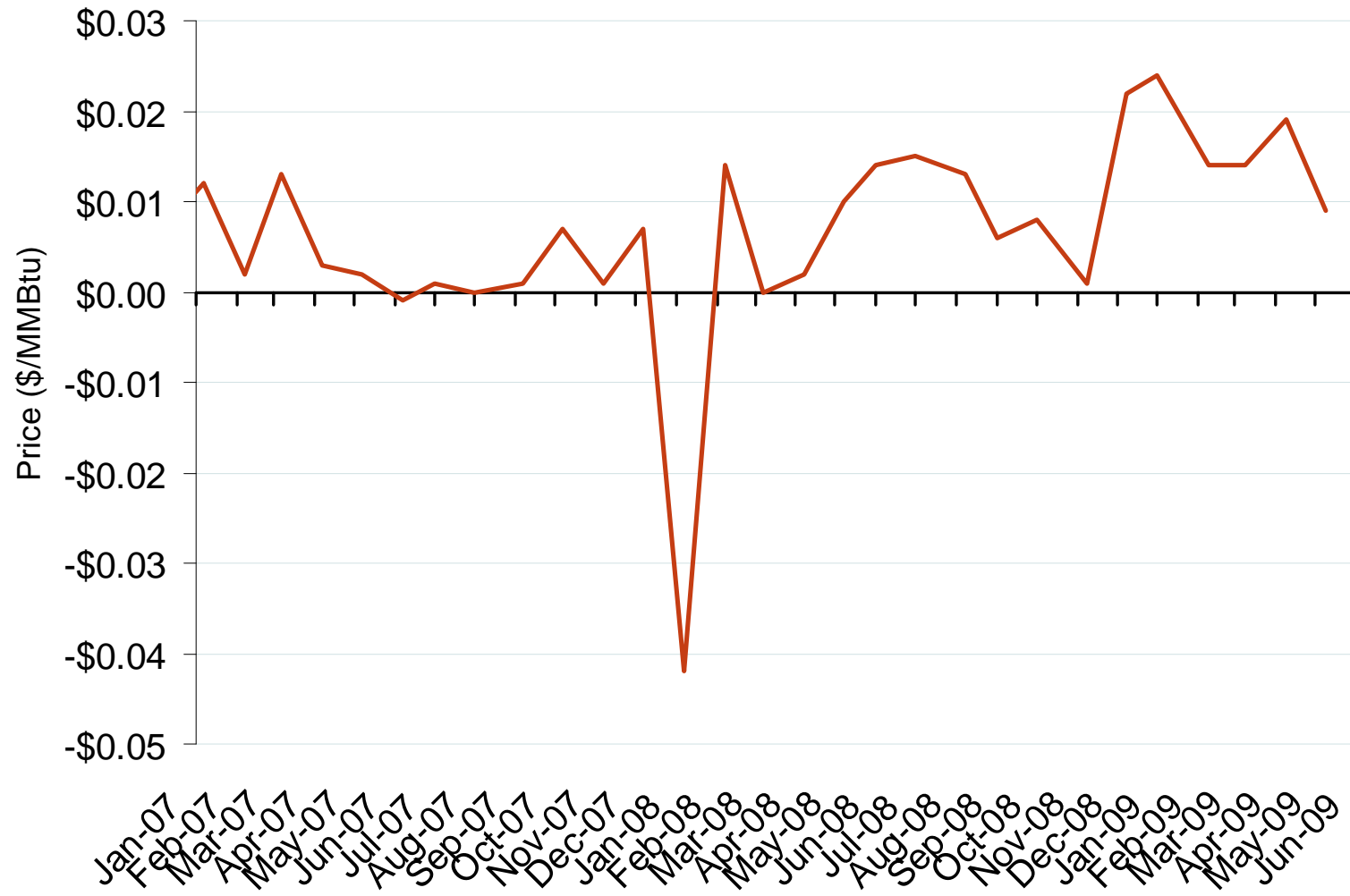


Source: Derived from *Platts* and *Bloomberg* data.

Updated June 5, 2009

2087

## Deviation Between Monthly Physical Index and Monthly Futures Expiration Price at Henry Hub

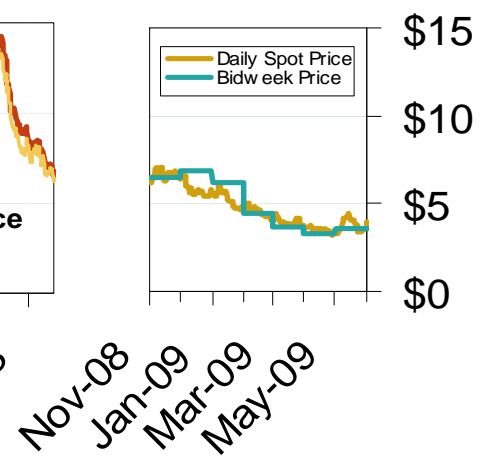
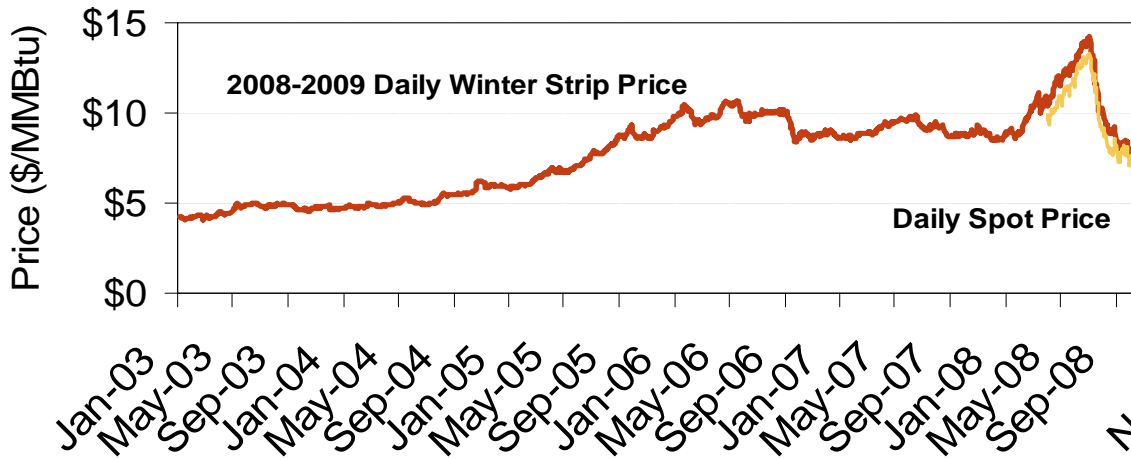
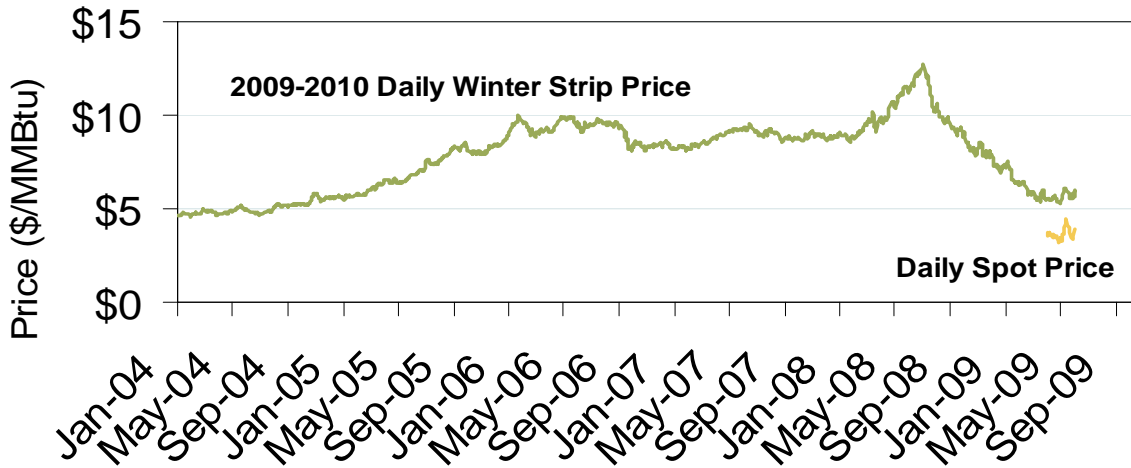


Source: Derived from *Platts* and *Bloomberg* data.

Updated June 5, 2009

2088

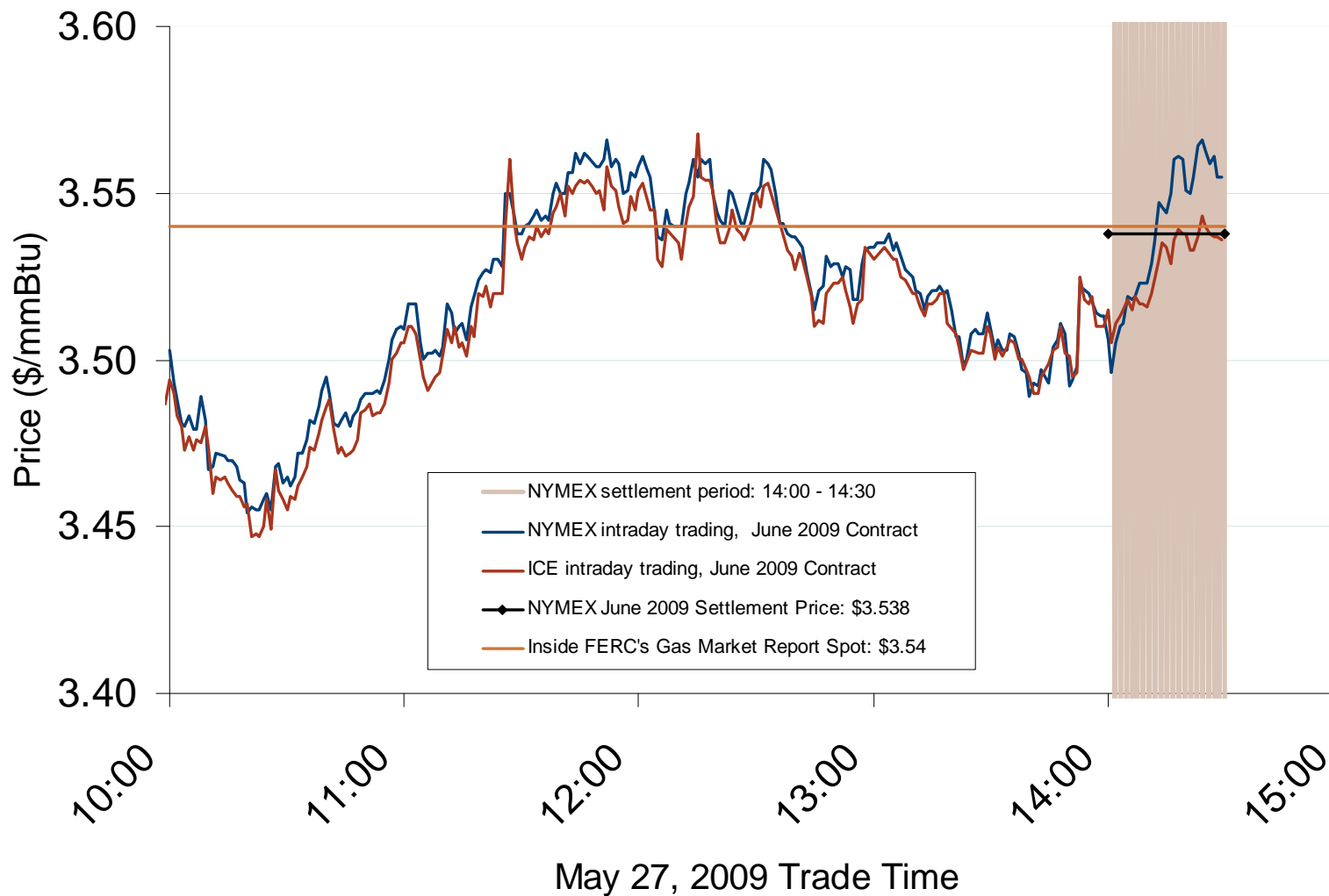
## Natural Gas Winter Futures Strip and Daily Henry Hub Spot and Bidweek Prices



Source: Derived from *Platts* and *Nymex* data.

Updated June 5, 2009

## June 2009 NYMEX and ICE Contract Final Settlement Day

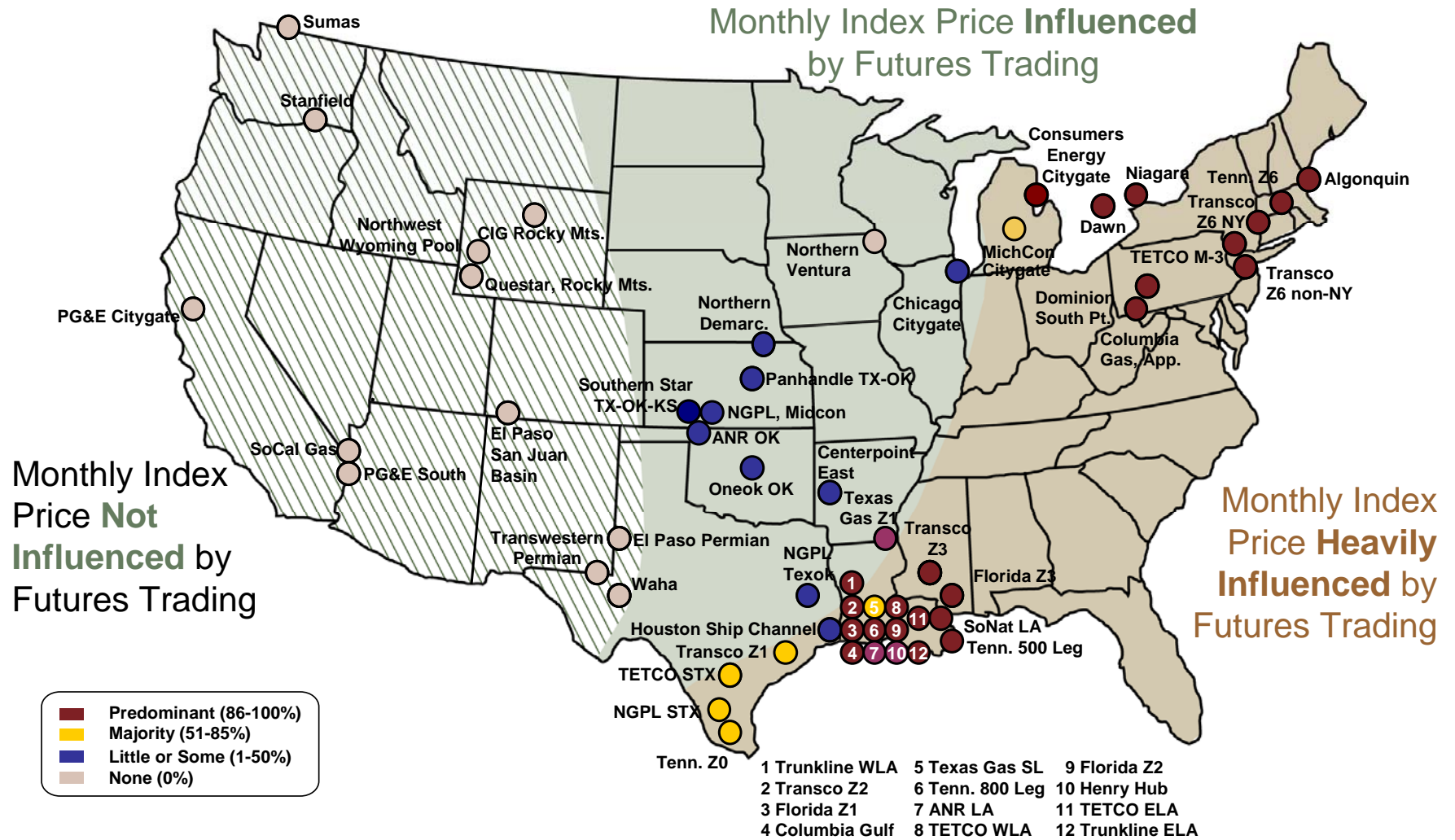
Source: Derived from *Nymex and ICE* data.

Updated June 1, 2009

2166



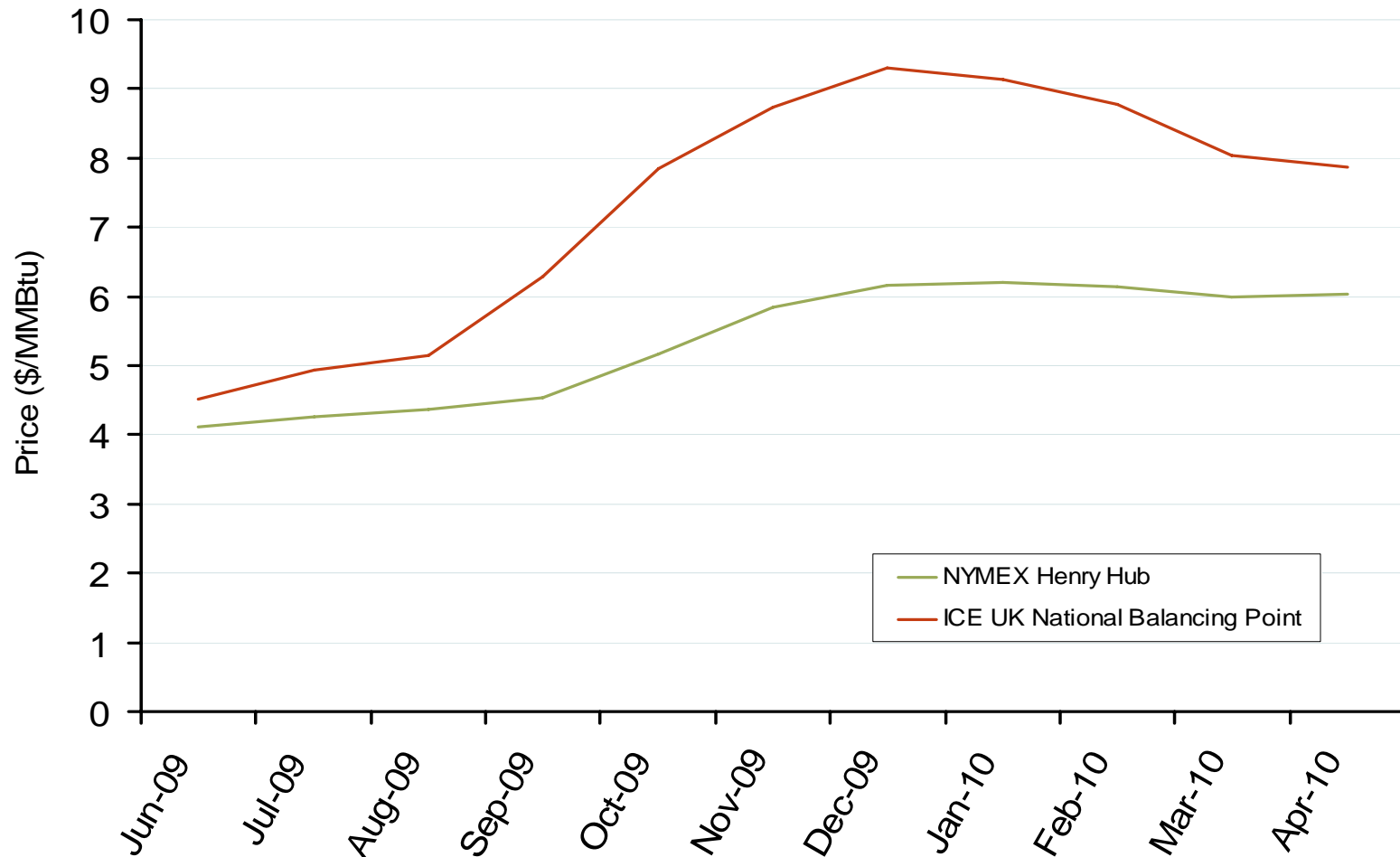
# Use of Physical Basis in Natural Gas Price Indices at Major Trading Points, 2009



Source: Derived from *Platts* data for January through June 2009 indices.

Updated June 9, 2009

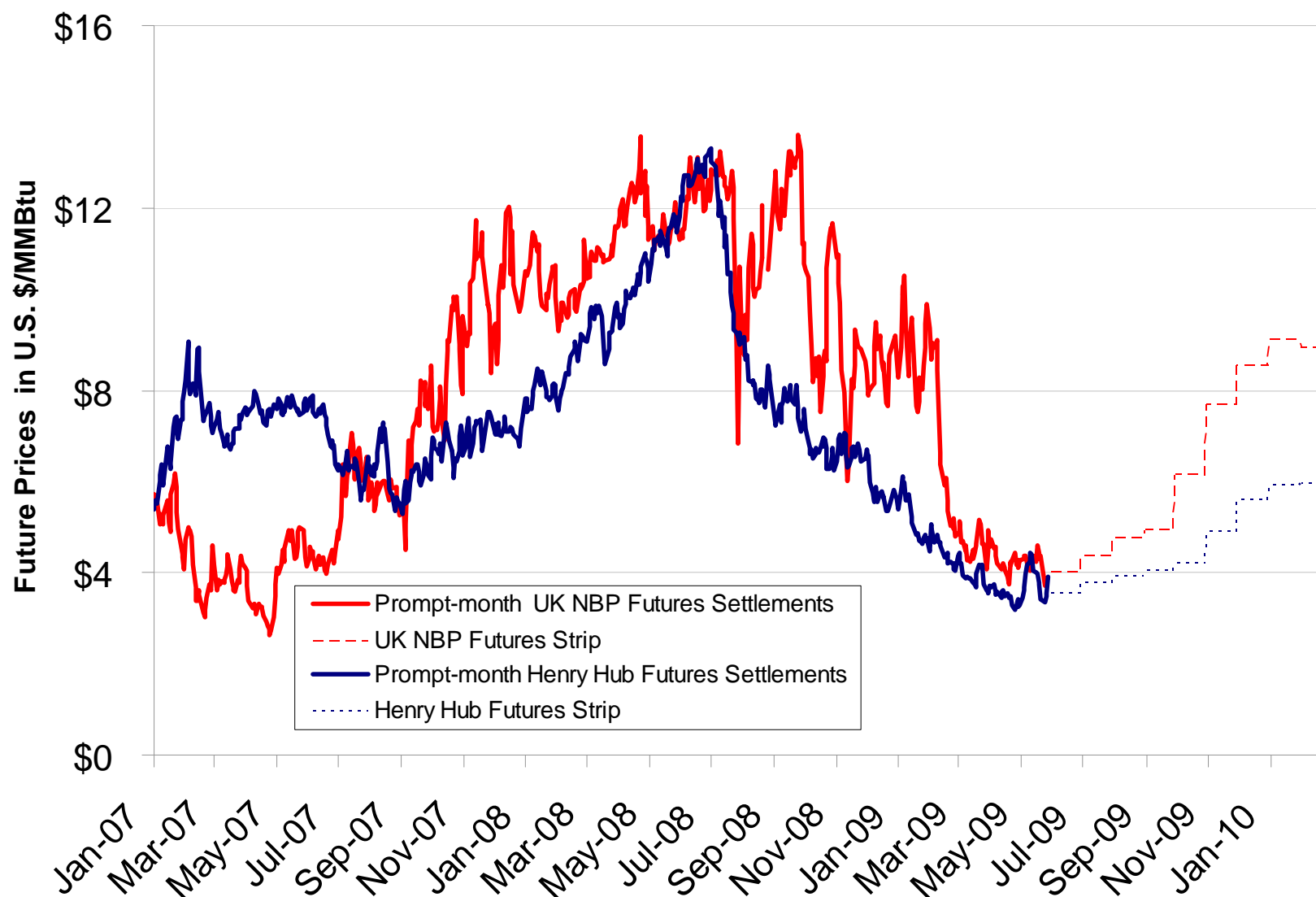
## NYMEX Henry Hub and ICE UK National Balancing Point Natural Gas Forward Price Curves

Source: Derived from *NYMEX* and *ICE* data.

Updated June 5, 2009

2170

## US and UK Gas Futures Prices



Source: Derived from NYMEX and ICE data.

Updated June 5, 2009

2177