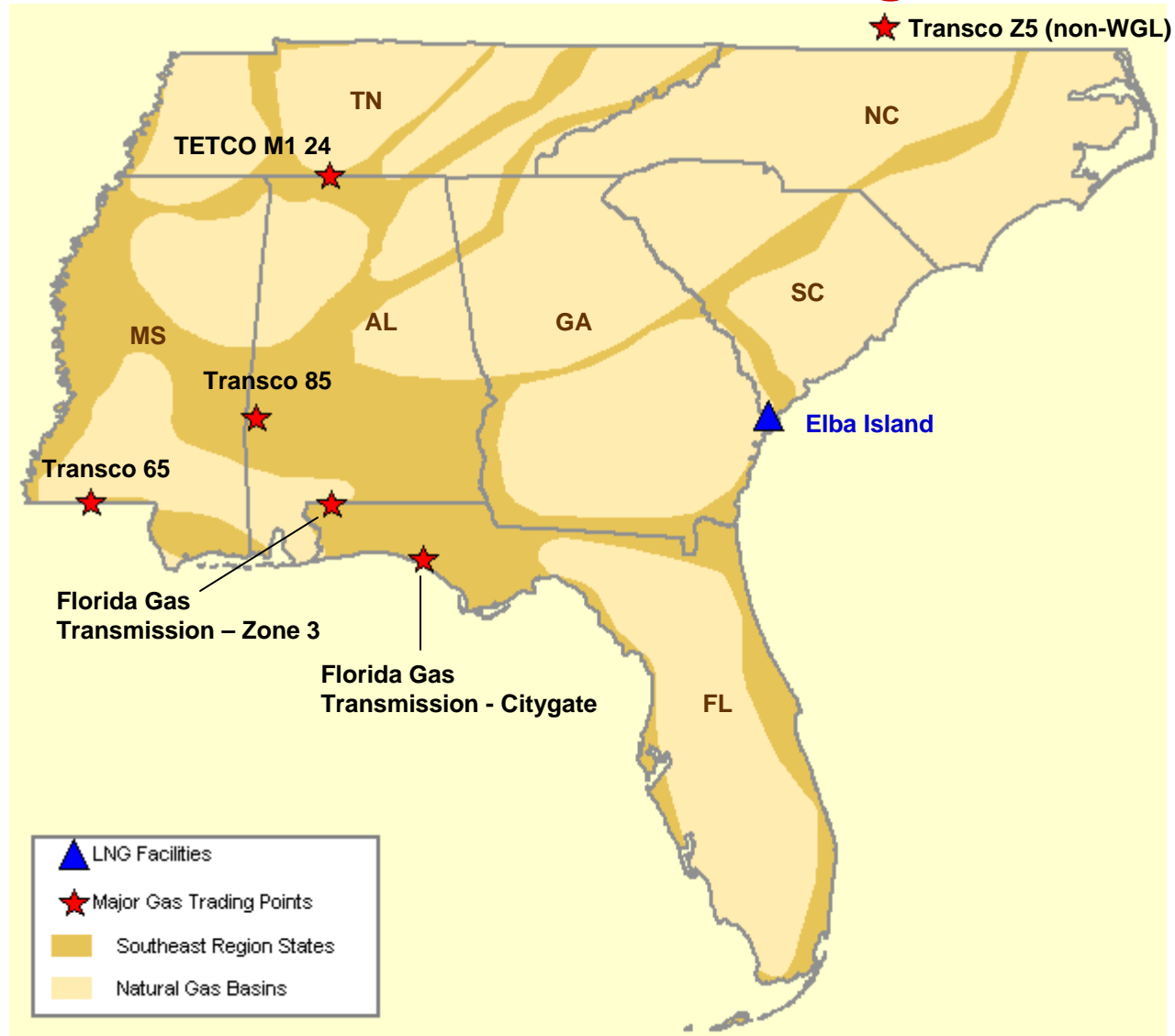


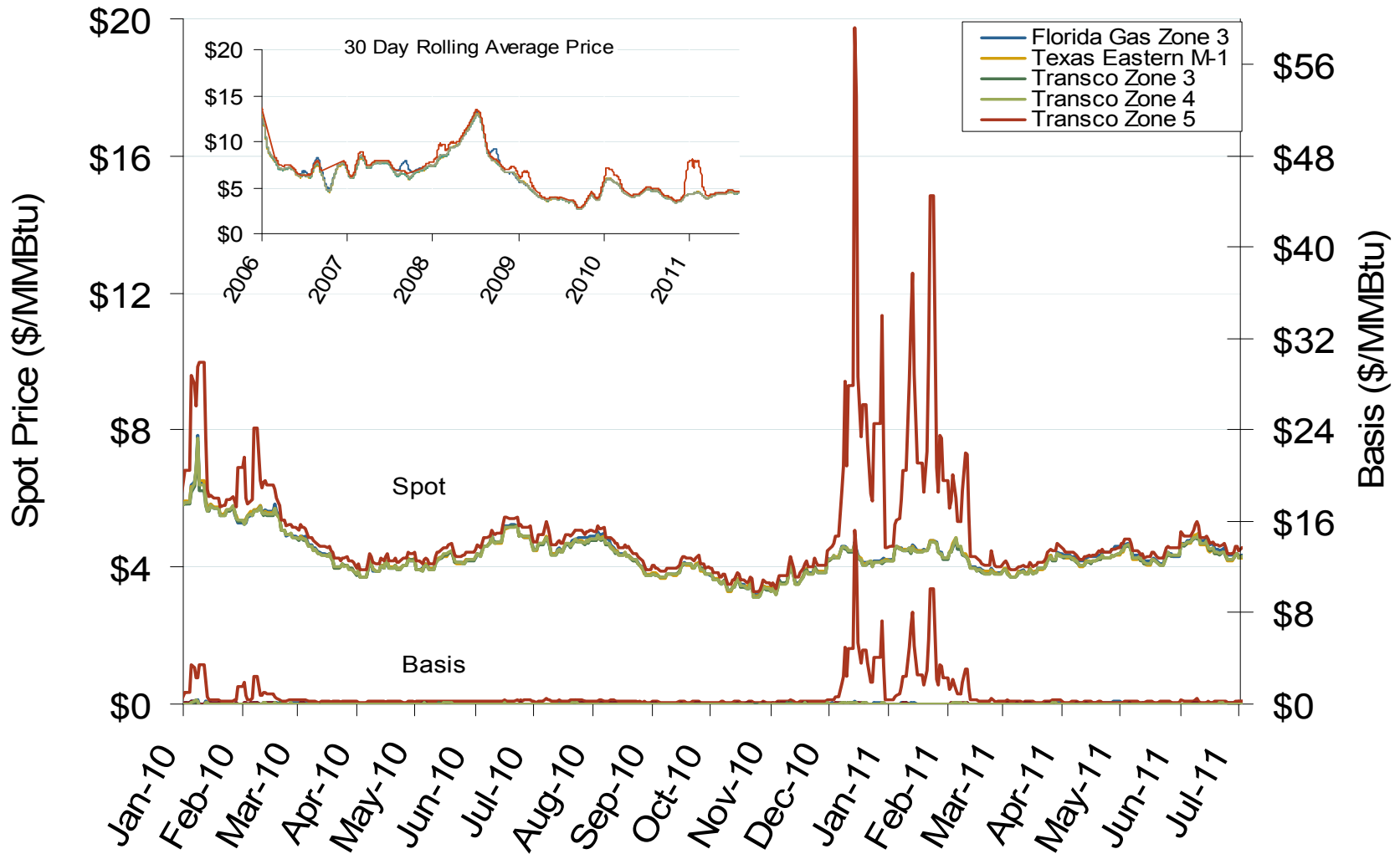
Southeast Natural Gas Region



Annual Average Spot Hub Prices

Annual Average Day Ahead Prices (\$/MMBtu)						
	2006	2007	2008	2009	2010	5-Year Avg
Henry Hub	\$6.74	\$6.94	\$8.85	\$3.92	\$4.37	\$6.16
Florida Gas Zone 3	\$7.01	\$7.32	\$9.13	\$3.98	\$4.42	\$6.38
Transco Station 65	\$6.84	\$7.05	\$8.92	\$3.96	\$4.38	\$6.23
Transco Zone 4	\$6.93	\$7.17	\$8.98	\$3.98	\$4.39	\$6.29
Transco Zone 5	\$7.13	\$7.41	\$9.46	\$4.33	\$5.04	\$6.67
Tetco M1	\$6.79	\$7.07	\$8.98	\$3.98	\$4.40	\$6.25

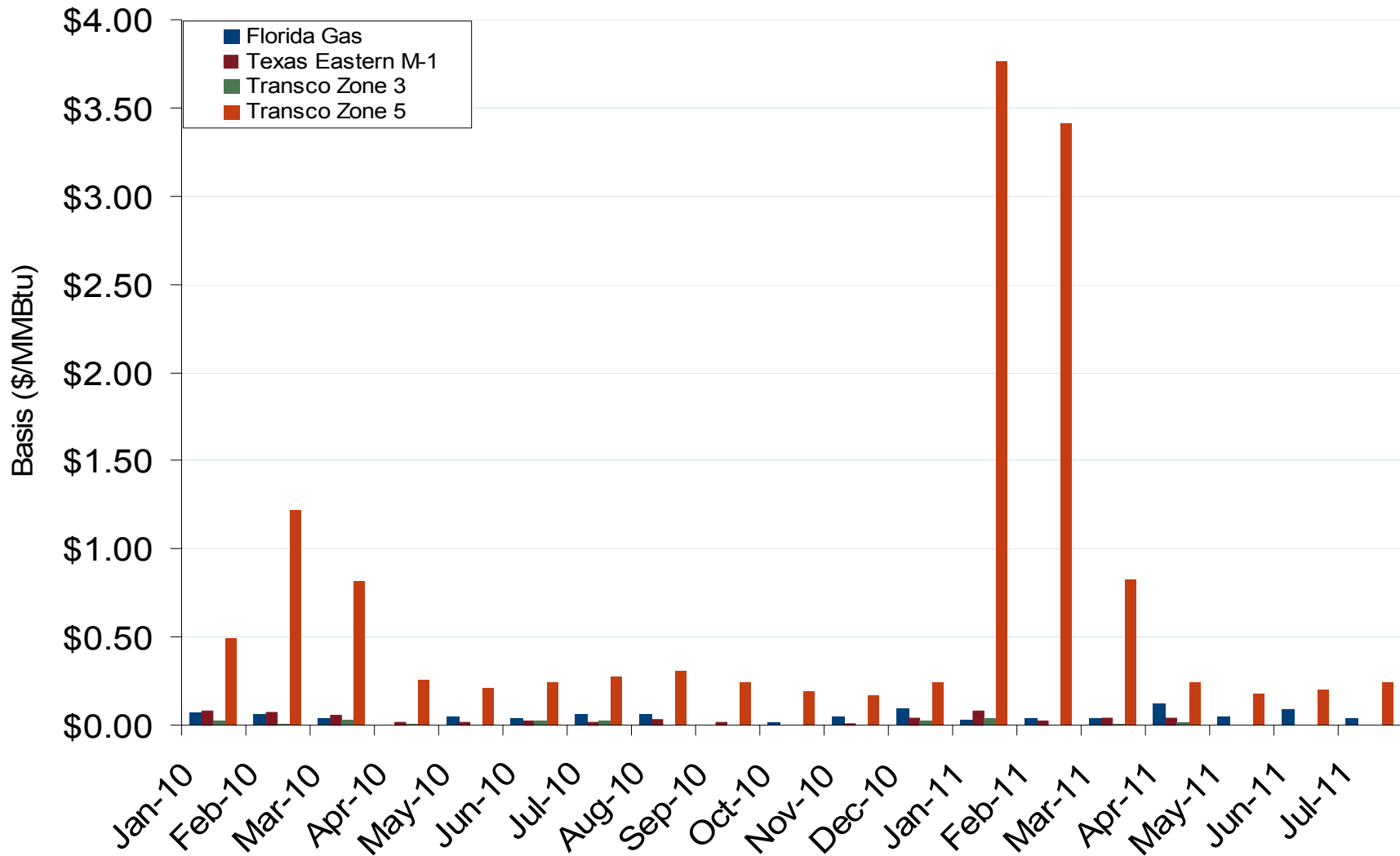
Southeastern Day-Ahead Hub Spot Prices and Basis



Southeast Natural Gas Market: Average Basis to Henry Hub

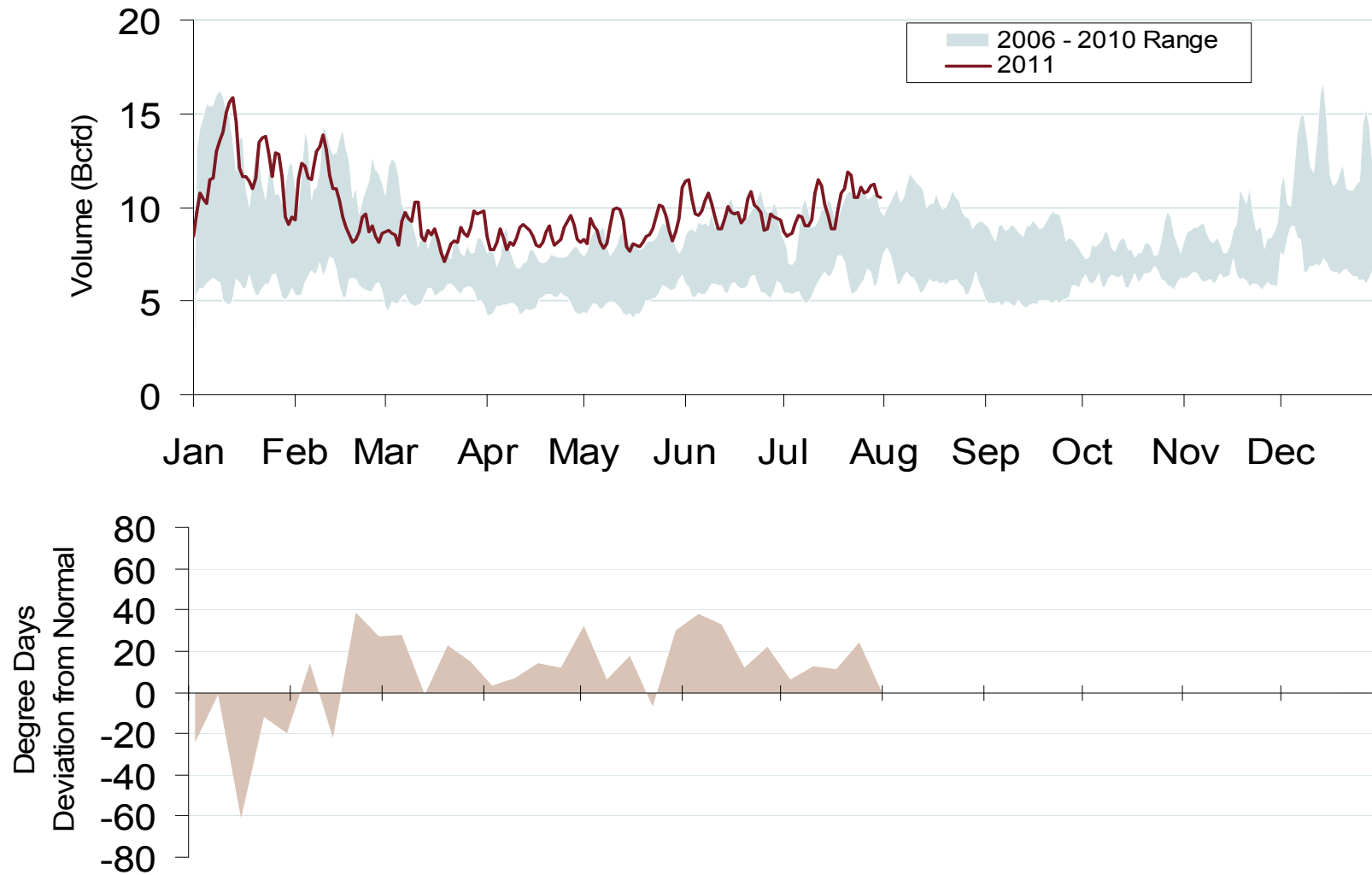
Federal Energy Regulatory Commission • Market Oversight • www.ferc.gov/oversight

Southeastern Monthly Average Basis Value to Henry Hub

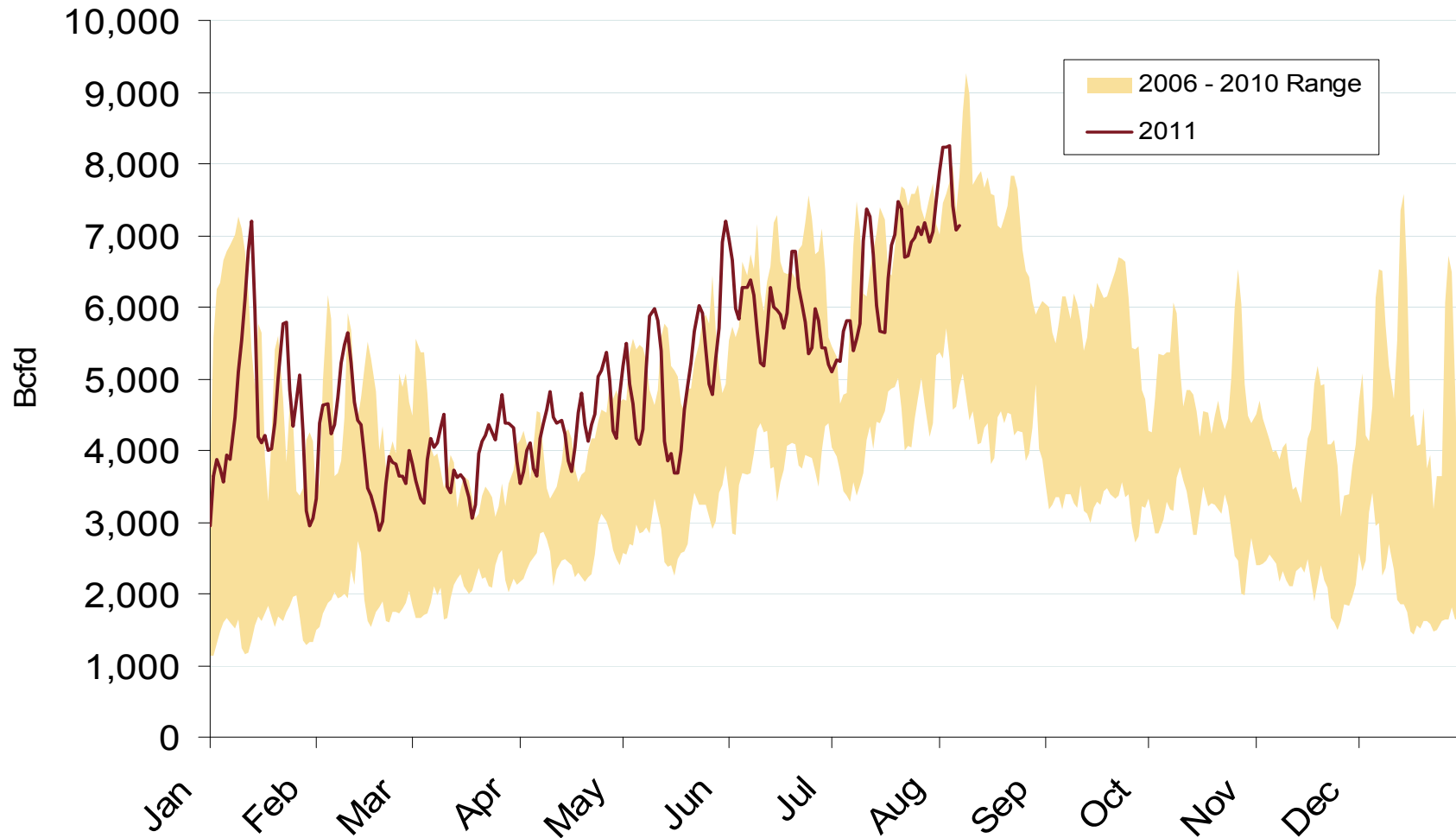


Source: Derived from Platts data
August 2011

Daily Southeast Natural Gas Demand - All Sectors



Southeast Natural Gas Consumption for Power Generation



Southeast Infrastructure Additions

- **ETP's Tiger Pipeline** – Will add 2.6 Bcfd of takeaway capacity from the Haynesville, Bossier Sands, and Fort Worth supply basins into the Perryville Hub in northern LA. Will interconnect with Texas Gas, Tennessee, TETCO, Trunkline, ANR and SESH.
- **Texas Gas Greenville Lateral Stage 2 Expansion** - adds 250 MMcfd of capacity in Mississippi through additional compression, giving Fayetteville shale producers increased access to markets served by ANR, Trunkline, Sonat and TETCO.
- **CenterPoint CP Line Phase IV** - Stage 4 compression expansion adds 340 MMcfd of capacity to the CP Line.
- **Regency Energy Partners Haynesville Expansion and Red River Lateral** - This 1.2 Bcfd intrastate line is designed to move Haynesville shale gas to interconnects with Texas Gas, Tennessee, Trunkline, Sonat, Columbia Gulf and ANR at the Perryville Hub.

