

Texas (ERCOT) Electric Market Zones



Federal Energy Regulatory Commission • Market Oversight @ FERC.gov**Overview****Geography**

States covered: Most of Texas

Reliability regions: Electric Reliability Council of Texas (ERCOT)

Balancing authority: Electric Reliability Council of Texas (ERCOT)

Zones: Houston, North, South, West.

RTO/ISO

ERCOT schedules and centrally dispatches the grid within a single control area, ensures transmission reliability and wholesale open access, and manages financial settlement in the wholesale power market. It also administers the Texas competitive retail market, including customer switching. ERCOT operates wholesale markets for:

- Balancing energy
- Ancillary service markets with zonal congestion management.

Market participants trade electricity bilaterally directly, through brokers and through the IntercontinentalExchange (ICE). Physical products predominantly use the ERCOT hub pricing point, but physical and financial products priced at the four ERCOT zones are also traded.

[ERCOT 2006 State of the Markets Report](#)

Market Monitors:

Dan Jones of Potomac Economics – Independent Market Monitor, ERCOT

Jess Totten, Design Oversight and Pam Whittington Enforcement Oversight, PUC of Texas

Federal Energy Regulatory Commission • Market Oversight @ FERC.gov

Generation/Supply

Marginal fuel type: Coal and natural gas

Generating capacity (summer 2007): 71,244 MW

Capacity reserve (summer 2007): 8,744 MW

Reserve margin (summer 2007): 14%

The region currently has excess capacity, and some generation has been mothballed or decommissioned. Reserve margins are nevertheless expected to decline to ERCOT's 12.5% target in the next two years.

Demand

All time peak demand: 62.5 GW (set August 13, 2007)

Peak demand growth: 0.0% (2006–2007)

Summer Peak Demand (GW): 60.2 (2005) 62.3 (2006) 62.5 (2007)

Source: *PUC of Texas*

Federal Energy Regulatory Commission • Market Oversight @ FERC.gov

Prices

Annual Average Real-Time Price at ERCOT North Hub

2004 \$42.63/MWh

2005 \$66.81/MWh

2006 \$51.98/MWh

Prices increased in 2005 as a result of disturbances to the natural gas market. Prices declined in 2006 as natural gas storage levels remained above historical ranges throughout the injection season (April through October).

Interconnections/Seams

The ERCOT control area is not synchronously connected to the Eastern or Western Interconnection (it is a separate interconnection) but it can exchange about 1,100 MW with SPP and Mexico through DC links. An additional 250 MW of exchange capacity with Mexico came online in 2007.

Focal Points

New Market Design: In 2006, the Energy Reliability Council of Texas (ERCOT) moved forward with a design for a nodal, two-settlement market to begin in early 2009. ERCOT will not have a capacity market but starting in March 2007, ERCOT will increase its \$1,000/MWh offer cap in steps, ending at \$3,000/MWh shortly after the new market design is implemented.

Rolling Blackout: In April 2006 an unusual heat wave led to weather and load forecast errors that combined with seasonal maintenance outages and the sudden loss of several generators to force a rolling blackout of 1,000 MW of load lasting about two hours.

Supply and Demand Statistics for Texas

Supply Demand Statistics				
	2004	2005	2006	2007
Summer Generating Capacity MW	75,056	69,380	70,756	71,244
Summer Peak Demand MW	58,506	60,214	62,339	62,500
Summer Reserves MW	15,324	9,166	8,417	8,744
Summer Reserve Margin:	26%	15%	14%	14%
Annual Load (GWh):	289,113	299,227	NA	NA
Annual Net Generation GWh	NA	NA	NA	NA

Source: Derived from FERC staff discussion with Texas Public Utility Commission

Updated October 22, 2007

1076

Yearly Average of RTO Real-Time Prices – All Hours

Annual Average Real-Time Ahead Prices (\$/MWh)

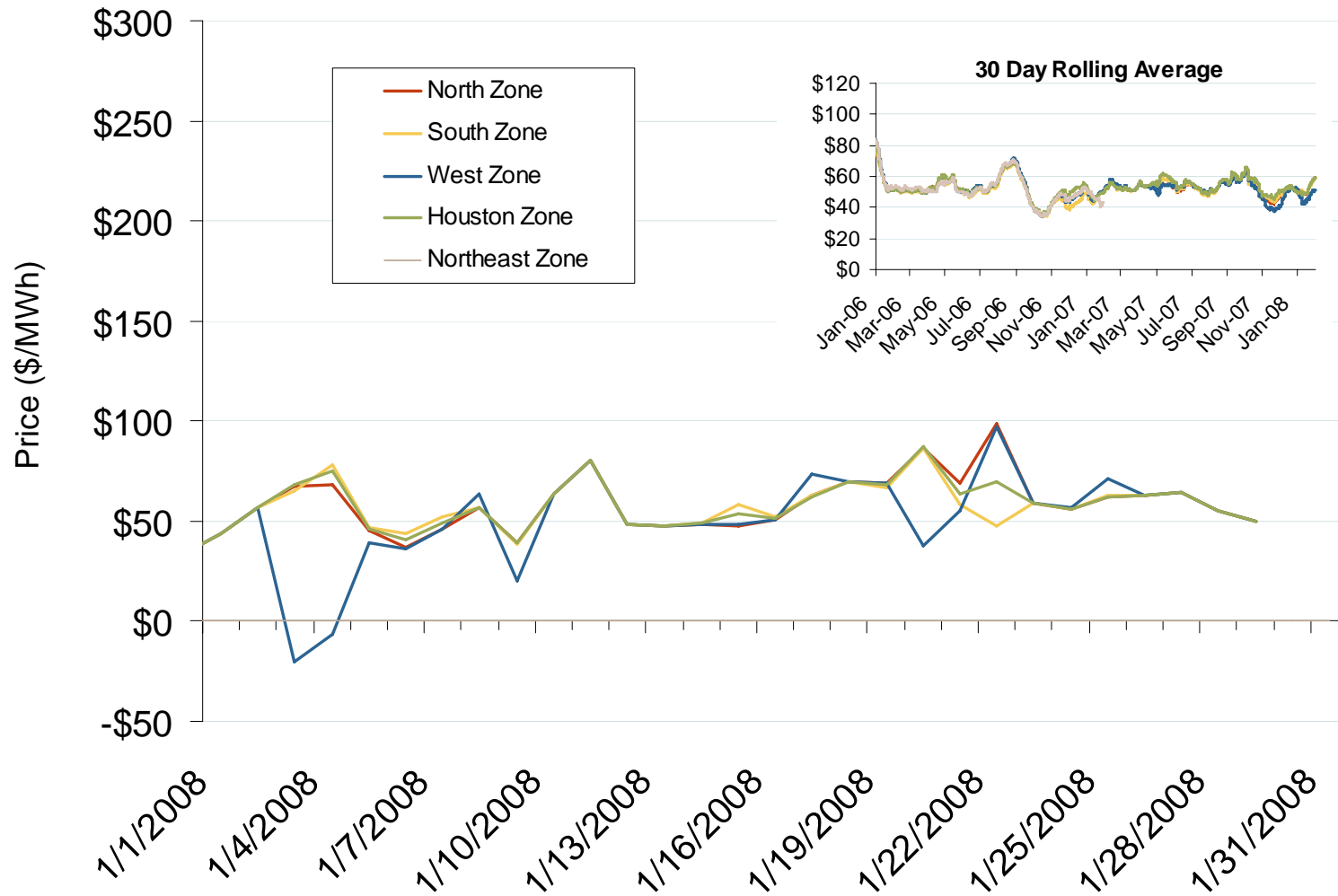
	2005	2006	5 Years
North Zone	\$66.81	\$51.98	\$45.67
South Zone	\$63.91	\$50.66	\$43.65
West Zone	\$66.83	\$51.91	\$45.23
Houston Zone	\$67.77	\$52.59	\$45.76
Northeast Zone	\$66.18	\$51.34	NA

Source: Derived from ERCOT data.

Updated February 2, 2007

1077

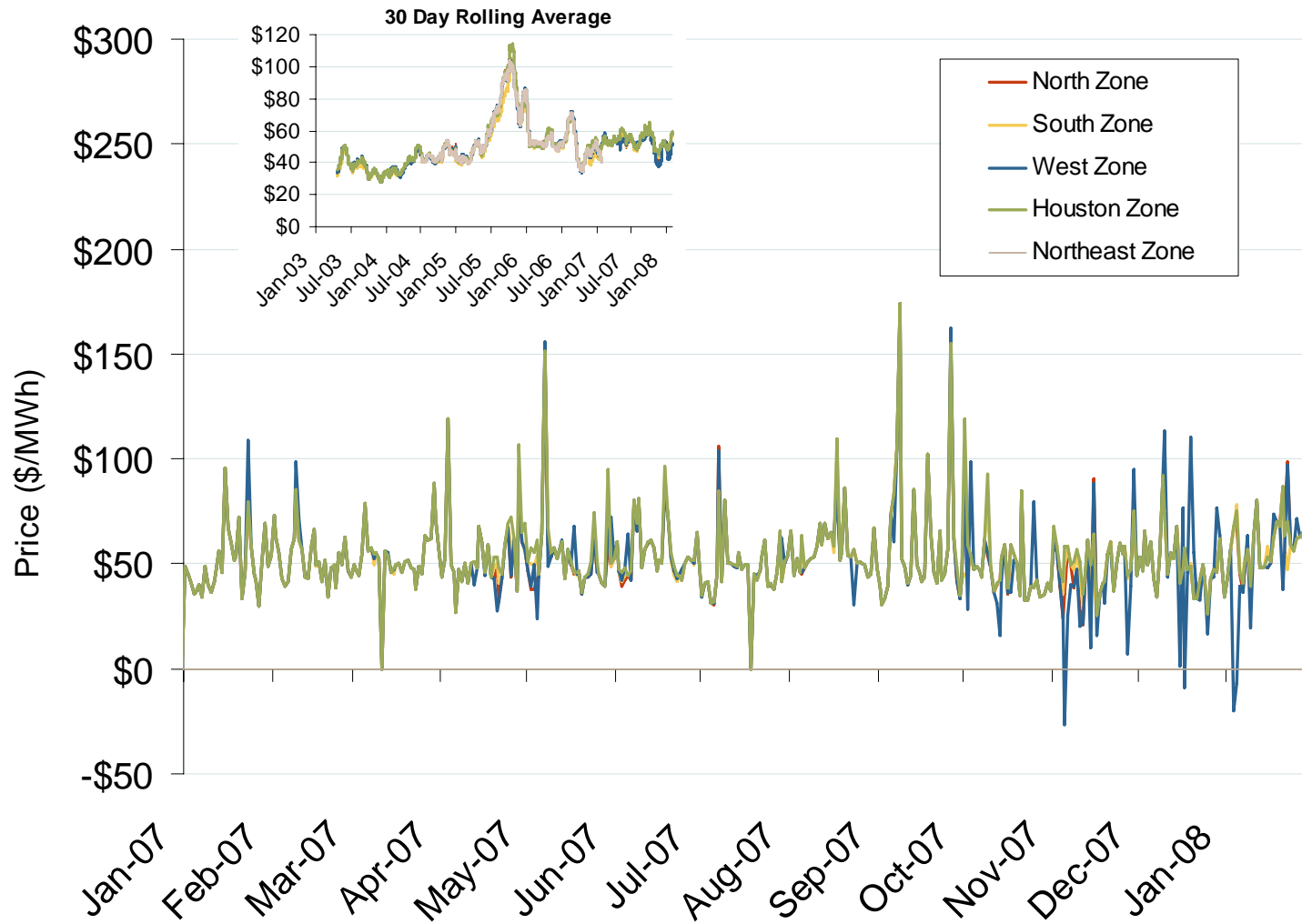
Daily Average of ERCOT Real Time Prices - All Hours



Source: Derived from ERCOT data.

Updated February 8, 2008 1132

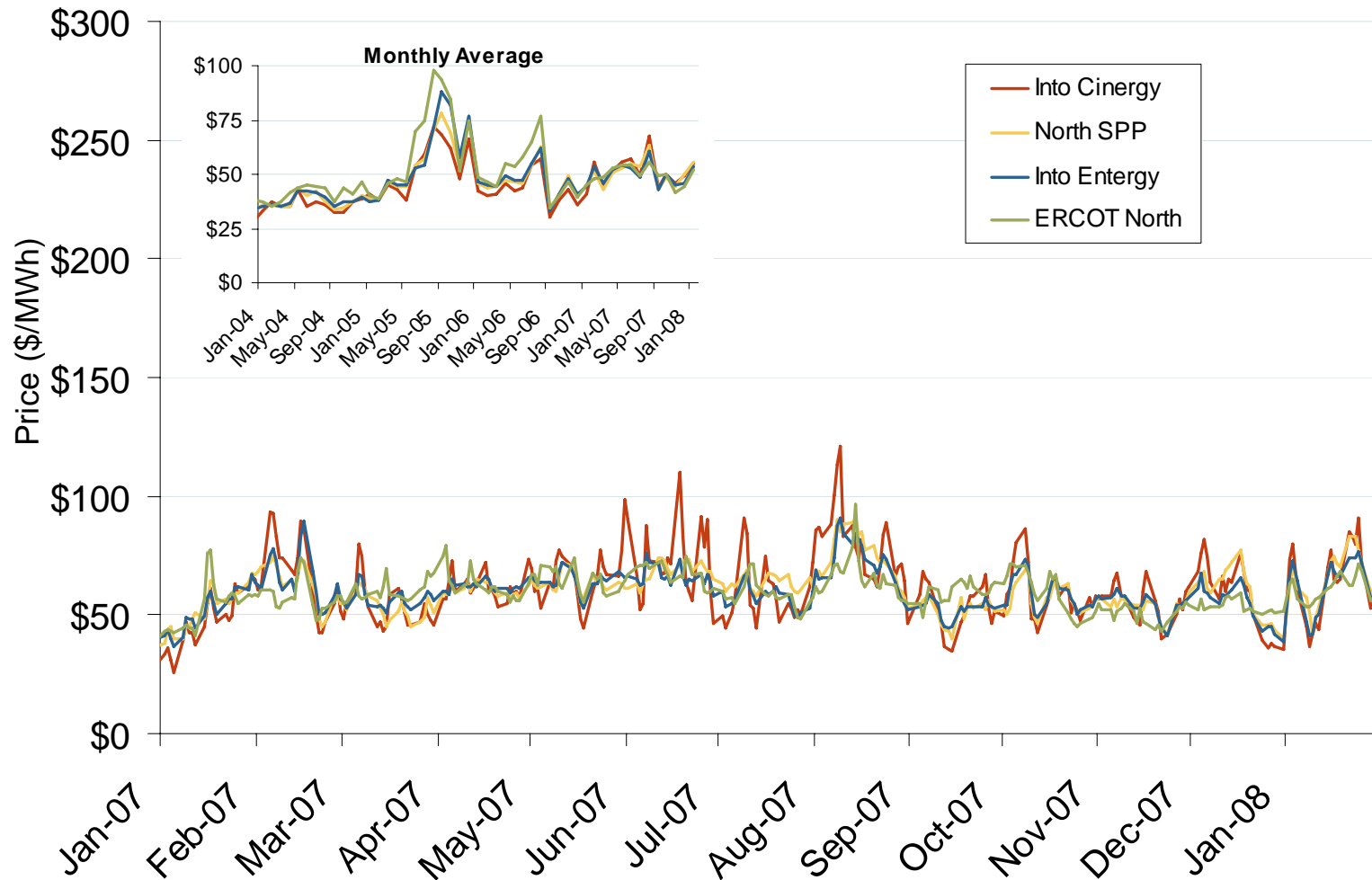
Daily Average of ERCOT Real Time Prices - All Hours



Source: Derived from ERCOT data.

Updated February 8, 2008 1078

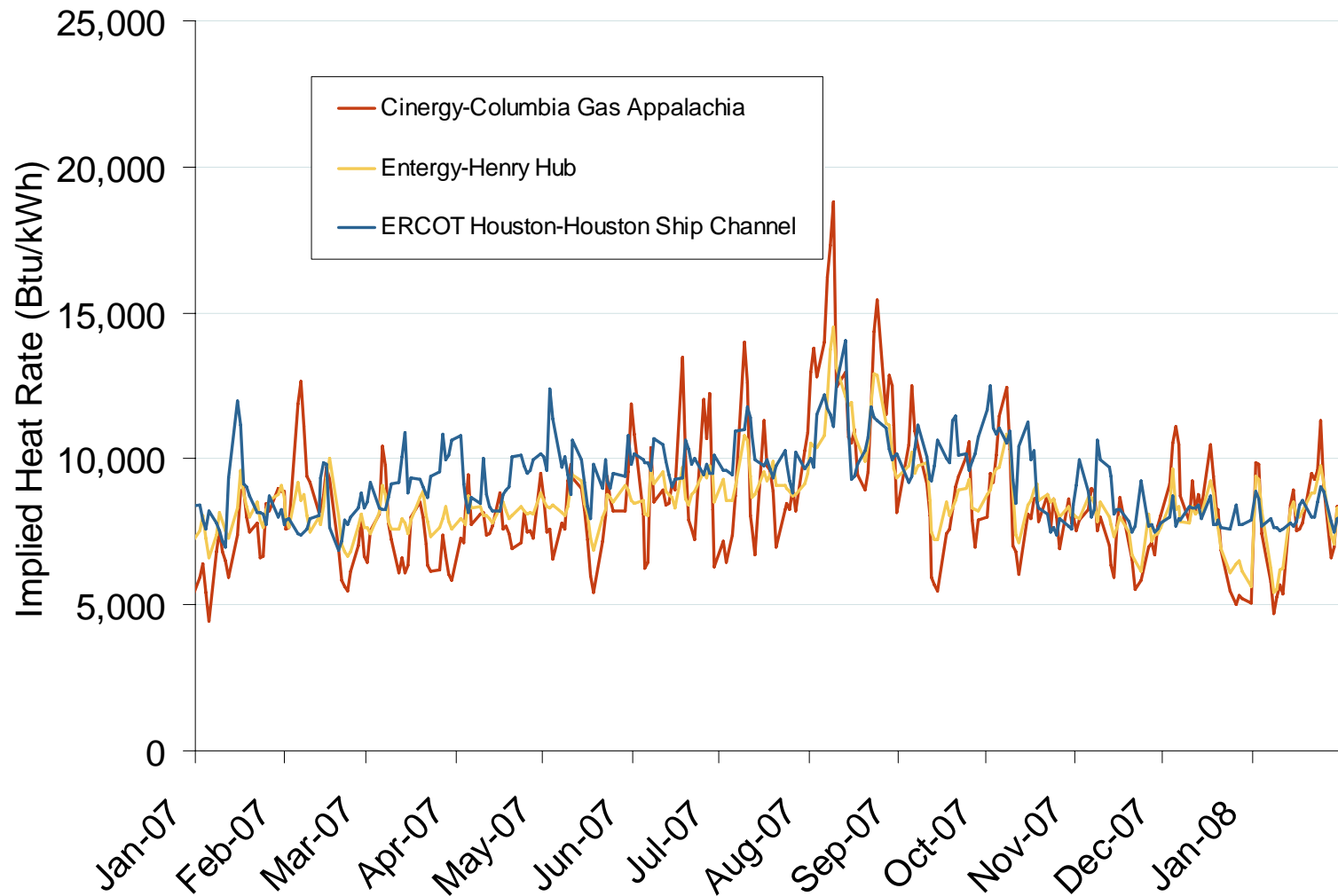
Midwestern Daily Bilateral Day-Ahead On-Peak Prices



Source: Derived from *Platts* data.

Updated February 8, 2008 1079

Implied Heat Rates at South Central Trading Points

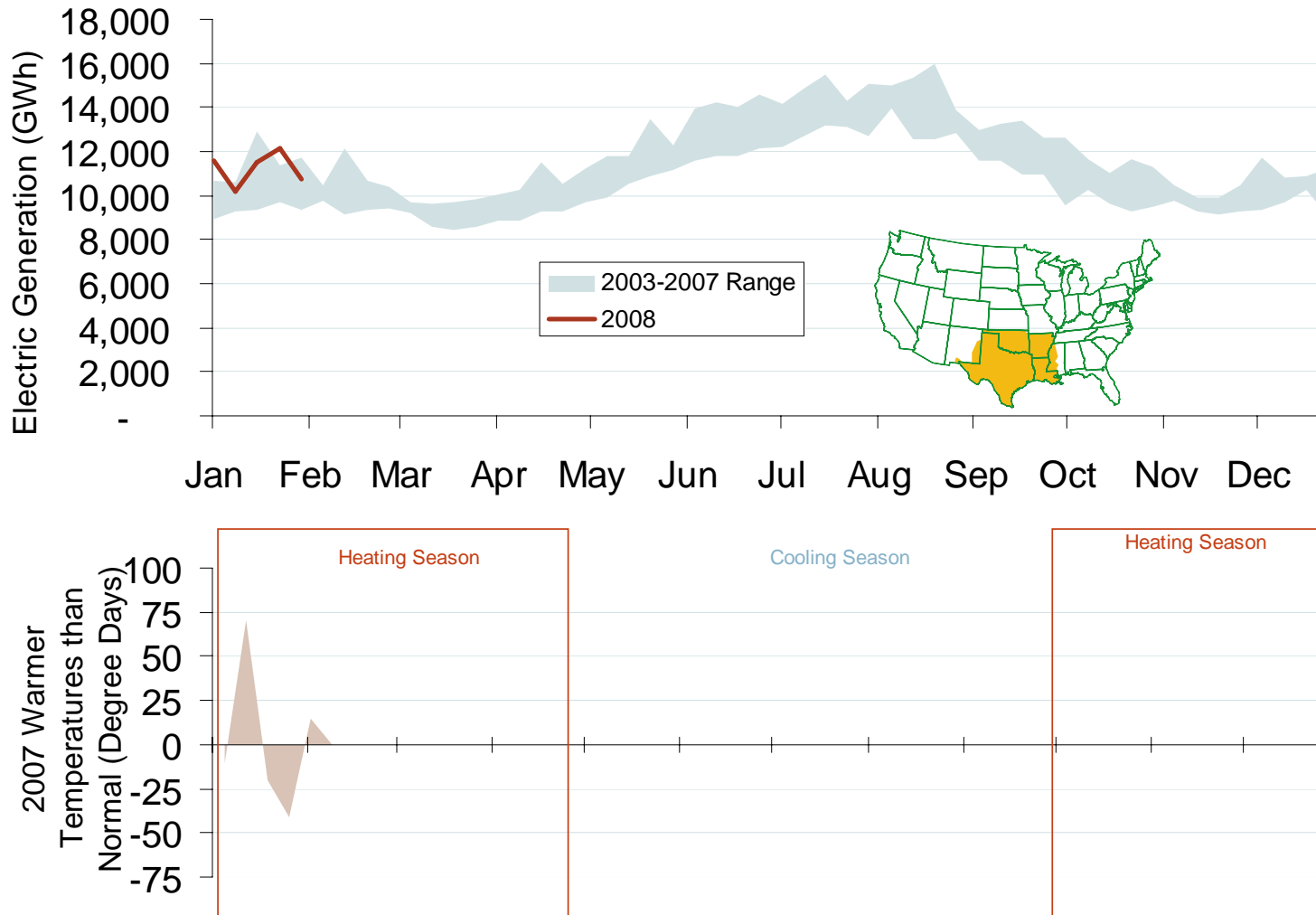


Source: Derived from *Platts* data

Updated February 8, 2008

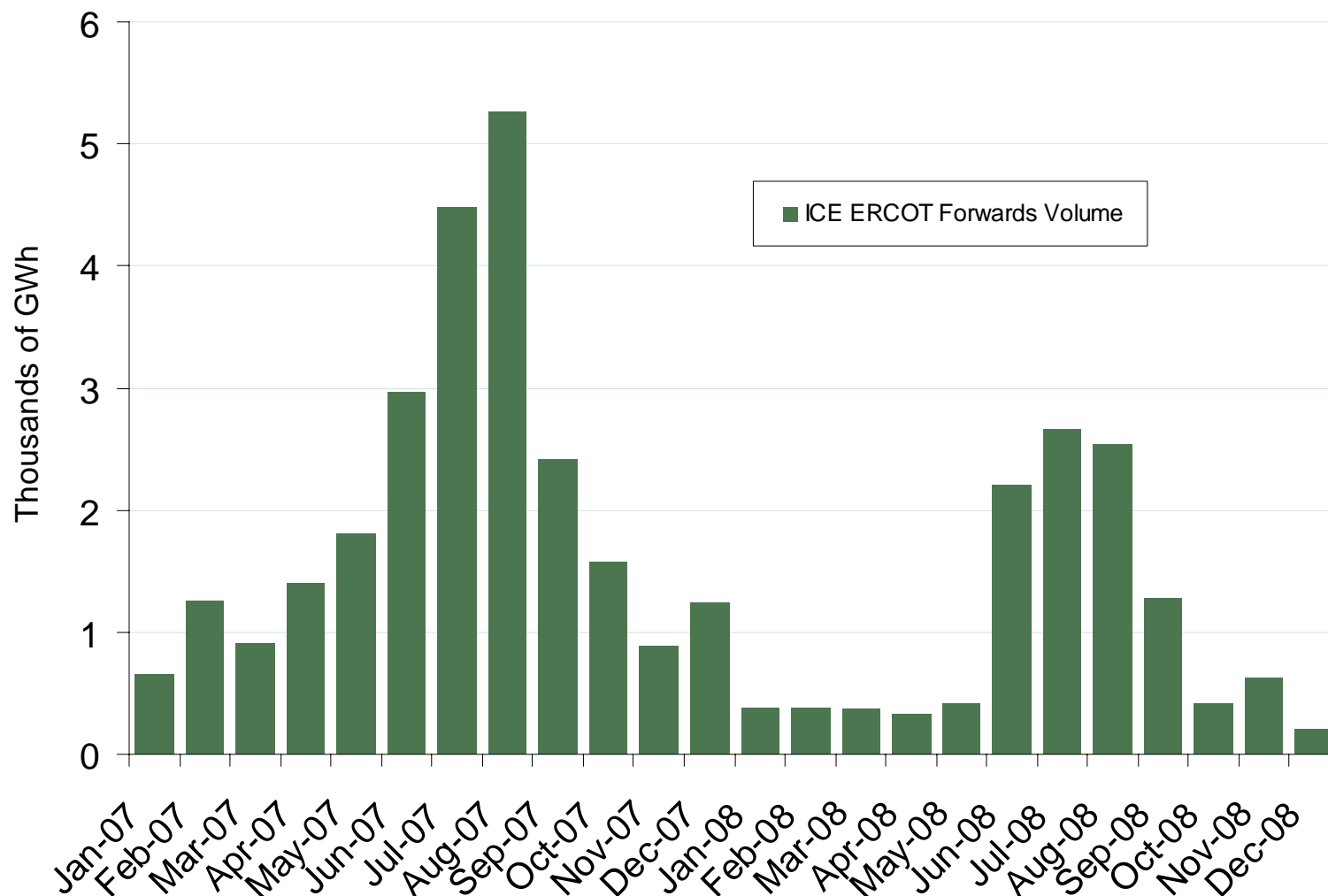
1140

Weekly Electric Generation Output and Temperatures South Central Region



Source: Derived from *EEl* and *NOAA* data.

ERCOT Forwards Volume



Source: Derived from ICE data. ICE forwards (physical) volume for ERCOT include on-peak monthly, dual month, quarterly, and calendar year contracts traded for each month.

Updated February 8, 2008