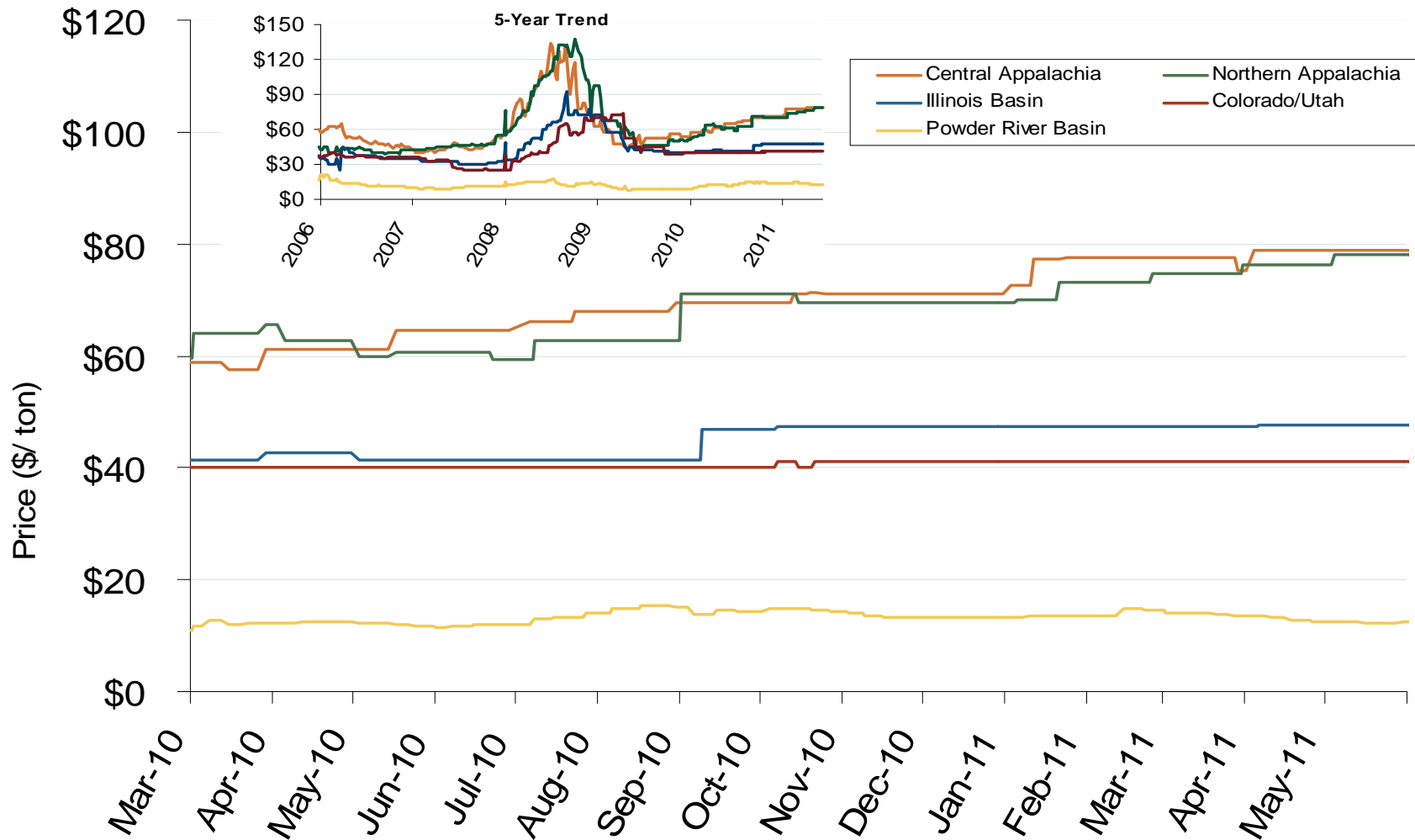
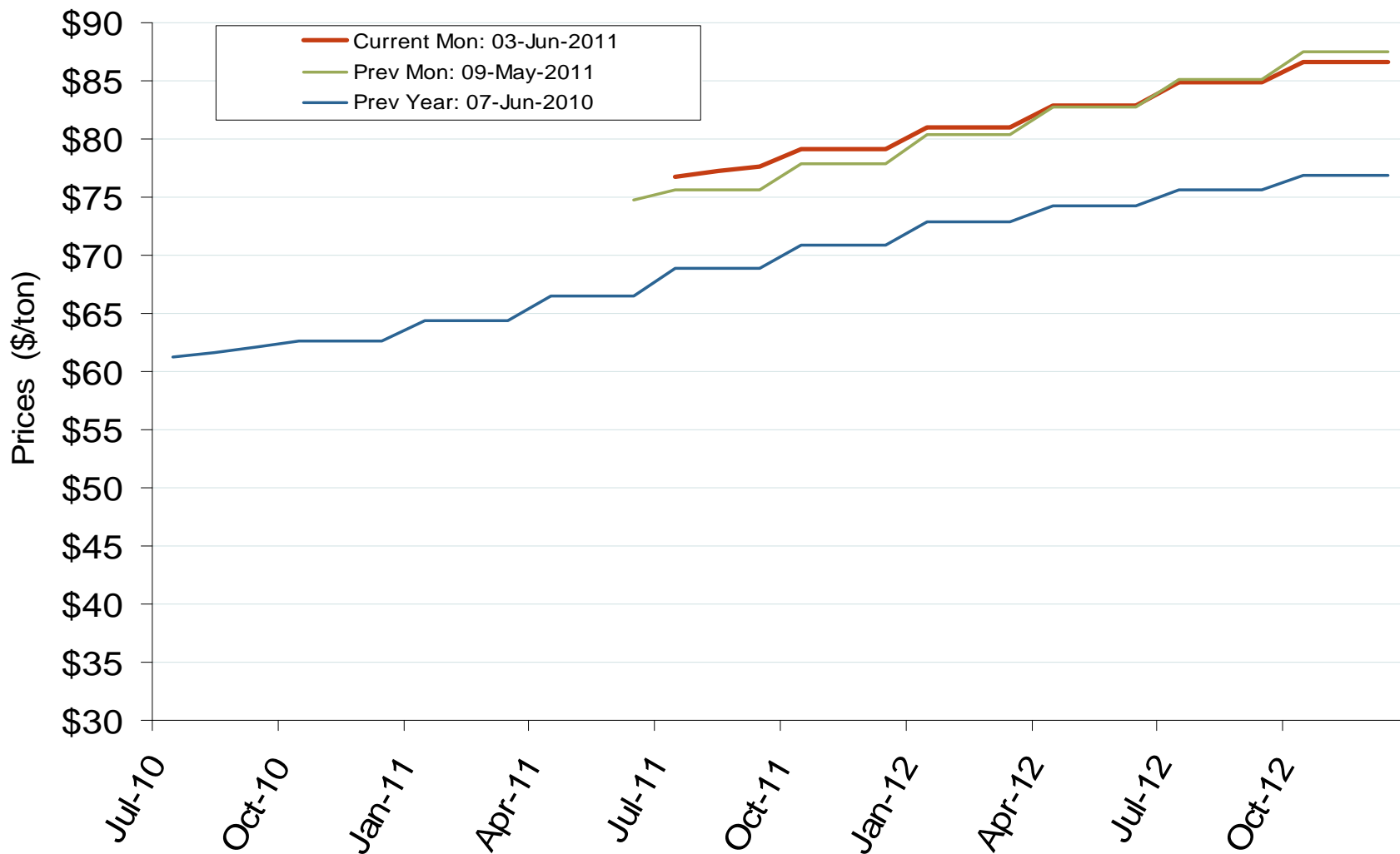


## Regional Coal Spot Prices



Note: the Central Appalachian (CAPP) coal is priced at Big Sandy. All others are mine mouth prices. Prices do not include transportation costs to a plant, as those can vary widely by contract specifications. Prices exclude incremental cost of emissions allowances.

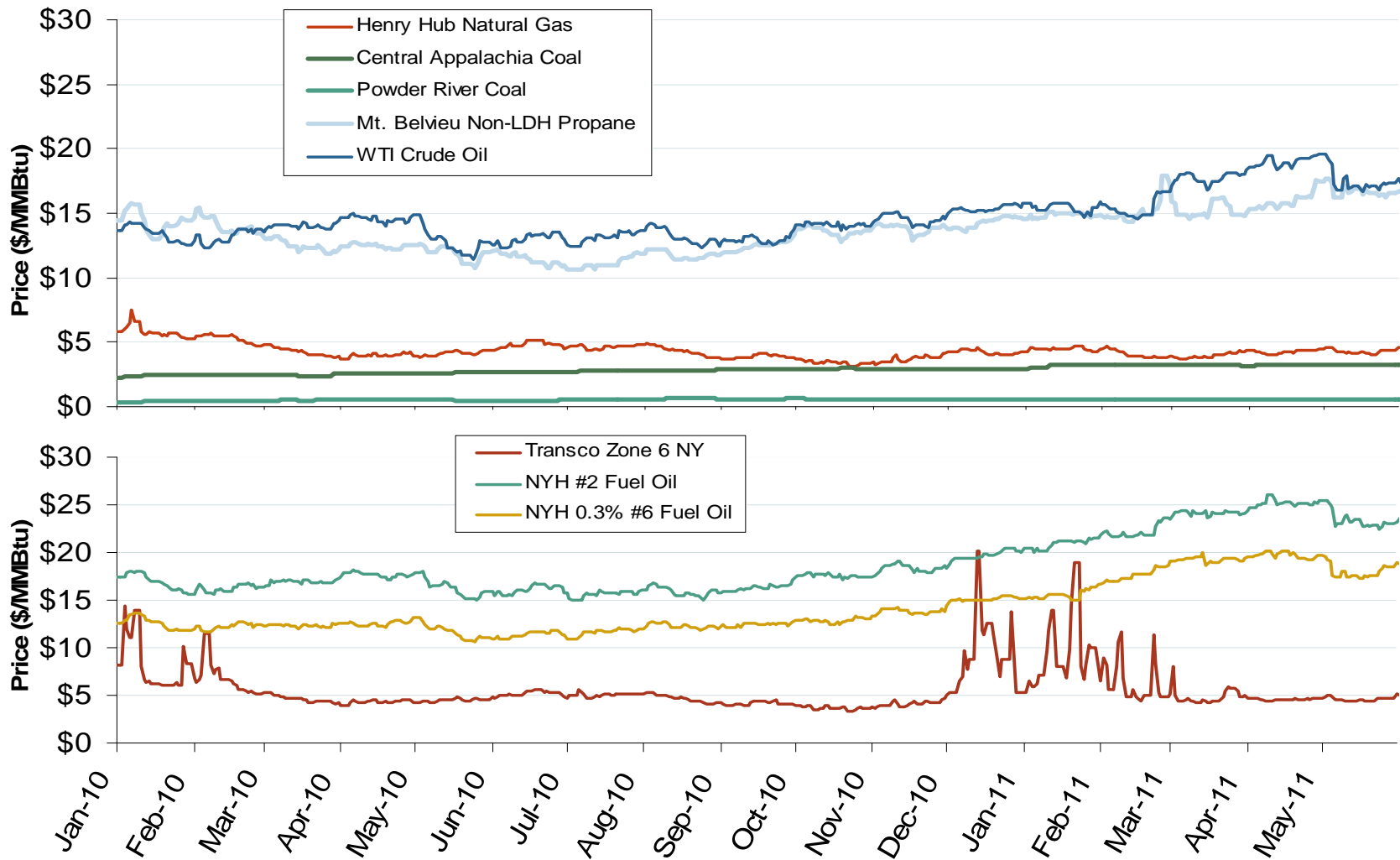
## Central Appalachian Coal Futures Prices



Source: Derived from *Nymex data*.

Updated June 3, 2011

# Oil, Coal, Natural Gas and Propane Daily Spot Prices

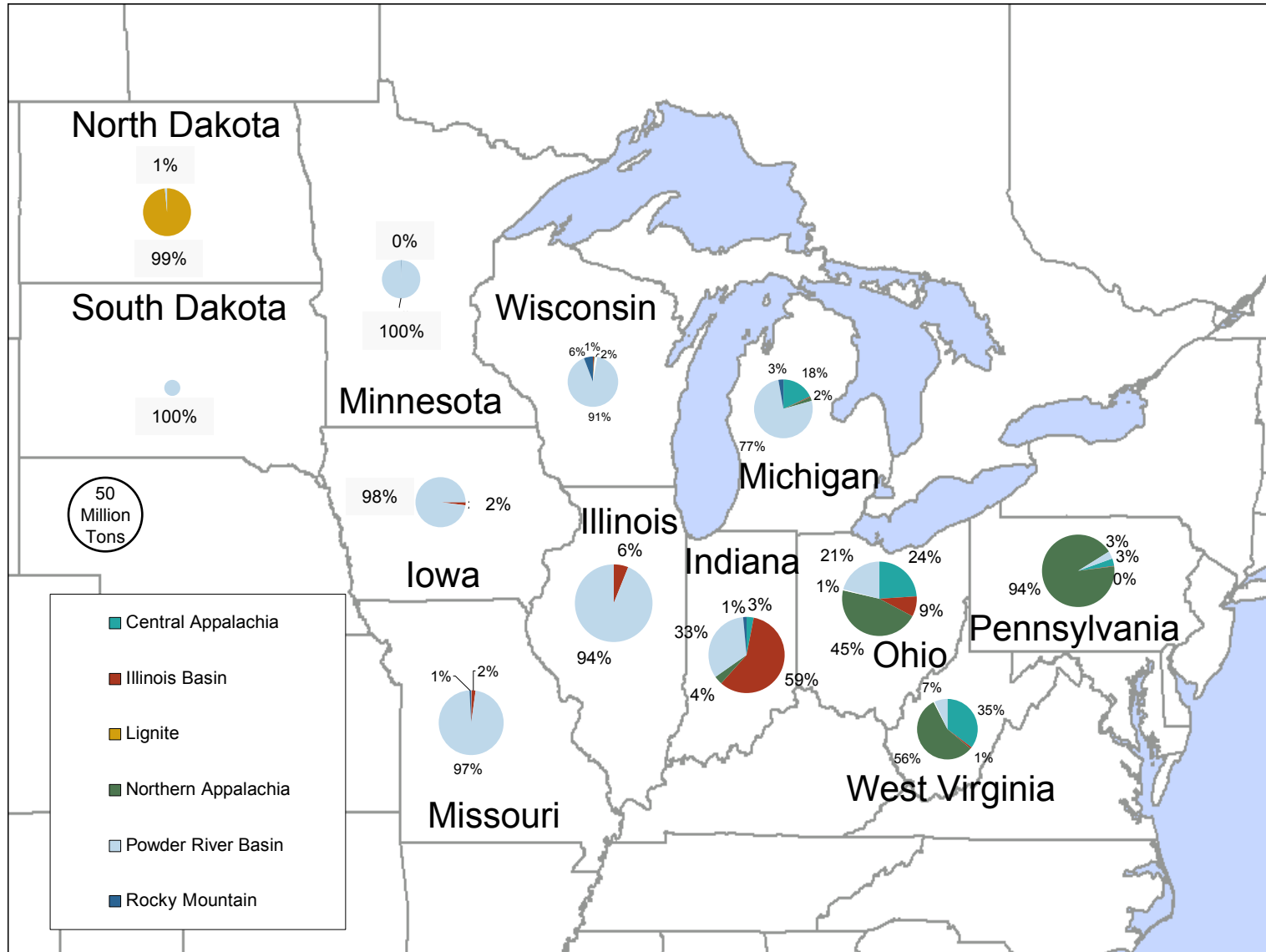


Source: Derived from ICE and Bloomberg data.

Note: Coal prices are quoted in \$/ton. Conversion factors to \$/MMBtu are based on contract specifications of 12,000 btus/pound for Central Appalachian coal and 8800 btus/pound for Powder River Basin coal.

Updated June 3, 2011

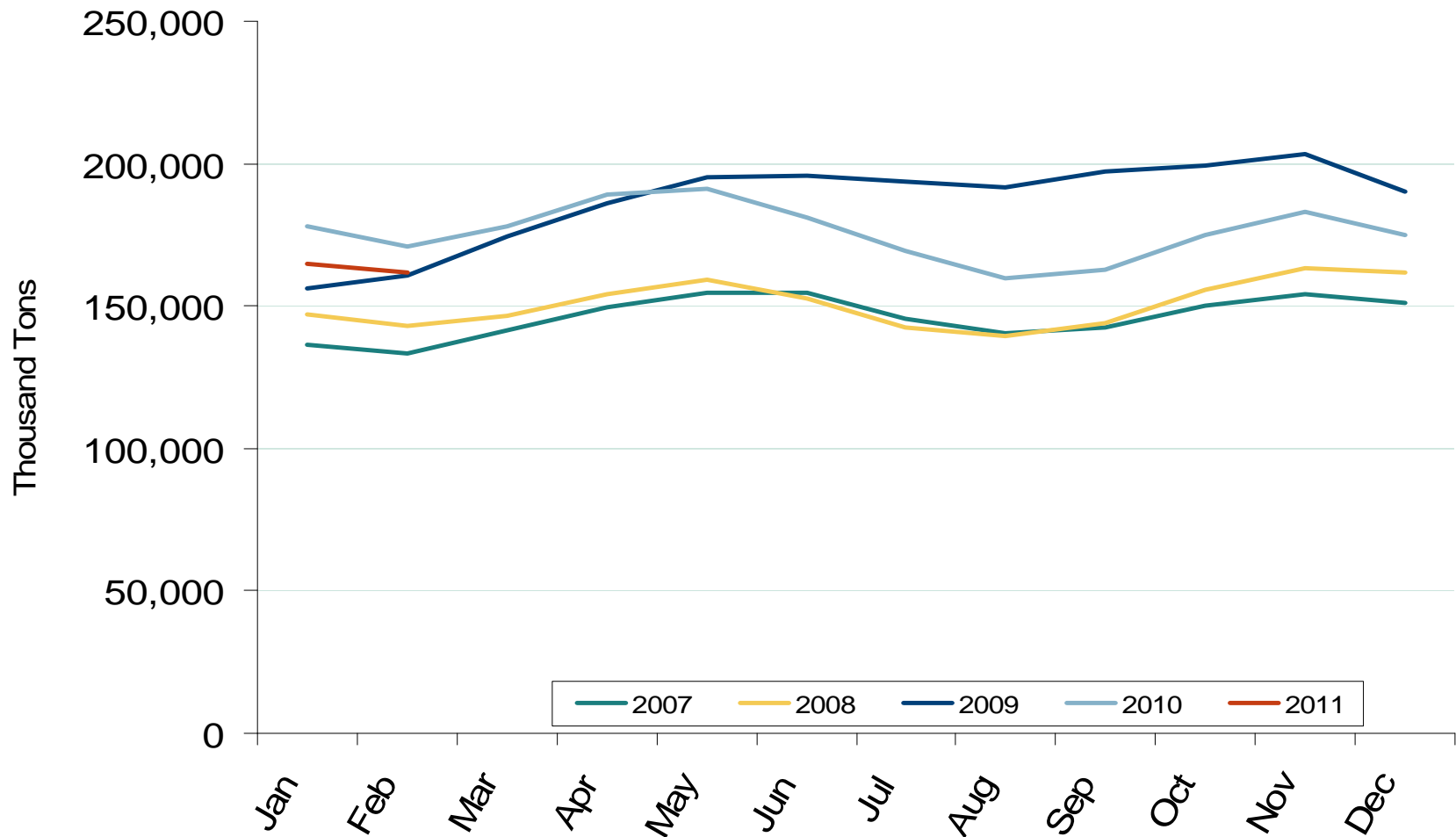
# 2008 Coal Shipment Origins by Supply Basin



Source: Derived from FERC and EIA data.

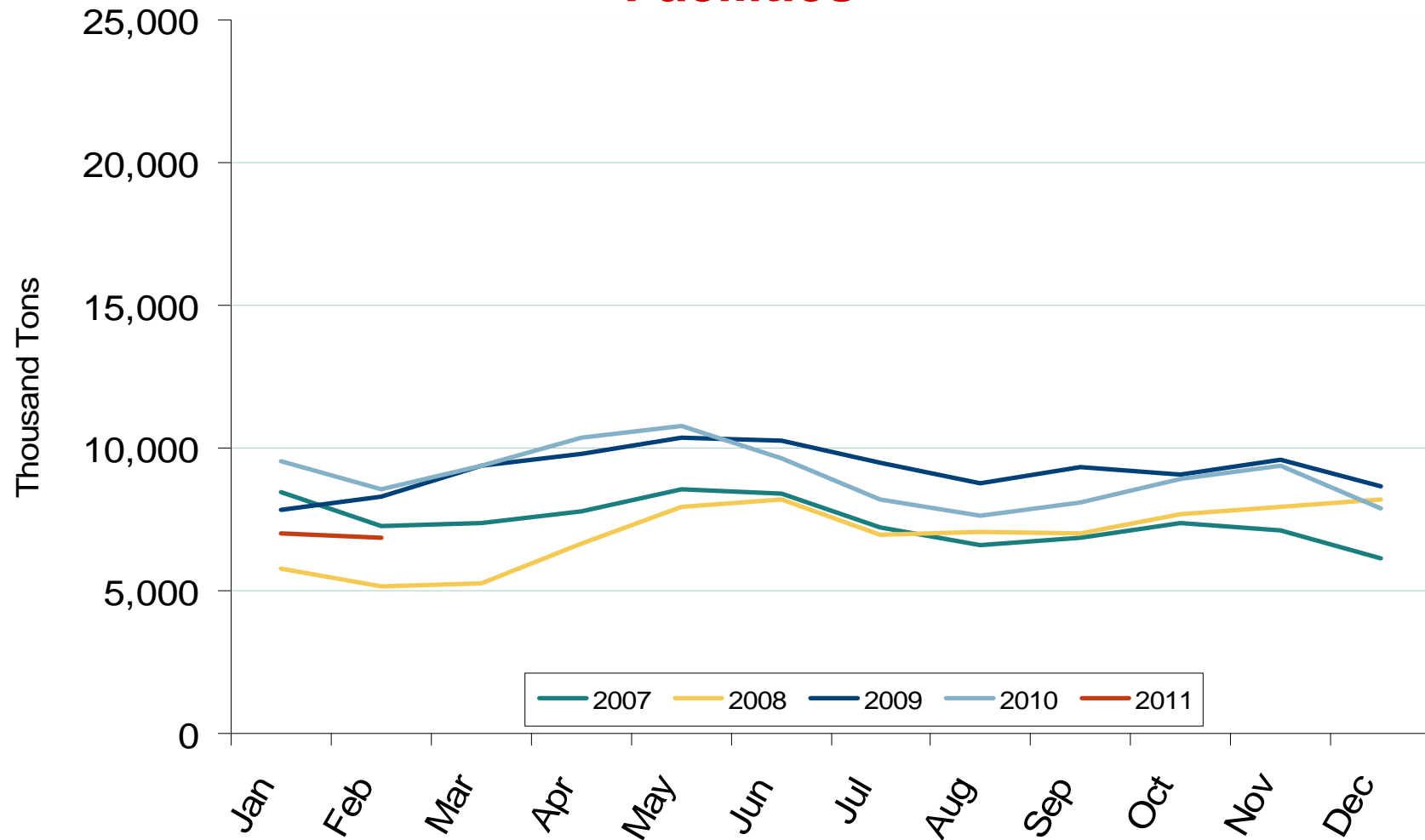
Updated March 23, 2009

## U.S. Coal Stockpiles at Electric Power Generating Facilities



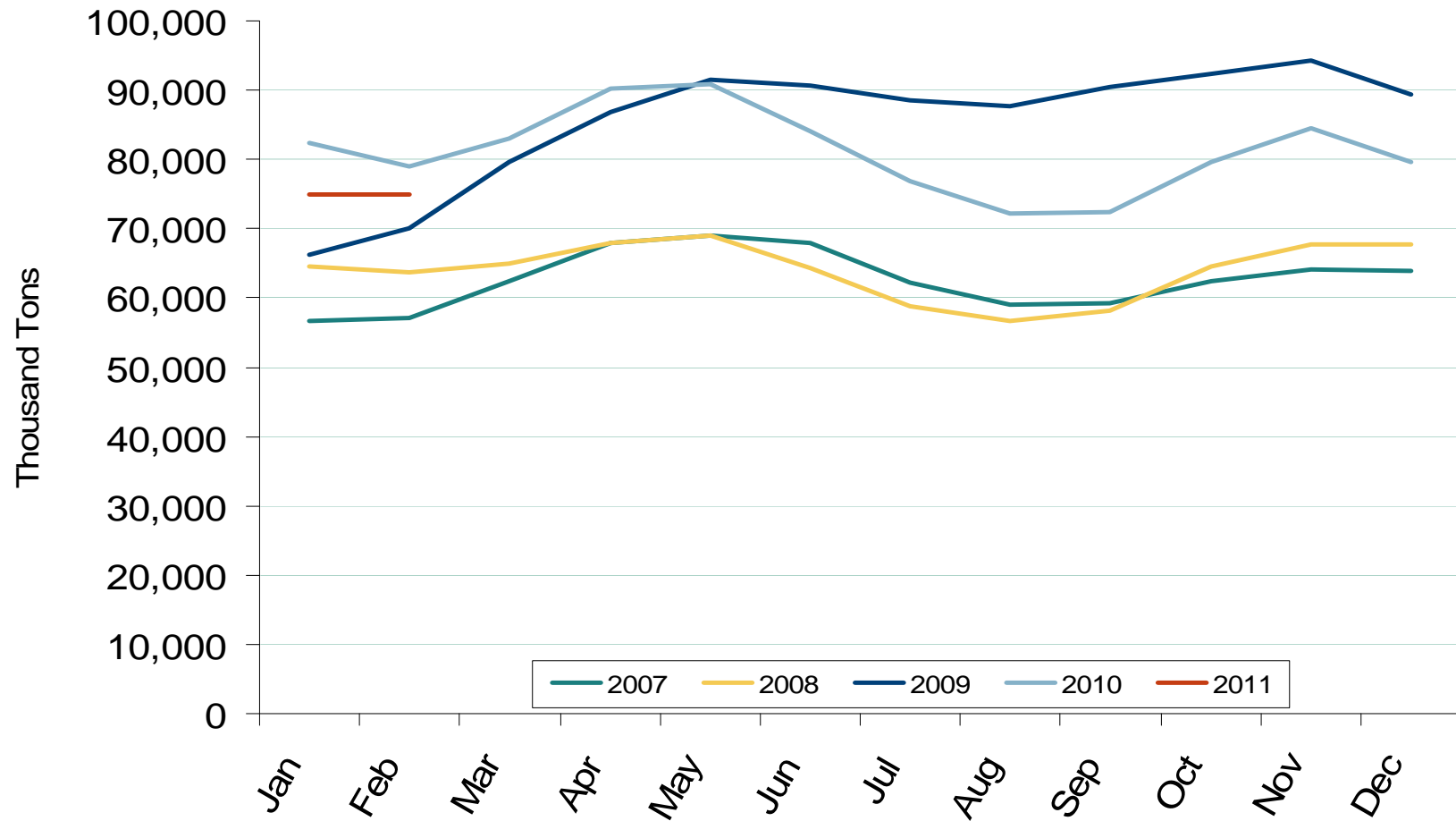
Source: Derived from *Energy Information Administration*. Excludes Industrial and Commercial Plants.

## Northeast Coal Stockpiles at Electric Power Generating Facilities



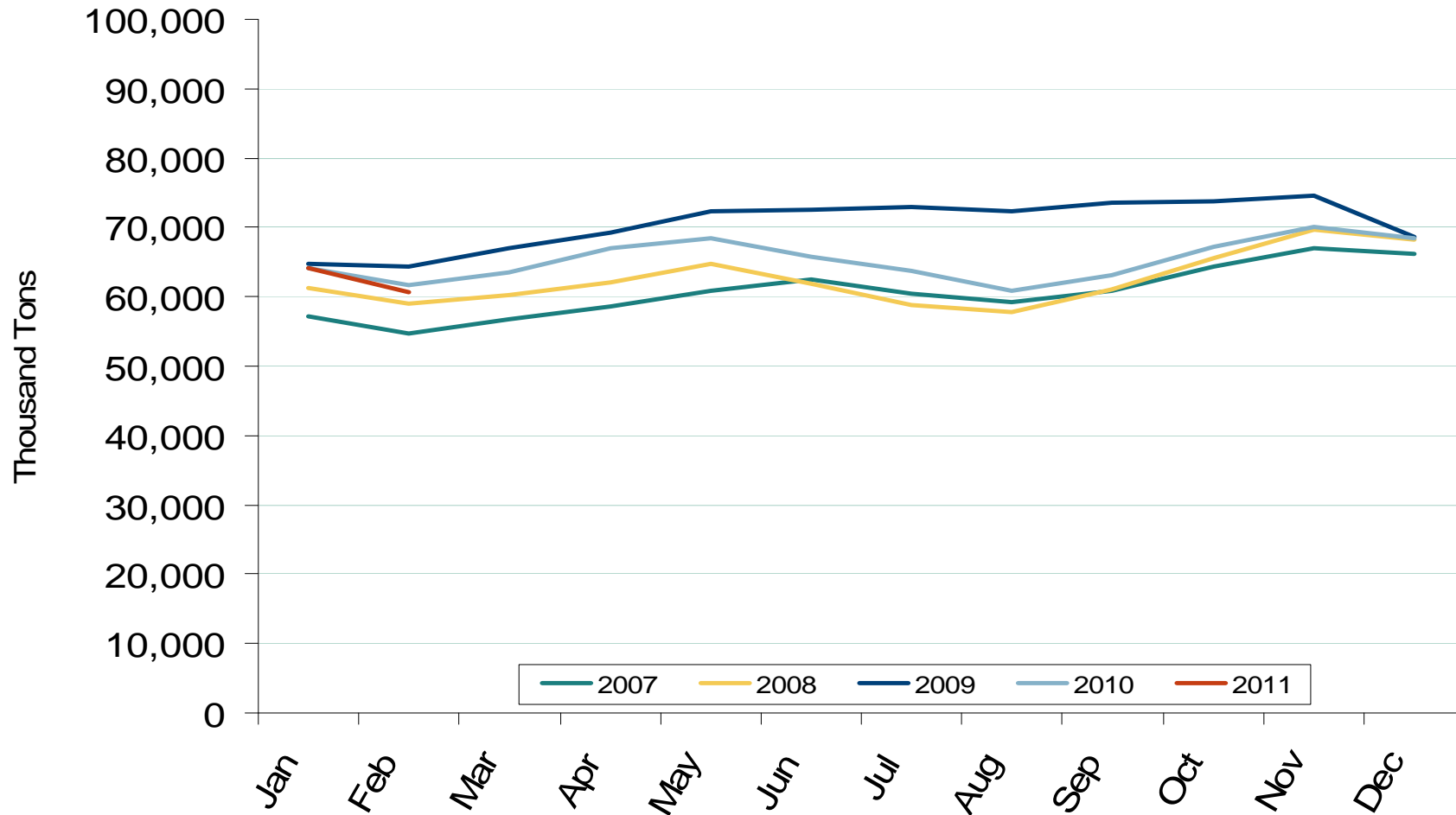
Source: Derived from *Energy Information Administration*. Excludes Industrial and Commercial Plants.

## Southeast Coal Stockpiles at Electric Power Generating Facilities



Source: Derived from *Energy Information Administration*. Excludes Industrial and Commercial Plants.

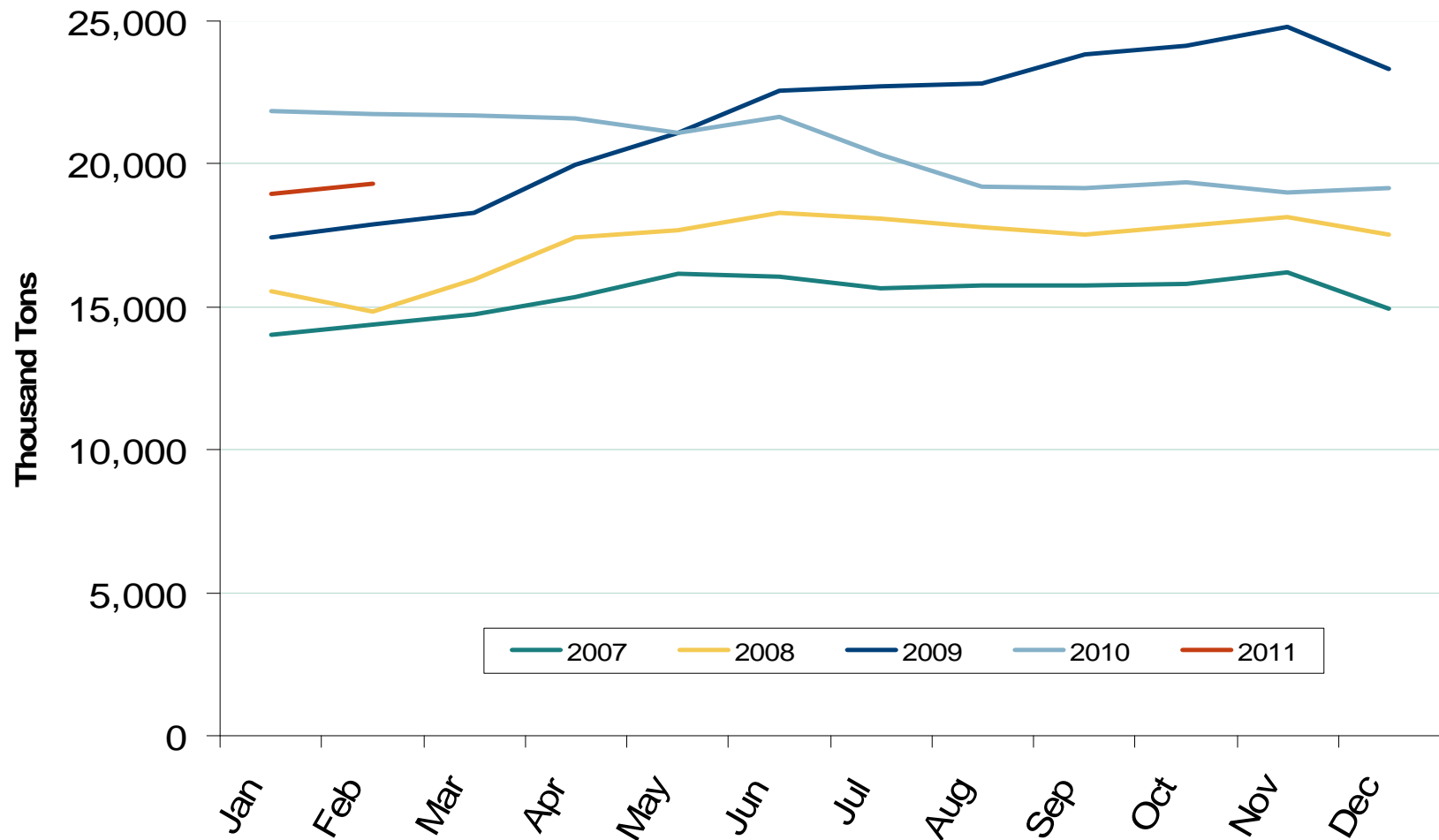
## Midwest Coal Stockpiles at Electric Power Generating Facilities



Source: Derived from *Energy Information Administration*. Excludes Industrial and Commercial Plants.



## Western Coal Stockpiles at Electric Power Generating Facilities



Source: Derived from *Energy Information Administration*. Excludes Industrial and Commercial Plants.