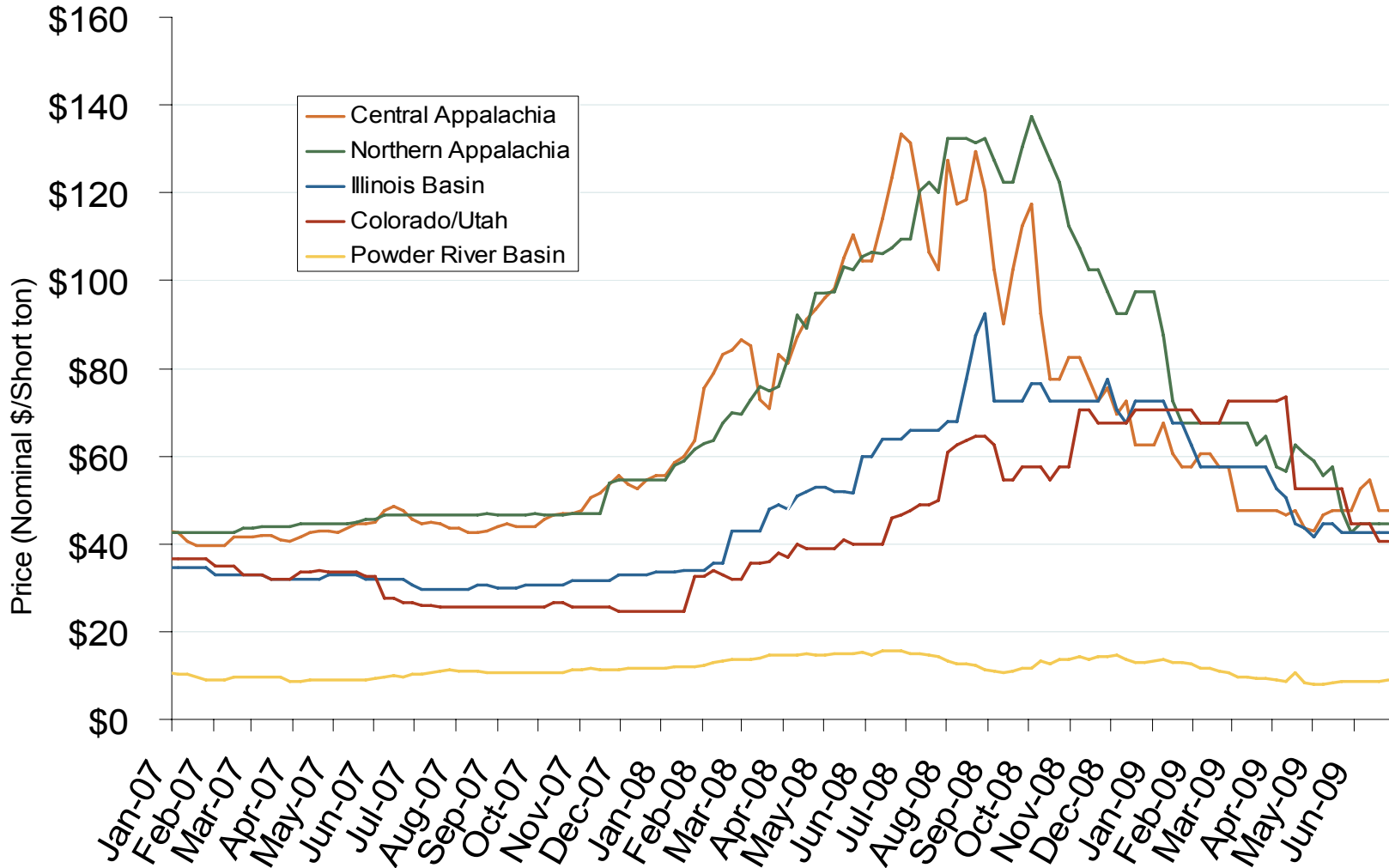


Regional Coal Spot Prices

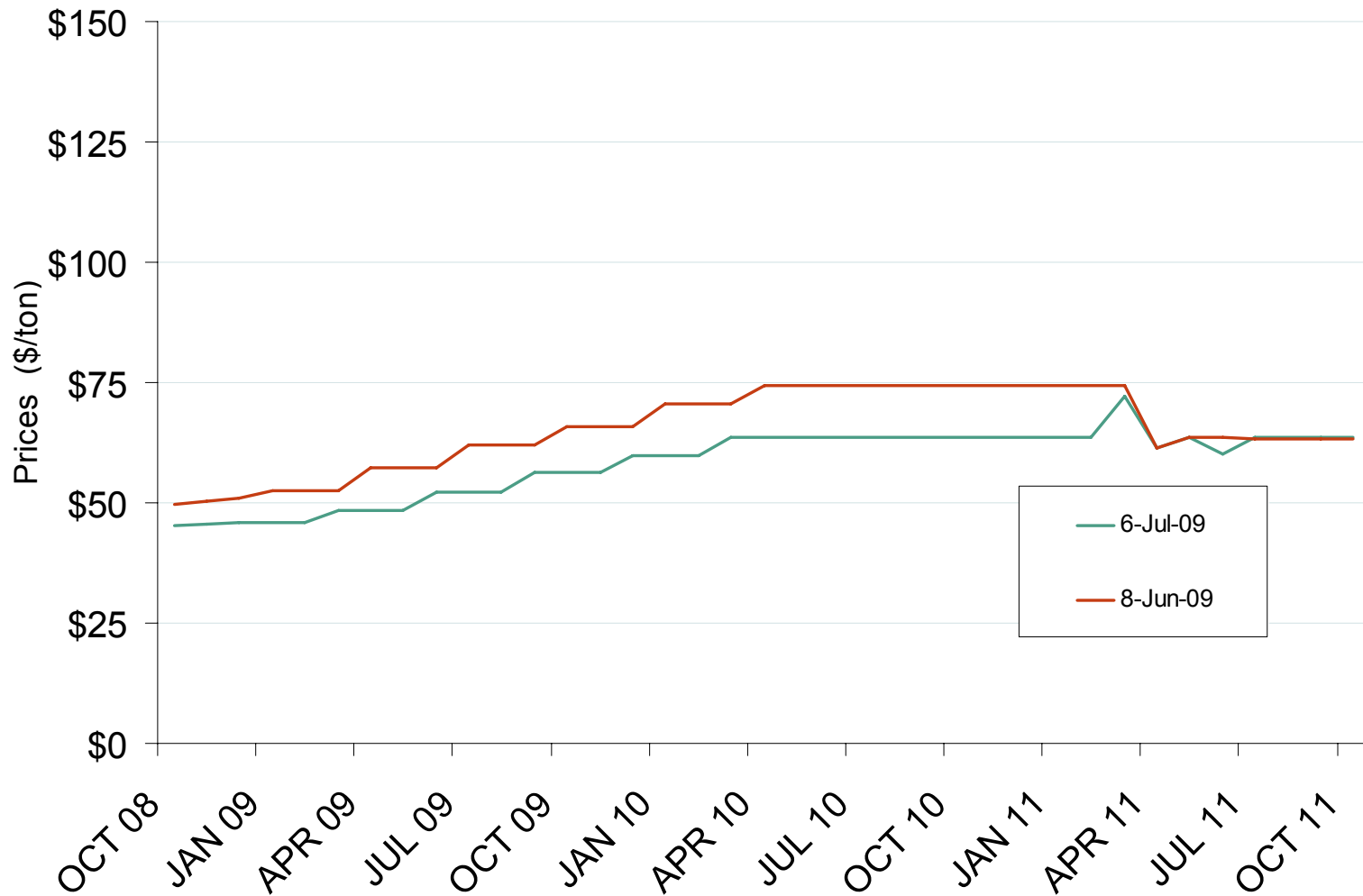


Note: Does not reflect the delivered price of coal; excludes incremental cost of emissions allowances.

Source: Derived from *Bloomberg* data.
July 2009

Updated July 8, 2009

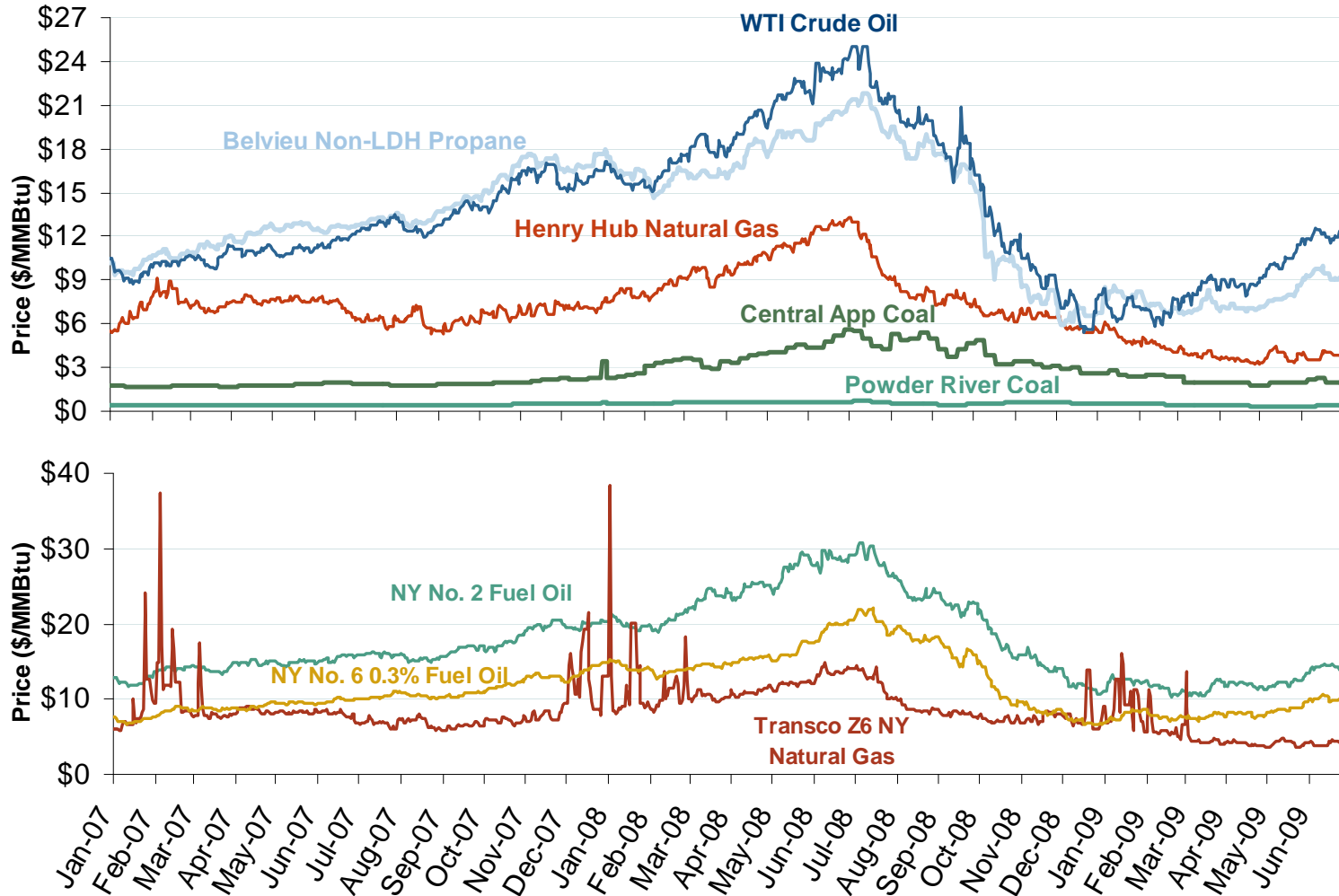
Central Appalachian Coal Futures Prices



Source: Derived from Nymex data.
July 2009

Updated July 8, 2009

Oil, Coal, Natural Gas and Propane Daily Spot Prices

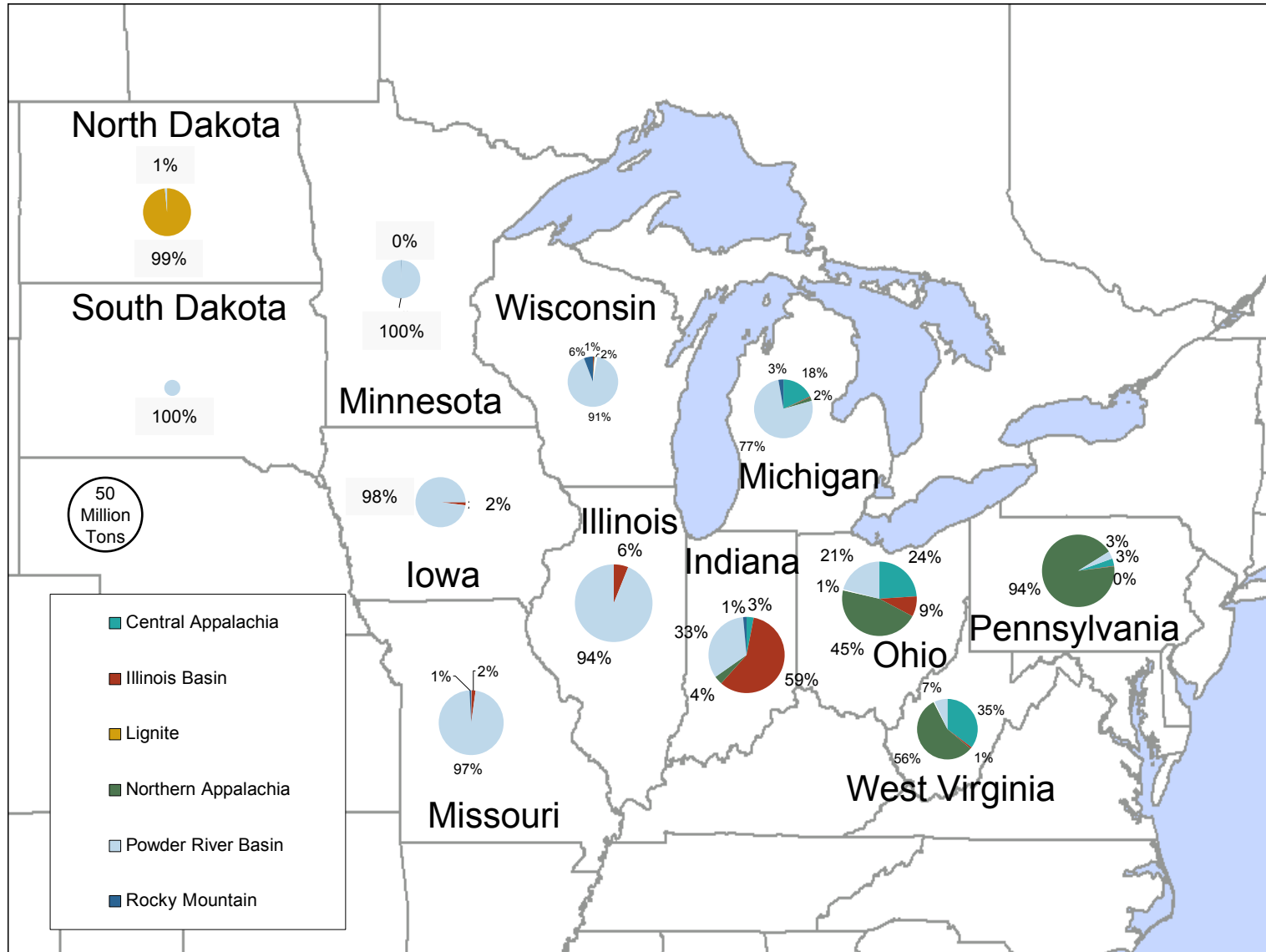


Source: Derived from ICE and Bloomberg data.

Note: Coal prices are quoted in \$/ton. Conversion factors to \$/MMBtu are based on contract specifications of 12,000 btus/pound for Central Appalachian coal and 8800 btus/pound for Powder River Basin coal.

Updated July 8, 2009

2008 Coal Shipment Origins by Supply Basin



Source: Derived from FERC and EIA data.

July 2009

Updated March 23, 2009