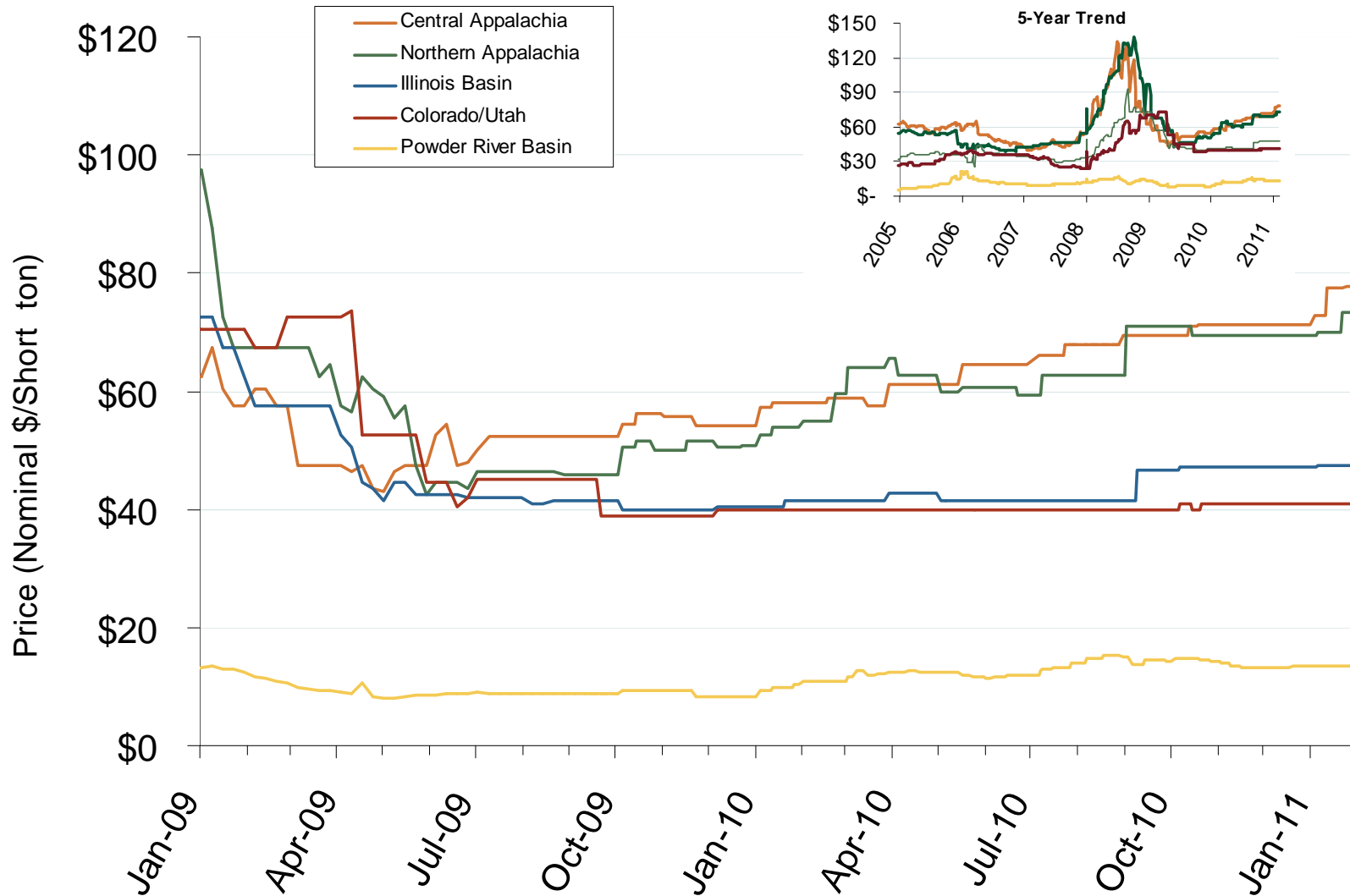


Regional Coal Spot Prices

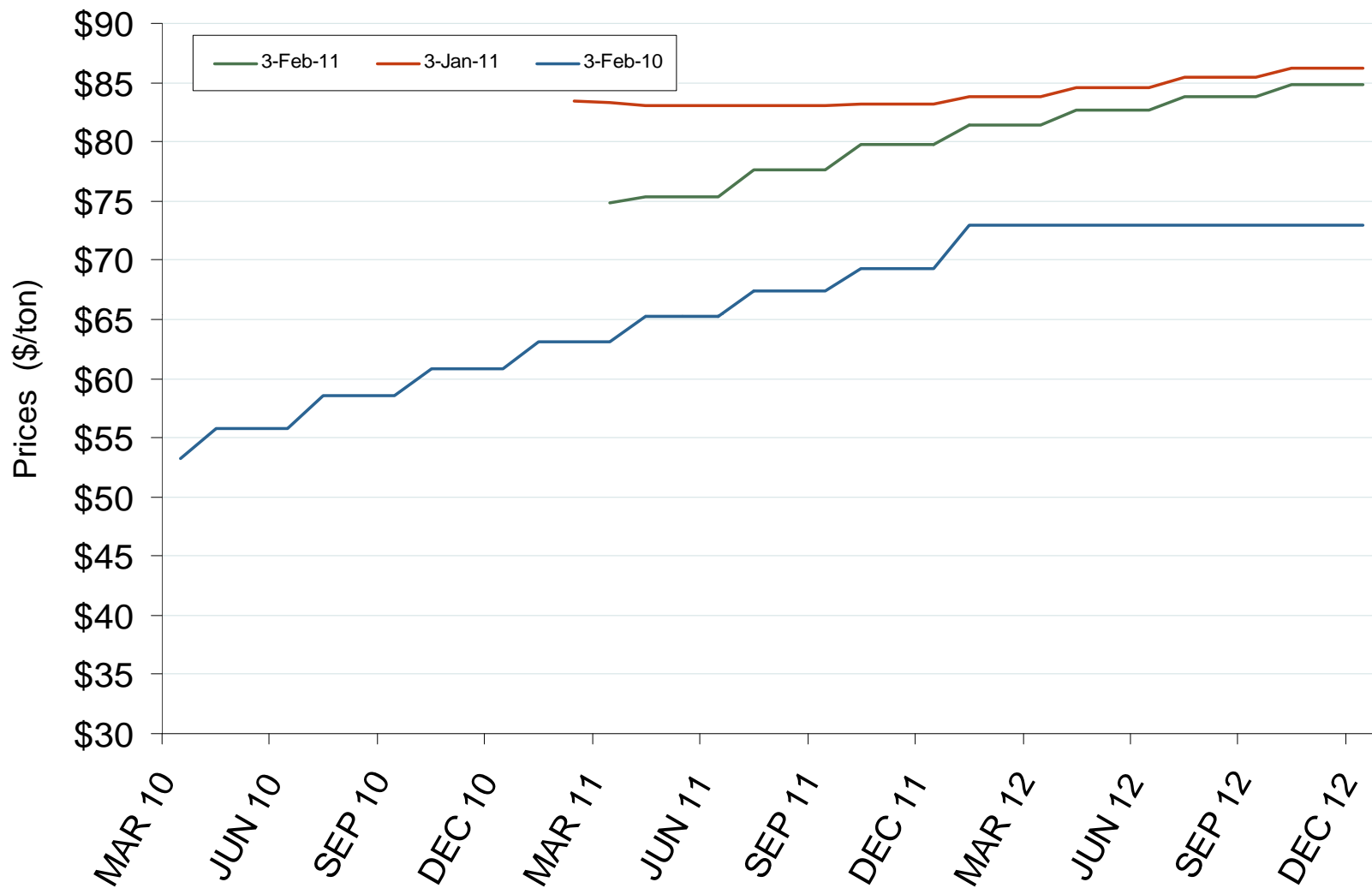


Note: the Central Appalachian (CAPP) coal is priced at Big Sandy. All others are mine mouth prices. Prices do not include transportation costs to a plant, as those can vary widely by contract specifications. Prices exclude incremental cost of emissions allowances.

Source: Derived from Bloomberg data.
February 2011

Updated: February 07, 2011

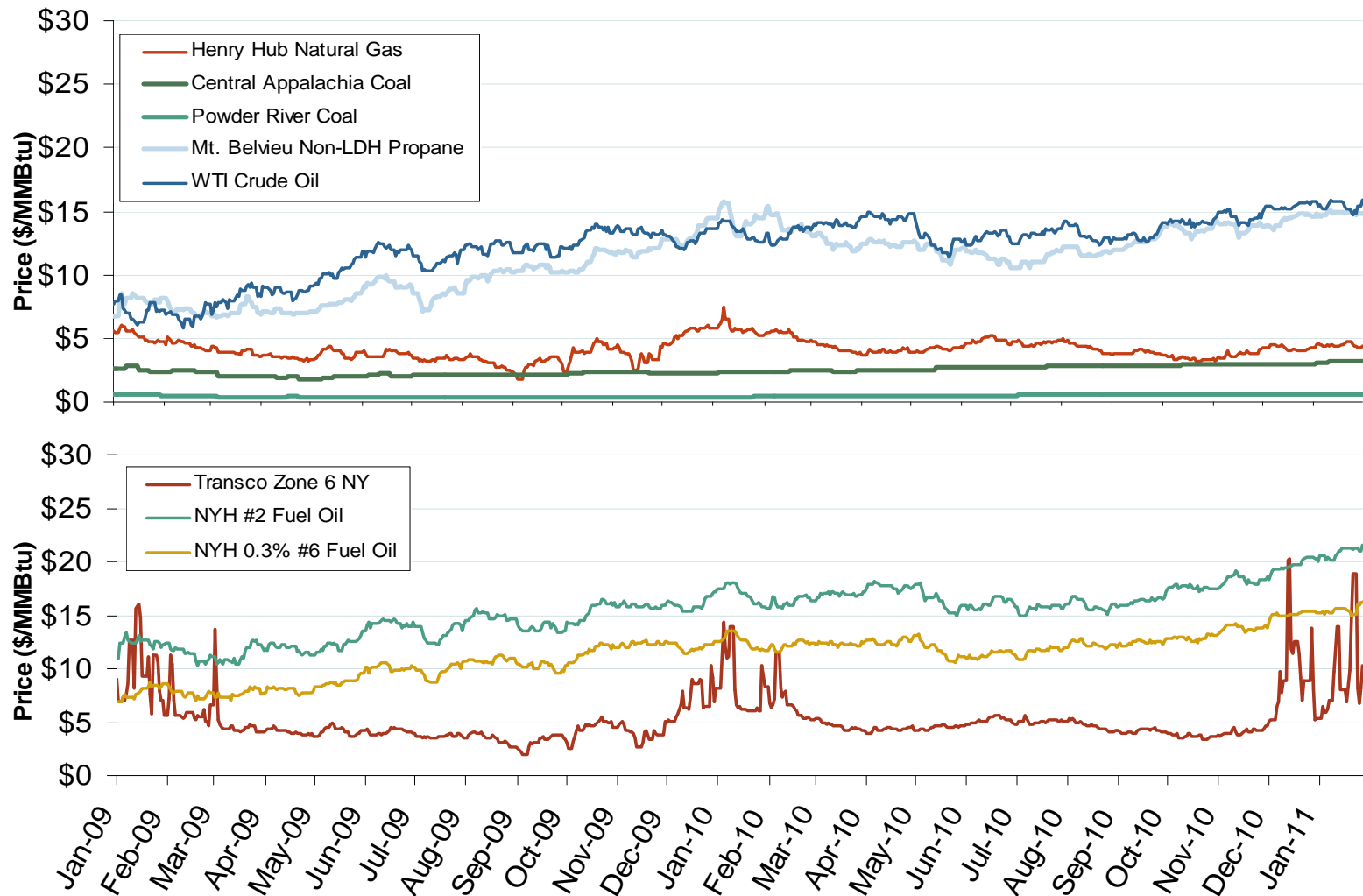
Central Appalachian Coal Futures Prices



Source: Derived from *Nymex data*.

Updated: February 07, 2011

Oil, Coal, Natural Gas and Propane Daily Spot Prices

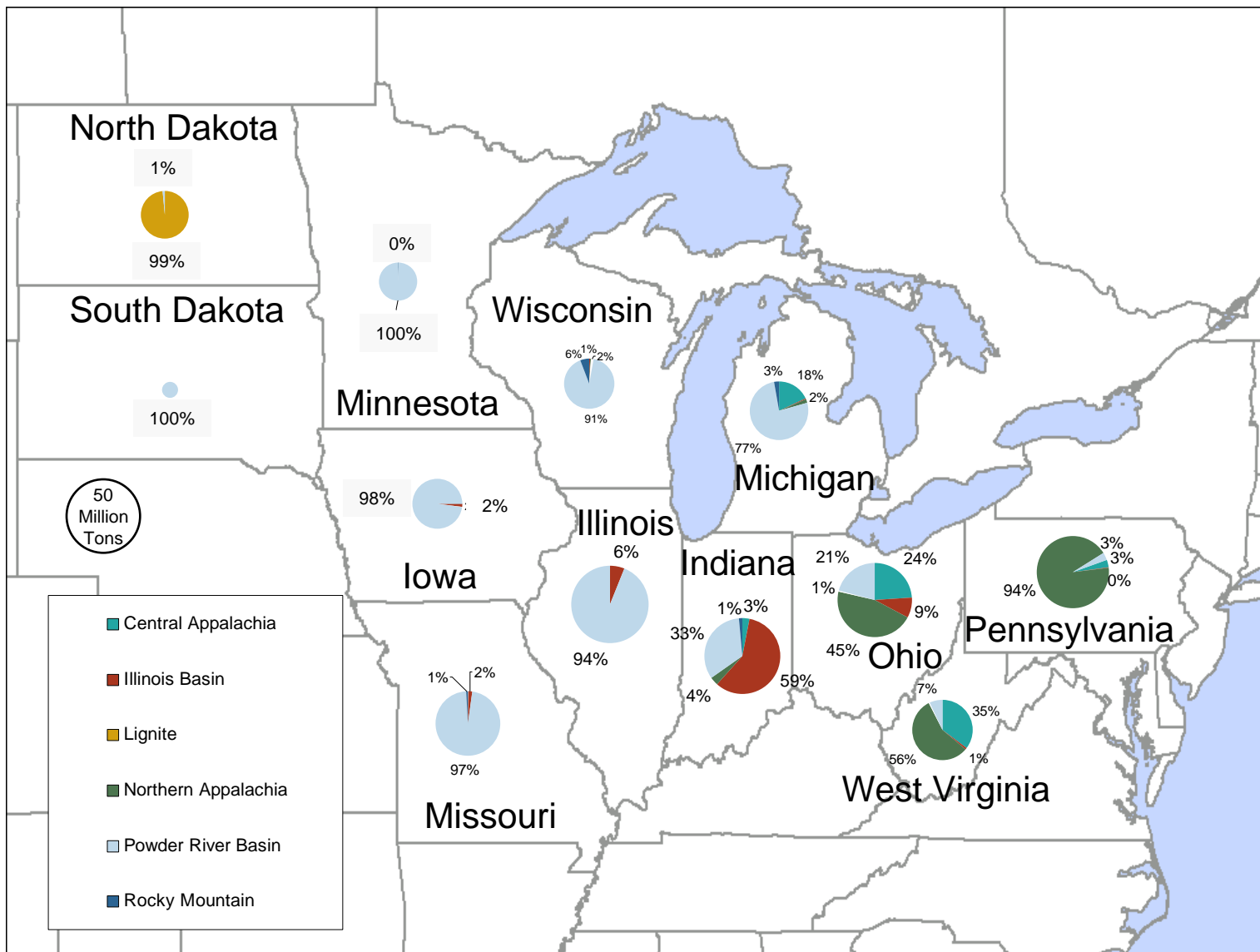


Source: Derived from ICE and Bloomberg data.

Note: Coal prices are quoted in \$/ton. Conversion factors to \$/MMBtu are based on contract specifications of 12,000 btus/pound for Central Appalachian coal and 8800 btus/pound for Powder River Basin coal.

Updated: February 07, 2011

2008 Coal Shipment Origins by Supply Basin

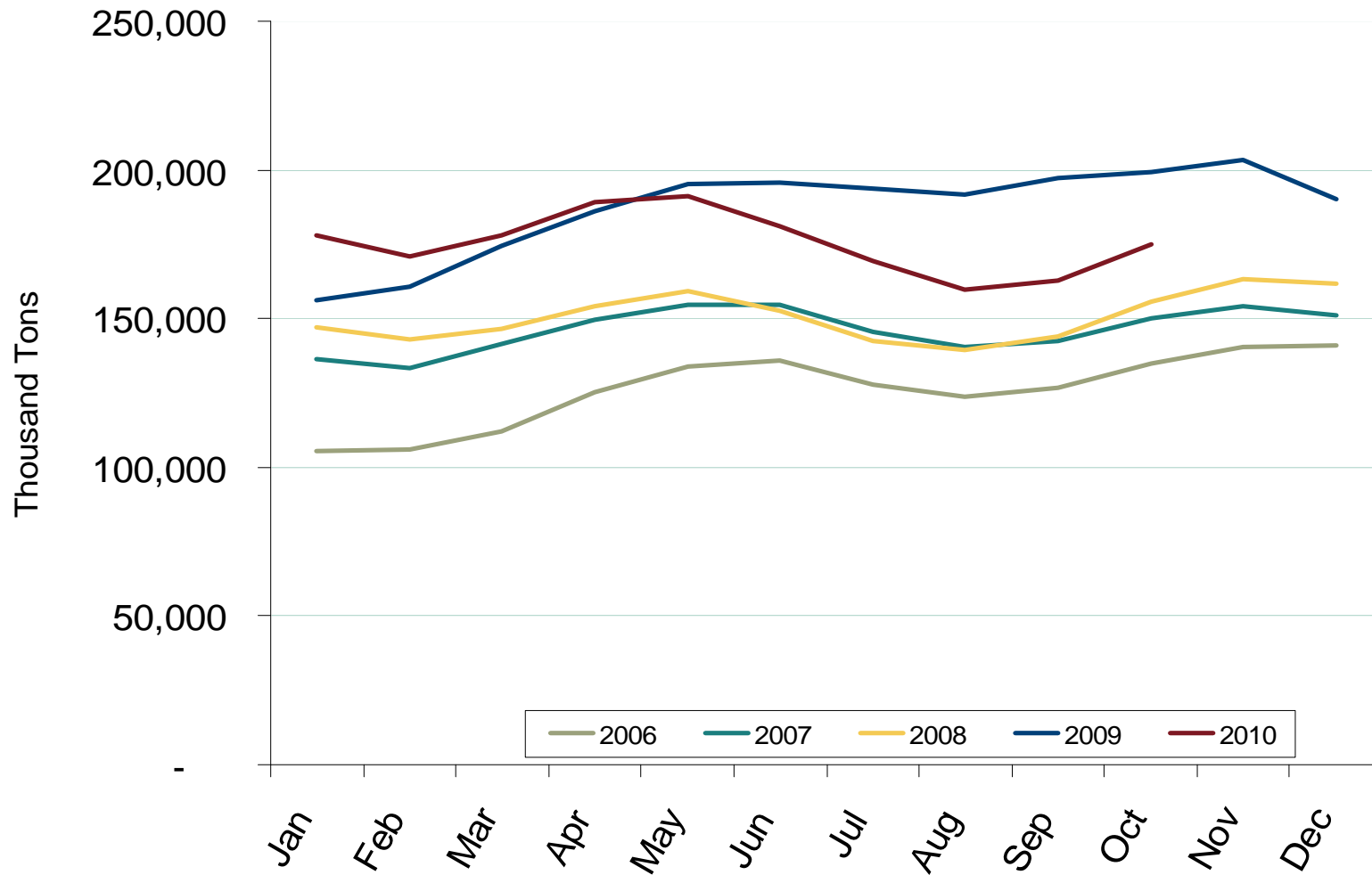


Source: Derived from FERC and EIA data.

February 2011

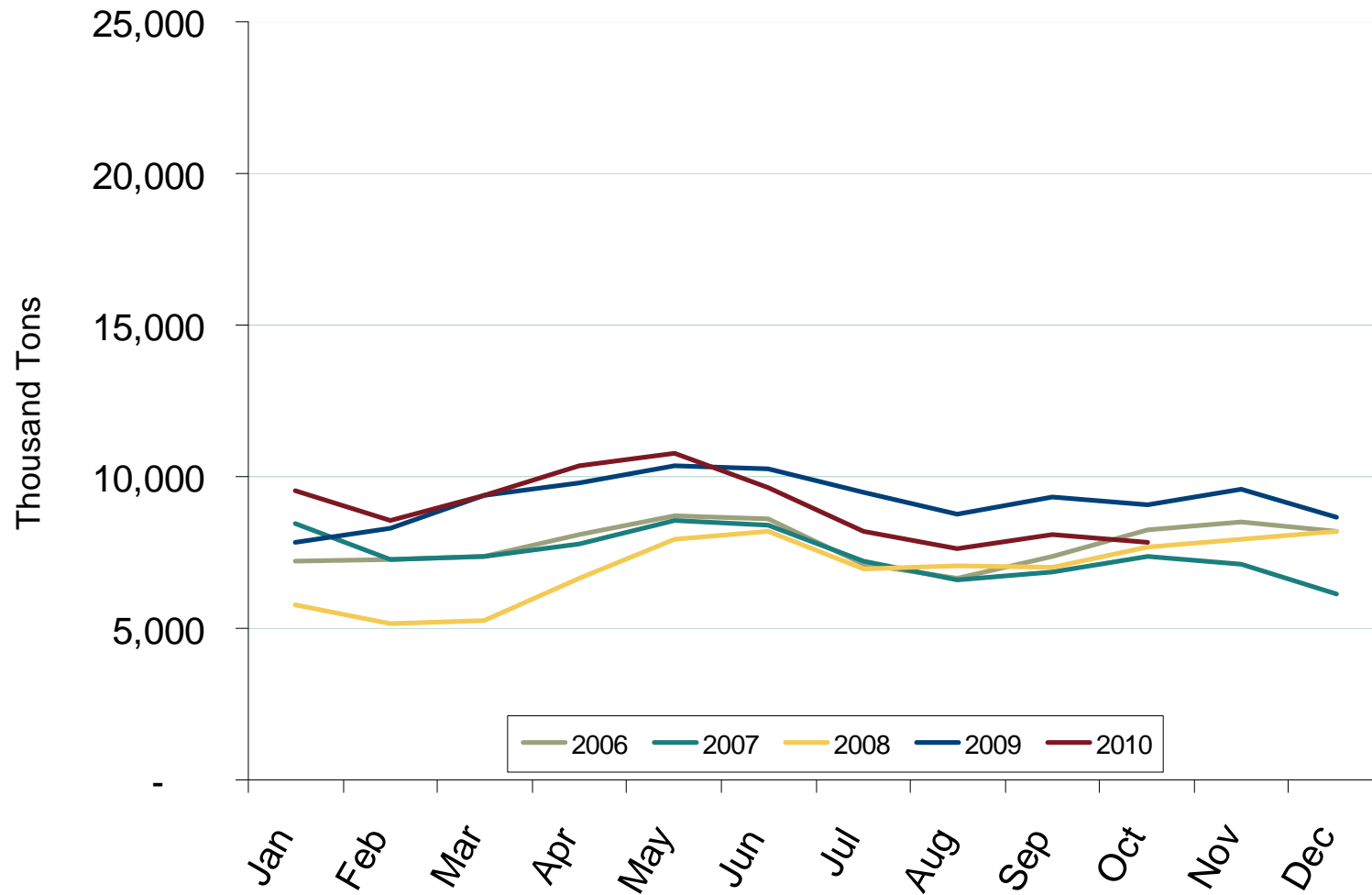
Updated March 23, 2009

U.S. Coal Stockpiles at Electric Power Generating Facilities

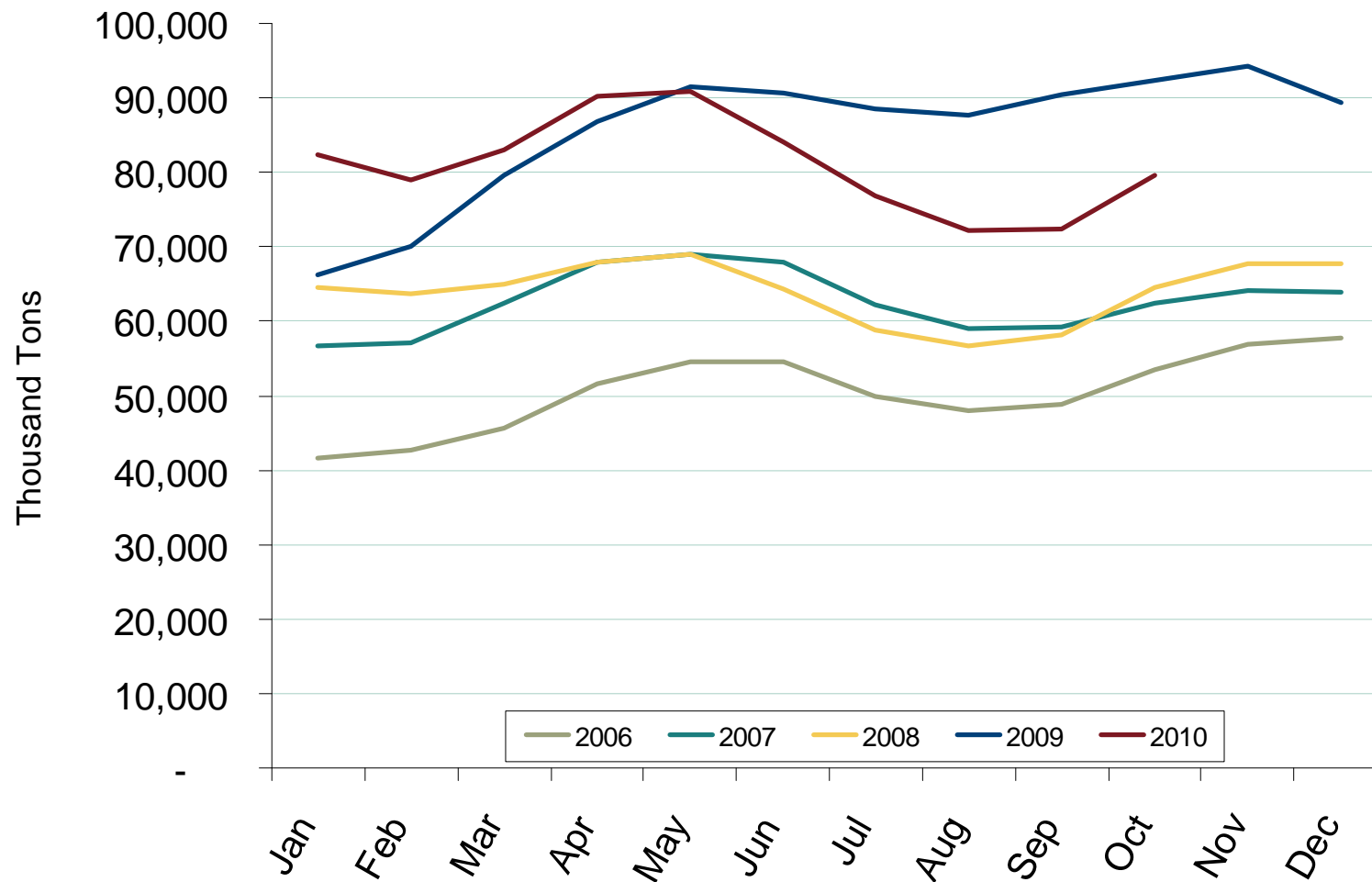


Source: Derived from *Energy Information Administration*. Excludes Industrial and Commercial Plants.

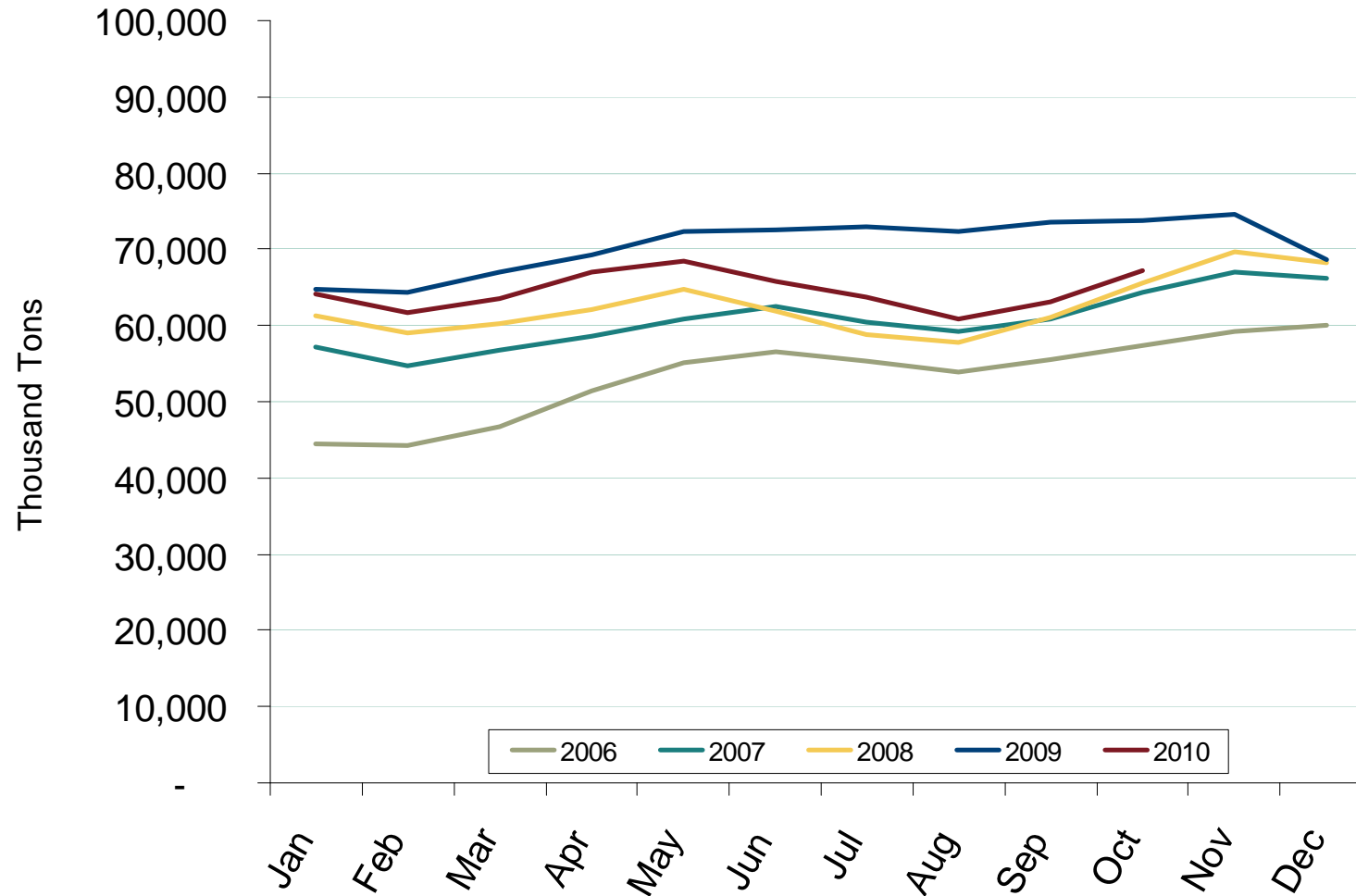
Northeast Coal Stockpiles at Electric Power Generating Facilities



Southeast Coal Stockpiles at Electric Power Generating Facilities



Midwest Coal Stockpiles at Electric Power Generating Facilities



Western Coal Stockpiles at Electric Power Generating Facilities

