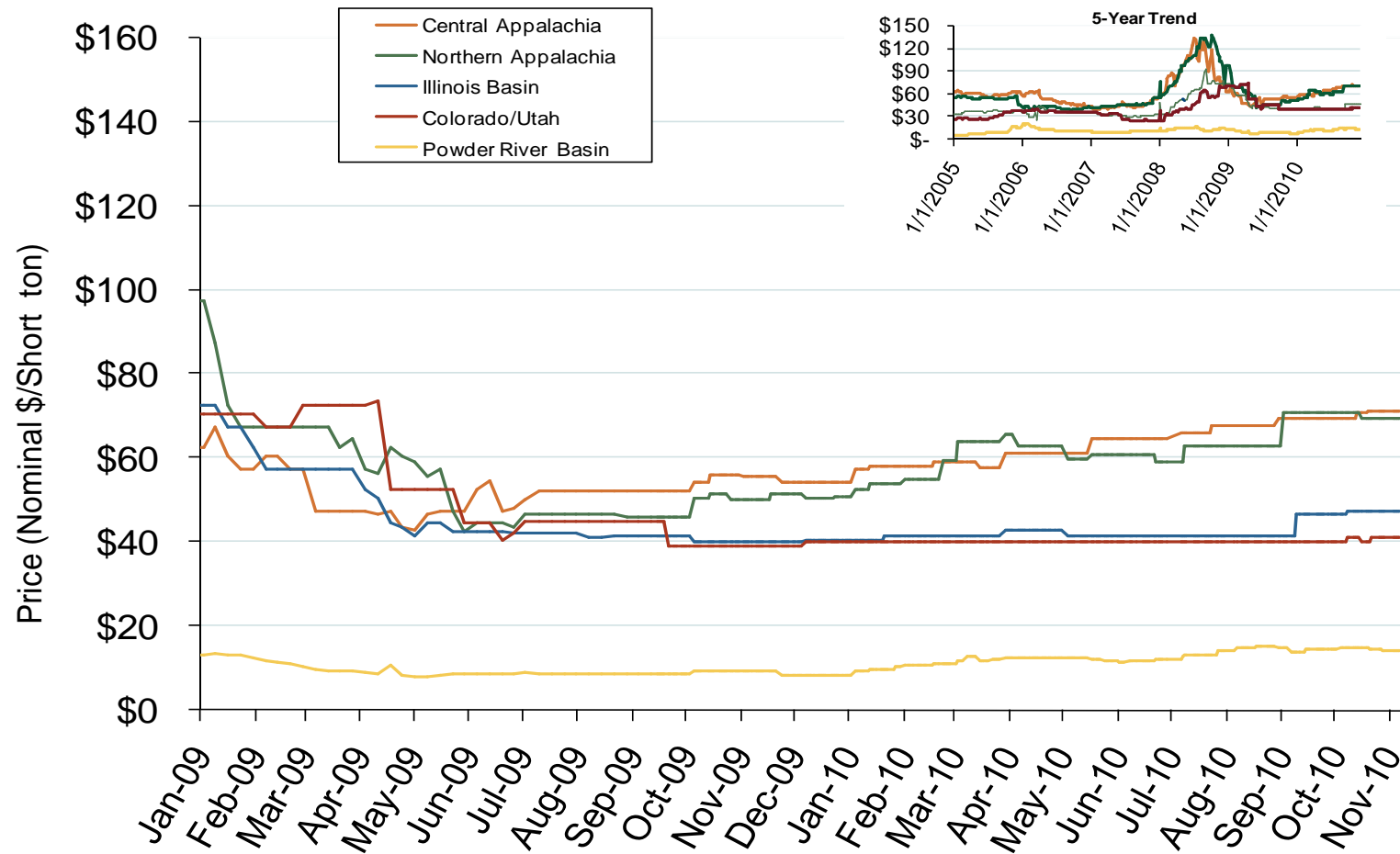


## Regional Coal Spot Prices

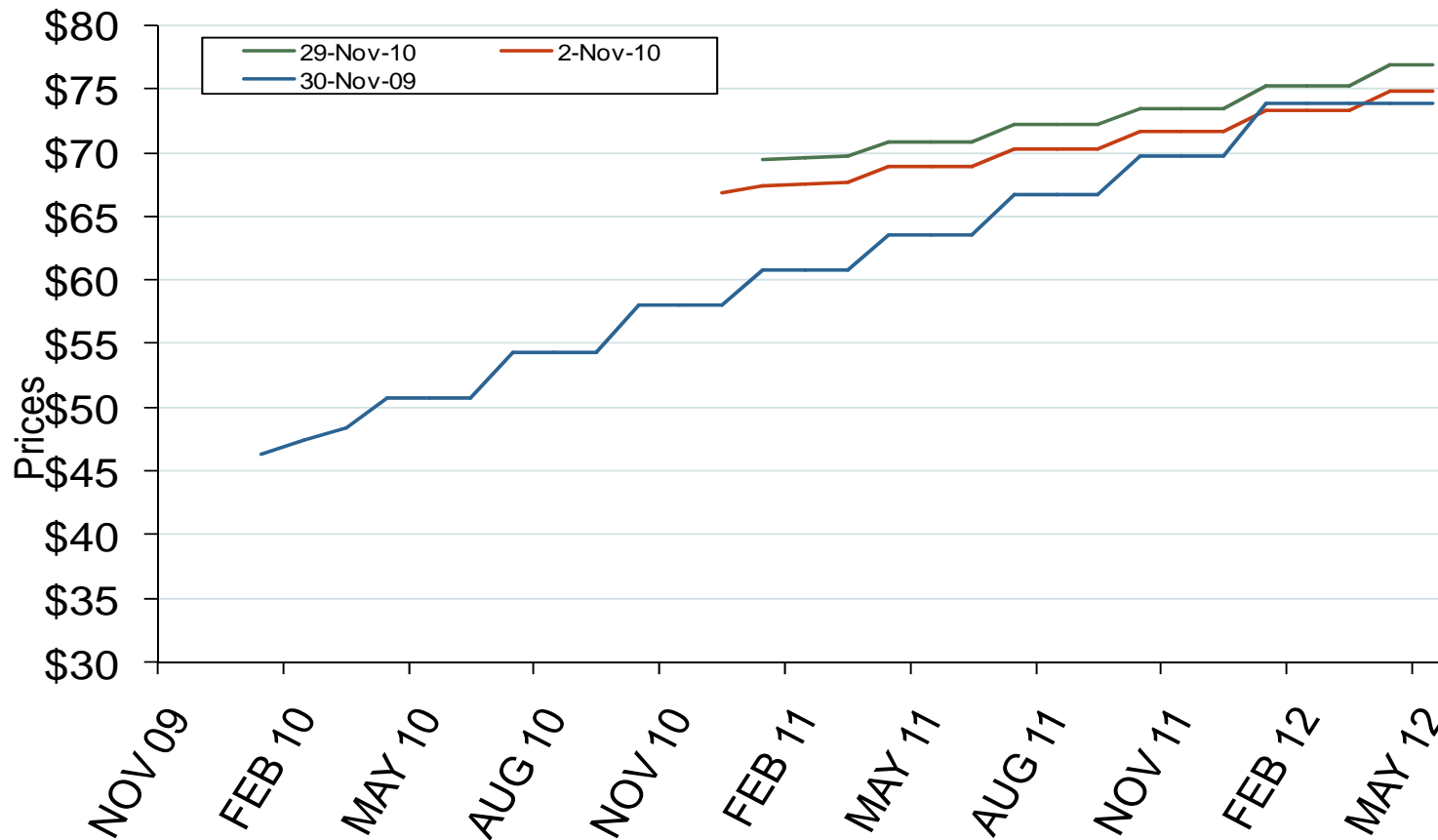


Note: the Central Appalachian (CAPP) coal is priced at Big Sandy. All others are mine mouth prices. Prices do not include transportation costs to a plant, as those can vary widely by contract specifications. Prices exclude incremental cost of emissions allowances.

Source: Derived from *Bloomberg* data.  
December 2010

Updated December 8, 2010

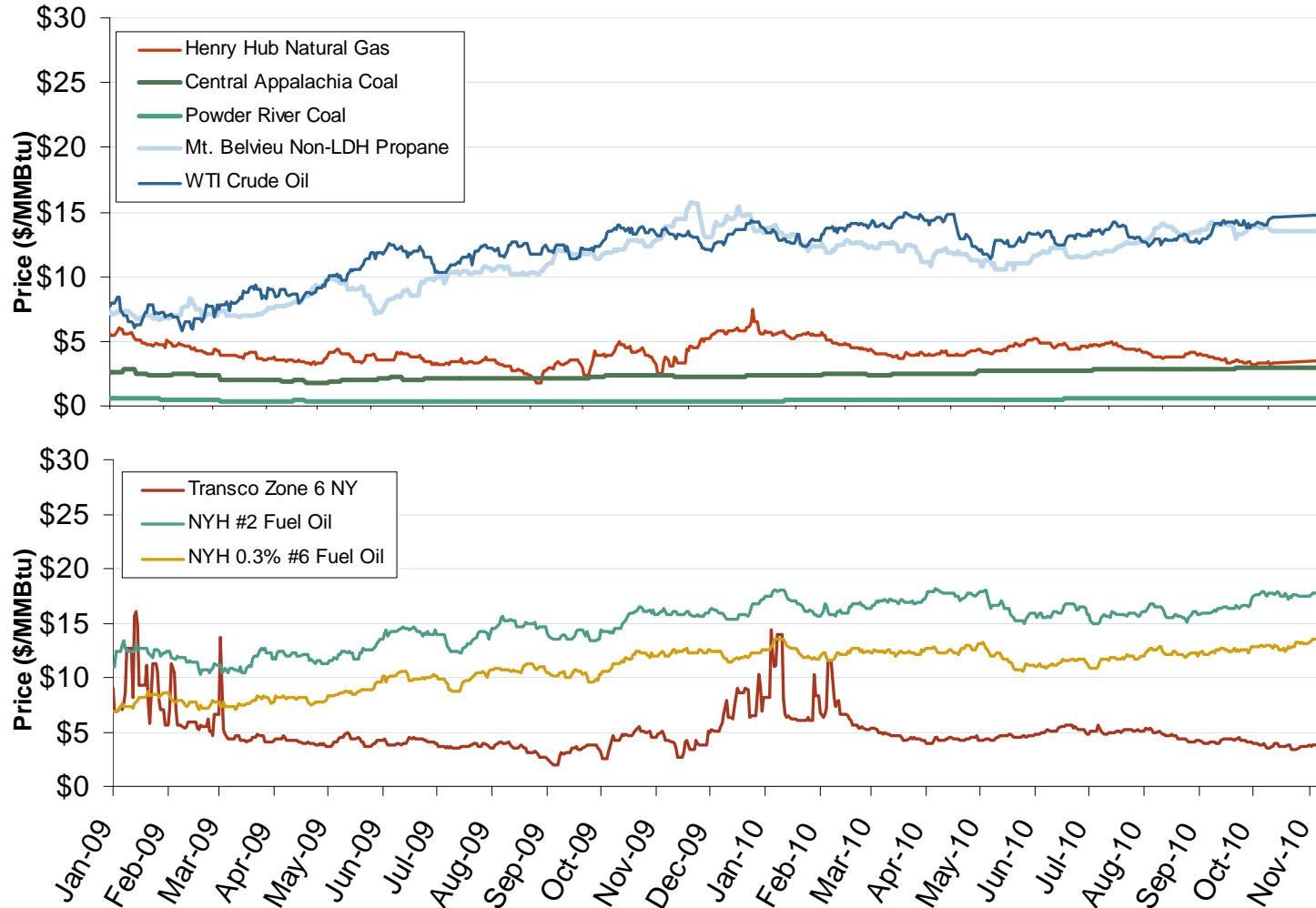
## Central Appalachian Coal Futures Prices



Source: Derived from Nymex data.  
December 2010

Updated December 8, 2010

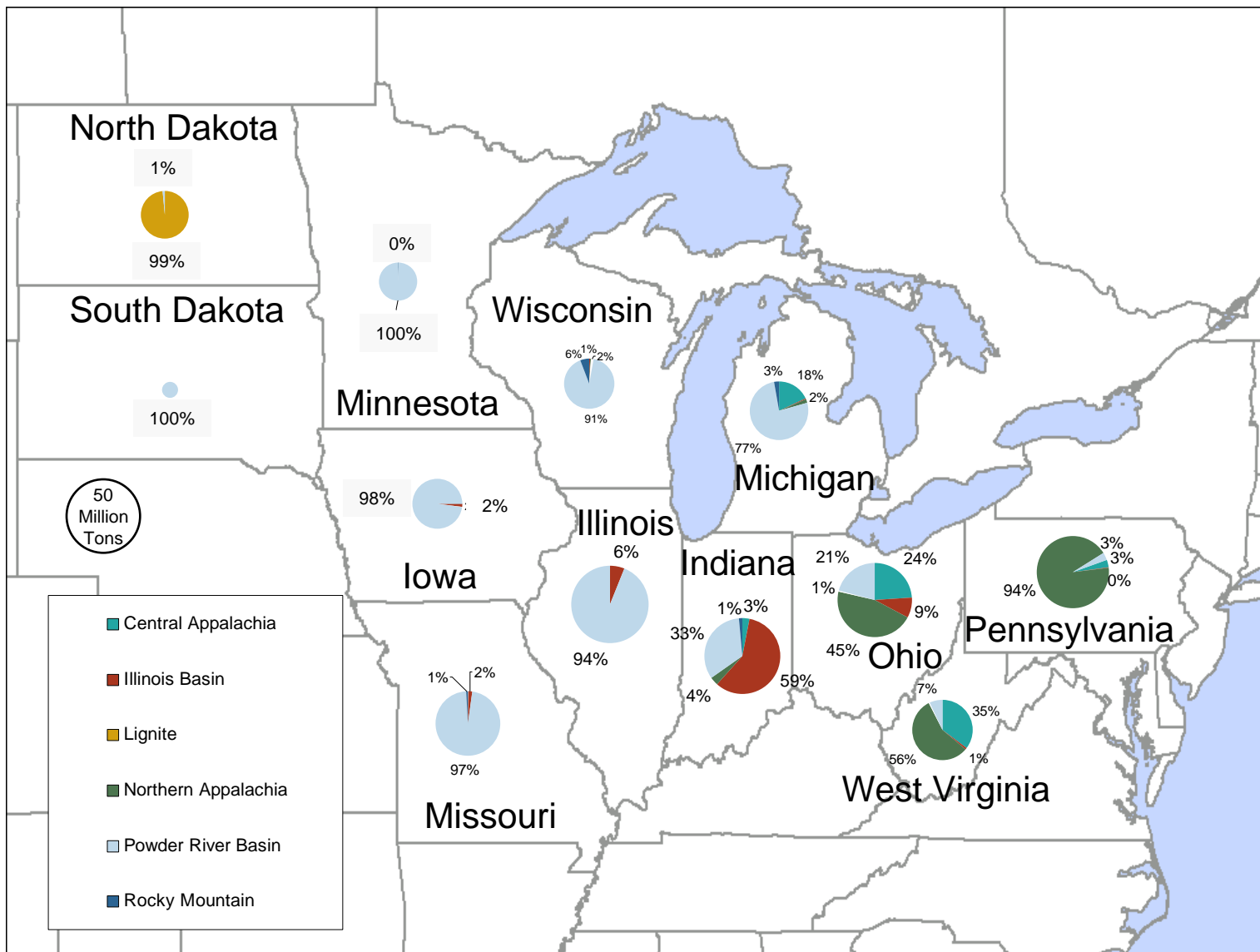
# Oil, Coal, Natural Gas and Propane Daily Spot Prices



Source: Derived from ICE and Bloomberg data.

Note: Coal prices are quoted in \$/ton. Conversion factors to \$/MMBtu are based on contract specifications of 12,000 btus/pound for Central Appalachian coal and 8800 btus/pound for Powder River Basin coal.

# 2008 Coal Shipment Origins by Supply Basin



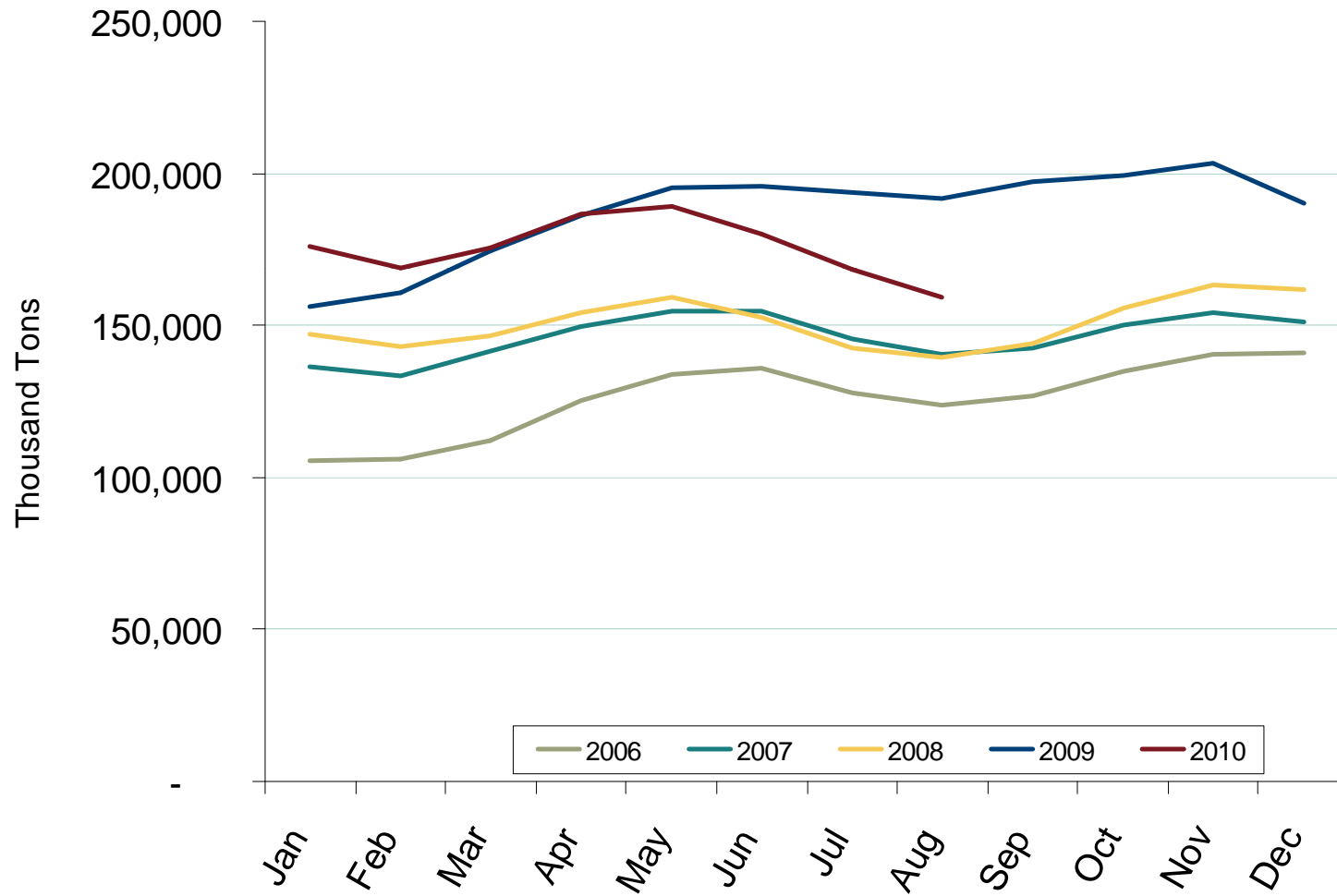
Source: Derived from FERC and EIA data.

December 2010

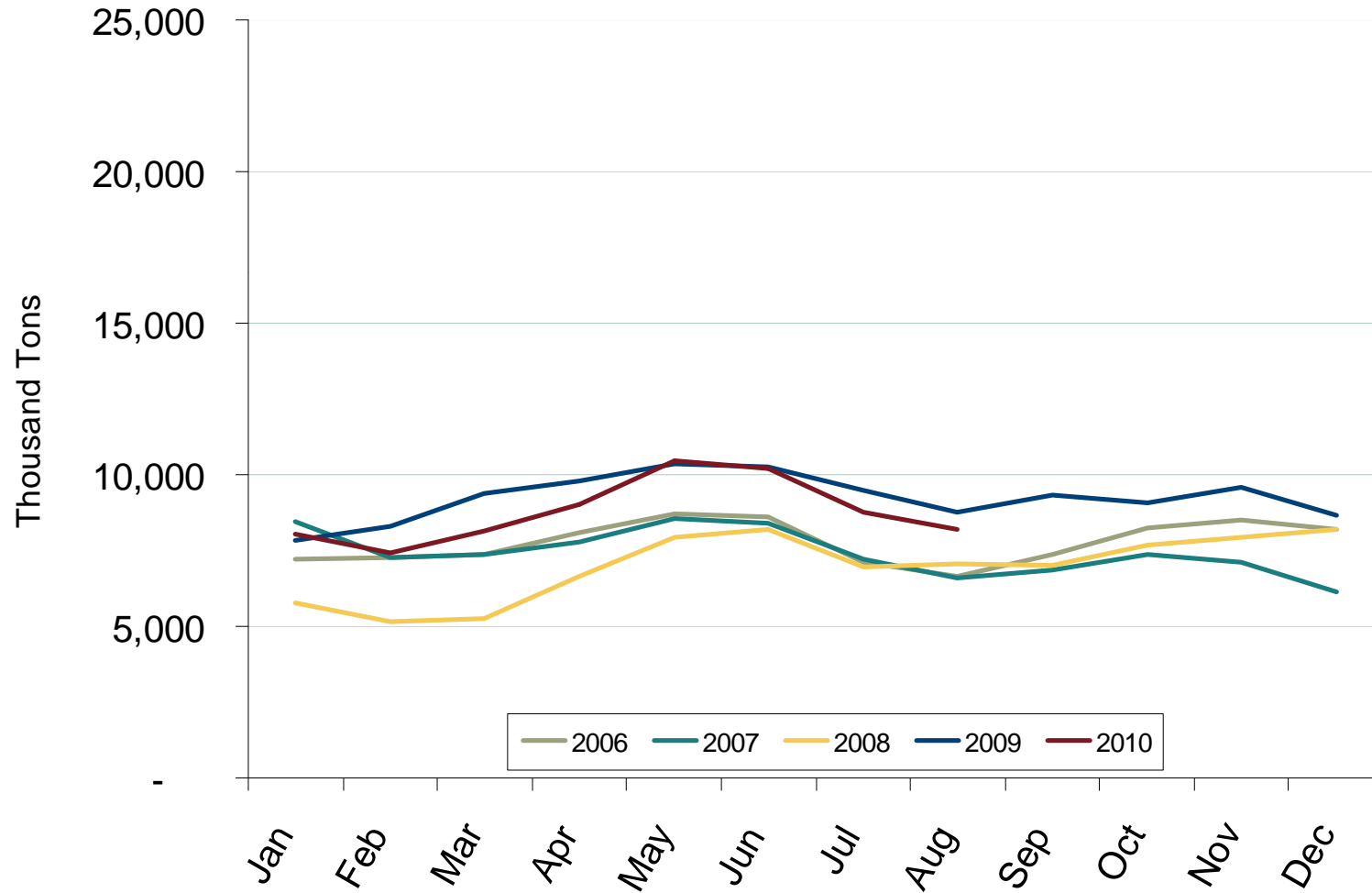
Updated March 23, 2009

3021

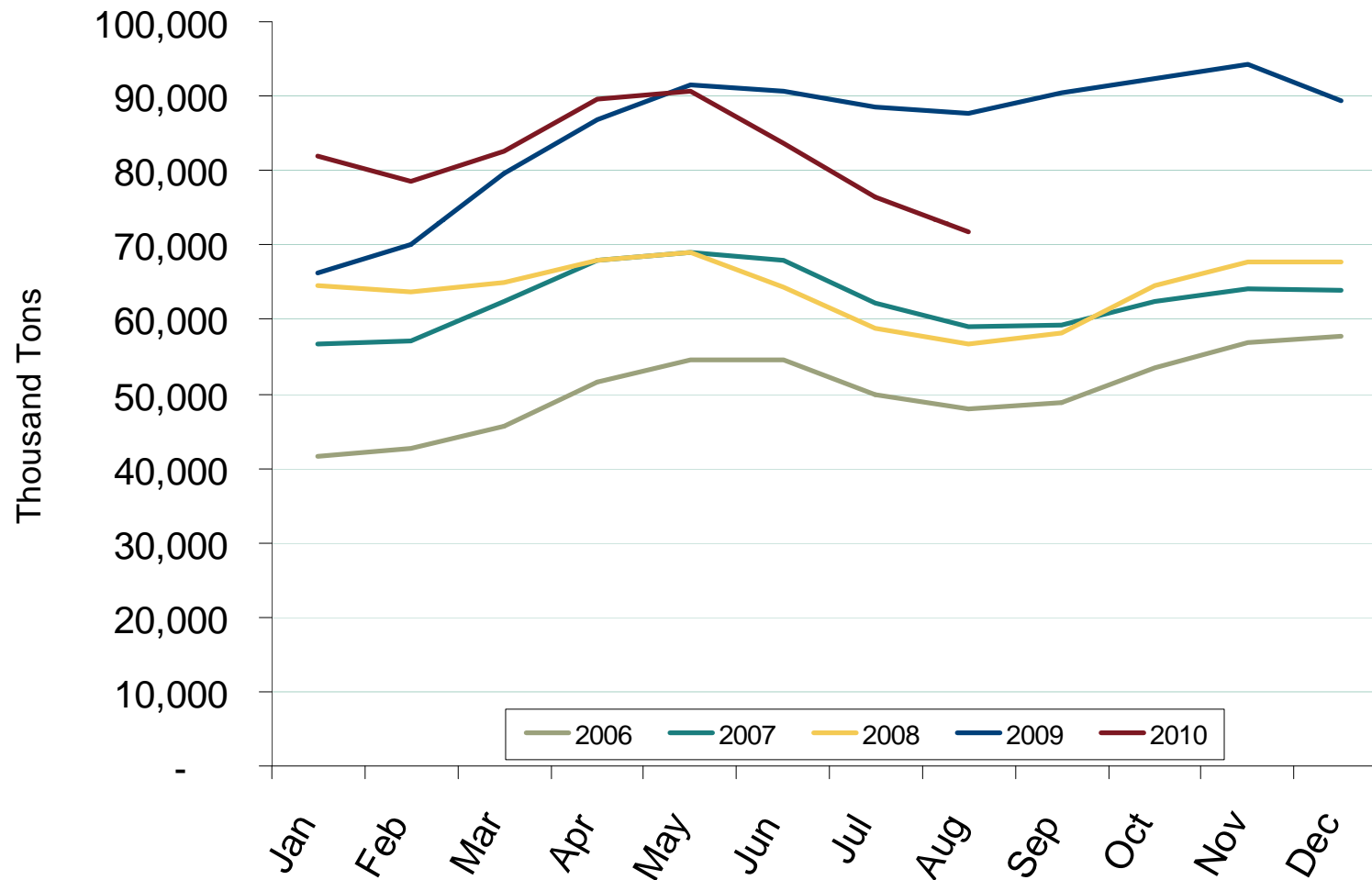
## U.S. Coal Stockpiles at Electric Power Generating Facilities



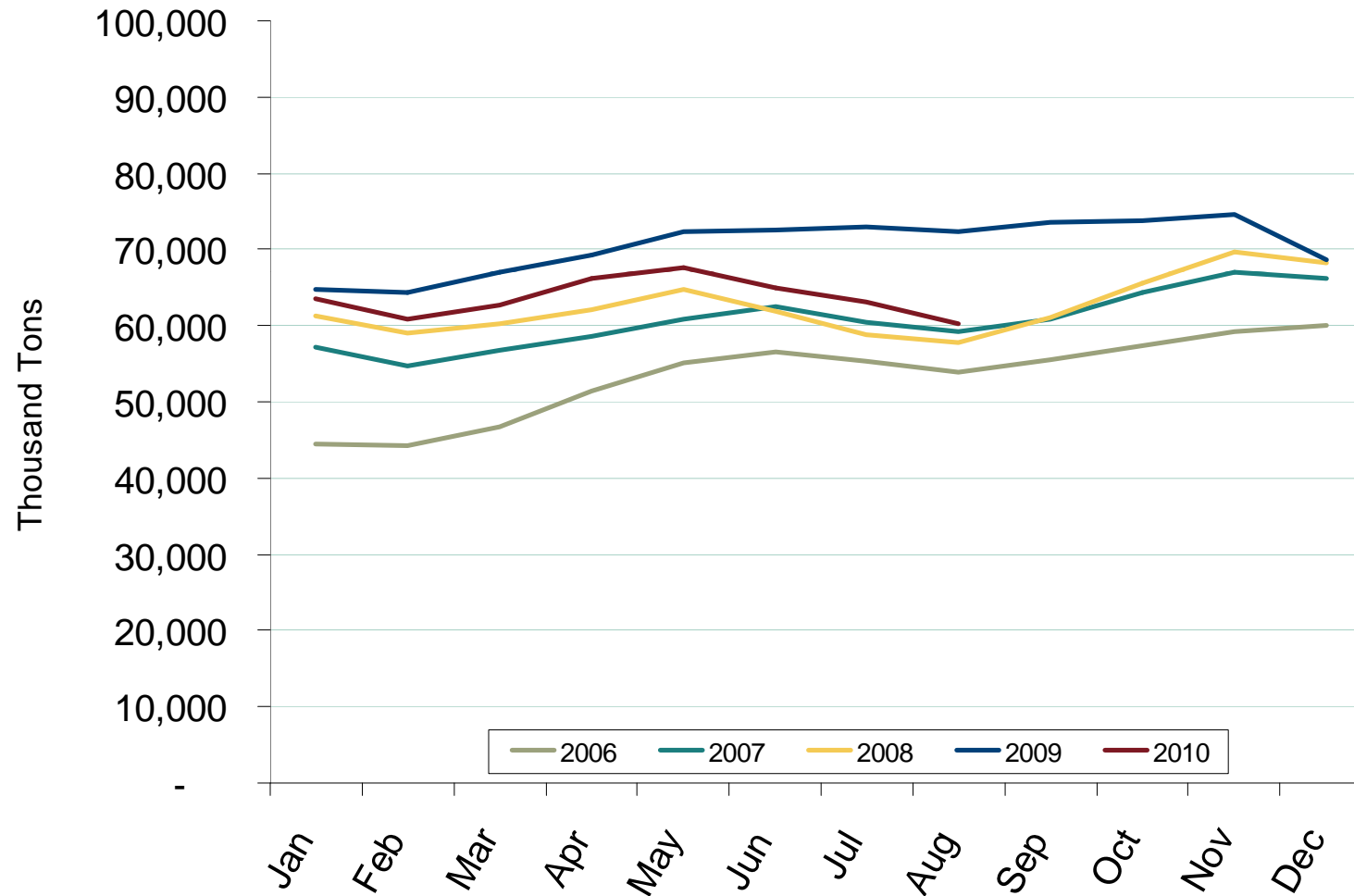
## Northeast Coal Stockpiles at Electric Power Generating Facilities



## Southeast Coal Stockpiles at Electric Power Generating Facilities



## Midwest Coal Stockpiles at Electric Power Generating Facilities





## Western Coal Stockpiles at Electric Power Generating Facilities

