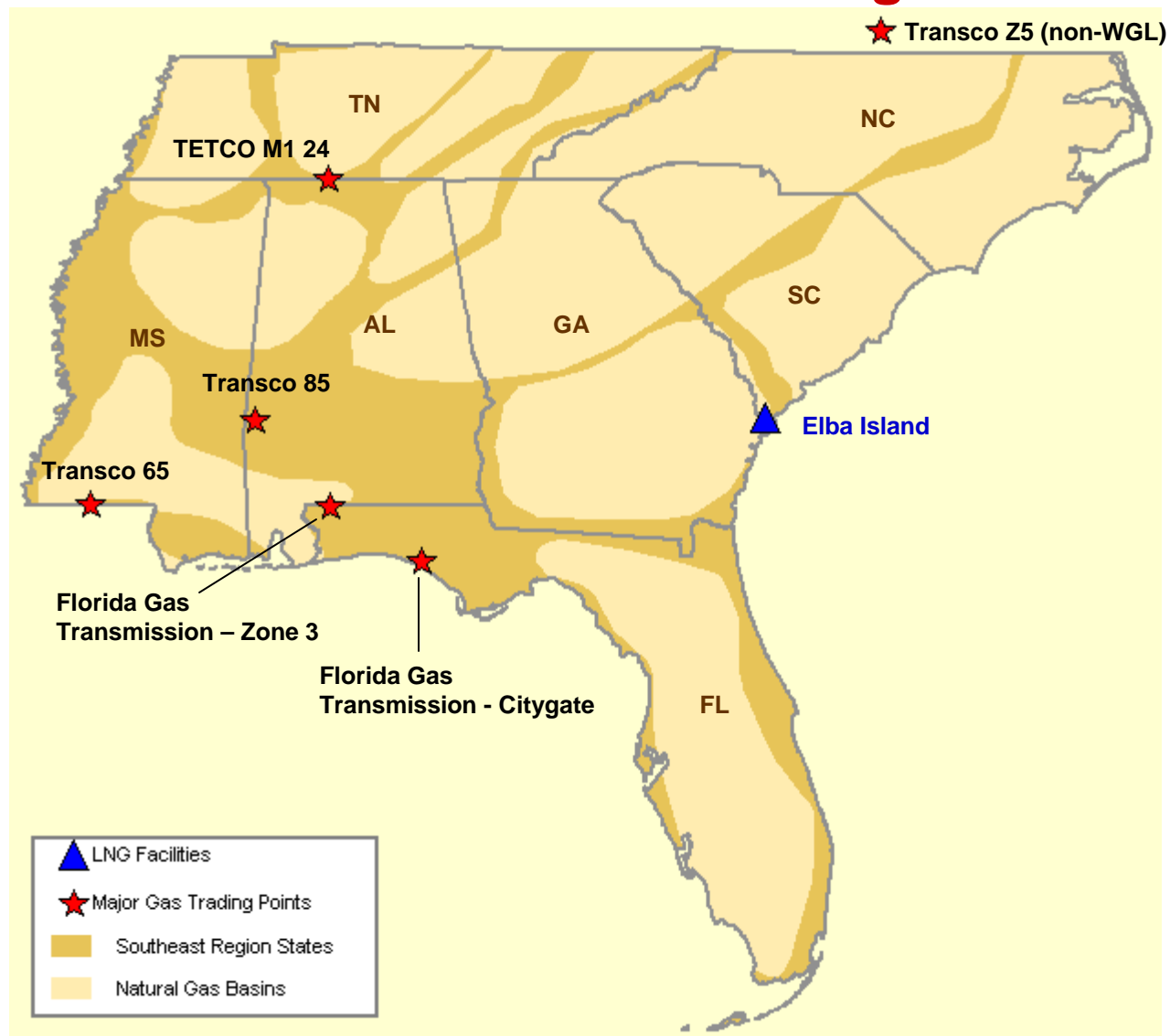


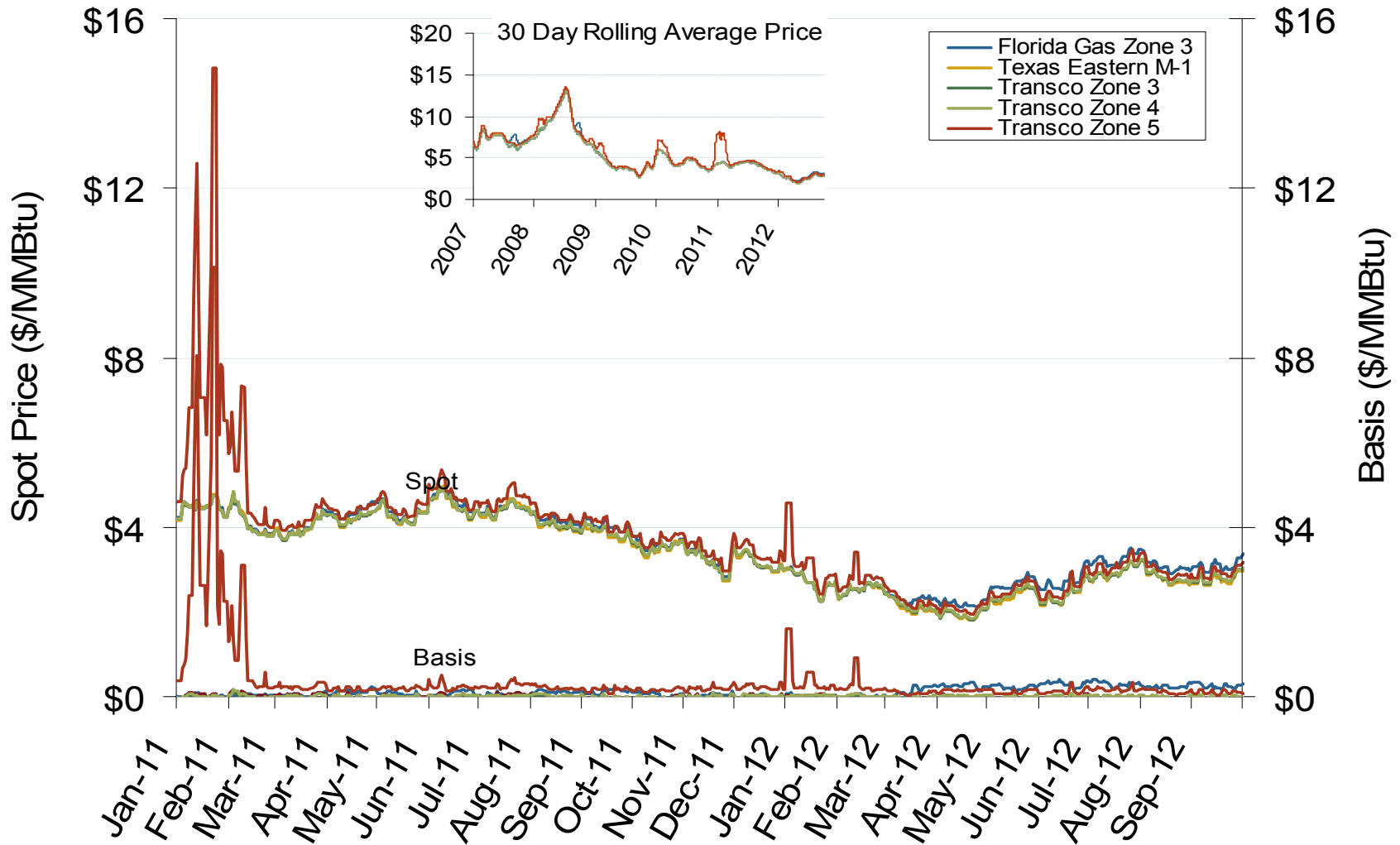
Southeast Natural Gas Region



Southeast Annual Average Spot Hub Prices

Annual Average Day Ahead Prices (\$/MMBtu)						
	2007	2008	2009	2010	2011	5-Year Avg
Henry Hub	\$6.94	\$8.85	\$3.92	\$4.37	\$3.99	\$5.61
Florida Gas Zone 3	\$7.32	\$9.13	\$3.98	\$4.42	\$4.05	\$5.78
Transco Station 65	\$7.05	\$8.92	\$3.96	\$4.38	\$3.98	\$5.66
Transco Zone 4	\$7.17	\$8.98	\$3.98	\$4.39	\$4.00	\$5.70
Transco Zone 5	\$7.41	\$9.46	\$4.33	\$5.04	\$4.52	\$6.15
Tetco M1	\$7.07	\$8.98	\$3.98	\$4.40	\$3.98	\$5.68

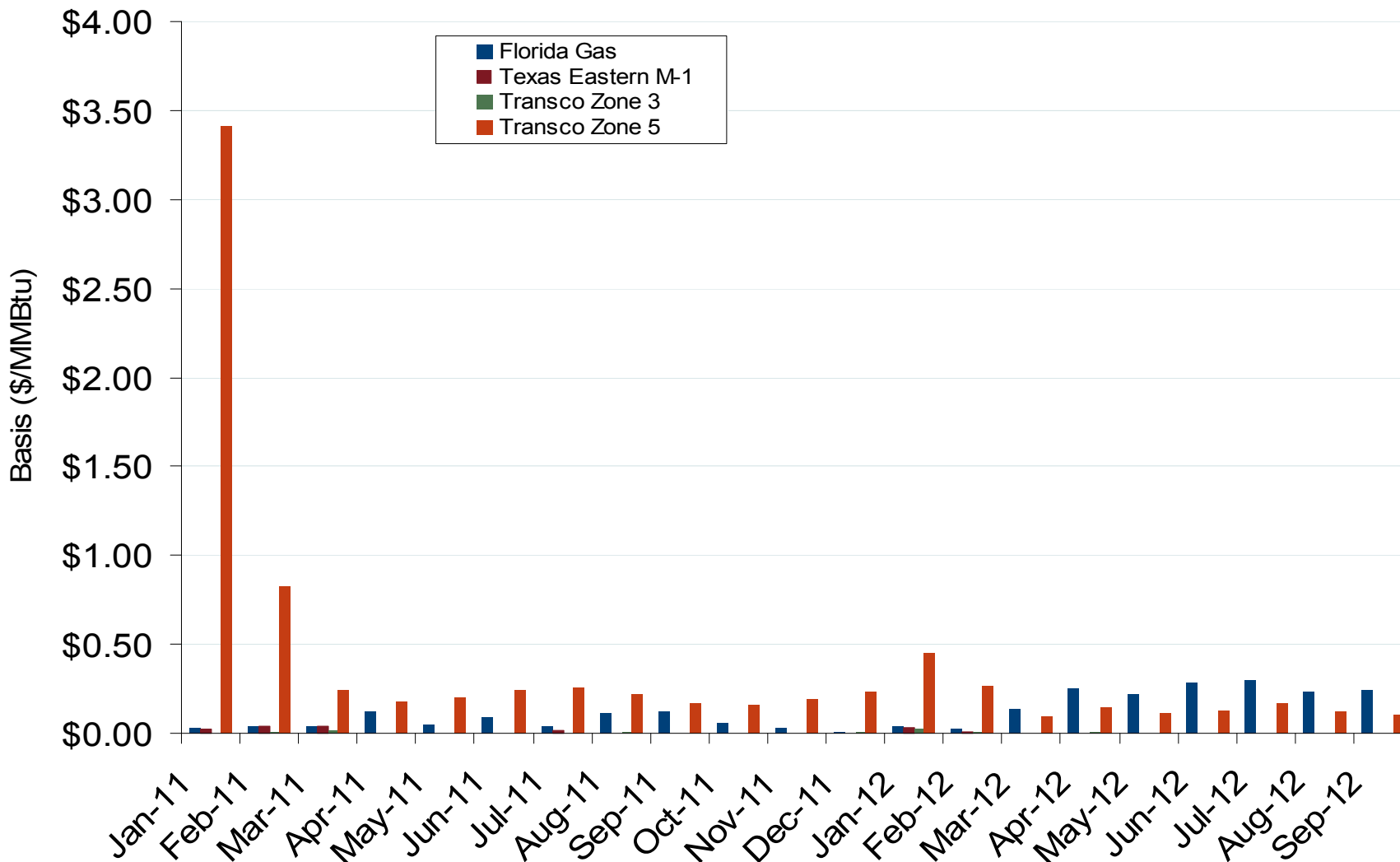
Southeastern Day-Ahead Hub Spot Prices and Basis



Southeast Natural Gas Market: Average Basis to Henry Hub

Federal Energy Regulatory Commission • Market Oversight • www.ferc.gov/oversight

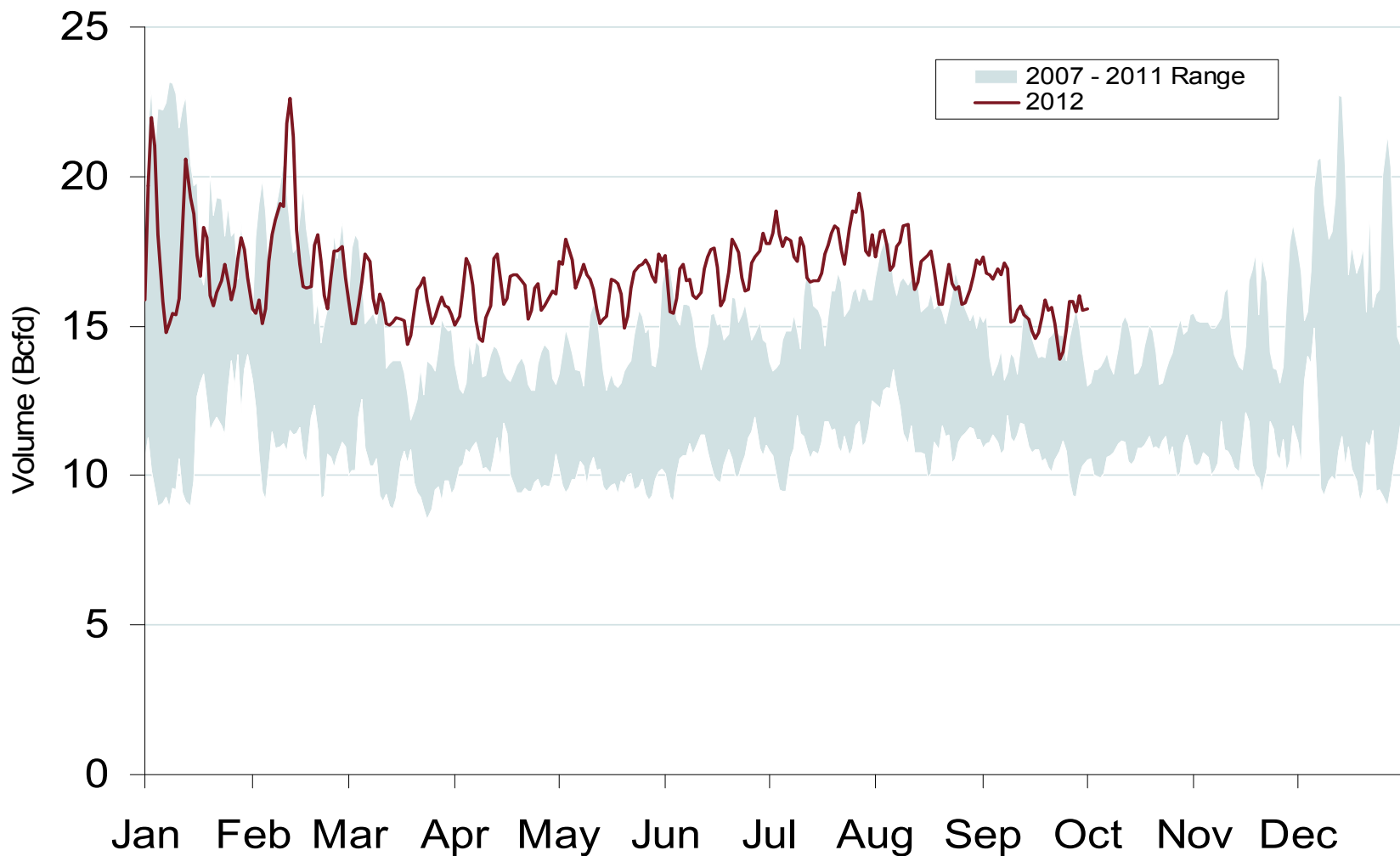
Southeastern Monthly Average Basis Value to Henry Hub



Source: Derived from *Platts* data
October 2012

Updated: October 01, 2012

Daily Southeast Natural Gas Demand All Sectors



Southeast Natural Gas Consumption for Power Generation

