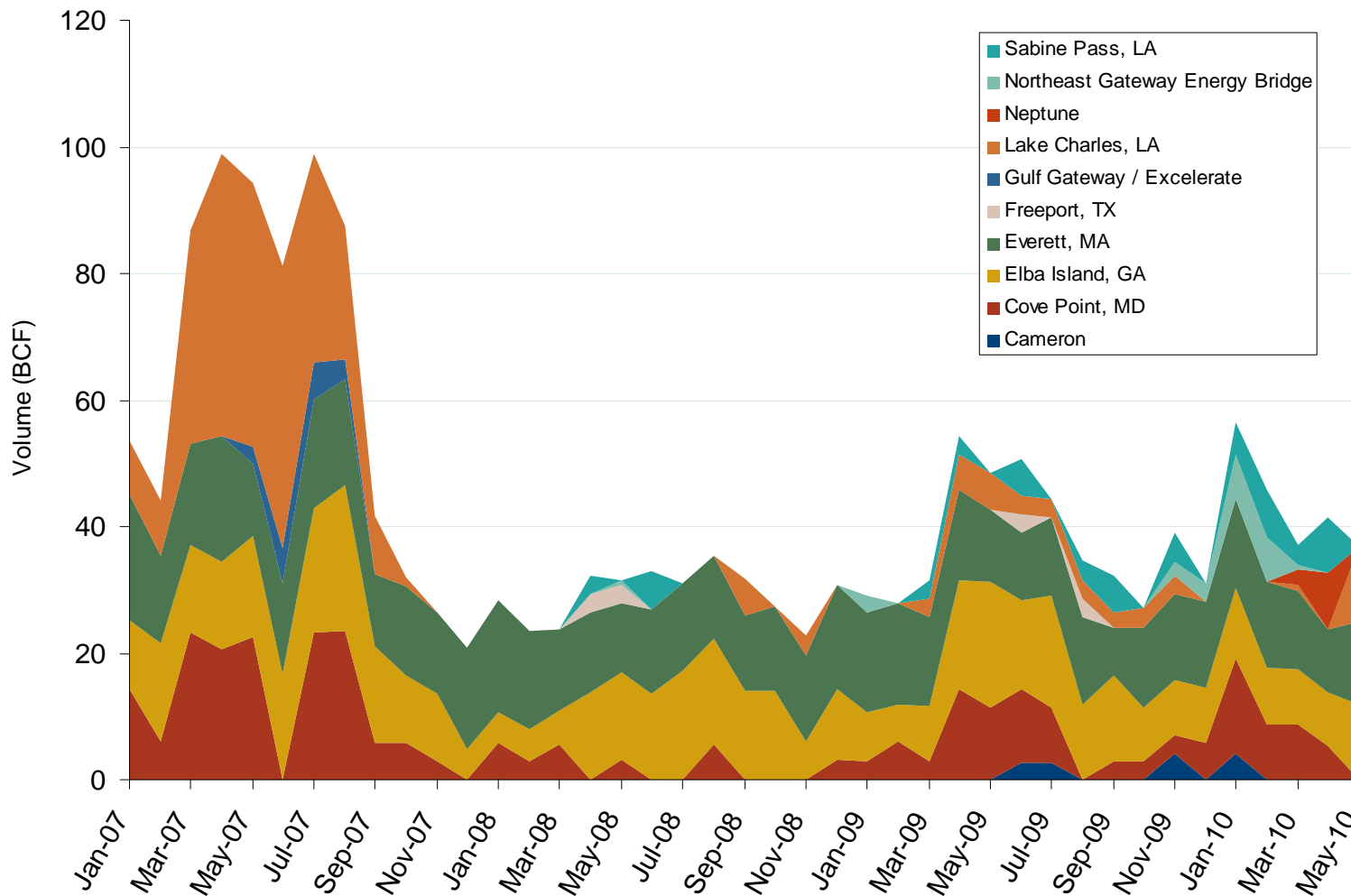


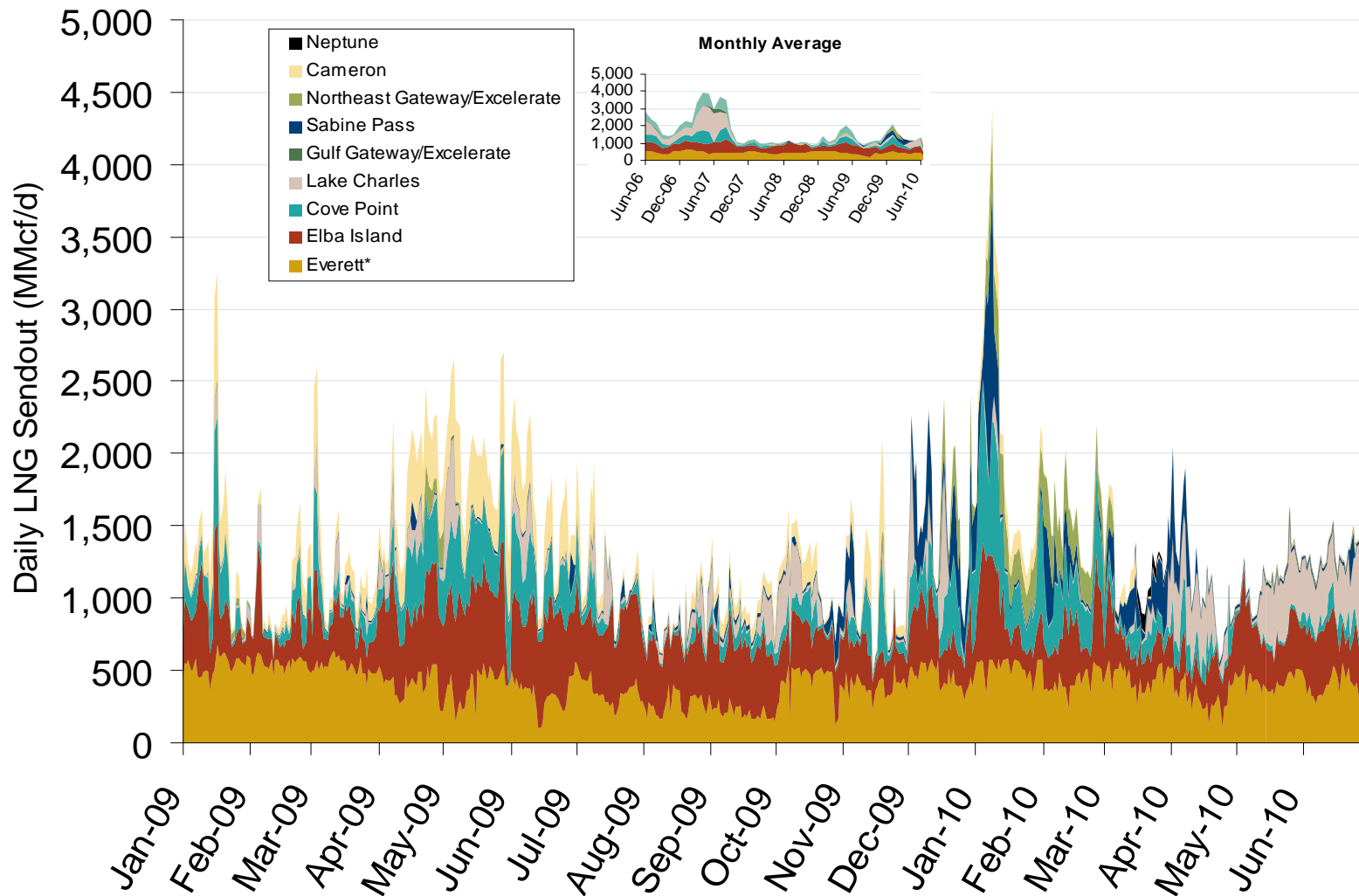
# Monthly Gas Imports at Existing U.S. LNG Facilities



Source: Derived from DOE Office of Fossil Energy data.

Updated July 9, 2010

## Daily Gas Sendout from Existing U.S. LNG Facilities



Source: Derived from *Bentek* data.

\* Everett data includes flows onto the AGT and TGP interstate lines, plus estimates of flows to the Mystic 7 power plant, Keyspan Boston Gas, and LNG trucked out of the terminal. Excludes Freeport LNG which flows via intrastate pipelines.

Updated July 9, 2010

## World LNG Estimated July 2010 Landed Prices

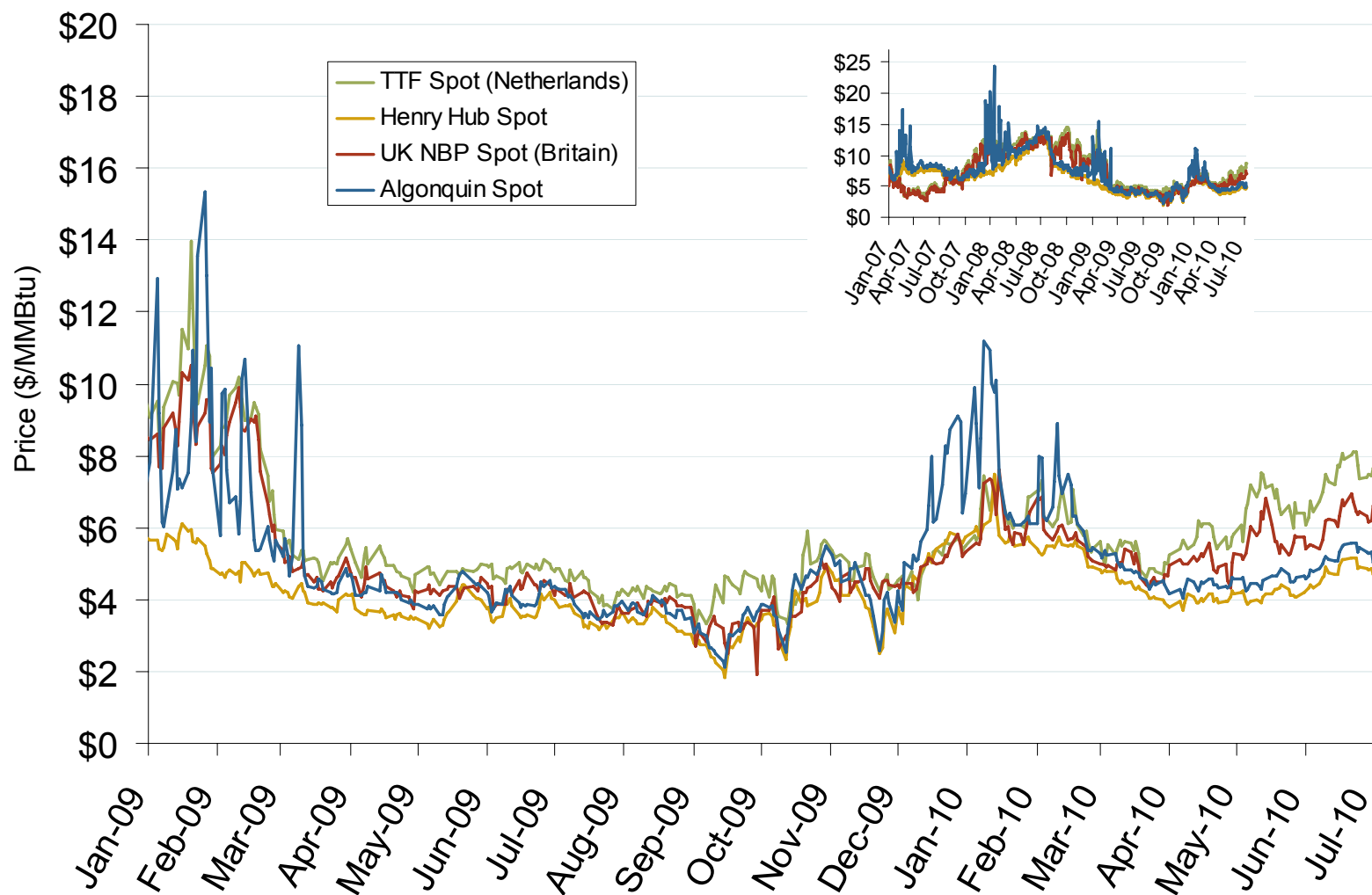


Source: *Waterborne Energy, Inc.* Data in \$US/MMBtu.

Updated July 9, 2010

3024

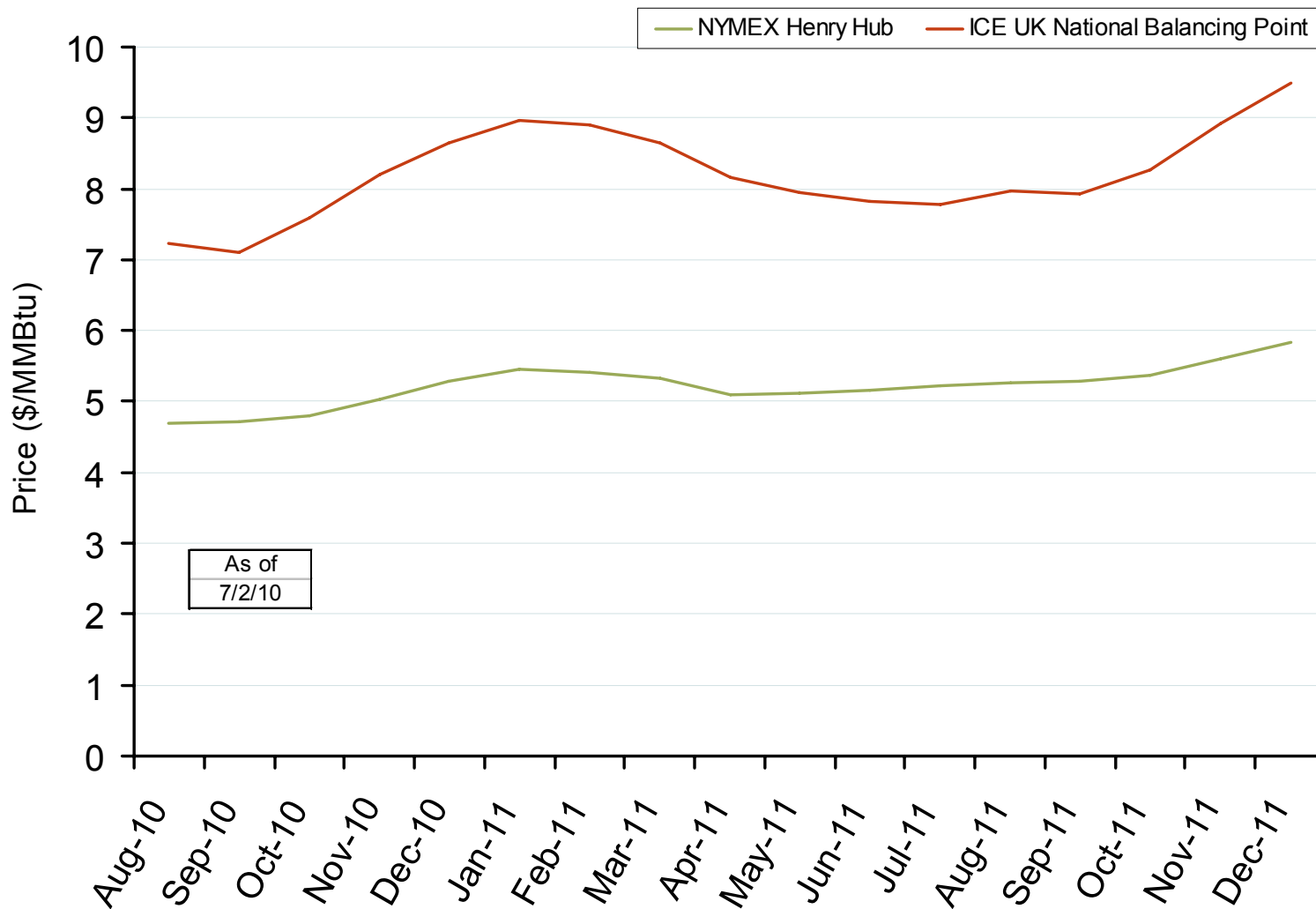
## Atlantic Basin European and US Spot Natural Gas Prices

Source: Derived from *Bloomberg* and *ICE* data.

Updated July 9, 2010

3008

## Henry Hub and UK National Balancing Point Natural Gas Forward Price Curves



Source: Derived from NYMEX and ICE data.

Updated July 9, 2010

3016