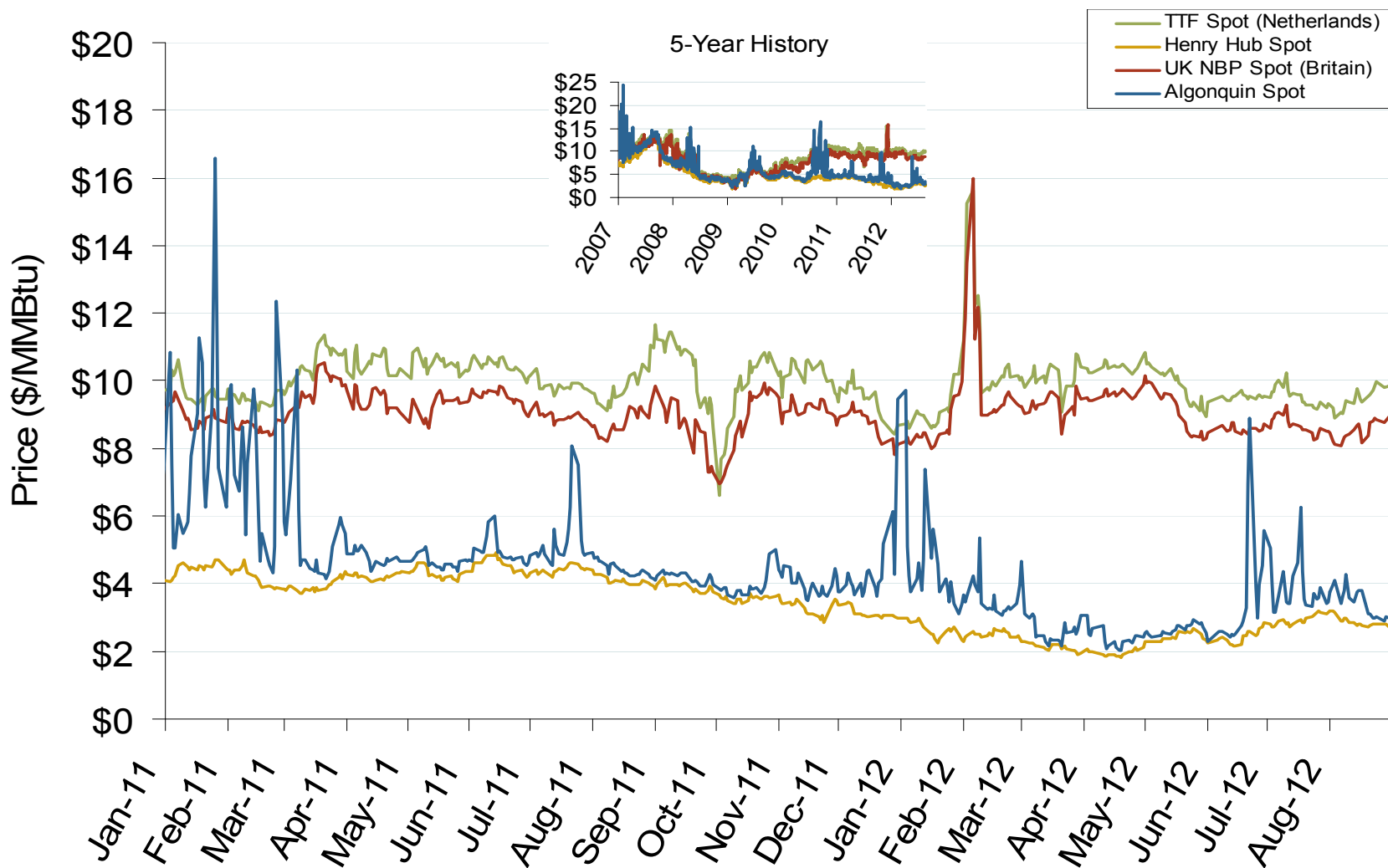


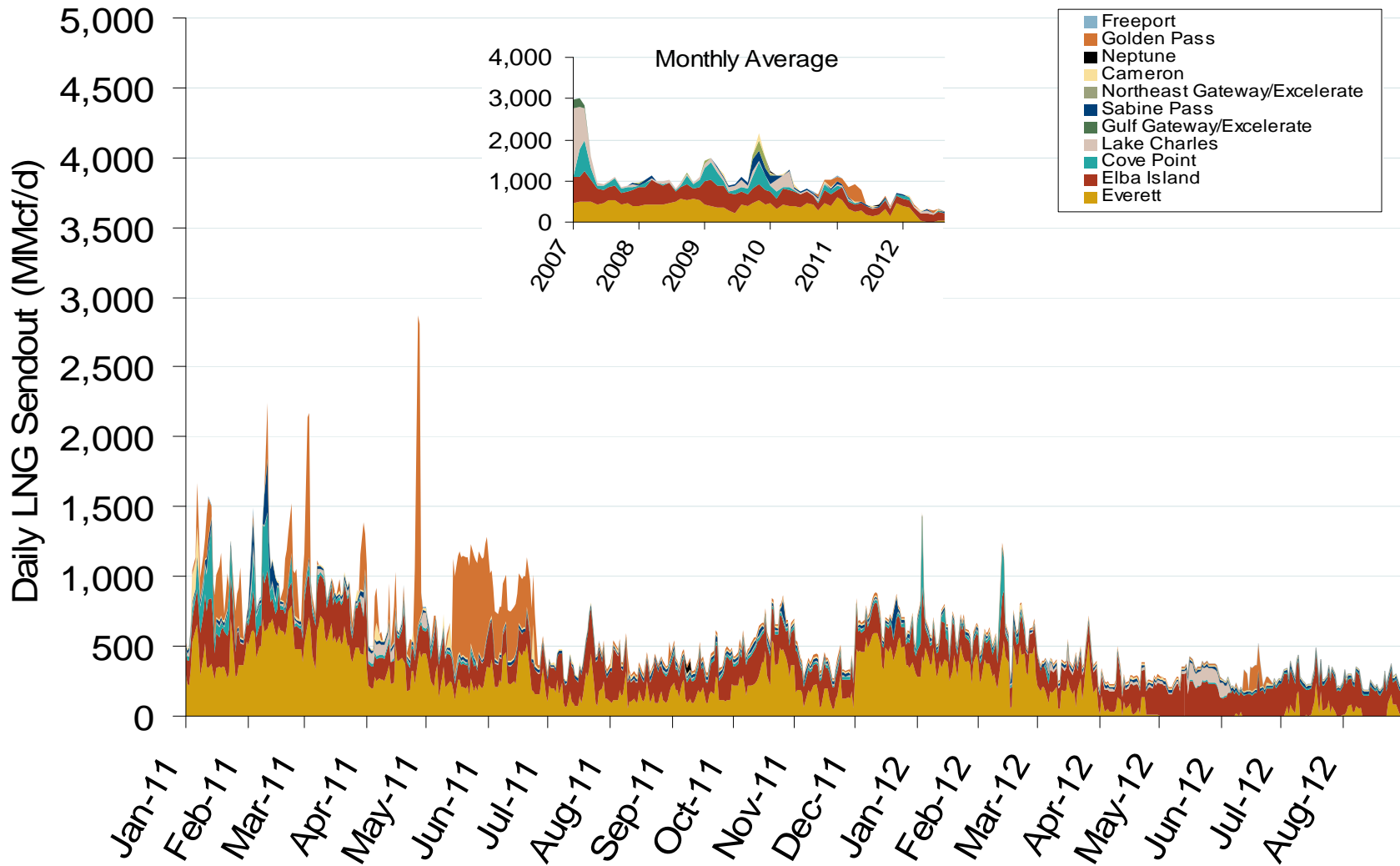
World LNG Estimated October 2012 Landed Prices



Atlantic Basin European and US Spot Natural Gas Prices



Daily Gas Sendout from Existing U.S. LNG Facilities



Notes: Everett data includes flows onto the AGT and TGP interstate lines, plus estimates of flows to the Mystic 7 power plant, Keyspan BostonGas, and LNG trucked out of the terminal. Excludes flows to the Freeport LNG which flows via intrastate pipelines and flows to the Mystic 8 and 9 power plants.

Source: Derived from *Bentek Energy* data

Updated: September 07, 2012

August 2012

Monthly Gas Imports at Existing U.S. LNG Facilities

