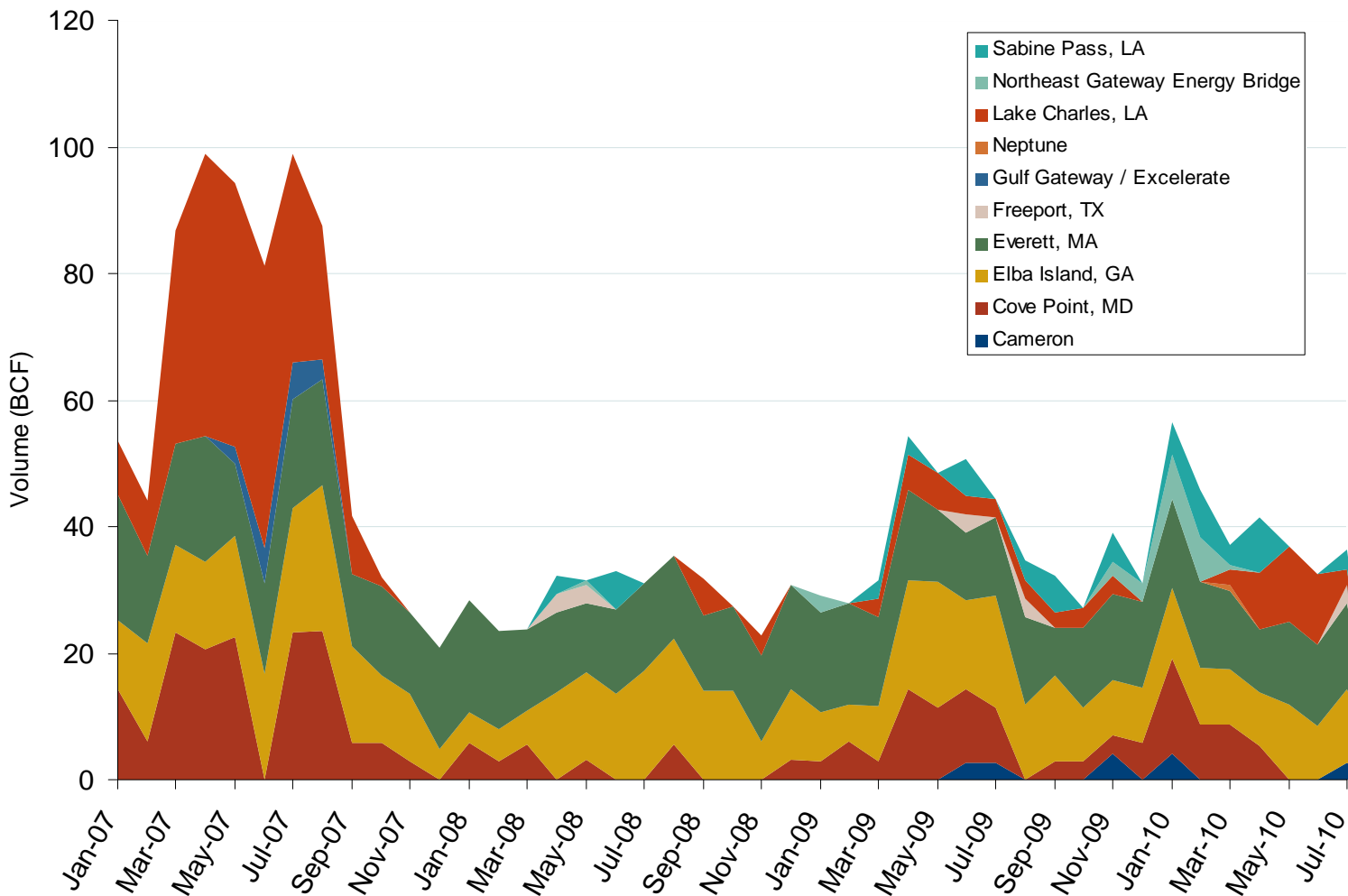


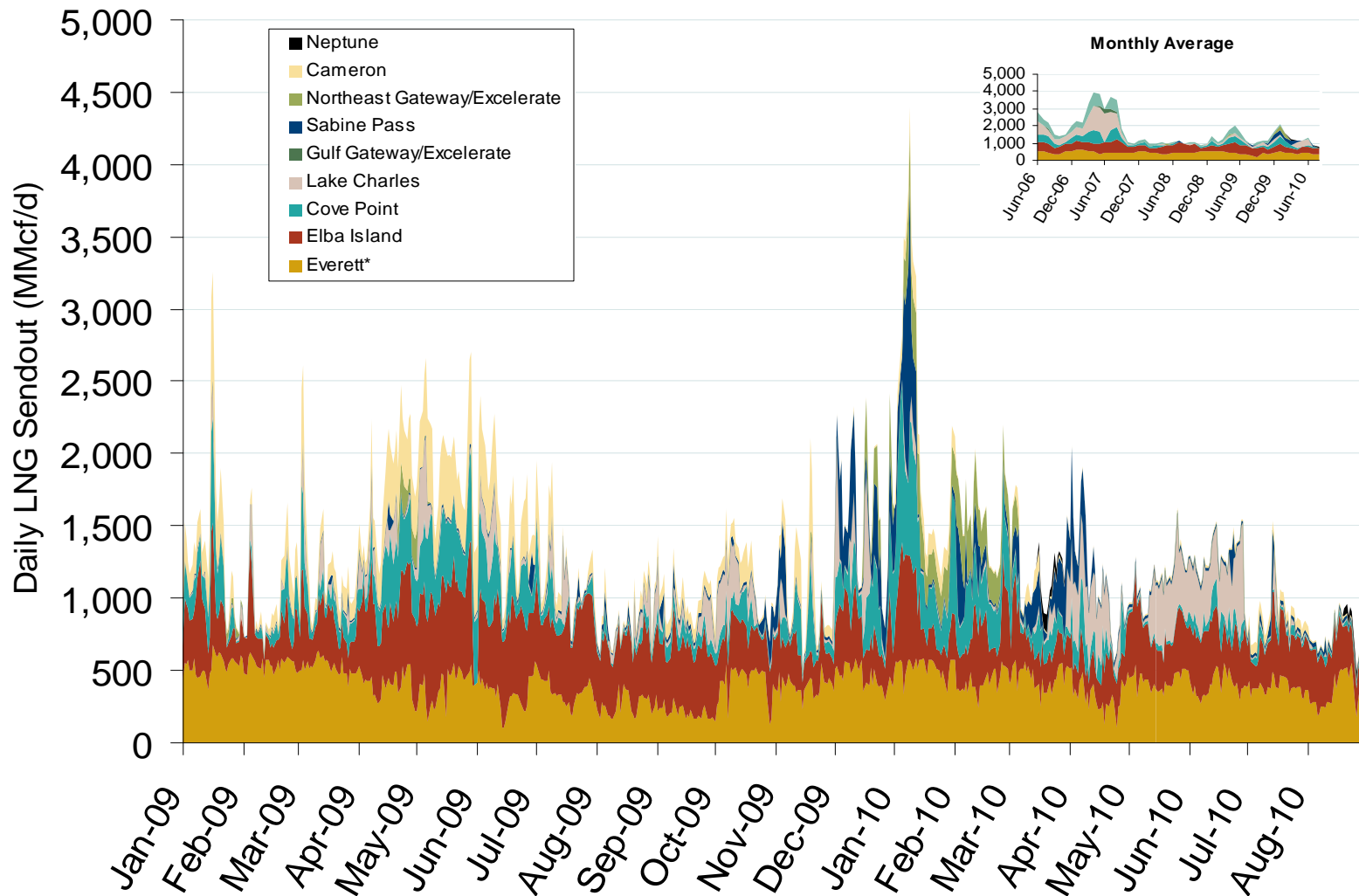
Monthly Gas Imports at Existing U.S. LNG Facilities



Source: Derived from DOE Office of Fossil Energy data.

Updated September 7, 2010

Daily Gas Sendout from Existing U.S. LNG Facilities



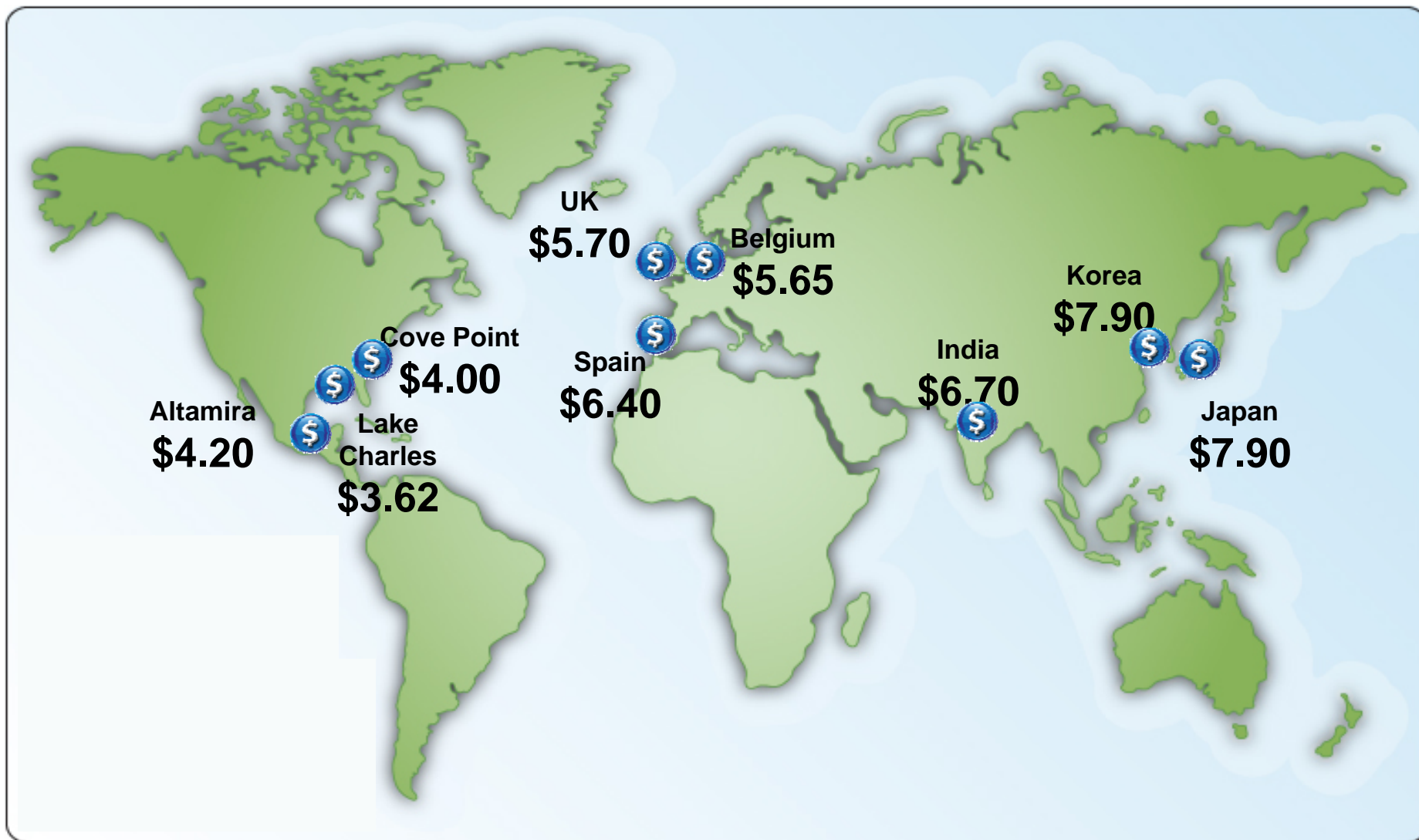
Source: Derived from *Bentek* data.

* Everett data includes flows onto the AGT and TGP interstate lines, plus estimates of flows to the Mystic 7 power plant, Keyspan Boston Gas, and LNG trucked out of the terminal. Excludes Freeport LNG which flows via intrastate pipelines.

Updated September 7, 2010

3007

World LNG Estimated September 2010 Landed Prices

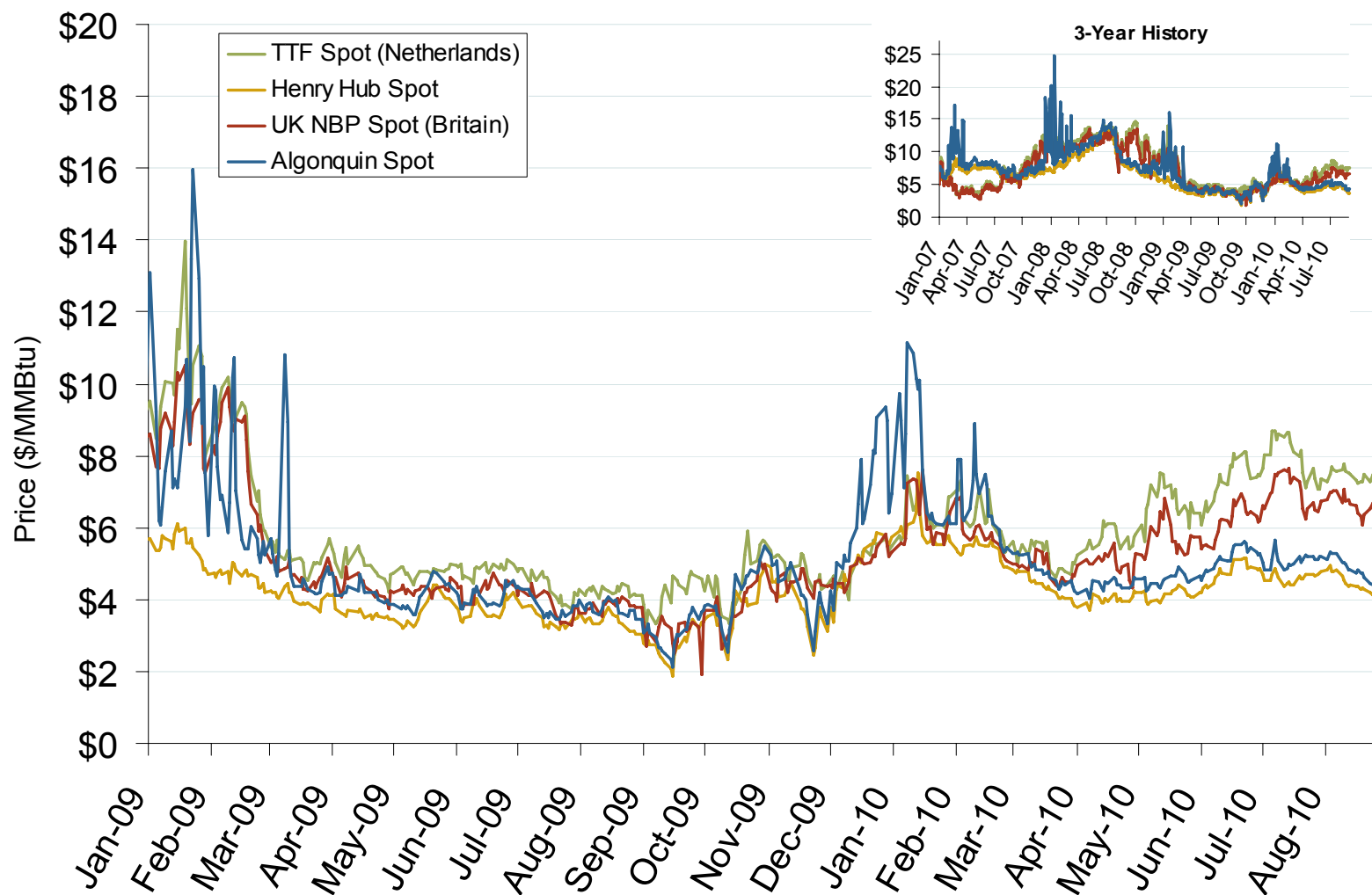


Source: *Waterborne Energy, Inc.* Data in \$US/MMBtu.

Updated September 7, 2010

3024

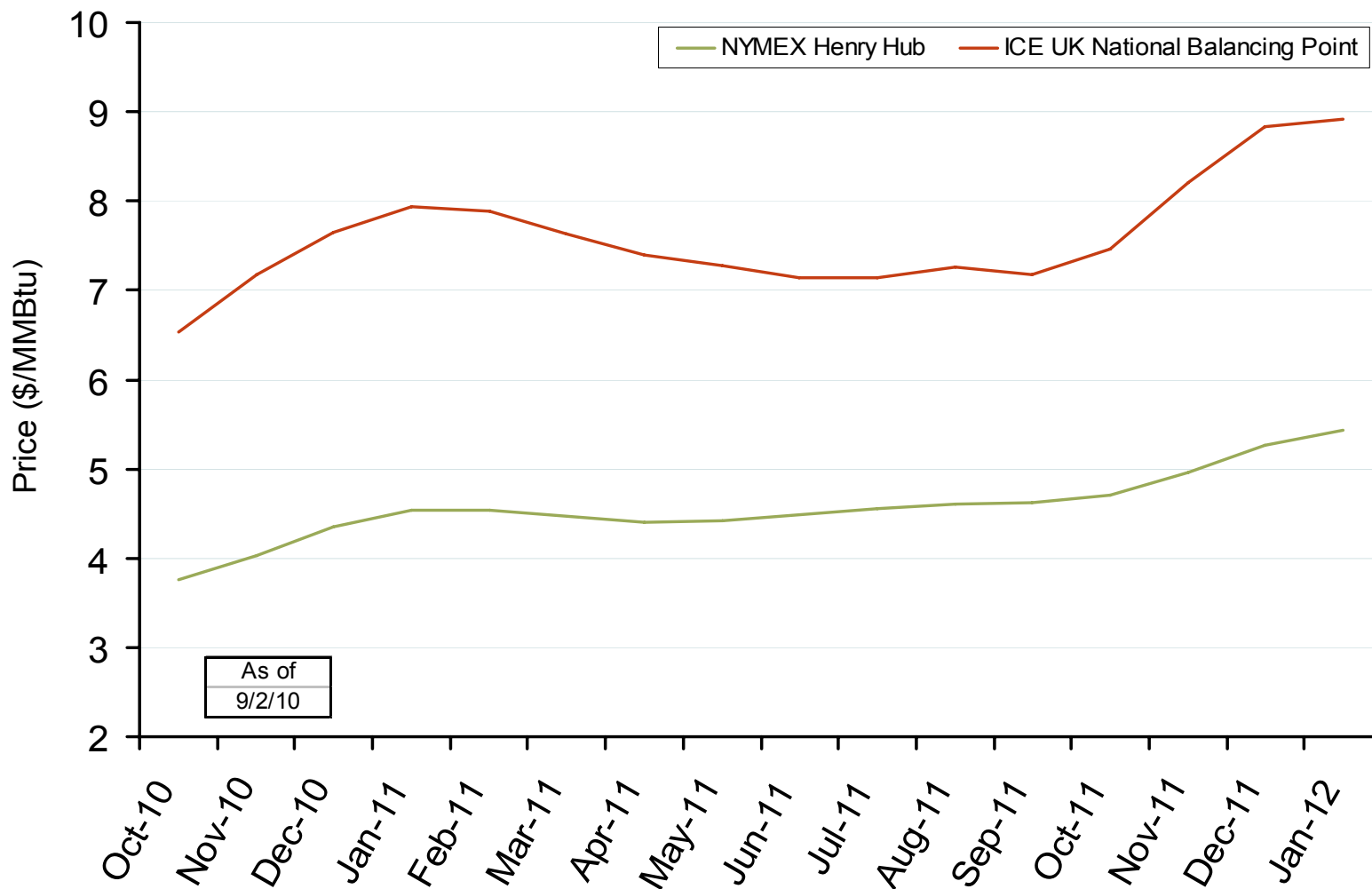
Atlantic Basin European and US Spot Natural Gas Prices

Source: Derived from *Bloomberg* and *ICE* data.

Updated September 7, 2010

3008

Henry Hub and UK National Balancing Point Natural Gas Forward Price Curves



Source: Derived from NYMEX and ICE data.

Updated September 7, 2010

3016