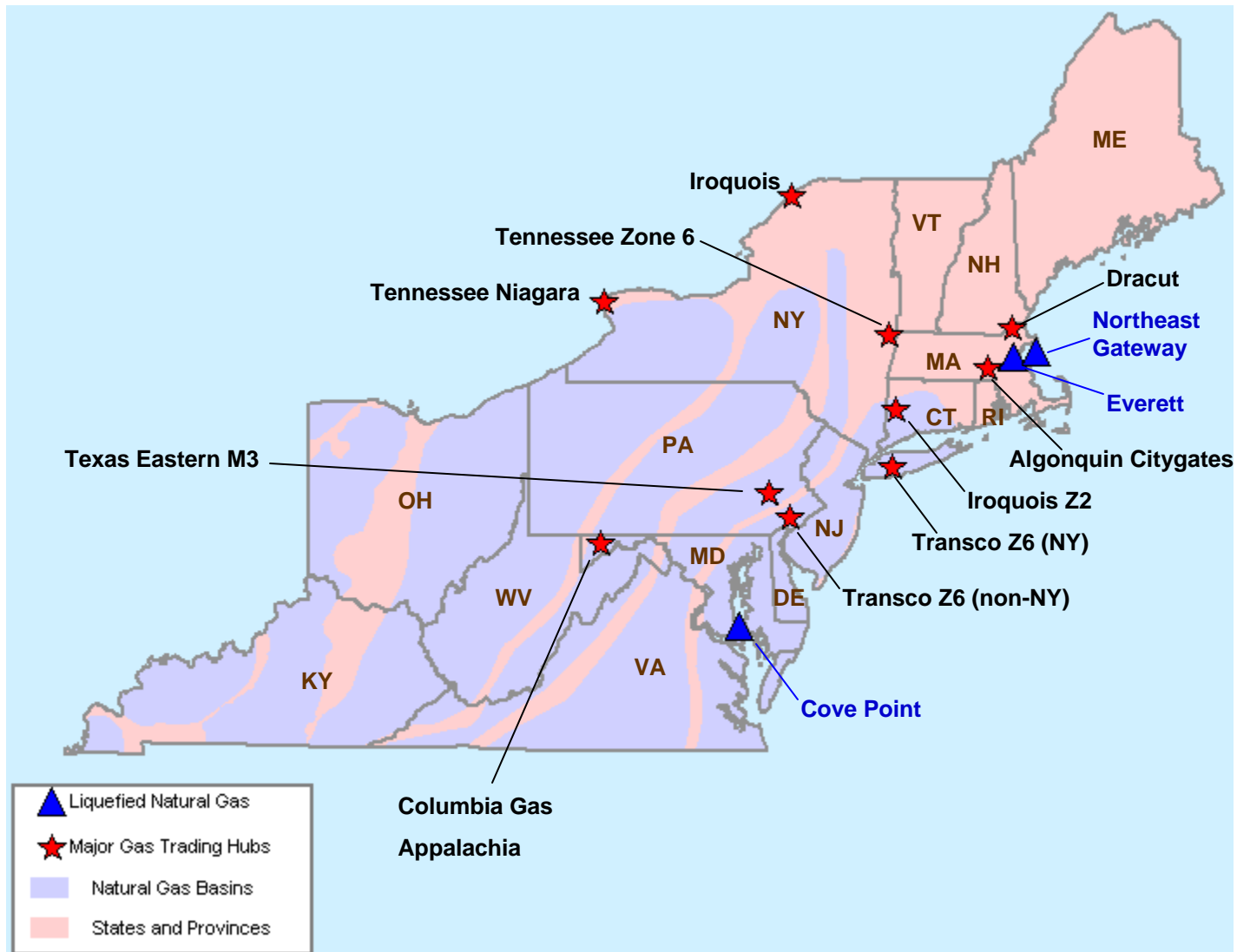


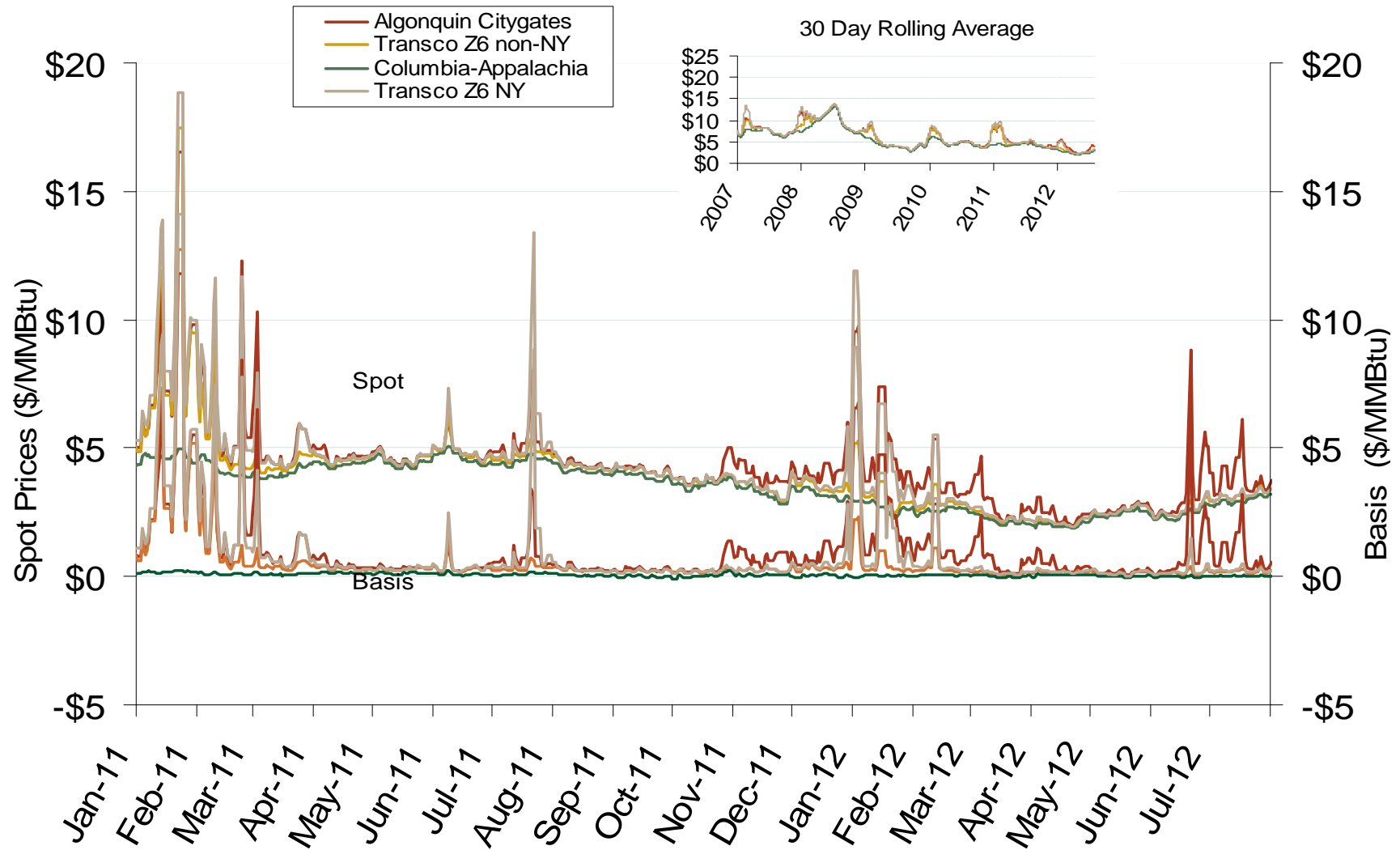
Northeast Natural Gas Region



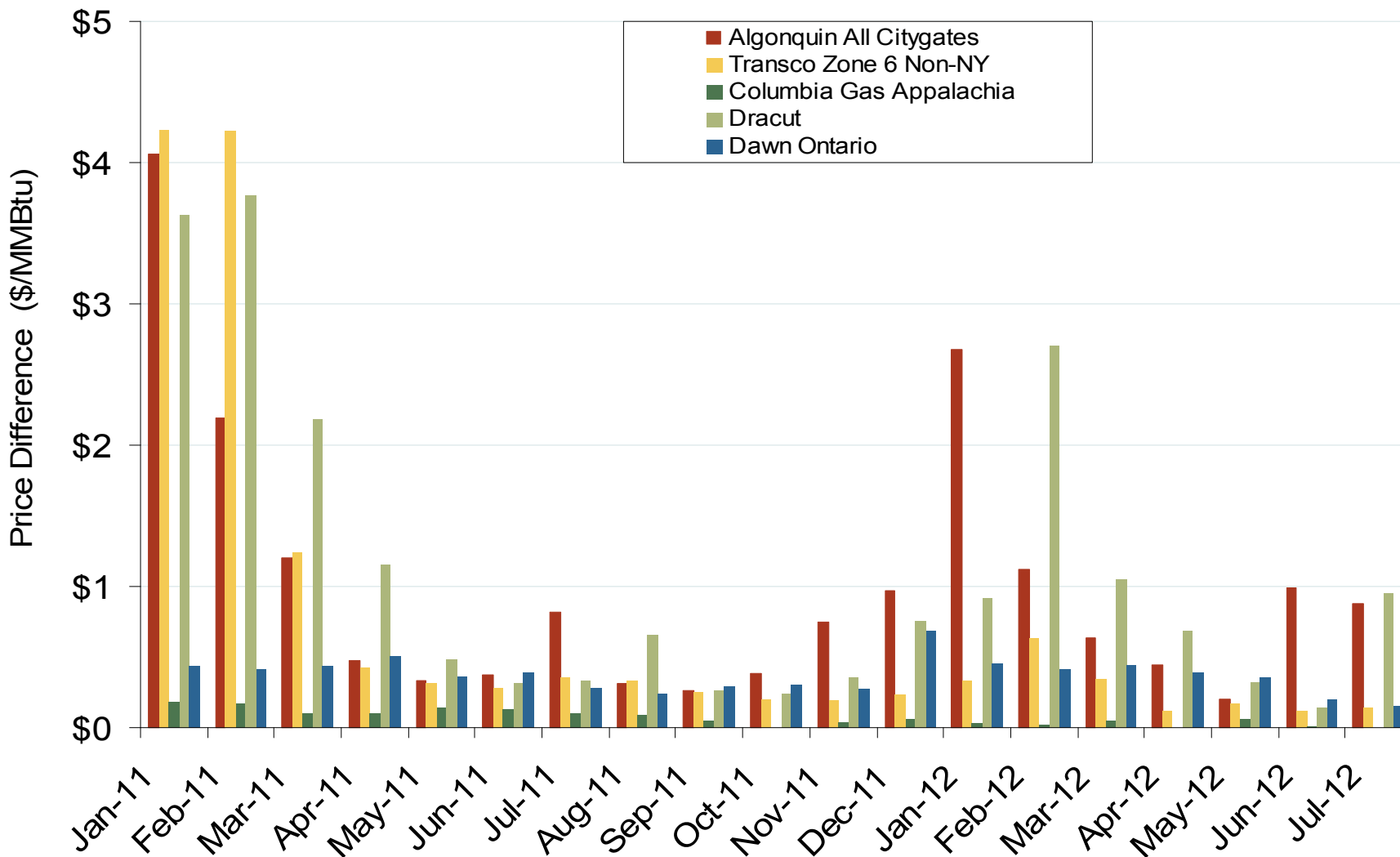
Northeast Annual Average Spot Hub Prices

Annual Average Day Ahead Prices (\$/MMBtu)						
	2007	2008	2009	2010	2011	5-Year Avg
Algonquin Citygates	\$8.17	\$10.06	\$4.80	\$5.29	\$4.99	\$6.66
Transco Z6 NY	\$8.46	\$10.13	\$4.89	\$5.41	\$4.98	\$6.77
Transco Z6 non-NY	\$7.77	\$9.85	\$4.64	\$5.25	\$4.68	\$6.44
Columbia-Appalachia	\$7.20	\$9.18	\$4.11	\$4.52	\$4.07	\$5.82

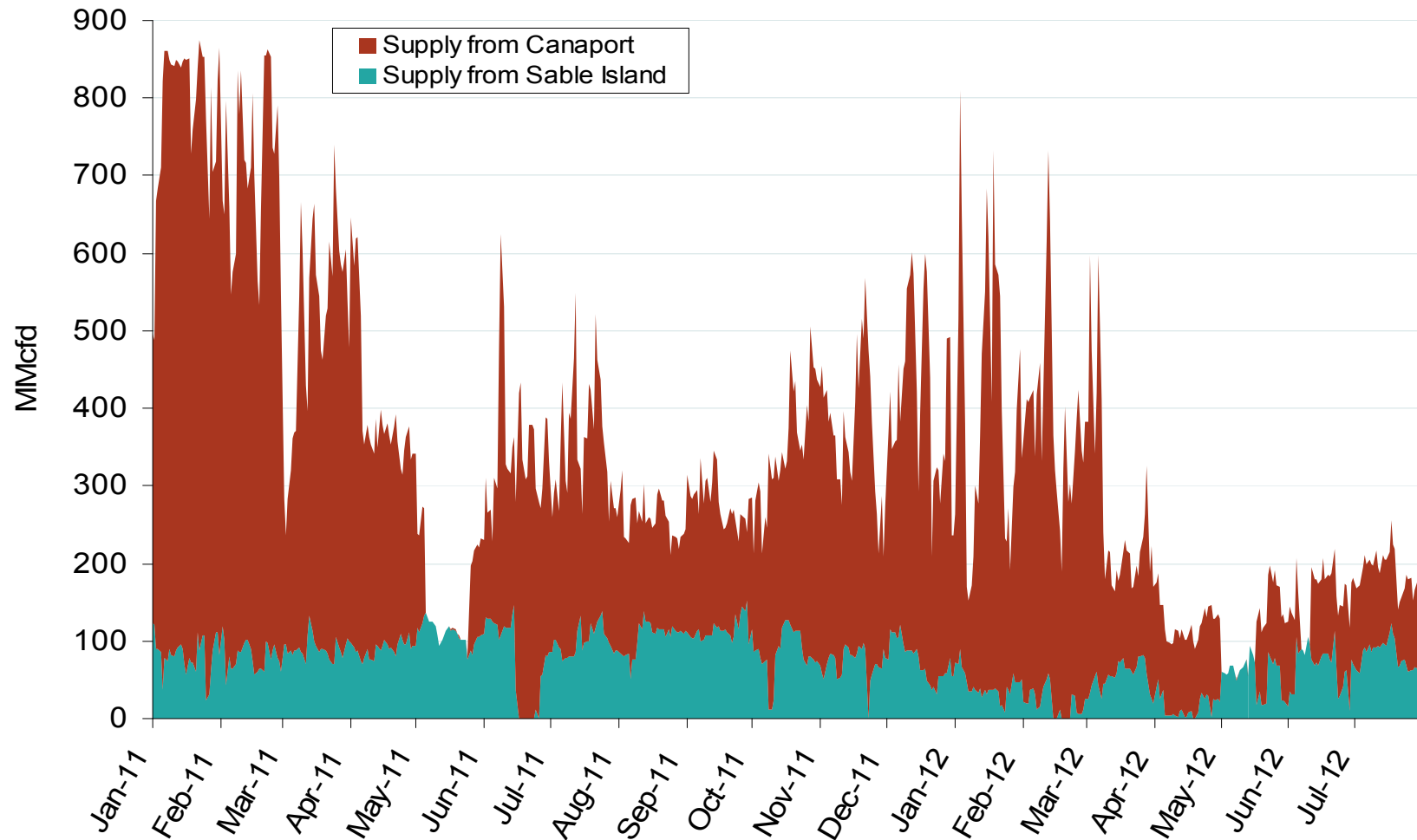
Northeastern Spot Prices and Basis



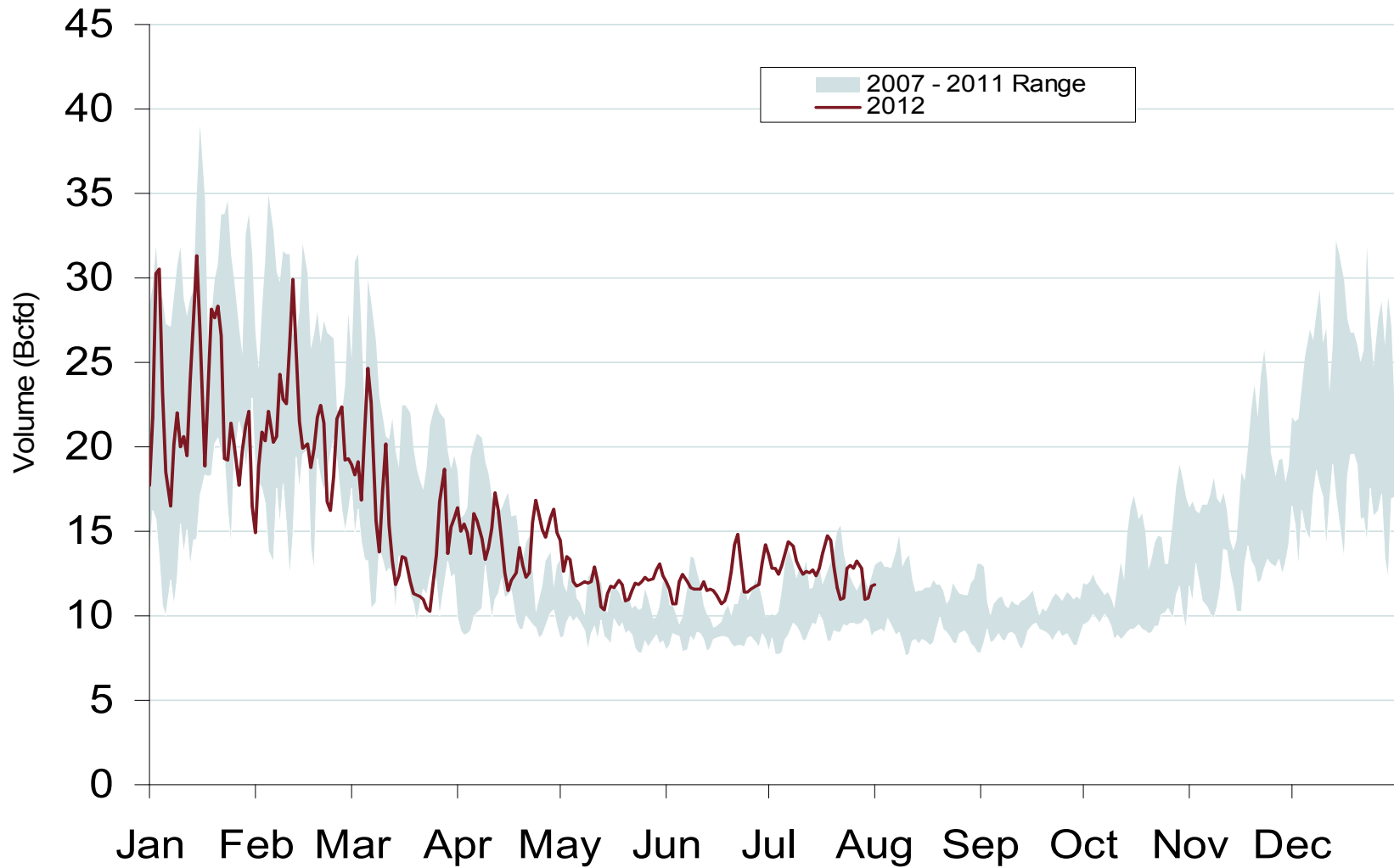
Northeastern Monthly Average Basis Value to Henry Hub



Maritimes Pipeline Flows



Daily Northeast Natural Gas Demand All Sectors



Northeast Natural Gas Consumption for Power Generation

