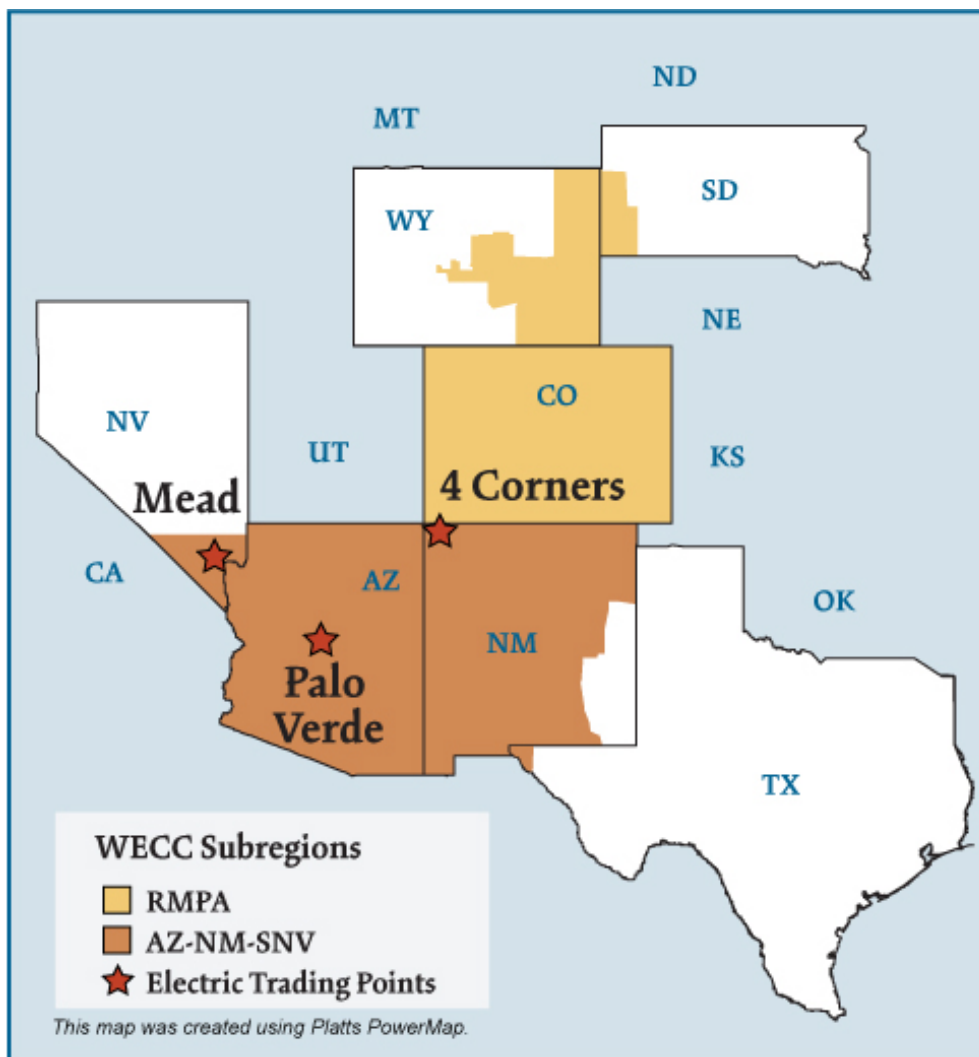


# Southwest Electric Regions



## Southwest Electric Market: Overview and Focal Points

---

Federal Energy Regulatory Commission • Market Oversight @ FERC.gov

### Overview

#### Geography

States covered: All or most of Arizona, New Mexico, Colorado and parts of Nevada, Wyoming and South Dakota.

Reliability region: Rocky Mountain Power Area (RMPA) and Arizona/New Mexico/Southern Nevada Power Area (AZNMSNV) sub-regions of the Western Electric Coordinating Council (WECC)

Balancing authorities: See list on page 5.

Hubs: Four Corners, Mead, Palo Verde

#### RTO/ISO

None

#### Generation/Supply

Marginal fuel type: Natural gas

Generating capacity: 45,459 MW (2005)

Capacity reserve: 8,940 MW (2005)

Reserve margin: 24% (2005)

The region has a surplus of generating capacity, with much of the generation in Arizona and the Four Corners area. Transmission capacity to the California market is often fully utilized in the high load periods of the summer. In 2005, the regional reserve margin decreased from 2004 as demand growth outpaced supply additions.

*Updated May 5, 2007*

1063

## Southwest Electric Market: Overview and Focal Points

---

Federal Energy Regulatory Commission • Market Oversight @ FERC.gov

### Demand

Peak demand: 36,519 MW (2005)

Peak demand growth: 3.5% (2004–2005)

### Prices

Annual Average of Daily Bilateral Day Ahead On-Peak Prices

Platts "Palo Verde" Index

2004: \$50.09/MWh

2005: \$67.39/MWh

2006: \$57.59/MWh

2007: \$61.74/MWh

### Interconnections/Seams

Generation suppliers export excess power to the rest of the West and particularly to California.

## Balancing Authorities in the Southwest Electric Market

### WECC Subregion and Balancing Authority

### NERC Acronym

#### **AZNMSNV**

Arizona Public Service Company  
 DECA, LLC - Arlington Valley  
 El Paso Electric Company  
 Gila River Maricopa Arizona  
 Harquahala L.L.C.  
 Imperial Irrigation District  
 Nevada Power Company  
 Public Service Company of New Mexico  
 Salt River Project  
 Tucson Electric Power Company  
 Western Area Power Administration - Lower Colorado

AZPS  
 DEAA  
 EPE  
 GRMA  
 HGMA  
 IID  
 NEVP  
 PNM  
 SRP  
 TEPC  
 WALC

#### **RMPA**

Public Service Company of Colorado  
 Western Area Power Administration - Colorado-Missouri

PSCO  
 WACM

## Supply and Demand Statistics for the Southwest

<b>Supply Demand Statistics</b>			
	2003	2004	2005
Summer Generating Capacity MW	41,646	45,588	45,459
Summer Peak Demand MW	35,815	35,280	36,519
Summer Reserves MW	5,831	10,308	8,940
Summer Reserve Margin:	16%	29%	24%
Annual Load (GWh):	177,401	180,154	185,730
Annual Net Generation GWh	NA	NA	NA

Source: Derived from WECC data.

Updated February 2, 2007

1064

## Annual Average Bilateral Prices

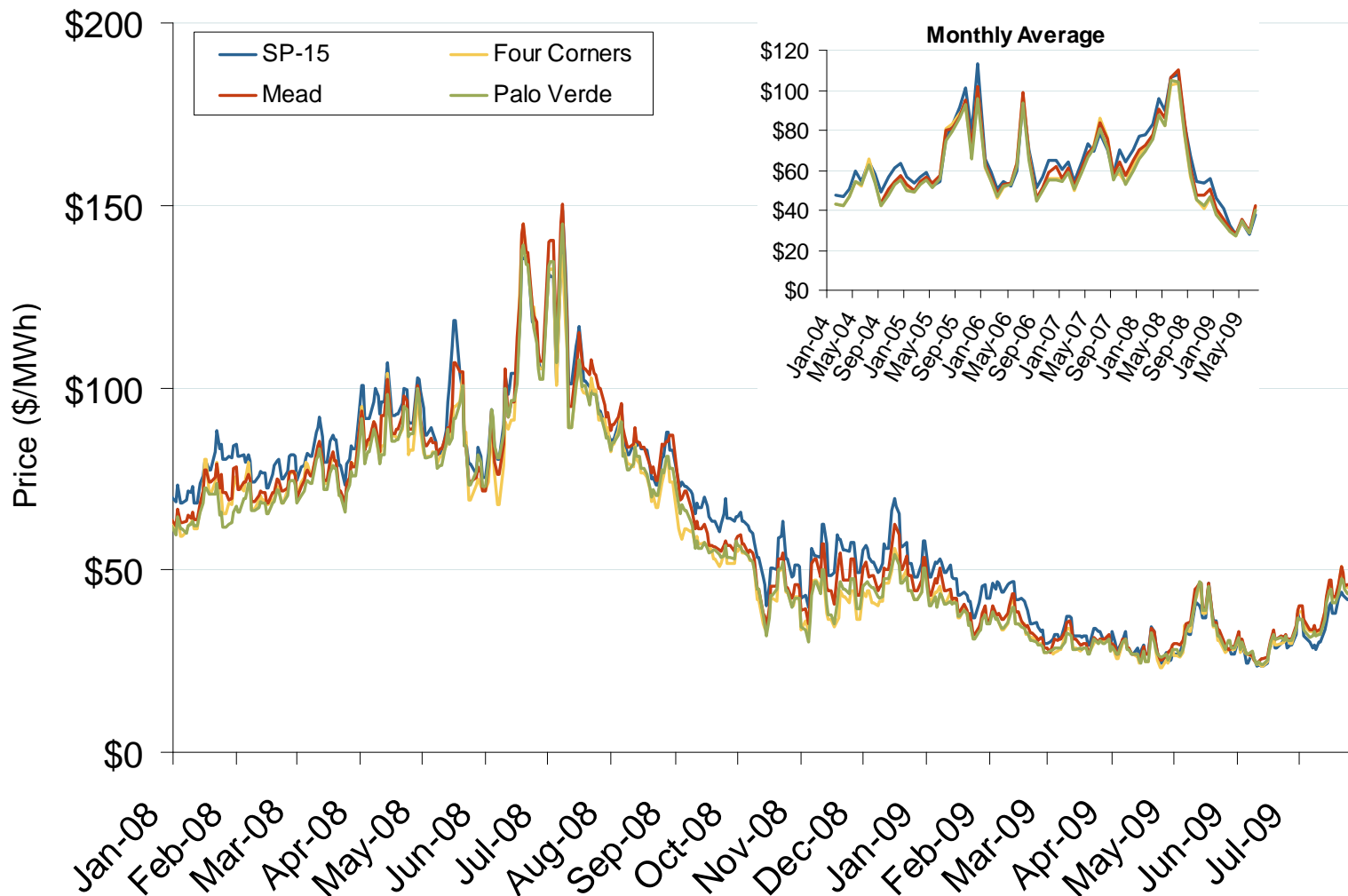
Annual Average Day Ahead On Peak Prices (\$/MWh)						
	2004	2005	2006	2007	2008	5-Year Avg
Four Corners	\$50.48	\$69.39	\$58.52	\$63.21	\$71.84	\$62.69
Palo Verde	\$50.06	\$67.39	\$57.59	\$61.74	\$71.87	\$61.73
Mead	\$52.34	\$70.17	\$59.93	\$64.49	\$75.63	\$64.72

Source: Derived from *Platts* data.

Updated February 6, 2009

1065

# Southwestern Daily Bilateral Day-Ahead On-Peak Prices

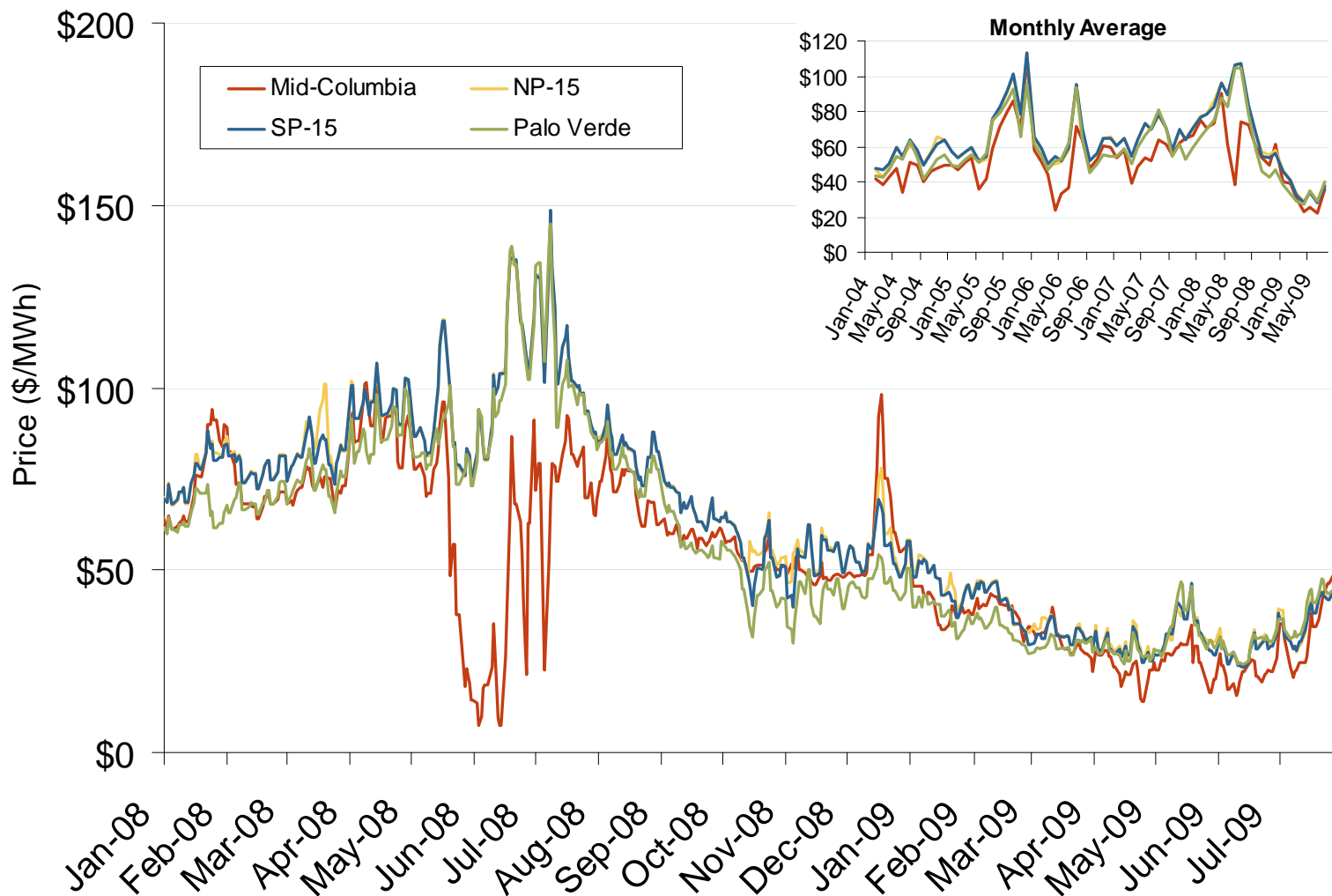


Source: Derived from *Platts* data.

Updated August 7, 2009

1066

# Western Daily Bilateral Day-Ahead On-Peak Prices



Source: Derived from Platts data.

Updated August 7, 2009

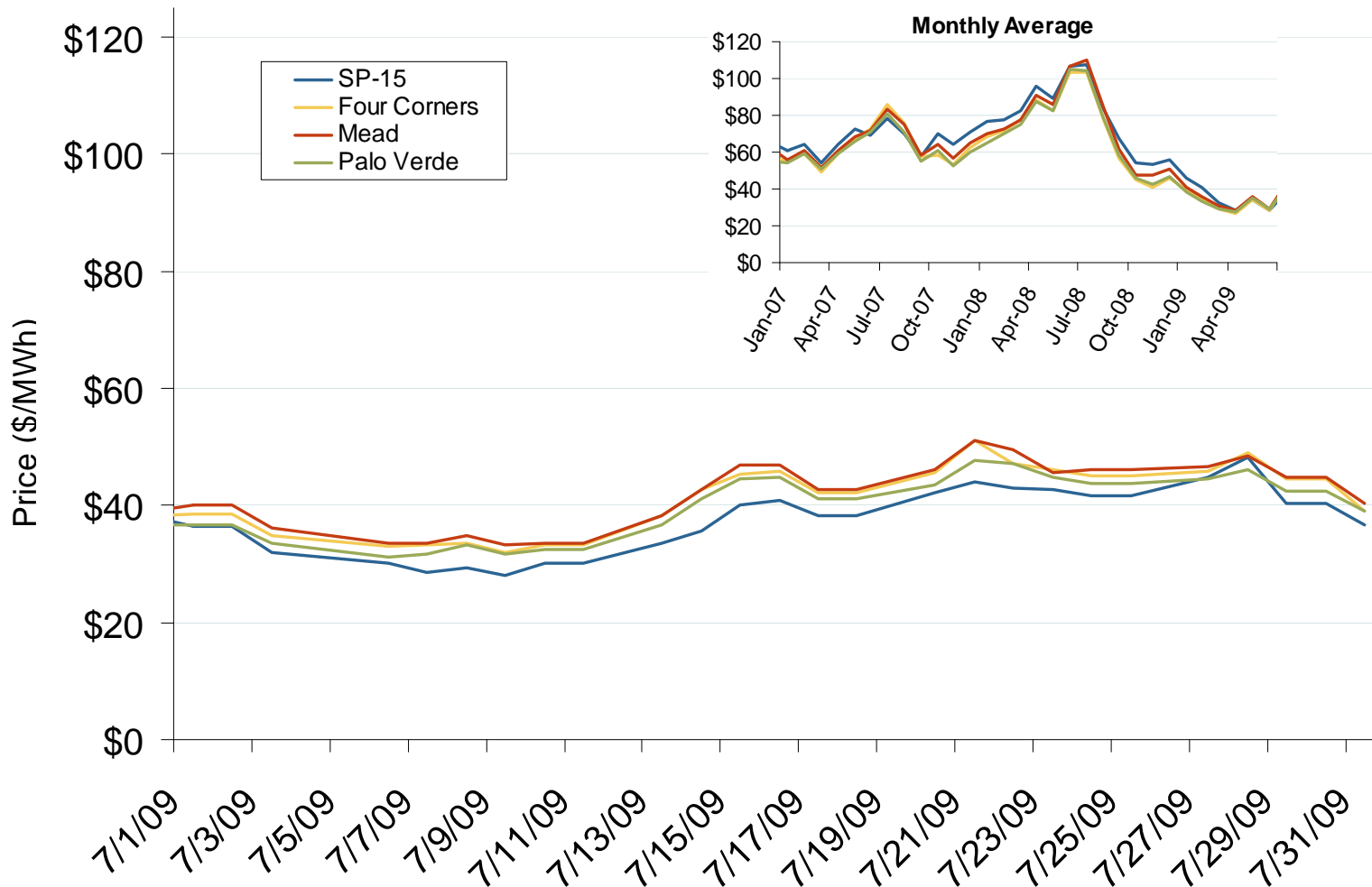
1067



Southwest Electric Market: Last Month's Southwestern Bilateral Prices

Federal Energy Regulatory Commission • Market Oversight @ FERC.gov

# Southwestern Daily Bilateral Day-Ahead On-Peak Prices

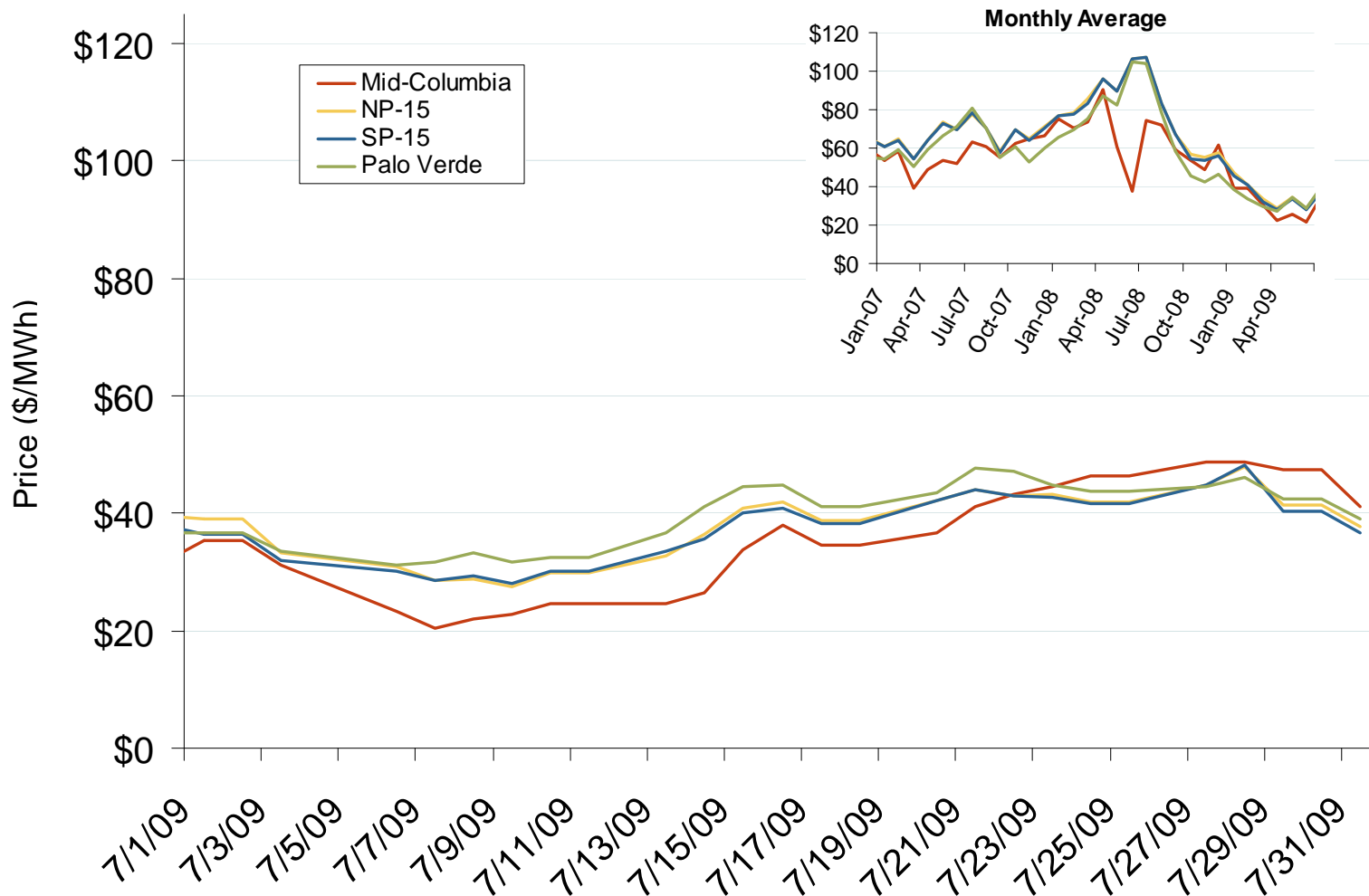


Source: Derived from Platts data.

Updated August 7, 2009

14520

# Western Daily Bilateral Day-Ahead On-Peak Prices

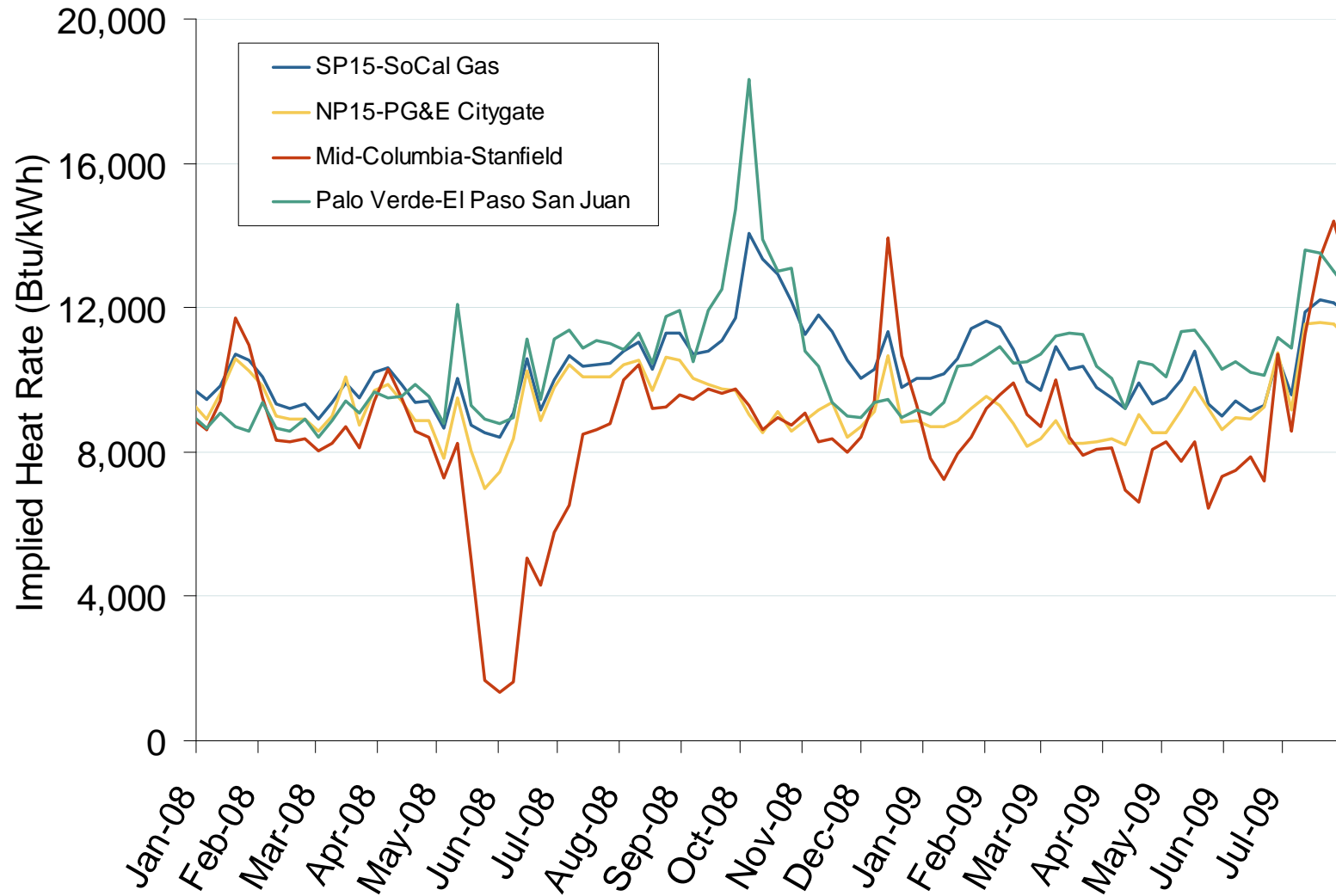


Source: Derived from *Platts* data.

Updated August 7, 2009

14521

## Implied Heat Rates at Western Trading Points Weekly Average

Source: Derived from *Platts* data

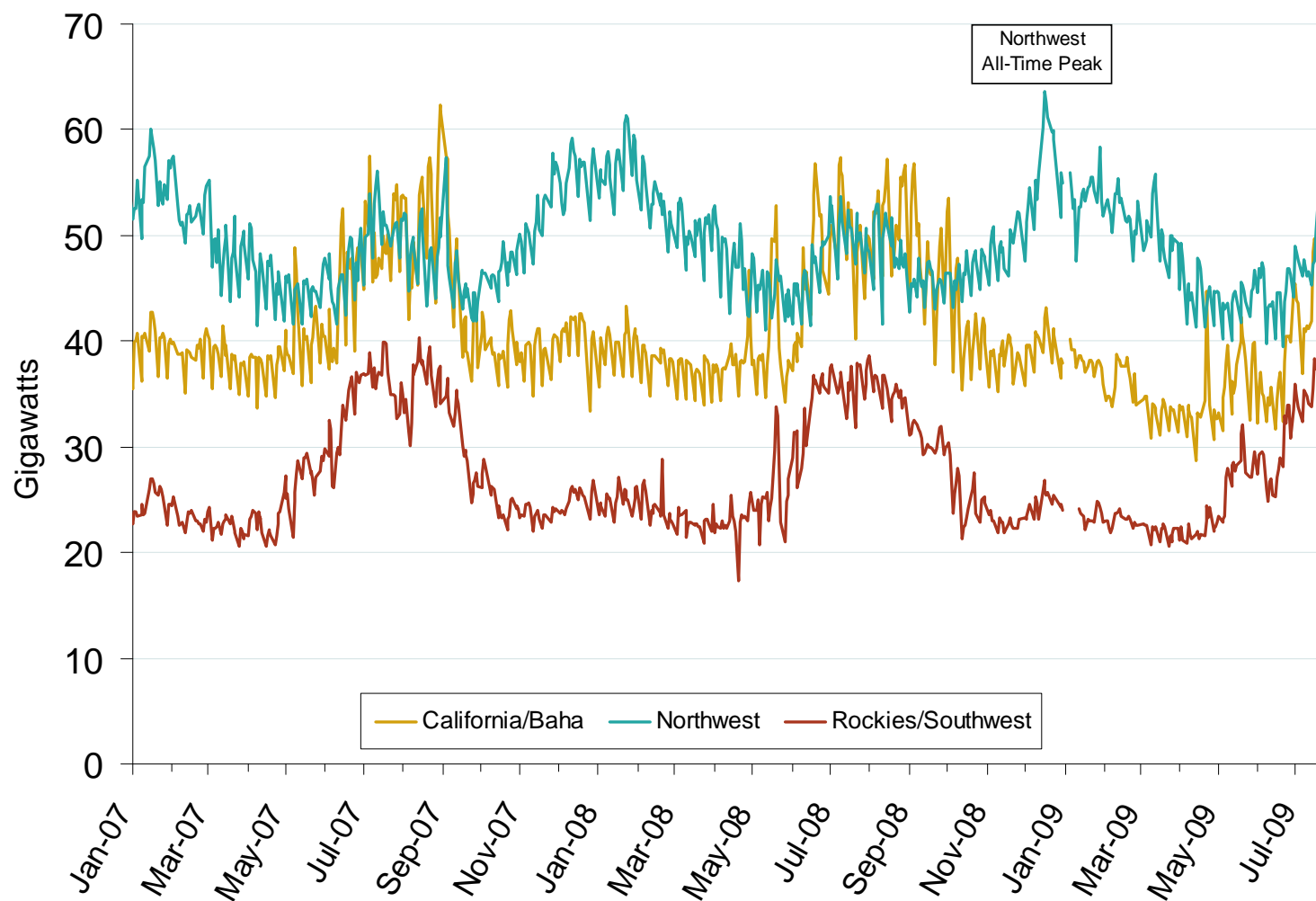
Updated August 7, 2009

1141

## Southwest Electric Market: Daily Peak Demand

Federal Energy Regulatory Commission • Market Oversight @ FERC.gov

## Western Daily Actual Peak Demand

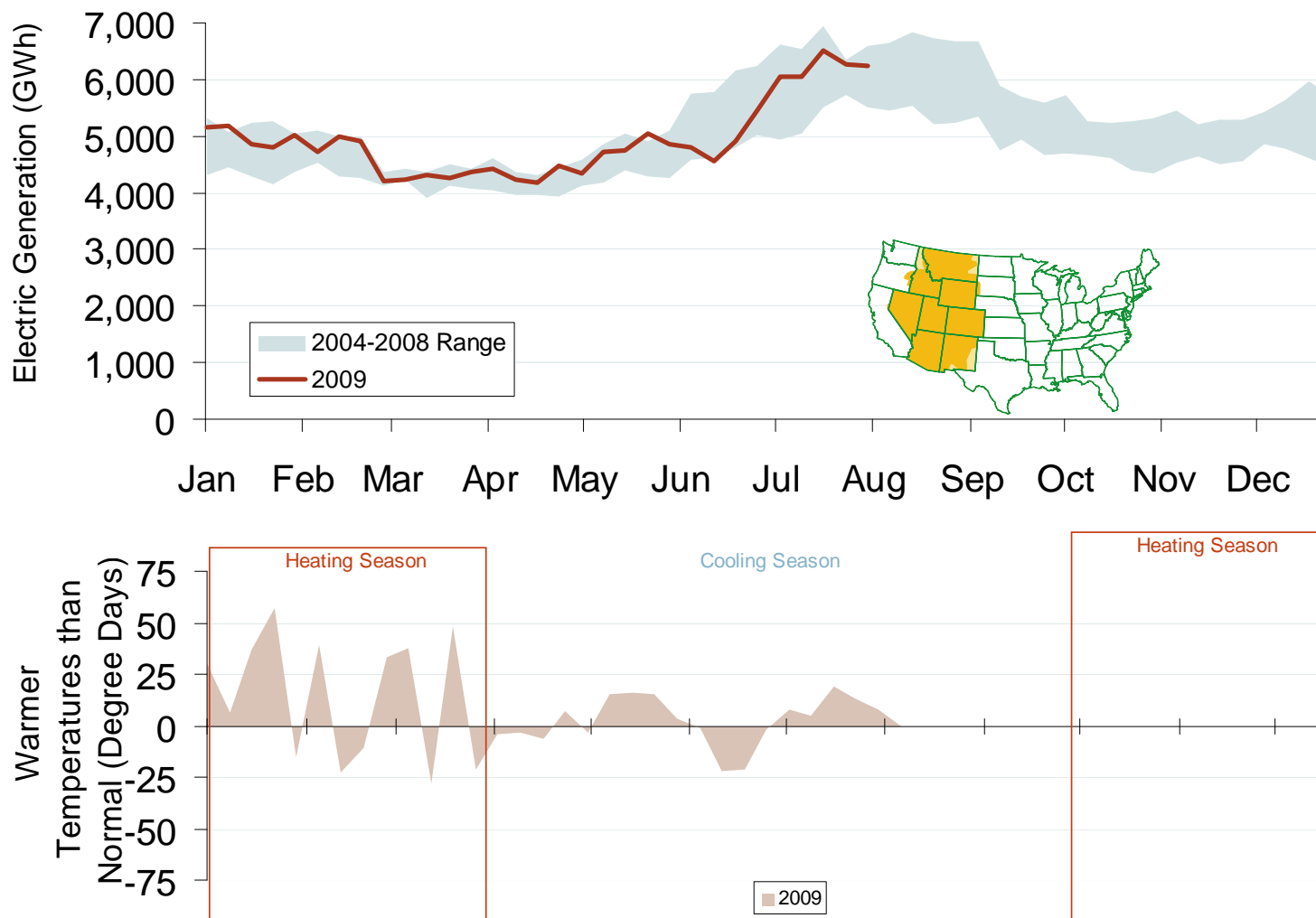


Source: Derived from WECC Daily Report data available at <http://wecc.biz>. Data does not include weekends and holidays. Some data for 12/31/2008 – 1/9/2009 are not available from WECC.

Updated August 7, 2009

1193

# Weekly Electric Generation Output and Temperatures Rocky Mountains Region



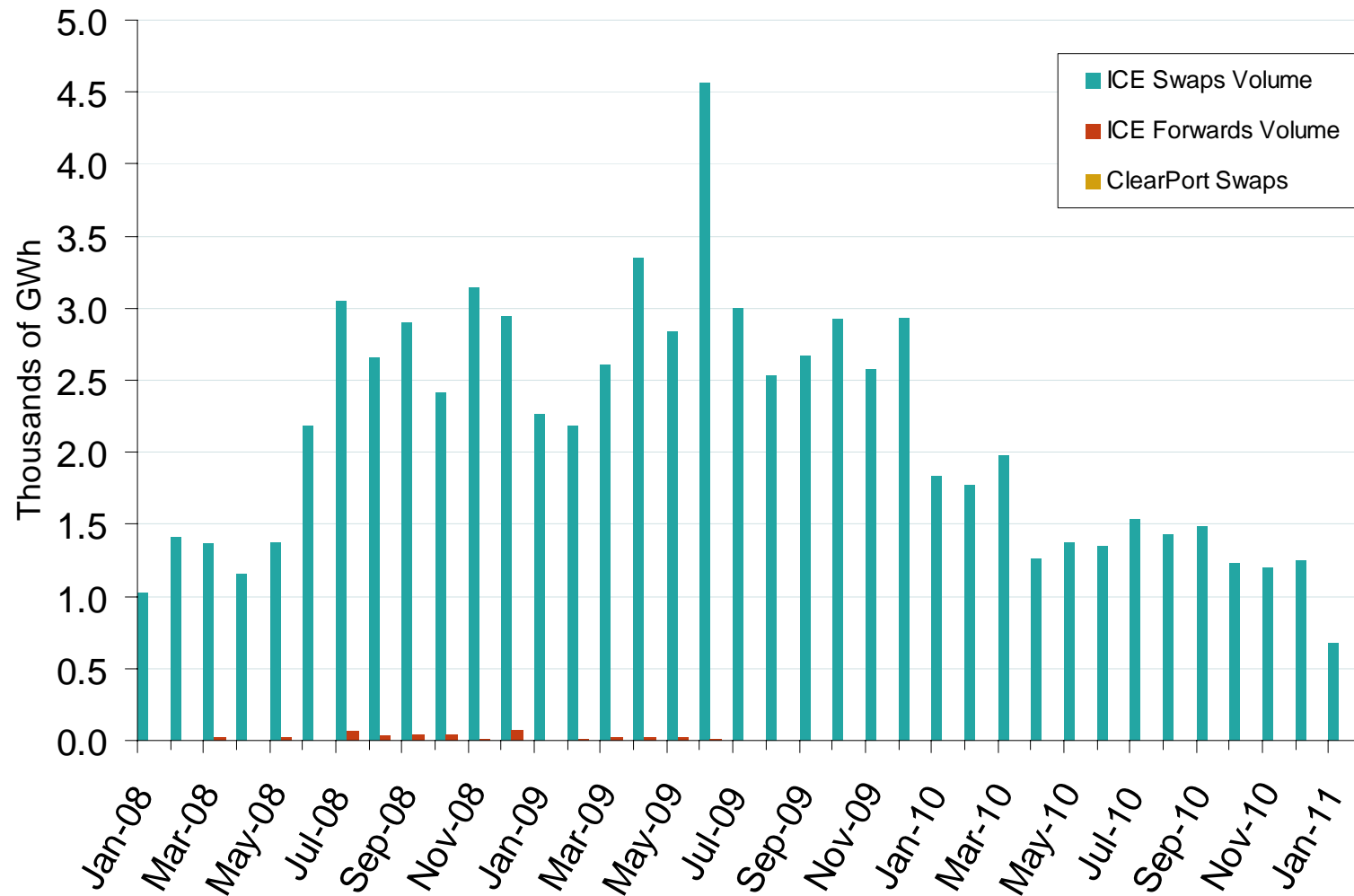
Source: Derived from EEI and NOAA data.

Updated August 7, 2009

## Southwest Electric Markets: Physical &amp; Financial Market Volumes

Federal Energy Regulatory Commission • Market Oversight @ FERC.gov

## Palo Verde Forward and Swap Volumes



Source: Derived from ICE and Nymex ClearPort data. ICE on-peak forward (physical) and swap (financial) volumes are for Palo Verde and include monthly, dual monthly, quarterly, and calendar year contracts traded for each month. Nymex ClearPort on-peak swap (financial) volumes are for Palo Verde and are traded by month.

Updated August 7, 2009

1068