

**Financial Activity of House Freshmen  
Through June 30 of the Non-Election Year**

<b>Total Receipts</b>					<b>Median Receipts</b>		
<b>Democrats</b>		<b>Republicans</b>					
Number	Receipts	Number	Receipts	Democrat	Republican		
1993	67	\$4.7	49	\$3.3	1993	\$69,783	\$69,369
1995	17	\$1.2	78	\$10.4	1995	\$72,971	\$123,104
1997	42	\$5.0	32	\$4.8	1997	\$115,228	\$146,833
1999	23	\$6.2	17	\$4.7	1999	\$253,812	\$256,609
2001	13	\$3.2	28	\$7.7	2001	\$275,433	\$232,592
2003	20	\$4.6	34	\$10.5	2003	\$206,607	\$268,265
2005	17	\$5.8	24	\$9.9	2005	\$251,888	\$395,712
2007	41	\$21.0	16	\$5.0	2007	\$499,360	\$218,760
2009	39	\$18.7	26	\$9.0	2009	\$505,721	\$372,125
2011	9	\$2.2	84	\$35.0	2011	\$204,063	\$349,872

(millions of dollars)

**Total Contributions from Individuals**

	Democrat	Republican
1993	\$1.6	\$2.2
1995	\$0.5	\$5.4
1997	\$2.2	\$2.5
1999	\$3.3	\$2.2
2001	\$1.4	\$3.9
2003	\$2.0	\$5.2
2005	\$2.9	\$4.8
2007	\$11.2	\$2.6
2009	\$8.6	\$5.2
2011	\$1.2	\$19.6

**Median Contributions from Individuals**

	Democrat	Republican
1993	\$15,550	\$36,128
1995	\$29,676	\$62,405
1997	\$45,901	\$68,945
1999	\$127,050	\$121,763
2001	\$126,211	\$125,268
2003	\$79,416	\$129,941
2005	\$121,446	\$177,682
2007	\$195,664	\$119,382
2009	\$213,670	\$179,324
2011	\$101,590	\$195,570

**Total Contributions from PACs and Other Committees**

	Democrat	Republican
1993	\$2.7	\$1.0
1995	\$0.5	\$4.4
1997	\$2.5	\$2.1
1999	\$2.7	\$2.0
2001	\$1.6	\$3.7
2003	\$2.3	\$4.9
2005	\$2.7	\$4.9
2007	\$9.4	\$2.0
2009	\$9.6	\$3.6
2011	\$1.0	\$13.6

**Median Contributions from PACs and Other Committees**

	Democrat	Republican
1993	\$41,350	\$21,250
1995	\$35,500	\$55,550
1997	\$59,000	\$59,083
1999	\$115,850	\$113,908
2001	\$135,500	\$112,289
2003	\$110,732	\$133,579
2005	\$125,250	\$163,828
2007	\$248,632	\$106,620
2009	\$282,676	\$145,859
2011	\$110,250	\$139,775

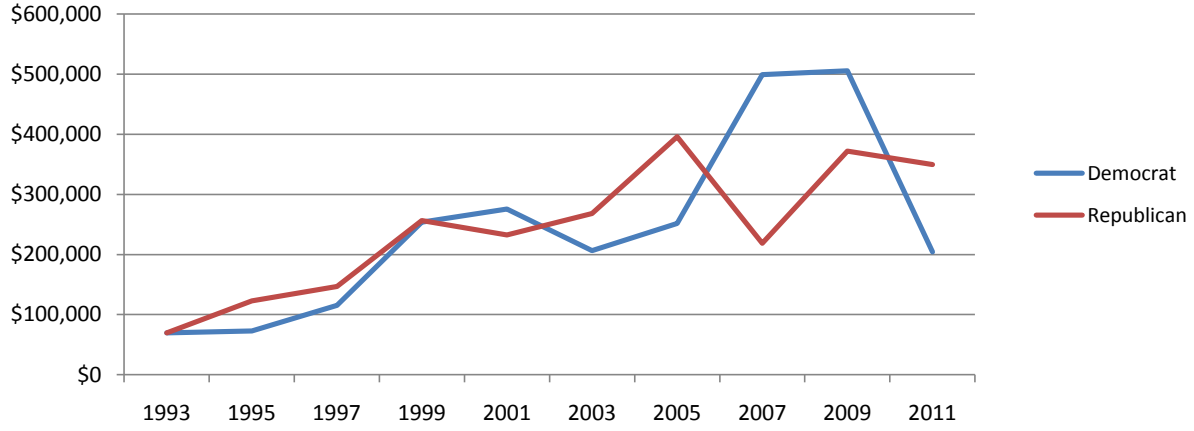
**Total Cash on Hand**

	Democrat	Republican
1993	\$1.7	\$1.4
1995	\$1.1	\$5.9
1997	\$3.1	\$3.5
1999	\$5.2	\$3.6
2001	\$2.6	\$6.2
2003	\$3.0	\$8.2
2005	\$4.7	\$8.5
2007	\$18.1	\$4.1
2009	\$15.8	\$6.1
2011	\$1.8	\$26.4

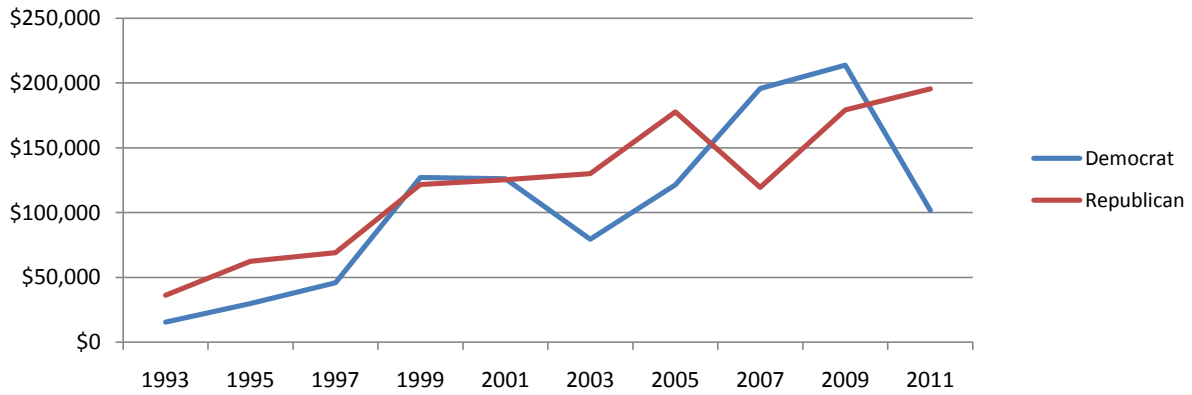
**Median Cash on Hand**

	Democrat	Republican
1993	\$19,426	\$20,944
1995	\$23,807	\$59,698
1997	\$59,925	\$81,938
1999	\$201,371	\$212,800
2001	\$172,990	\$187,852
2003	\$148,424	\$241,615
2005	\$154,174	\$303,139
2007	\$432,418	\$207,347
2009	\$403,685	\$241,562
2011	\$149,903	\$267,818

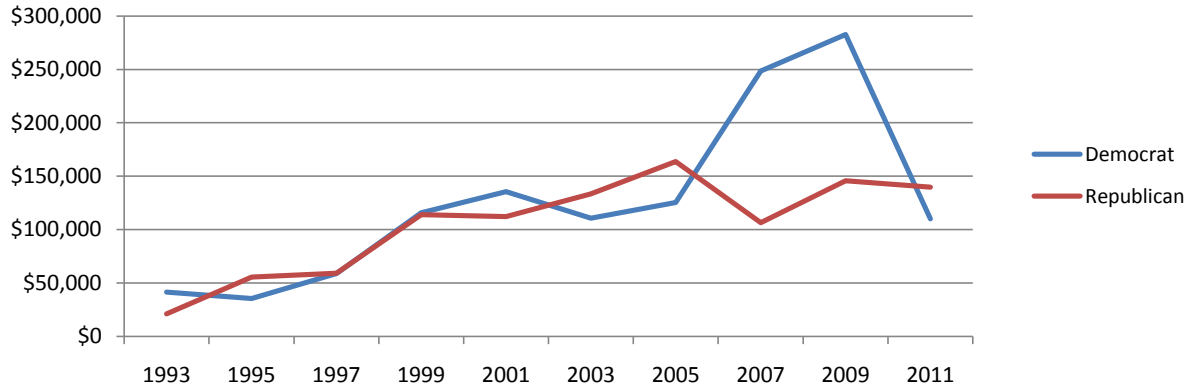
### Median Receipts of House Freshmen Through June 30 of the Non-Election Year



### Median Contributions from Individuals to House Freshmen Through June 30 of the Non-Election Year



### Median Contributions from PACs and Other Committees to House Freshmen Through June 30 of the Non-Election Year



### Median Cash on Hand of House Freshmen as of June 30 of the Non-Election Year

