

**Financial Activity of House Incumbents
Through June 30 of the Non-Election Year**

Total Receipts

	Democrats		Republicans		Median Receipts	
	Number	Receipts	Number	Receipts	Democrat	Republican
1993	258	\$21.1	176	\$12.9	1993	\$69,598 \$63,290
1995	202	\$17.4	232	\$28.1	1995	\$64,691 \$110,203
1997	207	\$22.1	227	\$30.8	1997	\$72,726 \$105,987
1999	211	\$34.1	223	\$43.7	1999	\$111,699 \$158,803
2001	210	\$37.8	220	\$45.2	2001	\$145,748 \$171,469
2003	205	\$40.7	228	\$52.1	2003	\$150,613 \$184,932
2005	204	\$48.8	224	\$67.7	2005	\$188,745 \$245,137
2007	238	\$87.2	203	\$56.2	2007	\$262,268 \$238,016
2009	259	\$82.7	178	\$48.4	2009	\$253,720 \$221,674
2011	189	\$56.9	231	\$94.7	2011	\$245,859 \$315,735

(millions of dollars)

Contributions from Individuals

	Democrat		Republican		Median from Individuals	
					Democrat	Republican
1993		\$7.8		\$6.7	1993	\$16,130 \$24,855
1995		\$7.5		\$14.2	1995	\$17,583 \$51,119
1997		\$10.2		\$16.6	1997	\$25,090 \$51,893
1999		\$16.5		\$23.5	1999	\$41,005 \$78,738
2001		\$17.5		\$22.5	2001	\$50,927 \$78,935
2003		\$21.1		\$27.0	2003	\$71,213 \$95,665
2005		\$26.1		\$33.8	2005	\$83,720 \$116,217
2007		\$41.7		\$28.6	2007	\$100,379 \$111,033
2009		\$36.8		\$25.8	2009	\$101,575 \$113,344
2011		\$28.2		\$47.6	2011	\$108,730 \$158,525

(millions of dollars)

Contributions from PACs and other Committees

	Democrat		Republican		Median from PACs	
					Democrat	Republican
1993		\$11.7		\$5.3	1993	\$39,303 \$25,772
1995		\$8.4		\$13.3	1995	\$34,000 \$47,331
1997		\$10.8		\$12.8	1997	\$43,666 \$45,450
1999		\$16.0		\$16.5	1999	\$62,800 \$64,000
2001		\$17.8		\$19.1	2001	\$75,650 \$75,461
2003		\$17.9		\$22.9	2003	\$72,325 \$74,959
2005		\$21.6		\$31.6	2005	\$86,055 \$104,825
2007		\$42.7		\$24.7	2007	\$139,406 \$102,438
2009		\$43.9		\$20.9	2009	\$138,500 \$101,834
2011		\$26.8		\$40.1	2011	\$120,500 \$137,862

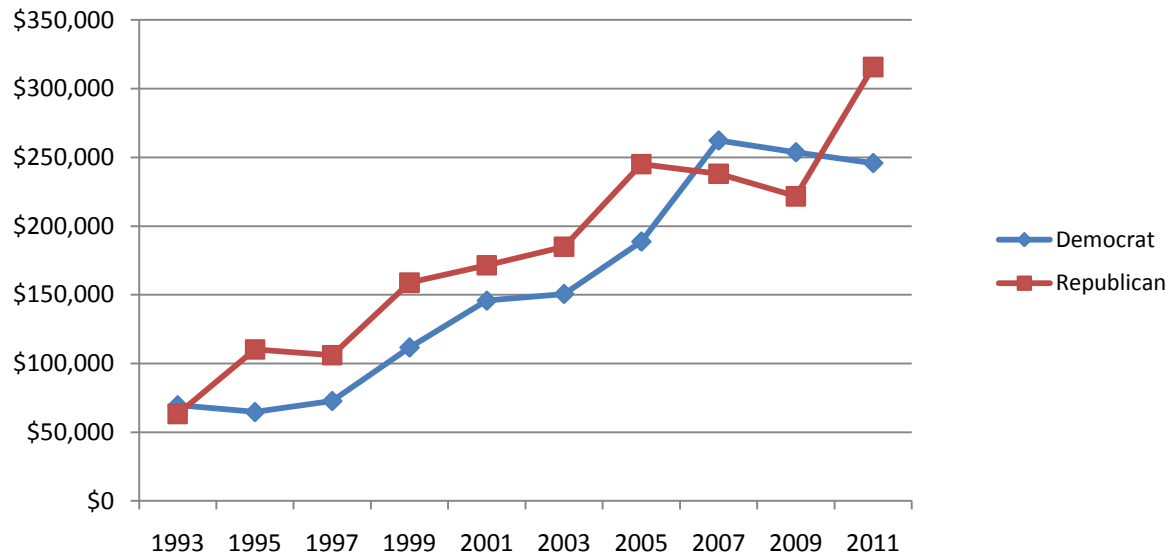
(millions of dollars)

Cash on Hand on June 30

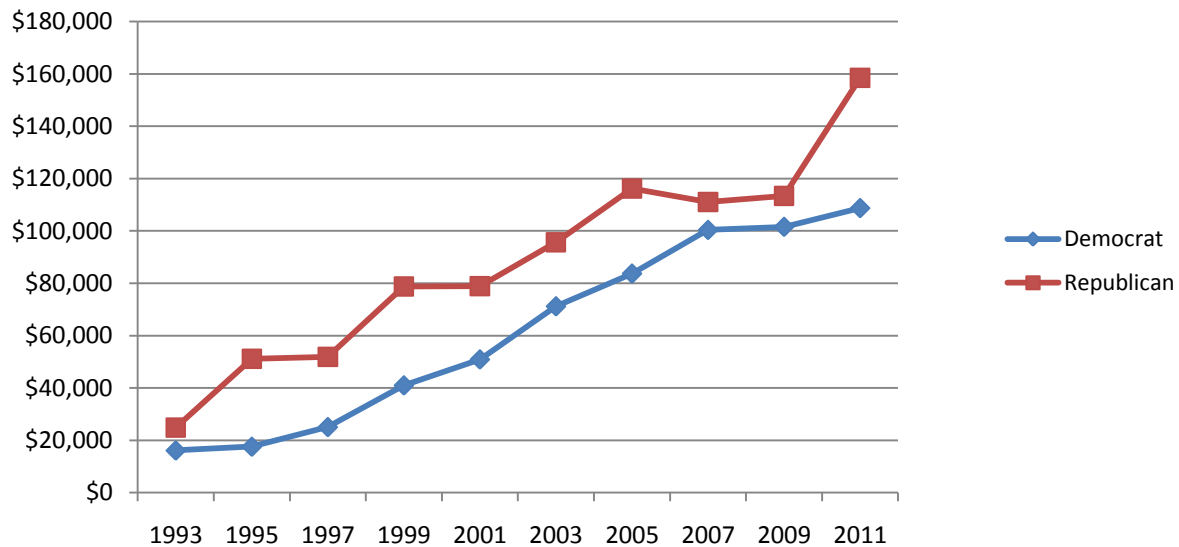
	Democrat		Republican		Median Cash on Hand	
					Democrat	Republican
1993		\$32.7		\$19.4	1993	\$51,157 \$58,142
1995		\$31.3		\$38.3	1995	\$70,354 \$110,615
1997		\$33.3		\$50.1	1997	\$91,810 \$144,711
1999		\$59.2		\$72.3	1999	\$194,247 \$242,779
2001		\$74.6		\$79.8	2001	\$255,416 \$272,134
2003		\$79.3		\$91.8	2003	\$254,112 \$291,448
2005		\$94.7		\$115.7	2005	\$331,976 \$372,188
2007		\$135.3		\$96.0	2007	\$409,935 \$346,212
2009		\$152.7		\$80.2	2009	\$424,562 \$339,136
2011		\$92.3		\$125.1	2011	\$313,602 \$355,150

(millions of dollars)

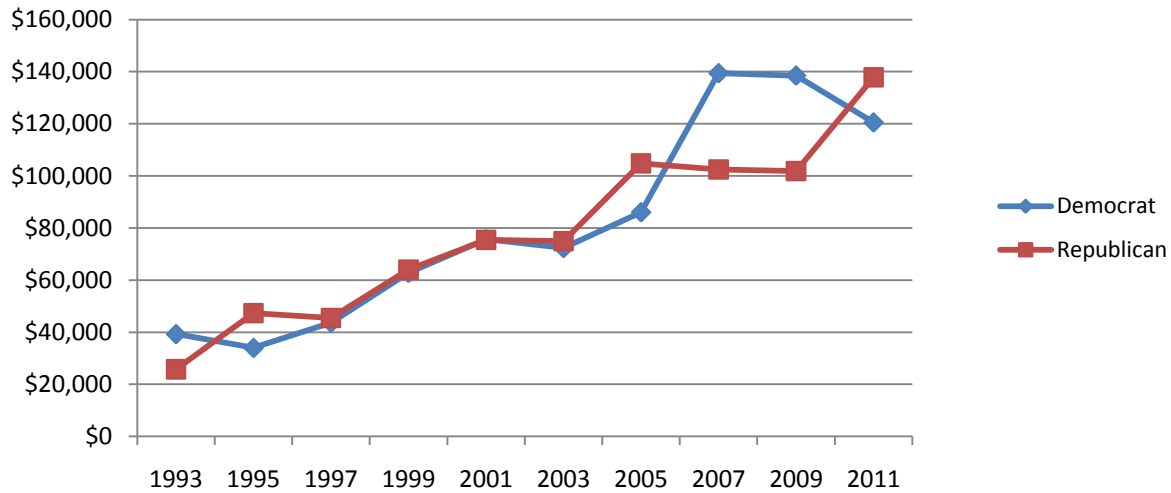
Median Receipts of House Incumbents Through June 30 of the Non-Election Year



Median Contributions from Individuals to House Incumbents Through June 30 of the Non-Election Year



Median Contributions from PACs and Other Committees to House Incumbents Through June 30 of the Non-Election Year



Median Cash on Hand of House Incumbents as of June 30 of the Non-Election Year

