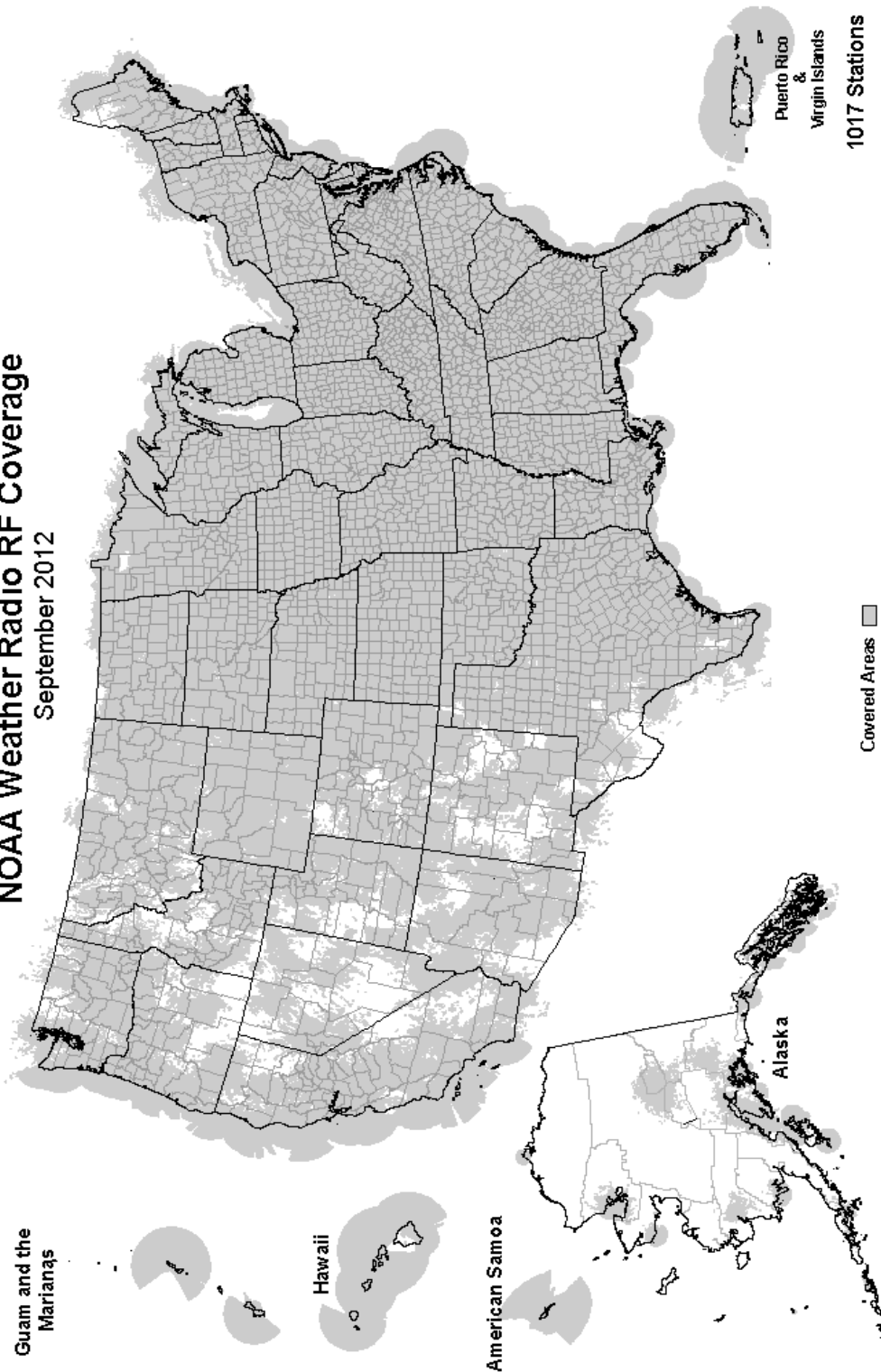


NOAA Weather Radio RF Coverage
September 2012



The Voice of NOAA's National Weather Service

< Over 1000 Transmitters >

Broadcasting Continuous Weather Information on the Following Frequencies:

- 162.400 MHz
- 162.425 MHz
- 162.450 MHz
- 162.475 MHz
- 162.500 MHz
- 162.525 MHz
- 162.550 MHz

U.S. Department of Commerce
National Oceanic and Atmospheric Administration
National Weather Service

<http://www.weather.gov/nwr/>



NOAA/PA 94062
Rev October 2012

NOAA WEATHER RADIO

The Voice of NOAA's National Weather Service

<http://www.weather.gov/nwr>

NOAA Weather Radio is a service of the National Oceanic and Atmospheric Administration (NOAA) of the U.S. Department of Commerce. As the "voice of the National Weather Service," it provides continuous broadcasts (24 hours a day) of the latest weather information from local National Weather Service offices. Weather messages are repeated every 4 to 6 minutes and are routinely updated every 1 to 6 hours or more frequently in rapidly changing local weather or if a nearby natural hazardous or manmade condition exists.



The regular broadcasts are specifically tailored to weather information needs of the people within the service area of the transmitter. For example, in addition to general weather information, stations in coastal areas provide information of interest to mariners. Other specialized information, such as hydrological forecasts and other climate data may be broadcast.

During severe weather, National Weather Service forecasters can interrupt the routine weather broadcasts and insert special warning messages concerning imminent threats to life and property. The forecaster can also add special signals to warnings that trigger "alerting" features of specially equipped receivers. In the simplest case, this signal activates audible or visual alarms, indicating that an emergency condition exists within the broadcast areas of the station being monitored, and alerts the listener to turn up the volume and stay tuned for more information. More sophisticated receivers are automatically turned on and set to an audible volume when an alert is received.

In the most sophisticated alerting system, NOAA Weather Radio Specific Area Message Encoding (SAME), digital coding is employed to activate only those special receivers programmed for specific emergency conditions in specific area, typically a county. SAME can activate specially equipped radio and cable television receivers and provide a short text message that identifies the location and type of emergency. SAME is the primary activator for the FCC Emergency Alert System (EAS).

To program NWR SAME receivers with the proper county(s) and marine area(s) of choice, you need to know the 6-digit SAME code number(s) for that county(s). Once you have your code number(s), follow the manufacturer's directions for programming your NWR SAME receiver. You can obtain your SAME code numbers by dialing:

888-NWR-SAME (888-697-7263) – Voice & TTY/TTD Accessible

Under a January 1975 White House policy statement, NOAA Weather Radio was designated the sole Government-operated radio system to provide direct warning into private homes for both

SOUTH CAROLINA	Burkeville.....	162.425	Manti.....	162.425	Morgantown.....	162.475
Aiken.....	Carrizo Springs.....	162.550	Milford/Cedar City.....	162.400	Sutton.....	162.450
Aynor.....	Center.....	162.525	Moab.....	162.475		
Barnwell.....	Childress.....	162.525	Monticello.....	162.450	WISCONSIN	
Beaufort.....	Cisco.....	162.500	Salt Lake City.....	162.550	Ashland.....	162.525
Charleston.....	Coleman.....	162.475	St. George.....	162.475	Baraboo.....	162.450
Cheraw.....	Corpus Christi.....	162.550	Tabiona.....	162.550	Black River Falls.....	162.500
Columbia.....	Corsicana.....	162.525	Tooele (South Mountain).....	162.450	Coloma.....	162.400
Cross.....	Crowley/Fort Worth.....	162.550	Tooele (Vernon Hills).....	162.525	Crandon.....	162.450
Florence.....	Cumby.....	162.500	Vernal.....	162.400	Dubuque.....	162.400
Georgetown.....	Dallas.....	162.400	Wendover.....	162.475	Fond Du Lac.....	162.500
Greenville.....	Del Rio.....	162.400			Green Bay.....	162.550
Jasper County.....	D'Hanis.....	162.525	VERMONT		Gresham.....	162.500
Kirksey.....	Dickens.....	162.500	Burlington.....	162.400	Janesville.....	162.425
Orangeburg.....	Dilley.....	162.500	Castleton.....	162.500	Ladysmith.....	162.550
Rock Hill.....	El Paso.....	162.475	Marlboro.....	162.425	Madison.....	162.550
Sumter.....	El Paso Spanish.....	162.550	St. Johnsbury.....	162.425	Menomonie.....	162.400
	Galveston.....	162.550	Windsor.....	162.475	Milwaukee.....	162.400
	Gilmer.....	162.425			New London.....	162.525
SOUTH DAKOTA	Gonzales.....	162.525	VIRGIN ISLANDS		Park Falls.....	162.500
Aberdeen.....	Guadalupe Mt Nat'l. Park.....	162.525	St. Croix.....	162.500	Prairie Du Chien.....	162.500
Arlington.....	Junction.....	162.475			Racine.....	162.450
Faith.....	Kerrville.....	162.450	VIRGINIA		Rhineland.....	162.400
Firesteel.....	La Grange.....	162.500	Accomack.....	162.525	Richland Center.....	162.475
Hot Springs.....	Laredo.....	162.550	Covesville.....	162.450	Sheboygan.....	162.525
Lead.....	Llano.....	162.425	Fredericksburg.....	162.425	Sister Bay.....	162.425
Lowry.....	Lubbock.....	162.400	Heathsville.....	162.400	Spooner.....	162.475
Mitchell.....	Lufkin.....	162.550	Lynchburg.....	162.550	Tomah.....	162.525
Philip.....	Marietta.....	162.525	Manassas.....	162.550	Wausau.....	162.475
Pickstown.....	Miami.....	162.450	Norfolk.....	162.550	Wausaukee.....	162.400
Pierre.....	Midland/Odessa.....	162.400	Richmond.....	162.475	Winona.....	162.425
Porcupine.....	Milano.....	162.525	Roanoke.....	162.475	Withee.....	162.425
Rapid City.....	Mineral Wells.....	162.525	Sand Mtn.....	162.450		
Reliance.....	Muenster.....	162.425	South Boston.....	162.525	WYOMING	
Sioux Falls.....	New Taiton.....	162.450			Afton.....	162.425
South Shore.....	Onalaska.....	162.500	WASHINGTON		Casper.....	162.400
Wessington.....	Ozona.....	162.500	Astoria.....	162.400	Cheyenne.....	162.550
White River.....	Palestine.....	162.450	Capitol Peak.....	162.475	Cody.....	162.400
	Paris.....	162.550	Cle Elum.....	162.400	Dubois.....	162.450
TENNESSEE	Pecos.....	162.450	Davis Peak.....	162.525	Elk Plaza.....	162.425
Bristol.....	Perryton.....	162.475	Dayton.....	162.525	Evanston.....	162.450
Centerville.....	Pharr.....	162.400	Forks.....	162.425	Gillette.....	162.500
Chattanooga.....	Plainview.....	162.450	H Street - Blaine Area.....	162.525	Glendo.....	162.450
Clarksville.....	Port O'Connor.....	162.475	Neah Bay.....	162.550	Grant Village.....	162.450
Clifton.....	Richland Springs.....	162.525	Okanogan.....	162.525	Jackson.....	162.525
Cookeville.....	Rio Grande City.....	162.425	Plymouth.....	162.425	Kaycee.....	162.550
Dyersburg.....	Riviera.....	162.525	Puget Sound Marine.....	162.425	Kemmerer.....	162.525
Hickman.....	San Angelo.....	162.550	Randle.....	162.425	Lander.....	162.475
Jackson.....	San Antonio.....	162.550	Richland.....	162.450	Newcastle.....	162.475
Knoxville.....	Seguin.....	162.475	Seattle.....	162.550	Pinedale.....	162.500
La Follette.....	Seminole.....	162.425	Spokane.....	162.400	Rawlins.....	162.425
Lafayette.....	Sherman.....	162.475	Wenatchee.....	162.475	Rock Springs.....	162.550
Lawrenceburg.....	Stephenville.....	162.450	Yakima.....	162.550	Sheridan.....	162.475
Lobelville.....	Summerfield.....	162.500			Thermopolis.....	162.500
Memphis.....	Sweetwater.....	162.425	WEST VIRGINIA		World.....	162.525
Nashville.....	Texarkana.....	162.550	Backbone Mountain.....	162.450		
Shelbyville.....	Three Rivers.....	162.450	Beckley.....	162.550	As of October, 2012 NOAA is	
Spencer.....	Throckmorton.....	162.425	Charleston.....	162.400	operating 1017 stations	
Vale.....	Tomball.....	162.400	Clarksburg.....	162.550	across the United States and	
Waverly.....	Tyler.....	162.475	Garfield.....	162.500	its territories.	
Winchester.....	Uvalde.....	162.425	Gilbert.....	162.475		
	Victoria.....	162.400	Greggs Knob.....	162.500		
TEXAS	Waco.....	162.475	Hinton.....	162.425		
Abilene.....	Wichita Falls.....	162.475	Monterville.....	162.525		
Alpine.....			Moorefield.....	162.400		
Amarillo.....						
Austin.....						
Bay City.....						
Beaumont.....						
Big Spring.....						
Borger.....						
Brownsville.....						
Bryan.....						
	UTAH					
	Bear Lake.....	162.500				
	Castle Dale.....	162.500				
	Coalville/ Park City.....	162.475				
	Escalante.....	162.425				
	Lake Powell.....	162.550				
	Logan.....	162.400				

The National Weather Service requests your assistance in reporting any outages of NOAA Weather Broadcast Stations.

Please use our Toll Free Number (888) 697-7263 or send an Email to nwroutage@noaa.gov to report the outage.

El Dorado Springs.....	162.475	Shubert.....	162.500
Fredericktown.....	162.500	Sidney.....	162.500
Gainesville.....	162.425	Superior.....	162.525
Hannibal.....	162.475	Trenton.....	162.500
Hermitage.....	162.450	Valentine.....	162.450
Jamestown.....	162.425	Yankton.....	162.500
Joplin.....	162.425		
Kahoka.....	162.450		
Kansas City.....	162.550		
La Plata.....	162.525		
Lancaster.....	162.550		
Maryville.....	162.425		
Neosho.....	162.450		
Piedmont.....	162.425		
Springfield.....	162.400		
St. Louis.....	162.550		
Summersville.....	162.475		
Trenton.....	162.500		
Wardell.....	162.525		
West Plains.....	162.525		

MONTANA

Baker.....	162.550		
Belgian Hill.....	162.500		
Billings.....	162.550		
Bozeman.....	162.500		
Broadus.....	162.425		
Browning.....	162.525		
Butte.....	162.550		
Circle.....	162.550		
Dillon.....	162.475		
Ekalaka.....	162.475		
Forsyth.....	162.525		
Glasgow.....	162.400		
Glendive.....	162.475		
Glentana.....	162.525		
Great Falls.....	162.550		
Hardin.....	162.450		
Havre.....	162.400		
Helena.....	162.400		
Jordan.....	162.500		
Kalispell.....	162.550		
Lewistown.....	162.500		
Livingston.....	162.525		
Malta.....	162.475		
Miles City.....	162.400		
Missoula.....	162.400		
Plentywood.....	162.475		
Poplar.....	162.425		
Ryegate.....	162.450		
Scobey.....	162.450		
Winnett.....	162.400		

NEBRASKA

Albion.....	162.500		
Bassett.....	162.475		
Beatrice.....	162.450		
Cambridge.....	162.525		
Chadron.....	162.525		
Columbus.....	162.450		
Grand Island.....	162.400		
Holdrege.....	162.475		
Lexington.....	162.425		
Lincoln.....	162.475		
Merna.....	162.500		
Merriman.....	162.400		
Mullen.....	162.425		
Norfolk.....	162.550		
North Platte.....	162.550		
Omaha.....	162.400		
Ord.....	162.525		
Oshkosh.....	162.525		
Scottsbluff.....	162.475		

White Hill.....	162.525		
NORTH CAROLINA			
Asheville.....	162.400		
Buck Mountain.....	162.500		
Cape Hatteras.....	162.475		
Chapel Hill.....	162.550		
Charlotte.....	162.475		
Ellerbe.....	162.400		
Garner.....	162.450		
Henderson.....	162.500		
Linville.....	162.450		
Mamie.....	162.425		
Margarettsville.....	162.450		
Mooreville.....	162.525		
Mount Jefferson.....	162.500		
New Bern.....	162.400		
Robbinsville.....	162.525		
Rocky Mount.....	162.475		
Saint Pauls.....	162.475		
Warsaw.....	162.425		
Windsor.....	162.525		
Winnabow.....	162.550		
Winston-Salem.....	162.400		

OREGON			
Bend/Redmond.....	162.500		
Brookings.....	162.550		
Burns Butte.....	162.475		
Cape Blanco.....	162.425		
Carney Butte.....	162.475		
Coos Bay.....	162.400		
Eugene.....	162.400		
Florence.....	162.500		
Fossil.....	162.550		
Heppner.....	162.425		
John Day.....	162.500		
Klamath Falls.....	162.550		
Medford.....	162.400		
Mt Hebo.....	162.525		
Mt. Ashland.....	162.475		
Neahkahnie.....	162.425		
Newport.....	162.550		
Portland.....	162.550		
Reedsport.....	162.525		
Roseburg.....	162.550		
Salem.....	162.475		
Spout Springs.....	162.400		
The Dalles.....	162.400		
Tillamook.....	162.475		

NORTH DAKOTA			
Bismarck.....	162.475		
Cavalier.....	162.450		
Dickinson.....	162.400		
Fargo.....	162.475		
Fort Ransom.....	162.525		
Grand Forks.....	162.475		
Jamestown.....	162.550		
Langdon.....	162.500		
Minot.....	162.400		
New Town.....	162.525		
Petersburg.....	162.400		
Rolla.....	162.475		
Scranton.....	162.525		
Sheyenne.....	162.525		
Steele.....	162.400		
Webster.....	162.425		
Williston.....	162.550		
Willow City.....	162.450		

NORTHERN MARIANA ISLANDS			
Saipan.....	162.550		

OHIO			
Akron.....	162.400		
Athens.....	162.425		
Bridgeport.....	162.525		
Carey.....	162.525		
Chillicothe.....	162.500		
Cleveland.....	162.550		
Columbus.....	162.550		
Dayton.....	162.475		
Elmira.....	162.500		
High Hill.....	162.475		
Lima.....	162.400		
Mansfield.....	162.450		
Marietta.....	162.400		
New Philadelphia.....	162.425		
Otway.....	162.525		
Sandusky.....	162.400		
Toledo.....	162.500		
Youngstown.....	162.500		

OKLAHOMA			
Altus.....	162.425		
Antlers.....	162.400		
Ardmore.....	162.525		
Atoka.....	162.500		

Bartlesville.....	162.425		
Broken Bow.....	162.450		
Chickasha.....	162.450		
Clinton.....	162.525		
Enid.....	162.475		
Grove.....	162.500		
Guymon.....	162.500		
Lawton.....	162.550		
McAlester.....	162.475		
Oklahoma City.....	162.400		
Oktaha.....	162.525		
Ponca City.....	162.450		
Stillwater.....	162.500		
Tulsa.....	162.550		
Wewoka.....	162.550		
Woodward.....	162.500		

PENNSYLVANIA			
Allentown.....	162.400		
Altoona.....	162.425		
Clearfield.....	162.550		
Coudersport.....	162.500		
Erie.....	162.400		
Harrisburg.....	162.550		
Hibernia Park.....	162.425		
Honesdale.....	162.450		
Huntingdon.....	162.525		
Johnstown.....	162.400		
Meadville.....	162.475		
Parker.....	162.425		
Philadelphia.....	162.475		
Pittsburgh.....	162.550		
Punxsutawney.....	162.500		
State College.....	162.475		
Towanda.....	162.525		
Warren.....	162.450		
Wellsboro.....	162.475		
Wilkes-Barre.....	162.550		
Williamsport.....	162.400		

PUERTO RICO			
Culebra.....	162.450		
Maricao.....	162.550		
San Juan.....	162.400		

RHODE ISLAND			
Providence.....	162.400		

natural disasters and nuclear attack. This concept has been expanded to include warnings for all hazardous conditions that pose a threat to life and safety, both at a local and national level. As a result, NOAA Weather Radio is being better integrated with other National Weather Service systems to provide state and local emergency managers and other warning providers better access to local weather forecast offices, allowing hazard warnings of all types to be broadcast on NOAA Weather Radio within seconds

NOAA Weather Radio currently broadcasts from 1017 stations in fifty states, Puerto Rico, the U.S. Virgin Islands, American Samoa, Guam, and Saipan on seven frequencies in the VHF band, ranging from 162.400 to 162.550 megahertz (MHz). These frequencies are outside the normal AM or FM broadcast bands.

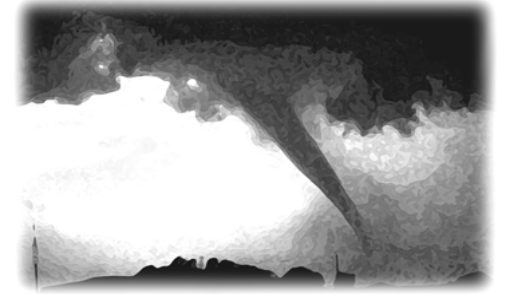
Special radios that receive only NOAA Weather Radio, both with and without special alerting features, are available from numerous manufacturers. In addition, other manufacturers are including NWR capability in a variety of receivers. NOAA Weather Radio capability is currently available on automobile, aircraft, marine, citizens band, and standard AM/FM radios as well as communications receivers, transceivers, scanners, and cable TV.

By nature and design, NOAA Weather Radio coverage is limited to an area within 40 miles of the transmitter. The quality of reception is dictated by transmitter distance, local terrain, and the quality and location of the receiver. In general, those using a high quality receiver on flat terrain or at sea can expect reliable reception beyond 40 miles. Those with standard receivers, surrounded by large buildings in cities and those in mountain valleys may experience little or no reception at considerably less than 40 miles. If possible, a receiver should be tested in the location where it will be used prior to purchase.

NOAA Weather Radio is directly available to a large portion of the U.S. population. The National Weather Service is currently engaged in a program to increase coverage to at least 95 percent of the population.

If you have a question regarding the technical aspects of NOAA Weather Radio such as transmitter location, reception, and characteristics or if you are interested in becoming a partner with the National Weather Service to identify or provide local funding and/or facilities for the installation of a NOAA Weather Radio transmitter, please contact your local National Weather Service Office or send a letter to:

National Weather Service
 Attn: Dissemination Systems Branch, W/OPS17
 1325 East-West Highway
 Silver Spring, MD 20910



The following is a listing of operational stations by state. For specific coverage information for your local area please visit our website at:

<http://www.weather.gov/nwr/>

ALABAMA

Anniston	162.475
Arab.....	162.525
Auburn.....	162.525
Birmingham.....	162.550
Brewton.....	162.475
Columbus.....	162.400
Cullman.....	162.450
Demopolis.....	162.475
Dozier.....	162.550
Florence.....	162.475
Greenville.....	162.425
Henagar.....	162.500
Huntsville.....	162.400
Jackson.....	162.500
Louisville.....	162.475
Mobile.....	162.550
Montgomery.....	162.400
Oneonta.....	162.425
Selma.....	162.450
Tuscaloosa.....	162.400
Winfield.....	162.525

ALASKA

Althorp Peak.....	162.425
Anchorage.....	162.550
Barrow.....	162.550
Bede Mountain.....	162.450
Bethel.....	162.550
Cape Fanshaw.....	162.425
Cape Gull.....	162.500
Cape Hinchinbrook.....	162.525
Cold Bay.....	162.425
Cordova.....	162.400
Craig.....	162.475
Dillingham.....	162.500
Duke Island.....	162.450
East Point.....	162.500
Fairbanks.....	162.550
Glennallen.....	162.550
Gravina Island.....	162.525
Haines.....	162.400
Homer.....	162.400
Juneau.....	162.550
Ketchikan.....	162.550
Kodiak.....	162.550
Kotzebue.....	162.550
Manleyville.....	162.500
Marmot Island.....	162.500
Mt. McArthur.....	162.525
Mt. Robert Barron.....	162.450
Nenana.....	162.400
Ninilchik.....	162.550
Nome.....	162.550
Pillar Mtn.....	162.525
Point Pigot.....	162.450
Potato Point.....	162.425
Raspberry Island.....	162.425
Rugged Island.....	162.425
Saint Paul Island.....	162.525
Sand Point.....	162.550
Seward.....	162.550
Sitka.....	162.550

Sitkinak Dome.....	162.450
Soldotna.....	162.475
Sukkwan Island.....	162.425
Tuklung Mtn.....	162.425
Unalaska.....	162.550
Valdez.....	162.550
Wasilla.....	162.400
Whittier.....	162.475
Wrangell.....	162.400
Yakutat.....	162.400
Zarembo Island.....	162.450

AMERICAN SAMOA

Mt. Oloete.....	162.550
Pago Pago.....	162.400

ARIZONA

Flagstaff.....	162.400
Globe Gila County S.....	162.500
Grand Canyon.....	162.475
Greer.....	162.525
Kingman.....	162.425
Lake Havasu.....	162.400
Nogales.....	162.500
Payson Gila County N.....	162.425
Phoenix.....	162.550
Prescott.....	162.525
Safford.....	162.550
Show Low.....	162.400
Tucson.....	162.400
Window Rock.....	162.550

ARKANSAS

Cherokee Village.....	162.475
El Dorado.....	162.525
Fayetteville.....	162.475
Fort Smith.....	162.550
Fountain Hill.....	162.475
Gurdon.....	162.475
Harrison.....	162.525
High Peak.....	162.425
Jonesboro.....	162.550
Little Rock.....	162.550
Marvell.....	162.525
Mena.....	162.400
Morrilton.....	162.475
Mountain View.....	162.450
Russell.....	162.400
Russellville.....	162.525
Springdale.....	162.400
Star City.....	162.400
Yellville.....	162.500

CALIFORNIA

Avalon.....	162.525
Bakersfield.....	162.550
Big Rock Ridge.....	162.500
Bishop.....	162.425
Coachella.....	162.400
Coachella / Spanish.....	162.525
Contra Costa County.....	162.425
Conway Summit.....	162.525
El Paso Mtns.....	162.425
Eureka.....	162.400
Fresno.....	162.400
Grass Valley.....	162.400
Los Angeles.....	162.550
Monterey.....	162.550
Monterey Marine.....	162.450
Point Arena.....	162.550
Redding.....	162.550
Sacramento.....	162.550

San Diego.....	162.400
San Diego Marine.....	162.425
San Francisco.....	162.400
San Luis Obispo.....	162.550
San Simeon.....	162.525
Sandberg.....	162.400
Santa Ana.....	162.450
Santa Barbara.....	162.400
Santa Barbara Marine.....	162.475
Sonoma County.....	162.475
Ukiah.....	162.525
Victorville.....	162.500
Yosemite.....	162.450
Yuma.....	162.550

COLORADO

Alamosa.....	162.475
Anton.....	162.450
Bethune.....	162.525
Boyero.....	162.450
Canon City.....	162.500
Colorado Springs.....	162.475
Deer Trail.....	162.500
Denver.....	162.550
Dillon.....	162.400
Durango.....	162.425
Eagle.....	162.450
Fort Collins/Ault.....	162.450
Fort Morgan.....	162.525
Fowler.....	162.425
Franktown.....	162.450
Glenwood Springs.....	162.500
Grand Junction.....	162.550
Greeley.....	162.400
La Junta.....	162.500
Lamar.....	162.525
Mead/Longmont.....	162.475
Montrose.....	162.450
Pueblo.....	162.400
Springfield.....	162.400
Steamboat Springs.....	162.525
Sterling.....	162.400
Walsenburg.....	162.450
Wray.....	162.475

CONNECTICUT

Cornwall.....	162.500
Hartford.....	162.475
Meriden.....	162.400
New London.....	162.550

DELAWARE

Lewes.....	162.550
Salisbury.....	162.475

DISTRICT OF COLUMBIA

Washington DC.....	162.450
--------------------	---------

FLORIDA

Belle Glade.....	162.400
Daytona Beach.....	162.400
East Point.....	162.500
Fort Myers.....	162.475
Fort Pierce.....	162.425
Gainesville.....	162.475
Hialeah Spanish.....	162.500
Inverness.....	162.400
Jacksonville.....	162.550
Key West.....	162.400
Lake City.....	162.400
Largo.....	162.450
Melbourne.....	162.550

Miami.....	162.550
Morrison.....	162.550
Naples.....	162.525
Ocala.....	162.525
Orlando.....	162.475
Palatka.....	162.425
Panama City.....	162.550
Pensacola.....	162.400
Princeton.....	162.425
Salem.....	162.425
Sebring.....	162.500
Sneads.....	162.425
Sumterville.....	162.500
Tallahassee.....	162.400
Tampa Bay.....	162.550
Tea Table Key.....	162.450
Venice.....	162.400
West Palm Beach.....	162.475
Westville.....	162.450

GEORGIA

Americus.....	162.425
Ashburn.....	162.450
Athens.....	162.400
Atlanta.....	162.550
Augusta.....	162.550
Baxley.....	162.525
Blakely.....	162.525
Blue Ridge.....	162.475
Brasstown Bald.....	162.500
Brunswick.....	162.425
Buchanan.....	162.425
Chatsworth.....	162.400
Clayton.....	162.450
Cleveland.....	162.525
Eastman.....	162.400
Eatonton.....	162.525
Jesup.....	162.450
La Grange.....	162.450
Macon.....	162.475
Metter.....	162.425
Pelham.....	162.550
Sandersville.....	162.450
Summerville.....	162.450
Thomaston.....	162.500
Toccoa.....	162.425
Valdosta.....	162.500
Washington.....	162.500
Waycross.....	162.475
Waynesboro.....	162.425

GUAM

Guam.....	162.400
-----------	---------

HAWAII

Hawaii Kai.....	162.400
Kauai.....	162.400
Kulani Cone.....	162.550
Maui.....	162.400
Oahu.....	162.550
South Point.....	162.550

IDAHO

Boise.....	162.550
Bonnars Ferry.....	162.500
Burley.....	162.475
Driggs.....	162.450
Grangeville.....	162.450
Lewiston.....	162.550
McCall.....	162.475
Orofino.....	162.500
Payette.....	162.400

Pocatello.....	162.550
Salmon.....	162.500
Sedgwick Peak.....	162.425
Sun Valley.....	162.450
Twin Falls.....	162.400

ILLINOIS

Bloomington.....	162.525
Champaign.....	162.550
Chester.....	162.450
Chicago.....	162.550
Crescent City.....	162.500
Crystal Lake.....	162.500
DeKalb.....	162.550
Dixon.....	162.525
Freeport.....	162.450
Galesburg.....	162.400
Hillsboro.....	162.425
Jacksonville.....	162.525
Jerseyville.....	162.450
Kankakee.....	162.525
Lockport.....	162.425
Macomb.....	162.500
Marion.....	162.425
McLeansboro.....	162.400
Newton.....	162.450
Odell.....	162.450
Paris.....	162.525
Peoria.....	162.475
Plano.....	162.400
Princeton.....	162.425
Quad Cities.....	162.550
Rockford.....	162.475
Salem.....	162.475
Shelbyville.....	162.500
Springfield.....	162.400

INDIANA

Angola.....	162.425
Bloomington.....	162.450
Edwardsport.....	162.425
Evansville.....	162.550
Fort Wayne.....	162.550
Georgia.....	162.500
Hebron.....	162.450
Indianapolis.....	162.550
Marion.....	162.450
Michigan City.....	162.500
Monticello/Lafayette.....	162.475
Muncie.....	162.425
New Albany.....	162.475
Newport.....	162.425
North Webster.....	162.500
Putnamville.....	162.400
Richmond.....	162.500
Seymour.....	162.525
South Bend.....	162.400

IOWA

Burlington.....	162.525
Carroll.....	162.425
Cedar Rapids.....	162.475
Decorah.....	162.525
Denison.....	162.550
Des Moines.....	162.550
Essex.....	162.550
Fairfield.....	162.400
Forest City.....	162.500
Fort Dodge.....	162.400
Hancock/Pottawattam.....	162.525
Iowa Falls.....	162.525
Lake Rathbun.....	162.425
Lenox.....	162.450

Manchester.....	162.450
Maquoketa.....	162.425
Marshalltown.....	162.500
Milford.....	162.550
Montezuma.....	162.450
Ottumwa.....	162.500
Ringsted.....	162.475
Sanborn.....	162.525
Sioux City.....	162.475
St. Ansgar.....	162.450
Storm Lake.....	162.450
Van Wert.....	162.475
Waterloo.....	162.550

KANSAS

Abilene.....	162.525
Beaumont.....	162.500
Belvidere.....	162.525
Blue Rapids.....	162.425
Chanute.....	162.400
Concordia.....	162.550
Dighton.....	162.525
Dodge City.....	162.475
Ellsworth.....	162.400
Gem.....	162.400
Great Bend.....	162.500
Halls Summit.....	162.425
Hays.....	162.450
Kirwin.....	162.500
Lenora.....	162.425
Meade.....	162.425
Parker.....	162.525
Saint Joseph.....	162.400
Sharon.....	162.400
Topeka.....	162.475
Tribune.....	162.550
Ulysses.....	162.450
Wichita.....	162.550

KENTUCKY

Ashland.....	162.550
Beattyville.....	162.500
Bowling Green.....	162.400
Burkesville.....	162.475
Campbellsville.....	162.525
Covington.....	162.550
East Madison County.....	162.525
Ekron.....	162.450
Elizabethtown.....	162.550
Frankfort.....	162.500
Frenchburg.....	162.475
Harlan.....	162.450
Hazard.....	162.475
Hopkinsville.....	162.450
Horse Cave.....	162.500
Irvine.....	162.475
Jackson.....	162.425
Lexington.....	162.400
London.....	162.475
Madison County.....	162.525
Madisonville.....	162.525
Manchester.....	162.400
Mayfield.....	162.475
Maysville.....	162.425
McKee.....	162.450
Moberly.....	162.525
Monticello.....	162.425
Morehead.....	162.425
Mount Vernon.....	162.425
Owenton.....	162.450
Paintsville.....	162.525
Phelps.....	162.500
Pikeville.....	162.400

Pineville.....	162.525
Somerset.....	162.550
Stanton.....	162.550
West Liberty.....	162.450
West Madison County.....	162.525
Whitesville.....	162.475
Williamsburg.....	162.500

LOUISIANA

Alexandria.....	162.475
Baton Rouge.....	162.400
Bogalusa.....	162.525
Buras.....	162.475
Lafayette.....	162.550
Lake Charles.....	162.400
Monroe.....	162.550
Morgan City.....	162.475
Natchitoches.....	162.500
New Orleans.....	162.550
Shreveport.....	162.400