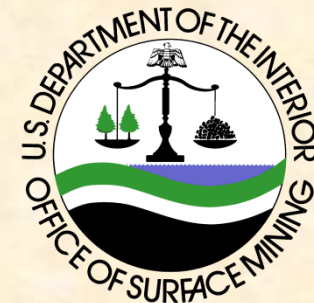


[http://www.doi.gov/bureaus/
blm-osm/Comments.cfm](http://www.doi.gov/bureaus/blm-osm/Comments.cfm)

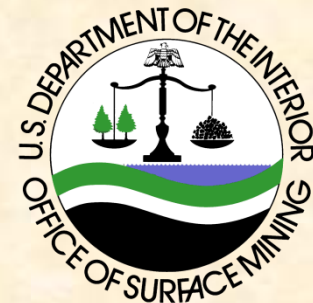


Strengthening Regulatory, Reclamation and Stewardship Responsibilities: Proposed Consolidation of Four Key Duties



Vision Statement

To achieve a successful and productive work environment that aligns the OSM and BLM functions identified in the October 26, 2011 Secretarial Order in an effective and efficient manner.



Vision Statement

OSM will remain an independent regulatory entity consistent with the Surface Mining Control and Reclamation Act, and BLM will preserve its multiple-use mission under the Federal Land and Policy Management Act.



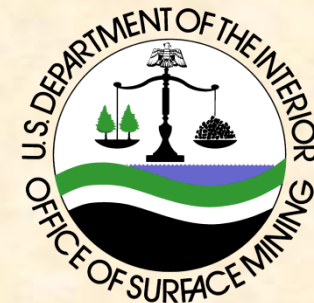
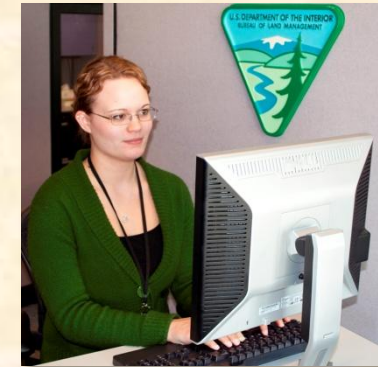
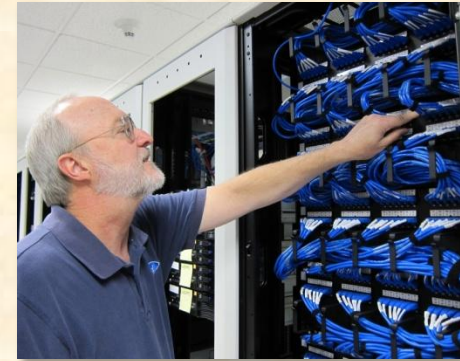
Four Areas of Proposed Consolidation

- Administrative Functions
- Environmental Restoration of Abandoned Mine Lands
- Fee Collections
- Regulation, Inspection and Enforcement and State Program Oversight

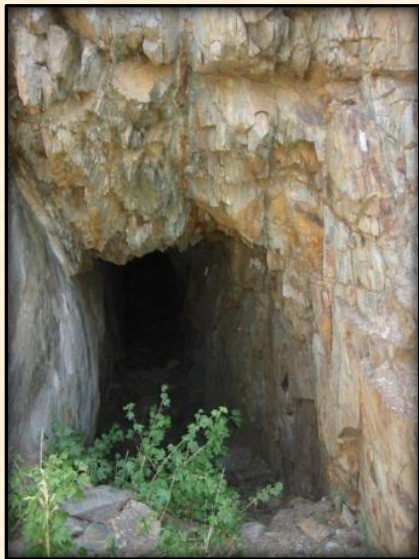


Administrative Functions

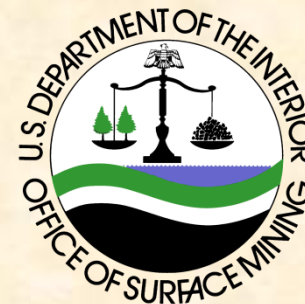
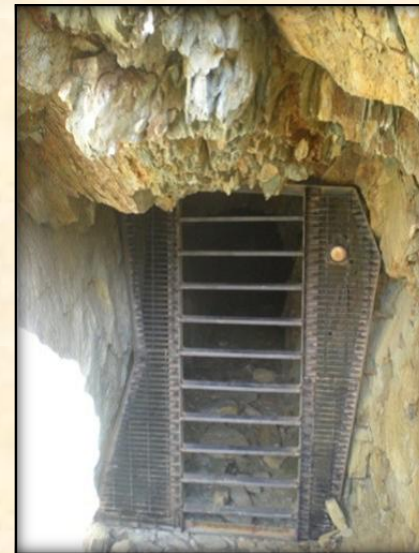
Integration of OSM's administrative functions with the BLM's administrative functions, including, but not limited to, the management of human resources, budget, communications, information, finance, ethics, and acquisition and financial assistance.



Environmental Restoration of Abandoned Mine Land

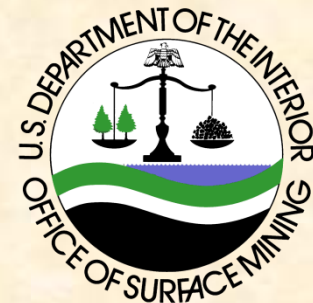


Integration of OSM's abandoned mine lands programs and functions including its State grants-in-aid program and the Abandoned Mine Land Inventory System and the BLM's mine and surface reclamation programs.



Fee Collections

Integration of OSM's coal fee collection and distribution functions with the Office of Natural Resources Revenue functions and programs, which already handles coal, oil and gas and geothermal revenue collection, and distribution functions and programs for the BLM.



Regulation, Inspection and Enforcement and State Program Oversight

Integration of OSM's coal mining regulation, inspection and enforcement programs and functions and the BLM's inspection and enforcement program functions relating to mining.



Comments



[http://www.doi.gov/bureaus/
blm-osm/Comments.cfm](http://www.doi.gov/bureaus/blm-osm/Comments.cfm)

