

M 4.1, 16.1 km (10.0 mi) WNW of Ocotillo, CA

Origin Time: Tue 2012-10-02 08:28:14 UTC (01:28:14 local)

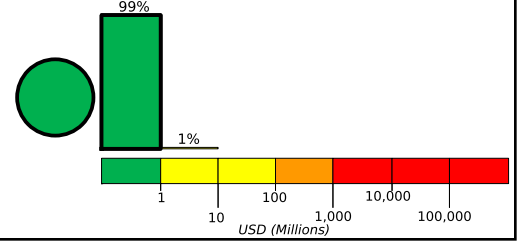
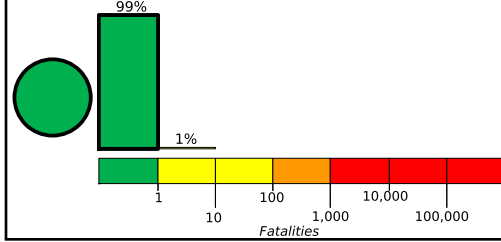
Location: 32.80°N 116.14°W Depth: 10 km

Created: 1 day, 9 hours after earthquake

Estimated Fatalities

Green alert for shaking-related fatalities and economic losses. There is a low likelihood of casualties and damage.

Estimated Economic Losses

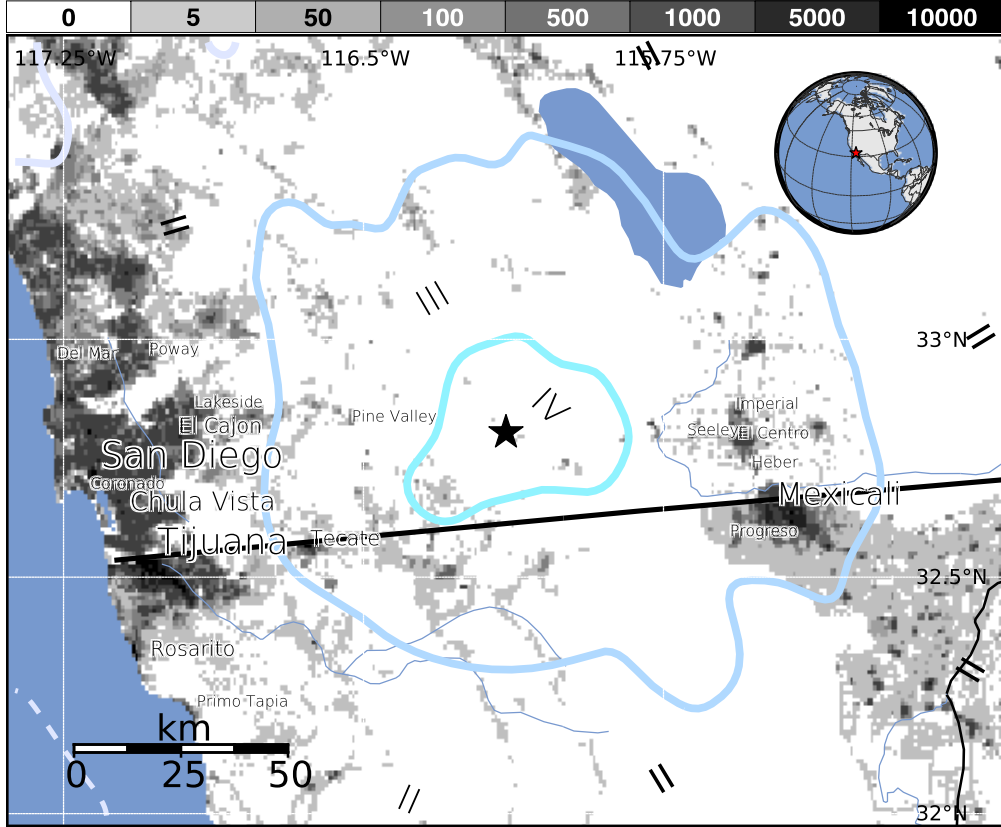


Estimated Population Exposed to Earthquake Shaking

ESTIMATED POPULATION EXPOSURE (k = x1000)	84k*	5,959k	3k	0	0	0	0	0	0	
ESTIMATED MODIFIED MERCALLI INTENSITY	I	II-III	IV	V	VI	VII	VIII	IX	X+	
PERCEIVED SHAKING	Not felt	Weak	Light	Moderate	Strong	Very Strong	Severe	Violent	Extreme	
POTENTIAL DAMAGE	Resistant Structures	none	none	none	V. Light	Light	Moderate	Moderate/Heavy	Heavy	V. Heavy
	Vulnerable Structures	none	none	none	Light	Moderate	Moderate/Heavy	Heavy	V. Heavy	V. Heavy

*Estimated exposure only includes population within the map area.

Population Exposure



Structures:

Overall, the population in this region resides in structures that are highly resistant to earthquake shaking, though some vulnerable structures exist.

Historical Earthquakes (with MMI levels):

Date (UTC)	Dist. (km)	Mag.	Max MMI(#)	Shaking Deaths
1986-07-13	161	5.8	V(9,528k)	0
1991-06-28	234	5.6	VII(8k)	1
1994-01-17	270	6.7	IX(181k)	33

Recent earthquakes in this area have caused secondary hazards such as landslides and liquefaction that might have contributed to losses.

Selected City Exposure

from GeoNames.org

MMI City	Population
III Heber	3k
III Imperial	10k
III Seeley	2k
III El Centro	38k
III Westmorland	2k
III Holtville	5k
III Mexicali	597k
II Tijuana	1,376k
II Chula Vista	213k
II Oceanside	161k
II San Diego	1,223k

bold cities appear on map

(k = x1000)

PAGER content is automatically generated, and only considers losses due to structural damage. Limitations of input data, shaking estimates, and loss models may add uncertainty.

<http://earthquake.usgs.gov/pager>

Event ID: ci15223417