

Appendix H

Exhibit 2

IMMS Stranding Brochure



Marine Mammal Stranding Survey and Response Guide

IMMS will respond to any of the following:

- A dead or alive dolphin or whale
 - A live turtle
 - A live otter
- A dead or alive manatee

For the following animals, IMMS can relay your information to the appropriate authorities:

- Sick or injured sea bird
- Dead stranded turtle

Stranding Hotline



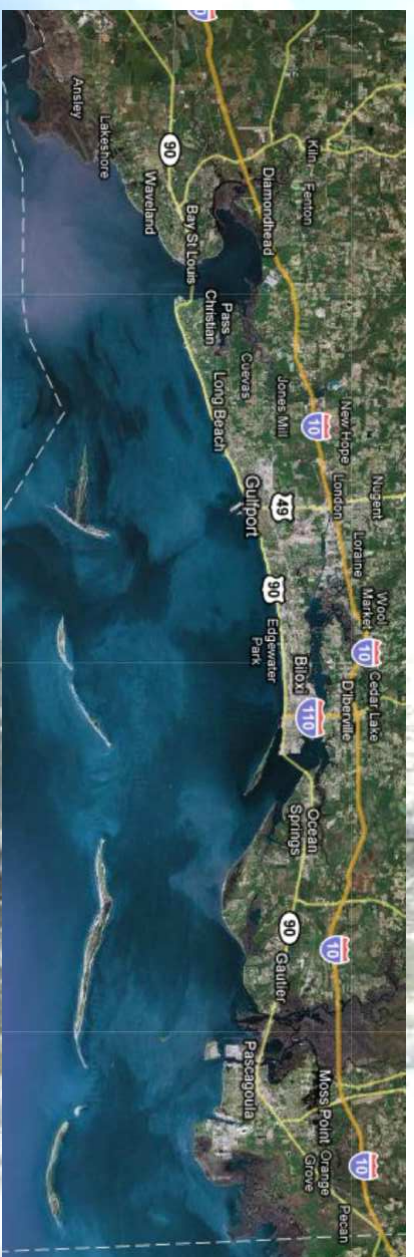
1 (888) SOS - DOLPHIN

(1-888-767-3657)

www.IMMS.org



Gulfport, Mississippi



IMMS Stranding Survey Area

Contact IMMS for an area to survey:
(228) 896-9182, contactus@imms.org

Hancock County
Beaches

Harrison County
Beaches

Jackson County
Beaches

Shorelines of MS
Barrier Islands

Who is IMMS?

The Institute for Marine Mammal Studies (IMMS), located in Gulfport, MS, is a non-profit organization dedicated to public education, conservation and research of marine mammals in the wild and under human care.

What is a stranding?

A stranded animal is one that is unable to return to their natural habitat (stuck on a beach, trapped at low tide, entangled in fishing gear, sick, injured, or dead).



The IMMS rescue team prepares to relocate this young stranded dolphin.



A sea turtle that was rescued after having a fish hook embedded in her mouth.

What is a stranding survey?

IMMS regularly conducts walking surveys of Mississippi shorelines. Harrison, Hancock, and Jackson County beaches are divided into 1-2 mile survey areas. Designated areas are surveyed by volunteers, who then report their findings to IMMS staff upon completion.

Why does IMMS conduct stranding surveys?

- All marine mammals are federally protected. All stranded marine mammals must be reported to the National Marine Fisheries Service.
- With every stranded animal found and reported, IMMS can gain valuable information about the species and any problems it may be incurring.

Where do I look for stranded animals on the beach?

- On the shoreline
- Up in the soft sand where an onlooker may have pulled the animal on shore
- In the shallow water (at least 100 yards out)

IMMS staff responding to a pygmy killer whale stranding in April 2008.



What to look for?

- A stranded dolphin alive OR dead
- Dolphins range in size from 2-10 ft. in length, and small animals are often missed.
- Dolphin carcasses with any degree of decomposition.
- Partial carcasses (Please call the stranding hotline below to obtain assistance with identification)



If you only find a skull, it can still be reported, as long as it can be positively identified as a dolphin.

What to do if you find a stranded animal?

Call the IMMS stranding hotline number
IMMEDIATELY:

1(888)SOS-DOLPHIN
(1-888-767-3657)

- **DO NOT PUSH THE ANIMAL BACK OUT TO SEA!** (the animal stranded for a reason and more than likely needs medical attention)
- Make sure the blowhole on top of the head (which is used for breathing) is clear of any obstruction. Do not allow water to enter its blowhole at any time.
 - Keep onlookers, children, and pets away
 - Be extremely careful around the head and tail. Dolphins are very powerful animals even when their health is compromised.
- Sick animals can carry diseases so please do not handle them without proper instruction.

What does IMMS do with stranded dolphins?

If Alive: IMMS' Dolphin Rescue Team will take the appropriate measures depending on the animal's condition. The ultimate goal is always to release the animal back into the wild if possible.

If Dead: IMMS will collect various tissue samples for analysis and look for signs of injury, pollution, disease, infection, and parasites. Signs of human interaction are also investigated if present.

IMMS staff examining a newborn dolphin stranding.



Why is studying dolphins important?

There are about 75,000 bottlenose dolphins in the Gulf of Mexico. Approximately 2,000 of them reside in the Mississippi Sound. Dolphins, like humans, are at the top of the food chain, which makes them biological indicators of their environment. Because humans and dolphins share habitat and food supply, changes in the ecosystem that impact dolphins also affect humans.



IMMS's dolphin rescue team carries a 600 lb offshore bottlenose dolphin that was stranded in shallow water.

How can I help with stranding surveys?

If you would like to help IMMS with stranding surveys, please call (228) 896-9182 or email contactus@imms.org.