



Indian Health Service 2012 NATIONAL BEHAVIORAL HEALTH CONFERENCE

Welcome

“What's going on?” - Designing
Community Surveys

Monica Henry



Mobilizing Partnerships to Promote Wellness

House Keeping

- Please be sure to sign in and out on the Sign In Sheets located near the entrance to this room.
- Please complete the evaluation at the end of this presentation.
- For more information on Continuing Education Units (CEUs), please visit the Registration Desk

Comfort Room

- To promote wellness and self-care, a Comfort Room is available in Atrium Room 8 for your use.
- If you need further assistance, please visit the Indian Health Service Division of Behavioral Health booth.

Step One - Prepare

- Decide what the goal or purpose is of the survey – what information are you trying to get and why...what will you do with it?
- Who will you include in the survey ...do you need more than one type of survey?
- Can you develop the survey on your own or do you want to hire a developer?
- Which individuals or organizations in your community might be of assistance – partnerships?

Step Two – Research & Write

- Write, Review, Revamp.....and repeat....
 - Research and review other surveys – you don't need to reinvent the wheel, at least not entirely.
 - Use “definitions” and examples of various forms of abuse to help develop your questions – especially if you can't find surveys out there that really express what you are looking for
 - Have a variety of individuals review your surveys – content, format, grammar, clarity, etc. For example: Font size increased so elders can read it; Changed the format so it is more readable; Specific definitions of terms – for example, romantic relationship, “caregiver”

Step Three - Approval

- Do you need approval to conduct your survey? Tribal Council, School Board, Health Clinic, Parental Consent? Do you need to enter into MOUs/MOAs? Do you need letters of approval?
- Do you need to submit your survey to an institutional review board (IRB)? Who will do this?

What is an IRB & why should I care?

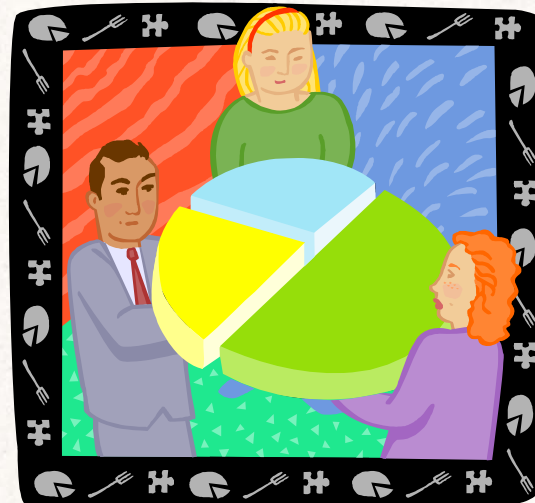
- a committee that has been formally designated to approve, monitor, and review biomedical and behavioral research involving humans
- The purpose of an IRB review is to assure that appropriate steps are taken to protect the rights and welfare of humans participating as subjects in a research study.
- Research requires IRB; Program Evaluation may or may not require IRB.
- If Research (and perhaps program evaluation) is under I.H.S. Jurisdiction, then IRB is usually required (ask, of course)
- If the evaluator for a program evaluation or quality improvement study is a university employee, approval by the university I.R.B. university may be required, even if the study is program evaluation or quality improvement (again, ask)

Step Four - Distribution

- How will you distribute your surveys – what format(s) will you use & Locations? Will you offer incentives? How do you prevent duplication?
 - Hard copy
 - Online (Survey Monkey?)
 - Community events, Classroom, Health Clinic, Bulk Mailing, Door-to-Door, Seniors Program, etc
 - Incentives: Gift Cards & Drawings? Other?
 - Consent forms (separate from survey – confidentiality)

Step Five - Analysis

- Who will review the information and how will you compile the results?
- What will you do with this information? How can it be used?



Questions





Contact Information

Monica Henry

*Quileute Tribe New Beginnings Program Manager and
Victim Advocate*

(360) 374-5110

monica.henry@quileutenation.org





Crisis Hotline Numbers

Suicide Prevention Lifeline Number:

- 1-800-273-TALK (8255)

National Domestic Violence Hotline:

- 1-800-799-SAFE (7233) or TTY 1-800-787-3224

National Child Abuse Hotline:

- 1-800-4-A-CHILD

Sexual Assault Hotline:

- 1-800-262-9800
- 