

Buccaneer, A General Dynamics Company

February 13, 2012

CMMI/Bundled Payments Informal Presentation

Presenters:

Christopher Alleman, PMP – Program Manager

Susie Joe – Sr. Analytics Manager



BPCI Data Webinars

Date	Webinar Content	Presented By
February 13, 2012	Technical Aspects of Data Delivery and File Processing	Buccaneer
February 15, 2012	Understanding the Limited Data Set Denominator File	ResDAC
February 16, 2012	Understanding the Limited Data Set Utilization Files	ResDAC
February 17, 2012	Payment Variables Useful for Costing Bundled Payment Initiative Services	ResDAC

All webinars will take place from 12:30p – 1:45p EST

*Slides and webcast posted at <http://innovations.cms.gov/>



Buccaneer: Who We Are

- ◉ Wholly owned subsidiary of General Dynamics
- ◉ Specialize in information technology services
- ◉ Expertise in a wide-ranging set of IT disciplines
- ◉ Longstanding relationships with CMS, DoD, FDA
 - Buccaneer holds the Chronic Condition Data Warehouse (CCW) contract with CMS



What We Do

- ⊙ Maintain Chronic Condition Data Warehouse
 - Relational database containing CMS data
 - 100 % data 1999-forward
 - Medicare claims, enrollment, assessments, Part D
 - Medicaid enrollment, services
- ⊙ Support CMS staff
- ⊙ Construct analytic data extracts for researchers
- ⊙ Provide training resources for data users

Overview of Presentation

- ◉ Data delivery
- ◉ Data contents
- ◉ File access
- ◉ Initial file processing
- ◉ Help resources



Data Delivery



Preparing to Receive the Data

◎ Capacity planning email notifications

- Sent to Project Contacts (and “Ship To” recipients, as applicable), including:
 - DUA Numbers
 - Request IDs
 - Approved HRCs
 - File to determine HRC sizes is available on “Bundled Payments Learning and Resources Area”:

<http://innovations.cms.gov/initiatives/Bundled-Payments/index.html>



Receiving the Data

⊙ Data shipment

- USB hard drives
- Shipped to recipient listed in original application's "Shipping Information" section
- Delivered via FedEx
 - On or around February 28, 2012



Receiving the Data

- ⦿ If one “Ship To” recipient is listed to receive data for multiple entities:
 - All HRCs will be shipped on one hard drive, if space allows
 - When the HRCs requested were duplicates, most have been re-categorized as “re-use” DUAs

Data Contents



Hard Drive Contents



Extract Documentation

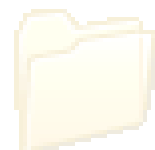


resDUA#_reqXXXX

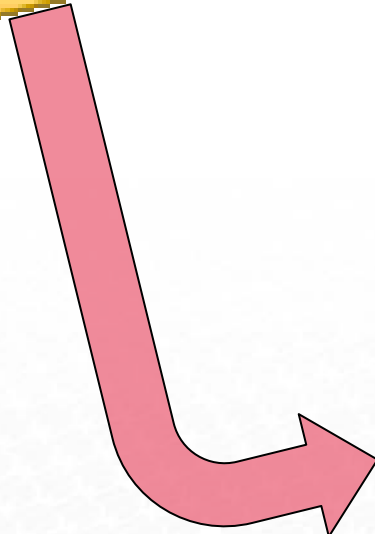
Hard Drive Contents: Documentation



Extract Documentation

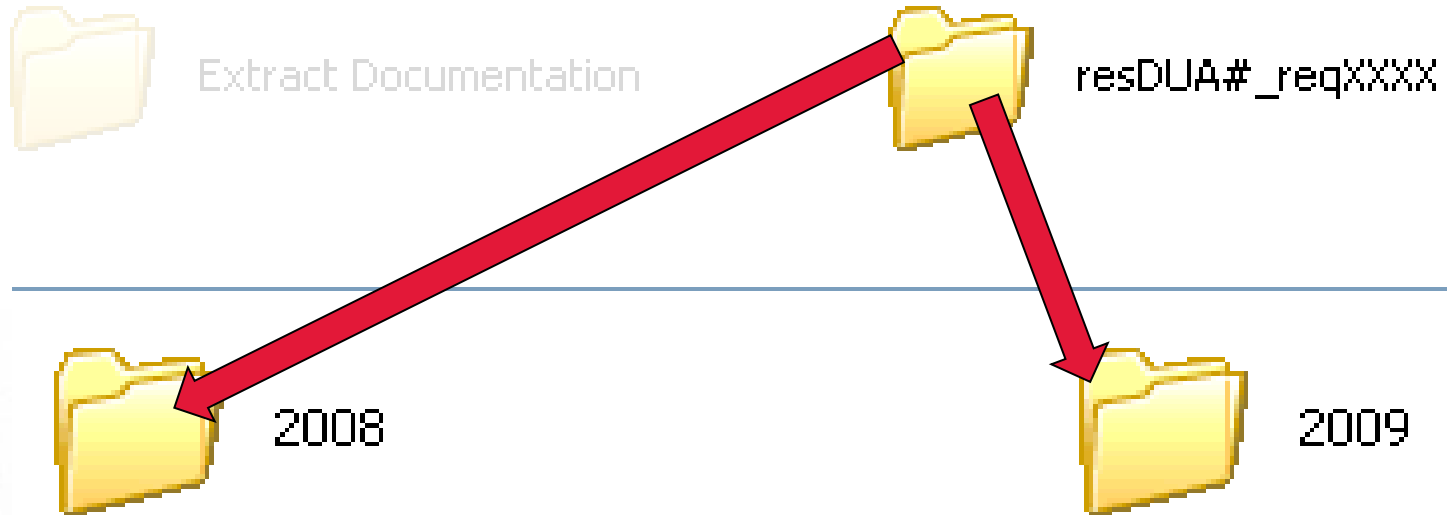


resDUA#_reqXXXX



- Bundled_Paymnts_File_Layout
- Carrier
- CCW_Decryption_Instructions_Bundled_Payments
- Denominator
- DME
- HHA
- Inpatient
- Outpatient
- ShippingPackageInsert
- SNF
- TIPS Document_20111104

Hard Drive Contents: Data



Hard Drive Contents: Data

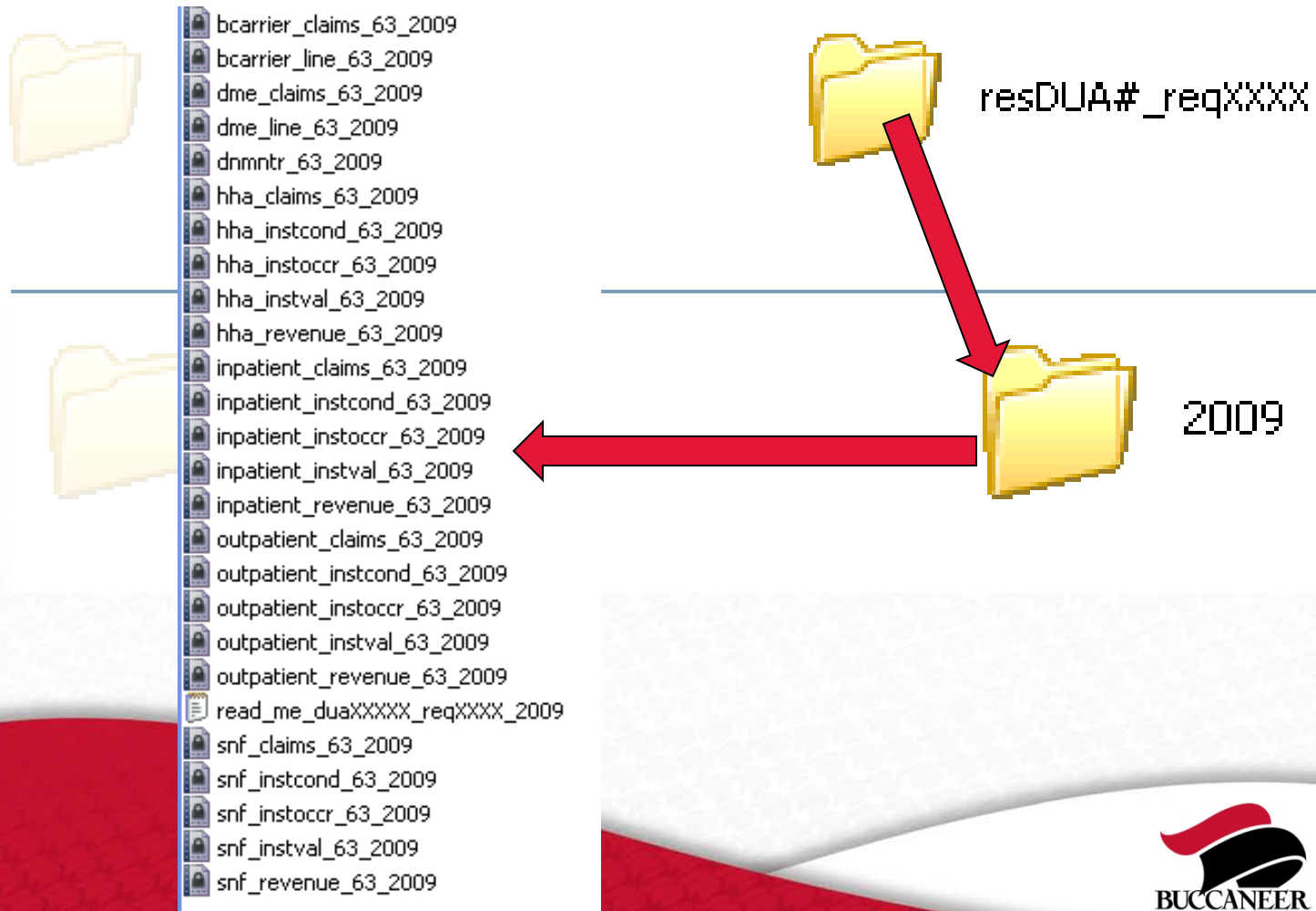
Each yearly folder (2008/2009) contains 25 Self-Decrypting Archive (SDA) files named according to this convention:

<Extract>_<HRC#>_<Year>.exe

The next slide shows the example of HRC 63 for 2009



Hard Drive Contents



Hard Drive Contents: Data

⦿ Institutional (Part A) files

For each institution type:	These files are provided:
Inpatient hospital Skilled nursing facility Outpatient hospital Home health agency	Base level claims Revenue center level claims Occurrence Condition Value

Hard Drive Contents: Data

⦿ Non-Institutional (Part B) files

For each claim type:	These files are provided:
Carrier Durable medical equipment	Base level claims Line item level claims

File Access



Working with SDAs

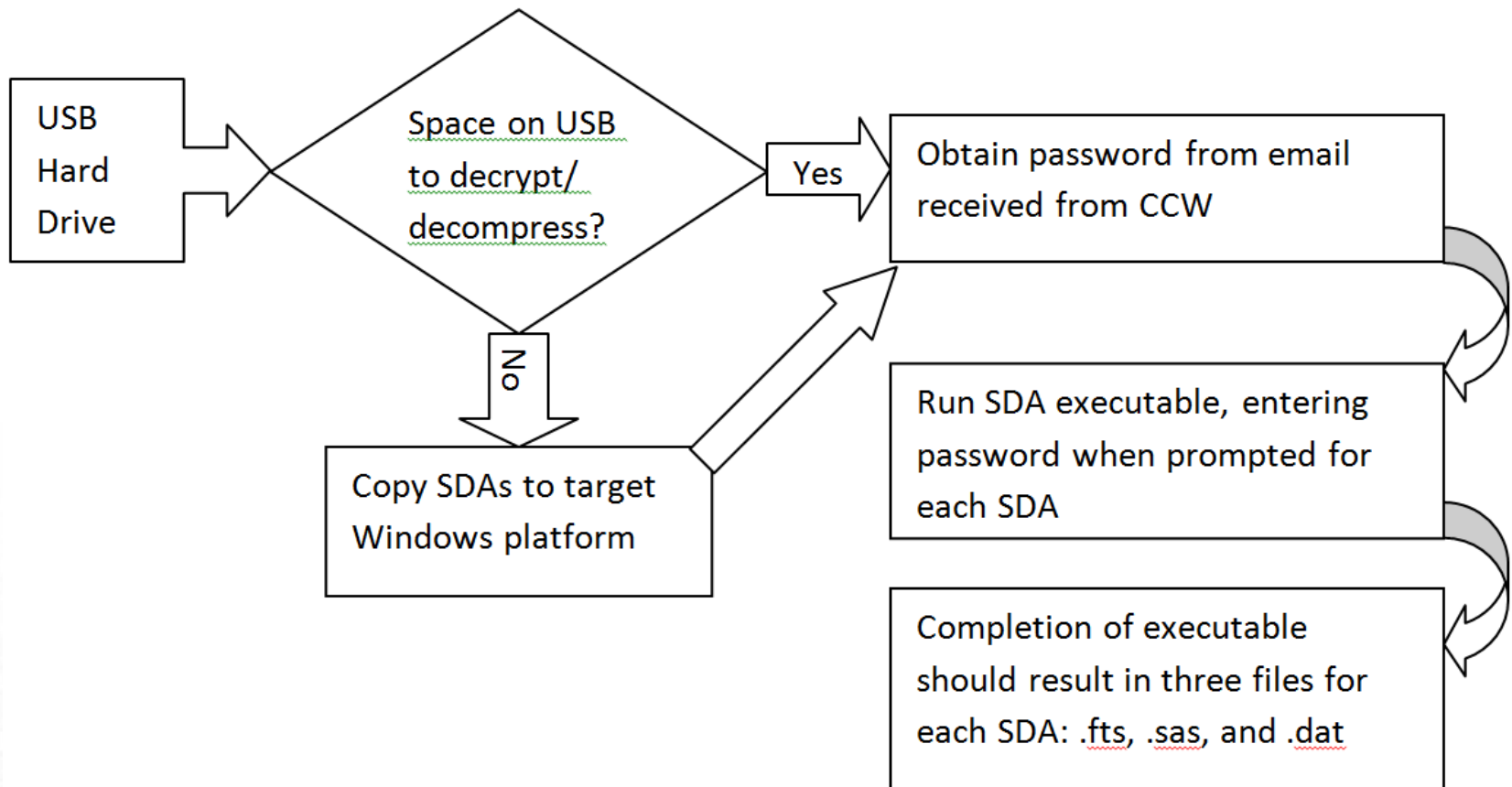
- Each SDA contains three files:

Type	Naming Convention	Example
File Transfer Summary (FTS)	<filetype>_##_YYYY.fts	snf_claims_63_2008.fts
SAS read statements	<filetype>_##_YYYY_read.sas	snf_claims_63_2008_read.sas
Data	<filetype>_##_YYYY.dat	snf_claims_63_2008.dat

Accessing Files in SDAs

- SDAs are compressed and encrypted
- They must be decrypted and uncompressed prior to use
- Refer to list of HRC sizes for necessary disk space

File Access Process



Initial File Processing



To Begin Processing Data

- To join claims files to the denominator file, use the variable DESY_SORT_KEY
- The variable CLAIM_NO has been added across multiple records within same claim type and year

Help Resources



Submit technical help
requests and questions to:
CMSdata@vangent.com

Please reference ***Bundled Payments*** in the subject line

Please include ***DUA Number*** and ***Request ID***

