

- Support to Army 2020 – provides analysis of potential, future Army organizational and mission constructs
- Mission Command Force Modernization Proponent – determines mission command requirements and develops integrated capabilities for the operating force
- Agile Process/NIE – “fast-tracks” innovative solutions from government and industry to meet near-term mission command materiel requirements. Gets new equipment in the hands of Soldiers to ensure it works correctly before fielding begins
- Doctrine 2015 – streamlines the number/length of current doctrinal manuals and leverages current technologies, such as the MilWiki platform, to inject into our doctrine fresh, contemporary and proven knowledge by Soldiers in the field
- Improve Mission Command Initiative (IMCI) – leads initiatives to improve command posts, integrate mission command systems, and increase mission command training and education effectiveness
- Army Lessons Learned Forum – facilitates resolution of Army-wide issues and problems through collaboration with senior leaders across the Army
- COIN Seminars – provides counterinsurgency training tailored for deploying brigades’ needs and specific operating environment
- Support to Security Cooperation – provides analytic support for emerging capabilities such as Regionally Aligned Forces and Building Partner Capacity
- Irregular Warfare – integrates and synchronizes support for special operations forces – conventional force (SOF–CF) interdependence
- Army cyber integration – partners with ARCYBER to ensure mission command and cyber capability development efforts are coordinated and integrated

“Mission Command is not a mechanical process that the commander follows blindly. Instead, it is a continual cognitive effort to understand, to adapt, and to direct effectively the achievement of intent. Balancing the art of command with the science of control, the commander positions himself as needed to best accomplish the mission. Mission Command challenges commanders to cultivate a bias for action in their subordinates, develop mutual trust and understanding, and exercise moral nerve and restraint.”

GEN Martin Dempsey, Chairman, Joint Chiefs of Staff
Mission Command White Paper, 3 Apr 11

Mission Command is defined as the ability for agile, adaptive leaders and organizations to execute disciplined initiative within the commander's intent as part of unified action in a complex and ambiguous environment.

GEN Robert Cone, Commanding General, TRADOC
Fires magazine, 1 Jul 11

The MC CoE needs your engagement and help to be successful - you are invited to participate

[mccoewebmaster
\(usarmy.leavenworth.tradoc.mbx.mccoewebmaster@mail.mil\)](mailto:mccoewebmaster@usarmy.leavenworth.tradoc.mbx.mccoewebmaster@mail.mil)

913-684-8525
415 Sherman Avenue (Bldg 52)
Ft Leavenworth, KS 66027

Public Page Access

MC CoE: <http://mccoey.army.mil>
CADD: <http://usacac.army.mil/cac2/CADD>
CALL: <http://usacac.army.mil/cac2/CALL>
CDID: <http://usacac.army.mil/cac2/CDID>
AIWFC: <http://usacac.army.mil/cac2/AIWFC>

MISSION COMMAND

Center of Excellence



Enabling Commanders and Leaders

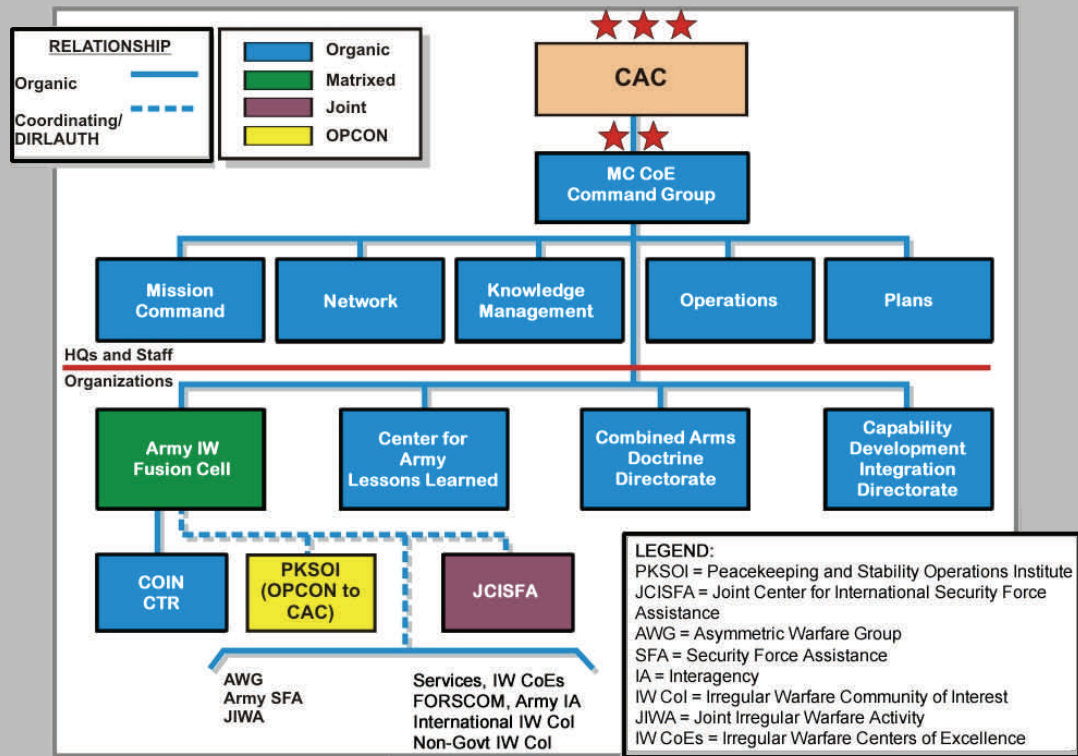


Mission:

The MC CoE develops and integrates Mission Command DOTMLPF requirements and solutions across the six warfighting functions in order to prepare commanders and leaders to successfully conduct ULO.

On December 16, 2010, Department of the Army and the Training and Doctrine Command established the Mission Command Center of Excellence (MC CoE) to integrate mission command DOTMLPF solutions at all levels of command, from Army Service Component Commands to platoons.

The MC CoE, similar to how the commander applies combat power through the warfighting functions during operations, integrates and synchronizes mission command and network capability development efforts across the Centers of Excellence (CoEs)/warfighting functions. The MC CoE is essentially the operating force commanders' representative and overarching tie to the generating force.



MC CoE provides a balanced, comprehensive approach to developing capabilities that advance the art and science of mission command. MC CoE operates from a command post using mission command systems and employs a battle rhythm that uses human networks and a virtual collaborative environment to increase effectiveness.

- *Mission Command Branch* assists the director in leading mission command DOTMLPF capabilities development among stakeholders in order to support and prepare Army leaders for success in Unified Land Operations.
- *Network Integration Branch* plans, coordinates, synchronizes, and manages all activities pertaining to the 'science' aspects of mission command, ensuring holistic, integrated, and synchronized capability development from inception through employment.
- *Knowledge Management, Operations and Plans Branches* provide leading-edge support and capabilities in these functional areas.
- *Combined Arms Doctrine Directorate (CADD)* develops relevant and responsive doctrine and operational information.
- *Center for Army Lessons Learned (CALL)* collects, analyzes, disseminates and facilitates integration of Army and JIIM lessons learned for the operating forces, the generating force and all aspects of capability development.
- *Capability Development Integration Directorate (CDID)* develops resource-informed, integration-focused, outcome based solutions that enhance current forces, supplement future force and leverage existing joint capabilities across the Army.
- *Army Irregular Warfare Fusion Cell* assesses, integrates, coordinates, and synchronizes irregular warfare activities, initiatives, and capabilities across the US Army.

