

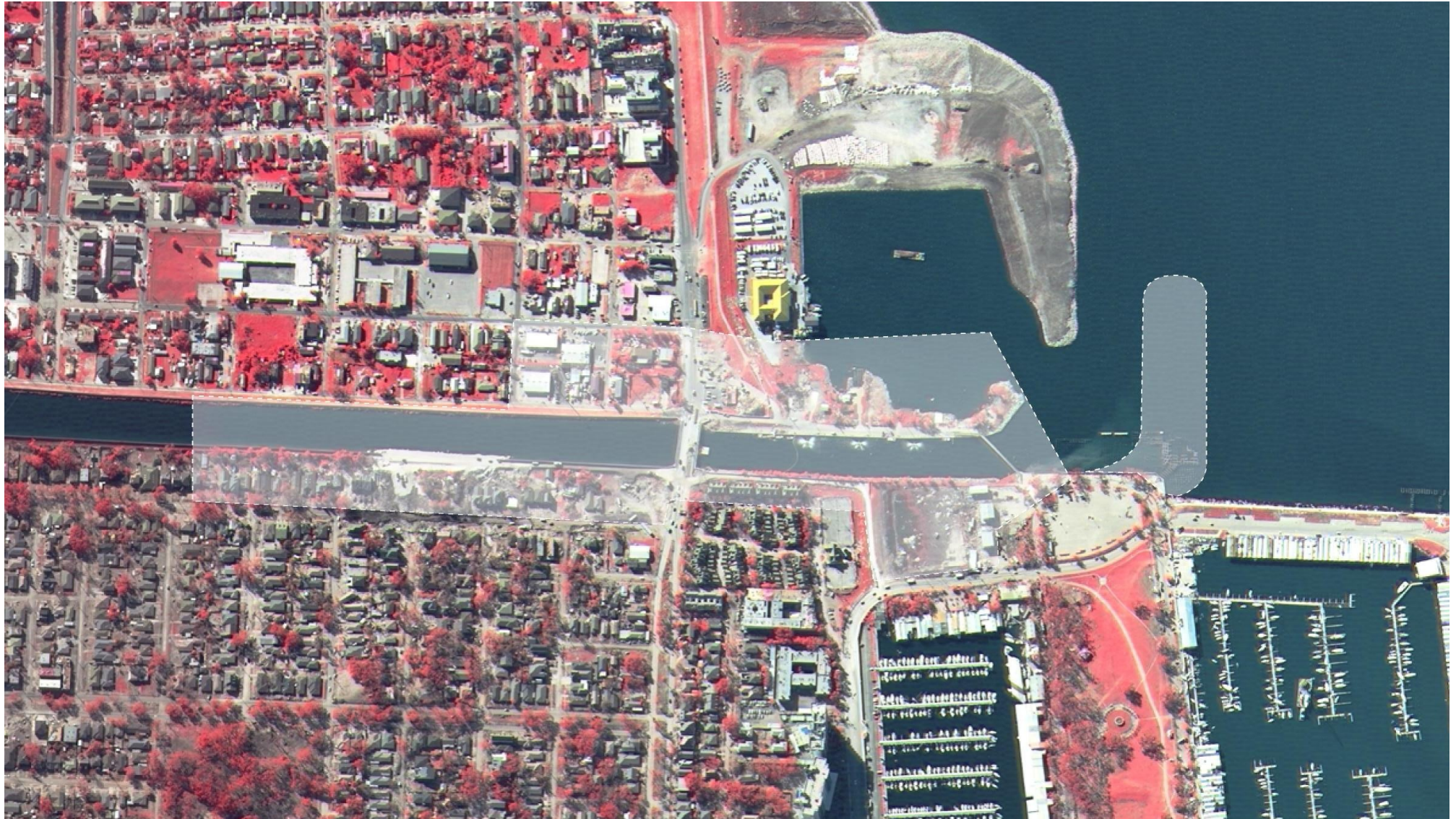
Purpose and Need

To protect the City of New Orleans and Jefferson Parish from storm surge-induced flooding through the 17th Street, Orleans Avenue, and London Avenue Canals, while not impeding the ability to remove stormwater from the city.

Alternatives

- 1) No Action**
- 2) Elevate homes and businesses according to FEMA guidelines**
- 3) Pontchartrain Barrier System**
- 4) Improve Parallel Protection**
- 5) Canal Closure and Pumps (locations shown here)**

Range of Possible Permanent Pump Station Locations 17th Street Canal

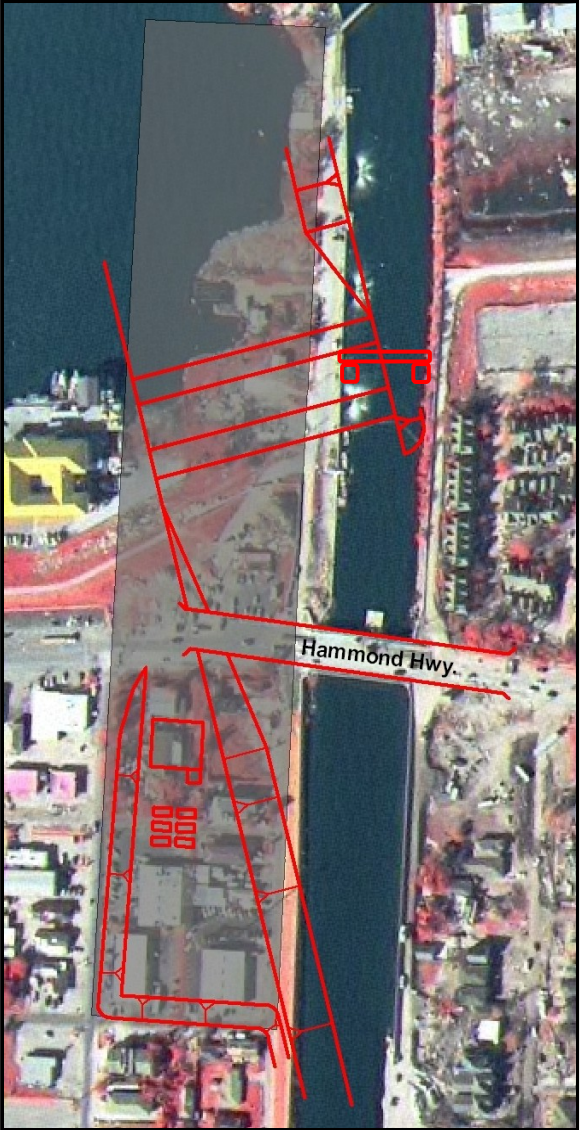


17th Street Canal Conceptual Alternative Site Locations

Alternative A



Alternative B



Alternative C

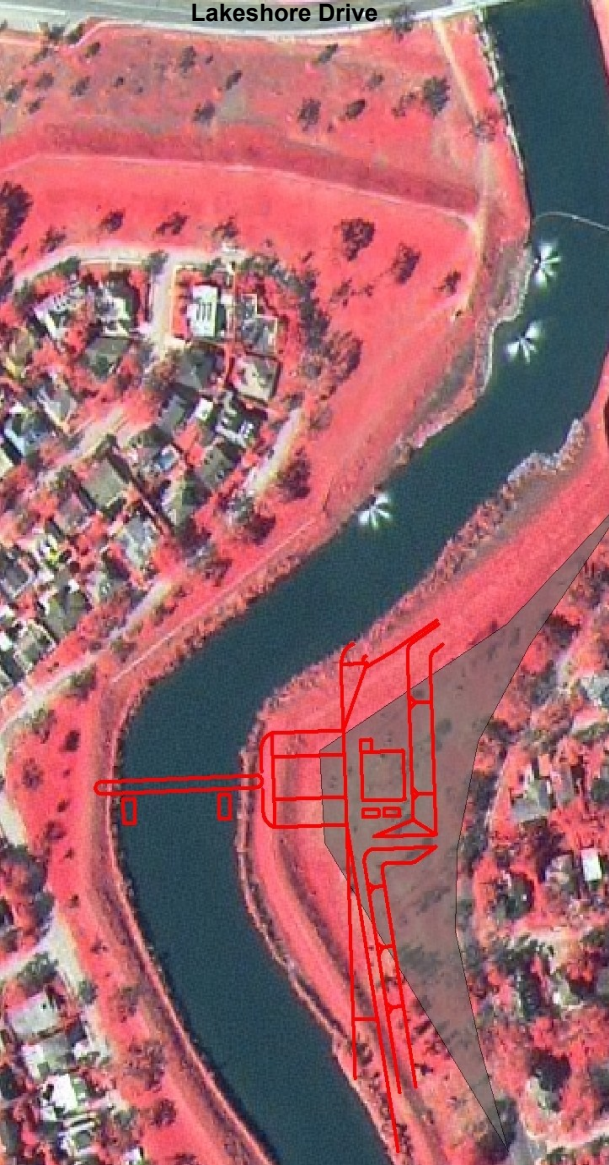


Range of Possible Permanent Pump Station Locations Orleans Avenue Canal



Orleans Avenue Canal Conceptual Alternative Site Locations

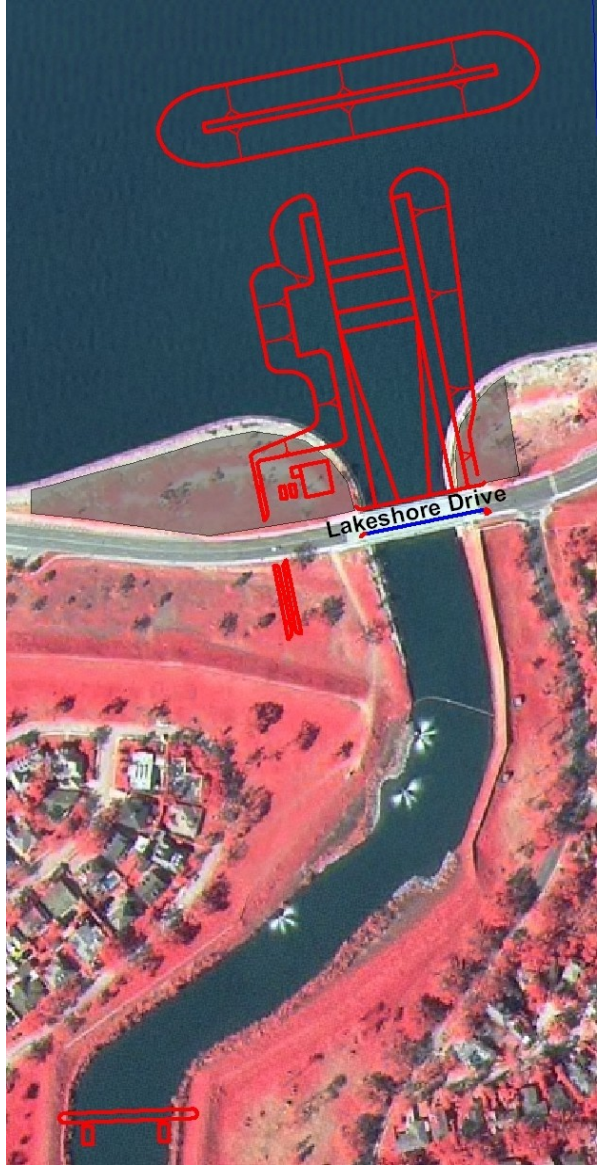
Alternative A



Alternative B



Alternative C

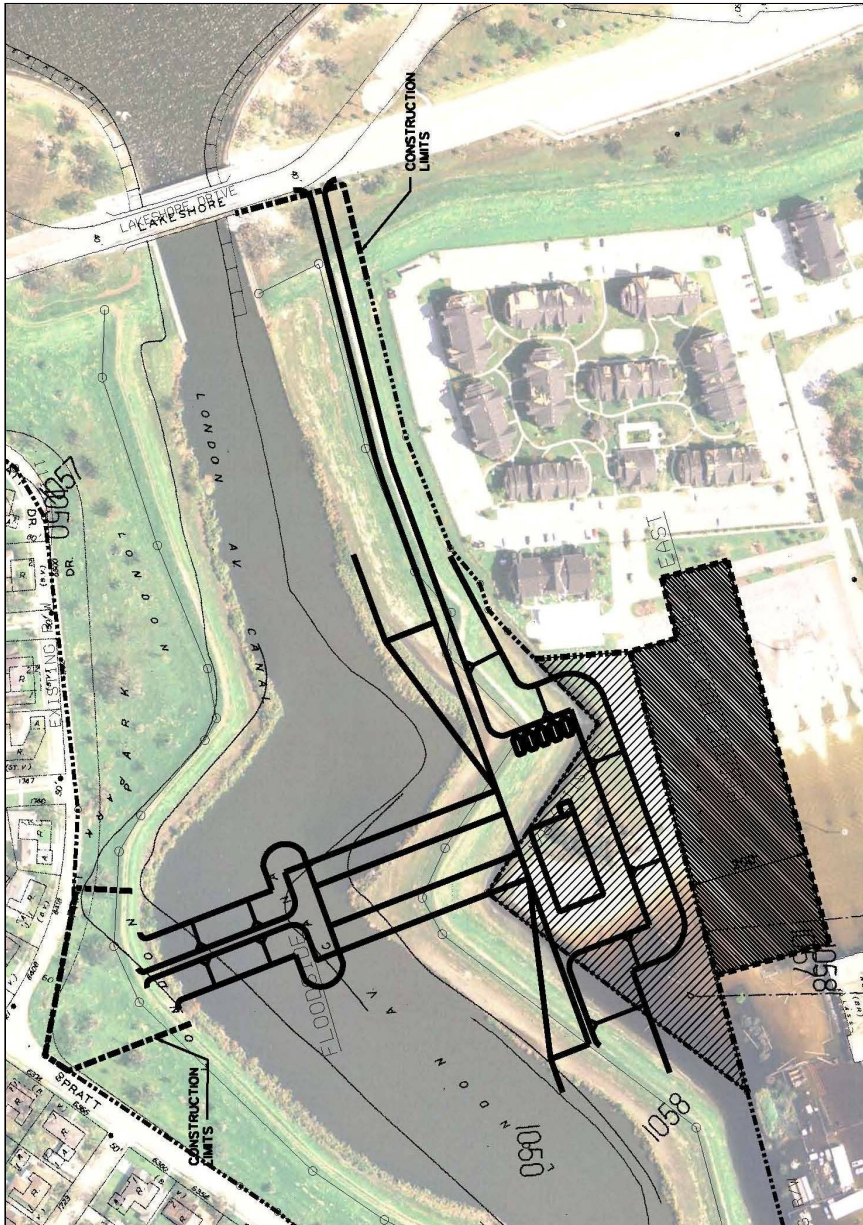


Range of Possible Permanent Pump Station Locations London Avenue Canal

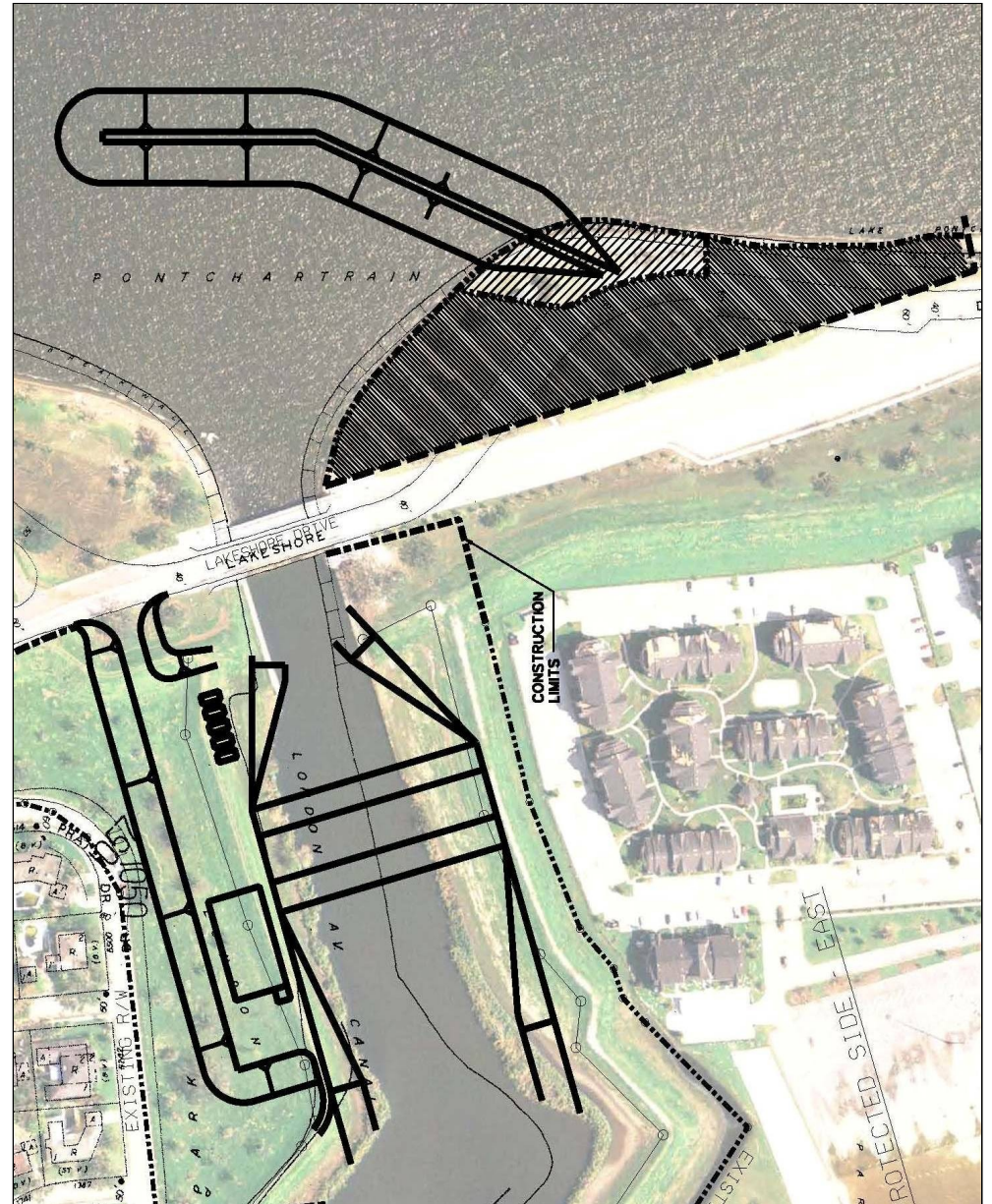


London Avenue Canal Conceptual Alternative Site Locations

Alternative A

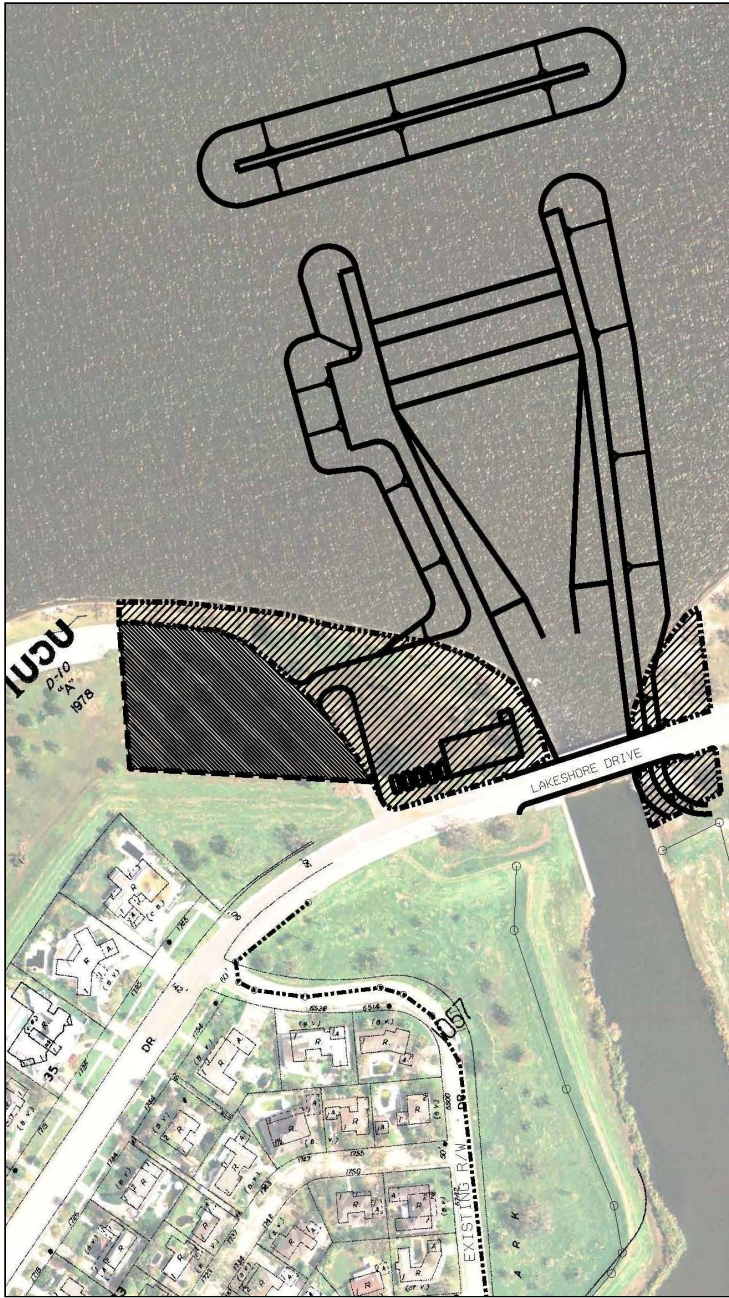


Alternative B



London Avenue Canal Conceptual Alternative Site Locations

Alternative C



Alternative D

