

# *Hurricane Protection System Borrow*

## 👉 Lake Pontchartrain & Vicinity Project

- **New Orleans East: 12,300,000 cy**
- **New Orleans Metro: 1,300,000 cy**
- **Jefferson/St. Charles: 15,700,000 cy**
- **St. Bernard Parish: 28,400,000 cy**

## 👉 West Bank & Vicinity Project

- **Belle Chasse: 4,700,000 cy**
- **Gretna-Algiers: 3,500,000 cy**
- **Harvey-Westwego: 12,900,000 cy**
- **Plaquemines Parish: 24,000,000 cy**

## 👉 Other Projects

- **New Orleans to Venice, Larose to Golden Meadow, Grand Isle non-Federal, Plaquemines Parish non-Federal - 52,287,000 cy**

*Current estimates indicate over 100 million cubic yards are needed for the HPS*



IER 18 – Government Furnished Borrow  
Public Review Completed:  
Addendum Public Review : 1/10/08 to 2/11/08  
St. Charles Parish  
Bonnet Carre North  
Jefferson Parish West Bank  
Churchill Farms  
Westbank Site G  
New Orleans East  
Maynard  
Cummins North  
St. Bernard Parish  
Dockville  
910 Bayou Road  
1418.1420 Bayou Road  
1572 Bayou Road  
4001 Florissant Highway  
Plaquemines Parish  
Belle Chasse  
Triumph

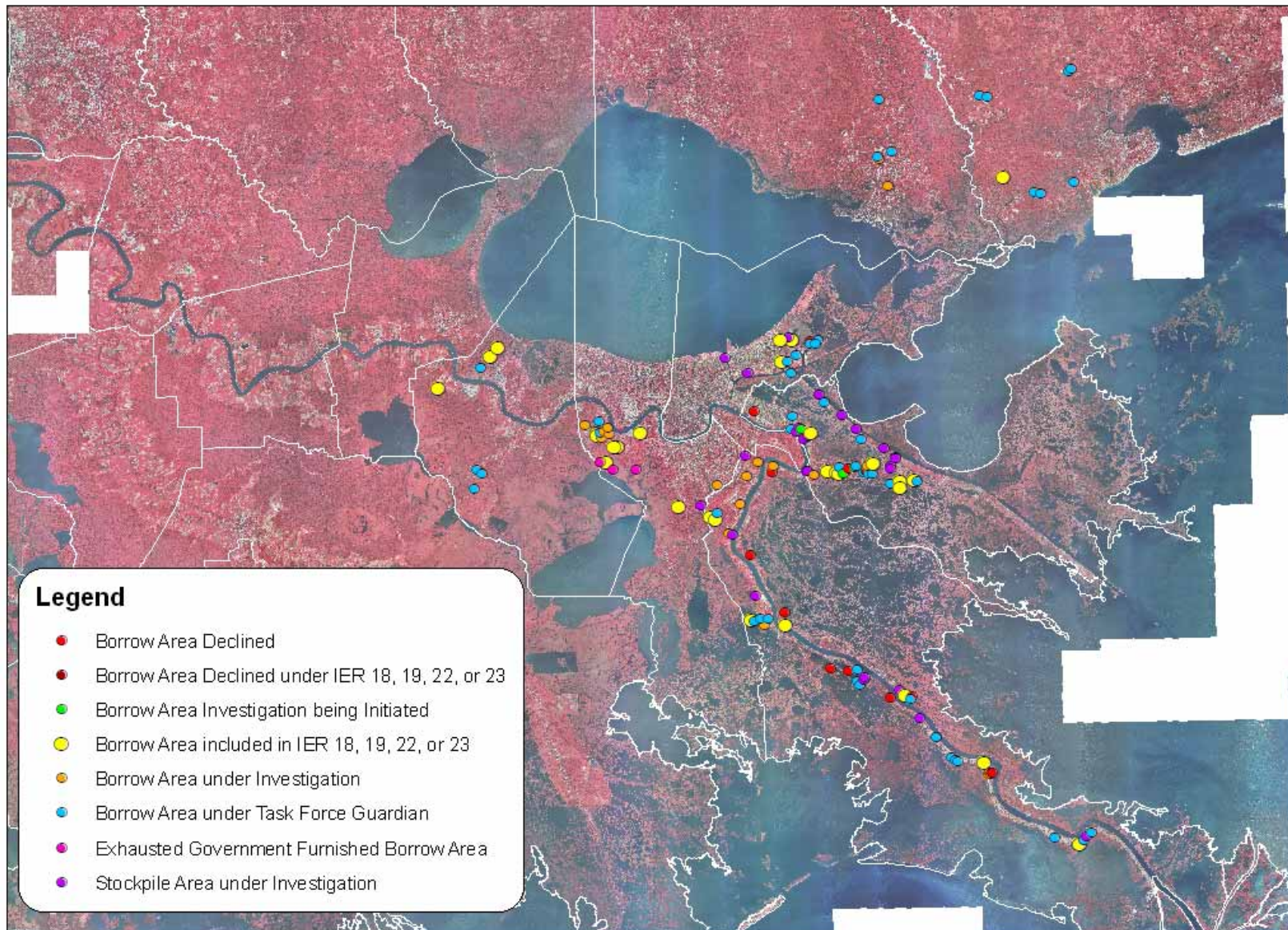
IER 22 – Government Furnished Borrow  
Tentative Public Review: March 08  
6 sites identified for investigation  
Plaquemines Parish  
Brad Buras  
Chauvin  
Tabony  
Jefferson Parish  
Westbank F  
Westbank I  
Westbank N

IER 24 – Borrow Stockpile Sites  
Tentative Public Review: 08  
22 Sites identified for investigation in St. Bernard, Plaquemines, and Orleans  
Parishes

IER 19 – Pre-Approved Government Furnished Borrow  
Public Review Completed:  
Addendum Public Review : 1/10/08 to 2/11/08  
Iberville Parish  
St. Gabriel  
Jefferson Parish West Bank  
River Birch Phase 1 and 2  
New Orleans East  
Eastover  
Mississippi  
Pearlington  
St. Bernard Parish  
Gatien Navy  
Sylvia Guillot  
DK Aggregates  
Plaquemines Parish  
Kimble #2

IER 23 – Pre-Approved Government Furnished Borrow  
Tentative Public Review March 08  
4 sites identified for investigation  
St. Bernard Parish  
1025 Florissant Hwy.  
St. Charles Parish  
3C Riverside  
Plaquemines Parish  
Myrtle Grove  
Mississippi  
Pearlington Dirt Phase 2

# Investigated Borrow Sites – System Wide

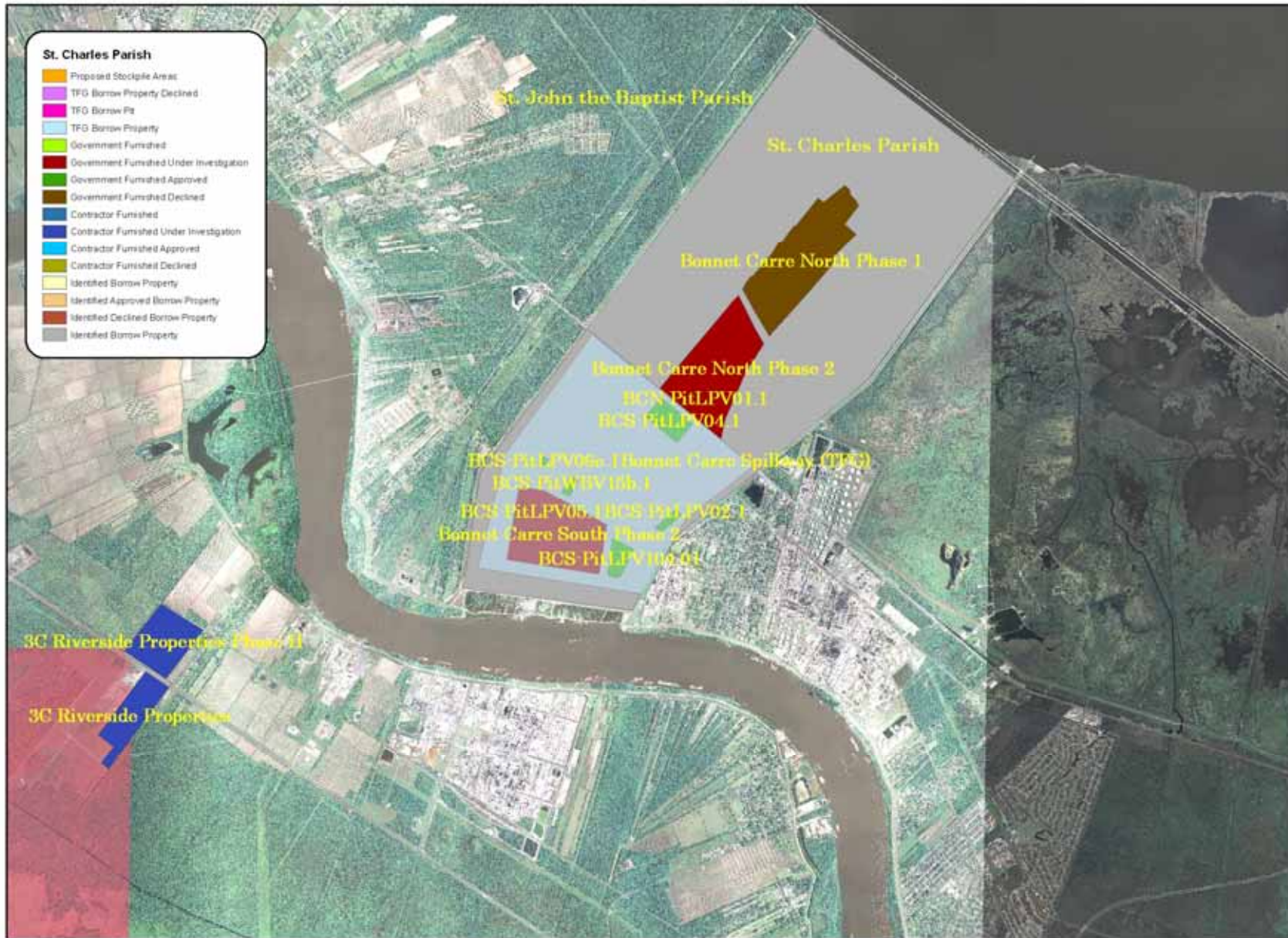


17 JANUARY 2008



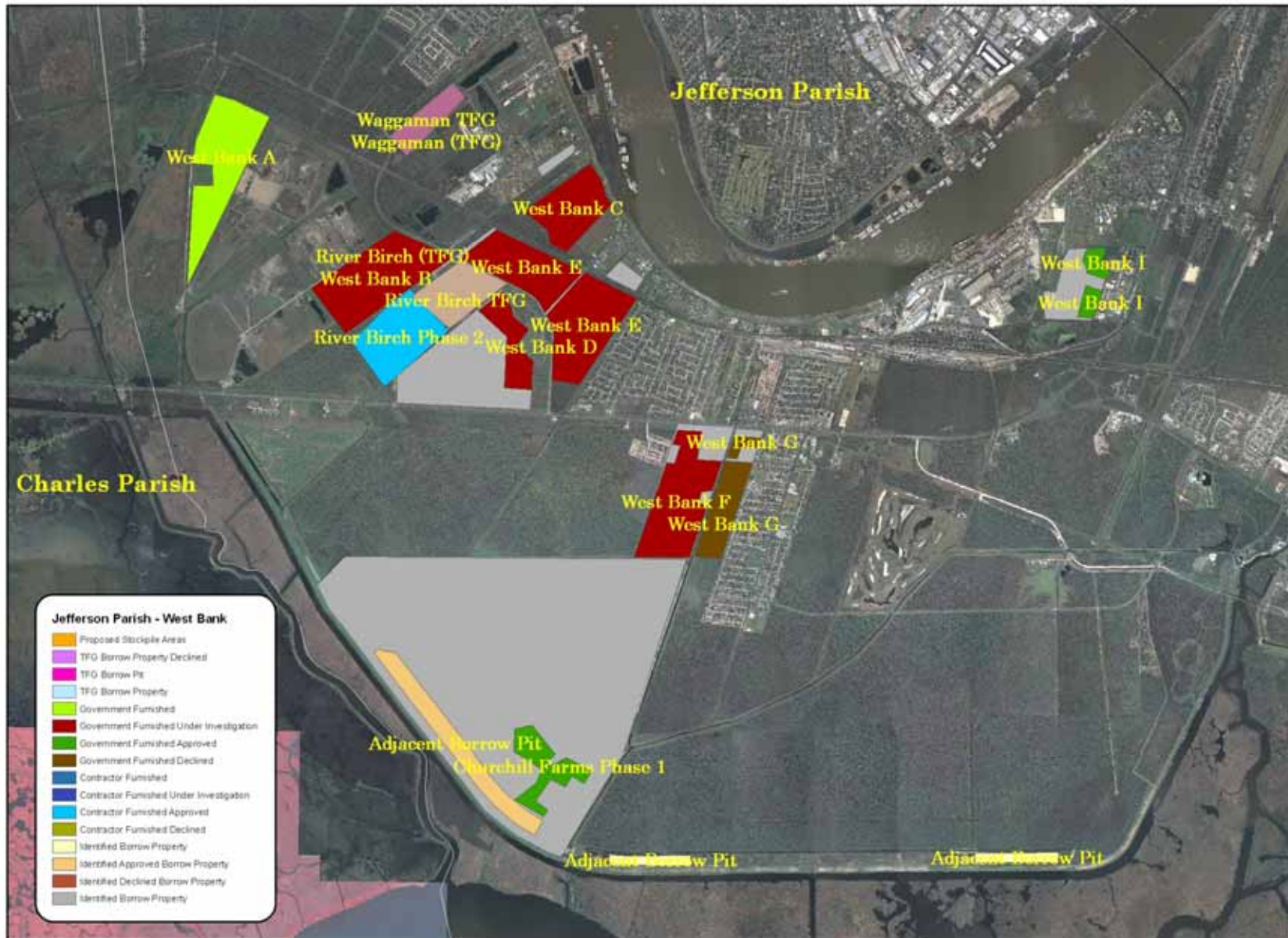


# Bonnet Carre Spillway, St. Charles Parish





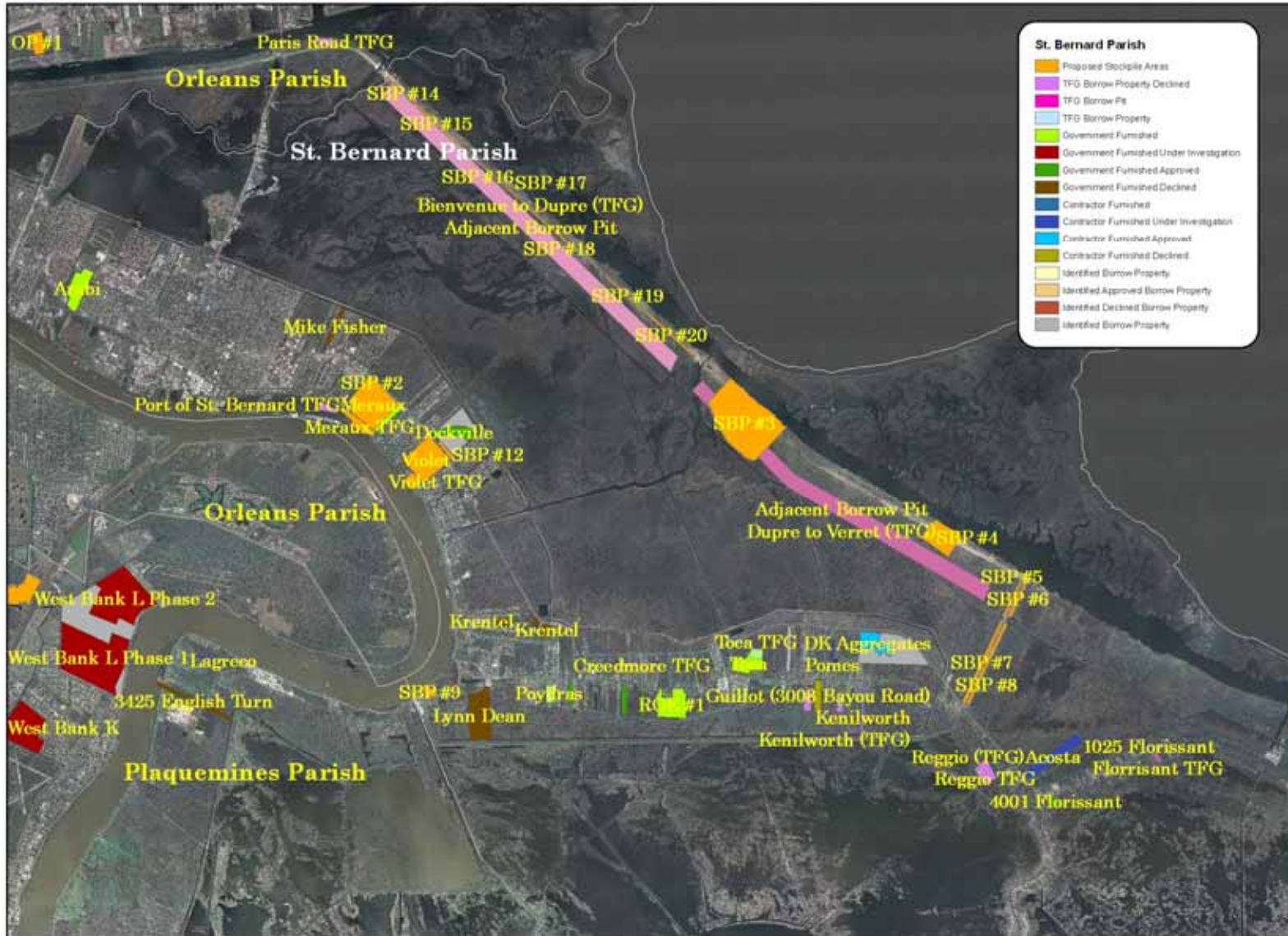
# West Bank, Jefferson Parish





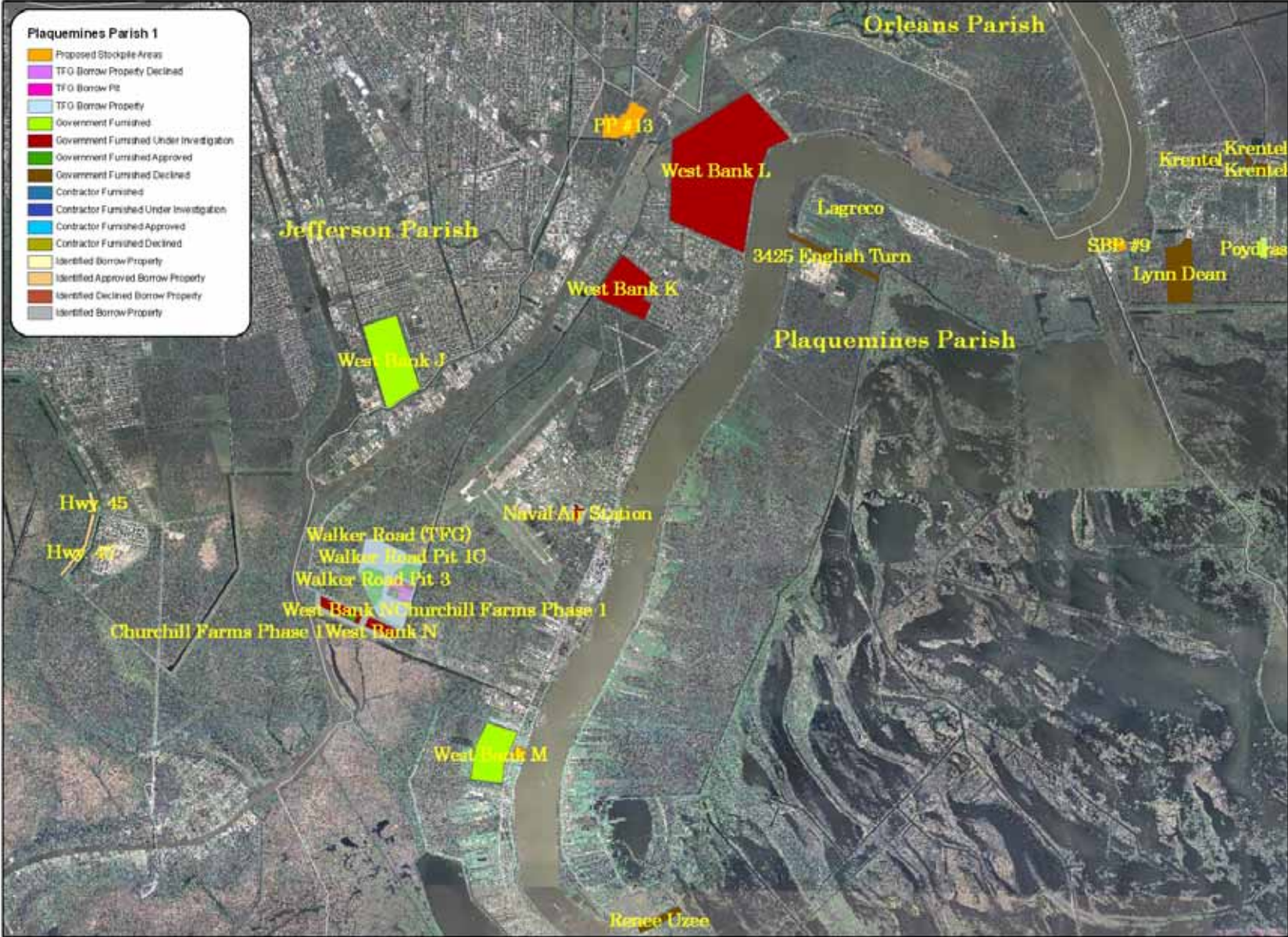


# St. Bernard Parish



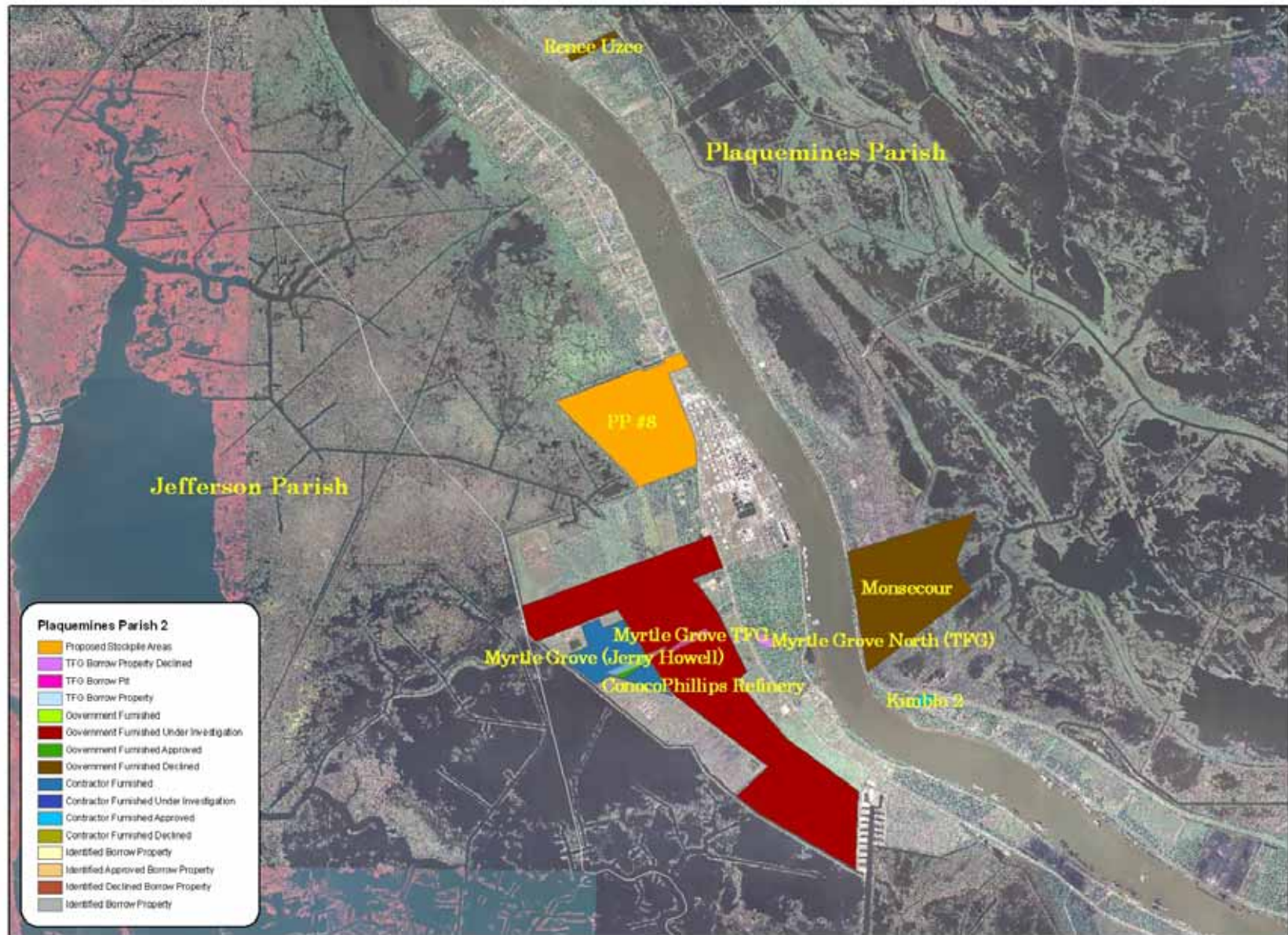


# Plaquemines Parish 1



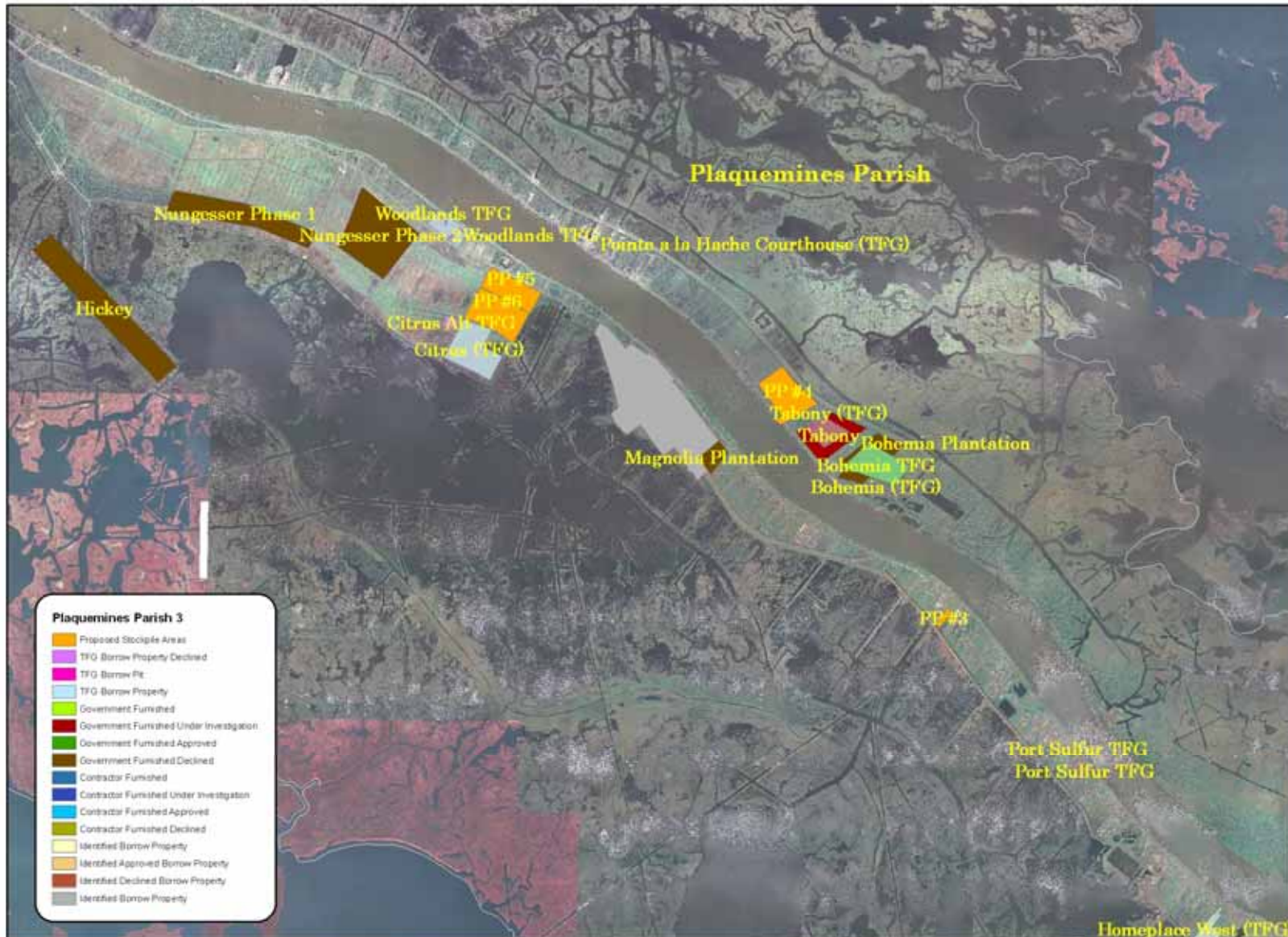


# Plaquemines Parish 2





# Plaquemines Parish 3

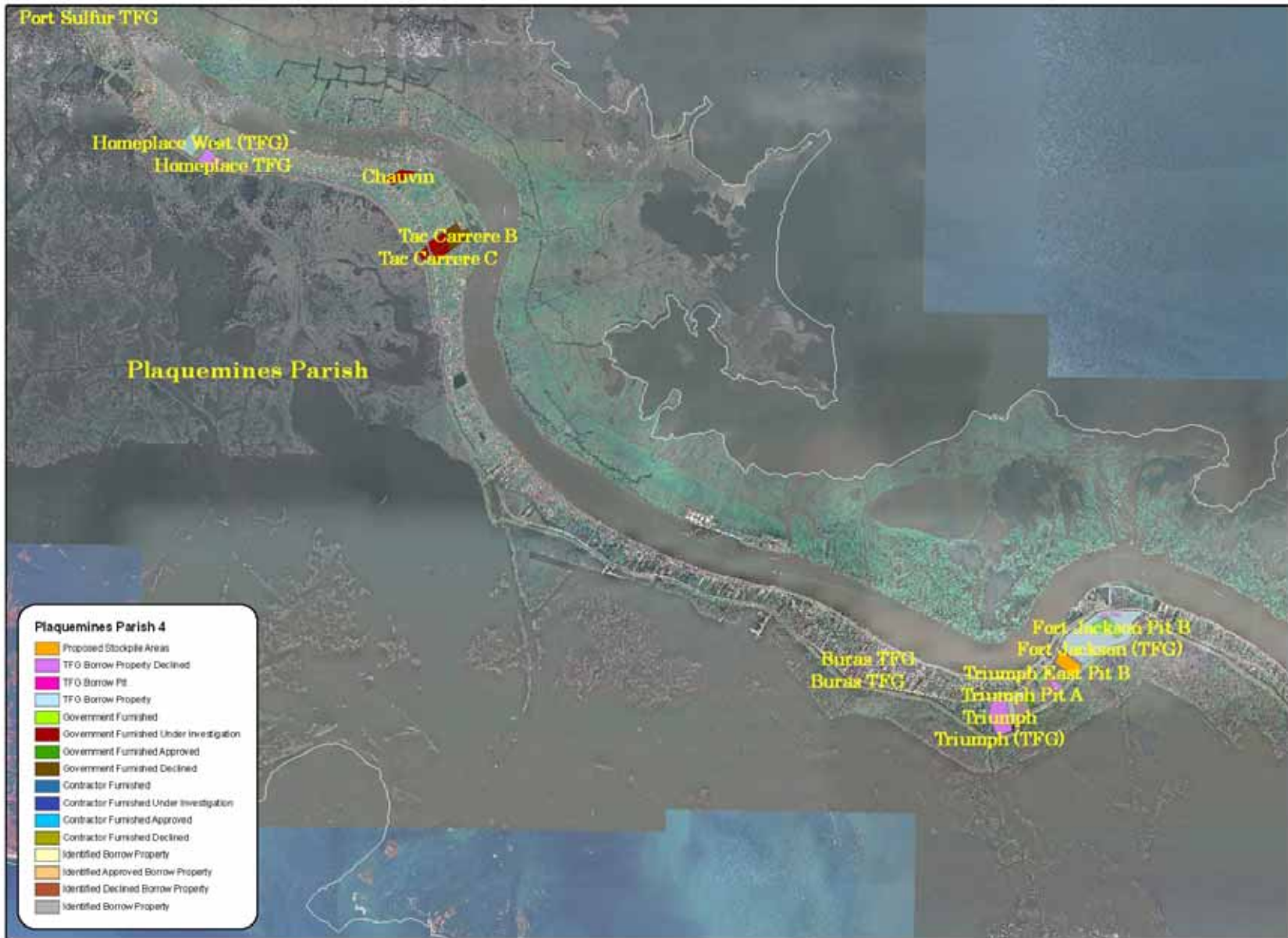


26 FEBRUARY 2008

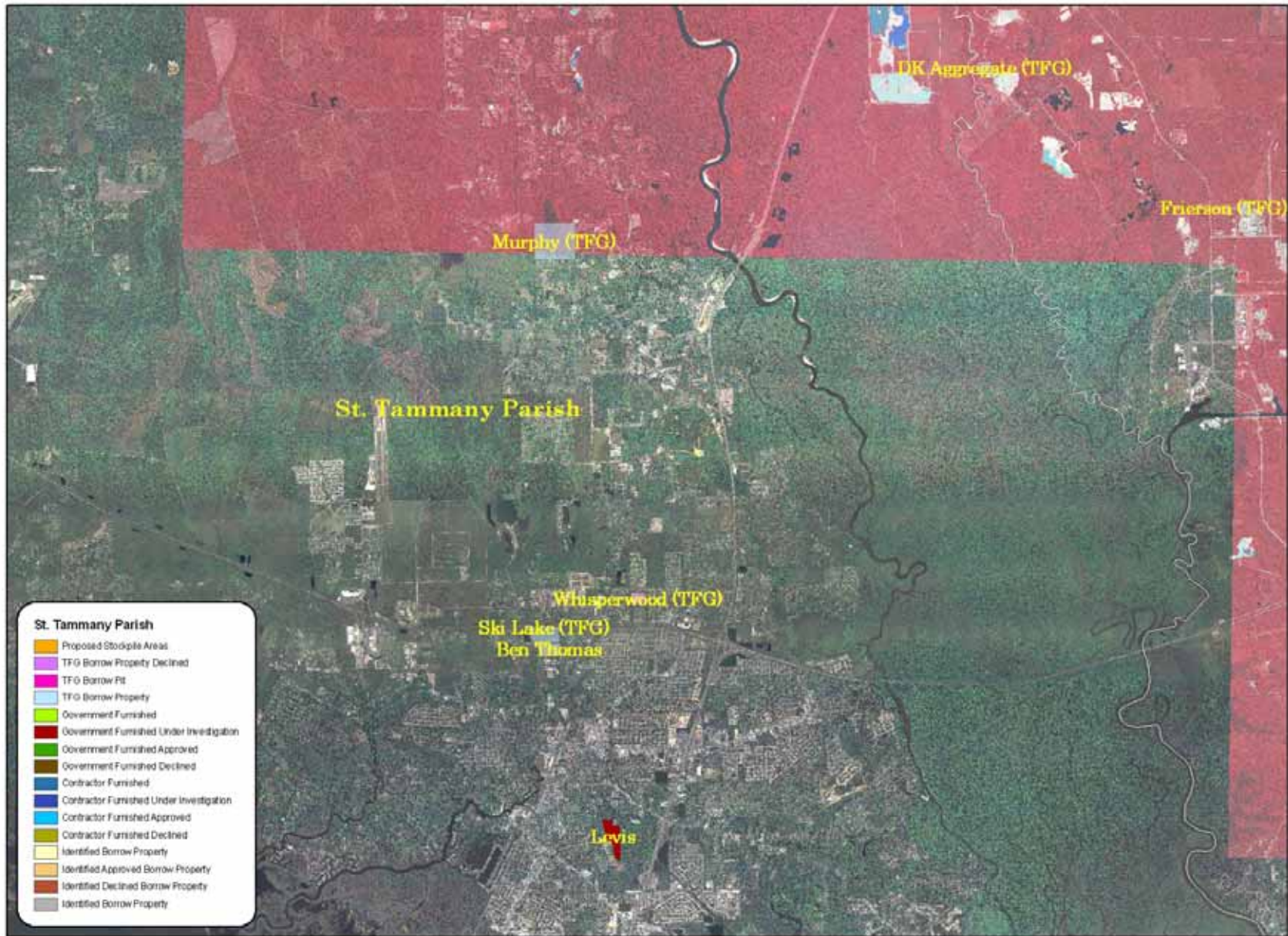




# Plaquemines Parish 4



# St. Tammany Parish





# Mississippi West

