

NEWS RELEASE

Uinta-Wasatch-Cache National Forest

Evanston-Mt. View Ranger Districts

1565 HWY 150 South, Suite A
Evanston, WY 82931

321 HWY 414
Mt. View, WY 82939



For Immediate Release

Contact: Kathy Jo Pollock (801) 558-8016

<http://fs.usda.gov/uwcnf>

EVANSTON/MT. VIEW RANGER DISTRICTS TO IMPLEMENT HOOP LAKE PRESCRIBED FIRE

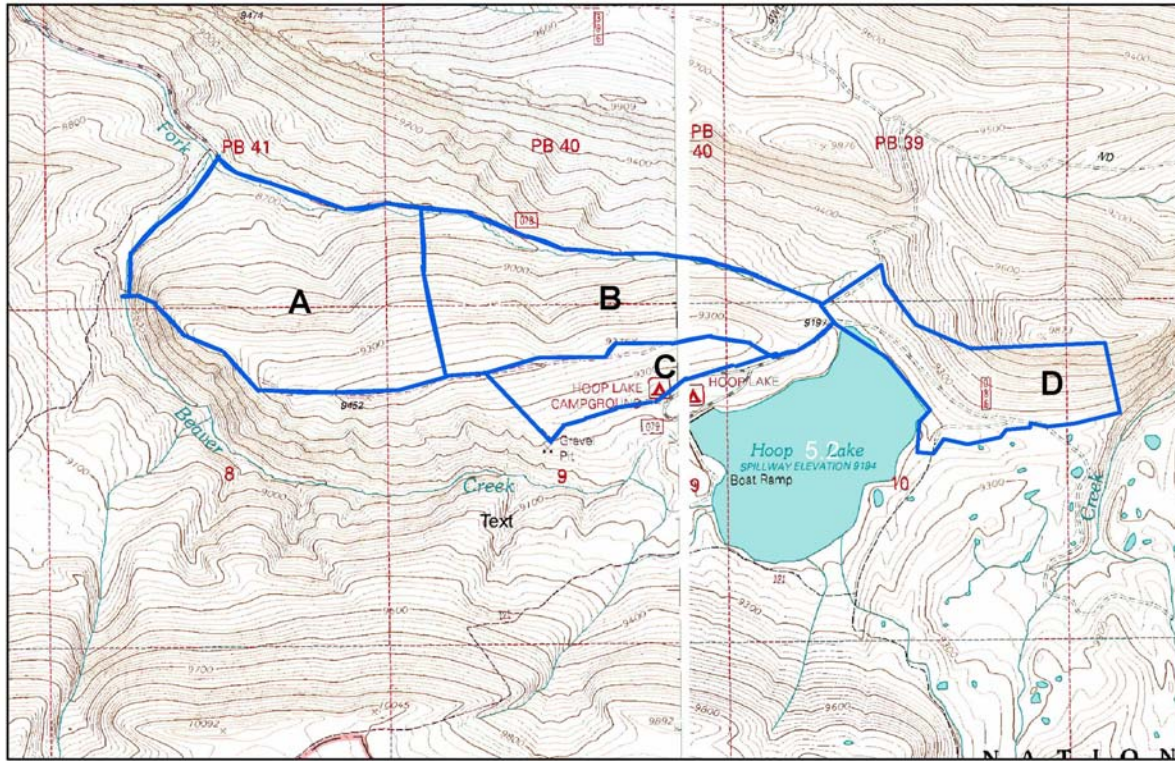
Salt Lake City, Utah, September 26, 2012 –Uinta-Wasatch-Cache National Forest, fire management personnel plan to implement the Hoop Lake prescribed fire project sometime during October 1, 2012 through November 2012.

The Hoop Lake prescribed fire project is located in Summit County, Utah, 11 miles south of Lonetree, Wyoming. The project consists of 4 burn units totaling 570 acres in the Hoop Lake and East Beaver Creek areas. The primary objective of the prescribed fire is to reduce fuels, improve wildlife habitat and to restore fire back into the ecosystem. The majority of the timber communities in the project area are approaching late successional stages due to a lack of natural disturbances. The burn will create age-class mosaics across the landscape in timber ecosystems and is intended to lower the risk of future wildfires. (see attached map)

The prescribed fire area will be closed to the public on the day of the burn and possibly the day after. The long-term benefits of prescribed fires will be of value to wildlife and hunters alike. Hunters will need to check with the Evanston/Mt. View Ranger District Offices (307) 789-3194 or (307) 782-6555 to confirm when the prescribed fire will be implemented.

To meet resource and safety concerns, prescribed fires only occur when a specific set of conditions are met. These conditions include air, soil and vegetation moisture levels, temperatures, wind directions and speeds, smoke dispersal and expected fire behavior. Prescribed fires will only be ignited when fuel moistures and weather conditions will allow the smoke to dissipate or drift away from communities near the burn area. Fire personnel will use hand-held drip torches and a helicopter to ignite fire in the designated units. Crews will monitor the burn area until the fire is completely extinguished.

Hoop Lake Sage Rx



Legend

 Treatment_Units

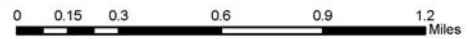
A 284

B 213

C 73

D 125

Total 695 acres



SLC Meridian

T 2N, R 16E, Sections 2, 3, 4, 9, 10, 11

Prepared by: Eric LaMalfa 8/18/2008