



US Army Corps of Engineers



# Greater New Orleans Hurricane and Storm Damage Risk Reduction System

## Individual Environmental Report 25 Public Meeting

Ms. Soheila Holley, Senior Project Manager  
Mr. Mike Stack, Project Manager  
Waggaman Playground  
Jan. 12, 2009

---

**BUILDING STRONG** <sup>SM</sup>



# Agenda

## Meeting Purpose:

- Provide an overview of the need for borrow (clay) material to complete the hurricane system
- Discuss borrow sites evaluated in Individual Environmental Report 25 for use in Westbank and Vicinity projects.

## Presentation:

- Overview of the National Environmental Policy Act and alternative arrangements
- What is borrow?
- Sites investigated
- IER 25 borrow sites
- Discussion



# National Environmental Policy Act: NEPA

- Required for all major Federal actions
- Analyze potential impacts to the human and natural environment and investigate reasonable alternatives
- Analyses documented in Individual Environmental Reports (IER)
- Public Involvement is KEY! We want to hear from you!
- Goal: more informed decision making through public involvement



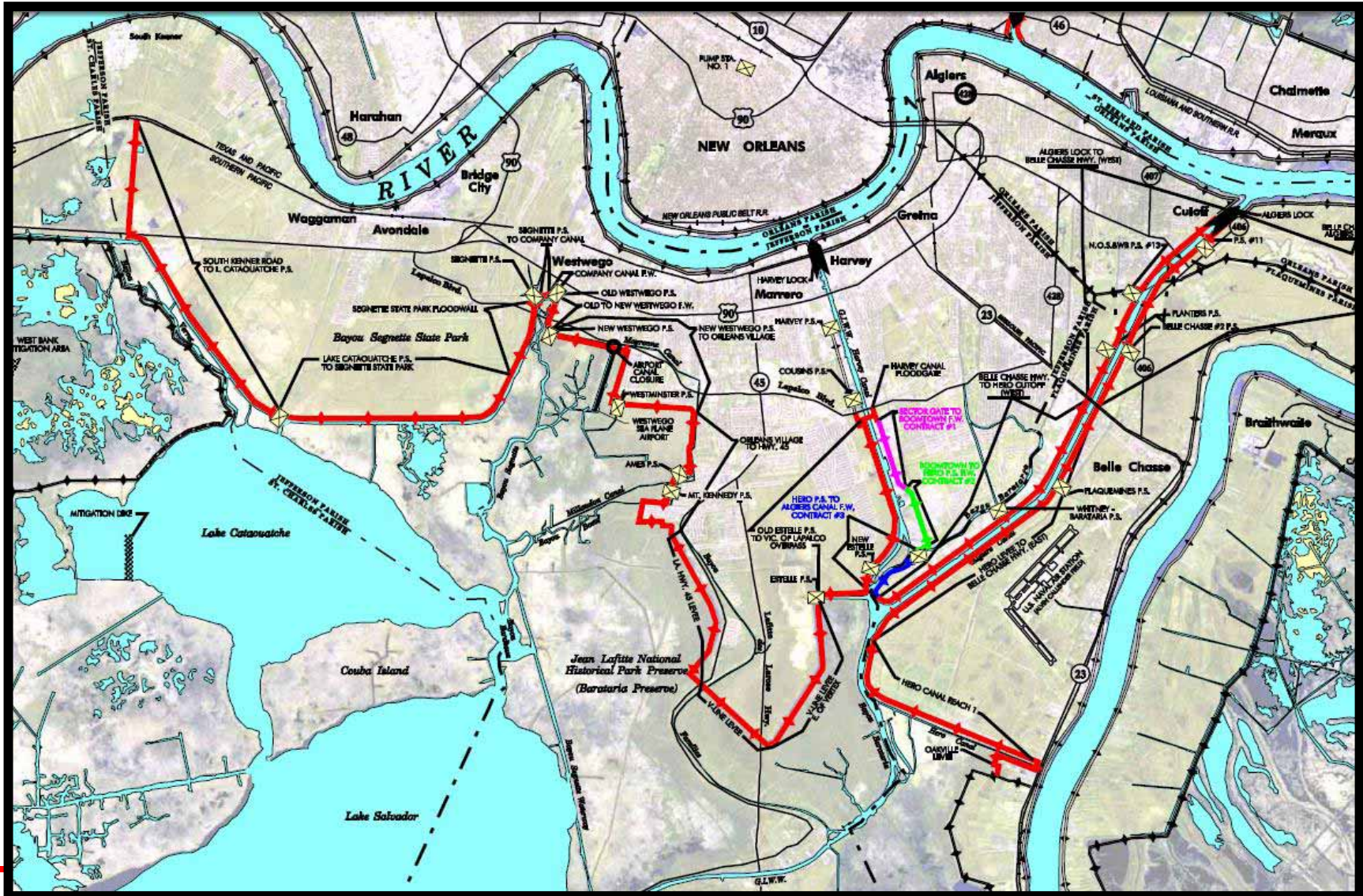
## Individual Environmental Report 25

- Titled “Government Furnished Borrow Material #3, Jefferson, Orleans and Plaquemines Parishes”
- Investigating four sites in Jefferson, Orleans and Plaquemines parishes
- Released for 30-day review on Dec. 8, 2008
- Comment period extended to Jan. 12, 2009, the close of this public meeting





## Westbank and Vicinity Project

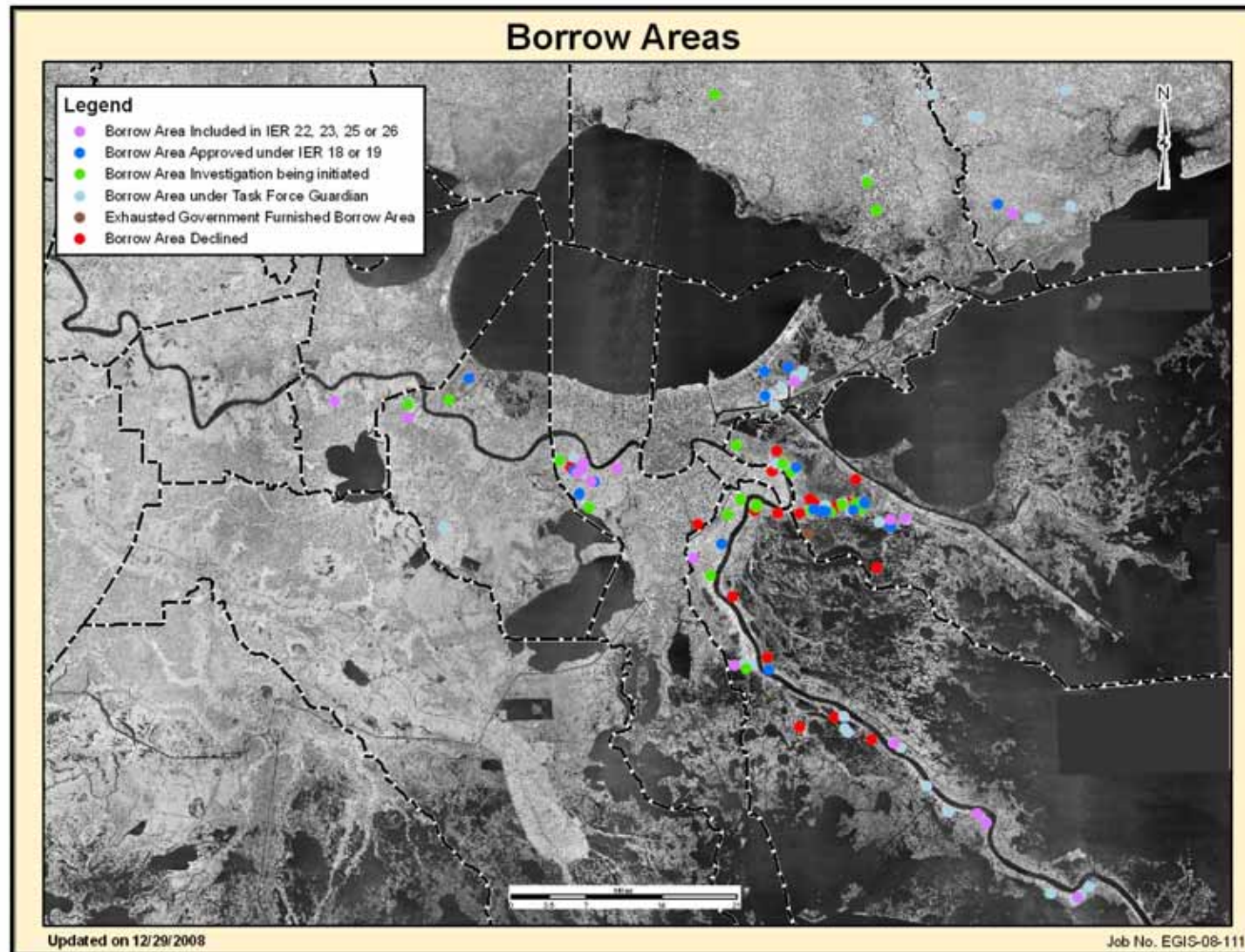


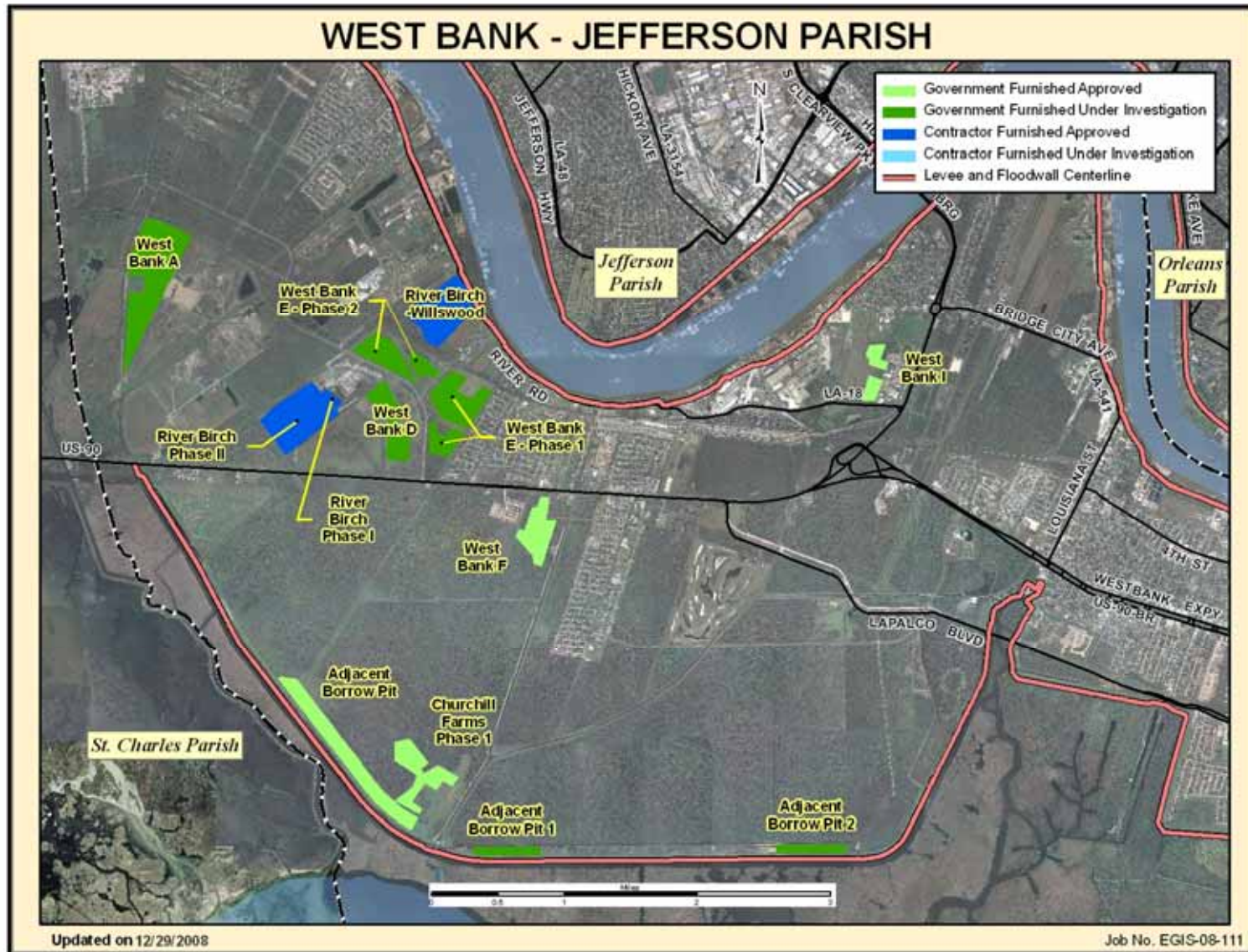


# Borrow

- **The Corps needs approx. 75 million cubic yards of clay material**
- **Sources of Borrow**
  - **Government Furnished**
  - **Contractor Furnished**
  - **Supply Contract**













# Westbank E – Phase 1











# Upcoming Public Meetings

- **Jan. 28, 2009**
  - Plaquemines Parish Non-Federal Levees at Woodland Plantation
- **Feb. 11, 2009**
  - GIWW West Closure Complex public hearing with the EPA



# IER Currently Available for Public Review

- **IER 25 – Government Furnished Borrow sites**
  - Released for public review and comment: Dec. 8, 2008
  - Comment period extended to: Jan. 12, 2009
- **IER 12 – Harvey and Algiers Canals Levees and Floodwalls (GIWW West Closure Complex)**
  - Released for public review and comment: Jan. 5, 2009
  - Public comment period closes: Feb. 4, 2009

\* copies available at [www.nolaenvironmental.gov](http://www.nolaenvironmental.gov) or by request



# Opportunities for Public Input

- Monthly Public Meetings throughout New Orleans Metro Area
- Comments can be submitted at: [www.nolaenvironmental.gov](http://www.nolaenvironmental.gov)
- Individual Environmental Reports (IER) 30-day Public Review

Questions and comments regarding Greater New Orleans Storm Damage Risk Reduction System projects should be addressed to:

**Gib Owen**

**PM-RS**

**P.O. Box 60267**

**New Orleans, LA 70160-0267**

**Telephone: 504-862-1337**

**E-mail: [mvnenvironmental@usace.army.mil](mailto:mvnenvironmental@usace.army.mil)**





## NOLA Environmental

NEW ORLEANS, LOUISIANA  
Environmental Compliance Data Bank

[www.nolaenvironmental.gov](http://www.nolaenvironmental.gov)

[PROJECTS](#)

[MEETINGS](#)

[LIBRARY](#)

[DATA VIEWER](#)

[GET INVOLVED](#)

[RELATED LINKS](#)

Welcome to NOLA Environmental! This site has been set up to share with the public the efforts being made by the U.S. Army Corps of Engineers and other Federal and state agencies in south Louisiana regarding the environmental compliance for proposed Federal and state Hurricane Protection Projects. Additional information pertaining to other Federal and state agencies' hurricane recovery efforts in southeast Louisiana will also be posted on the site as it becomes available. Learn more...

### FEATURED PROJECT



USACE-MVN Emergency Alternative Arrangements  
Greater New Orleans  
Hurricane and Storm Damage  
Risk Reduction System Projects

### Announcements

- Draft [IER 12 Public Comment](#) Period 1/5 - 2/4
- Draft [IER 25 Public Comment](#) Period 12/8 - 1/12
- The Decision Record for [IER 11 Tier 2 Borgne](#) has been signed by the District Commander (October 21, 2008)
- [IHNC Lock Replacement Project Public Comment](#) Period 10/10 - 1/24

[More...](#)

### Upcoming

- [01/12/2009 - Draft IER 25 Public Comment Period Ends](#)
- [01/12/2009 - Public Meeting \(IER 25\)](#)

[More...](#)

### Newly Available

**NEW >>** [NOLA Environmental Basic Data Viewer](#)

- [08 January 09 Public Meeting Presentation IER 13](#)
- [21 August 08 Public Meeting Summary IERs 12 13 14](#)

[More...](#)



# US Army Corps of Engineers



## The Corps' new Web site [www.mvn.usace.army.mil](http://www.mvn.usace.army.mil)

U.S. Army Corps of Engineers New Orleans District - Microsoft Internet Explorer provided by USACE, New Orleans District

File Edit View Favorites Tools Help

Address <http://www.mvn.usace.army.mil/>

ABOUT US SERVICES BUSINESS CAREERS REFERENCES PRESS ROOM CONTACT US LINKS

US Army Corps of Engineers

search usace Search

New Orleans District

### Floodwalls

*Building them bigger, stronger, better*  
The U.S. Army Corps of Engineers is continuing to work expeditiously to complete the Hurricane and Storm Damage Risk Reduction System (HSDRRS) by 2011. To this end, the Corps is using valuable lessons learned to construct more resilient levees and floodwalls.

[See for yourself >>](#)

### PUBLIC INFORMATION

#### 6 Hurricane & Flood Risk Reduction

[Learn more about what the Corps is doing to reduce risk here >>](#)

[Emergency Information](#)  
[Road Closures](#), [Disaster Recovery](#), [Parish Information](#) and [More >>](#)

[NOLA Environmental](#)  
Did you miss a meeting? No problem! Find presentations, summaries and [More >>](#)

### TOP HEADLINES

[document confirming action on Westwego, Harvey](#)

[Corps releases environmental document for public review](#)

[Corps to provide update on Westbank risk reduction projects](#)

[Corps Seeks Industry Input on Design and Construction Techniques for Westbank](#)

Scroll: [Faster](#) | [Slower](#) | [Off](#)  
[RSS](#) ([What is RSS?](#))

### ASK THE CORPS

The Corps wants to hear from you!

**Q:** Do you have information on the closing of Industrial Locks on August 1, 2008 for 60 days?

**A:** Yes, for information regarding the August 1st closing of the Inner Harbor Navigation Canal Lock, [please click here](#).

Submit questions or comments to [askthecorps@usace.army.mil](mailto:askthecorps@usace.army.mil).

### FEATURED VIDEOS

**West closure complex**  
Learn more about the alternatives under consideration to reduce risk on the Westbank. [Watch >>](#)

**Hurricane & Storm Damage Risk Reduction System**  
From levees to pumping stations, [find out more](#) about system features.

9/9/2008 [DISCLAIMER](#) [PUBLIC INQUIRIES](#) [PRIVACY AND SECURITY](#) [EOIA](#) [INFORMATION QUALITY ACT](#) [ACCESSIBILITY](#)

Internet

**BUILDING STRONG<sup>SM</sup>**



US Army Corps of Engineers

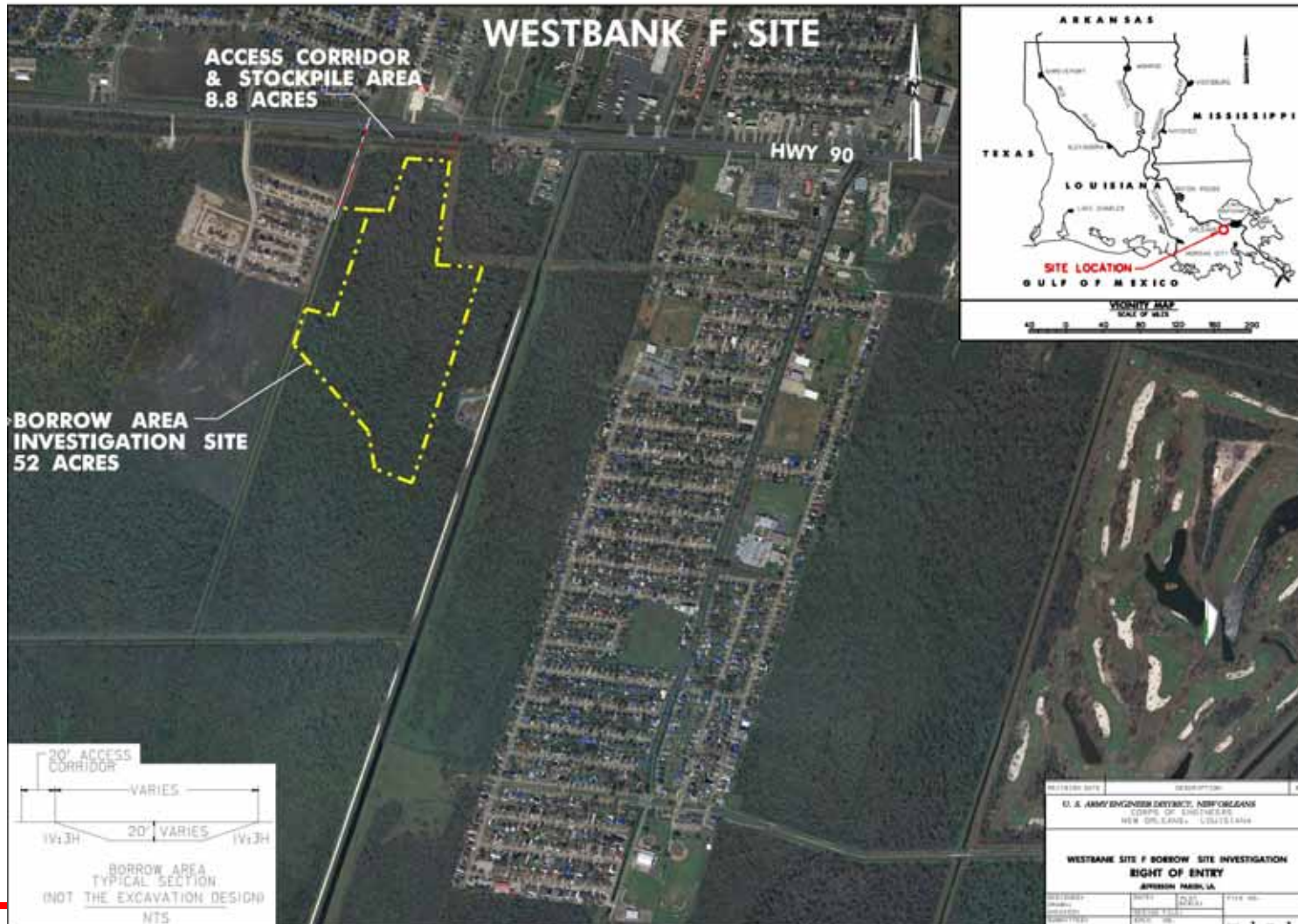


# Discussion





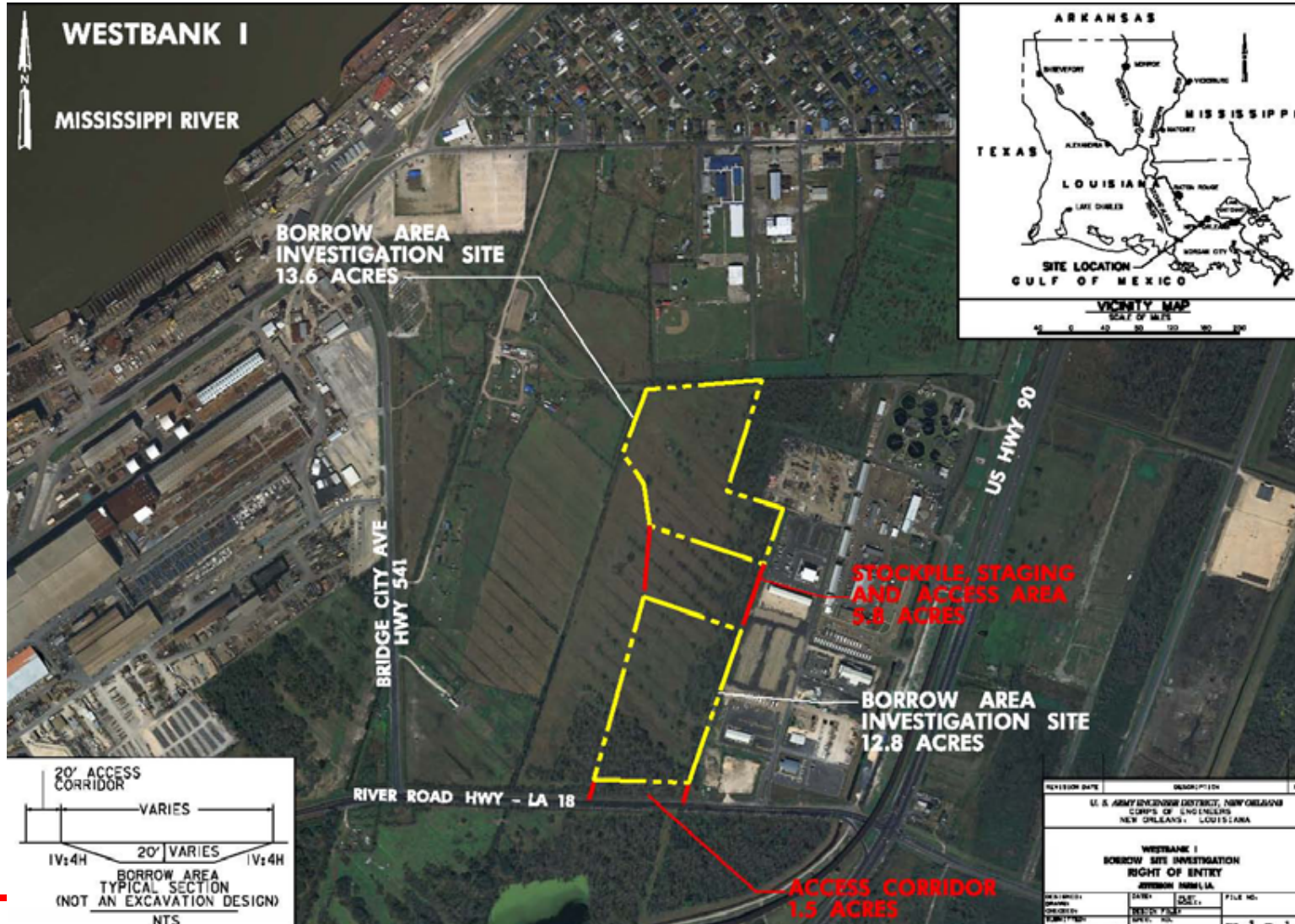
## Westbank F







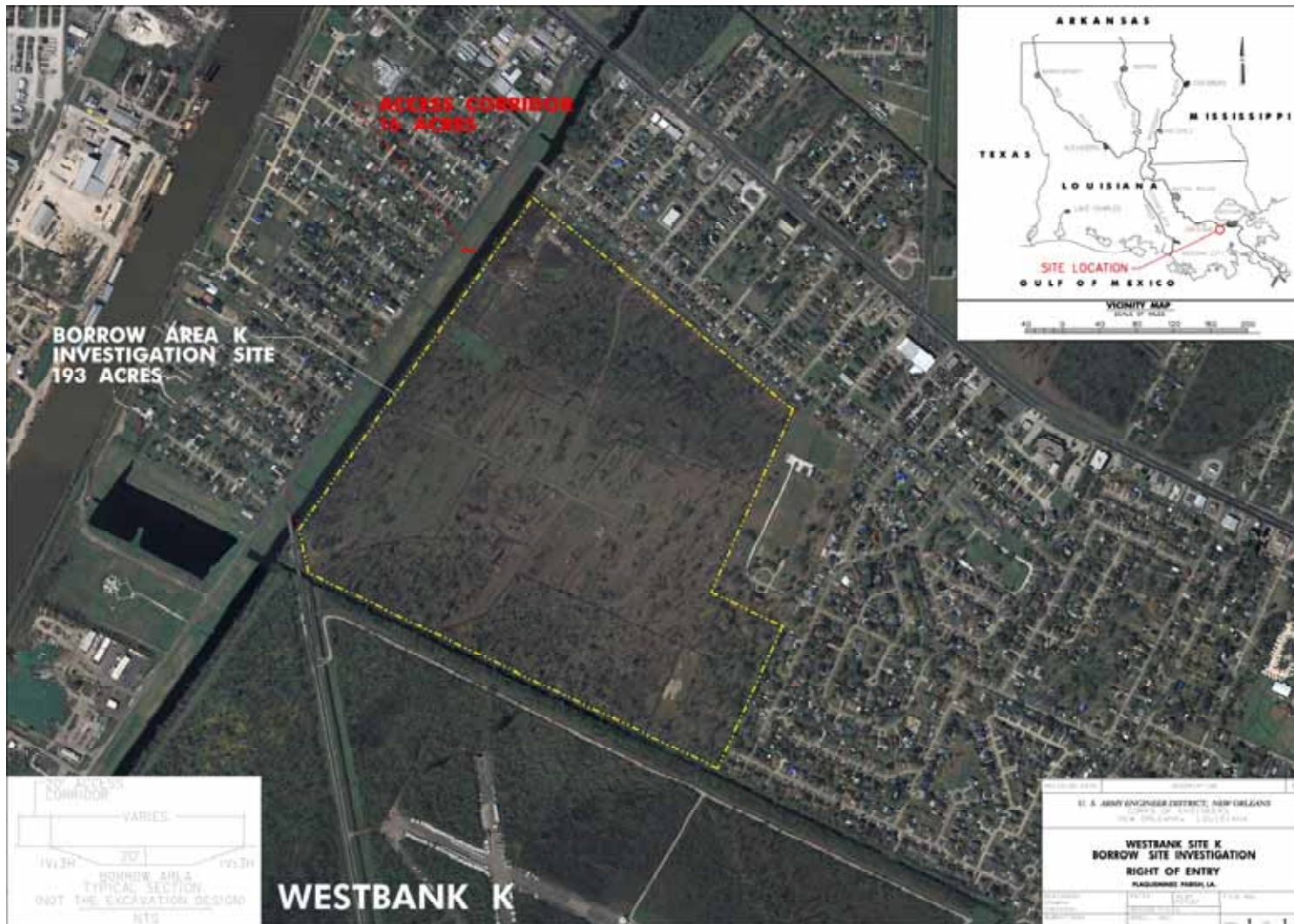
# Westbank I







## Westbank K





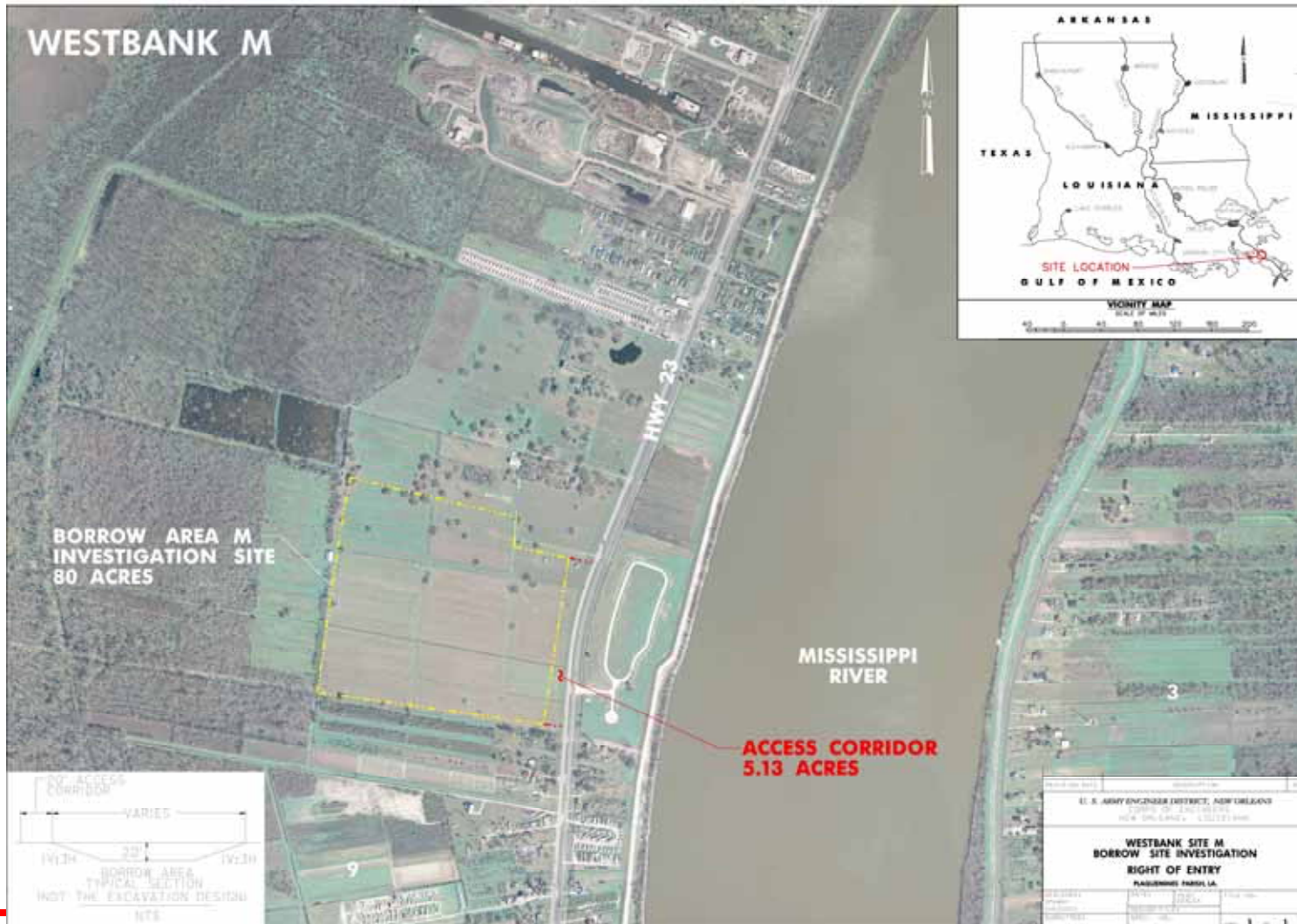


## Westbank L





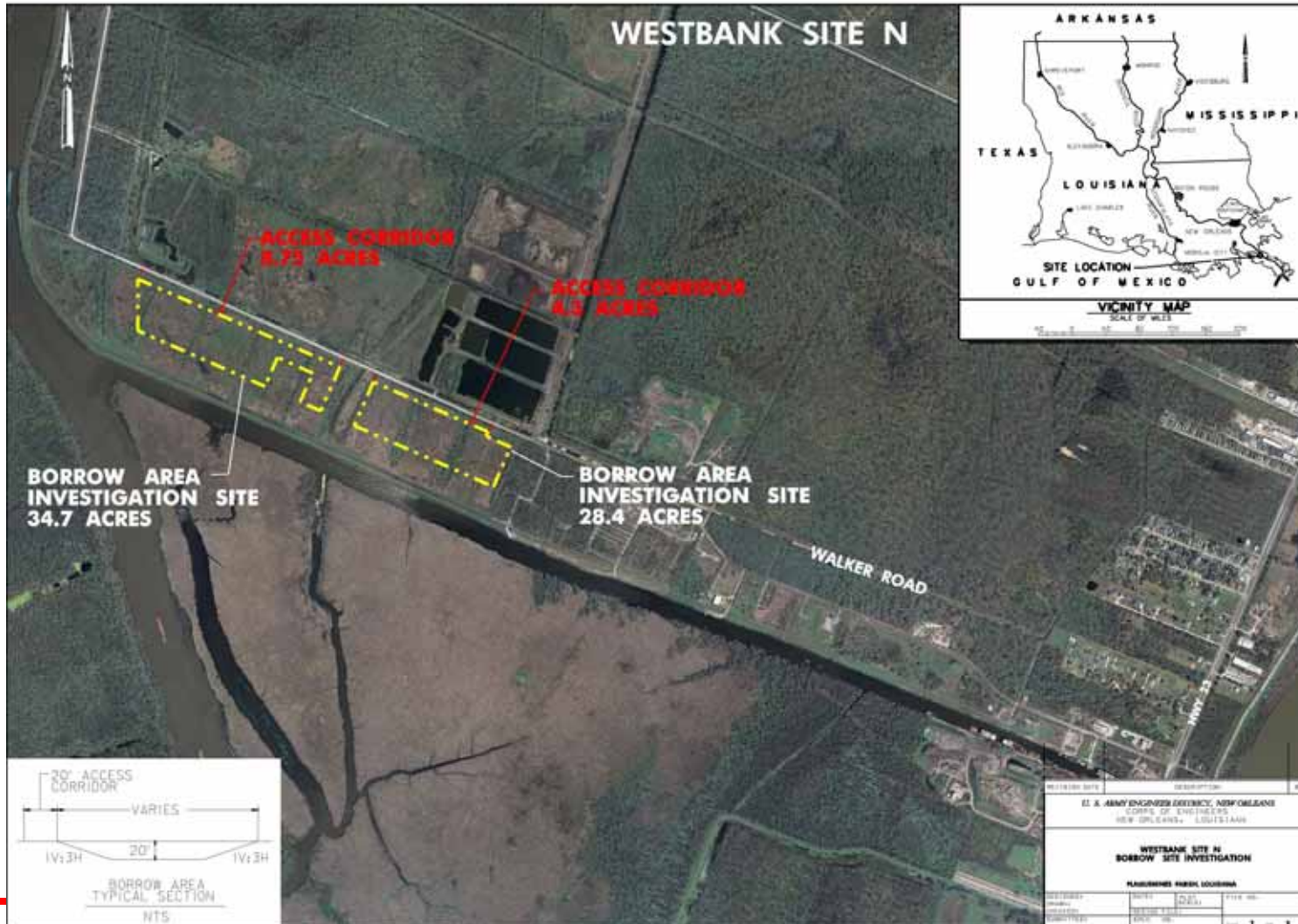
## Westbank M







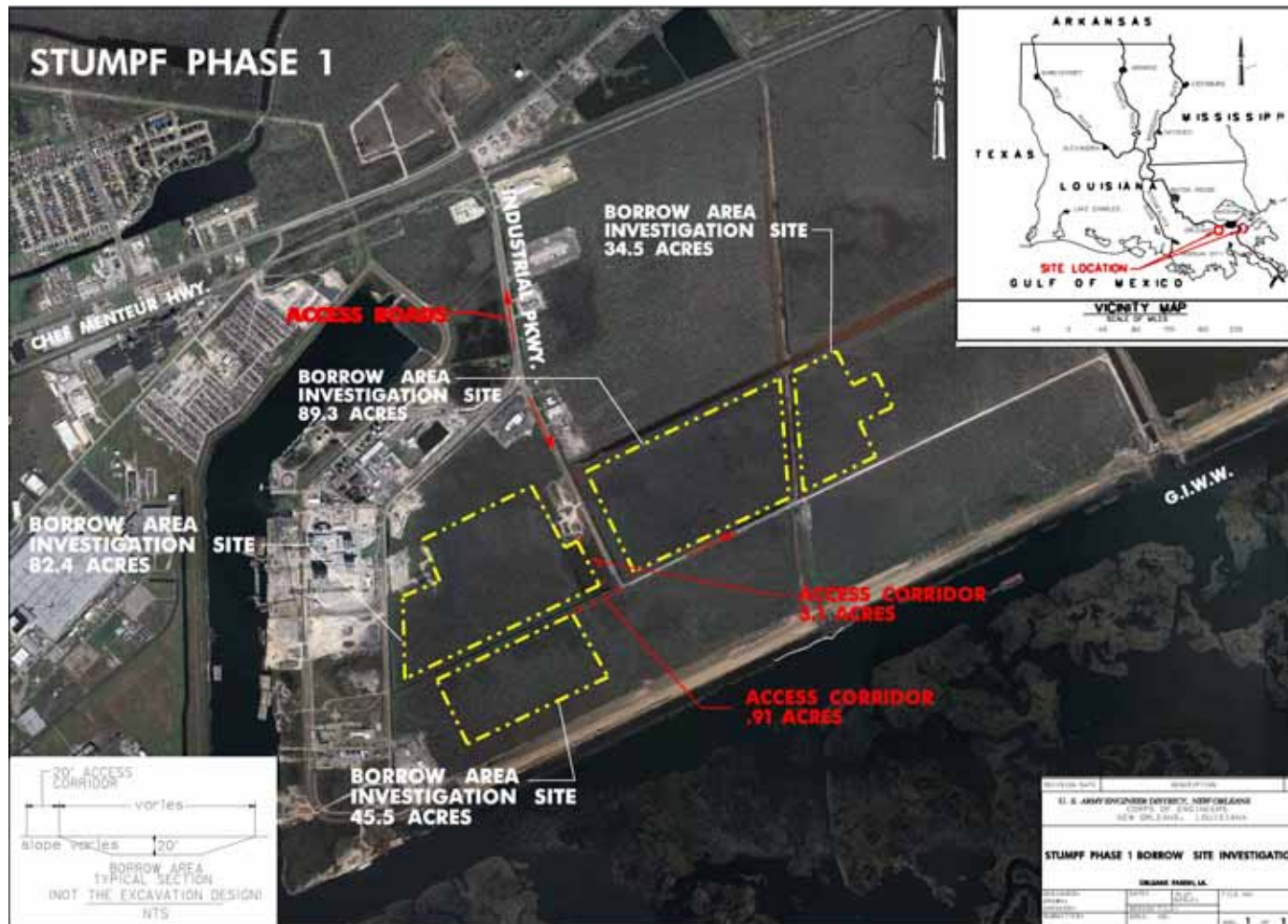
## Westbank N







## Stumpf Phase 1





## Stump Phase 2



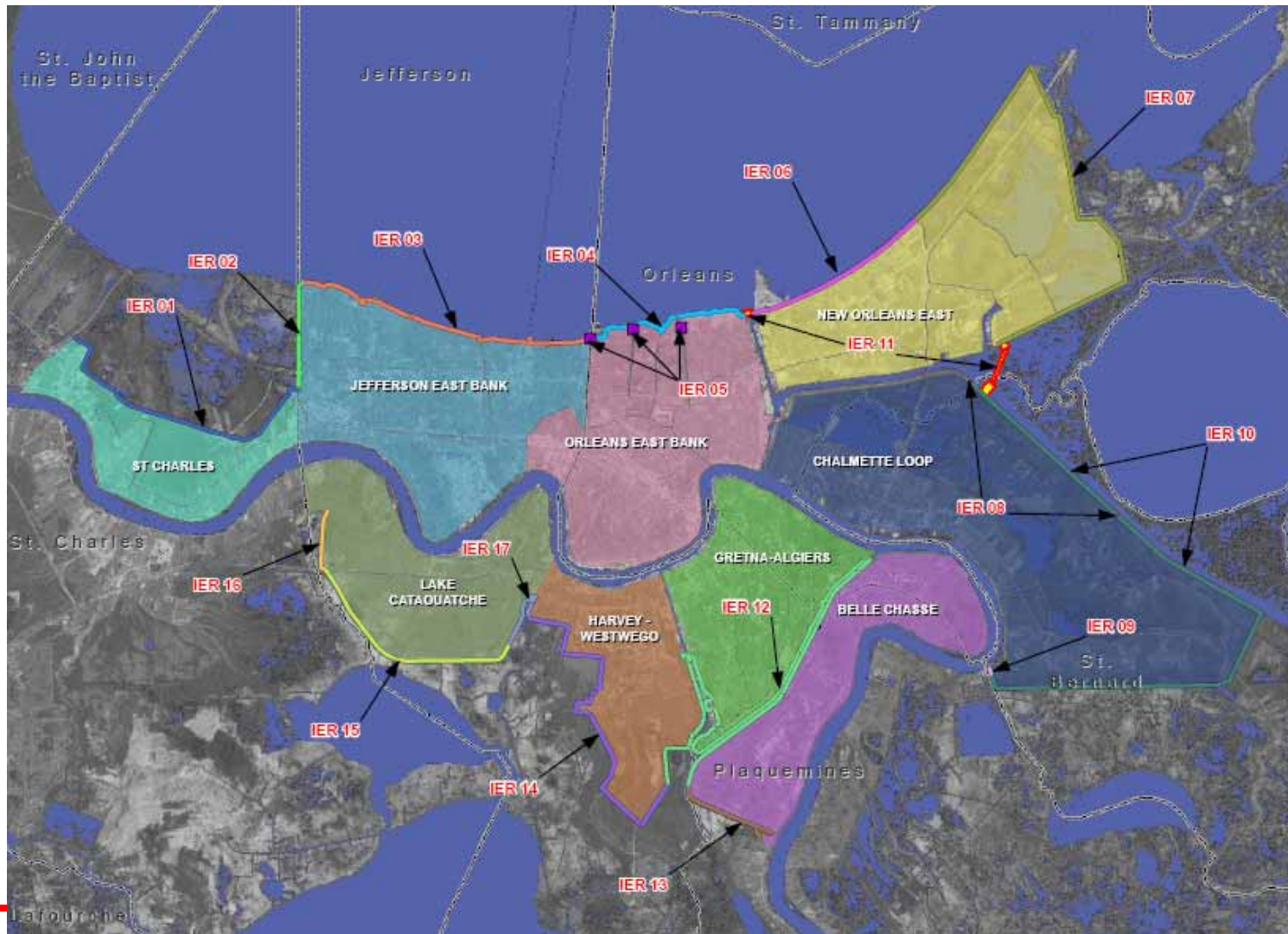








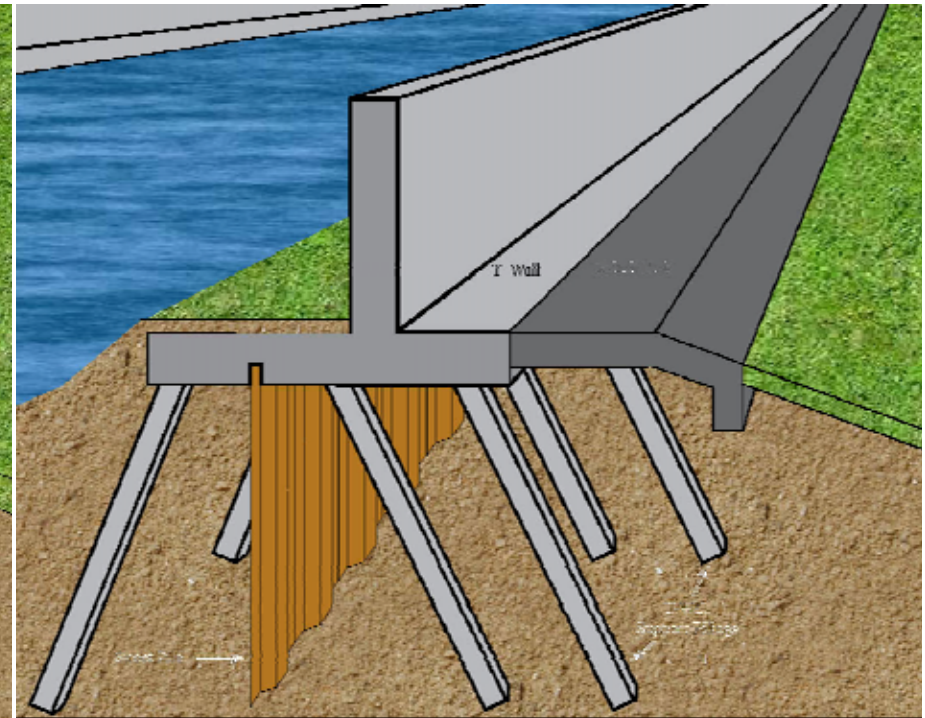
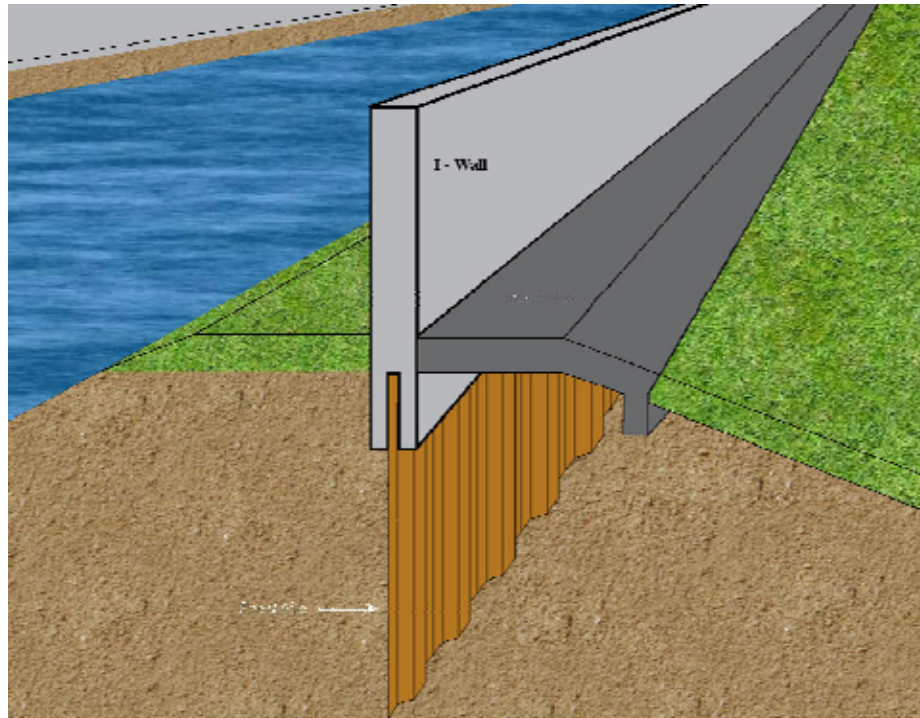
# Individual Environmental Report - Project Areas





I-Wall

T-Wall



Pre-Hurricane Katrina

Post-Hurricane Katrina



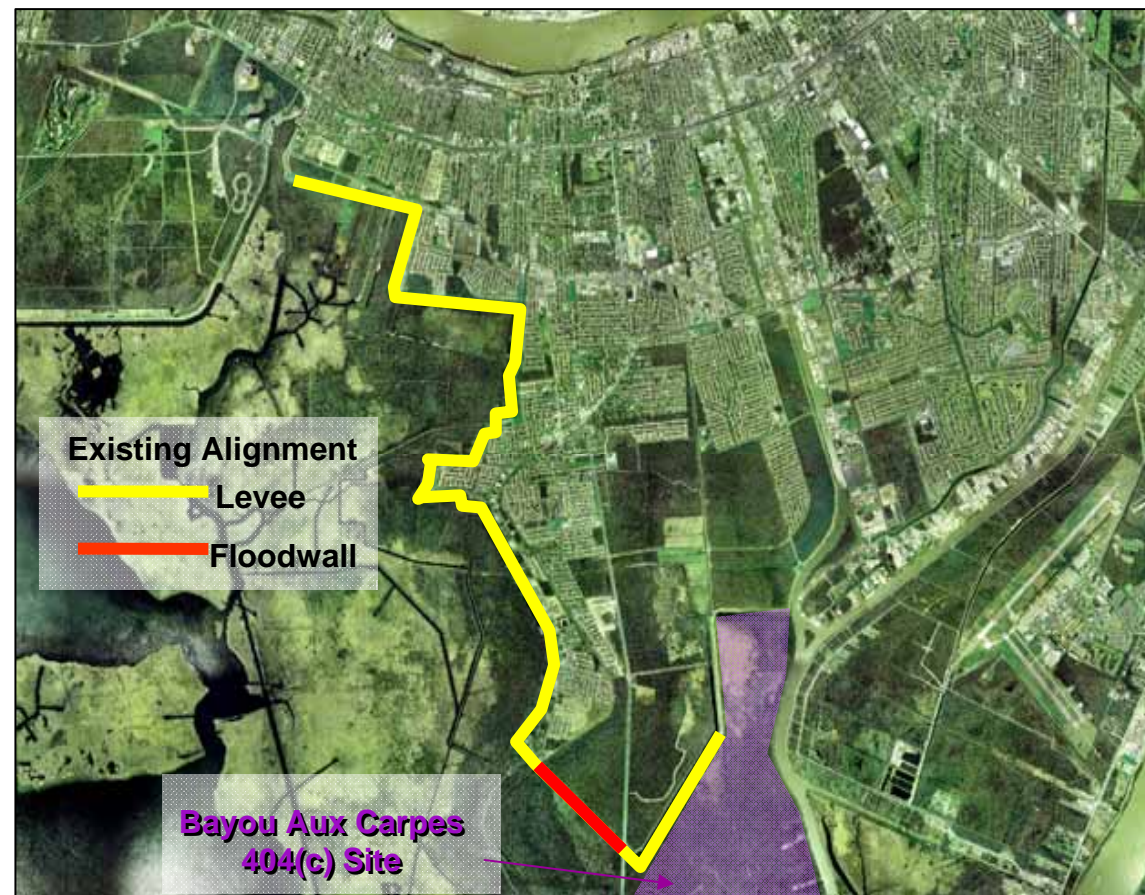


# Westwego to Harvey Levees and Floodwalls (IER 14)

- Public comment period closed in early Aug. 2008.
- New Orleans District Commander, Col. Alvin Lee, signed the IER 14 Decision Record in late Aug. 2008
- Reduces risk to people and businesses in Harvey, Woodmere, Estelle, Walkertown and Westwego

## Government Action:

- Raise earthen levees along the current alignment to elevation 14
- Replace existing I-walls with T-walls







# Lake Cataouatche Area (IER 15)

- Public comment period closed in May 2008.
- New Orleans District Commander, Col. Alvin Lee, signed the IER 15 Decision Record in mid-Jun. 2008
- Reduces risk for communities on the Westbank including, Lake Cataouatche, Bridge City, Marrero, Waggaman, Westwego and surrounding neighborhoods

## Government Action:

- Raise earthen levees along the current alignment to elevation 15.5
- Replace existing I-walls with T-walls

