



US Army Corps
of Engineers
New Orleans District

Borrow

Earthen levee construction requires a specific type of clay material which compacts well and prevents seepage. This material needs to contain specific amounts of sand, organic material, etc.

Before borrow material can be used for levee construction, soil borings, testing, and environmental clearance needs to be completed. Borrow site investigation can take as long as six to nine months to complete.

Borrow material is normally acquired from a landowner through a real estate transaction. However, the alternative methods of securing borrow, Contractor Furnished or Supply Contract, can be utilized when found to be in the best interest of Government.

Currently the Corps is aggressively pursuing three methods for acquiring borrow material:

Government Furnished - Utilizing this method, the Corps first identifies the borrow source location, then investigates and approves the borrow material as suitable for use. The acquisition of the real estate interest over the land may be in the name of the non-Federal sponsor.

Contractor Furnished – When using this method, the Corps requires a contractor to provide their own borrow material. The Government may provide the contractor with a list of “Contractor Furnished Sites,” but the contractor is ultimately responsible for providing the borrow material for construction. The contractor enters into a contractual agreement with the landowner, not with the Corps, to acquire the borrow material.

Supply Contract – This method allows supply contractors to bid on task orders for the supply of borrow material to be used by the Corps and other contractors for construction of the HSDRRS.





US Army Corps
of Engineers
New Orleans District

Greater New Orleans Hurricane and Storm Damage Risk Reduction System Borrow Sources

- **Lake Pontchartrain & Vicinity Project Borrow Needs**
 - New Orleans East: 23,100,000 cy
 - New Orleans Metro: 260,000 cy
 - Jefferson/St. Charles: 16,000,000 cy
 - St. Bernard Parish: 28,400,000 cy
- **Westbank & Vicinity Project Borrow Needs**
 - Belle Chasse: 5,000,000 cy
 - Gretna/Algiers: 3,000,000 cy
 - Harvey/Westwego/Lake Cataouatche: 13,000,000 cy
- **Other Projects**
 - Plaquemines Parish: 30,000,000 cy



Proposed and Approved Borrow Sources

IER 18 – Government Furnished Borrow

Approved 2/21/2008

St. Charles Parish

Bonnet Carre North

Jefferson Parish

Churchill Farms

Westbank Site G

Orleans Parish

Maynard

Cummings North

St. Bernard Parish

Dockville

910 Bayou Road

1418/1420 Bayou Road

1572 Bayou Road

4001 Florissant Highway

Plaquemines Parish

Belle Chasse

Triumph

IER 19 – Pre-Approved Contractor Furnished Borrow

Approved 2/14/2008

Iberville Parish

St. Gabriel

Jefferson Parish

River Birch Phase 1 and 2

Orleans Parish

Eastover

Hancock County, MS

Pearlington

St. Bernard Parish

Gatien Navy

Sylvia Guillot

DK Aggregates

Plaquemines Parish

Kimble #2

IER 22 – Government Furnished Borrow # 2

Approved 5/30/08

Plaquemines Parish

Brad Buras

Chauvin

Tabony

Westbank N

Jefferson Parish

Westbank F

Westbank I

IER 23 – Pre-Approved Contractor Furnished Borrow # 2

Approved 5/8/08

St. Bernard Parish

1025 Florissant Hwy.

Acosta

St. Charles Parish

3C Riverside

Plaquemines Parish

Myrtle Grove

Hancock County, MS

Pearlington Dirt Phase 2

IER 25 – Government Furnished Borrow # 3

Tentative public review: July 2008

Orleans Parish

Stumpf Phase 1

Jefferson Parish

Westbank D

Westbank E

Plaquemines Parish

Tac Carrere

Westbank M

IER 26 – Pre-Approved Contractor Furnished Borrow # 3

Tentative public review: June 2008

Jefferson Parish

Willswood

South Kenner Road

Plaquemines Parish

Meyer

St. John the Baptist

Willow Bend

Hancock County, MS

Harry Frierson

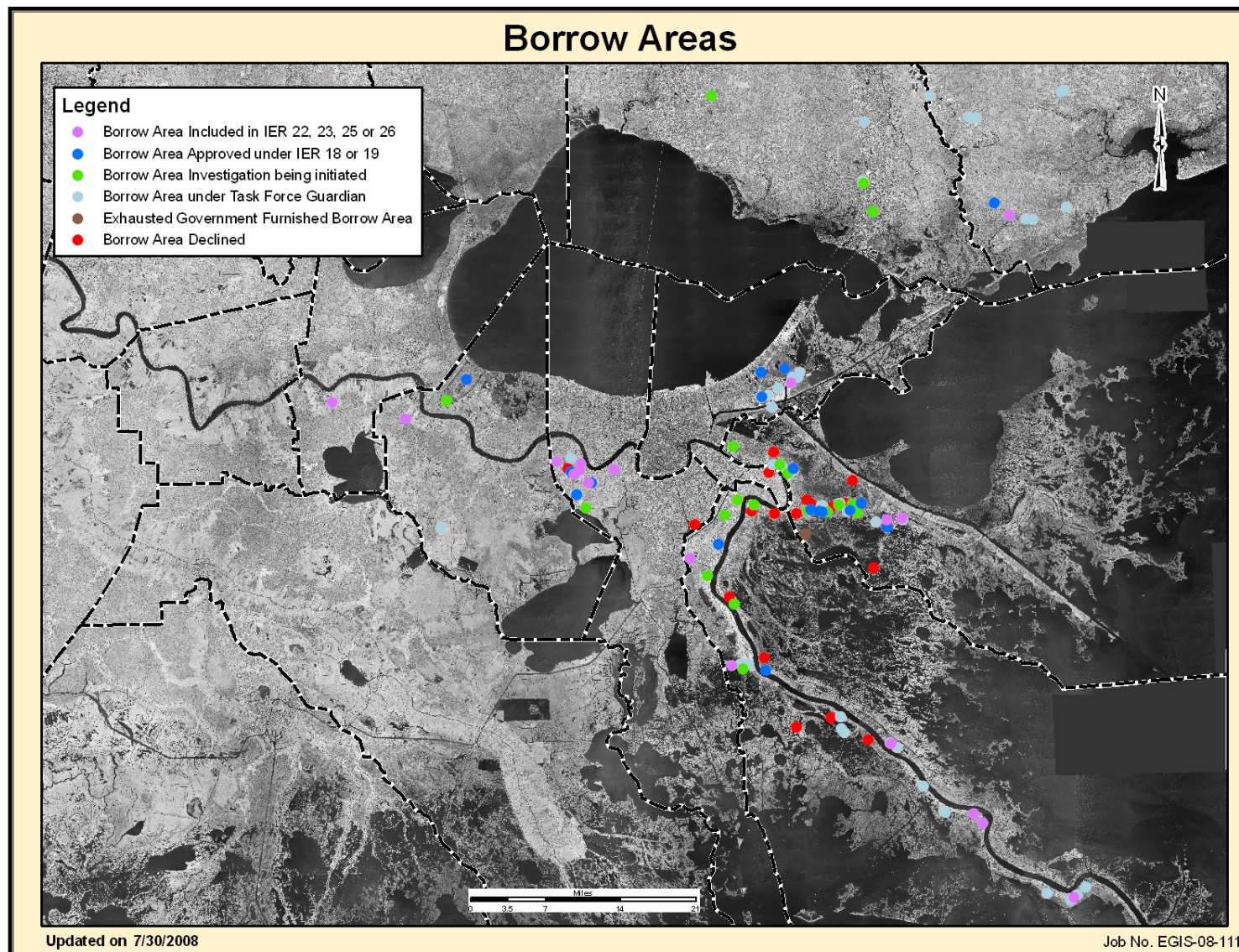
IER: Individual Environmental Report. NEPA compliance for the GNOHSDRRS takes the form of multiple IERs that examine smaller portions of the proposed GNOHSDRRS. The work will culminate in a Comprehensive Environmental Document that will integrate the findings of all the previously prepared IERs, describe the work being completed as a system, and examine how each project is interrelated to the overall work being done. Groups of proposed borrow areas are investigated in each IER.

Borrow area does not meet Corps geotechnical criteria, and will not be used for the GNOHSDRRS.



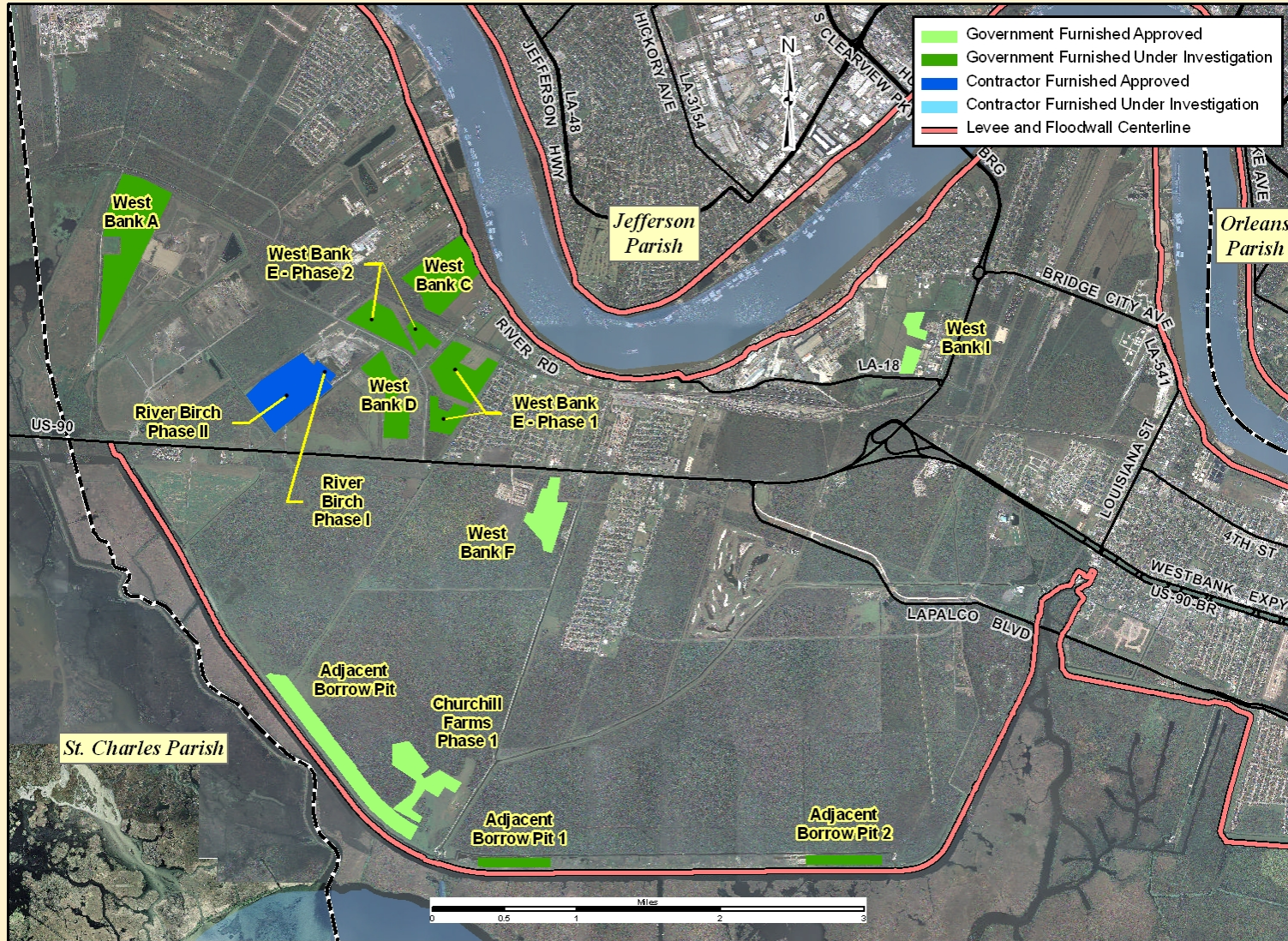
Borrow

All Sites Investigated





WEST BANK - JEFFERSON PARISH





WEST BANK 2 - JEFFERSON PARISH

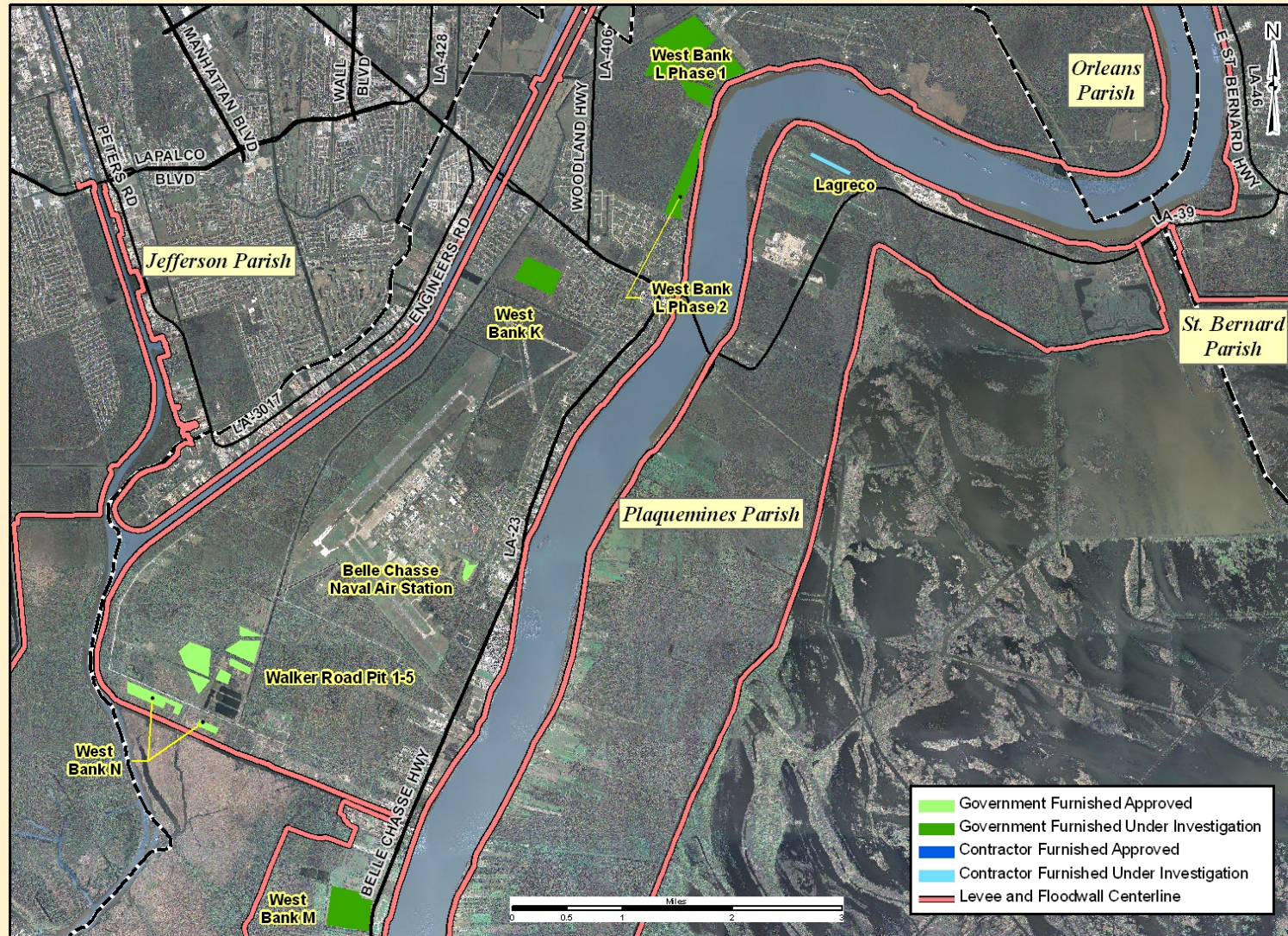


Updated on 7/22/2008

Job No. EGIS-08-111

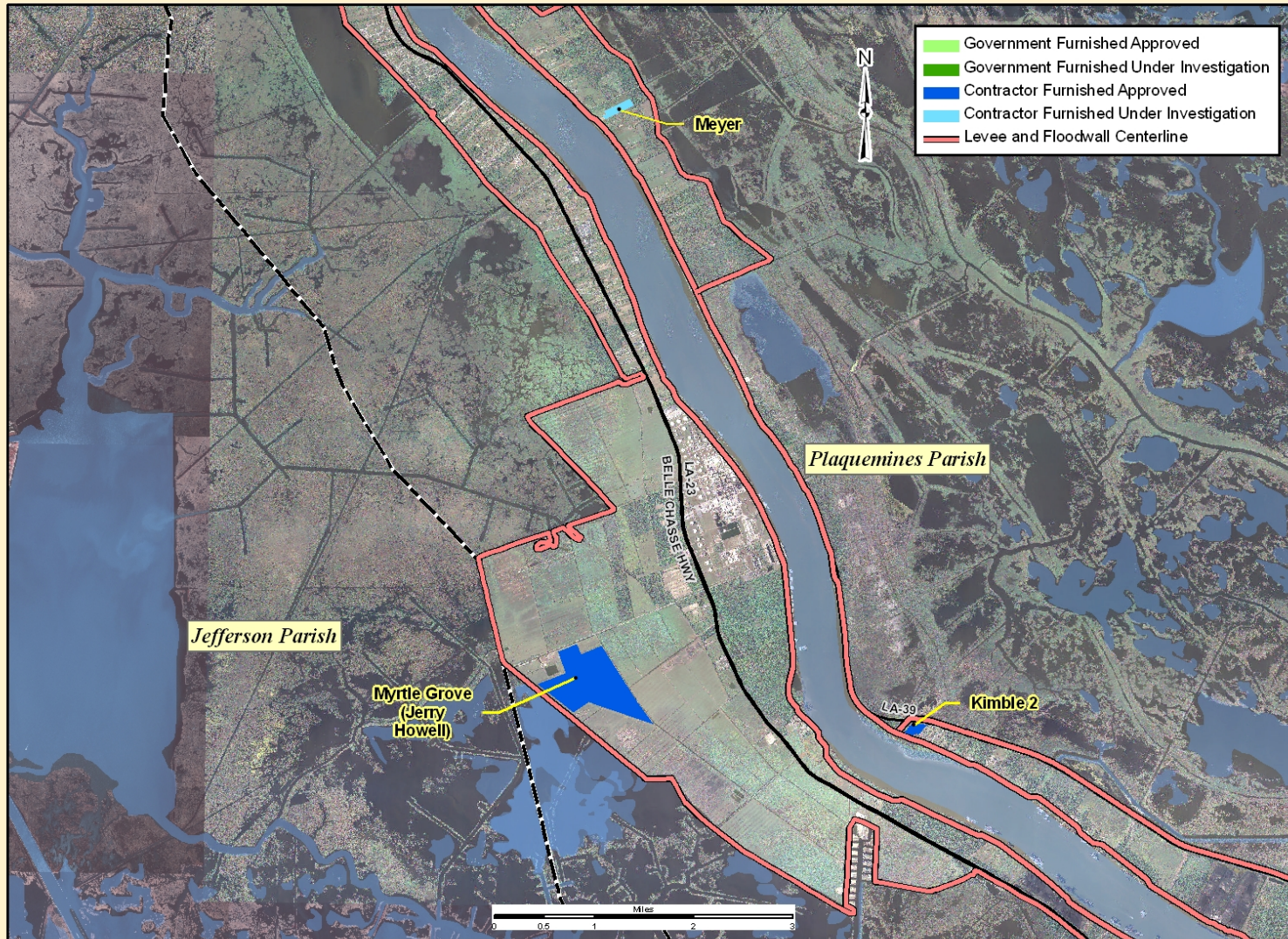


PLAQUEMINES PARISH 1





PLAQUEMINES PARISH 2



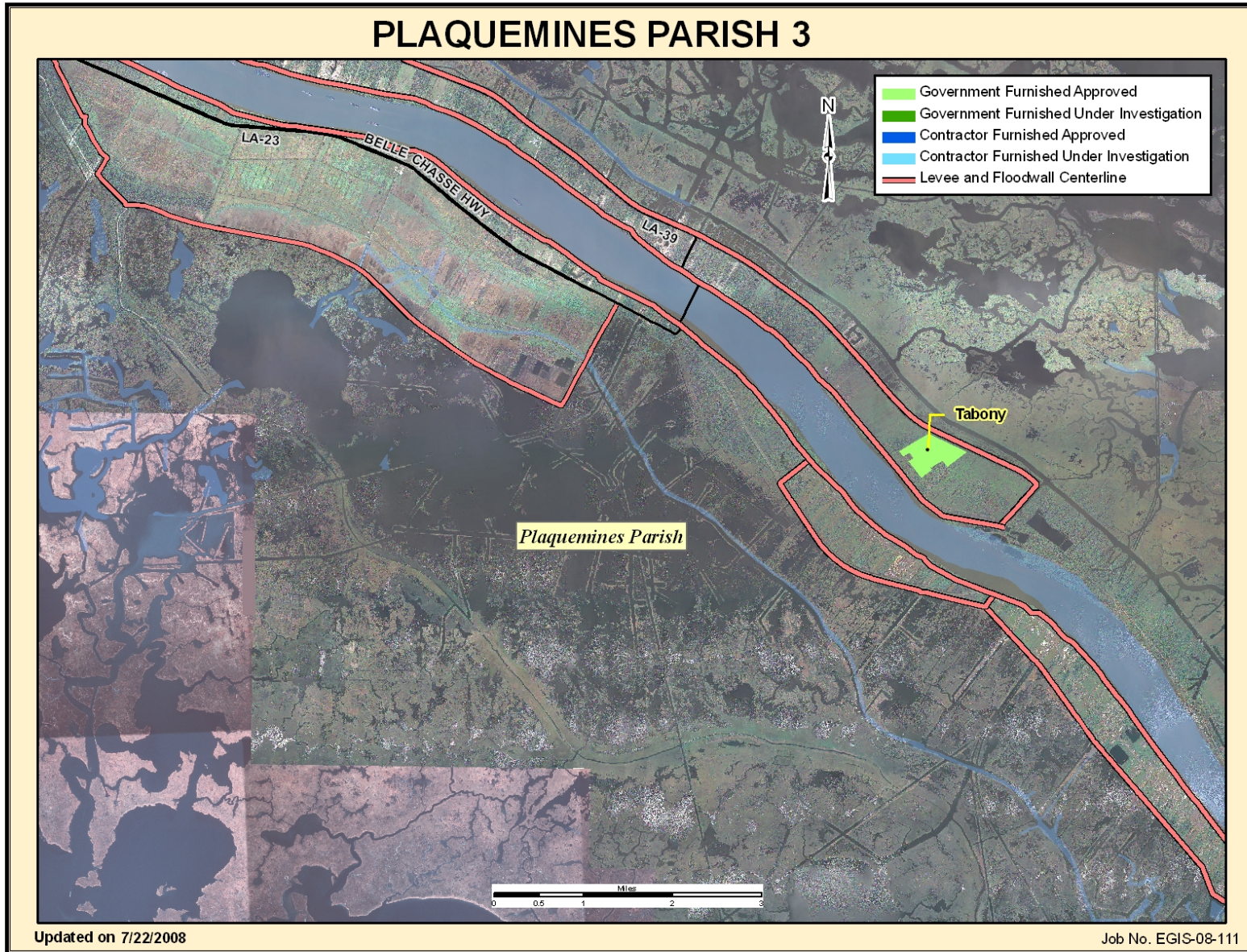
Updated on 7/22/2008

Job No. EGIS-08-111



US Army Corps
of Engineers
New Orleans District

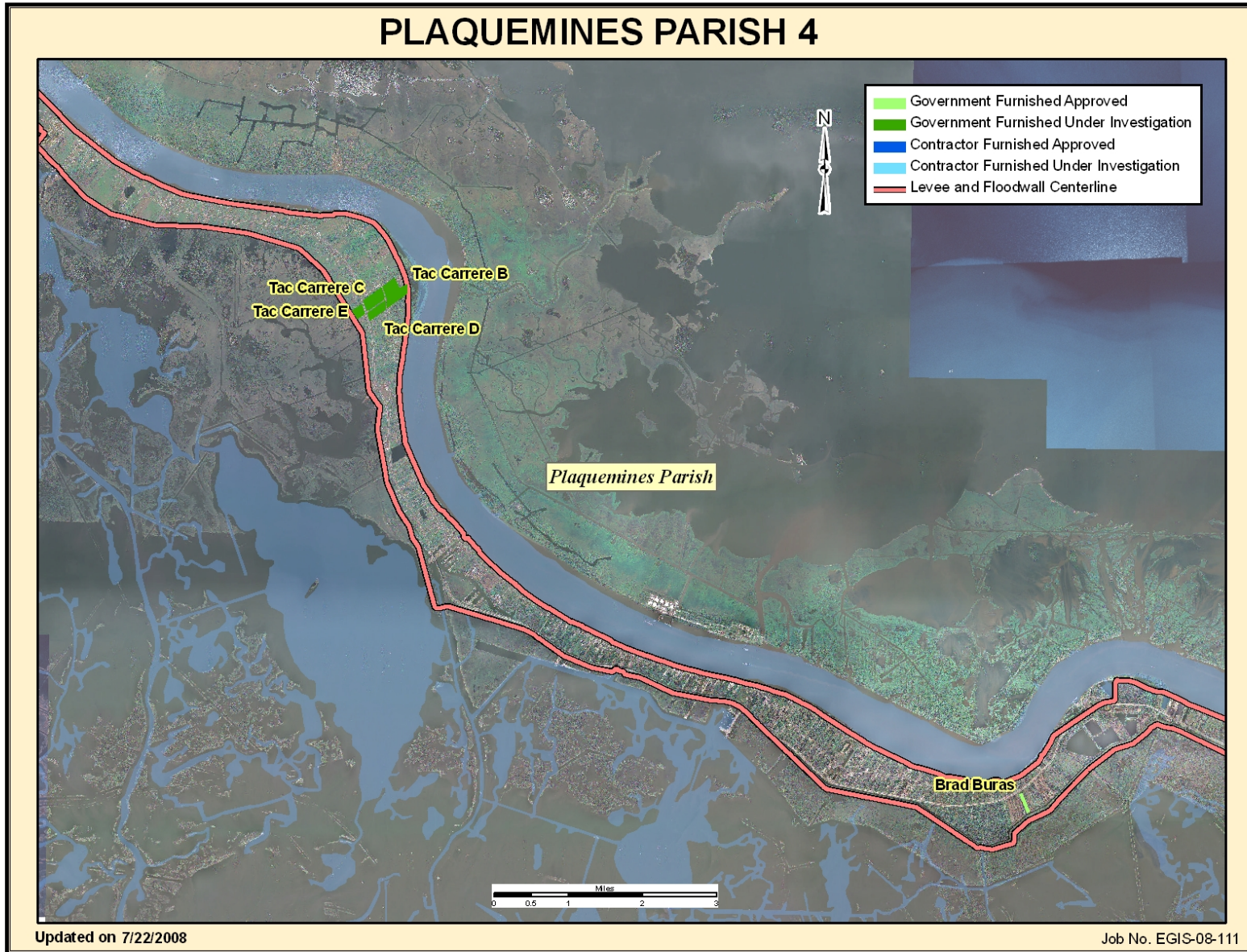
PLAQUEMINES PARISH 3





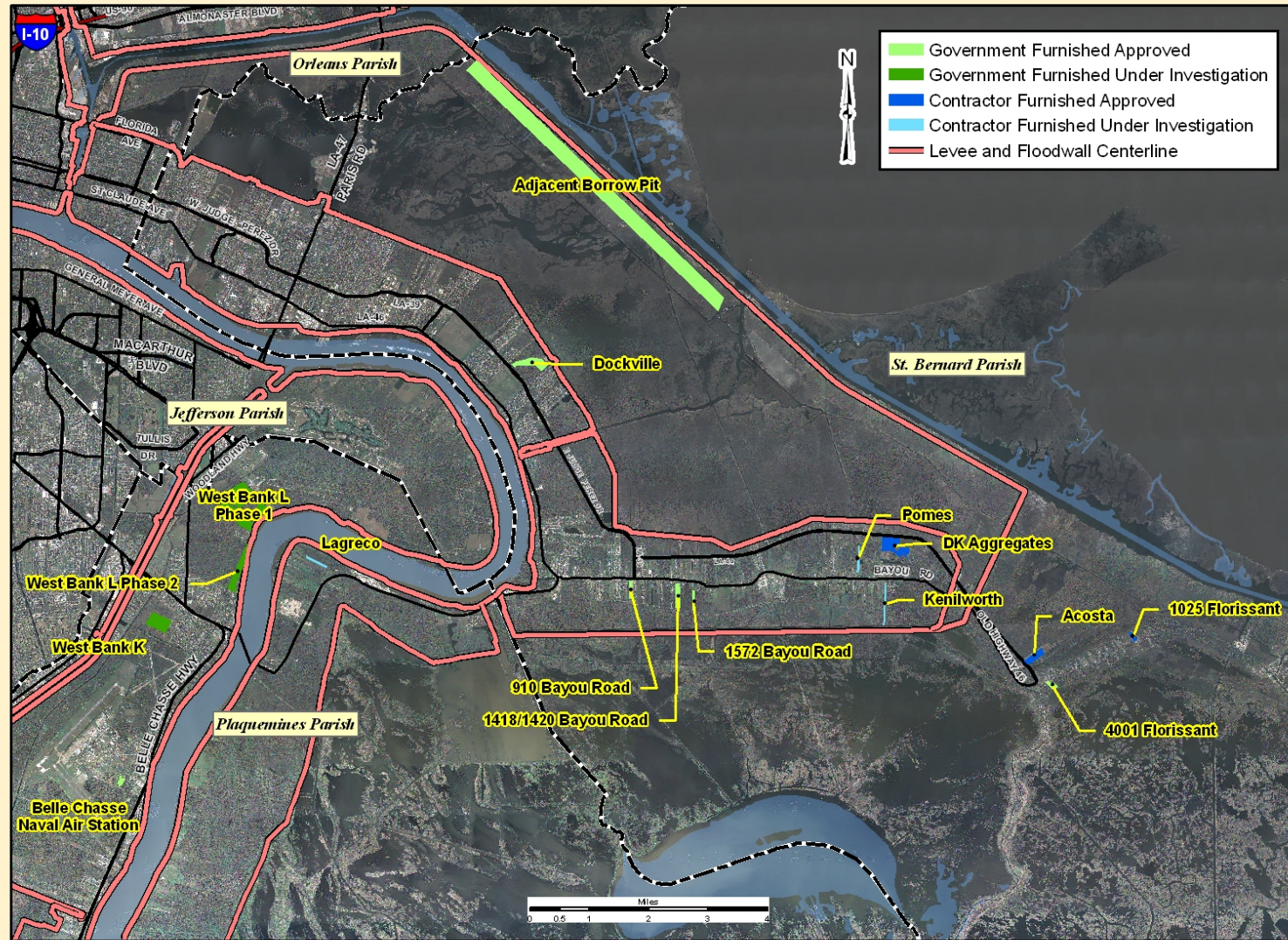
US Army Corps
of Engineers
New Orleans District

PLAQUEMINES PARISH 4





ST. BERNARD PARISH

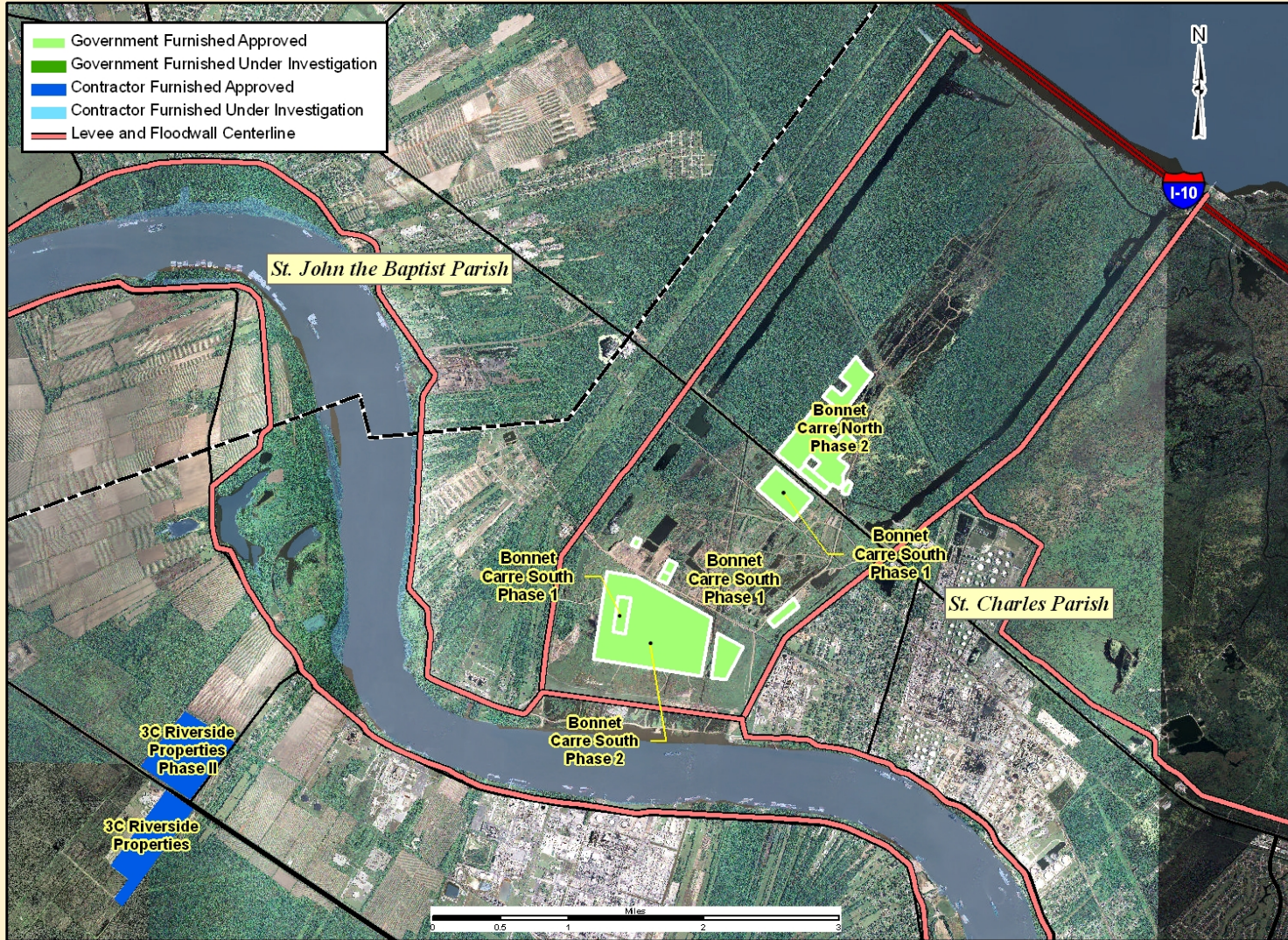


Updated on 7/22/2008

Job No. EGIS-08-111



BONNET CARRE SPILLWAY - ST. CHARLES PARISH

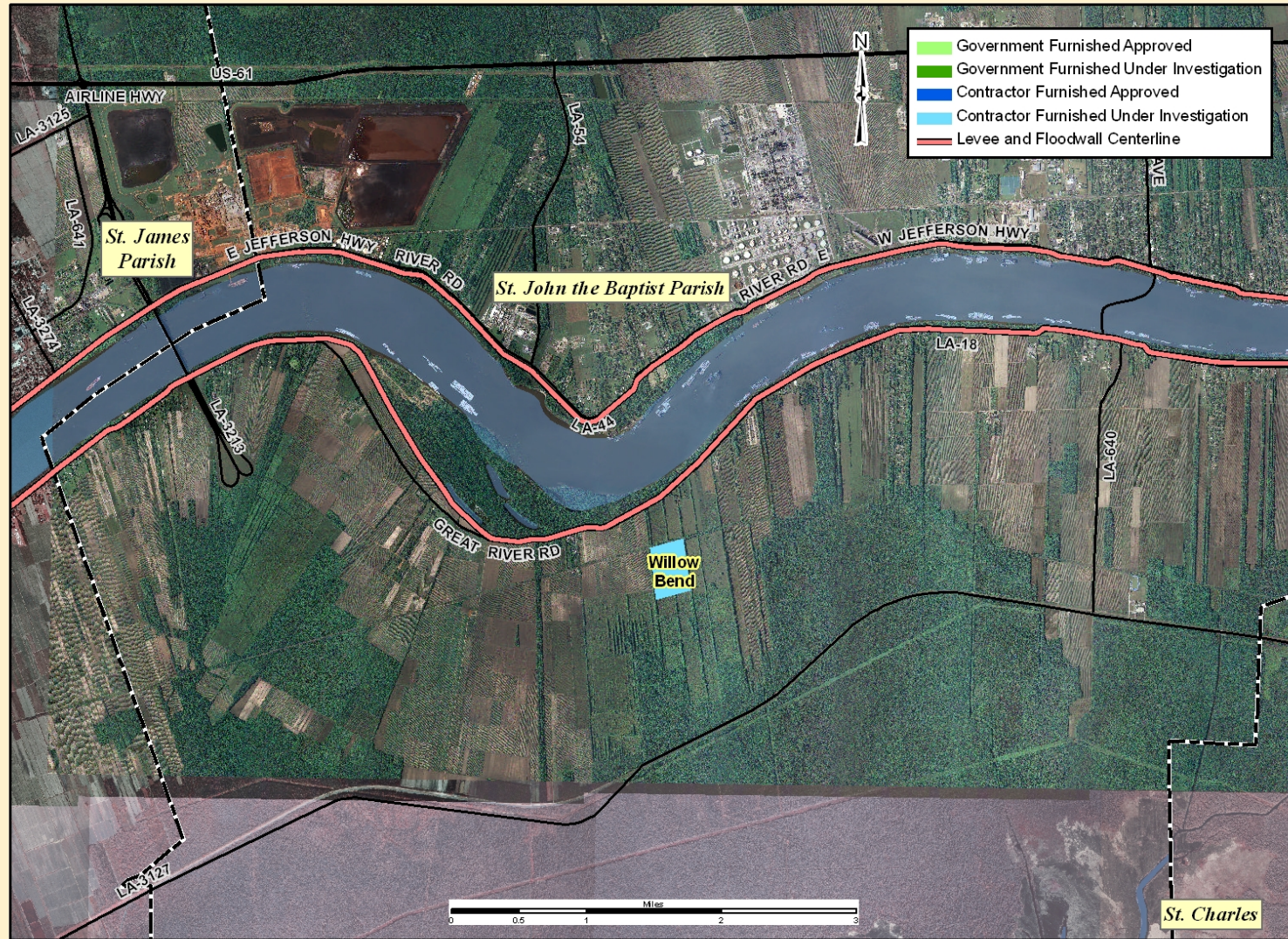


Updated on 7/22/2008

Job No. EGIS-08-111



ST. JOHN THE BAPTIST PARISH



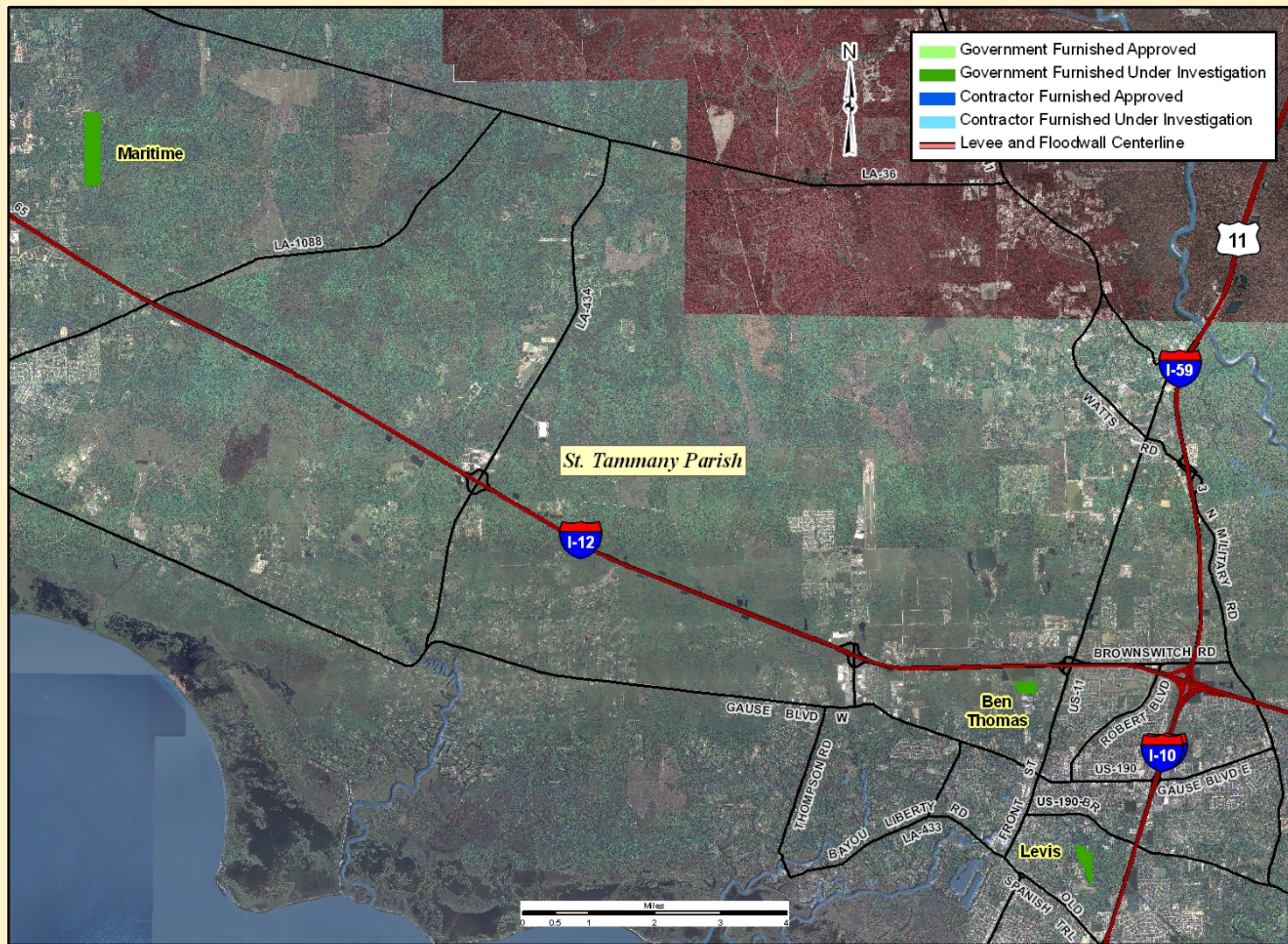
Updated on 7/22/2008

Job No. EGIS-08-111



US Army Corps
of Engineers
New Orleans District

ST. TAMMANY PARISH



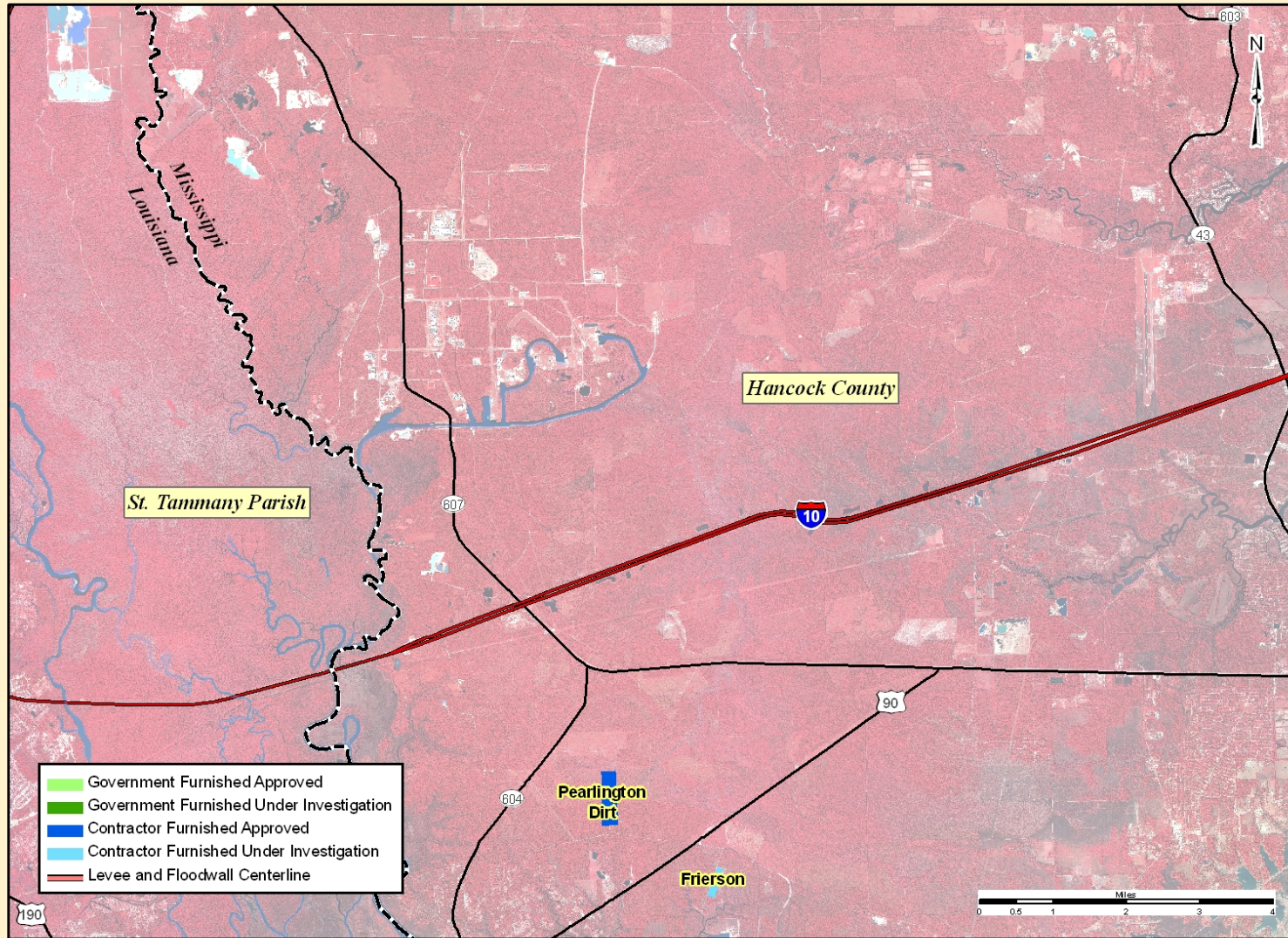
Updated on 7/22/2008

Job No. EGIS-08-111



US Army Corps
of Engineers
New Orleans District

MISSISSIPPI WEST



Updated on 7/22/2008

Job No. EGIS-08-111