



US Army Corps
of Engineers
New Orleans District

Borrow

Earthen levee construction requires a specific type of clay material which compacts well and prevents seepage. This material needs to contain specific amounts of sand, organic material, etc.

Before borrow material can be used for levee construction, soil borings, testing, and environmental clearance needs to be completed. Borrow site investigation can take as long as six to nine months to complete.

Borrow material is normally acquired from a landowner through a real estate transaction. However, the alternative methods of securing borrow, Contractor Furnished or Supply Contract, can be utilized when found to be in the best interest of Government.

Currently the Corps is aggressively pursuing three methods for acquiring borrow material:

Government Furnished - Utilizing this method, the Corps first identifies the borrow source location, then investigates and approves the borrow material as suitable for use. The acquisition of the real estate interest over the land may be in the name of the non-Federal sponsor.

Contractor Furnished – When using this method, the Corps requires a contractor to provide their own borrow material. The Government may provide the contractor with a list of “Contractor Furnished Sites,” but the contractor is ultimately responsible for providing the borrow material for construction. The contractor enters into a contractual agreement with the landowner, not with the Corps, to acquire the borrow material.

Supply Contract – This method allows supply contractors to bid on task orders for the supply of borrow material to be used by the Corps and other contractors for construction of the HSDRRS.





US Army Corps
of Engineers
New Orleans District

Greater New Orleans Hurricane and Storm Damage Risk Reduction System Borrow Sources

▪ Lake Pontchartrain & Vicinity Project Borrow Needs

- New Orleans East: 8,300,000 cy
- New Orleans Metro: 260,000 cy
- Jefferson/St. Charles: 4,800,000 cy
- St. Bernard Parish: 3,400,000 cy

▪ Westbank & Vicinity Project Borrow Needs

- Belle Chasse: 2,000,000 cy
- Gretna/Algiers: 320,000 cy
- Harvey/Westwego/Lake Cataouatche: 10,200,000 cy

▪ Other Projects

- Plaquemines Parish: 31,000,000 cy



US Army Corps
of Engineers
New Orleans District

Proposed and Approved Borrow Sources

IER 18 – Government Furnished Borrow

Approved 2/21/2008

Bonnet Carre North, St. Charles Parish
Churchill Farms, Jefferson Parish
Westbank Site G*, Jefferson Parish
Maynard, Orleans Parish
Cummings North, Orleans Parish
Dockville, St. Bernard Parish
910 Bayou Road, St. Bernard Parish
1418/1420 Bayou Road, St. Bernard Parish
1572 Bayou Road, St. Bernard Parish
4001 Florissant Highway, St. Bernard Parish
Belle Chasse, Plaquemines Parish
Triumph, Plaquemines Parish

IER 19 – Pre-Approved Contractor Furnished Borrow

Approved 2/14/2008

St. Gabriel, Iberville Parish
River Birch 1 and 2, Jefferson Parish
Eastover, Orleans Parish
Pearlington, Hancock County, MS
Gatien Navy, St. Bernard Parish
Sylvia Guillot, St. Bernard Parish
DK Aggregates, St. Bernard Parish
Kimble #2, Plaquemines Parish

IER 22 – Government Furnished Borrow # 2

Approved 5/30/08

Brad Buras, Plaquemines Parish
Chauvin*, Plaquemines Parish
Tabony, Plaquemines Parish
Westbank N, Plaquemines Parish
Westbank F, Jefferson Parish
Westbank I, Jefferson Parish

IER 23 – Pre-Approved Contractor Furnished

Borrow # 2

Approved 5/8/08

1025 Florissant Hwy., St. Bernard Parish
Acosta, St. Bernard Parish
3C Riverside, St. Charles Parish
Myrtle Grove, Plaquemines Parish
Pearlington Dirt 2, Hancock County, MS

IER 25 – Government Furnished Borrow # 3

Approved 2/3/09

Stumpf 1 and 2, Orleans Parish
Westbank D, Jefferson Parish
Westbank E 1 and 2, Jefferson Parish
Tac Carrere, Plaquemines Parish

IER 26 – Pre-Approved Contractor Furnished Borrow # 3

Approved 10/20/08

Willswood, Jefferson Parish
South Kenner Road, Jefferson Parish
Meyer, Plaquemines Parish
Willow Bend, St. John the Baptist
Frierson, Hancock County, MS

IER 28 – Government Furnished Borrow #4

Spring 2009

Bazile, Plaquemines Parish
Crovetto, St. Bernard Parish

IER 29 – Pre-Approved Contractor Furnished Borrow # 4

Spring 2009

Tammany Holding Corp, St. Tammany
Willow Bend 2, St. John the Baptist
3C Riverside, St. Charles Parish
Eastover 2, Orleans

IER 30 - Supply Contract Borrow Material

Summer 2009

Big Shake, St. John the Baptist
Pearlington Dirt Phase II, Hancock County, MS
Willow Bend Property, St. John the Baptist
Port Bienville, Hancock County, MS
Acosta, St. Bernard
Henley, Hancock County, MS

IER 31 - Government Furnished Borrow Material #5

Winter 2009

Westbank L 1, Plaquemines Parish
Westbank L II, Plaquemines Parish
Westbank K, Plaquemines Parish
West Bank M, Plaquemines Parish

IER 32 - Pre-Approved Contractor Furnished Borrow Material #5

Winter 2009

Methe, St. Bernard
Najolia, St. Bernard
EH Mitchell, St. Tammany
King Mine, Hancock County, MS
Contreras Dirt - Cell Z, St. Bernard
Bocage Plantation, Ascension
Cummings South, Orleans Parish.

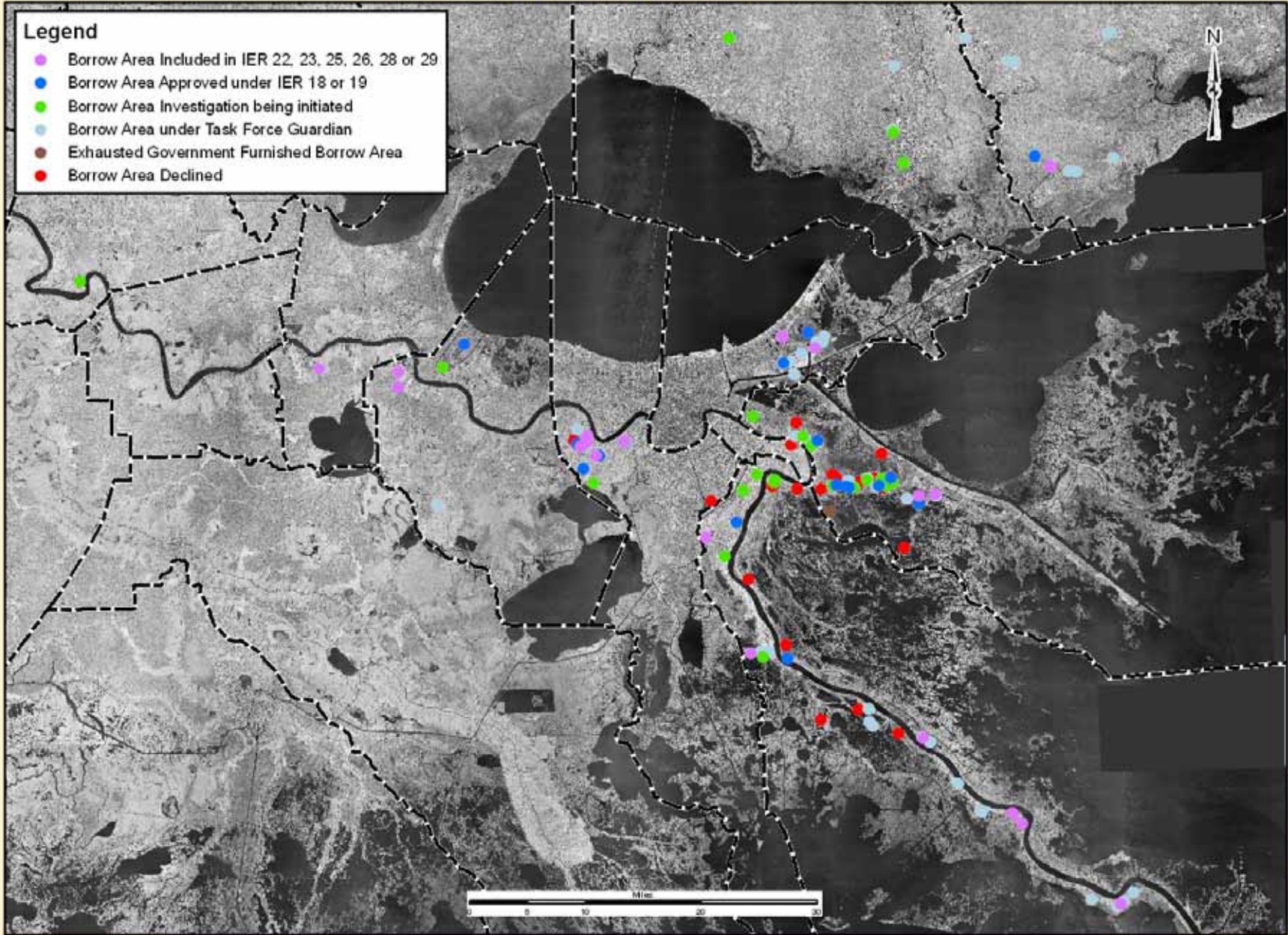
IER: Individual Environmental Report.
National Environmental Policy Act compliance for the
HSDRRS takes the form of multiple IERs that examine
smaller portions of the proposed HSDRRS. The work will
culminate in a Comprehensive Environmental Document
that will integrate the findings of all the previously
prepared IERs, describe the work being completed as a
system, and examine how each project is interrelated to
the overall work being done. Groups of proposed borrow
areas are investigated in each IER.

* Borrow site does not meet Corps geotechnical criteria, and will not be used for the HSDRRS.

Borrow Areas

Legend

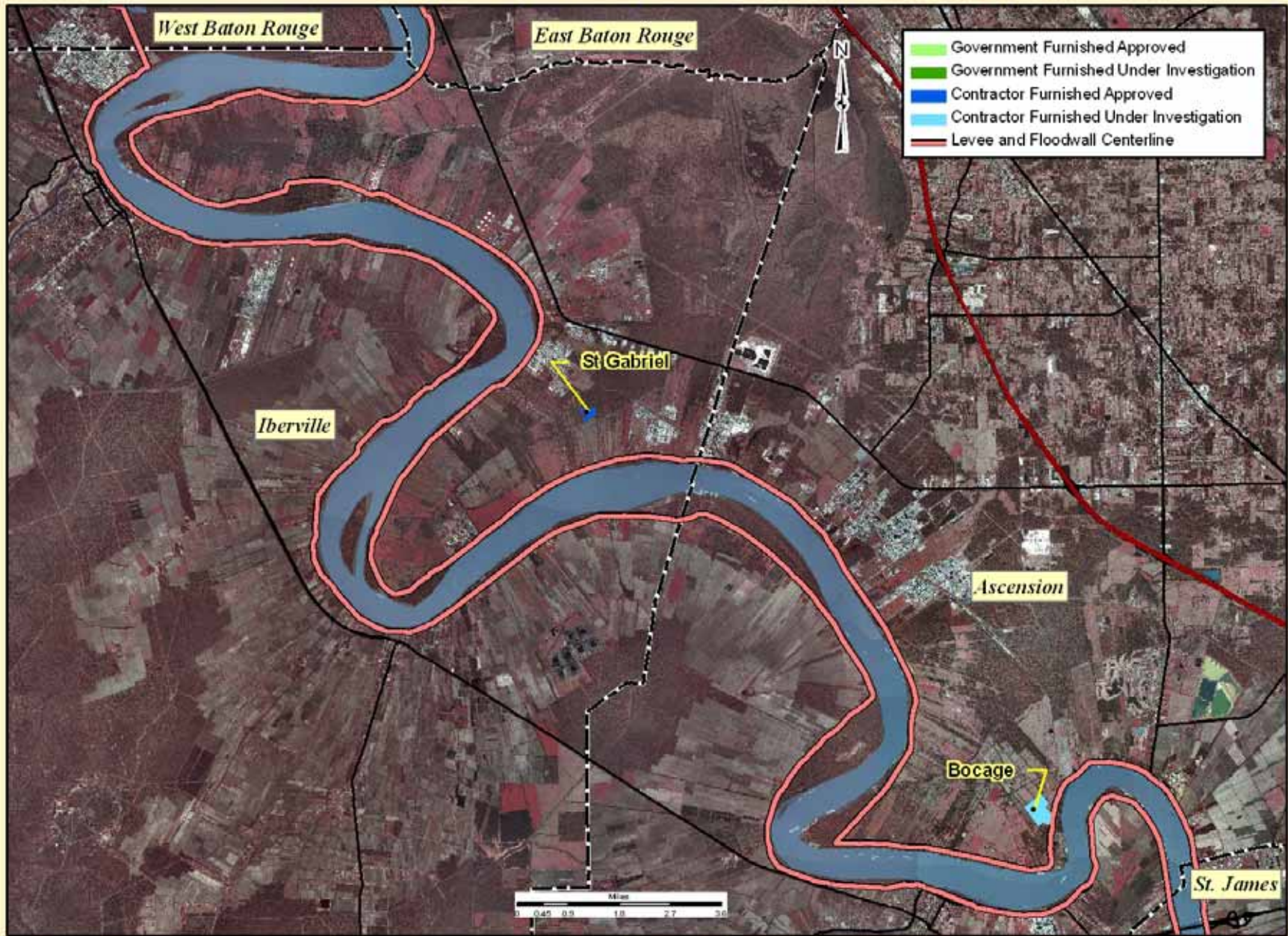
- Borrow Area Included in IER 22, 23, 25, 26, 28 or 29
- Borrow Area Approved under IER 18 or 19
- Borrow Area Investigation being initiated
- Borrow Area under Task Force Guardian
- Exhausted Government Furnished Borrow Area
- Borrow Area Declined



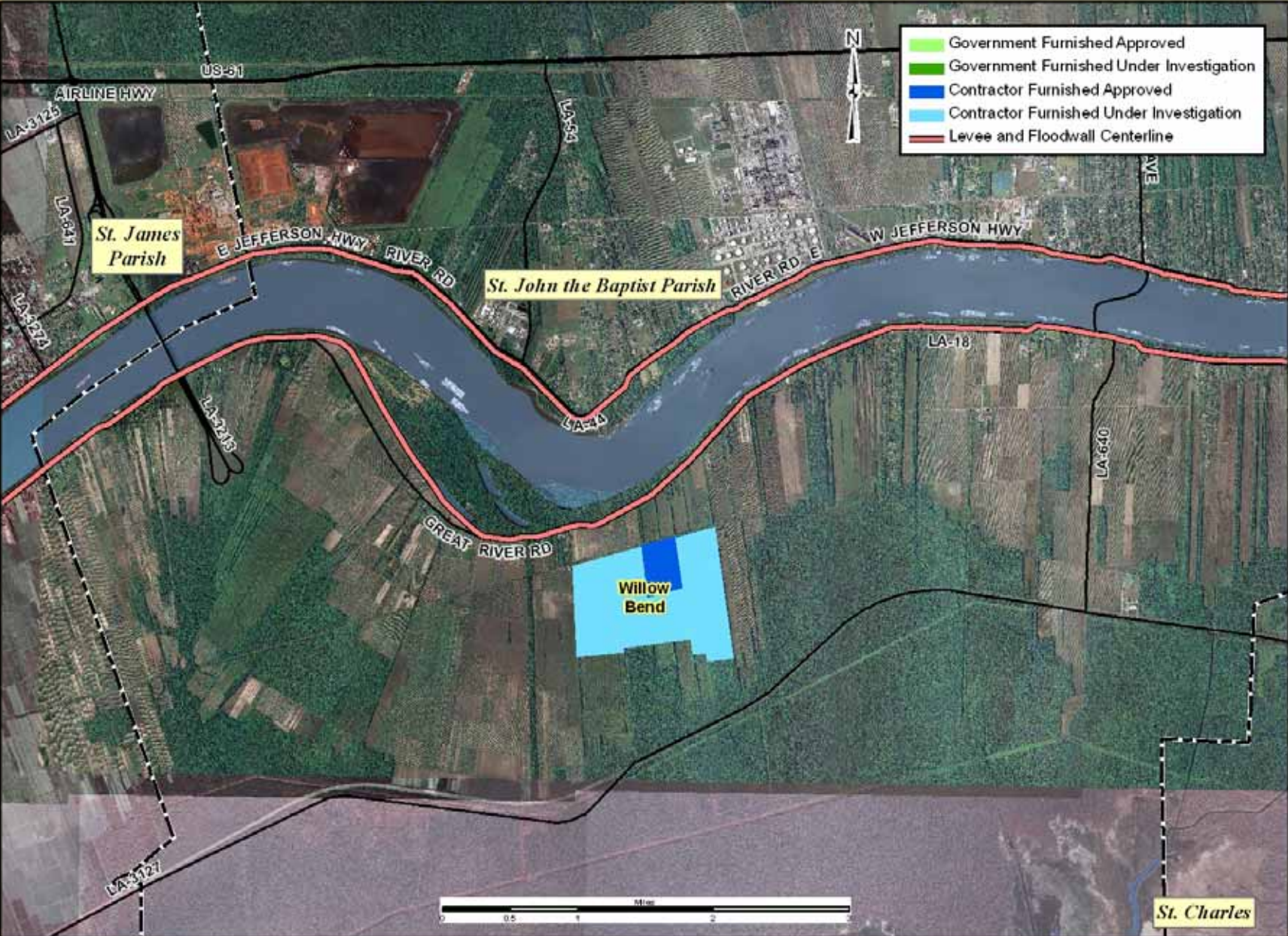
Updated on 5/5/2009

Job No. EGIS-09-037

IBERVILLE PARISH AND ASCENSION PARISH



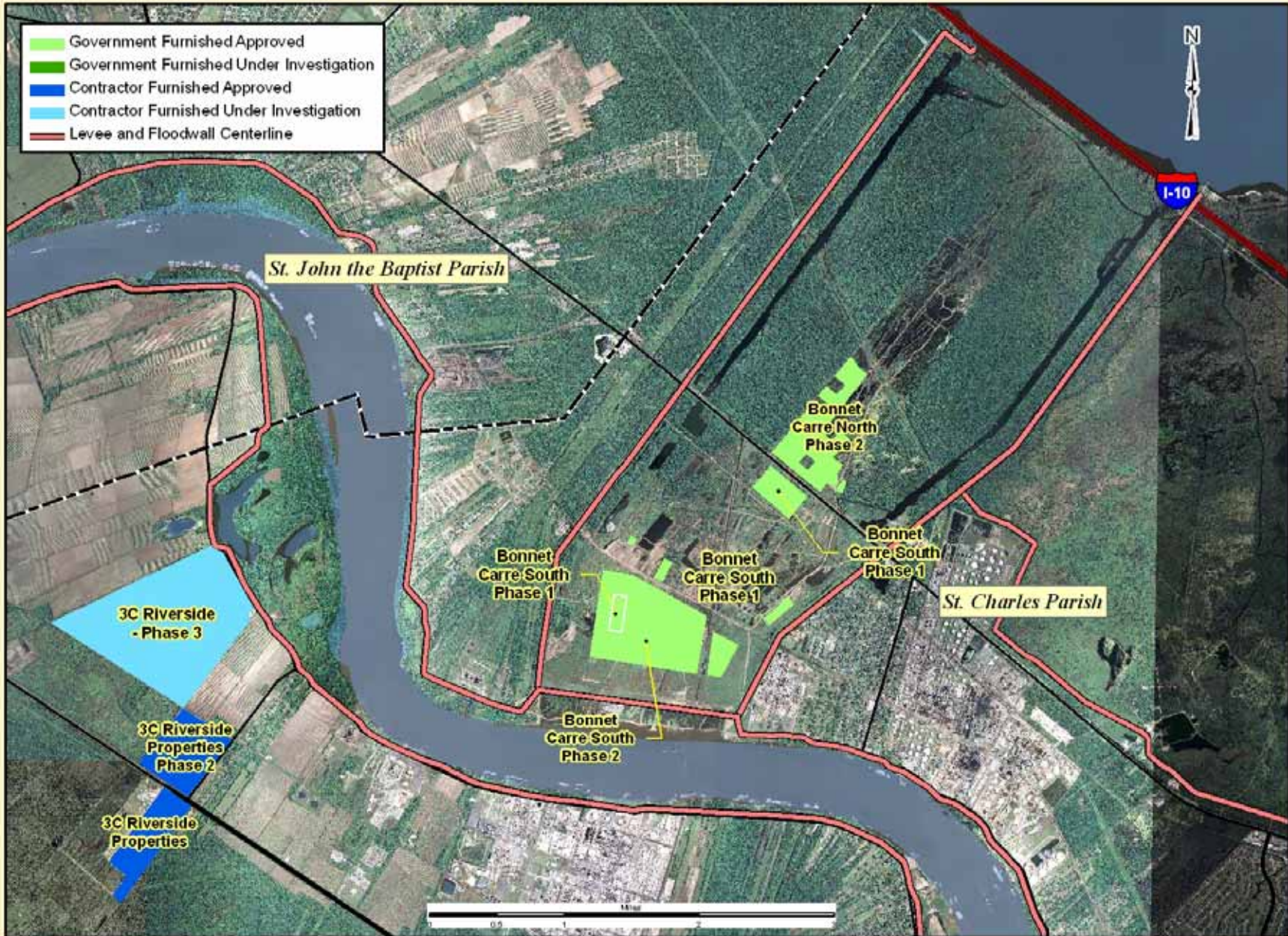
ST. JOHN THE BAPTIST PARISH



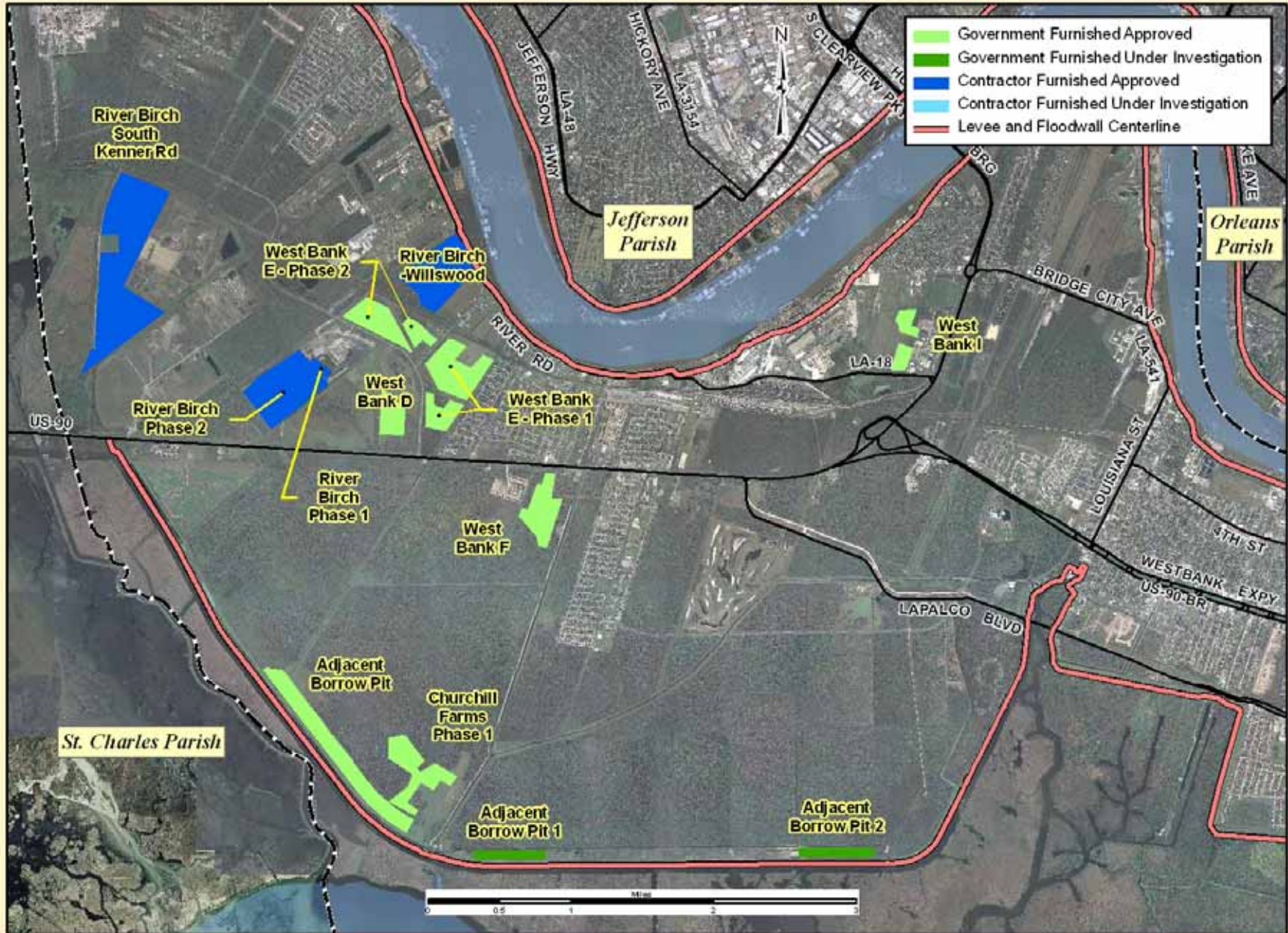
Updated on 5/5/2009

Job No. EGIS-09-037

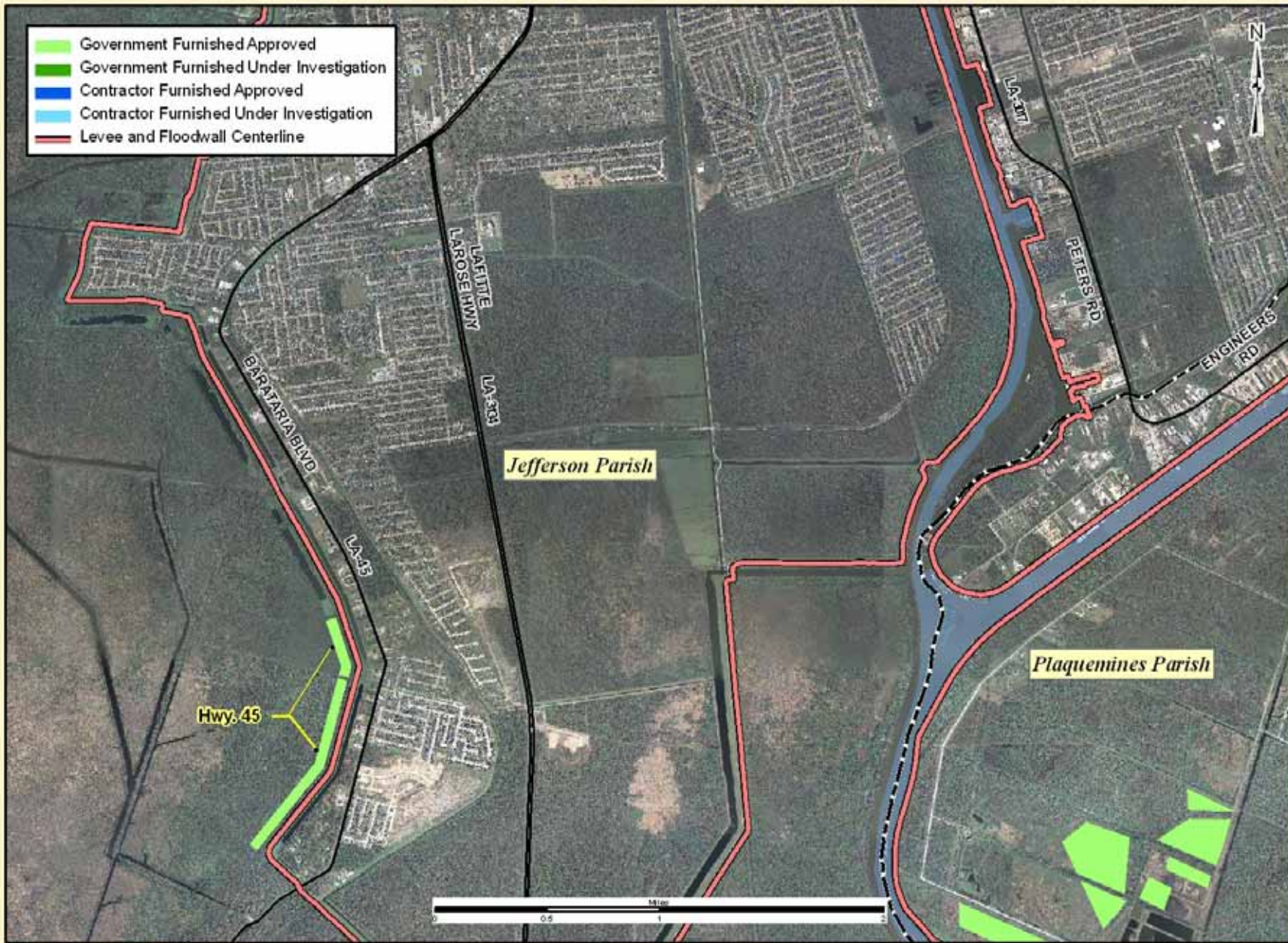
BONNET CARRE SPILLWAY - ST. CHARLES PARISH



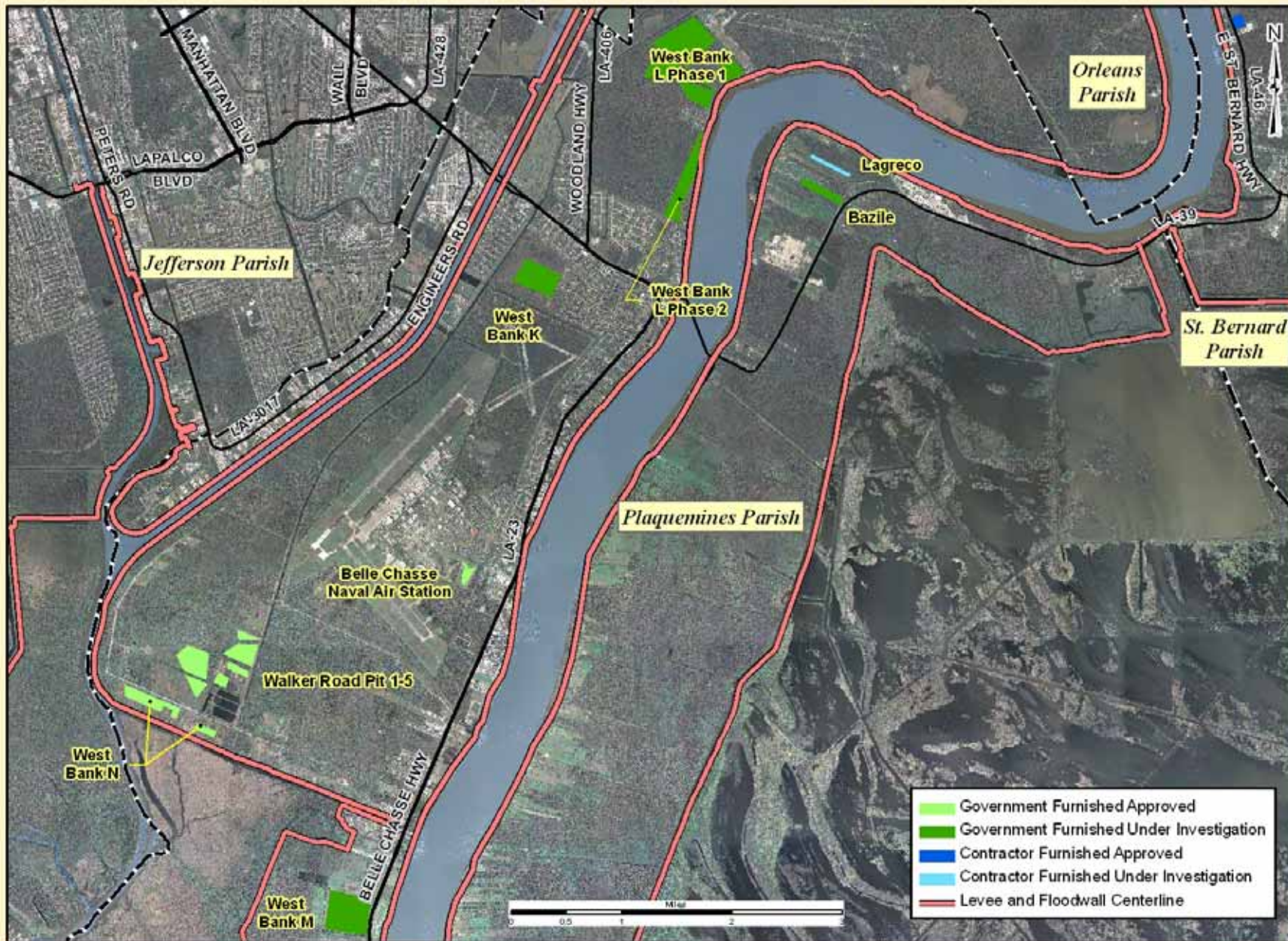
WEST BANK - JEFFERSON PARISH



WEST BANK 2 - JEFFERSON PARISH



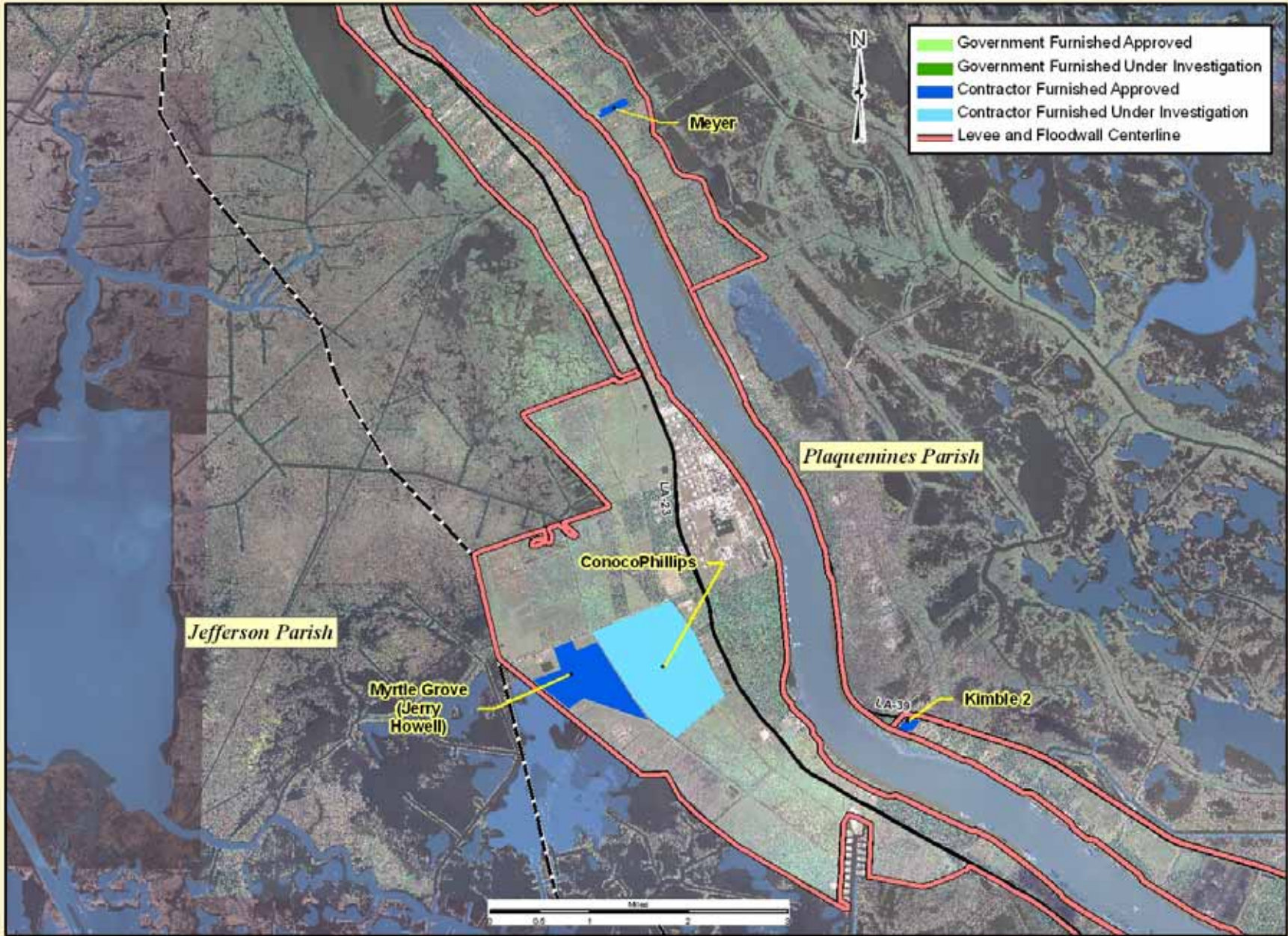
PLAQUEMINES PARISH 1



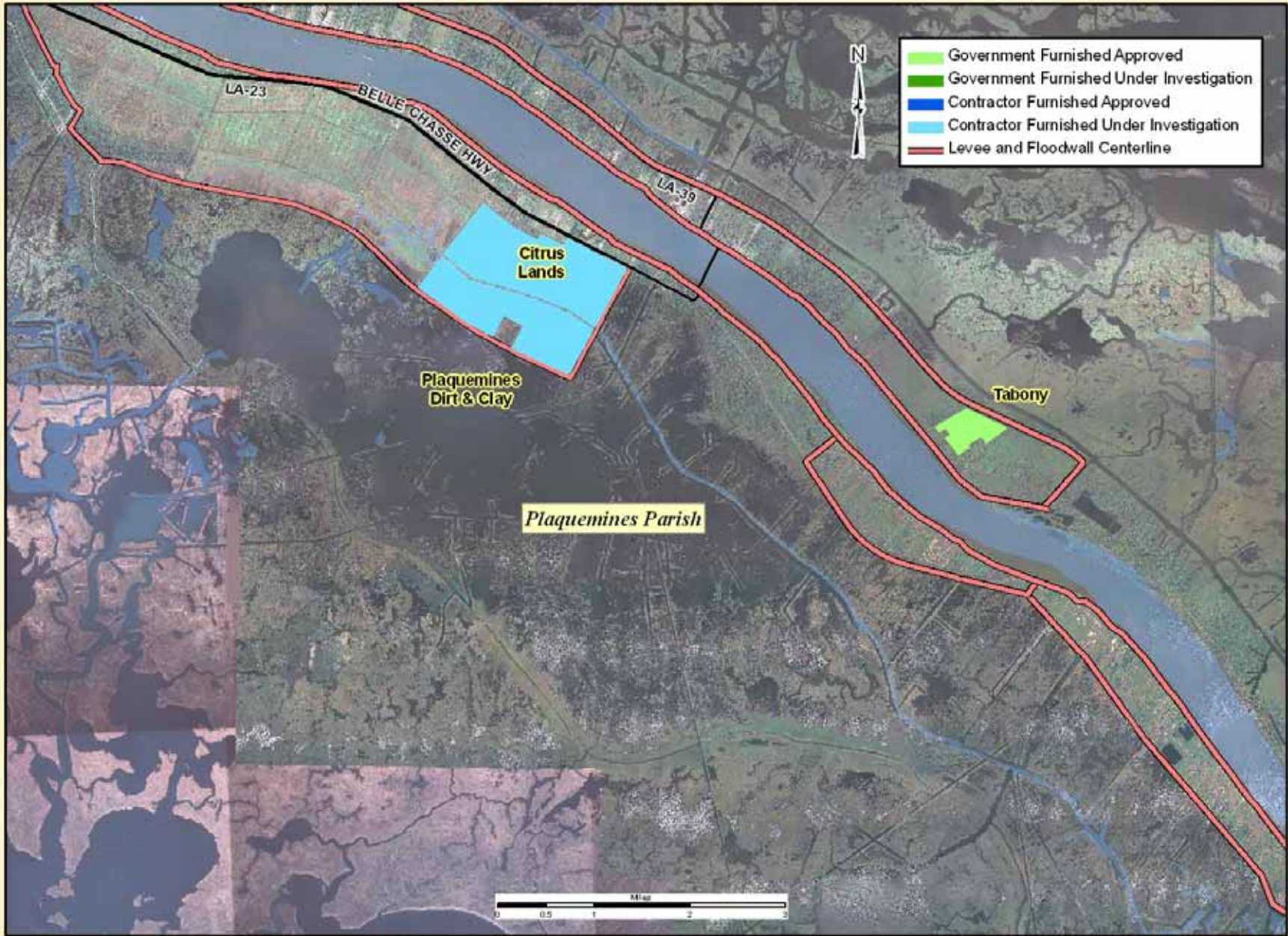
Updated on 5/5/2009

Job No. EGIS-09-037

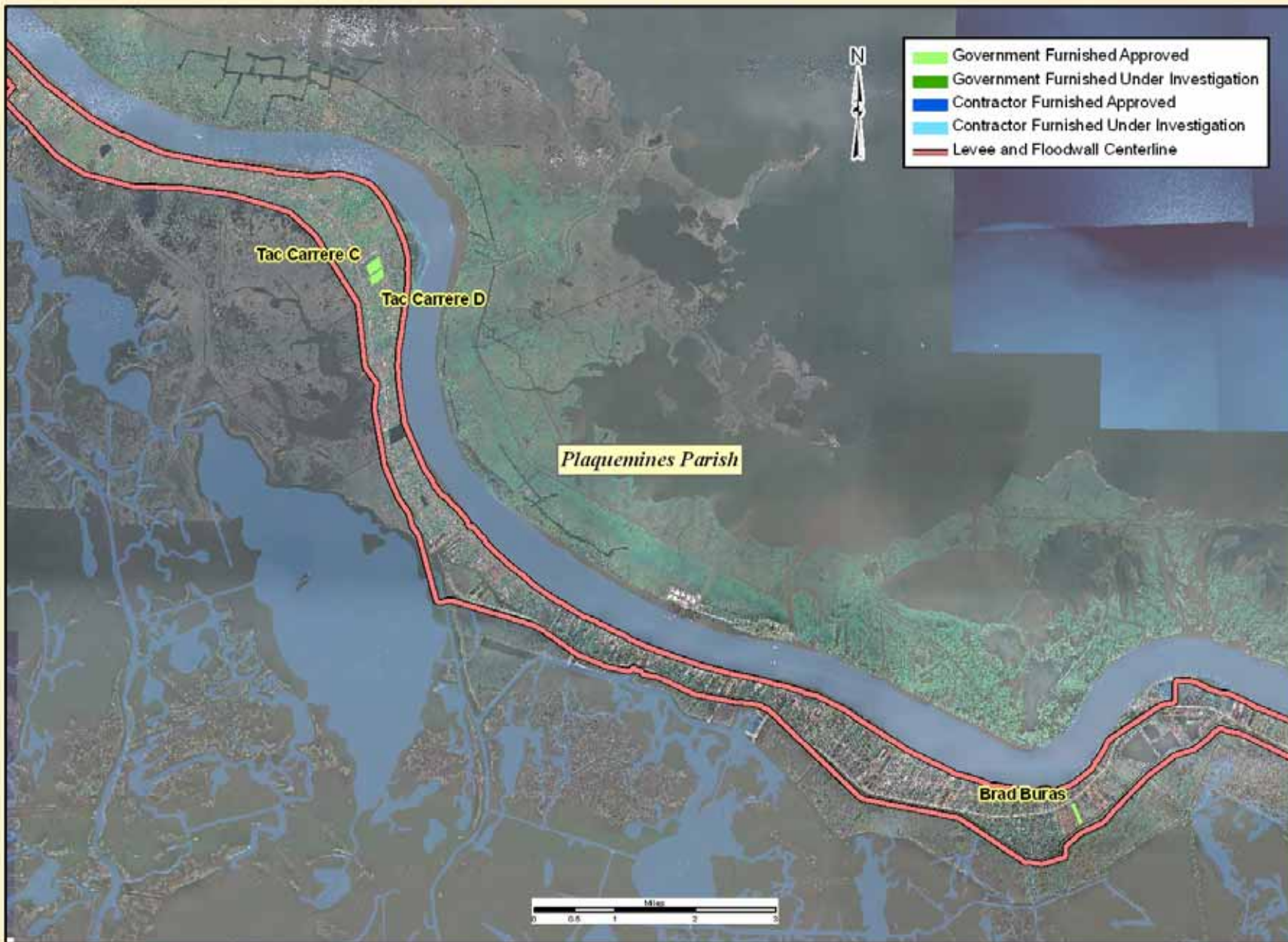
PLAQUEMINES PARISH 2



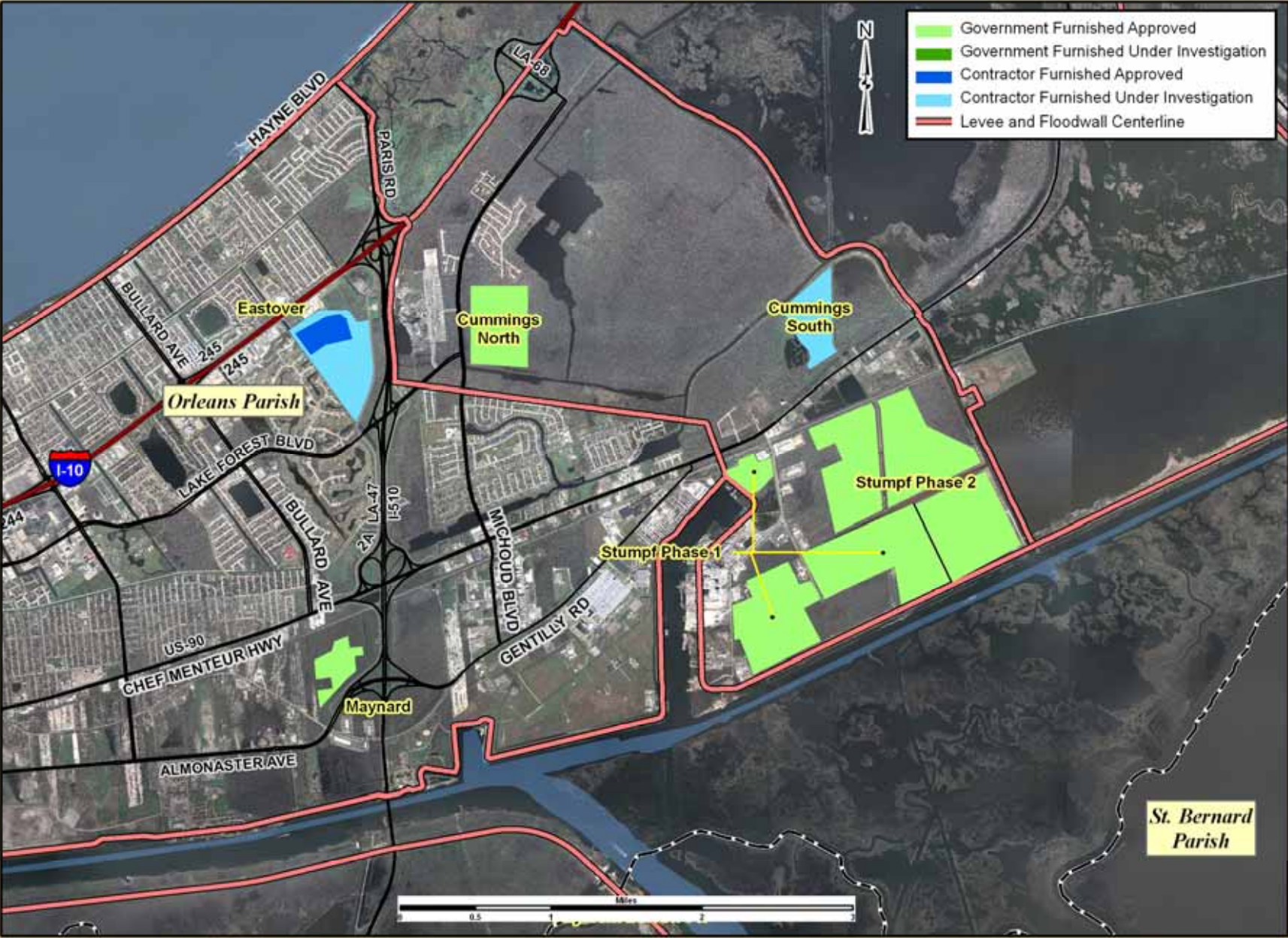
PLAQUEMINES PARISH 3



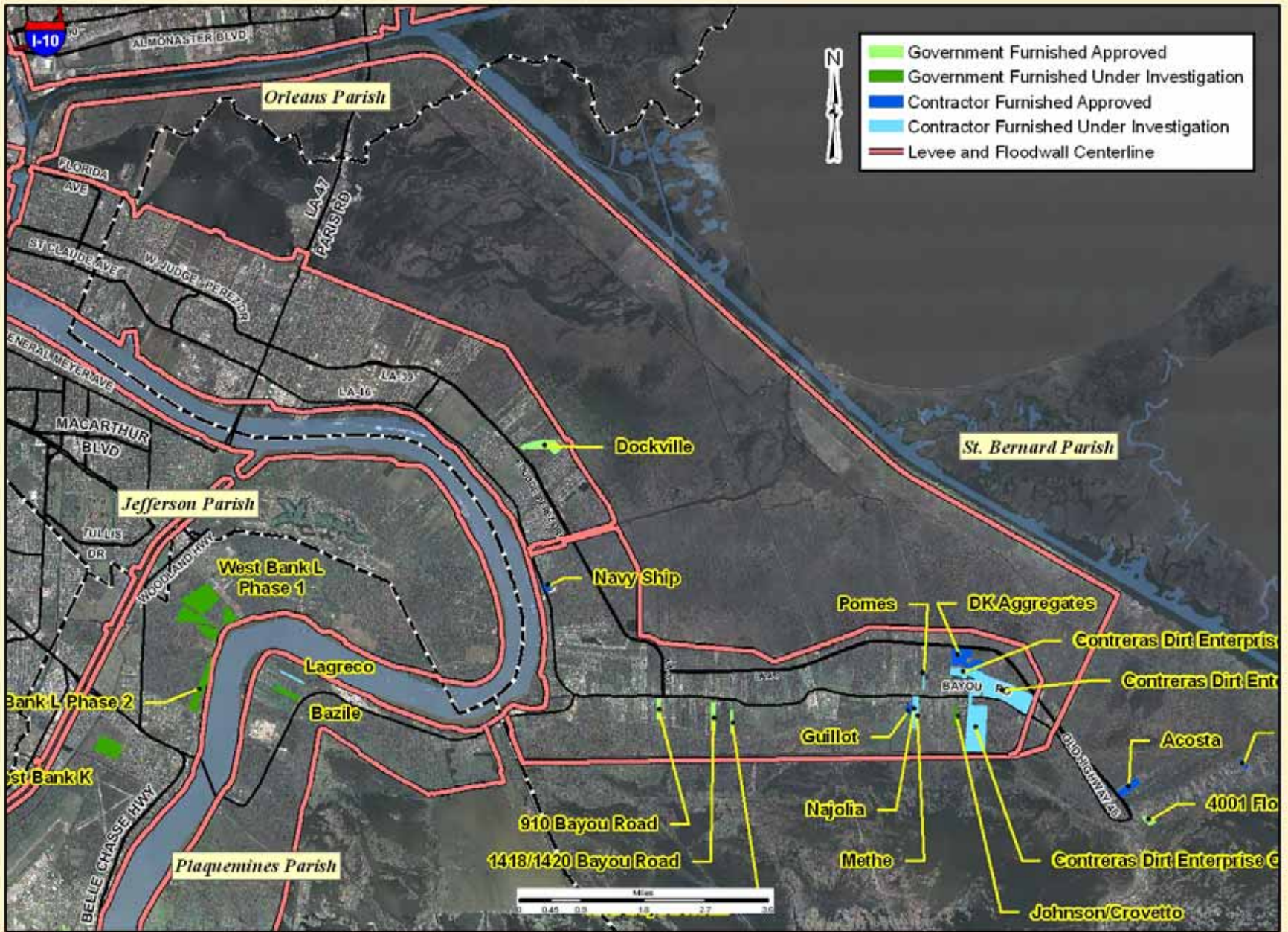
PLAQUEMINES PARISH 4



NEW ORLEANS EAST - ORLEANS PARISH



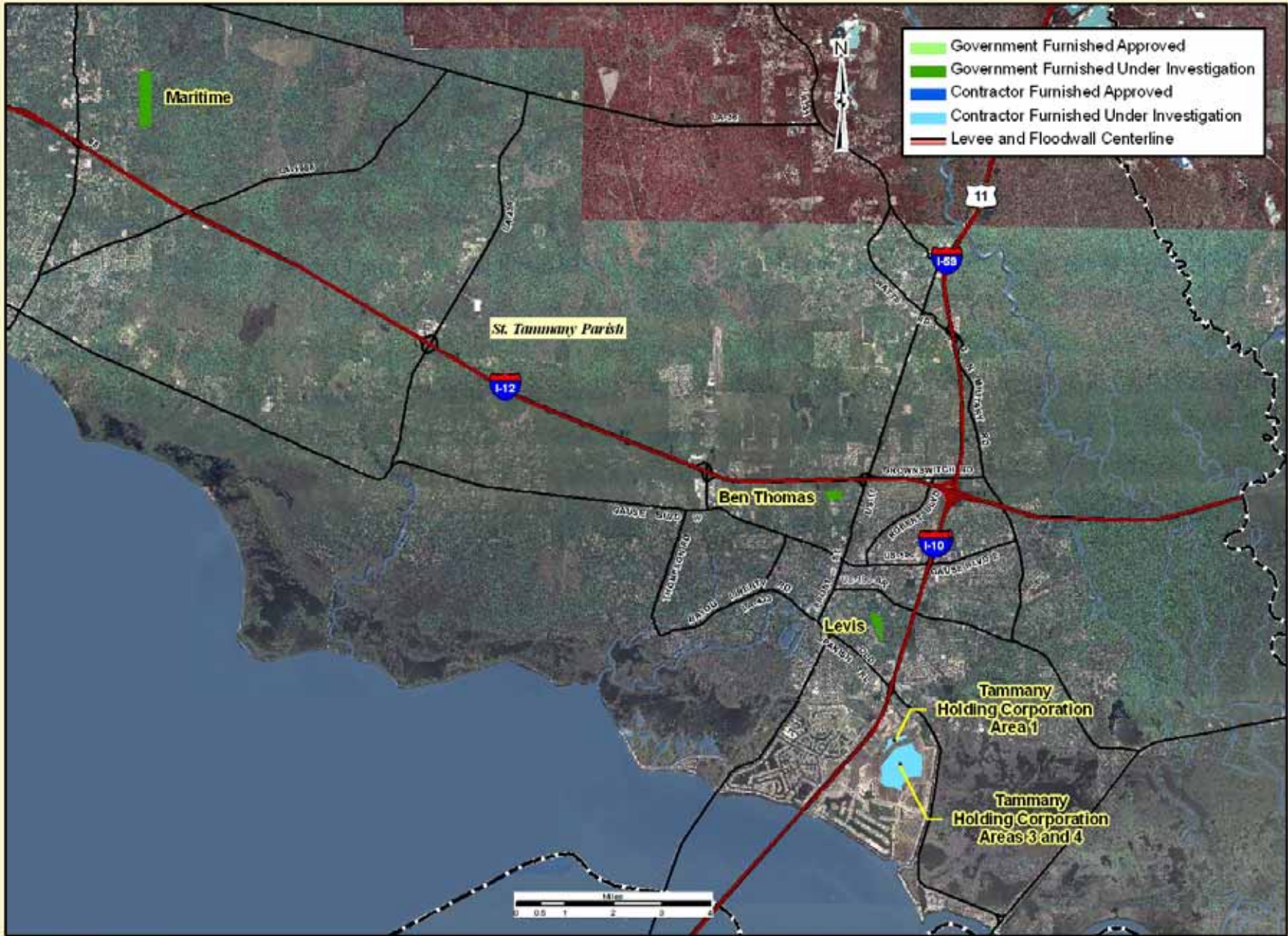
ST. BERNARD PARISH



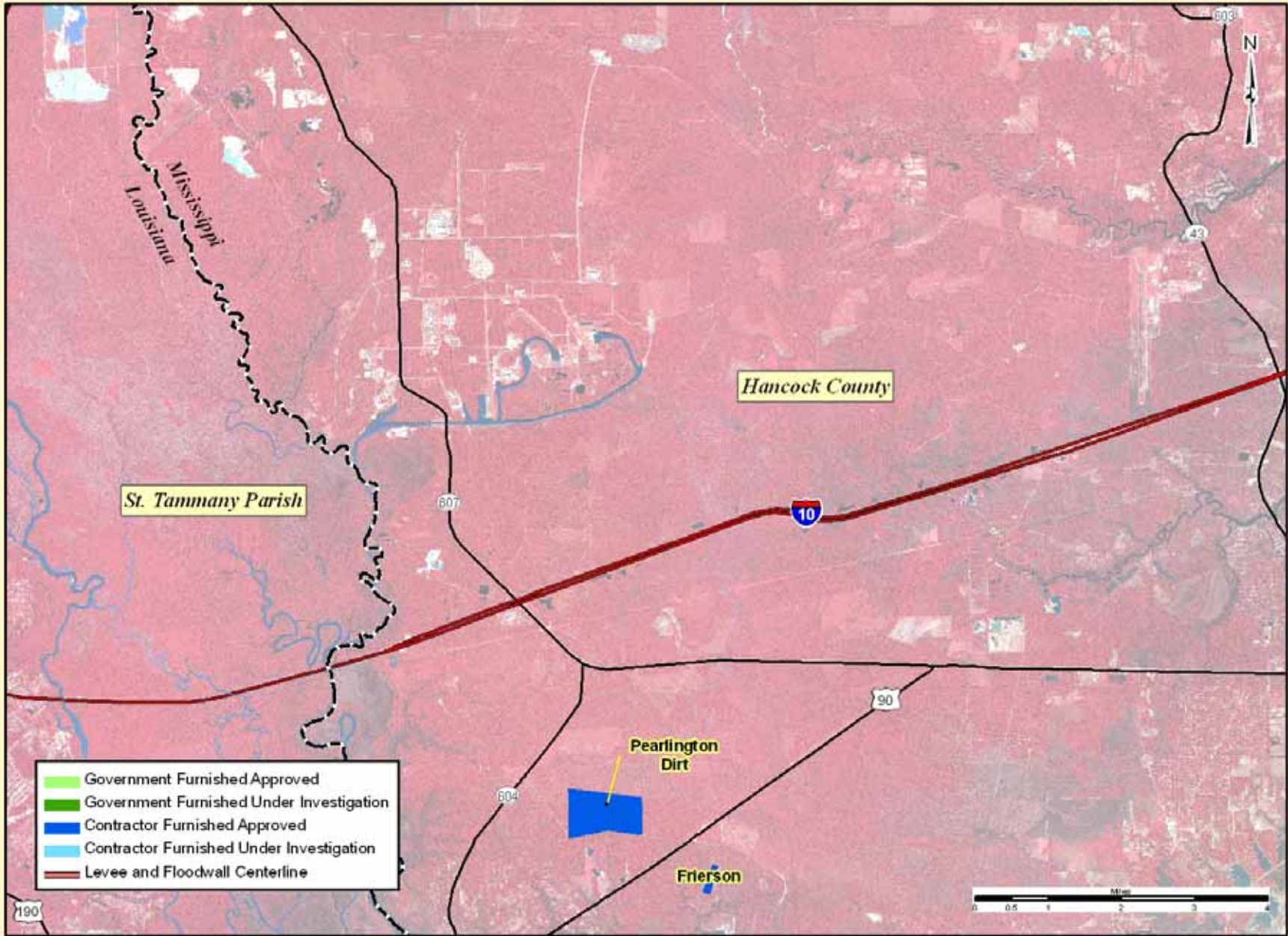
Updated on 5/12/2009

Job No. EGIS-09-037

ST. TAMMANY PARISH



MISSISSIPPI WEST



Updated on 5/5/2009

Job No. EGIS-09-037