

# Borrow

The U.S. Army Corps of Engineers, New Orleans District is in the midst of an unprecedented search for clay material, also known as borrow, to rebuild and reinforce the Greater New Orleans Hurricane and Storm Damage Risk Reduction System (HSDRRS) in southeast Louisiana.

Earthen levee construction requires a specific type of clay material which compacts well and prevents seepage. This material needs to contain specific amounts of sand, organic material, etc.

Before borrow material can be used for levee construction, soil borings, testing, and environmental clearance needs to be completed. Borrow site investigation can take as long as six to nine months to complete.

Borrow material is normally acquired from a landowner through a real estate transaction. However, the alternative methods of securing borrow, Contractor Furnished or Supply Contract, can be utilized when found to be in the best interest of Government.

Currently the Corps is aggressively pursuing three methods for acquiring borrow material:

Government Furnished - Utilizing this method, the Corps first identifies the borrow source location, then investigates and approves the borrow material as suitable for use. The acquisition of the real estate interest over the land may be in the name of the non-Federal sponsor.

Contractor Furnished – When using this method, the Corps requires a contractor to provide their own borrow material. The Government may provide the contractor with a “Clay Source List,” but the contractor is ultimately responsible for providing the borrow material for construction. The contractor enters into a contractual agreement with the landowner, not with the Corps, to acquire the borrow material.

Supply Contract – This method allows supply contractors to bid on task orders for the supply of borrow material to be used by the Corps and other contractors for construction of the HSDRRS.





US Army Corps  
of Engineers  
New Orleans District

# Greater New Orleans Hurricane and Storm Damage Risk Reduction System Borrow Sources

- **Lake Pontchartrain & Vicinity Project Borrow Needs**
  - New Orleans East: 2,500,000 cy
  - St. Bernard Parish: 560,000 cy
- **Westbank & Vicinity Project Borrow Needs**
  - Belle Chasse: 110,000 cy
  - Gretna/Algiers: 192,000 cy
  - Harvey/Westwego/Lake Cataouatche: 364,000 cy
- **Other Projects**
  - Plaquemines Parish: 49,400,000 cy
  - Mississippi River Levees: 2,100,000 cy



# Proposed and Approved Borrow Sources

## **IER 18 – Government Furnished Borrow**

**Approved 2/21/2008**

Bonnet Carre North, St. Charles Parish  
Churchill Farms, Jefferson Parish  
Westbank Site G\*, Jefferson Parish  
Maynard, Orleans Parish  
Cummings North, Orleans Parish  
Dockville, St. Bernard Parish  
910 Bayou Road, St. Bernard Parish  
1418/1420 Bayou Road, St. Bernard Parish  
1572 Bayou Road, St. Bernard Parish  
4001 Florissant Highway, St. Bernard Parish  
Belle Chasse, Plaquemines Parish  
Triumph, Plaquemines Parish

## **IER 19 – Contractor Furnished Borrow**

**Approved 2/14/2008**

St. Gabriel, Iberville Parish  
River Birch 1, Jefferson Parish  
River Birch 2, Jefferson Parish  
Eastover 1, Orleans Parish  
Pearlington Dirt 1, Hancock County, MS  
Navy Ship, St. Bernard Parish  
Guillot, St. Bernard Parish  
DK Aggregates, St. Bernard Parish  
Kimble 2, Plaquemines Parish

## **IER 22 – Government Furnished Borrow #2**

**Approved 5/30/08**

Brad Buras, Plaquemines Parish  
Chauvin\*, Plaquemines Parish  
Tabony, Plaquemines Parish  
Westbank N, Plaquemines Parish  
Westbank F, Jefferson Parish  
Westbank I, Jefferson Parish

## **IER 23 – Contractor Furnished Borrow #2**

**Approved 5/8/08**

1025 Florissant Hwy., St. Bernard Parish  
Acosta, St. Bernard Parish  
3C Riverside 1, St. Charles Parish  
3C Riverside 2, St. Charles Parish  
Myrtle Grove, Plaquemines Parish  
Pearlington Dirt 2, Hancock County, MS

## **IER 25 – Government Furnished Borrow #3**

**Approved 2/3/09**

Stumpf 1, Orleans Parish  
Stumpf 2, Orleans Parish  
Westbank D, Jefferson Parish  
Westbank E 1, Jefferson Parish  
Westbank E 2, Jefferson Parish  
Tac Carrere, Plaquemines Parish

## **IER 26 – Contractor Furnished Borrow #3**

**Approved 10/20/08**

Willswood, Jefferson Parish  
South Kenner Road, Jefferson Parish  
Meyer, Plaquemines Parish  
Willow Bend 1, St. John the Baptist Parish  
Frierson, Hancock County, MS

## **IER 28 – Government Furnished Borrow #4**

**Approved 7/31/09**

Bazile, Plaquemines Parish  
Johnson/Crovetto, St. Bernard Parish  
Westbank F Access Route, Jefferson Parish

## **IER 29 – Contractor Furnished Borrow #4**

**Approved 9/8/09**

Tammany Holding Company, St. Tammany Parish  
Willow Bend 2, St. John the Baptist Parish  
Eastover 2, Orleans Parish

## **IER 30 - Contractor Furnished Borrow #5**

**Approved 9/28/09**

Henley, Hancock County, MS  
Big Shake, St. James Parish  
Contreras Dirt (Cells E, F and Z), St. Bernard Parish

## **IER 31 - Contractor Furnished Borrow #7**

**Approved 10/29/2010**

King Mine, Hancock County, MS  
Port Bienville, Hancock County, MS  
Spoil Area, St. Bernard Parish  
Raceland Raw Sugars, Lafourche Parish  
Acosta 2, St. Bernard Parish  
Scarsdale, Plaquemines Parish  
River Birch - Landfill Expansion, Jefferson Parish  
Levis, St Tammany Parish  
Lilly Bayou, East Baton Rouge Parish  
Idlewild 2, Plaquemines Parish

## **IER 32 - Contractor Furnished Borrow #6**

**Approved 1/22/10**

Bocage, Ascension Parish  
Idlewild 1, Plaquemines Parish  
Nairn, Plaquemines Parish  
3C Riverside 3, St. Charles Parish  
Plaquemines Dirt & Clay, Plaquemines Parish  
Citrus Lands, Plaquemines Parish  
ConocoPhillips, Plaquemines Parish

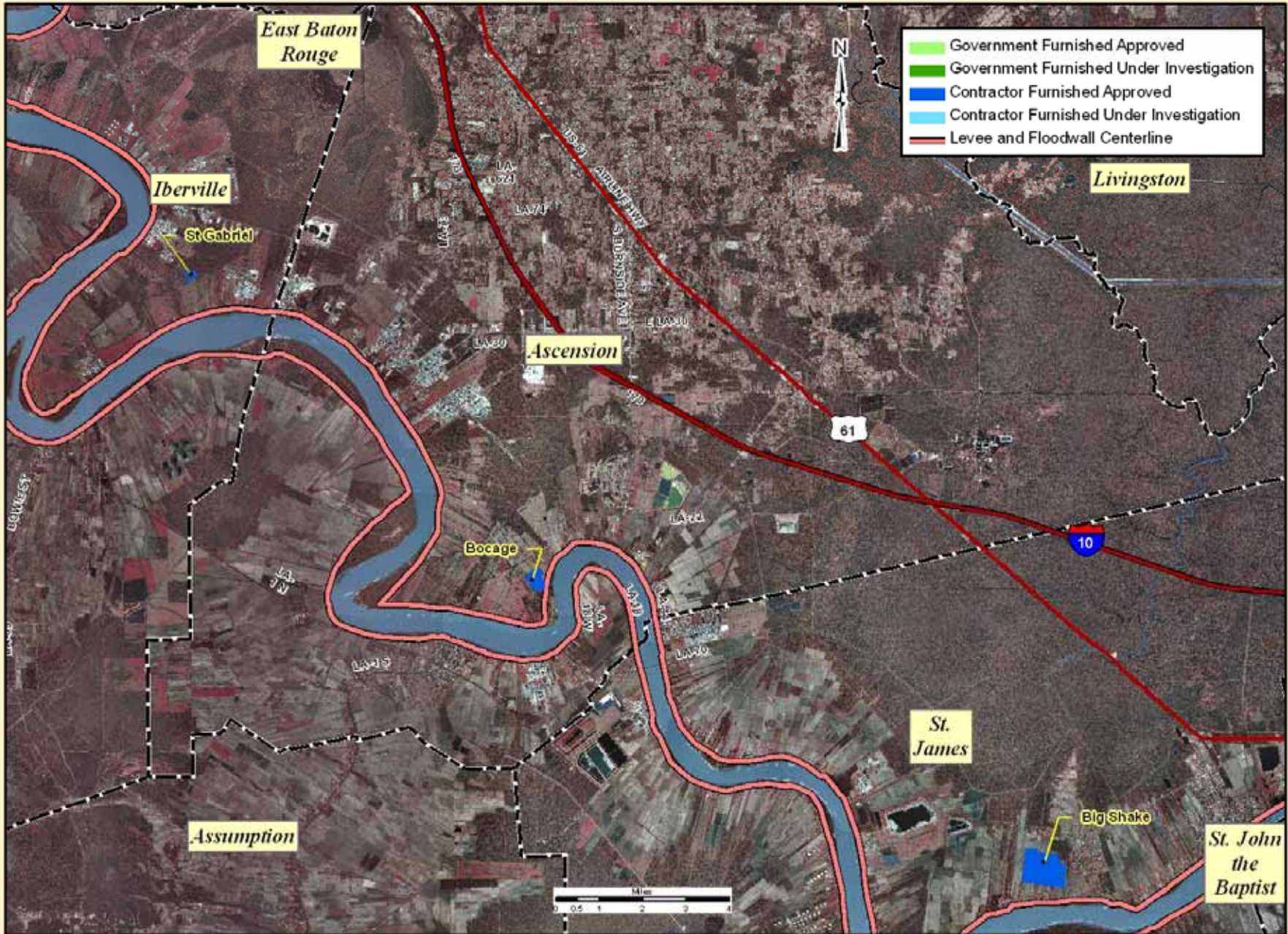
IER: Individual Environmental Report.

National Environmental Policy Act compliance for the HSDRRS takes the form of multiple IERs that examine smaller portions of the proposed HSDRRS. The work will culminate in a Comprehensive Environmental Document that will integrate the findings of all the previously prepared IERs, describe the work being completed as a system, and examine how each project is interrelated to the overall work being done. Groups of proposed borrow areas are investigated in each IER.

\* Borrow site does not meet Corps geotechnical criteria, and will not be used for the HSDRRS.



# IBERVILLE - ASCENSION - ST JAMES PARISHES

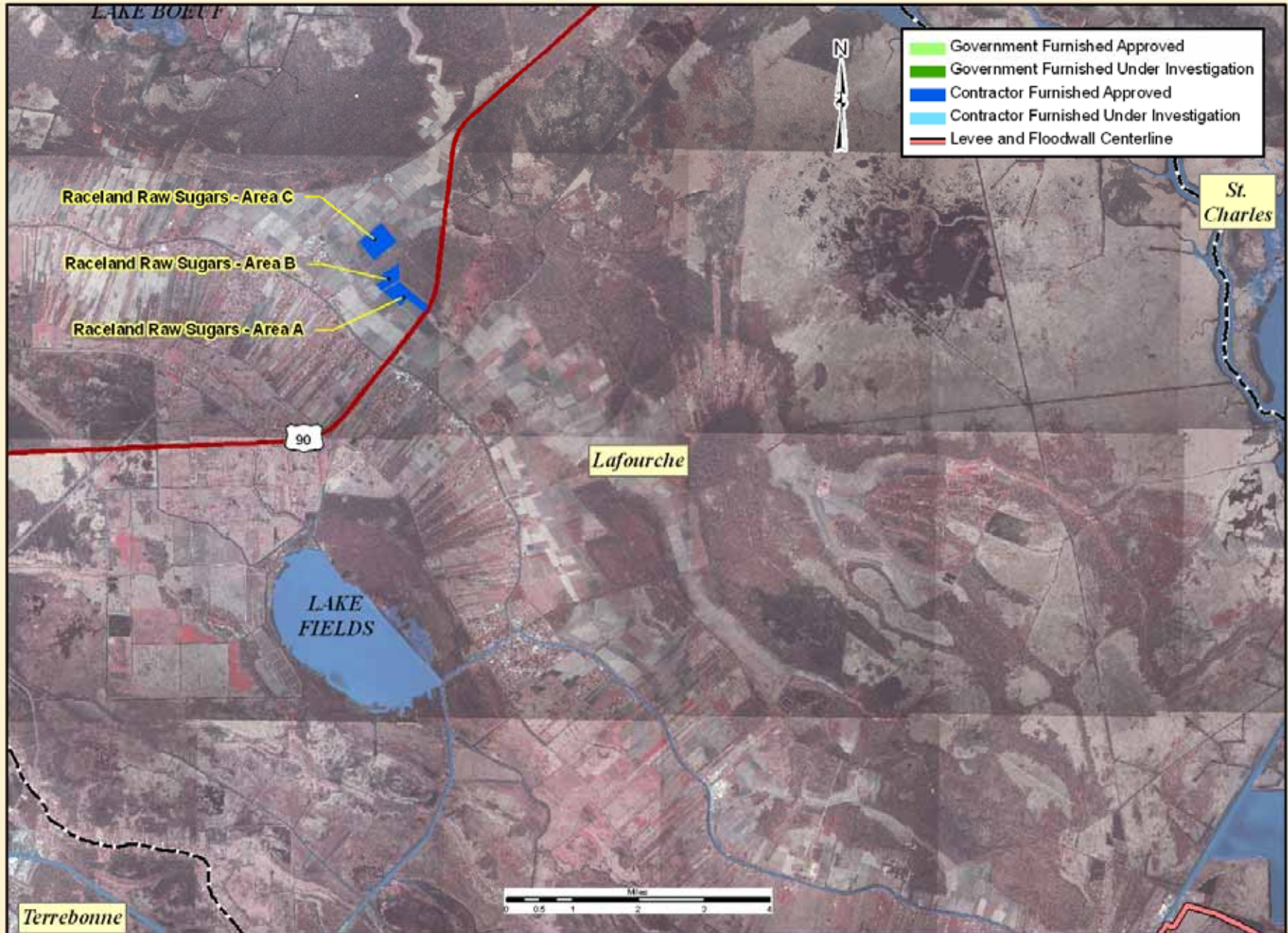


Updated on 11/18/2010

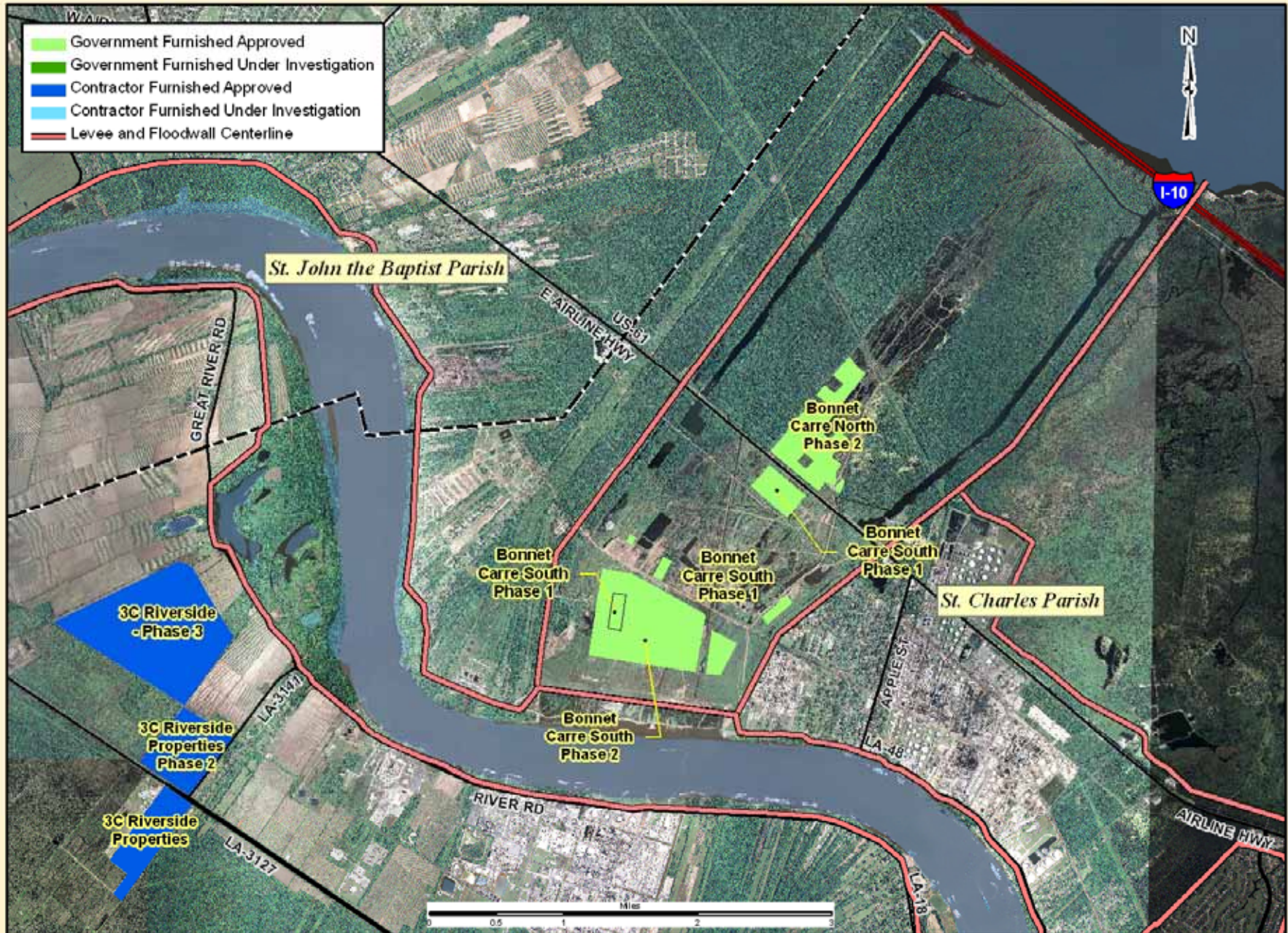
EGIS Map ID No. EGIS 09-037



# LAFOURCHE PARISH

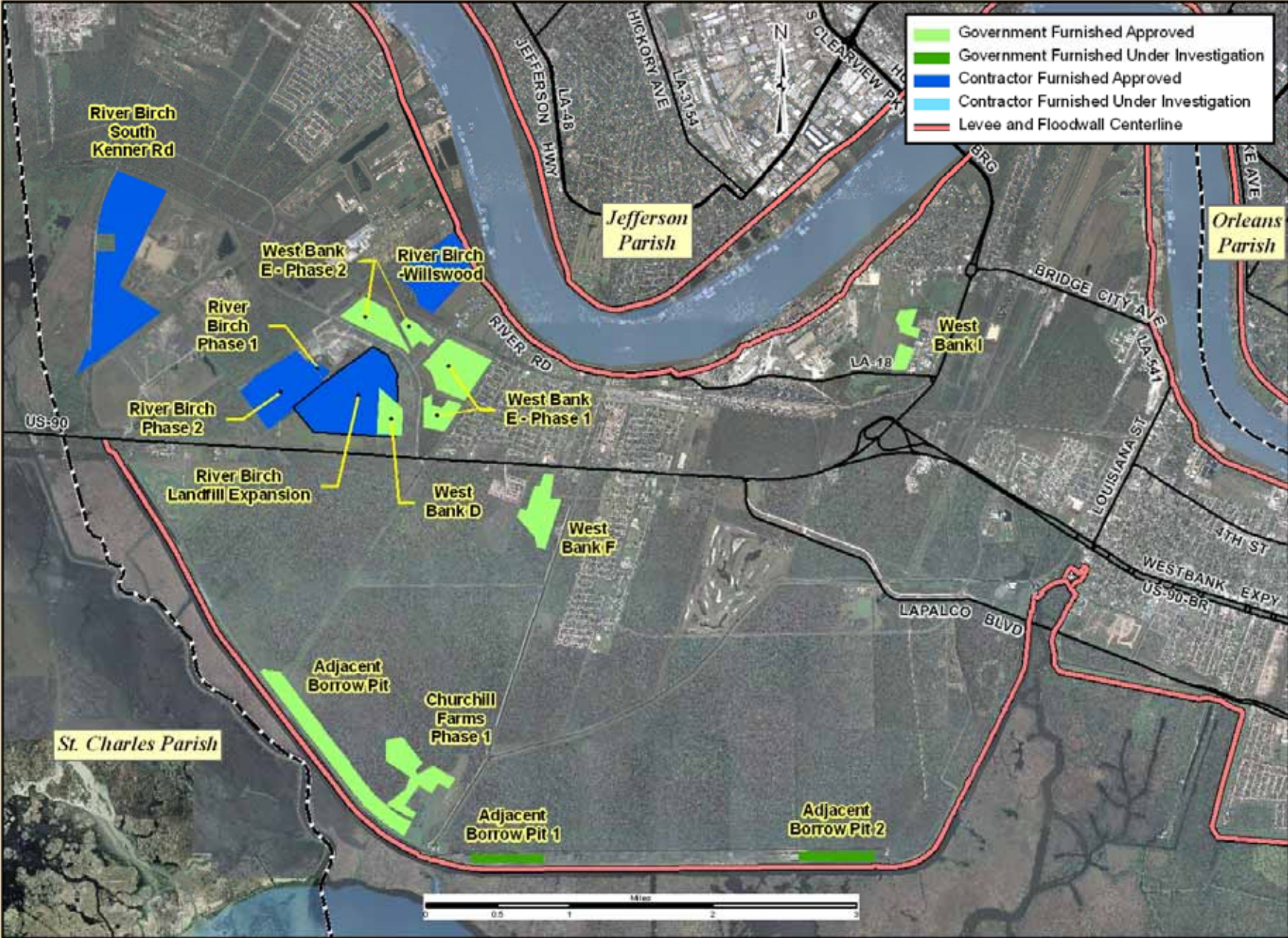


# BONNET CARRE SPILLWAY - ST. CHARLES PARISH

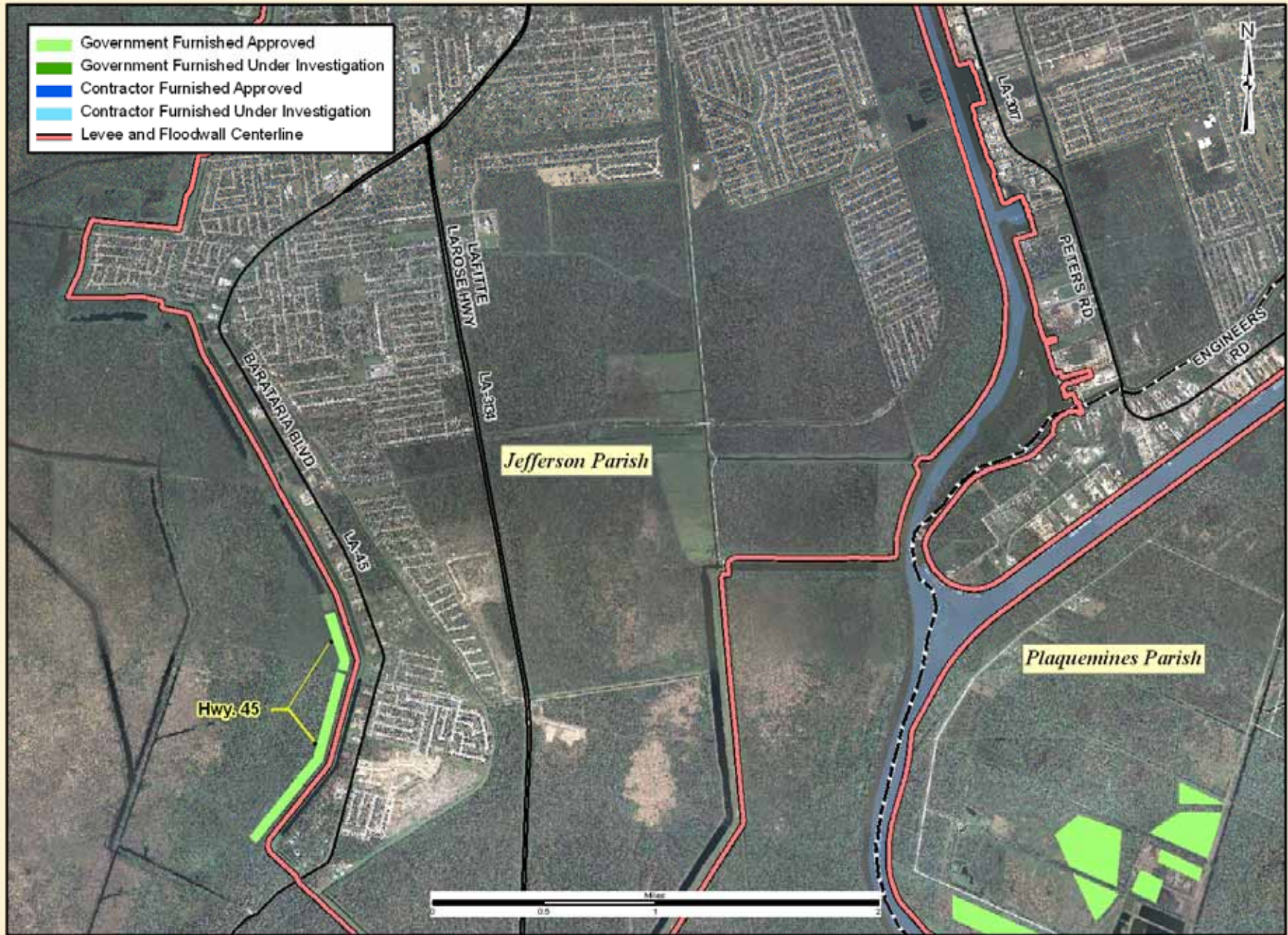




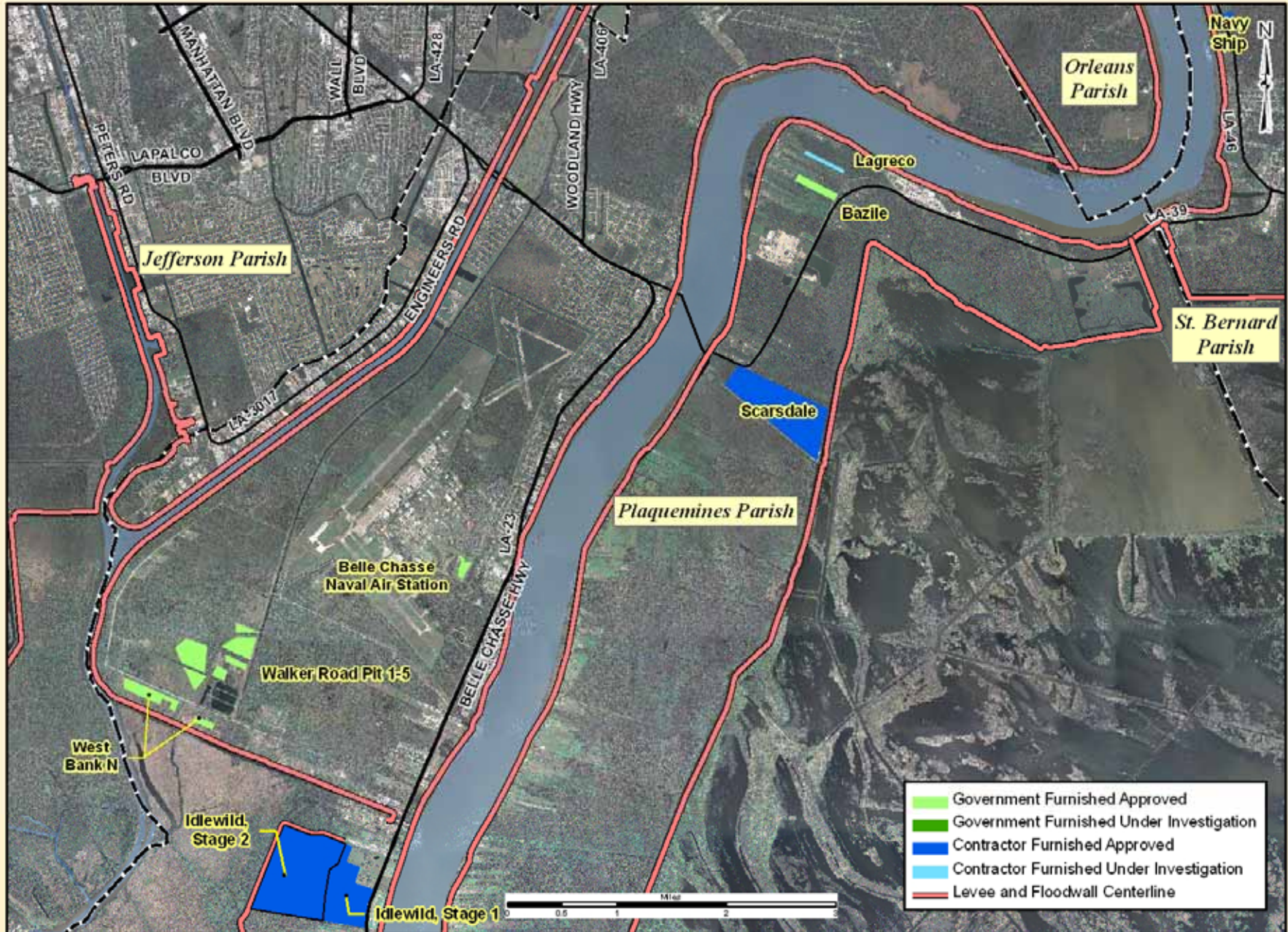
# WEST BANK - JEFFERSON PARISH



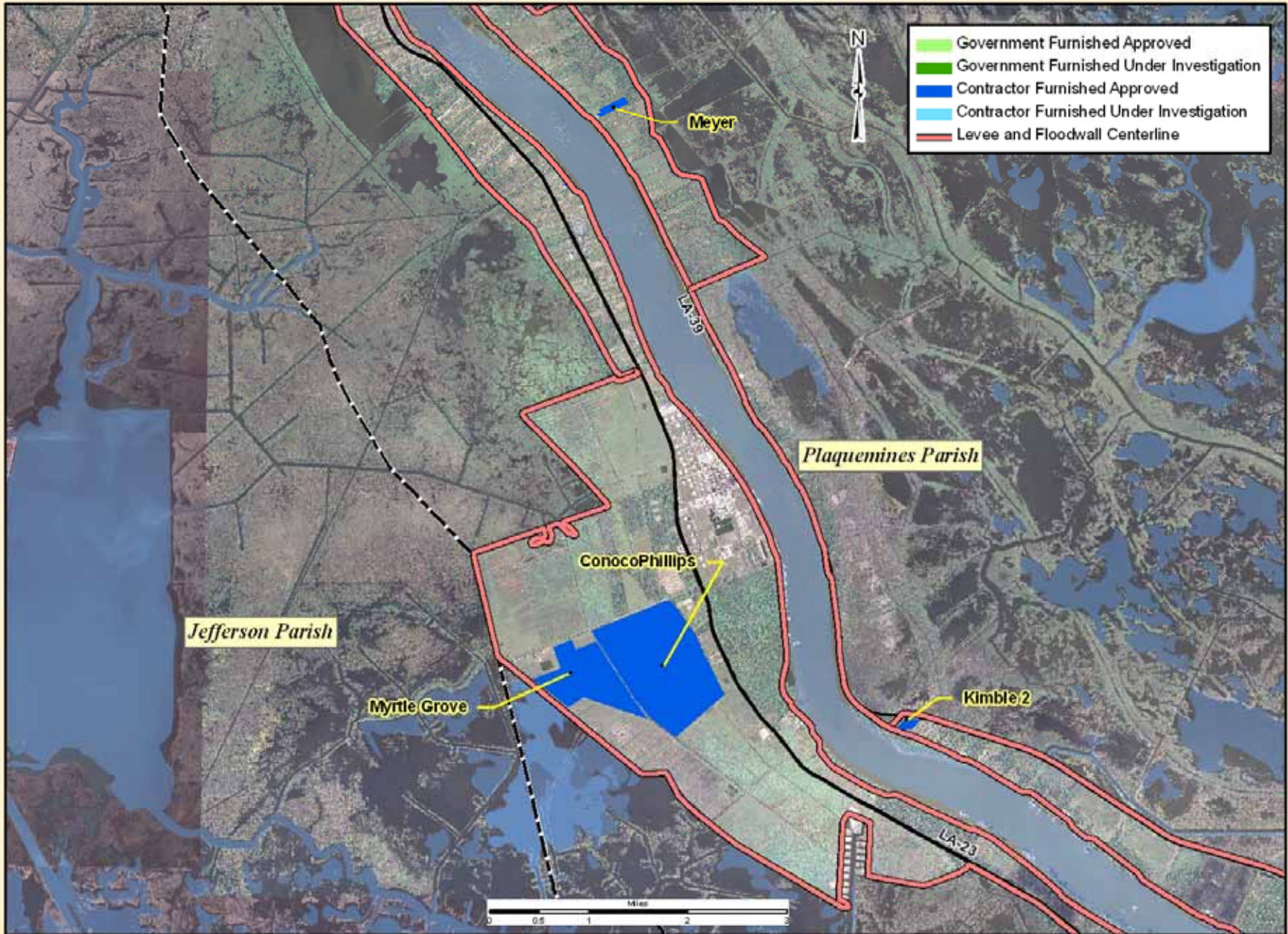
# WEST BANK 2 - JEFFERSON PARISH



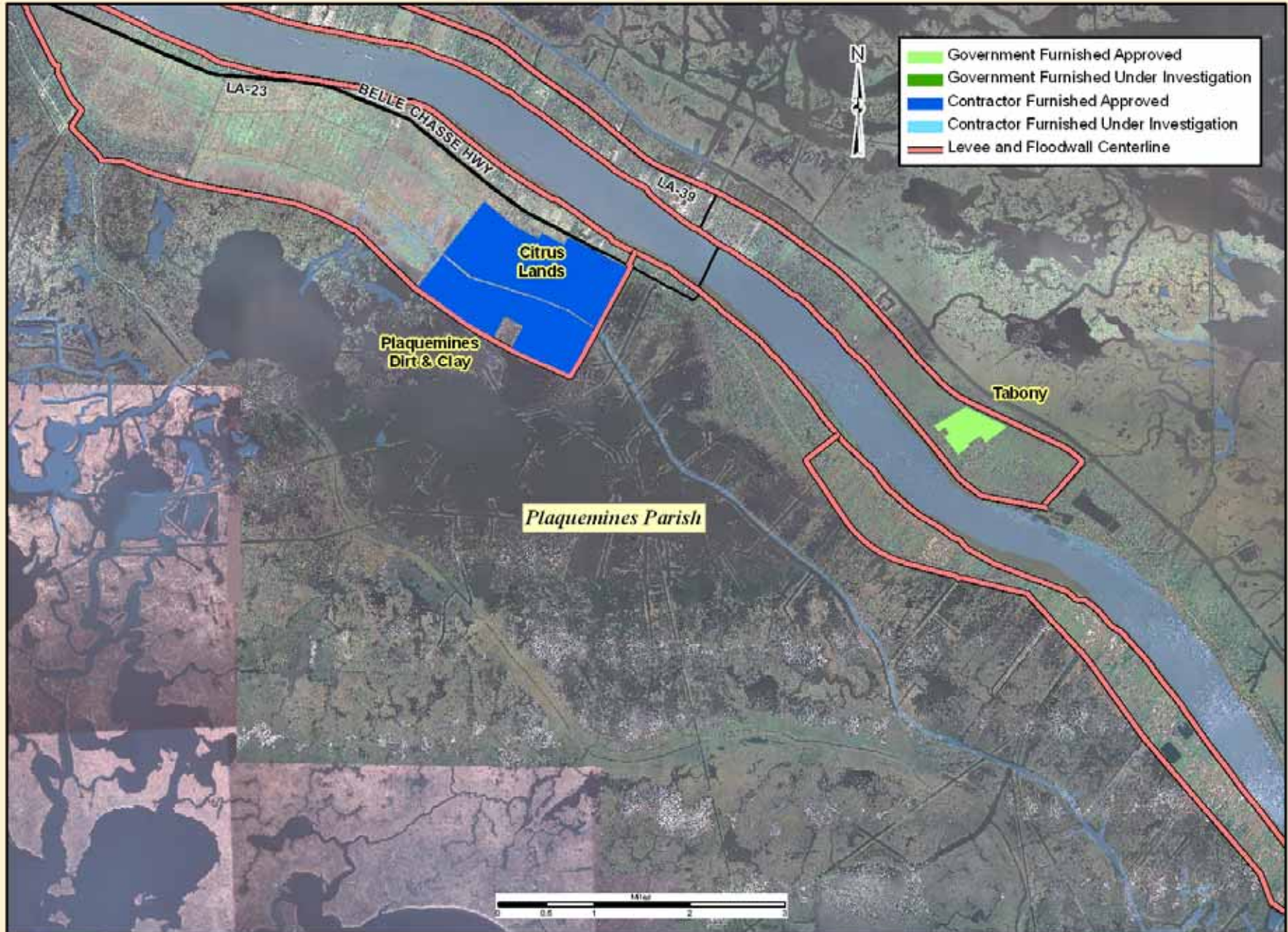
# PLAQUEMINES PARISH 1



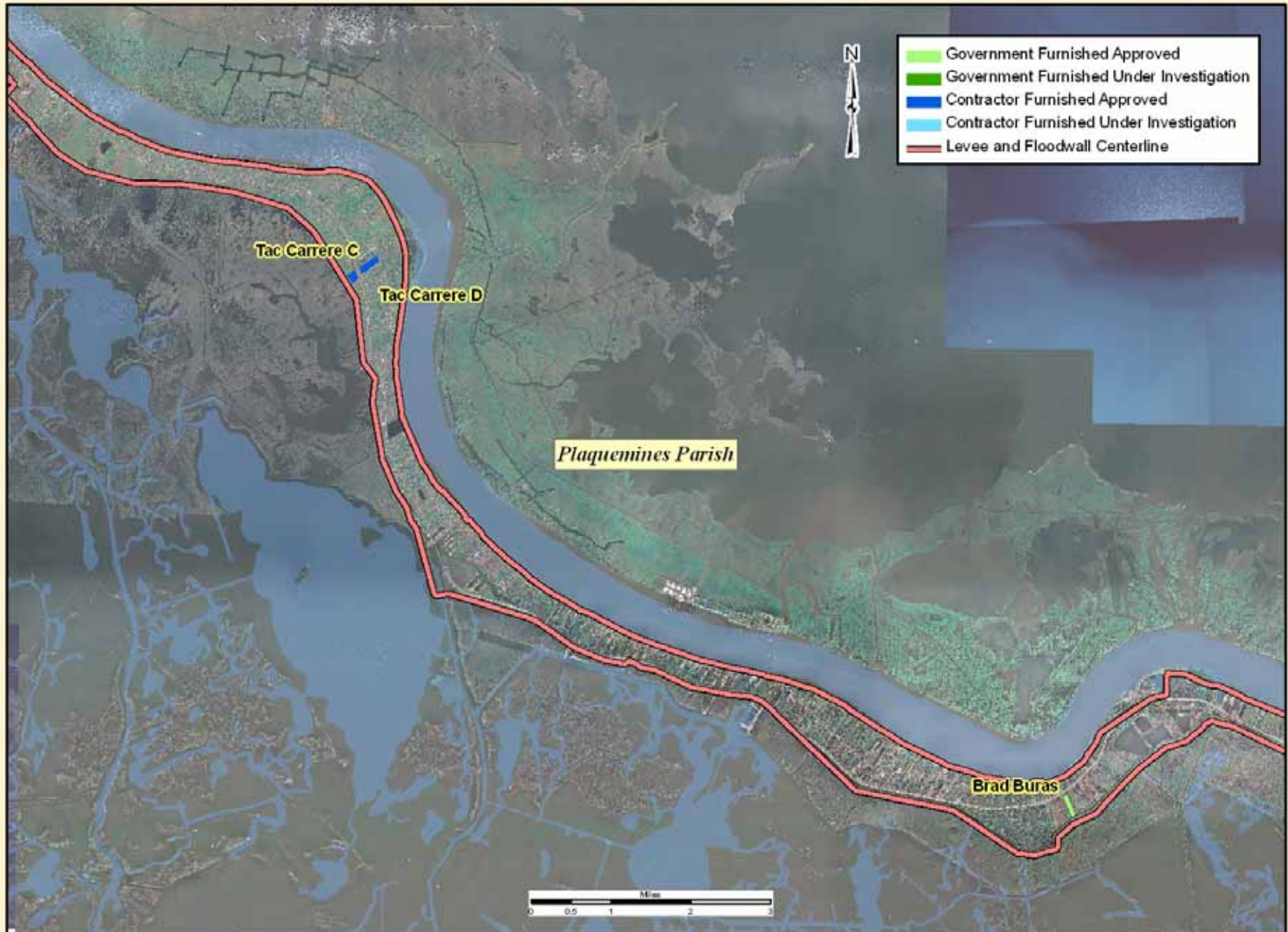
# PLAQUEMINES PARISH 2



# PLAQUEMINES PARISH 3



# PLAQUEMINES PARISH 4



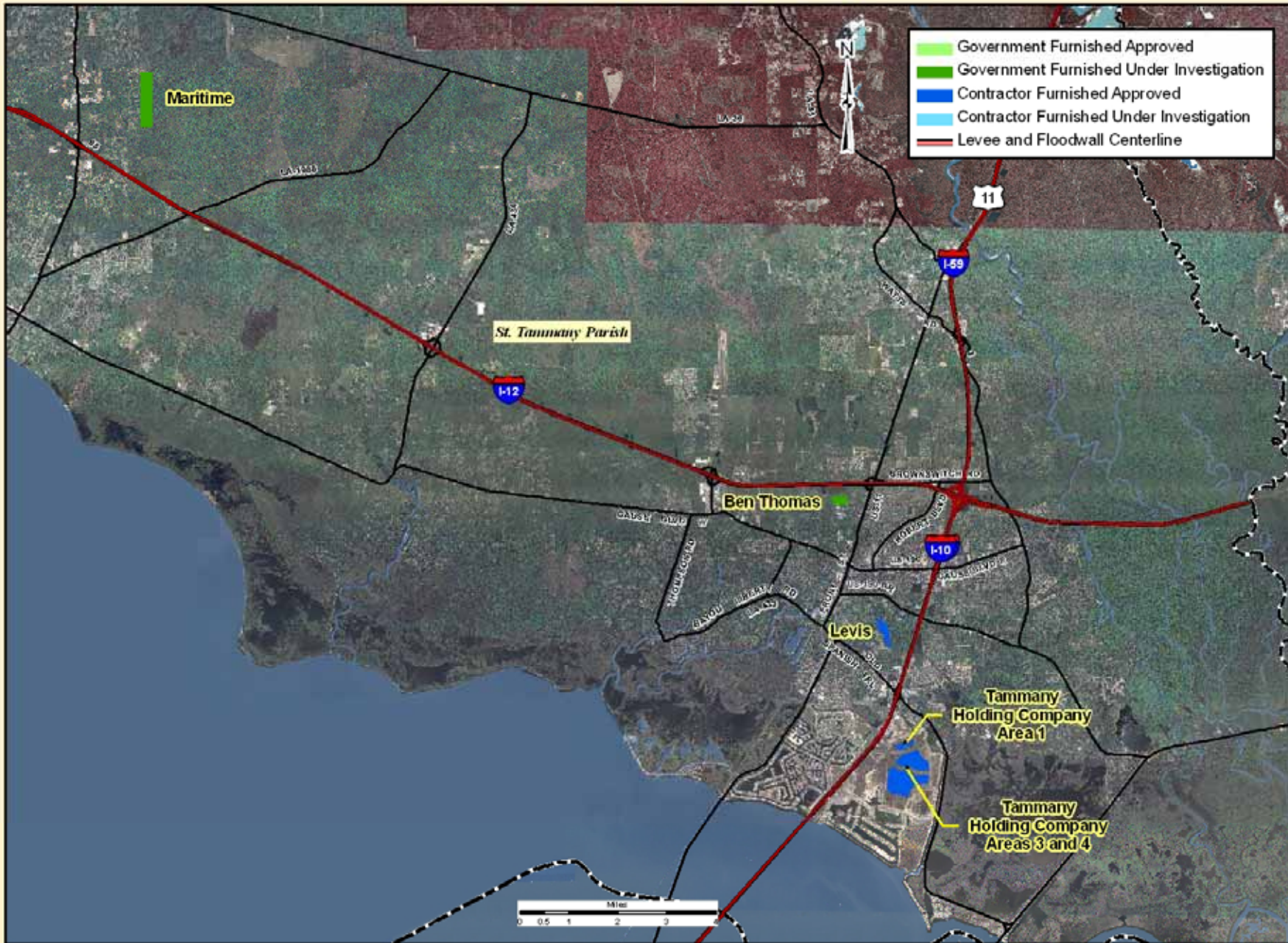
# NEW ORLEANS EAST - ORLEANS PARISH







# ST. TAMMANY PARISH



# MISSISSIPPI WEST

