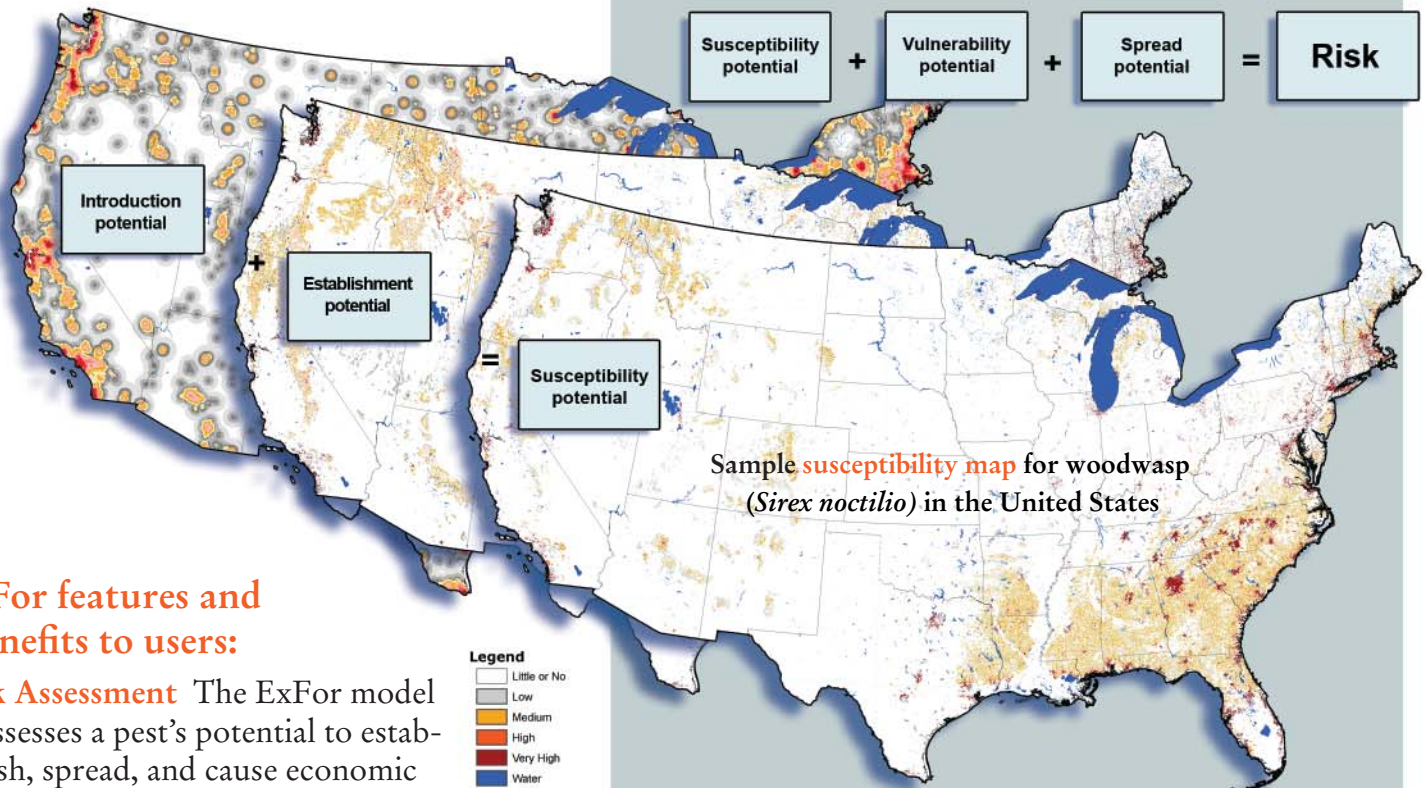


Forest Ecosystem Health Risk Assessment: Rating the damage potential of exotic forest pests

The Exotic Forest Pest Information System (ExFor) of the North American Forest Commission is an Internet-accessible modeling tool that enables researchers to submit pest records for use by forest protection agencies, workers, and researchers worldwide to identify, assess, rate, and manage local economic and environmental risks posed by forest pests introduced from offshore.



ExFor features and benefits to users:

Risk Assessment The ExFor model assesses a pest's potential to establish, spread, and cause economic and environmental harm, and can be applied worldwide, *saving the user time and development costs.*

Risk Rating The ExFor model assigns a numerical score establishing a pest's final risk rating in North America, from 1 (Very Low) to 9 (Very High), *simplifying the process of assigning pest management priorities.*

Pest Fact Sheet The ExFor Pest Fact Sheet provides information on pest identification, biology, control methods, detection, etc, on each pest in the database, *providing applicable documentation.*

Keywords:

Forest Ecosystem Health Risk Assessment
Exotic Forest Pest Information System
Risk Assessment
Risk Rating

<http://www.spfnic.fs.fed.us/exfor/>

Exotic Forest Pest Information System website

<http://www.spfnic.fs.fed.us/exfor/>

ExFor is successful because of the participation of entomologists, plant pathologists, nematologists, and other forest health professionals from all over the world. Proposed functionality includes the creation of a global relational database such that data fields taken from ExFor records can be searched, overlaid in a GIS, and then presented in both map and tabular forms. This increased functionality will allow the user to view the global potential distribution of each pest and to assess the susceptibility hazard for areas where a pest may be introduced.

We encourage you to participate in ExFor by submitting fact sheets and ratings on forest pests for which you are an expert. You may submit your information in English, French, or Spanish. All submissions will be acknowledged and presented as authored publications.

ExFor welcomes your submissions.

1. Go to the ExFor Homepage
2. Create a new User ID and Password
3. Follow the menus to enter your data

A core group of experts at ExFor will review your information for grammar, punctuation, and consistency; you will be able to review and comment on any changes the group might recommend, prior to publication.

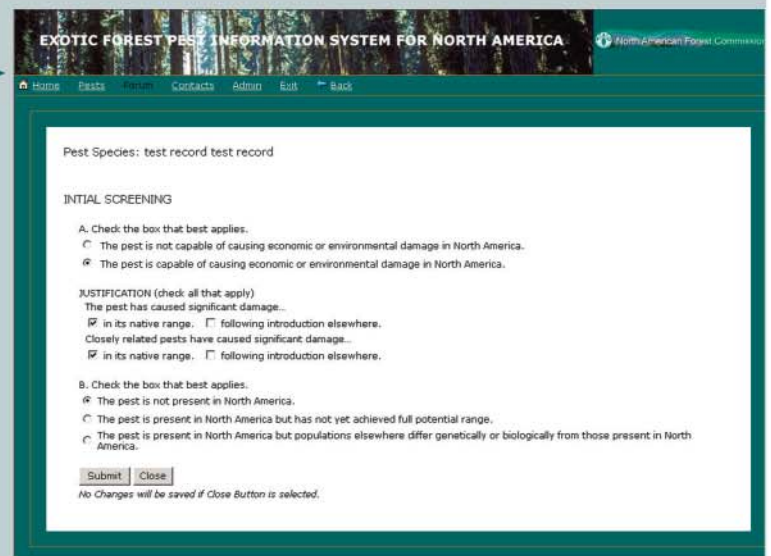
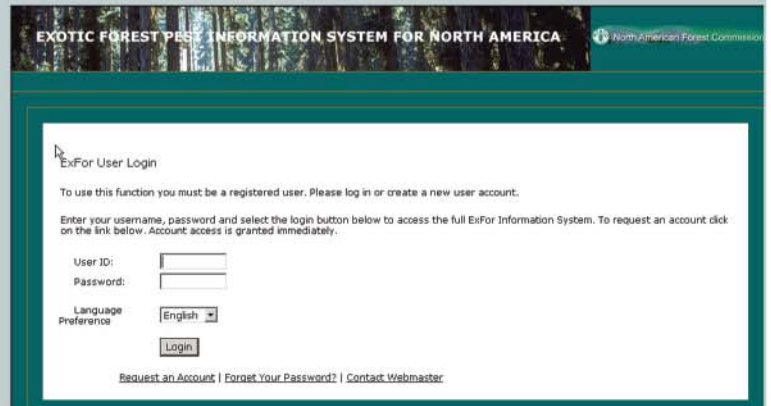
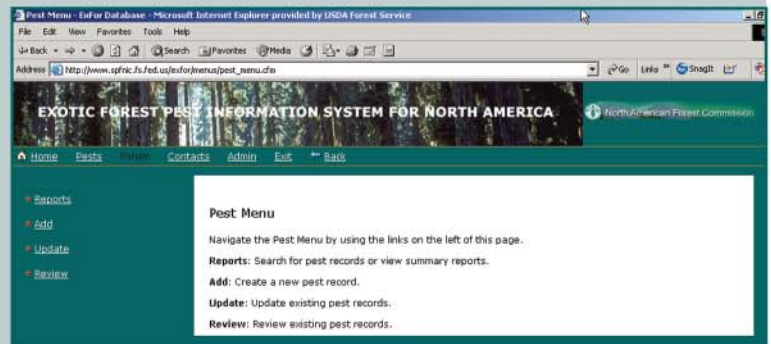
The information you submit will be compiled as a *Risk Assessment*. Thereafter, you may modify or update your records as new information becomes available.

Contact



USDA Forest Service
Forest Health Technology Enterprise Team
2150 Centre Ave., Bldg. A
Fort Collins, CO 80526-1891
USA

Marla Downing
970-295-5843
970-295-5815 Fax
m Downing@fs.fed.us



The US Department of Agriculture (USDA) prohibits discrimination in all its programs and activities on the basis of race, color, national origin, sex, religion, age, disability, political beliefs, sexual orientation, or marital or family status. (Not all prohibited bases apply to all programs.) Persons with disabilities who require alternative means for communication of program information (Braille, large print, audiotape, etc.) should contact USDA's TARGET Center at 202-720-2600 (voice and TDD). To file a complaint of discrimination, write USDA, Director, Office of Civil Rights, Room 326-W, Whitten Building, 1400 Independence Avenue, SW, Washington, DC, 20250-9410, or call 202-720-5964 (voice and TDD). USDA is an equal opportunity provider and employer.