

# Hanford Advisory Board *Agency Update*

**Doug Shoop, Deputy Manager**

**DOE Richland Operations Office**

*December, 2008*



**EM** *Environmental Management*

safety ❖ performance ❖ cleanup ❖ closure

[www.em.doe.gov](http://www.em.doe.gov)







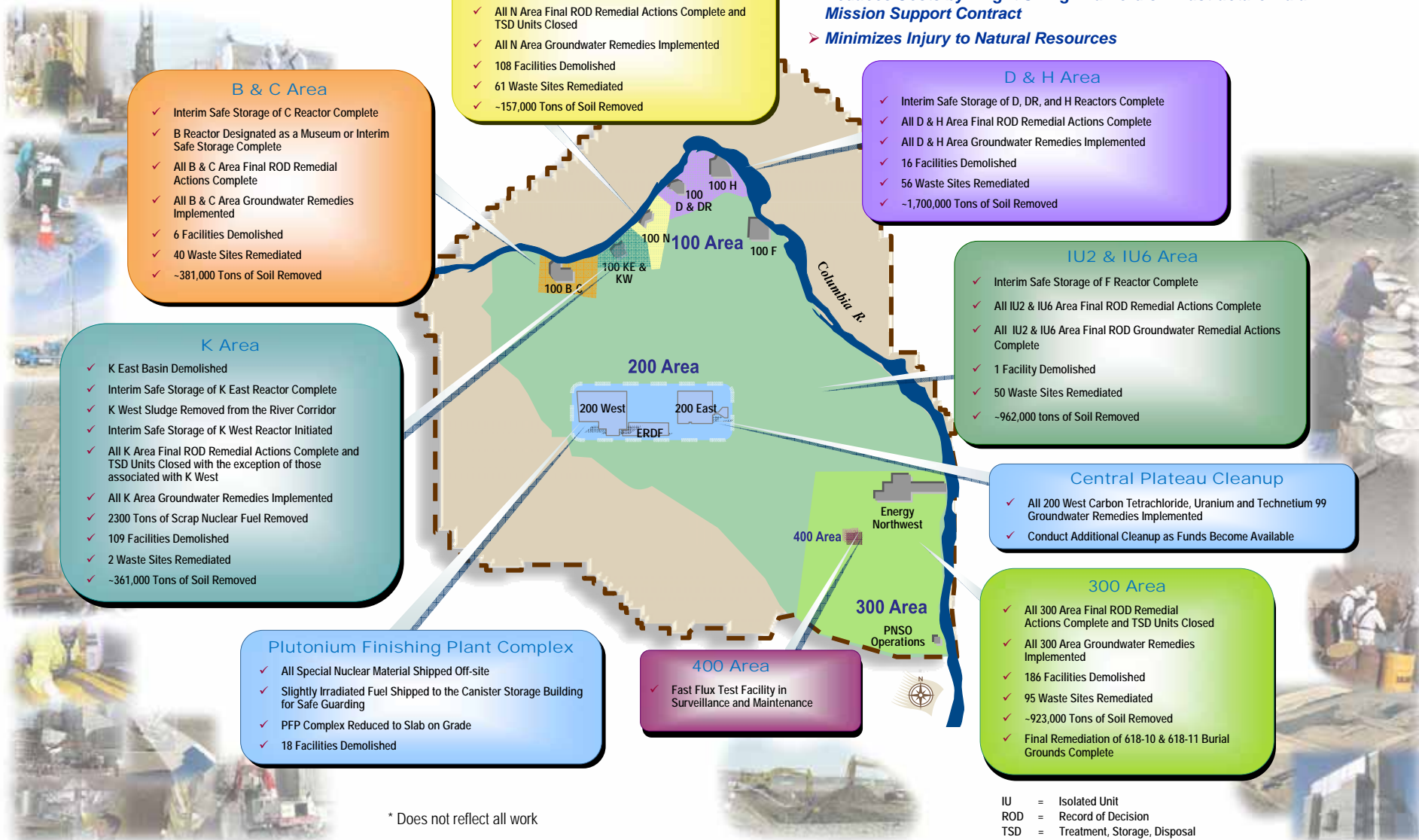
# The 2015 Vision

## Hanford Site Cleanup

# Safe and Effective Cleanup that Protects the Columbia River

Richland Operations Office

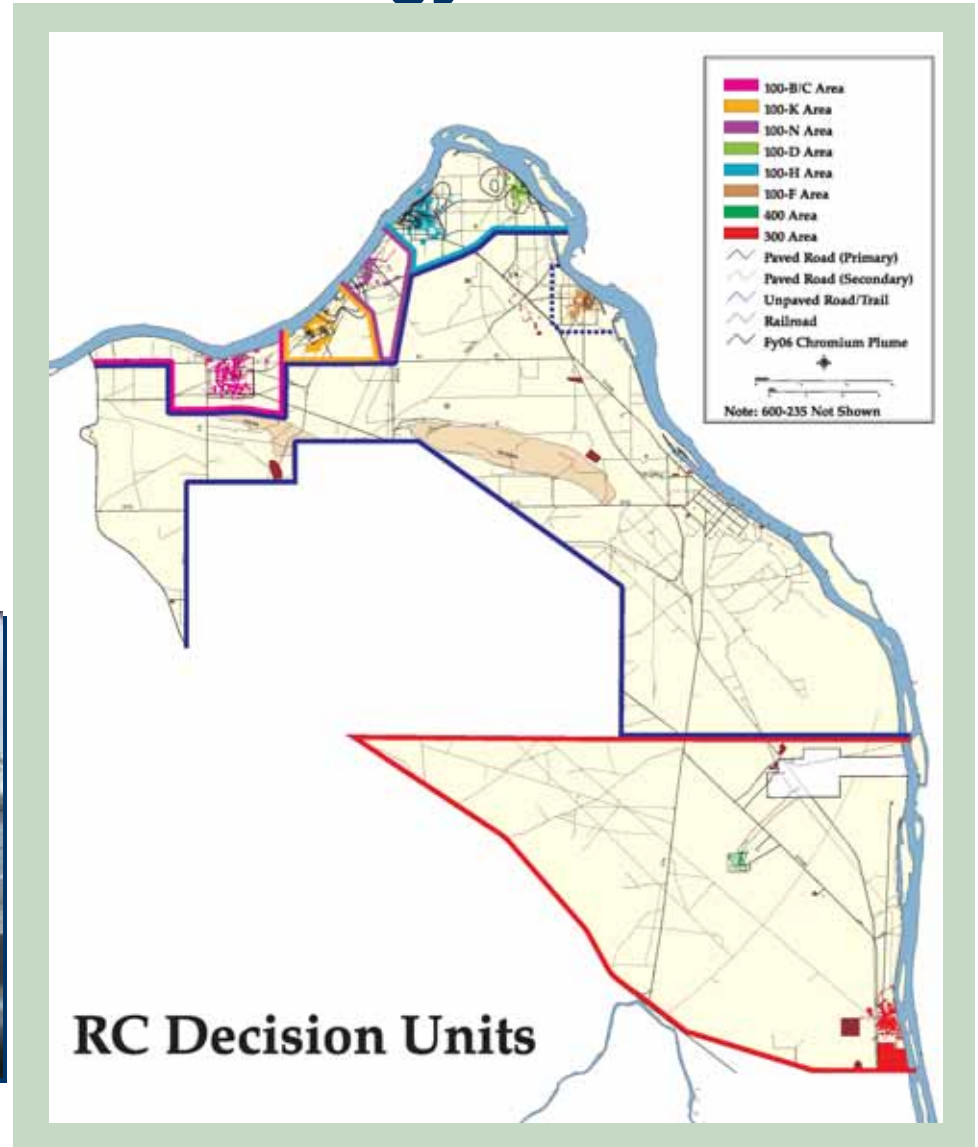
- Reduces the Active Site Footprint of Cleanup to 75 Square Miles (586 to 75)
- Significantly Reduces Long-Term Mortgage Costs
- At Completion, Shifts Emphasis and Resources to Full Scale Cleanup of the Central Plateau (75 square miles)
- Reduces Costs by "Right Sizing" Hanford's Infrastructure via a Mission Support Contract
- Minimizes Injury to Natural Resources



\* Does not reflect all work

IU = Isolated Unit  
 ROD = Record of Decision  
 TSD = Treatment, Storage, Disposal

# River Corridor Strategy



**EM** Environmental Management

safety ❖ performance ❖ cleanup ❖ closure

## 300 Area – Glovebox Removal



**EM** Environmental Management

safety ❖ performance ❖ cleanup ❖ closure



# 300 Area – 618-7 Site



**EM** Environmental Management

safety ❖ performance ❖ cleanup ❖ closure

## 300 Area – 618-7 Site (continued)



**EM** Environmental Management

safety ❖ performance ❖ cleanup ❖ closure



# K East Basin – Before Demolition



105KE Reactor and Fuel Storage Basin



**EM** Environmental Management

safety ❖ performance ❖ cleanup ❖ closure



# K East Basin



**EM** Environmental Management

safety ❖ performance ❖ cleanup ❖ closure

# Groundwater

- 200-ZP1 Record of Decision finalized – first final ROD for groundwater on the Hanford Site
- Contaminants of concern include carbon tetrachloride, total chromium (Cr III and Cr VI), nitrate, trichloroethylene, iodine 129 and technetium-99
- Selected remedy combines pump and treat, monitored natural attenuation, flow path control and ICs





# Plutonium Finishing Plant



**EM** Environmental Management

safety ❖ performance ❖ cleanup ❖ closure

# Plutonium Finishing Plant

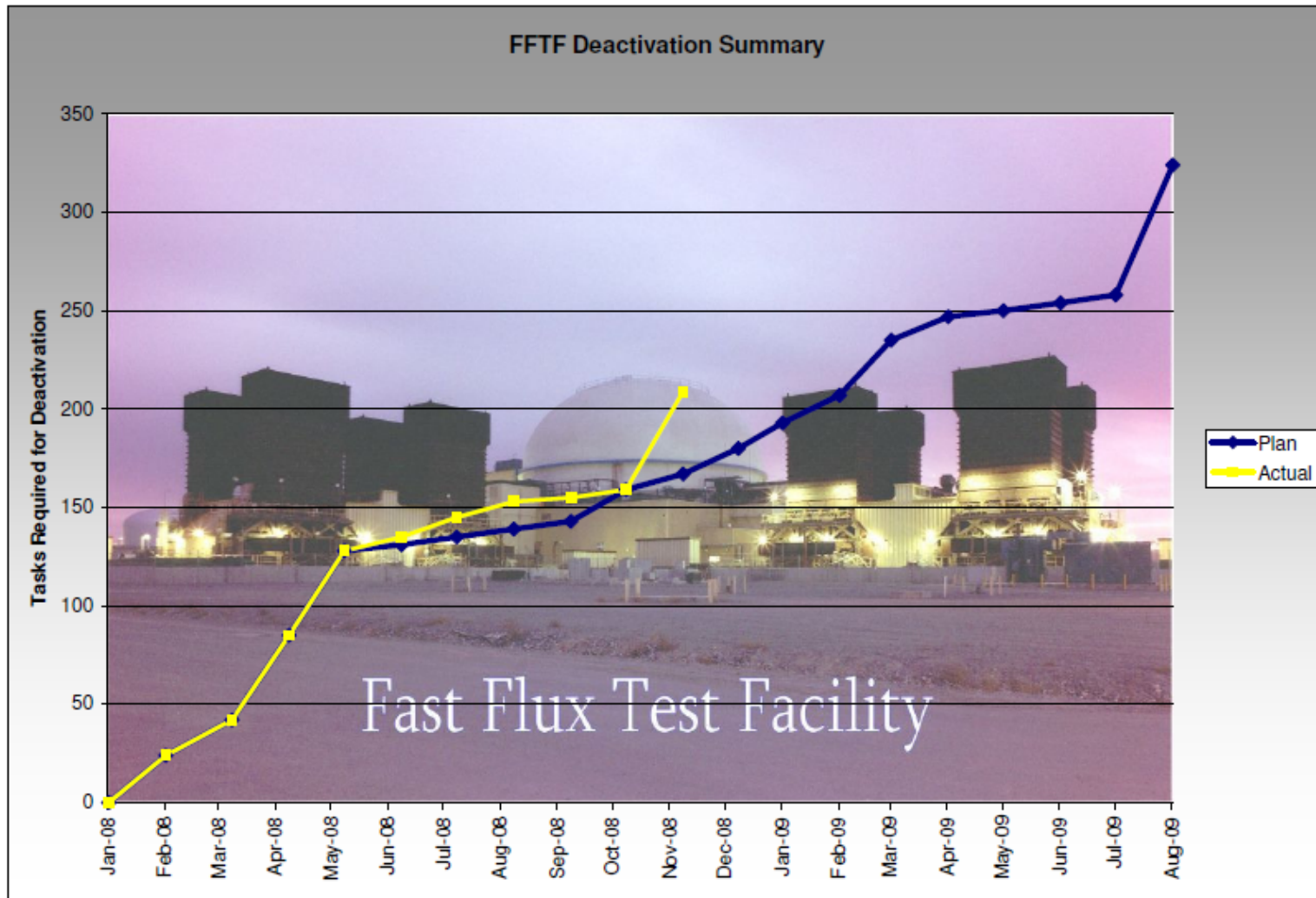


**EM** Environmental Management

safety ❖ performance ❖ cleanup ❖ closure



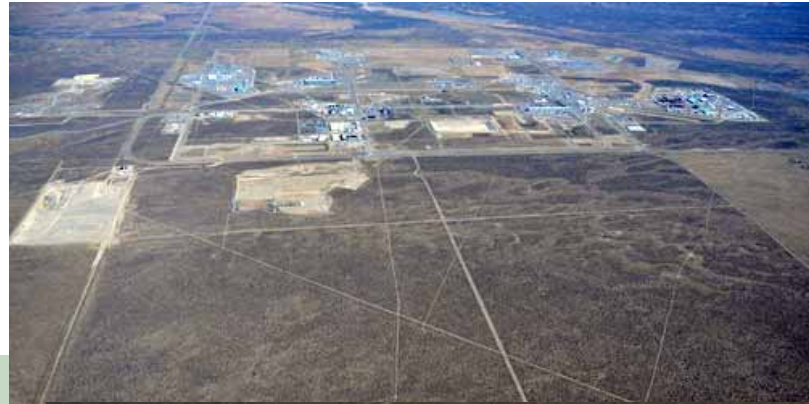
# FFTF Deactivation Status



**EM** Environmental Management

safety ❖ performance ❖ cleanup ❖ closure

# Central Plateau – B/C Control Area



**EM** Environmental Management

safety ❖ performance ❖ cleanup ❖ closure



## Solid Waste Stabilization & Disposition – FY 09

- Retrieve 1000 cubic meters
- Repackage in T Plant
- Prepare 1000 Overpack drums for potential shipment to INL
- Build inventory for future shipping campaigns



**EM** *Environmental Management*

safety ❖ performance ❖ cleanup ❖ closure

# RL Overall Occupational Safety Performance

October							
Contractor	Work Hours	TRC Rate	DART Rate	FY09 TRC Rate	FY09 DART Rate	FY08 TRC Rate	FY08 DART Rate
PRC	304,564	1.97	0.00	1.97	0.00	N/A	N/A
PHMC Prime	367,152	0.00	0.00	0.00	0.00	0.78	0.32
RCP	171,193	1.17	0.00	1.17	0.00	0.60	0.10
<b>RL TOTAL</b>	<b>842,909</b>	<b>0.95</b>	<b>0.00</b>	<b>0.95</b>	<b>0.00</b>	<b>0.75</b>	<b>0.28</b>
<b>EM AVG</b>	<b>14,624,964*</b>	<b>1.09*</b>	<b>0.48*</b>	<b>N/A</b>	<b>N/A</b>	<b>1.09*</b>	<b>0.48*</b>

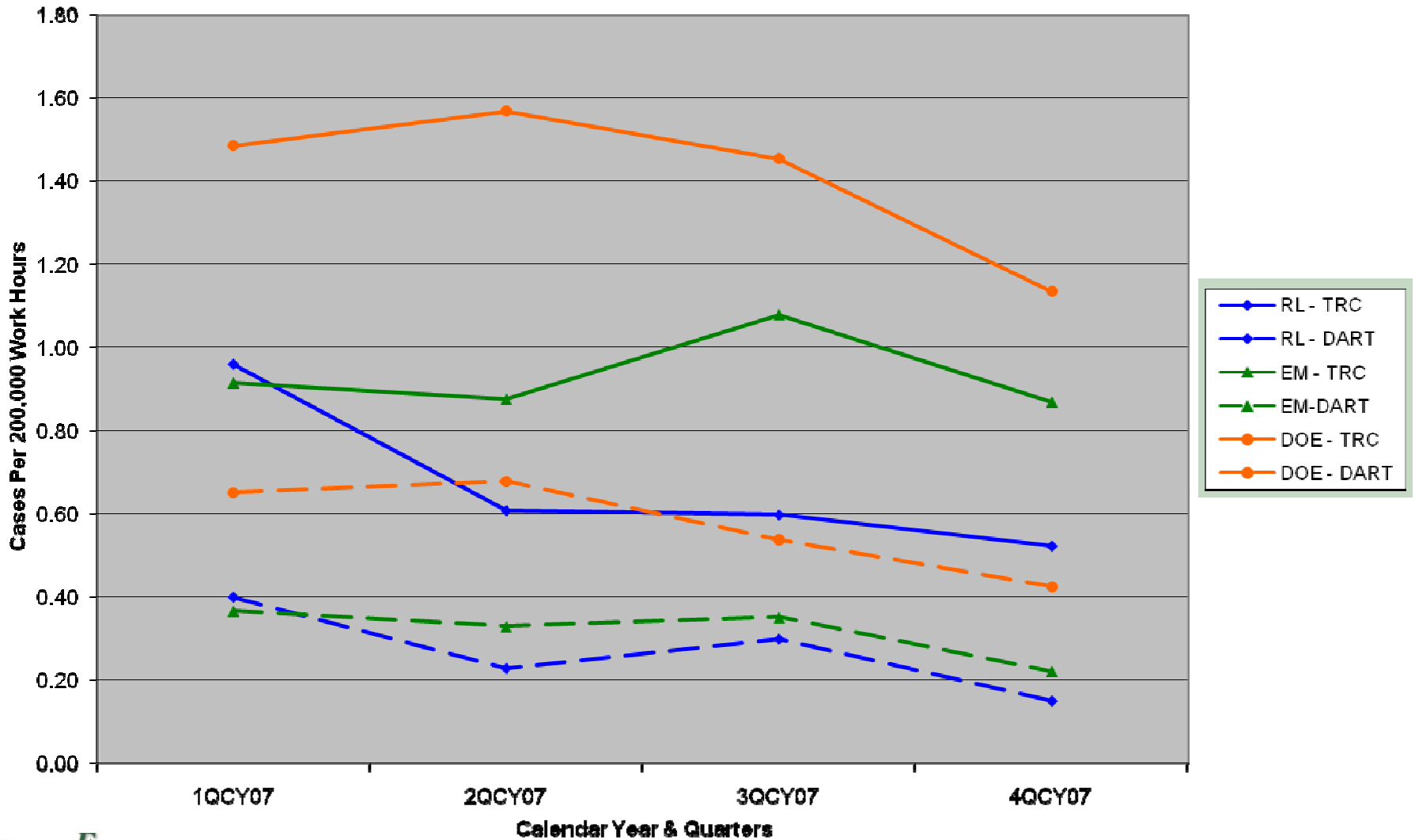


**EM Environmental Management**

safety ❖ performance ❖ cleanup ❖ closure



# DOE / EM / RL – TRC & DART Case Comparisons



**EM Environmental Management**

safety ❖ performance ❖ cleanup ❖ closure