



Weekly Progress



AMERICAN RECOVERY & REINVESTMENT ACT

Week Ending June 10, 2011



CHPRC-01410

Contract DE-AC06-08RL14788
Modification MO47

Contents

OVERVIEW	3
SUMMARY	4
ACCOMPLISHMENTS	5
RL-0011 Nuclear Materials Stabilization & Disposition.....	5
RL-0011.R1: Plutonium Finishing Plant D&D.....	5
RL-0013 Solid Waste Stabilization & Disposition	8
RL-0013C:R1.1: Mixed Low-Level Waste (MLLW)/Low-Level Waste (LLW) Treatment	8
RL-0013C:R1.2: Transuranic (TRU) Waste	9
RL-0030 Soil & Groundwater Remediation, Groundwater/Vadose Zone.....	9
RL-0030.R1: Central Plateau Soil & Groundwater	9
RL-0040 Nuclear Facility D&D – Remainder of Hanford	11
RL-0040.R1.1: U Plant/Other D&D	11
RL-0040.R1.2: Outer Zone D&D/Waste Sites	14
RL-0041 Nuclear Facility D&D – River Corridor Closure Project	15
RL-0041.R1.1: 100K Area Remediation	15
UPCOMING EVENTS	18

OVERVIEW

CH2M HILL Plateau Remediation Company (CHPRC) is using funds from the American Recovery and Reinvestment Act (Recovery Act) to accelerate critical environmental cleanup across the Central Plateau and the 100K Area along the Columbia River to help pursue the U.S. Department of Energy (DOE) “2015 Vision” to shrink the Hanford Site cleanup footprint.

RL-0011 PLUTONIUM FINISHING PLANT D&D

CHPRC is accelerating critical decontamination and decommissioning work to cleanout and prepare the Plutonium Finishing Plant (PFP) for demolition ahead of the Tri-Party Agreement milestone of September 2016.

RL-0013 SOLID WASTE STABILIZATION & DISPOSITION

CHPRC is accelerating cleanup of Hanford’s legacy waste and fuels, including retrieving, repackaging, and shipping transuranic (TRU) waste and shipping mixed low-level waste (MLLW) and low-level waste (LLW) for treatment and/or disposal.

RL-0030 SOIL & GROUNDWATER REMEDIATION

In the ongoing effort to protect the Columbia River, CHPRC is constructing two groundwater treatment facilities; installing 265 wells for monitoring, extracting, and remediating groundwater; and decommissioning 280 wells that are no longer of service.

RL-0040 NUCLEAR FACILITY D&D REMAINDER OF HANFORD

Across the Central Plateau and along the outer zone of the Hanford Site, CHPRC is remediating 24 waste sites and decommissioning and demolishing (D&D) 34 facilities to reduce mortgage, surveillance, and maintenance costs on buildings that are no longer of service. The scope also includes cleanup along the outermost edges of the Hanford Site at the Arid Lands Ecology (ALE) Reserve and North Slope, preparing the U Plant for a first-of-its-kind canyon demolition, and preparing to disposition radioactive railcars in the 200 North Area.

RL-0041 100K AREA REMEDIATION

CHPRC is demolishing 15 reactor support facilities and sampling and/or remediating 23 waste sites to shrink the cleanup footprint of two reactors, K East and K West, located in the 100K Area along the Columbia River.

For More Information

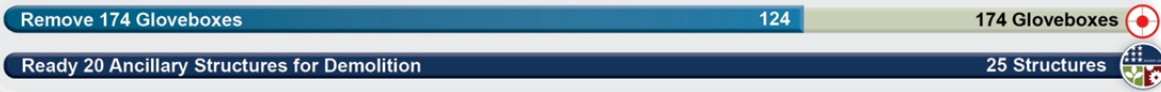
To find out more about Recovery Act progress at the Hanford Site, visit www.hanford.gov/recovery.

For information about CHPRC, including weekly Recovery Act newsletters and videos, visit www.plateauremediation.hanford.gov or contact chprcc@rl.gov.

SUMMARY

The following chart outlines CHPRC’s progress on its main Recovery Act work goals. Progress on subprojects and other Recovery Act-funded activities are detailed throughout this report and accompanied by a short progress video available on www.youtube.com/hanfordplateau.

PLUTONIUM FINISHING PLANT D&D



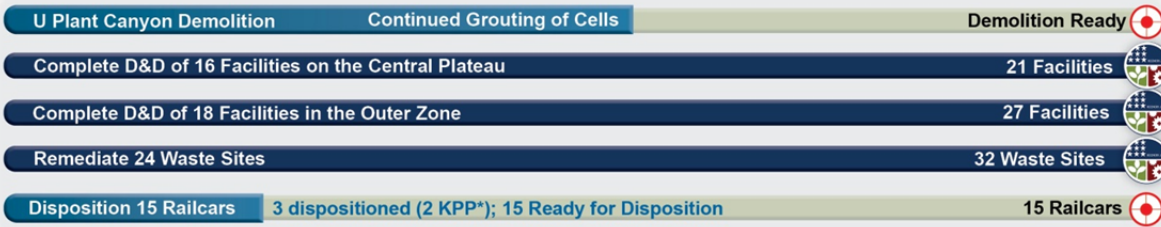
SOLID WASTE STABILIZATION & DISPOSITION



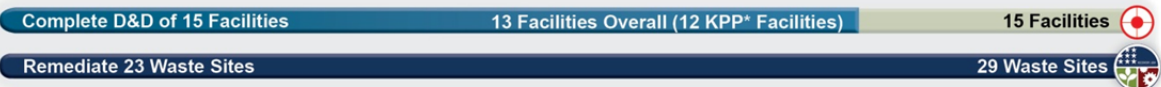
SOIL & GROUNDWATER REMEDIATION



NUCLEAR FACILITY D&D



100K AREA REMEDIATION



*Key Performance Parameters (KPP) are specific items (wells, buildings, etc.) included in the Target. "Overall" indicates the total number completed with Recovery Act funds. "Completed" marks that CH2M HILL has completed a KPP.

ACCOMPLISHMENTS

RL-0011 Nuclear Materials Stabilization & Disposition

RL-0011.R1: Plutonium Finishing Plant D&D

ACTIVITY	PFP WASTE REMOVAL & DISPOSITION	
	<i>Week of June 10, 2011</i>	<i>Completed to Date with Recovery Act Funding</i>
Gloveboxes/hoods removed or dispositioned in place	-	124 gloveboxes/hoods
Add'l gloveboxes ready for removal/size reduction	-	2 gloveboxes/hoods
MLLW/LLW shipped	14 m ³	2,672 m ³
TRU shipped	15 m ³	608 m ³
Non-radioactive waste shipped	-	24 m ³
Process transfer line removed	-	491 feet
Process vacuum system piping removed	-	1,210 feet
Asbestos removed	124 feet	14,453 feet

Process and Laboratory Areas

Glovebox disposition and general area cleanout is complete in the Radioactive Acid Digestion Test Unit (RADTU) process area. In the Analytical Laboratories, glovebox disposition has been completed, and area cleanout is underway. Cleanout was completed this week in Rooms 147 and 152, and Room 149 was downposted from an airborne radioactivity area. In the Standards Laboratory, area cleanout remains on hold awaiting development of a new Beryllium Work Permit. In the Plutonium Process Support Laboratory (PPSL), the D&D team continued removing process equipment from the last glovebox connected to building ventilation, 179-1. This glovebox and previously removed glovebox 188-1 are expected to be transferred to waste operations by the end of June, and area cleanout will be initiated at that time.

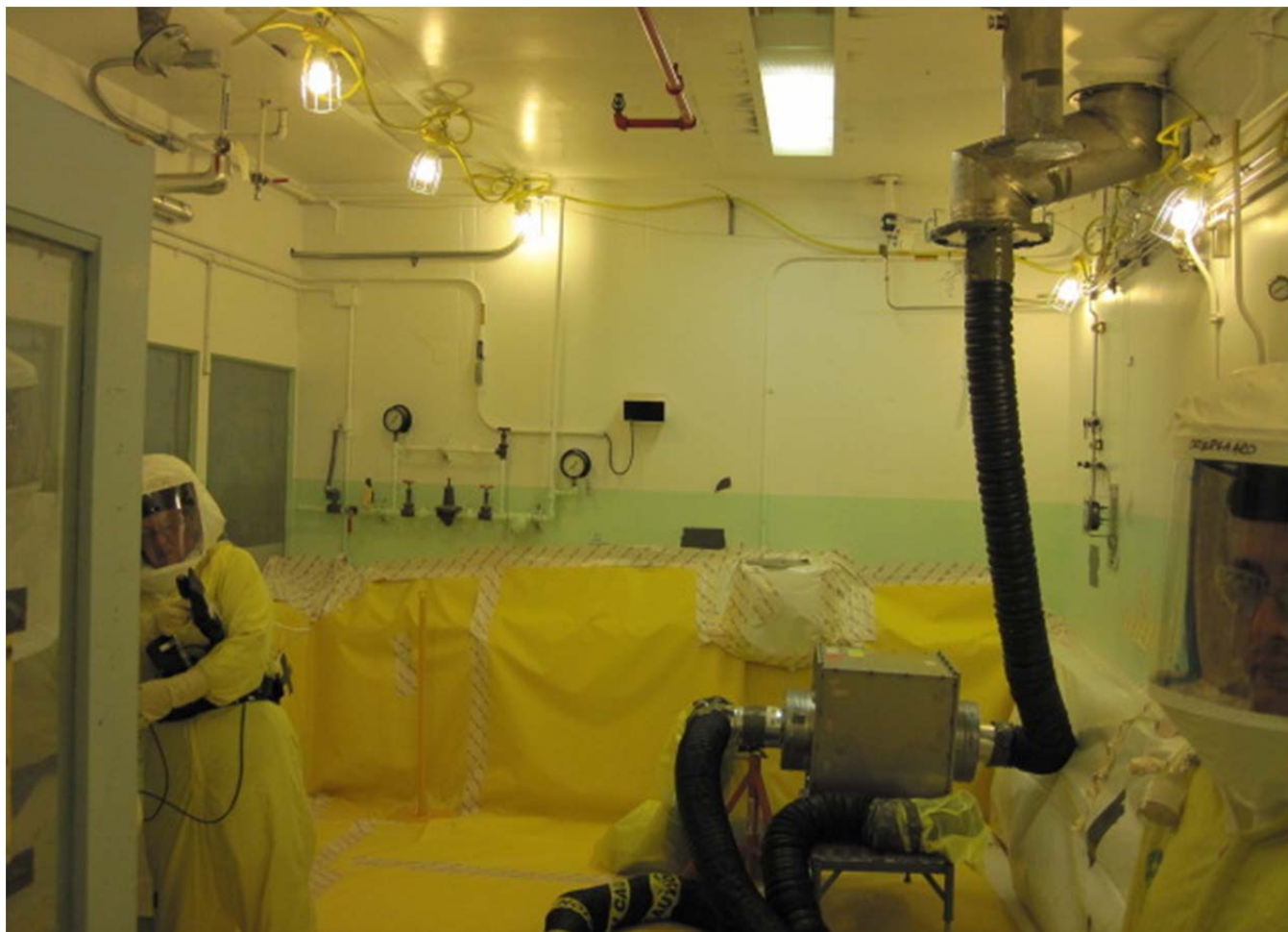


Photo 1

Bulk area cleanout is in progress in the Analytical Laboratories, in preparation for building demolition. Room 149, pictured here, was previously posted as an airborne-radioactivity area and was downposted this week to enable area cleanout.

Final preparations were completed and external independent reviews conducted of readiness to post most of the RMA and RMC Line process areas as permanent ARAs/High Contamination Areas, as well as Beryllium Regulated Areas where this is applicable. In the RMA Line process area, one of the D&D teams began physical isolation of four inter-connected gloveboxes in room 235-A1 from building ventilation. Another team continued preparations to degrease glovebox HA-23S prior to initiating chemical decontamination with Aspigel. Electrical isolations have been completed in room 235-A3. In the RMC Line, process equipment removal continued on the three HC-15A, B and C gloveboxes, port activations have begun on glovebox 227S, and mechanical isolations continued on several other RMC Line gloveboxes. Electrical isolations have now been completed in rooms 230A and B, and in room 228-C.

2736-Z/ZB Vault Complex

Removal of ventilation filters and size reduction of highly contaminated ductwork is continuing to ready 2736-ZB building for demolition later this year. Detailed planning for electrical isolation of the four vault complex buildings and two ancillary structures has been completed.

Infrastructure, support systems, and equipment removal

More than 50 containers of radioactive waste were shipped from PFP this week, including 2 roll-off containers with 14 cubic meters of LLW shipped to ERDF, and 3 Standard Waste Boxes and 47 drums containing 15 cubic meters of transuranic waste shipped to the Central Waste Complex. The process transfer line removal team continued installing glovebags and preparing for the next phase of removals. One part of the process vacuum removal team size reduced another 21 feet of previously removed pipe, while the remainder of the team continued removing highly contaminated ductwork and filters from the 2736-ZB building. The team also worked with PFP Maintenance to prepare for isolation of deactivated filter rooms 311 and 316, followed by removal of 112 contaminated HEPA filters from each room beginning next week.



Photo 1

Waste drums filled with transuranic waste, including pieces of Gloveboxes WT-4 and 5, previously removed from the 242-Z Facility, are loaded for shipment.

RL-0013 Solid Waste Stabilization & Disposition

RL-0013C:R1.1: Mixed Low-Level Waste (MLLW)/Low-Level Waste (LLW) Treatment

ACTIVITY	SOLID WASTE STABILIZATION & DISPOSITION
Ship 1,800 m ³ of MLLW/LLW for treatment and disposal	<i>Total Completed with Recovery Act funds</i>
	<ul style="list-style-type: none"> • 1,699 m³ shipped <ul style="list-style-type: none"> ○ 1,194 m³ treated and disposed ○ 505 m³ at offsite treatment facilities awaiting processing. Treatment is scheduled for FY11

Two shipments of MLLW debris were shipped to Perma-Fix Northwest (PFNW) for treatment by macro-encapsulation this week. One of the two shipments was made from the Waste Retrieval Project (WRP) and included 48 drums (10 m³). The other shipment included a large fiberglass-reinforced plywood box (43.5 m³) from the Central Waste Complex (CWC). The processed waste from these shipments will be returned to the Hanford Site for disposal in the mixed waste disposal units at the low-level burial grounds.



Photo 3

Hanford workers load a large fiberglass-reinforced plywood box onto the Super 7A overpack shipping container platform. The overpack shipping container consists of a base platform and a top cover. Once the box is secured on the base, the workers will replace the top cover to prepare for shipment.

RL-0013C:R1.2: Transuranic (TRU) Waste

ACTIVITY	SOLID WASTE STABILIZATION & DISPOSITION <i>Total Completed with Recovery Act funding</i>
Retrieve 2,500 m ³ of suspect TRU waste	<ul style="list-style-type: none"> • 467 m³ are staged, pending shipment • 1,302 m³ shipped to a treatment, storage, or disposal facility
Retrieve 50 m ³ of suspect remote-handled TRU waste	<ul style="list-style-type: none"> • 7 m³ are staged, pending shipment. • 78 m³ shipped to a treatment, storage, or disposal facility

At Trench 17 of the 3A burial ground, the project completed installation of shoring box walls on Box 80 and continued repairs on Box 14. Mitigation of contaminated soil and spoil piles began.

At 4B burial ground, three pieces of Trench 11 debris were removed as well as one metal box and one drum (14.3 m³). Completed exposing three containers for removal and continued excavation of concrete Box 105 (46 m³). The last two remote-handled (RH) concrete boxes (1.7 m³) were removed from Trench 11 and eight small concrete boxes (6.2 m³) were overpacked into concrete shielded overpacks and shipped to CWC. The assay campaign began on five waste containers in the 4C Process Area.

At the 12B burial ground, 57 containers were removed from Trench 17. Fifty-two drums were assayed in the Gamma Assay System, 12 drums were vented and an additional 12 drums were x-rayed. Excavation in Trench 17 continued on the north end. Forty-eight drums in eight 8 x 4 x 4 foot waste boxes were shipped to PFNW and 8 x 4 x 4 foot waste boxes were filled with 55-gallon LLW drums and the containers were marked/labeled.

TRU Repackaging & Shipments

ACTIVITY	SOLID WASTE STABILIZATION & DISPOSITION <i>Total Completed with Recovery Act funding</i>
Repackage 850 m ³ of WIPP certifiable TRU waste	<ul style="list-style-type: none"> • 947 m³ have been repackaged
Disposition 2,000 m ³ of contacted-handled TRU waste	<ul style="list-style-type: none"> • 1,665 m³ have been disposed

A total of 17 drums were repackaged at T Plant this week. In conjunction with the Central Characterization Program, four TRUPACT-II shipments left the Hanford Site bound for the Waste Isolation Pilot Plant (WIPP), for a total of 195 shipments completed since shipments resumed in March 2010.

RL-0030 Soil & Groundwater Remediation, Groundwater/Vadose Zone

RL-0030.R1: Central Plateau Soil & Groundwater

ACTIVITY	<i>Week of June 10</i>	<i>Complete to Date with Recovery Act funds</i>
Install 265 wells and/or boreholes along the river and in the Central Plateau	--	303
Decommission 280 old wells and boreholes that are no longer of service	5 wells completed	259
Construct the 200 West Groundwater Treatment Facility	71% complete	

200 West Groundwater Treatment Facility

Recent construction of the process and transfer facilities included (listed by facility):

- *Process buildings*
 - Radiological Building: Ongoing activities include instrumentation and controls rough-in. Completed stainless steel process piping rough-in in the trenches with overhead piping installation continuing. Continued electrical wire pulling and feeders as well as controls profibus.

- Bio-Process Building: Installation of electrical panels, switchgear, fire alarm, lightning protection, and exterior transformers continued. Installation of the C- and A-line utility racks process piping continued. The fire protection wet system installation continued as well as HVAC installation. Installation of the windows was continued to complete close in of administration area to start sheetrock activities. Also, continued prep for setting main switch gear and rough in in the administration area.
- Bio Pad: Installation of vapor off-gas ductwork and blower equipment continued as did installation of racks and panels, conduit, sleeves, cabling for lightning protection, and disconnects for an overhead crane. Completed installation of overhead crane rails with load testing initiated with additional activities pending. Continued excavation of Z-line swell and site perimeter grading.



Photo 4

Installation of blower motors and off-gas ductwork continued on the Bio Pad at the 200 West Groundwater Treatment Facility.

- *Transfer buildings*
 - Extraction Building #1: Construction acceptance testing continued.
 - Extraction Building #2: Construction acceptance testing was initiated on mechanical, electrical, and process elements of the building.
 - Injection Building #1 & #2: Installation of service gears, piping, and/or pumps continued. Initiated CAT testing on MEP at Injection Building #1.

RL-0040 Nuclear Facility D&D – Remainder of Hanford

RL-0040.R1.1: U Plant/Other D&D

CENTRAL PLATEAU FACILITIES DEMOLISHED WITH RECOVERY ACT FUNDS

- 211U Cold Chemical Makeup Tank Farm
 - 211UA Cold Chemical Makeup Tank Farm Addition
 - 203UX Gas Storage Facility
 - 2701M Office Bldg
 - 272E Fabrication, Mockup Shop Bldg
 - 2716E Power Maintenance Storage Bldg
 - 2722W Welding Laboratory Bldg
 - 224UA UO3 Calcination/Load-out Facility
 - 2710W Coal Handlers Shed*
 - 2701EC 209-E Guard Station*
 - 2902E Water Storage Tank*
 - 2734EA Gas Cylinder Storage Bldg
 - 275E Carpenter Shop Bldg
 - MO104 Mobile Office
 - MO405 Mobile Office
 - MO840 Mobile Office
 - X8 Motor Car Shed
 - 224U UO3 Plant Concentration/Load-out Bldg
 - 284WB Package Boiler Plant
 - 209EA 90 Day Storage Pad*
 - 2902W Water Storage Tank*
- TOTAL: 108,951 square feet**

PLANNED FOR D&D/IN PROGRESS

- 284E Power House & Steam Plant
- 209E Critical Mass Laboratory
- 284W Power House & Steam Plant

*Not part of the Key Performance Parameter

U Canyon

CHPRC crews continued pouring grout into U Canyon cells, delivering approximately 750 cubic yards of grout in several pours among the canyon's Cells 1-16. Preparations to remove the D-10 Tank from Cell 30 also continued, with modifications to the shipping cask lid completed and the cask returned to the U Canyon site.



Photo 5

CHPRC crews continued to deliver grout into U Canyon cells, distributing approximately 750 cubic yards of grout among Cells 1-16.

U Plant Ancillary Facilities

Closure documentation is being prepared.

200 East Core Industrial Area

At the 284-E Power House demolition site, CHPRC demolition crews lowered the last of the structure's five boilers. Processing and loadout of debris from the site continues.



Photo 6

All five boilers have now been lowered at the 284-E Power House.

200 West Area Industrial Facilities

Asbestos abatement continued inside the 284-W Power House building on the structure's second, third and fourth floors.

209-E Criticality Mass Laboratory

CHPRC crews continued size-reduction of Tank 104, the first of 11 slab tanks in the facility that must be removed before the 209-E facility is downgraded to a Less Than Hazard Category 3 (non-nuclear) facility and ultimately demolished.



Photo 7

Nuclear Chemical Operators in the 209-E Criticality Mass Laboratory employ a shielded cutting method to continue size-reducing Tank 104 for disposal. The tank is the first of 11 slab tanks that must be removed from 209-E before the facility can be reduced from a Hazard Category 3 (nuclear) facility and demolished.

RL-0040.R1.2: Outer Zone D&D/Waste Sites

OUTER ZONE FACILITIES DEMOLISHED WITH RECOVERY ACT FUNDS

212N Storage Building	6652M Fallout Laboratory
212P Electrical Storage & Transformer Shop	6652R Acid Storage Shed
212R Storage Building	6652C Space Science Laboratory
614 Monitor Station	6652CSHED Storage Building
646 Radioecology Field Laboratory	6652D Pump House
6652G ALE Field Storage Building	6652T Fire Protection Lower Pump House
6652H ALE Laboratory 1	6652U Rattlesnake Mountain Upper Pump House
6652I ALE Headquarters	623A Plant Radio Relay Bldg
6652J ALE Laboratory II	T520-6 Navy MARS Radio Station
6652S Sentry Shed*	6631 Radio Telescope Pedestal*
6634 ENW Tower and Building*	6630 Hodges Well Pumphouse*
6635 Crown Castle/Cingular Tower and Building*	6636 Columbia Communication Tower and Building*
6637 Tri City Amateur Radio Tower and Building*	6633 Franklin County Communication Building*
6632 Verizon Telephone Enclosure*	TOTAL: 62,748 square feet

*Not part of the Key Performance Parameter

North Slope Debris Removal

Personnel with CHPRC subcontractor Sealaska Environmental Services have now completed cleanup of Areas 12, 13, 15, 16, and 18 as crews await the completion of cultural and environmental reviews of remaining debris sites.

Arid Lands Ecology Reserve

Revegetation of cleared sites on ALE is ongoing while closure documentation for removal of facilities from the area is prepared.

D&D of Railcars Located on the 212-R Rail Spur

CHPRC crews and subcontractor Clauss Construction delivered the second of the cask well railcars to the Environmental Restoration Disposal Facility (ERDF) and prepared another for shipment.

Waste Sites

The following table showcases CHPRC's recent progress in outer zone waste remediation.

WASTE SITE IN PROGRESS	TONS OF CONTAMINATED SOIL REMOVED	
	<i>Week Ending June 3, 2011</i>	<i>Total to Date with Recovery Act funds</i>
BC Control Area	6,600	447,700

Recent activities regarding the outer zone waste sites included (listed by operable unit or site):

- *200-MG-1*
 - 600-218: Remediation activities are complete, contingent on sampling. Sampling results are favorable, no backfill is required. Closure paperwork is in process.
 - 600-220: Sample results are favorable. Backfill is complete.
 - 600-228: Initial excavation activities are complete contingent upon sample results. Sampling was performed on June 8, 2011.
 - 600-281: Field excavation activities pending sampling results are complete. Preliminary sample results indicate residual contamination above cleanup criteria at one location.
 - 216-S-19: Direct push test sampling is complete. Laboratory results of surface sampling were analyzed revealing some elevated levels of contamination above the remedial action levels. Additional excavation was completed on June 1, 2011. Verification sampling is anticipated in early June.
 - 216-S-26: Initial excavation was completed pending sample validation last week. Sampling was performed on May 25, 2011.
 - 200-W-147-PL: Excavation is complete. Backfill is ongoing.
 - 600-49: Initial excavation field activities are complete contingent upon sample results. Verification sampling is anticipated in mid June.
- *BC Control Area*
 - Radiological down-post surveys and localized spot removal are ongoing.

RL-0041 Nuclear Facility D&D – River Corridor Closure Project**RL-0041.R1.1: 100K Area Remediation****100K AREA FACILITIES DEMOLISHED WITH RECOVERY ACT FUNDS**

• 183KW Chlorine Vault	• 116KE Reactor Exhaust Stack
• 183.1KW Headhouse	• 118KE Horizontal Control Rod Storage
• 183.2KW Sedimentation Basin	• MO048 Construction Lunch Trailer
• 183.3KW Filter Basin	• MO969 Ops/HPT Change Trailer
• 183.7 KW Pipe Tunnel	• 115KE Gas Recirculation
• 110KE Gas Storage Facility	• 185-K Potable Water Treatment Plant*
• 117KE Exhaust Air Filter Bldg	TOTAL: 428,260 square feet

*Not part of the Key Performance Parameter

PLANNED FOR D&D/IN PROGRESS

• 183.4KW Clearwell	• 181KE River Pump House
• 183.4KE Clearwell	• 1605KE Guard House
• 190KW Main Pump House	• 181KW River Pump House
• 190KE Main Pump House	

Facility D&D

At the 181-KW River Pump House Structure, CHPRC crews began size-reduction of the structure's six 39,000-pound, 65-foot-long pumps for disposal, and are preparing to begin demolition of the structure. Demolition and loadout continued on the east and west sides of the 183.3-KE Filter Basins, both 120,000-square-foot 183.4-KE and 183.4-KW Clearwells, and below-ground structures at the site of the demolished 183.1-KE Headhouse.



Photo 8

CHPRC workers use an oxygen torch to cut the casings on the 65-foot-long pumps removed from the 181-KW River Pump House. All six pumps will be severed into two parts for removal from the site and delivery to the Environmental Restoration Disposal Facility (ERDF).

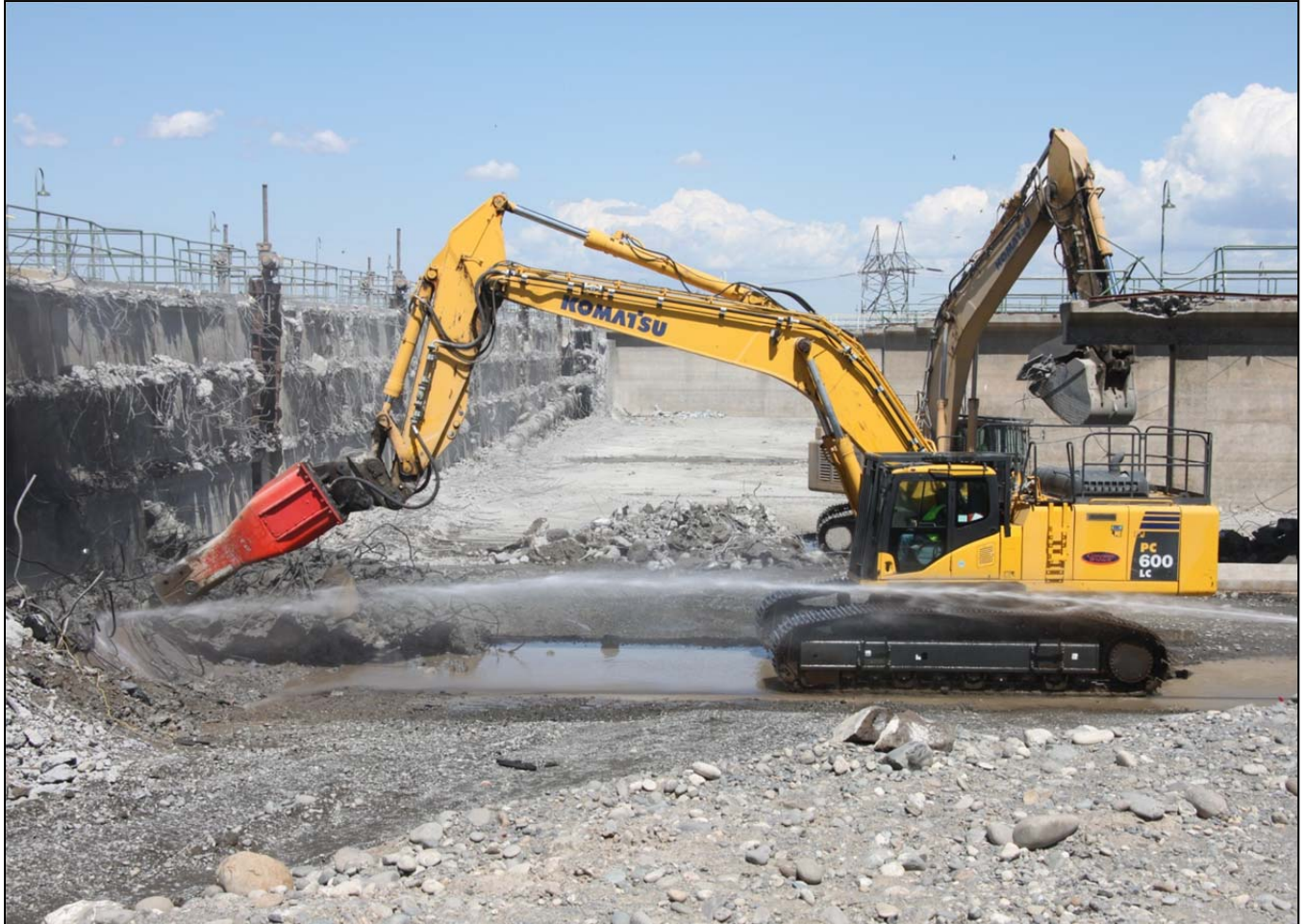


Photo 9

Demolition and loadout of debris continues on the west side of the 183.3-KE Sand Filters, part of the K East Sedimentation Basins that once held 19 million gallons of water for use in the K East Reactor system.

Infrastructure Utilities Upgrade Project

The new A-9 substation has been switched on and is fully operational.

Waste Sites

CHPRC continued excavating the 100-K-53 waste site, the 100-KE Glycol Heat Recovery Underground Pipelines, with a total of 20,899 tons removed to date. The project is awaiting sampling results for the 116-KE-1 waste site.

UPCOMING EVENTS

RL-0011 Nuclear Materials Stabilization & Disposition

RL-0011.R1: Plutonium Finishing Plant D&D

- Enlarge a doorway and transfer glovebox 188-1 to waste operations.
- Complete D&D and remove glovebox 179-1, the last remaining glovebox in the laboratory and backside vault areas.
- Remove or stabilize contaminated ventilation ductwork in 2736-ZB, complete electrical isolations and transfer the 2736-Z vault complex to CHPRC D&D for demolition.
- Isolate gloveboxes HA-15, HA-16L, HA-16BS and HA-16CS from building ventilation and prepare them for removal from RMA Line
- D&D the remaining gloveboxes in the RMA/RMC Line process areas.
- Complete final area cleanout in the Standards, Analytical and Plutonium Process Support Laboratory areas.
- Remove contaminated HEPA filters from 234-5Z final filter rooms 311 and 316.
- Continue removing process vacuum piping, process transfer lines and asbestos insulation from throughout 234-5Z building.

RL-0013 Solid Waste Stabilization & Disposition

RL-0013C:R1.1: MLLW Treatment

- Three MLLW shipments (14.1 m³) planned from the WRP 12B burial ground to PFNW for treatment by macro-encapsulation.
- Two MLLW shipments (0.8 m³) planned from CWC to PFNW for treatment by macro-encapsulation.
- One LLW shipment (0.4 m³) planned from CWC to PFNW for volume reduction and radiological stabilization.

RL-0013C:R1.2: TRU Waste

- TRU Retrieval
 - 3A burial ground
 - Ship Trench 17 Boxes 14 and 80 to CWC and Box 15 to PFNW.
 - Complete repairs to Box 14 in Trench 17 and ship to CWC.
 - 4B/4C burial ground
 - Remove concrete Box 105 (46 m³) from Trench 11 of the 4B burial ground.
 - Remove glove box and metal containers from Trench 11 of the 4B burial ground.
 - Complete a work package to remove Box 101 from Trench 11 of the 4B burial ground.
 - Resume overburden removal in Trench 7 of the 4B burial ground.
 - Complete 4C Process Area user validation/functional test of Mobile Drum Venting System procedure.
 - Vent 12 drums at the 4C Process Area MDVS and load the drums into standard waste boxes in preparation for shipment.
 - Continue assay in 4C Process Area of waste containers removed from Trench 11 of the 4B burial ground.
 - Complete shipments from 4C Process Area to PFNW (15.7 m³) and CWC (58.9 m³).
 - 12B burial ground
 - Continue removal of waste drums.
- TRU Repackaging and Shipments
 - Four planned shipments.
- Suspect TRU Waste Shipments

- One TRU shipment (38.1 m³) planned from WRP to PFNW for repackaging.

RL-0030 Soil & Groundwater Remediation, Groundwater/Vadose Zone

RL-0030.R1: Central Plateau Soil & Groundwater

- Continue construction of the 200 West Groundwater Treatment Facility.
- Continue well decommissioning.

RL-0040 Nuclear Facility D&D – Remainder of Hanford

RL-0040.R1.1: U Plant/Other D&D

- Continue pouring grout into Cells 1-16 of U Canyon.
- Continue size-reduction of slab tanks inside the 209-E Criticality Mass Laboratory.
- Complete processing and loadout of the five boilers at the 284-E Power House.

RL-0040.R1.2: Outer Zone D&D/Waste Sites

- Continue to deliver well cask railcars to ERDF for disposal.
- Continue planning for and remediating 200-MG-1 waste sites

RL-0041 Nuclear Facility D&D – River Corridor Closure Project

RL-0041.R1.1: 100K Area Remediation

- Continue demolition of 183.3-KE Filter Basin.
- Perform transplant of barn owl from 181-KW River Pumphouse to a nature reserve.
- Begin demolition of the 181-KW River Pumphouse structure.
- Continue excavating soil from and planning for remediating 100K Area waste sites.