





# Habitat Impacts

A wide-angle photograph of a sunset over a large body of water. The sky is filled with dark, heavy clouds, some of which are illuminated from below by the setting sun, creating a vibrant orange and red glow. The sun is positioned just above a dark, silhouetted mountain range that stretches across the horizon. The water in the foreground is dark and textured with small ripples, reflecting the colors of the sky. The overall mood is serene and dramatic.

A place....

A photograph of a sunset over a large body of water. The sky is filled with dark, heavy clouds, with a bright orange and red glow from the setting sun breaking through near the horizon. The water in the foreground is dark and calm, reflecting the colors of the sky. In the background, a range of dark mountains is silhouetted against the bright horizon. The overall scene is serene and atmospheric.

The top foot of the surface  
sediment has been churned and  
churned repeatedly



Native large species all but gone

A photograph of a sunset over a large body of water. The sky is filled with dark, heavy clouds, with a bright orange and red glow from the setting sun breaking through a layer of clouds just above the horizon. The water in the foreground is dark and calm, reflecting the colors of the sky. In the background, a range of dark mountains is silhouetted against the bright horizon.

Exploitation has gone on for  
decades



Sometimes the disturbance goes  
on day and night, 24 hrs. a day

Plant bio-diversity is virtually  
non-existent





A photograph of a sunset over a large body of water. The sky is filled with dark, heavy clouds, with a bright orange and red glow from the setting sun visible behind a range of dark mountains in the distance. The water in the foreground is dark and calm, reflecting the colors of the sky.

**A non-native plant species now  
dominates the entire area**

The top foot of the surface sediment has been churned and churned repeatedly



Native large species all but gone



A non-native plant species now dominates the entire area



Sometimes the disturbance goes  
on day and night, 24 hrs. a day



Plant bio-diversity is virtually  
non-existent



A photograph of a sunset over a large body of water. The sky is filled with dark, heavy clouds, with a bright orange and red glow from the setting sun breaking through a layer of clouds just above the horizon. The sun is positioned behind a range of dark, silhouetted mountains. The water in the foreground is dark and calm, reflecting the colors of the sky. The overall scene is serene and dramatic.

Photos courtesy of the Oregon  
Dept. of Agriculture

# Rockfish Conservation Area

OREGON

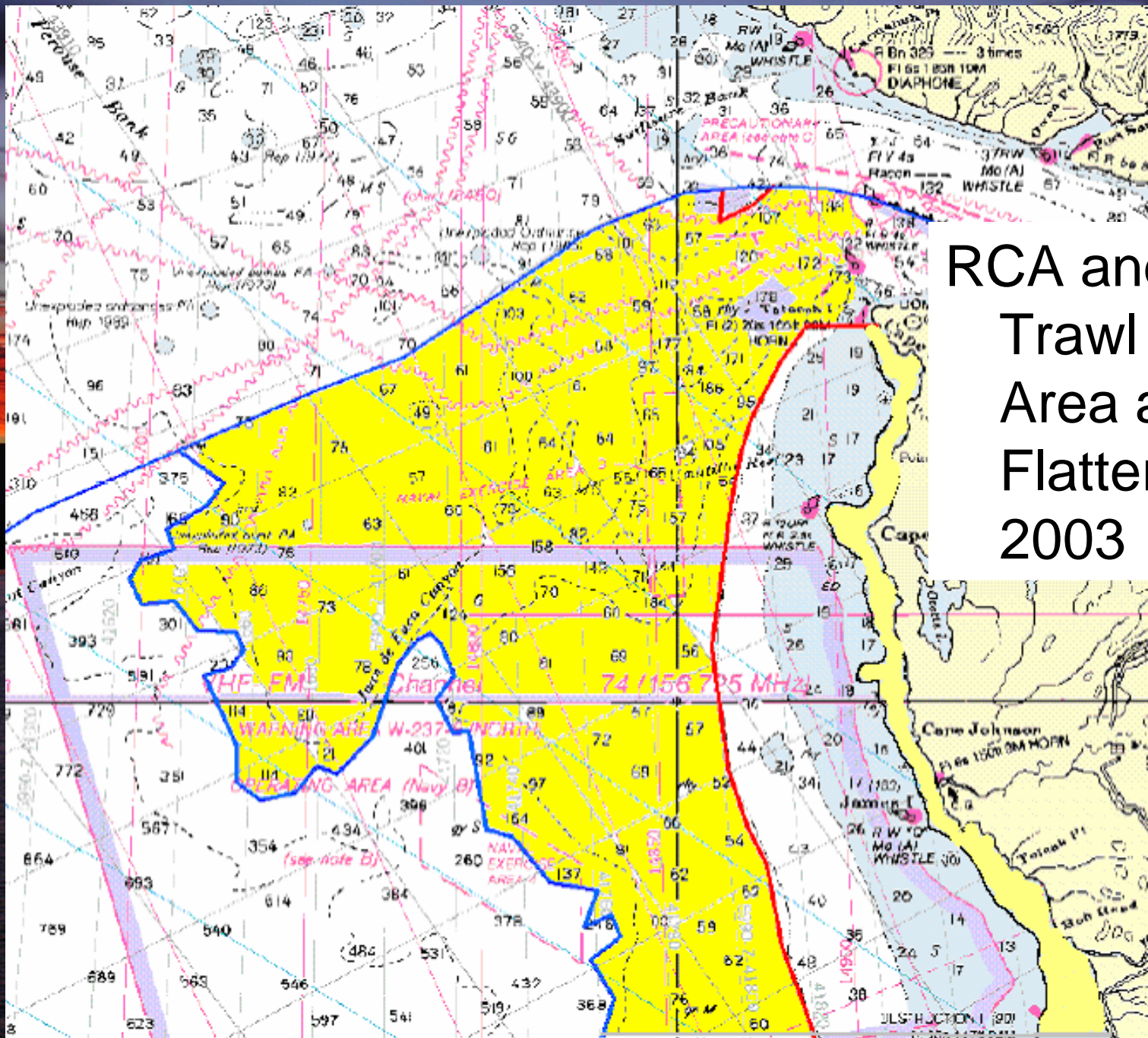




# Rockfish Conservation Area (RCA)



- Began in 2003
- Extends from Canada to Mexico
- Width varies from year to year and within the year
- Has closed a minimum 100 fm depth spread at all times
- 100-150 fms has been continuously closed to trawling

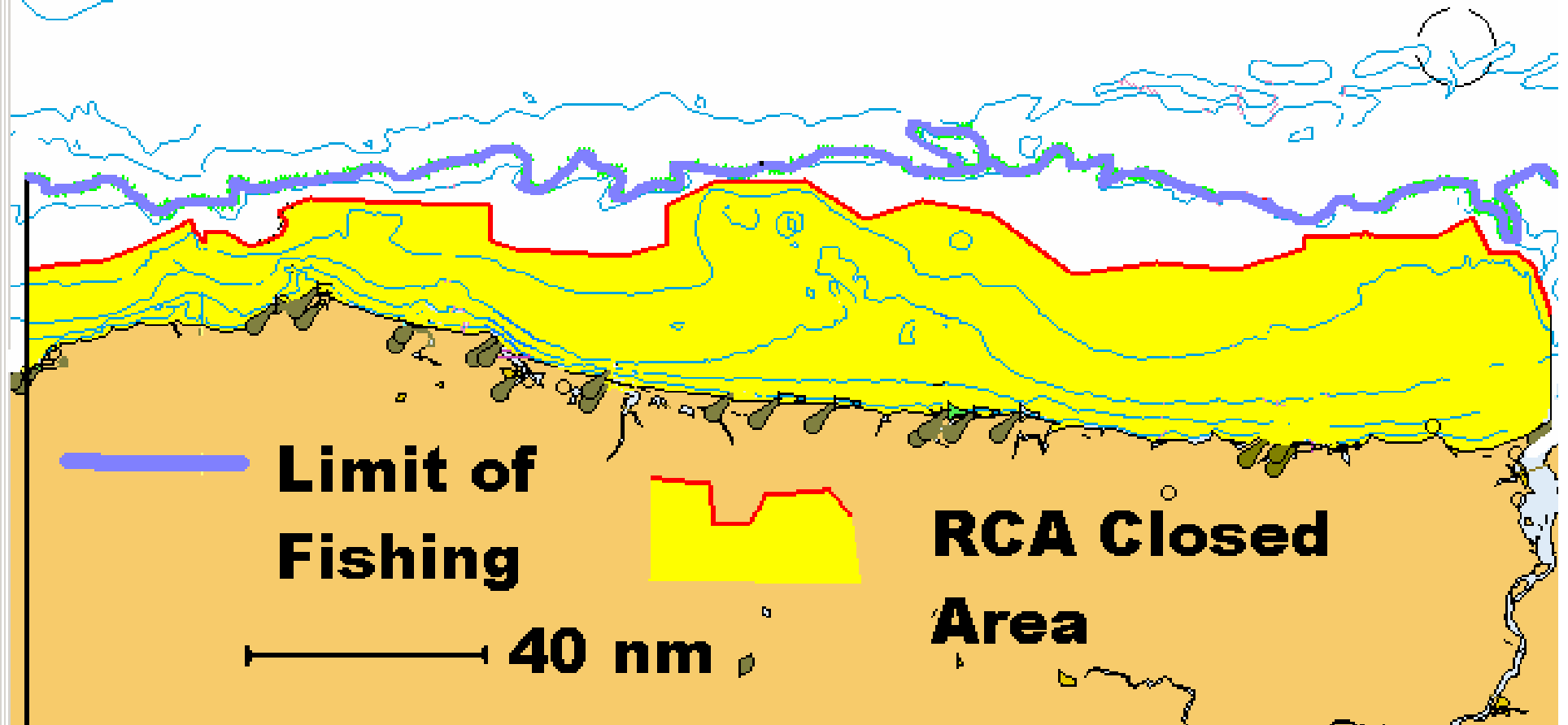


RCA and State  
Trawl Closed  
Area at Cape  
Flattery in  
2003

# OREGON RCA

## November/December, 2004

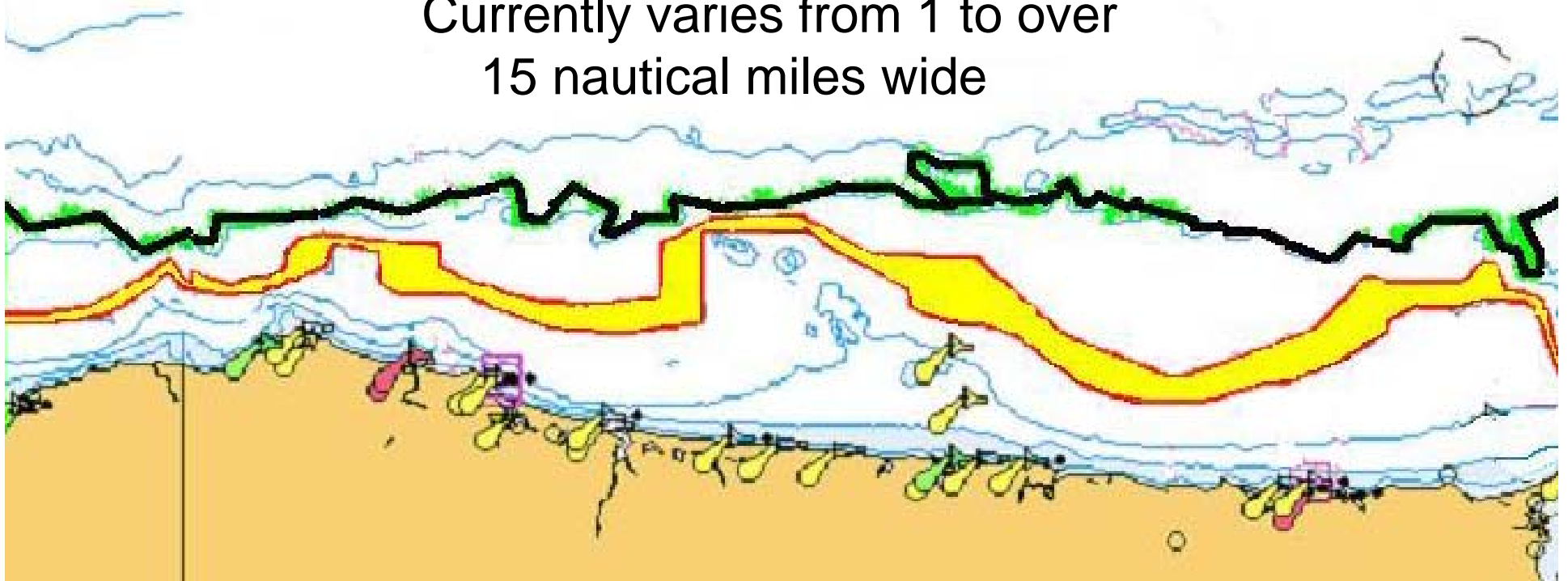
~250 Fathoms to the Shore

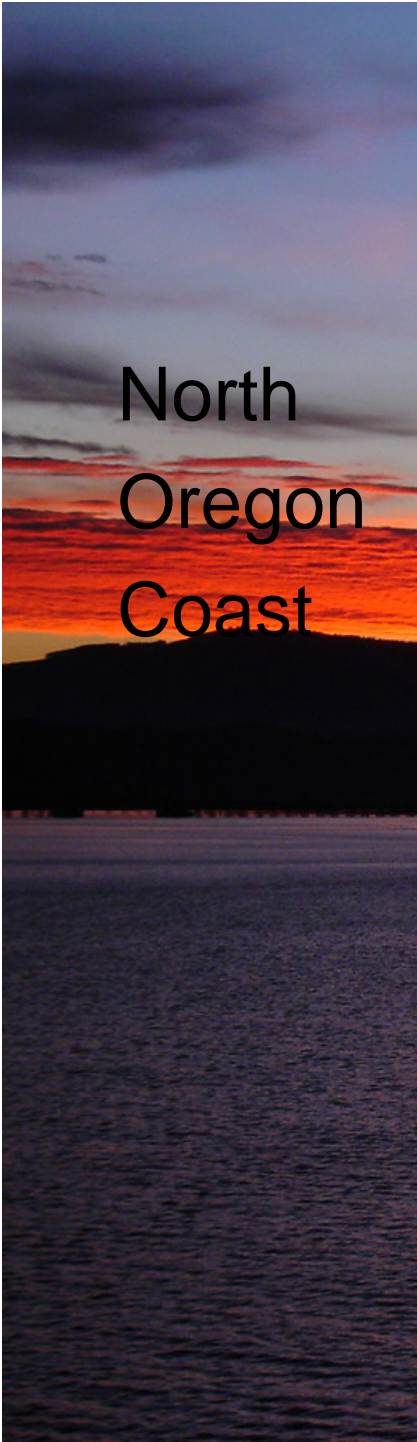


# Oregon RCA May 2005

~100 Fathoms to ~200 Fathoms Water Depth

Currently varies from 1 to over  
15 nautical miles wide





# North Oregon Coast

