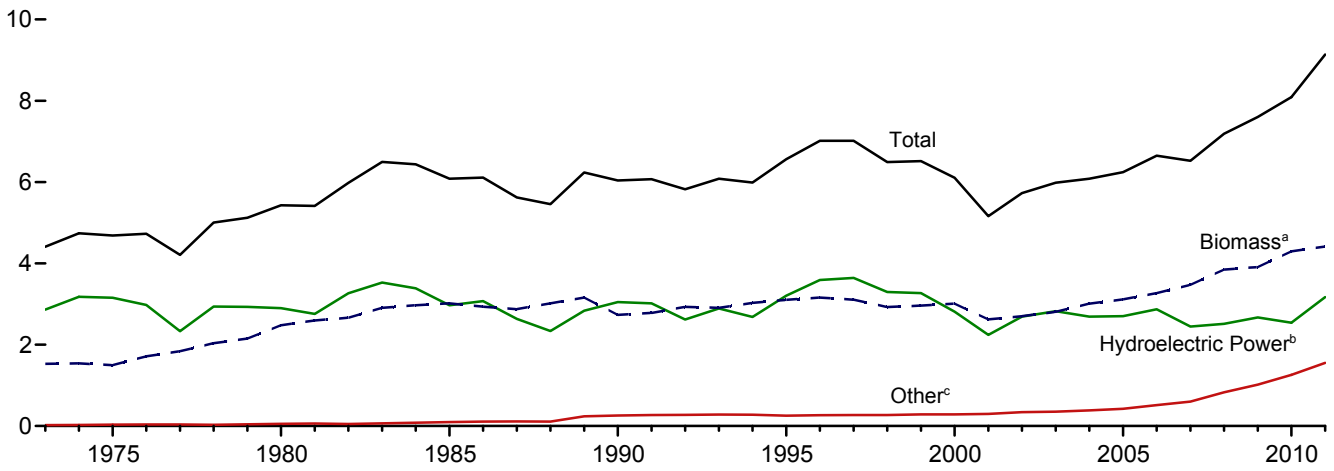
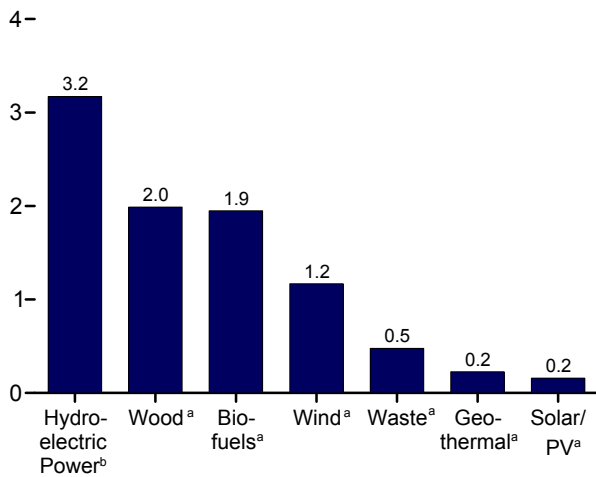


**Figure 10.1 Renewable Energy Consumption**  
(Quadrillion Btu)

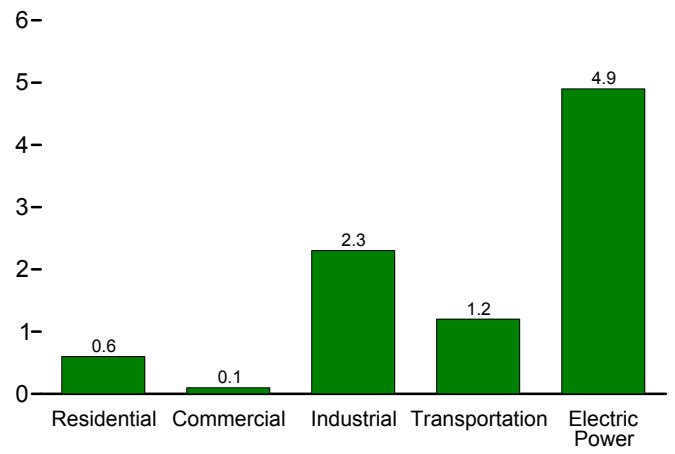
Total and Major Sources, 1973-2011



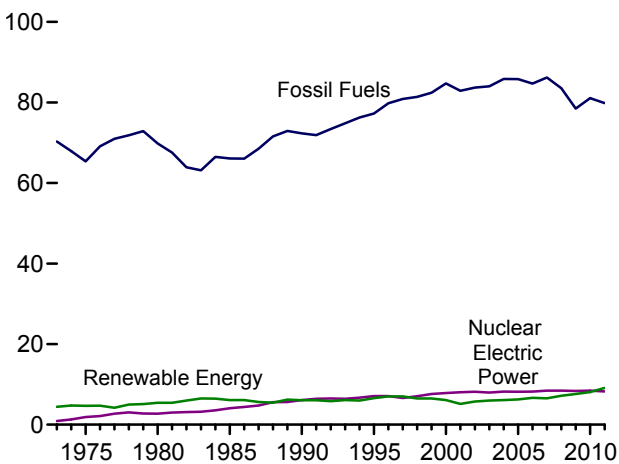
By Source, 2011



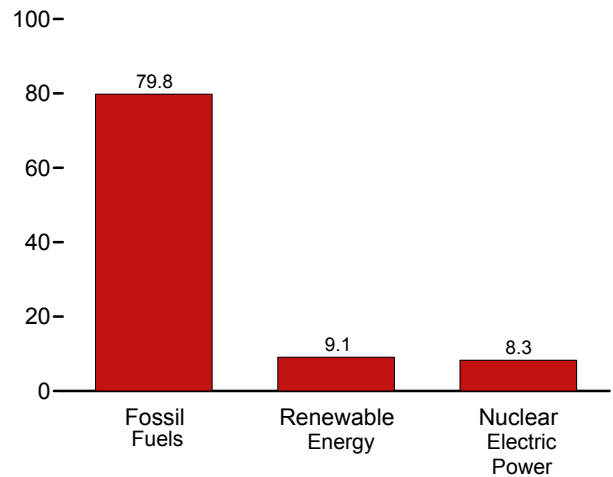
By Sector, 2011



Compared With Other Resources, 1973-2011



Compared With Other Resources, 2011



<sup>a</sup> See Table 10.1 for definition.  
<sup>b</sup> Conventional hydroelectric power.  
<sup>c</sup> Geothermal, solar/PV, and wind.

Web Page: <http://www.eia.gov/totalenergy/data/monthly/#renewable>.  
Sources: Tables 1.3 and 10.1-10.2c.