

---

# Connecting Kids to Coverage: 2nd National Children's Health Insurance Summit

Research Roundup  
Using Administrative Data to Inform Progress

Christopher Trenholm

November 1, 2011

**MATHEMATICA**  
Policy Research, Inc.

# Agenda

---

- Monitoring Coverage Progress
  - What to measure
  - Why
- Application: Quick Look at Eight States
  - Growth in coverage of children
  - Role of retention

---

# MONITORING COVERAGE PROGRESS

# Monitoring New Enrollment

---

- New program enrollment can be divided into three measures:
  - Number of transfers
  - Number of “churners”
  - Number of “true entries”
- Can inform specific policy questions
  - E.g., did that outreach show a gain in true entries?

# Monitoring Disenrollment

---

- Program disenrollment can likewise be divided into three measures:
  - Number of transfers
  - Number of “churners”
  - Number of “true exits”
- Can again inform specific policy questions
  - E.g., Did that improved renewal procedure show a decline in churners?

# Monitoring Retention

---

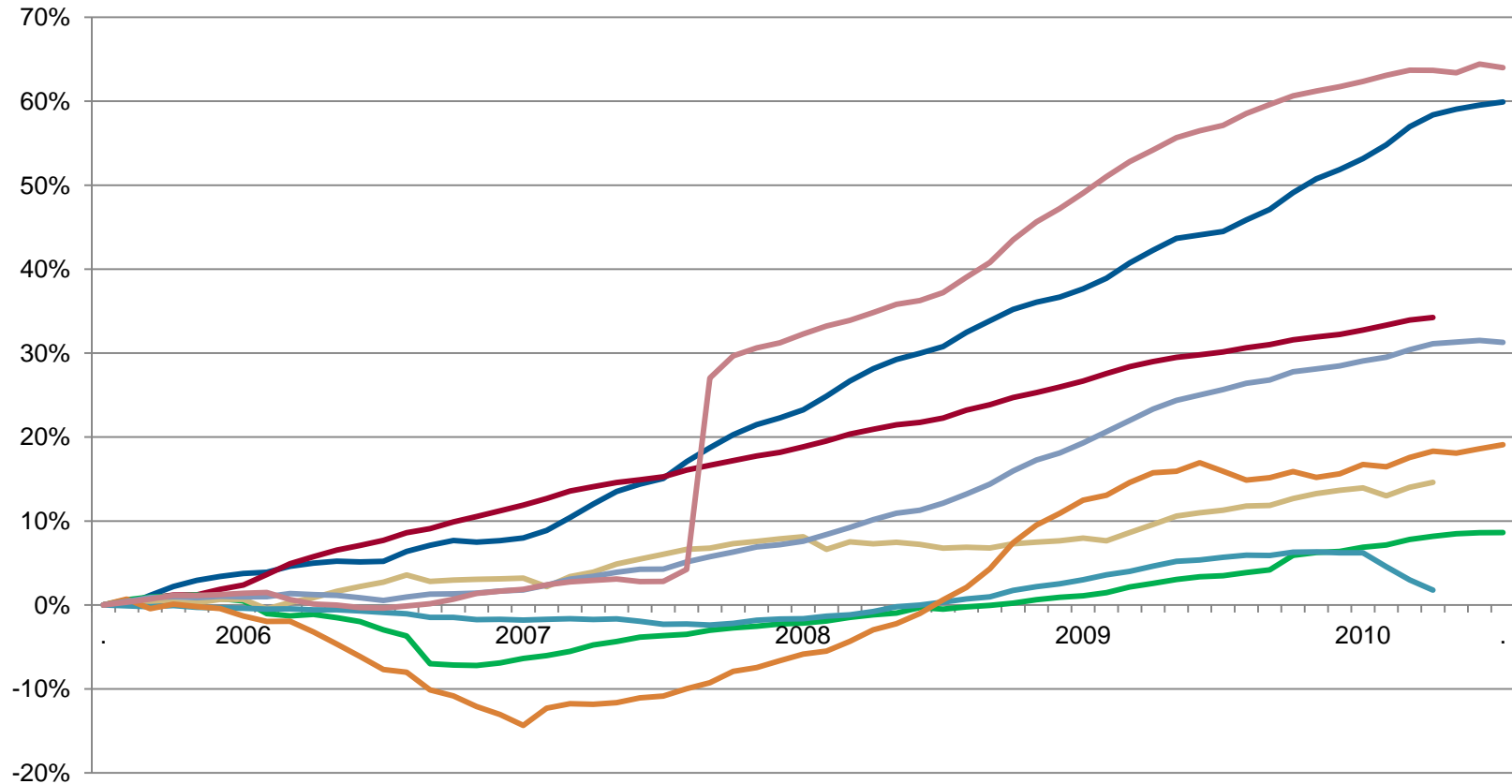
- Ideal for monitoring public coverage as opposed to program-specific coverage
- Proportion of new enrollees continuously covered for \_\_\_ months
  - E.g., [a] 6 Months, [b] 12 Months, [c]18 Months
- Far more reliable than renewal-focused measures

---

# A Quick Look At Eight States

# Public Coverage Has Been Growing Dramatically

Percentage Change in Medicaid and CHIP Enrollment, 2006-2010  
(Eight MaxEnroll States)

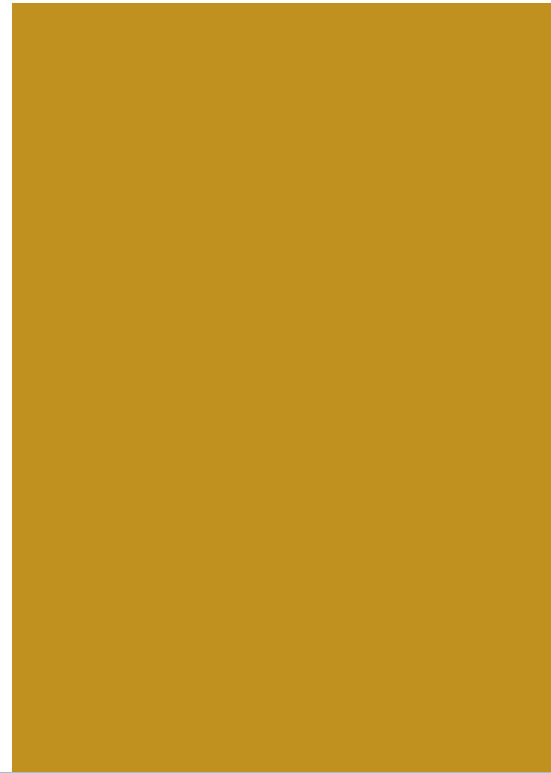




# Public Coverage Has Been Growing Dramatically (II)

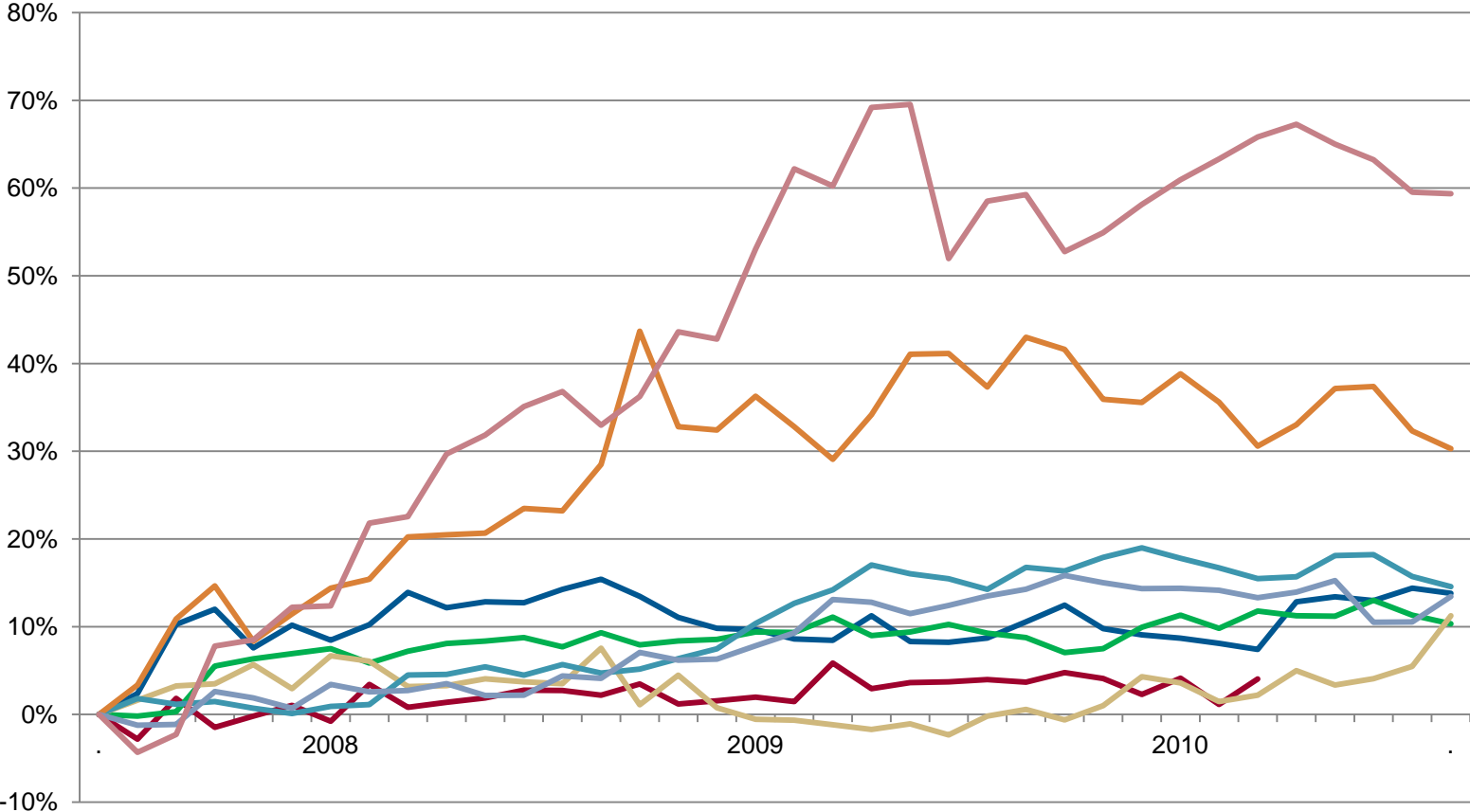
Overall Change in Medicaid and CHIP Enrollment, 2006-2010  
(Eight MaxEnroll States)

1,119,625



# And Retention Has Been A Driving Factor...

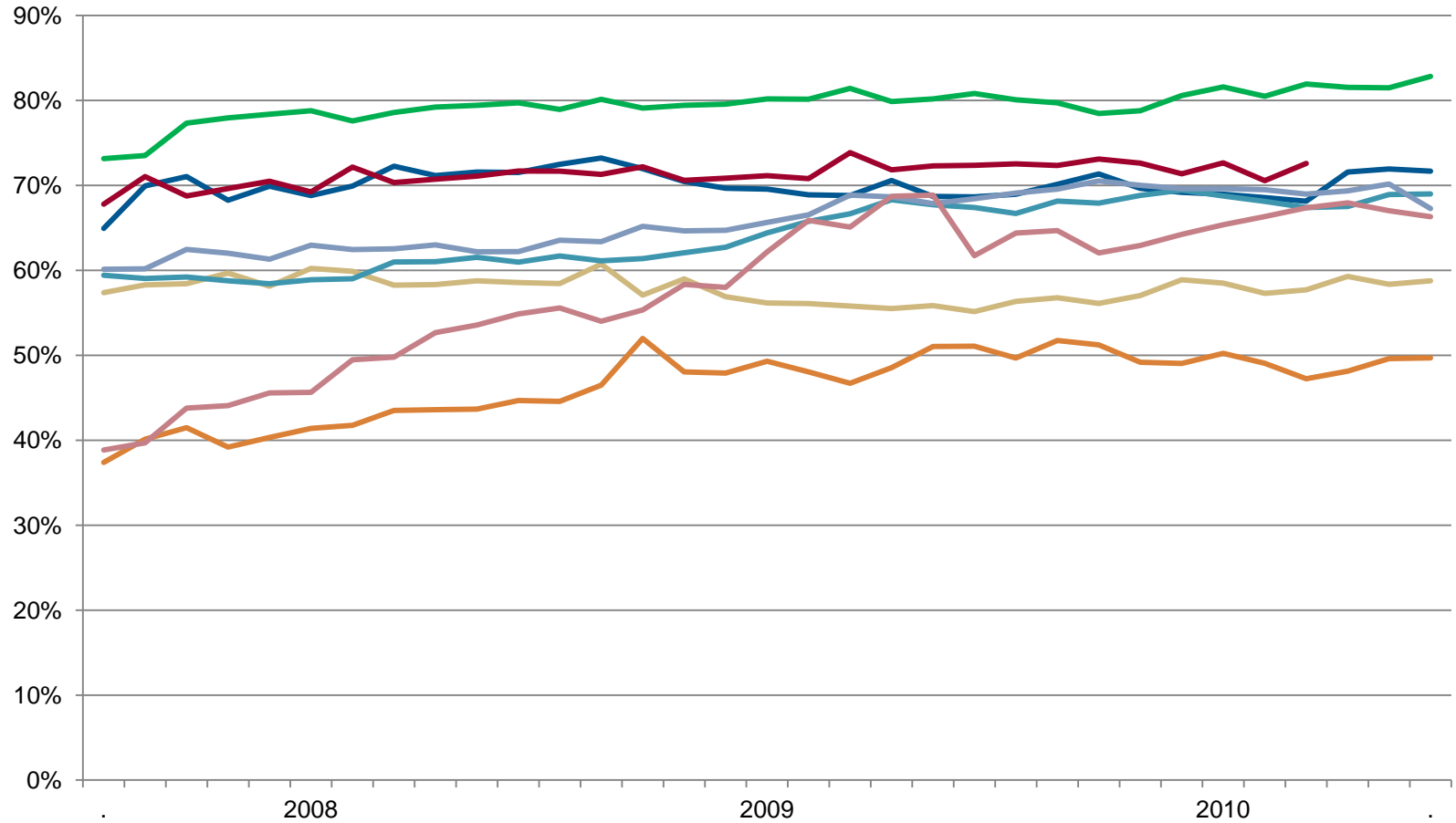
## Percentage Change in Medicaid and CHIP Retention\*, 2008-2010



\*Defined as Proportion of New Medicaid/CHIP Enrollees Continuously Covered for 18+ Months

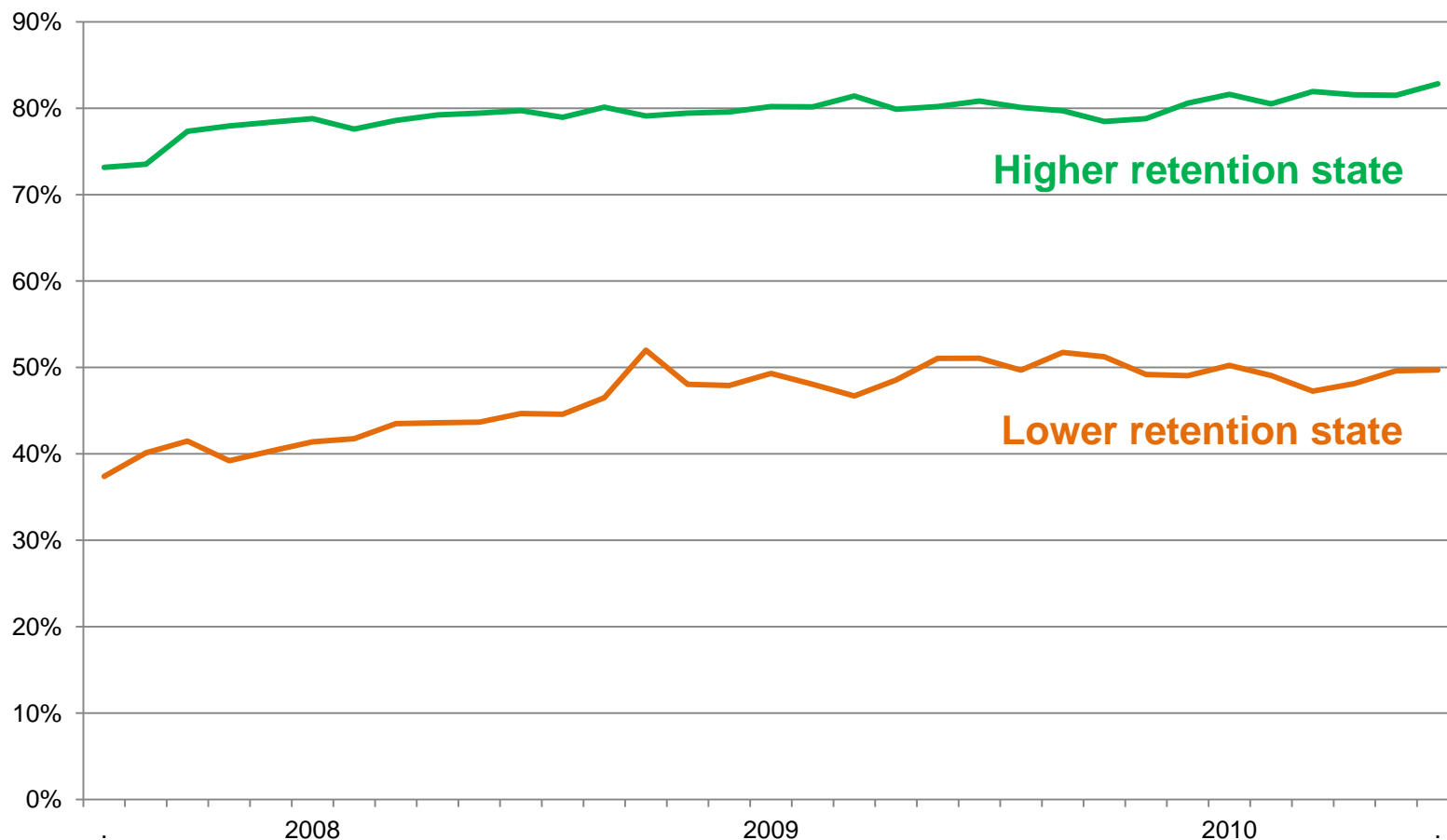
# ..But Retention Varies Dramatically Across States

## Proportion of New Enrollees Continuously Covered 18+ Months



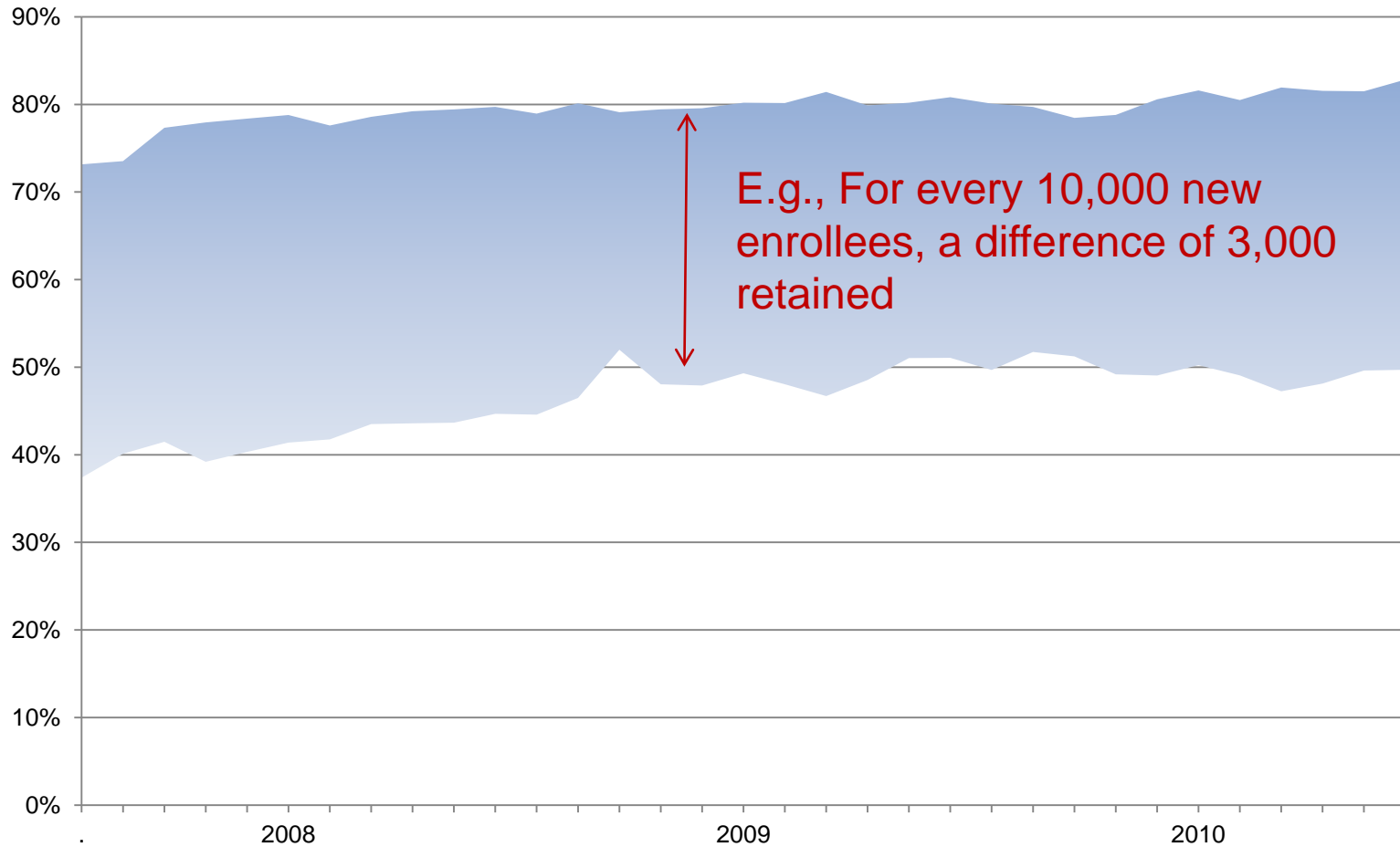
# ..But Retention Varies Dramatically Across States

## Proportion of New Enrollees Continuously Covered 18+ Months



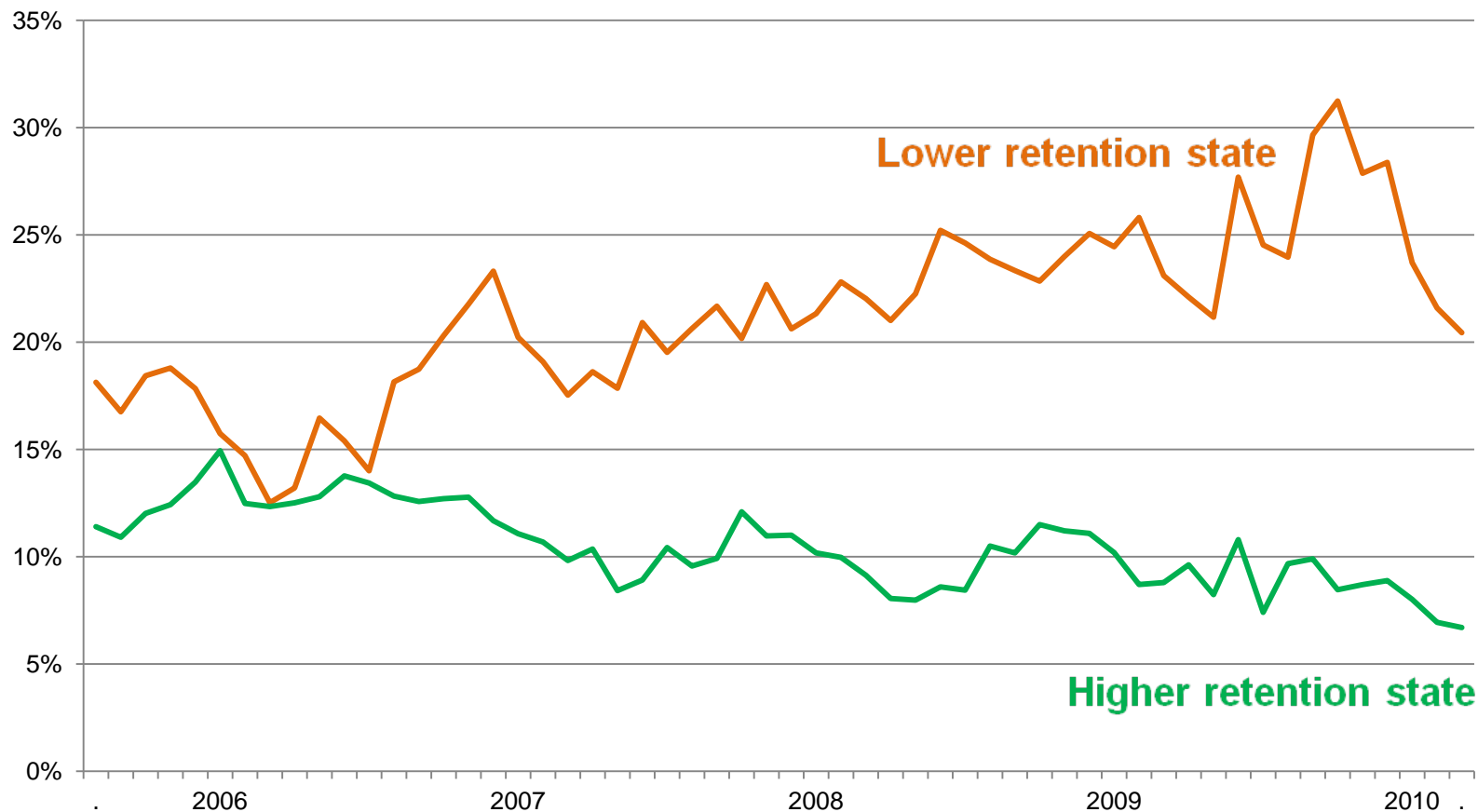
# Appreciating Retention Highs and Lows

## Proportion of New Enrollees Continuously Covered 18+ Months



# Appreciating Retention Highs and Lows (Pt. II)

## Proportion of Disenrollees “Churning” Back to Coverage Within 6 Months



# Thinking Forward to ACA

---

- State administrative data will be a vital source for assessing ACA implementation and monitoring ongoing progress across states
  - Outreach and enrollment
  - Retention
  - Transition
- Ongoing efforts to improve systems will be vital
  - Must prioritize measurement (data linkages and coding)
  - Will take time; phase-in reporting requirements?