

Employee Involvement



Don King

Washington Closure Hanford, LLC

Stacy Thursby

Washington Closure Hanford, LLC

August 2012



Safety Program and Culture

- S&H Program Tools
- Project Awareness Campaigns
- Involvement Activities
- Communications
- S&H Program Involvement
- Celebrate Success

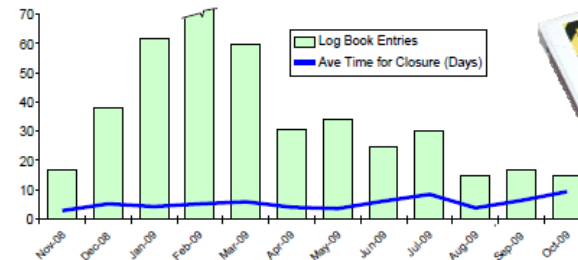


Safety - Tools

- Safety Management System (Establish the Process)
- Safety System/VPP Assessment Tool – used during annual review and report
- VPP Employee Survey
- Performance Indicators
- Focused Assessments – with Employee committees
- Employee Committees: Local Safety Improvement Teams- Log Books
- Employee/LSIT Logbook
- Face to Face Interviews – Improved Safety Culture



LSIT Log Book Management



The Next Step in Safety and Health

Safety - Tools

- Feedback and Continuous Improvement (Measure the Results) Assessments
 - Management/STS/ LSIT Walk-throughs Direct Observation ~ Employee Ownership
 - Quarterly updates of the Safety System-communicated to all employees
 - Focused safety observations- Safety by the Numbers-questions for all employees
 - Monthly Employee Committee Meetings-feedback from employees throughout the site/plant
 - Assessment Gap Tool – annual review



The Next Step in Safety and Health

Safety - Tools STS

Some of the benefits of being a certified STS include:

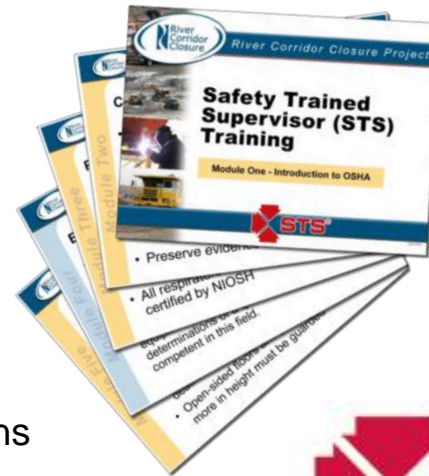
- Enhanced Knowledge of fundamental Safety Practices
- Employees with increased confidence when dealing with safety and Health issues or questions
- Recognition for safety leadership
- Opportunities for increased job responsibilities

The benefits for company are substantial as well:

- Enhanced safety culture and safety awareness
- Improved adherence to OSHA and DOE safety regulations
- Reduction in employee injuries both on the job and at home
- Increased productivity and profit

STS Checklist

- WCH provides a variety of checklist on several different safety topics and asks that certified STS professionals perform at least two safety walk downs per year.
- The results of the walk downs can become safety tools in and of themselves by creating an opportunity to discuss the results at POD meetings, LSIT, or any other safety meeting.
- Using these observation checklists for focused safety reviews.



Project Awareness Campaigns

- Healthy Living Campaigns
- Groundhog Day –The goal of this campaign is to review the past safety incidents and the lessons learned associated with these incidents to prevent similar incidents from occurring.
- Office Safety-Handrail Campaign
- Milestones and 90 Day Campaigns
- Vehicle Safety
- Heat Stress Awareness



GET-A-GRIP



On Slips, Trips, & Falls

With every step we take, we are exposed to the risk of slipping and falling.

The more we walk, the more we are exposed.

What Can Employees Do?

- Wear proper footwear: sturdy boots with good tread or specific shoes with traction
- Slow down when walking in slippery conditions
- Reduce the loads and materials being carried when walking in slippery conditions
- Walk with your hands out of your pockets for balance and to be ready to catch yourself if necessary
- Hold on to hand rails
- Walk on cleared/designated paths
- Clear snow and ice off of vehicles prior to use to include windshields and footboards

Exposure to slippery conditions such as ice, snow, oils, greases, and rain substantially increase the risk of slips, trips, and falls. According to the Bureau of Labor Statistics, nearly 15% of all lost workday accidents are due to slips, trips, and falls. The National Safety Council estimates the cost of each accident at \$34,000.

Your FINGERS Are Nothing to GAMBLE!



USE GUARDS **LOSE A FINGER** **NEAR MISS**

Don't Roll the Dice with Hand Safety!

STOP! GRAB THE RAIL



TO SAVE YOUR TAIL!



"Seatbelts are Nothing to Snicker At"



SPRING into SUMMER
Health and Safety Every Day

The Next Step in Safety and Health

Involvement Activities

- Interactive Safety Meetings – rotate ownership
- Guest speakers/All Hands
- Safety participation by all employees
- Employee Posters/Banners
- Make it fun...change it up!



TRUE or FALSE? Use coin to uncover correct answer.

The Environmental Management System (EMS) is a systematic approach for ensuring compliance with environmental requirements and protection of the environment.	T	CORRECT
	OR	INCORRECT
ISMS Guiding Principles include Line Management Responsibility for Safety and Environmental Requirements, Worker involvement, and Senior Management Involvement.	T	CORRECT
	OR	INCORRECT
Establish Environment, Safety and Health Policy and Perform Work within controls are both ISMS Core Functions.	T	CORRECT
	OR	INCORRECT
DOE VPPTenets include Employee Involvement, Safety and Health Training and Education, Management Leadership, Work-Site Analysis, Hazard Prevention and Control.	T	CORRECT
	OR	INCORRECT

If you get any wrong, write the complete correct statement on the back. Turn in to the Project Safety Representative. Earn and successfully complete five VPP/ISMS lotto cards for an additional safety incentive.

Involvement Activities

- Create a Safety Meeting Topic...



Safety Communications

- Company Newsletters
 - Weekly Safety Topics,
 - Injury/illness Updates
 - Rude Awakenings
 - Close Call/Near Miss Communication
 - Lessons Learned
- Weekly Safety Report
- S&H Web Sites
- Employee (Craft) Safety Newsletters



The Next Step in Safety and Health



S&H Program Involvement

Safety System	Description, Quarterly Reports, Annual Assessments-ownership
VPP	VPP Annual Report, VPP Assessment, VPP Mentoring-part of the process
Case Management/ Recordkeeping	Injury Illness Review-Supervision, employee, and management involvement. Real-time notifications of incidents
Safety Campaigns	Safety Campaigns Initiatives and Procedures Development, Spot Awards, Milestone Celebrations, Budgets
Communications	Newsletters, Incident Notifications, Close Calls, Safety Alerts, Lessons Learned, and Hot Topics, Employee Newsletters

River Corridor Closure Project

Cast Your Vote

Choose Safety!

90 Day Safety Challenge
Zero Recordable Injuries
September 1 through November 29

VOTE For Safety...
Everyday!

Working Together
Toward Star Status

River Corridor Closure HAMTC

The Next Step in Safety and Health

S&H Program Involvement

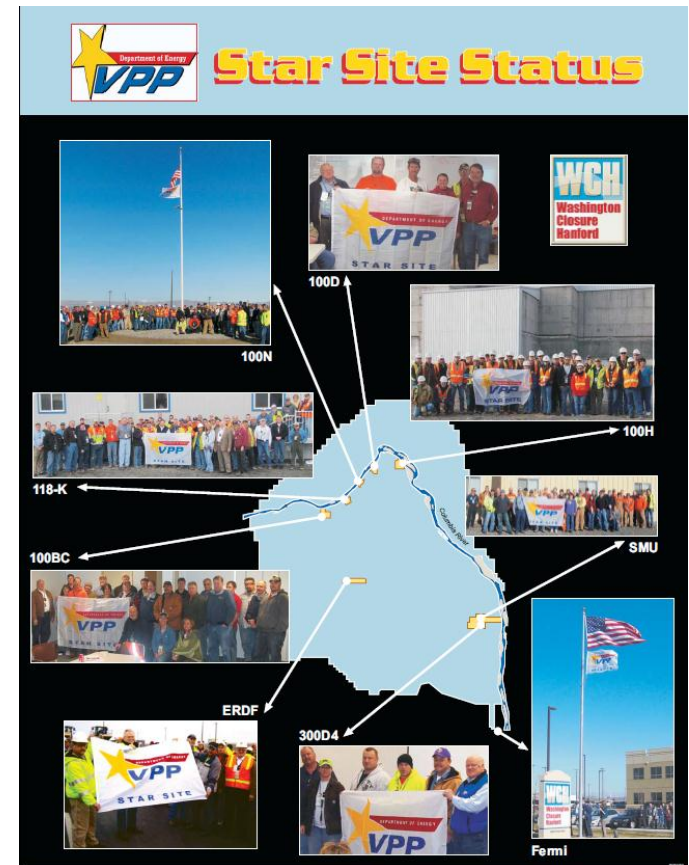
- Special Safety Initiatives

Project Safety Training	STS, Company/OSHA Training/Off-Site Vendors for employees
Safety Expo/Fest	Involve the community
Systematic S&H Site Wide Program Review	Revise/Update/Accept current procedures with new/emerging site and WCH requirements- get workers involved in the planning portion
Coaching and Mentoring	Increase knowledge and involvement ~ Learn as we mentor, SGE program



Value the Employees

- Celebrate Successes-little things go a long way-spot awards/Positive Recognition
- Flow Down/Communicate Safety and Health Improvement Plan-Allow employees to develop goals to support the mission
- 90 Day-Milestone Celebrations-recognize the employee contributions
- Involve the employees in the milestones/achievements for buy-in



The Next Step in Safety and Health

Celebrate Safety Success

One Team for Safe, Visible Cleanup of the River Corridor



Safety Successes

- ✓ VPP Star of Excellence and Contractor Champion's Award
- ✓ FY'11-Lowest safety rates since contract inception
- ✓ Surpassed 6 million safe work hours



One Team... Many Successes!

- ✓ Completed safe removal of the 309 Building dome
- ✓ Set a record for disposal of 2.3 Million tons of waste at ERDF
- ✓ Completed nearly all cleanup work at 100-F Area waste sites
- ✓ Remediated 230 of 553 hazardous waste sites and burial grounds
- ✓ Removed 30 miles of railroad track and nearly 70,000 railroad ties
- ✓ Completed nonintrusive characterization of the 618-11 Burial Ground
- ✓ Eliminated the disposal of nearly 212,000 tons of concrete rubble at ERDF
- ✓ Completed safe demolition of the 337 Building and the 309 building stack
- ✓ Completed a 630-ton scrap metal recycling campaign at the 100/BC Area
- ✓ Began excavation of the hazardous waste trenches at the 618-10 Burial Ground
- ✓ Completed orphan site walk-down evaluations (527 miles) of Segments 4 and 5
- ✓ Completed placement of the N Reactor Heat Exchanger Facility in interim safe storage
- ✓ Awarded more than \$170 Million (nearly 91%) in subcontracts to small businesses
- ✓ Completed a \$100 Million expansion and upgrade of ERDF without a lost work day injury
- ✓ Surpassed the 8 million safe mile mark for truck drivers working on the River Corridor Closure Project
- ✓ Completed cleanup of six waste silos containing highly radioactive debris at the 118-K-1 Burial Ground
- ✓ Completed cleanup of miscellaneous debris in Segments 1 and 2 and prepared final turnover documents

E11088



The Next Step in Safety and Health

Questions?



The Next Step in Safety and Health