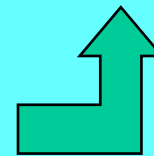
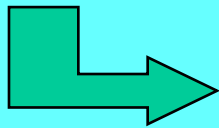


Why Island Watersheds Are Different

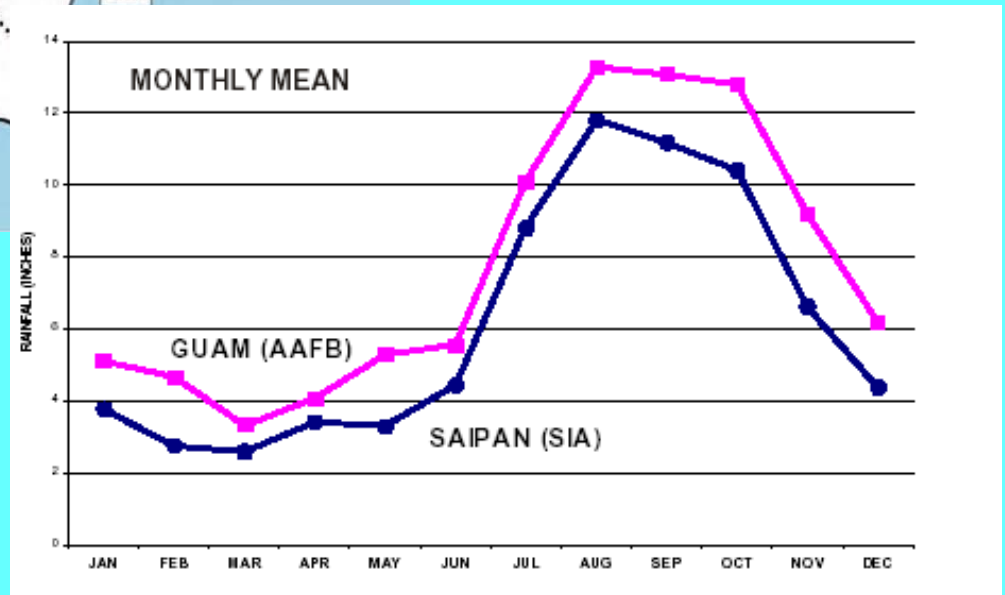
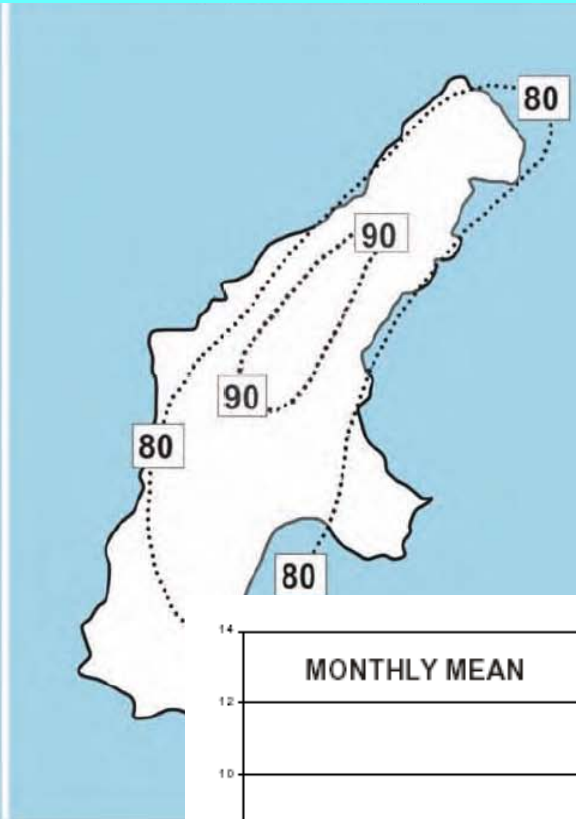
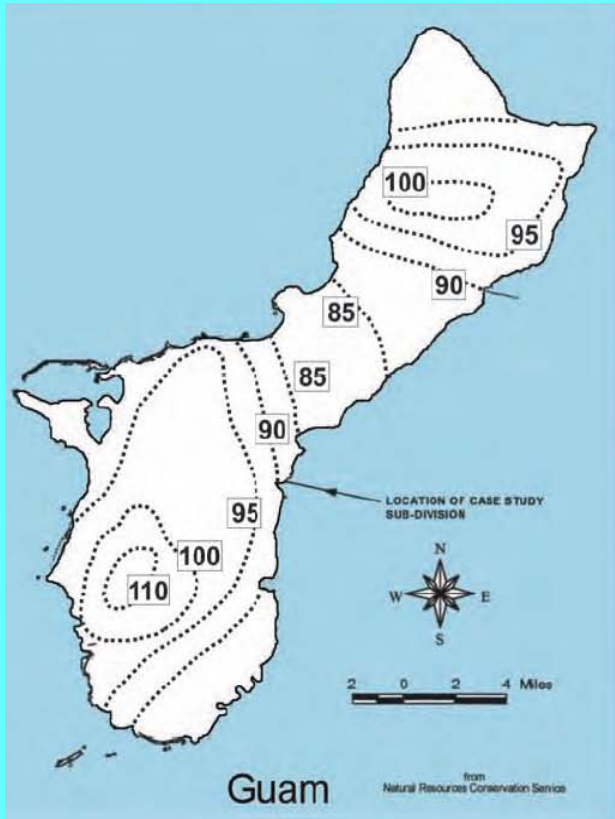
D. Hirschman
Center for Watershed
Protection



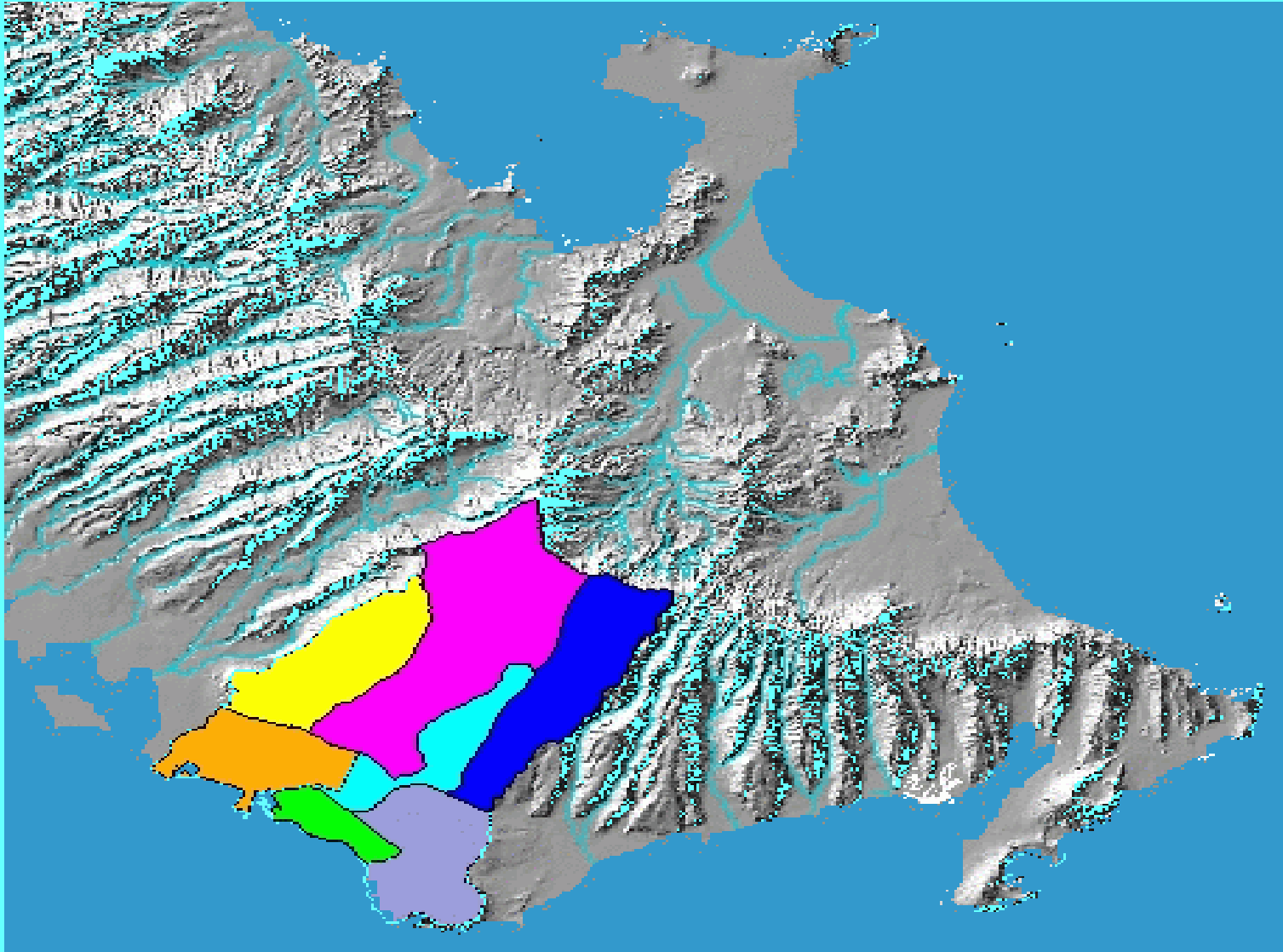
The Link: Coral Reefs & Land Pollution



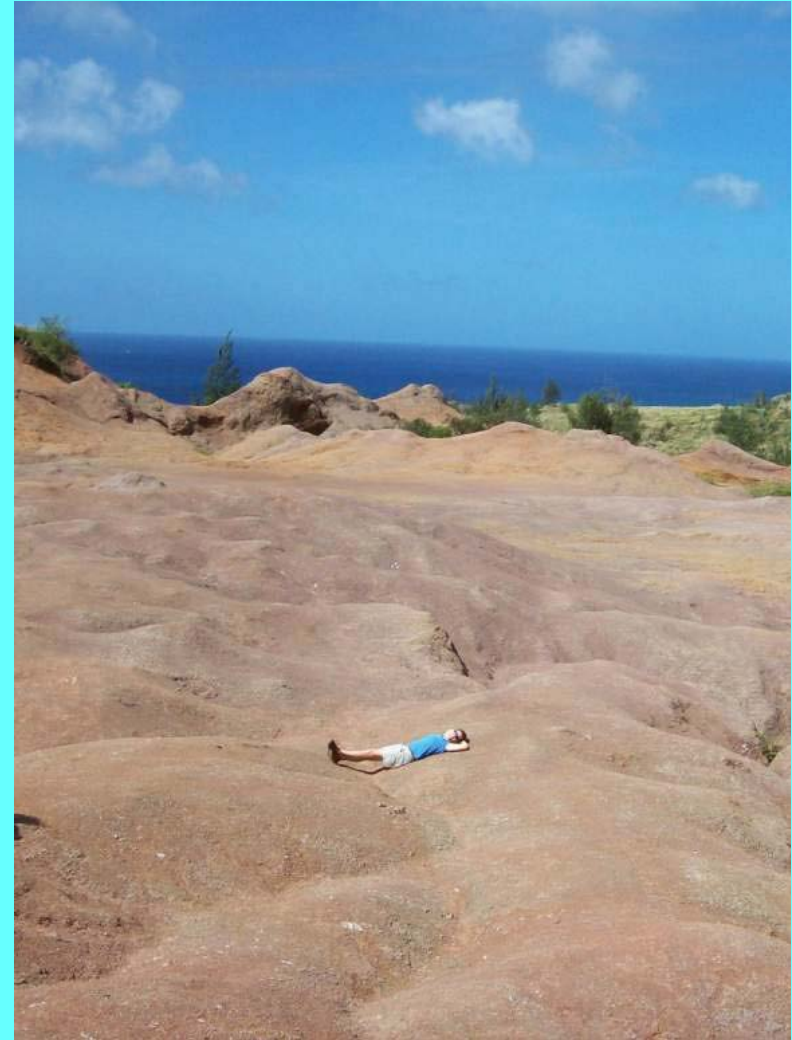
Rainfall



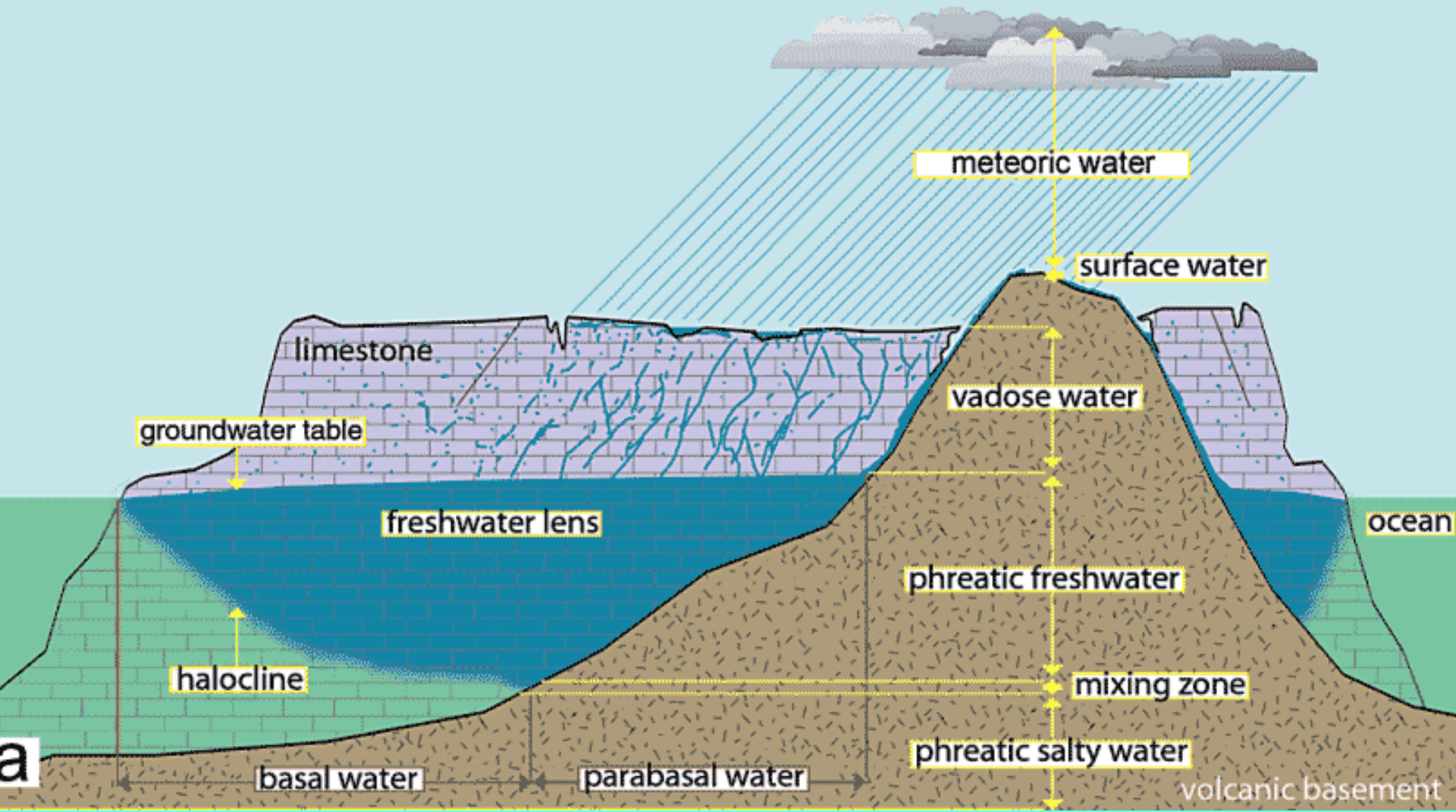
Terrain/Watersheds



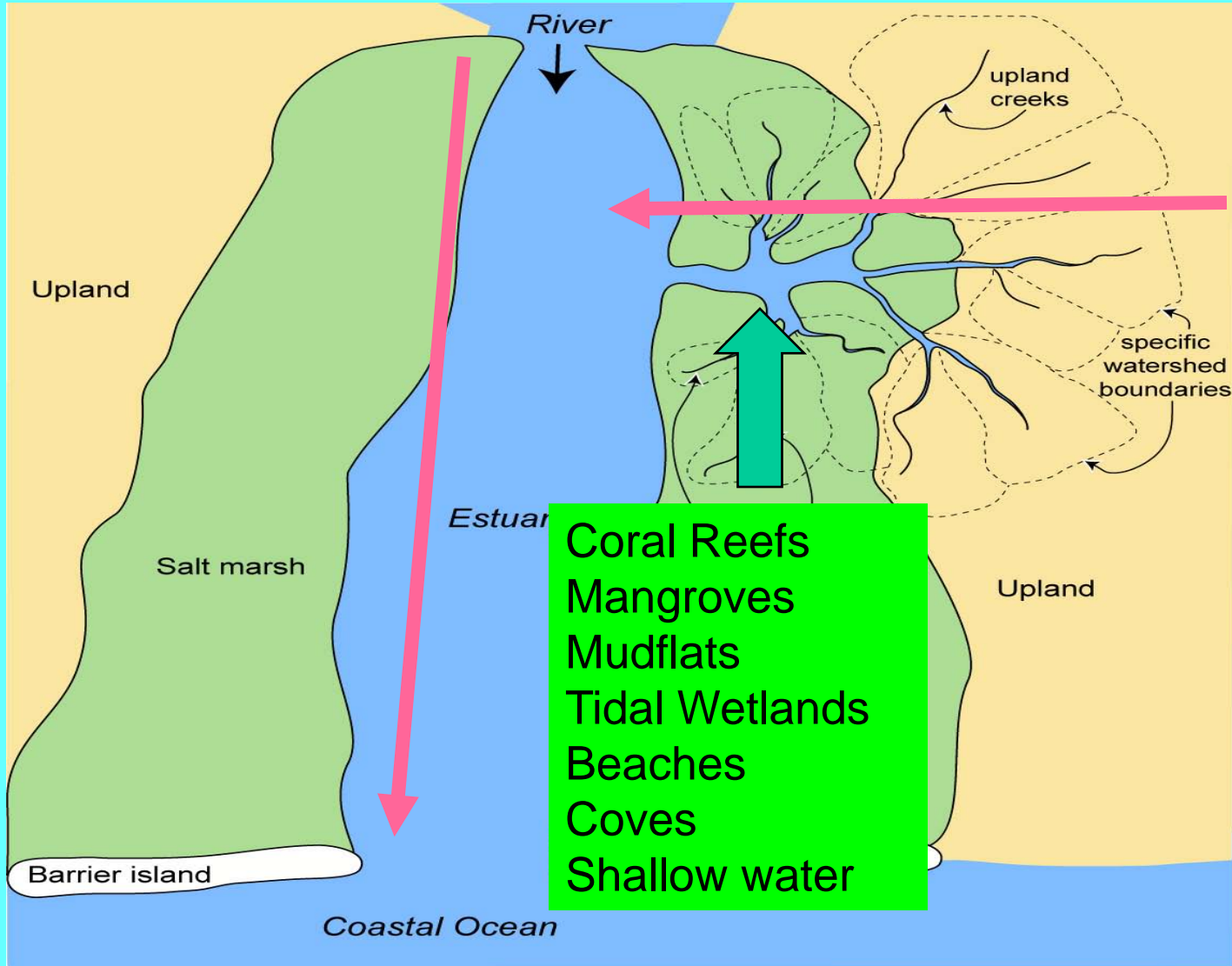
Land Cover/Erosion



Groundwater/Geology



Sensitive Near-shore Ecosystems



Program Staff/Inspectors



The Future?



If we mess it up, where will we go?

