

GROUNDINGS ON CORAL REEFS

BEST PRACTICES FOR RESPONSE AND PREVENTATIVE MEASURES



Patrick T. Keane
Seventh Coast Guard District
Miami, FL

FOUNDINGS ON CORAL REEFS

Historical Background

***Best Practices – Unified Command,
Salvage Plans***

Prevention Practices

HISTORICAL BACKGROUND

M/V FIRAT

M/V HIND

M/V FEDERALES PESCADORES

M/V FORTNA REEFER

M/V CLIPPER LASCO

M/V FIRAT

Grounded off of Ft
Lauderdale, FL
November 1994.



M/V FORTUNA REEFER

Grounded off of Mona
Island, Puerto Rico in
July 1997



M/V HIND

Grounded off of
Fort Lauderdale,
FL in 1998



M/V MARGARA

Grounded off of
Tallaboa, P.R. in
April 2006



M/V CLIPPER LASCO

Grounded off of Ft
Lauderdale, FL
September 2006



M/V VAGABOND

Grounded off of
British Virgin
Islands

October 2006



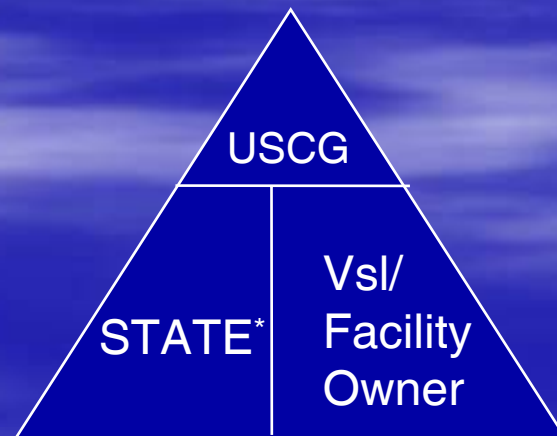
Best Practices

Unified Command/
Incident Command System

Salvage Plans

Unified Command Inclusion

- Jurisdictional Authority
- Impacts Organization's AOR
- Specifically responsible
- Resources



*This usually includes local authorities as well.

Unified Command

Command Staff



Liaison Officer

Safety Officer

Public Information Officer

Intelligence Officer

General Staff



Operations Section Chief

Planning Section Chief

Logistics Section Chief

Finance/Admin Section Chief

Staging Area Manager

Air Operations Branch Director

Air Support Group Supvrs

Air Tactical Group Supvrs

Branch Directors

Division Supervisors

Group Supervisors

Resources Unit Leader

Situation Unit Leader

Documentation Unit Leader

Demobilization Unit Leader

Environmental Unit Leader

Technical Specialists*

Service Branch Director

Communications Unit Leader

Medical Unit Leader

Food Unit Leader

Support Branch Director

Supply Unit Leader

Facilities Unit Leader

Time Unit Leader

Procurement Unit Leader

Compensation/Claims Unit Leader

Cost Unit Leader

Ground Support Unit Leader

Vessel Support Unit Leader

Best Practices

Use of ICS throughout process allows for salvage plan to incorporate input from all stakeholders.

USCG

State representative

Responsible Party

Resource Trustees

Salvage Plans

More than vessel and cargo salvage.

Includes Best Practices to reduce environmental harm

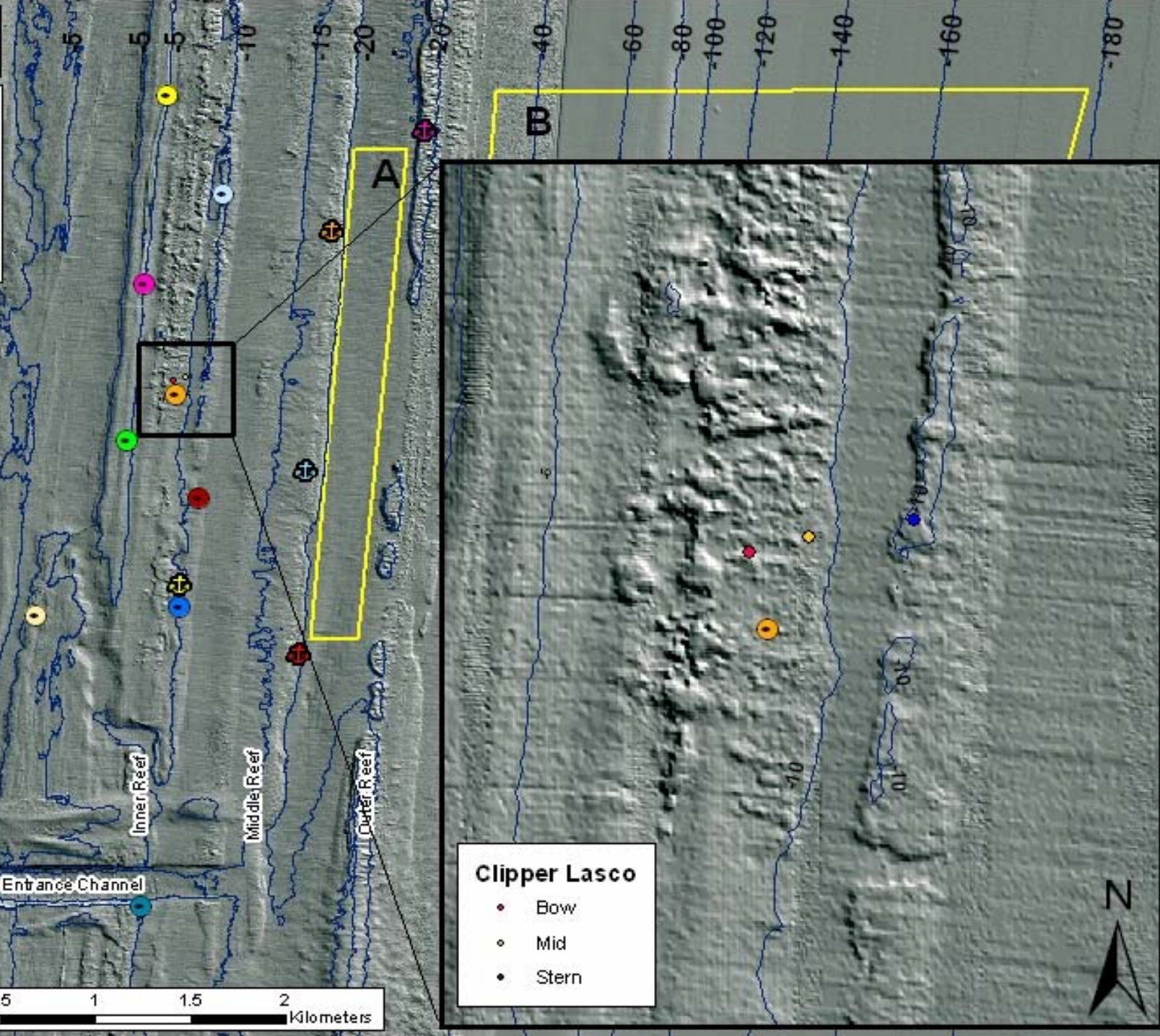
Including, but not limited to:

Salvage Plans

Non-sinking (floating) tow lines.

Careful placement of anchors, if necessary

Use of bathymetry for sea bottom contours.



Salvage Plans

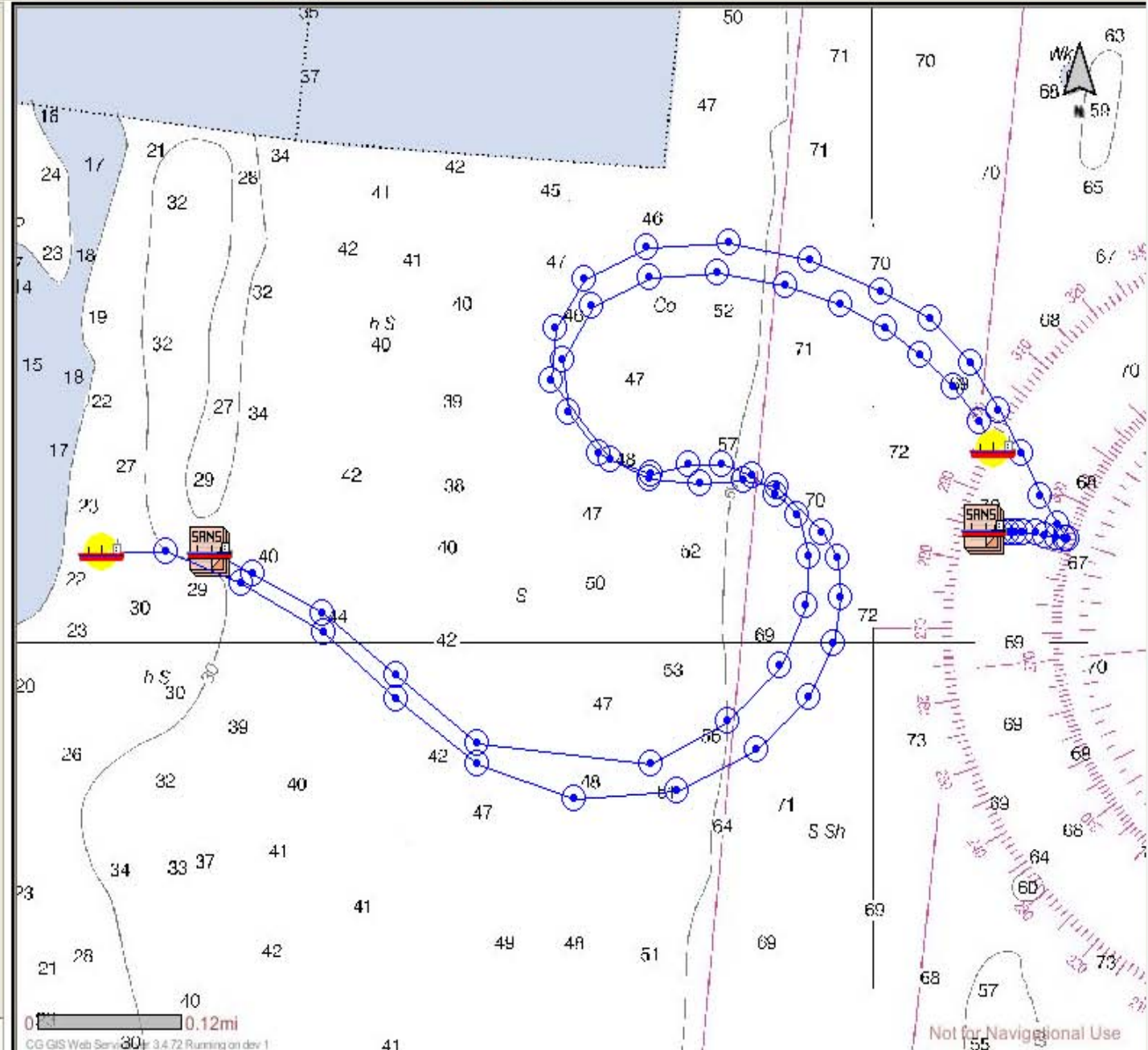
Mark the exit path

Use of temporary buoys

Use of GIS plots

MICE Interface

- NAIS Vessel Tracks
 - <Create Custom Track>
 - Preconfigured Tracks
- Vessel Search
 - clipper lasco
 - CLIPPER LASCO
 - CLIPPER LASCO Track
 - Miss ann
 - MISS ANN
 - MISS ANN Track



Salvage Plans

Ballast water treatment

Dive Surveys

Prevention Practices

Use of RACONs

Move vessels from anchorages during periods of heavy weather

Address Anchorages

Location

Size

Vessel draft, length, or gross ton restrictions

QUESTIONS ?