

Transmission of material in this release is embargoed until
8:30 a.m. (EDT) Thursday, October 11, 2012

USDL-12-2031

Technical information: (202) 691-7101 • MXPinfo@bls.gov • www.bls.gov/mxp
Media contact: (202) 691-5902 • PressOffice@bls.gov

U.S. IMPORT AND EXPORT PRICE INDEXES – SEPTEMBER 2012

U.S. import prices advanced 1.1 percent for the second consecutive month in September, the U.S. Bureau of Labor Statistics reported today, after falling the previous four months. The increase in each of the past two months was led by rising fuel prices. The price index for U.S. exports rose 0.8 percent in September following a 1.0 percent advance in August.

Chart 1. One-month percent change in the Import Price Index: September 2011 – September 2012

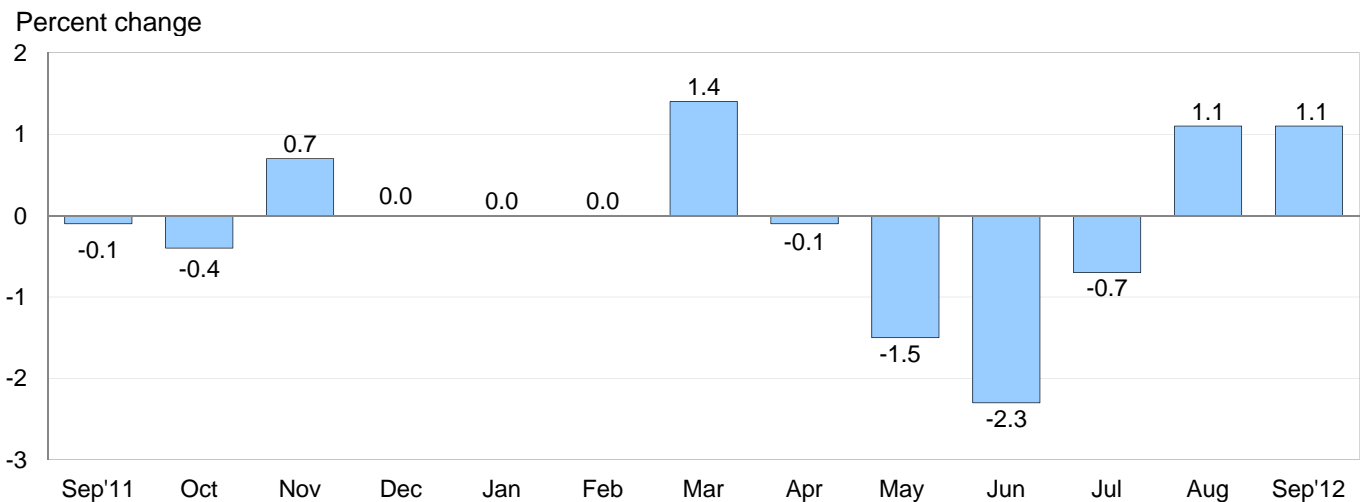
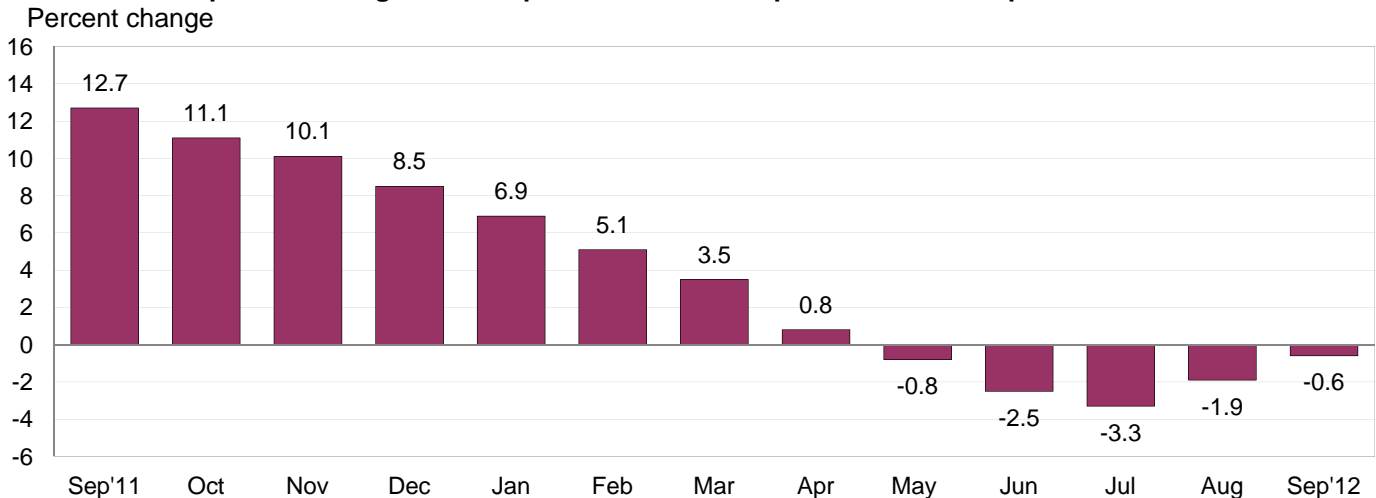


Chart 2. 12-month percent change in the Import Price Index: September 2011 – September 2012



All Imports: Import prices rose 1.1 percent in September following a 1.1 percent advance the previous month. Those were the first monthly increases for the index since a 1.4 percent rise in March. Higher fuel prices were the largest contributor to the September advance in overall import prices, although nonfuel prices increased as well. Despite the recent advances, import prices declined 0.6 percent over the past 12 months, the fifth consecutive month of declining year-over-year changes.

Fuel Imports: The price index for import fuels increased 4.4 percent after rising 5.7 percent in August. The September rise in fuel prices was led by a 4.6 percent increase in petroleum prices. In contrast, natural gas prices fell 0.3 percent. For the year ended in September, import fuel prices decreased 1.3 percent as declining prices prior to the past two months more than offset the increases in August and September. The decrease in fuel prices for the September 2011-12 period was driven by a 32.0 percent drop in natural gas prices, although petroleum prices also fell, edging down 0.1 percent.

All Imports Excluding Fuel: Nonfuel import prices rose 0.2 percent in September, the first monthly advance for the index since a 0.2 percent rise in April, as higher food and finished goods prices more than offset declining prices for nonfuel industrial supplies and materials. The price index for nonfuel imports declined 0.5 percent for the year ended in September.

Table A. Percent changes

Month	IMPORTS			EXPORTS		
	All imports	Fuel imports	Nonfuel imports	All exports	Agricultural exports	Non-agricultural exports
2011						
September.....	-0.1	-1.0	0.2	0.5	1.9	0.3
October.....	-0.4	-0.6	-0.2	-2.0	-6.5	-1.4
November.....	0.7	3.4	-0.2	0.1	1.7	-0.2
December.....	0.0	-0.4	0.1	-0.5	-2.3	-0.2
2012						
January.....	0.0	-0.2	0.2	0.3	1.1	0.2
February.....	0.0	-0.1	0.0	0.5	-0.4	0.6
March.....	1.4	4.4	0.4	0.8	2.4	0.5
April.....	-0.1	-0.9	0.2	0.4	2.0	0.2
May.....	-1.5	-5.6	-0.1	-0.5	0.5	-0.6
June.....	-2.3	-8.5 ^r	-0.3	-1.7	-3.5	-1.5
July.....	-0.7	-2.0 ^r	-0.4	0.4	6.0 ^r	-0.2 ^r
August.....	1.1 ^r	5.7 ^r	-0.2	1.0 ^r	5.2 ^r	0.4
September.....	1.1	4.4	0.2	0.8	1.1	0.7
Sept. 2010 to 2011.....	12.7	40.9	5.4	9.4	22.7	7.9
Sept. 2011 to 2012.....	-0.6	-1.3	-0.5	-0.5	6.7	-1.5

r Revised

Chart 3. One-month percent change in the Export Price Index: September 2011 – September 2012

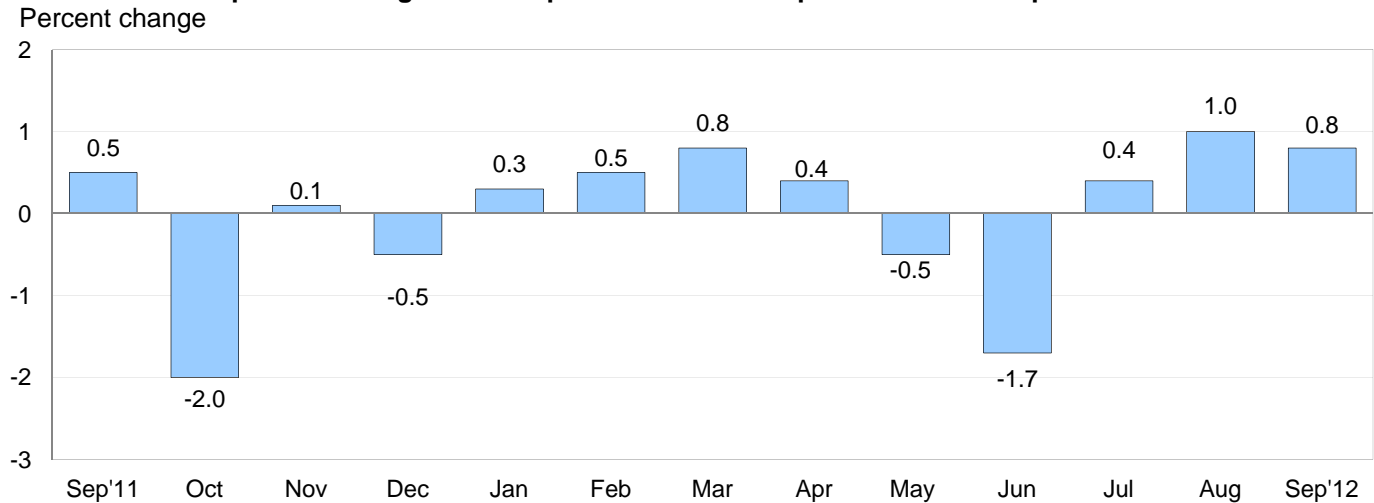
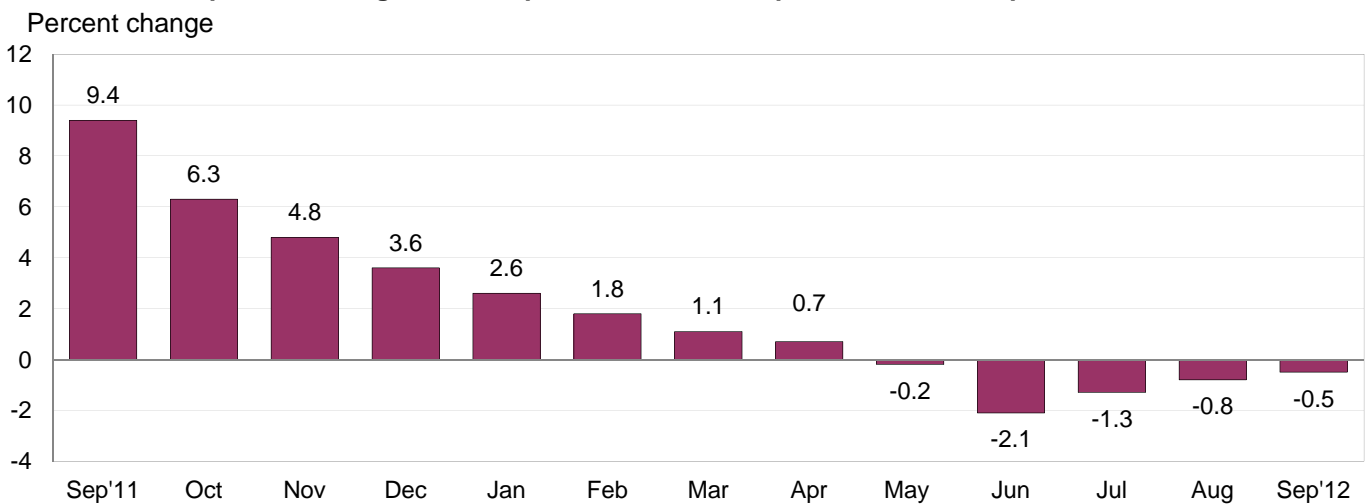


Chart 4. 12-month percent change in the Export Price Index: September 2011 – September 2012



All Exports: Prices for overall exports increased for the third consecutive month in September, rising 0.8 percent following advances of 1.0 percent in August and 0.4 percent in July. Rising prices for both agricultural and nonagricultural prices contributed to the September advance. Despite rising 2.2 percent over the past three months, export prices fell 0.5 percent between September 2011 and September 2012.

Agricultural Exports: The price index for agricultural exports increased 1.1 percent in September after rising 5.2 percent and 6.0 percent the previous two months. The 12.7 percent increase for the third quarter of 2012 was the largest quarterly advance since agricultural prices rose 12.7 percent during the fourth quarter of 2010. The September advance was led by a 4.6 percent increase in soybean prices. Prices for export agriculture rose 6.7 percent over the past year, driven by a 24.0 percent jump in prices for soybeans.

All Exports Excluding Agriculture: Nonagricultural prices advanced 0.7 percent in September after a 0.4 percent increase the previous month. Higher prices for both nonagricultural industrial supplies and materials and most of the major finished goods categories contributed to the overall increase in nonagricultural export prices in September. Prices for nonagricultural exports, however, fell 1.5 percent for the September 2011-12 period.

SELECTED SEPTEMBER HIGHLIGHTS

Import Prices

Imports by Locality of Origin: Import prices from China edged down 0.1 percent in September, led by a 0.4 percent drop in the price index for computer and electronics manufacturing. Despite not recording a monthly advance since ticking up 0.1 percent in February, import prices from China rose 0.4 percent over the past year. The price indexes for imports from Canada and Mexico were each driven upward in September by higher fuel prices, rising 1.5 percent and 1.3 percent, respectively. Prices for imports from Japan also rose in September, advancing 0.2 percent. In contrast, import prices from the European Union edged down 0.1 percent.

Nonfuel Industrial Supplies and Materials: Nonfuel industrial supplies and materials prices declined 0.2 percent in September following a 0.3 percent decrease the previous month. The September decline was led by lower prices for industrial agricultural products which more than offset rising prices for gold and other precious metals.

Finished Goods: Prices for capital goods and automotive vehicles rose in September, advancing 0.2 percent and 0.3 percent, respectively. The increase in capital goods prices followed a 0.1 percent decline in August, and was driven by a 1.0 percent rise in computer prices. The advance in the prices for automotive vehicles was led by a 1.2 percent rise in parts prices. Consumer goods prices remained unchanged in September.

Foods, Feeds, and Beverages: Foods, feeds, and beverages prices rose 1.7 percent in September after falling 0.8 percent in August. An 18.9 percent advance in import vegetable prices was the largest contributor to the overall increase in prices.

Transportation Services: Import air passenger fares decreased 1.6 percent in September following declines of 5.5 percent in August and 3.2 percent in July. A 5.4 percent decrease in Asian fares and a 9.1 percent drop in Latin American/Caribbean fares drove the September decline. Lower European fares had been the primary factor for decreasing import air passenger fares in August and July. Import air freight prices increased 0.3 percent in September.

Export Prices

Nonagricultural Industrial Supplies and Materials: Prices for nonagricultural supplies and materials increased 1.8 percent in September after rising 1.3 percent in August. Both advances were driven by higher fuel prices, although nonferrous metal prices and prices for chemicals each rose in September as well.

Finished Goods: Finished goods prices increased overall in September. Prices for consumer goods advanced 0.2 percent, led by rising prices for medicinal, dental, and pharmaceutical prices. Higher parts prices drove the price index for automotive vehicles up 0.3 percent. However, capital goods prices were unchanged in September.

Transportation Services: Export air passenger prices fell 11.0 percent in September. A 25.9 percent drop in Asian fares and a 10.0 percent decline in European fares each contributed to the decline. In contrast, the price index for export air freight increased 2.7 percent in September.

Import and Export Price Index data for October 2012 are scheduled for release on Friday, November 9, 2012 at 8:30 a.m. (EDT).

Table 1. U.S. import price indexes and percent changes for selected categories of goods: September 2011 to September 2012

[2000=100, unless otherwise noted]

Description	End Use	Relative importance Aug. 2012 ¹	Index		Percent change				
			Aug. 2012	Sept. 2012	Annual	Monthly			
					Sept. 2011 to Sept. 2012	May 2012 to June 2012	June 2012 to July 2012	July 2012 to Aug. 2012	Aug. 2012 to Sept. 2012
All commodities.....		100.000	139.2	140.8	-0.6	-2.3	-0.7	1.1	1.1
All imports excluding food and fuels (Dec. 2010=100).....		71.914	103.1	103.2	-0.4	-0.3	-0.4	-0.2	0.1
All imports excluding petroleum.....		77.951	115.7	115.9	-0.9	-0.3	-0.3	-0.2	0.2
All imports excluding fuels (Dec. 2001=100)..		76.976	120.1	120.3	-0.5	-0.3	-0.4	-0.2	0.2
Foods, feeds, & beverages.....	0	5.062	168.5	171.3	-1.9	-0.8	-1.2	-0.8	1.7
Agricultural foods, feeds & beverages, excluding distilled beverages.....	00	3.924	189.7	194.0	-1.3	-0.9	-1.1	-0.8	2.3
Nonagricultural foods (fish, distilled beverages).....	01	1.138	120.5	120.1	-4.2	-0.1	-1.3	-0.7	-0.3
Industrial supplies & materials.....	1	36.252	249.1	255.9	-2.5	-6.0	-1.9	3.4	2.7
Industrial supplies & materials excluding petroleum.....		14.204	163.1	162.8	-6.7	-1.1	-1.3	0.0	-0.2
Industrial supplies & materials excluding fuels (Dec. 2001=100).....		13.229	187.1	186.8	-5.0	-1.4	-1.8	-0.3	-0.2
Industrial supplies & materials, durable.....		7.740	174.1	174.8	-7.7	-1.8	-1.0	-0.5	0.4
Industrial supplies & materials nondurable excluding petroleum.....		5.489	149.9	148.7	-5.5	-0.2	-1.6	0.5	-0.8
Fuels & lubricants.....	10	23.023	329.1	343.6	-1.3	-8.5	-2.0	5.7	4.4
Petroleum & petroleum products.....	100	22.048	369.2	386.1	-0.1	-8.9	-2.3	5.8	4.6
Crude.....	10000	16.577	377.7	393.4	0.8	-9.0	-3.6	5.8	4.2
Fuels, n.e.s.-coals & gas.....	101	0.678	90.9	91.3	-28.7	5.6	10.2	3.8	0.4
Gas-natural.....	10110	0.573	76.9	76.7	-32.0	7.9	12.4	4.5	-0.3
Paper & paper base stocks.....	11	0.597	113.4	112.8	-3.7	-0.3	-0.2	-0.4	-0.5
Materials associated with nondurable supplies & materials.....	12	4.982	177.3	175.5	-0.2	-0.8	-3.4	0.2	-1.0
Selected building materials.....	13	1.054	139.8	141.3	7.7	1.2	0.5	0.7	1.1
Unfinished metals related to durable goods.....	14	3.540	255.6	256.9	-15.7	-3.6	-2.0	-1.0	0.5
Finished metals related to durable goods. .	15	1.549	161.2	161.6	-2.4	-1.0	0.1	-0.5	0.2
Nonmetals related to durable goods.....	16	1.507	114.2	114.0	-2.0	-0.5	-0.5	-0.2	-0.2
Capital goods.....	2	22.520	93.1	93.3	0.4	-0.1	0.0	-0.1	0.2
Electric generating equipment.....	20	2.925	119.1	119.2	0.7	-0.3	0.3	-0.1	0.1
Nonelectrical machinery.....	21	17.917	86.1	86.3	-0.1	-0.1	0.0	-0.1	0.2
Transportation equipment excluding motor vehicles (Dec. 2001=100).....	22	1.678	134.0	133.8	5.9	0.1	0.1	0.0	-0.1
Automotive vehicles, parts & engines.....	3	11.772	114.7	115.0	1.6	0.0	0.3	0.0	0.3
Consumer goods, excluding automotives..	4	24.393	107.2	107.2	0.6	-0.1	-0.1	-0.3	0.0
Nondurables, manufactured.....	40	11.749	114.6	114.5	1.5	-0.1	0.0	-0.2	-0.1
Durables, manufactured.....	41	11.364	99.4	99.6	-0.5	-0.1	-0.1	-0.2	0.2
Nonmanufactured consumer goods.....	42	1.279	115.4	115.5	0.5	-0.3	-0.8	-2.5	0.1

¹ Relative importance figures are based on 2010 trade values.

NOTES: Data may be revised in each of the three months after original publication.

Dash = Not available

Table 2. U.S. export price indexes and percent changes for selected categories of goods: September 2011 to September 2012

[2000=100, unless otherwise noted]

Description	End Use	Relative importance Aug. 2012 ¹	Index		Percent change				
			Aug. 2012	Sept. 2012	Annual	Monthly			
					Sept. 2011 to Sept. 2012	May 2012 to June 2012	June 2012 to July 2012	July 2012 to Aug. 2012	Aug. 2012 to Sept. 2012
All commodities.....		100.000	133.5	134.6	-0.5	-1.7	0.4	1.0	0.8
Agricultural commodities.....		11.968	228.0	230.4	6.7	-3.5	6.0	5.2	1.1
All exports excluding food and fuels (Dec. 2010=100).....		80.498	102.2	102.6	-1.2	-0.8	-0.4	0.1	0.4
Nonagricultural commodities.....		88.032	126.7	127.6	-1.5	-1.5	-0.2	0.4	0.7
Foods, feeds, & beverages.....	0	11.087	230.1	232.2	8.6	-3.0	6.5	5.0	0.9
Agricultural foods, feeds & beverages, excluding distilled beverages.....	00	10.359	234.3	236.7	8.9	-3.3	7.0	5.3	1.0
Nonagricultural foods (fish, distilled beverages).....	01	0.728	192.7	192.3	4.2	1.0	-0.2	1.5	-0.2
Industrial supplies & materials.....	1	33.579	180.2	183.5	-4.8	-3.9	-0.4	1.4	1.8
Industrial supplies & materials, durable.....		11.904	181.4	183.3	-6.8	-2.5	-0.7	-0.5	1.0
Industrial supplies & materials, nondurable.....		21.676	180.4	184.4	-3.8	-4.8	-0.2	2.6	2.2
Agricultural industrial supplies & materials..	10	1.609	197.9	200.7	-5.6	-4.6	-0.2	4.8	1.4
Nonagricultural industrial supplies & materials.....		31.970	179.8	183.1	-4.8	-3.9	-0.4	1.3	1.8
Fuels & lubricants.....	11	8.415	261.6	273.0	-4.1	-8.7	0.6	4.7	4.4
Nonagricultural supplies & materials excluding fuels & building materials.....	12	22.607	169.8	171.5	-5.4	-2.3	-0.8	0.1	1.0
Selected building materials.....	13	0.948	118.7	118.9	2.7	0.7	0.3	0.2	0.2
Capital goods.....	2	34.424	105.6	105.6	1.0	-0.2	-0.2	0.0	0.0
Electrical generating equipment.....	20	3.533	113.6	113.9	-0.2	0.2	-0.7	0.1	0.3
Nonelectrical machinery.....	21	24.923	94.8	94.8	0.6	-0.2	-0.1	-0.1	0.0
Transportation equipment excluding motor vehicles (Dec. 2001=100).....	22	5.968	149.2	149.2	3.0	0.0	0.1	0.0	0.0
Automotive vehicles, parts & engines.....	3	8.209	112.9	113.2	1.6	-0.1	0.2	-0.2	0.3
Consumer goods, excluding automotives..	4	12.701	116.4	116.6	-0.7	0.1	-0.5	0.0	0.2
Nondurables, manufactured.....	40	5.910	114.9	115.3	0.5	0.0	-0.1	0.1	0.3
Durables, manufactured.....	41	5.367	114.6	114.6	0.9	-0.2	-0.3	0.0	0.0

¹ Relative importance figures are based on 2010 trade values.

NOTES: Data may be revised in each of the three months after original publication.

Dash = Not available

Table 3. U.S. import price indexes and percent changes for selected categories of goods: September 2011 to September 2012

[December 2005=100, unless otherwise noted]

Description	NAICS	Relative importance Aug. 2012 ¹	Index		Percent change				
			Aug. 2012	Sept. 2012	Annual	Monthly			
					Sept. 2011 to Sept. 2012	May 2012 to June 2012	June 2012 to July 2012	July 2012 to Aug. 2012	Aug. 2012 to Sept. 2012
Nonmanufactured articles.....		19.633	160.1	166.8	-1.7	-7.8	-3.0	4.8	4.2
Agriculture, forestry, fishing and hunting...	11	1.804	166.8	172.7	-3.6	-1.9	-1.5	-1.4	3.5
Crop production.....	111	1.289	174.3	182.1	-1.8	-2.4	-1.5	-0.7	4.5
Mining.....	21	17.829	159.1	165.8	-1.5	-8.5	-3.1	5.6	4.2
Mining (except oil and gas) (Dec. 2006=100).....	212	0.331	143.5	145.0	-7.1	-1.0	-0.3	0.0	1.0
Manufactured articles.....		79.910	117.4	117.9	-0.4	-0.8	-0.2	0.2	0.4
Manufactured goods, part 1.....	31	10.934	124.2	123.6	0.2	-0.2	-0.9	-0.2	-0.5
Food manufacturing.....	311	3.028	157.3	155.4	-0.9	-0.5	-2.9	-0.6	-1.2
Beverage and tobacco product manufacturing.....	312	0.850	111.3	111.7	0.0	-0.1	-0.4	0.0	0.4
Textile mills (Dec. 2011=100).....	313	0.408	101.9	102.5	-	-0.3	0.2	0.2	0.6
Textile product mills.....	314	0.879	115.8	115.7	-2.4	-0.1	-0.2	0.0	-0.1
Apparel manufacturing.....	315	4.118	111.5	111.0	-0.2	-0.1	0.0	-0.4	-0.4
Leather and allied product manufacturing. . .	316	1.649	119.5	119.5	4.4	0.1	-0.1	0.1	0.0
Manufactured goods, part 2.....	32	18.140	138.8	140.7	0.4	-2.4	0.0	1.7	1.4
Wood product manufacturing.....	321	0.643	118.7	120.1	9.9	1.5	1.0	1.0	1.2
Paper manufacturing.....	322	1.100	110.8	110.6	-1.5	-0.2	0.0	-0.4	-0.2
Petroleum and coal products manufacturing.....	324	4.724	171.5	180.1	-0.8	-8.0	2.7	6.1	5.0
Chemical manufacturing.....	325	8.822	134.2	134.2	0.4	-0.8	-1.3	0.4	0.0
Plastics and rubber products manufacturing.....	326	1.914	127.3	127.5	1.8	-0.2	-0.2	-0.1	0.2
Nonmetallic mineral product manufacturing.....	327	0.846	130.1	130.3	1.8	0.0	0.2	0.0	0.2
Manufactured goods, part 3.....	33	50.835	109.4	109.6	-0.9	-0.3	-0.1	-0.3	0.2
Primary metal manufacturing.....	331	4.124	168.8	169.5	-13.7	-3.3	-1.8	-1.1	0.4
Fabricated metal product manufacturing. . .	332	2.579	129.6	130.0	0.6	-0.2	0.3	-0.2	0.3
Machinery manufacturing.....	333	5.684	120.8	121.1	1.4	-0.2	-0.2	-0.1	0.2
Computer and electronic product manufacturing.....	334	15.615	82.2	82.3	-1.0	-0.1	0.1	-0.1	0.1
Electrical equipment, appliance, and component manufacturing.....	335	3.888	118.5	118.5	1.8	-0.1	0.2	0.0	0.0
Transportation equipment manufacturing. . .	336	12.449	111.9	112.1	2.1	0.0	0.3	0.1	0.2
Furniture and related product manufacturing.....	337	1.323	113.3	113.5	1.1	0.7	-0.4	-0.3	0.2
Miscellaneous manufacturing.....	339	5.174	121.1	121.1	-1.1	0.1	-0.1	-1.0	0.0

¹ Relative importance figures are based on 2010 trade values.

NOTES: Data may be revised in each of the three months after original publication.

Dash = Not available

Table 4. U.S. export price indexes and percent changes for selected categories of goods: September 2011 to September 2012

[December 2005=100, unless otherwise noted]

Description	NAICS	Relative importance Aug. 2012 ¹	Index		Percent change				
			Aug. 2012	Sept. 2012	Annual	Monthly			
					Sept. 2011 to Sept. 2012	May 2012 to June 2012	June 2012 to July 2012	July 2012 to Aug. 2012	Aug. 2012 to Sept. 2012
Nonmanufactured articles.....		8.989	179.6	180.3	-1.1	-5.6	8.0	5.0	0.4
Agriculture, forestry, fishing and hunting...	11	7.088	222.3	224.7	7.8	-5.8	10.1	6.0	1.1
Crop production.....	111	6.606	230.6	234.2	8.3	-6.3	11.0	5.5	1.6
Mining.....	21	1.901	96.3	94.3	-24.8	-4.8	1.0	1.5	-2.1
Mining (except oil and gas).....	212	1.346	118.9	117.2	-20.6	-2.0	-0.3	-0.2	-1.4
Manufactured articles.....		88.151	120.4	121.4	0.1	-1.2	-0.2	0.5	0.8
Manufactured goods, part 1.....	31	7.283	149.8	150.9	3.3	-0.3	-0.1	2.1	0.7
Food manufacturing.....	311	5.091	171.8	173.1	4.6	-0.4	-0.1	2.4	0.8
Beverage and tobacco product manufacturing.....	312	0.598	126.2	129.2	11.7	0.3	1.0	4.1	2.4
Apparel manufacturing.....	315	0.424	121.7	121.7	6.5	1.5	0.0	0.0	0.0
Manufactured goods, part 2.....	32	26.213	133.0	135.5	-0.4	-3.2	-0.6	1.8	1.9
Wood product manufacturing.....	321	0.402	114.2	114.2	-0.5	-0.4	-0.4	0.5	0.0
Paper manufacturing.....	322	1.840	119.7	119.8	-3.9	0.5	0.4	0.3	0.1
Petroleum and coal products manufacturing.....	324	6.218	167.8	177.7	1.8	-9.1	0.4	5.5	5.9
Chemical manufacturing.....	325	14.824	130.0	131.0	-1.5	-1.7	-1.1	0.7	0.8
Plastics and rubber products manufacturing.....	326	2.177	117.3	119.1	3.4	0.0	-0.4	0.0	1.5
Nonmetallic mineral product manufacturing.....	327	0.751	111.5	111.3	0.4	0.5	-0.1	-0.4	-0.2
Manufactured goods, part 3.....	33	54.655	112.8	113.0	-0.2	-0.4	-0.2	-0.2	0.2
Primary metal manufacturing.....	331	4.614	165.5	168.6	-10.2	-3.0	-0.6	-1.4	1.9
Fabricated metal product manufacturing.	332	2.667	132.0	132.0	3.4	0.1	0.7	0.2	0.0
Machinery manufacturing.....	333	11.088	120.6	120.7	2.6	0.0	0.1	0.1	0.1
Computer and electronic product manufacturing.....	334	14.282	89.3	89.2	-0.3	-0.4	-0.3	-0.2	-0.1
Electrical equipment, appliance, and component manufacturing.....	335	3.201	112.2	112.6	-0.6	0.1	-0.6	0.1	0.4
Transportation equipment manufacturing....	336	13.387	116.8	117.0	2.1	-0.1	0.1	-0.1	0.2
Furniture and related product manufacturing (Dec. 2011=100).....	337	0.298	102.9	103.1	-	0.4	0.0	-0.1	0.2
Miscellaneous manufacturing.....	339	5.119	121.7	122.0	-2.1	0.2	-0.9	-0.1	0.2

1 Relative importance figures are based on 2010 trade values.

NOTES: Data may be revised in each of the three months after original publication.

Dash = Not available

Table 5. U.S. import price indexes and percent changes for selected categories of goods: September 2011 to September 2012

[2000=100, unless otherwise noted]

Description	Harmonized system	Relative importance Aug. 2012 ¹	Index		Percent change				
			Aug. 2012	Sept. 2012	Annual	Monthly			
					Sept. 2011 to Sept. 2012	May 2012 to June 2012	June 2012 to July 2012	July 2012 to Aug. 2012	Aug. 2012 to Sept. 2012
Live animals; animal products.....	I	1.134	160.1	161.4	-3.1	0.0	-1.2	-1.7	0.8
Meat and edible meat offal.....	02	0.277	218.5	220.3	5.3	0.8	1.2	0.9	0.8
Fish and crustaceans, molluscs and other aquatic invertebrates.....	03	0.583	114.0	113.0	-9.7	-0.5	-2.4	-1.6	-0.9
Vegetable products.....	II	1.684	211.4	214.7	0.7	-2.0	-3.4	-0.9	1.6
Edible vegetables, roots, and tubers.....	07	0.301	296.8	373.5	19.0	0.9	-6.1	-1.9	25.8
Edible fruit and nuts; peel of citrus fruit or melons.....	08	0.458	114.2	113.4	-8.2	-3.8	-0.8	-2.2	-0.7
Coffee, tea, mate and spices.....	09	0.419	270.3	260.0	-11.7	-1.8	2.2	-1.0	-3.8
Animal or vegetable fats and oils (Dec. 2009=100).....	III	0.247	124.8	127.2	-8.7	-4.7	-2.6	-2.0	1.9
Prepared foodstuffs, beverages, and tobacco.....	IV	2.398	156.8	157.4	-0.2	-0.2	-0.6	0.2	0.4
Cocoa and cocoa preparations (Dec. 2009=100).....	18	0.182	83.6	84.5	-14.4	-1.2	-4.8	3.9	1.1
Preparations of cereals, flour, starch or milk; bakers' wares (Dec. 2007=100).....	19	0.232	127.9	128.5	1.3	-0.2	1.2	0.2	0.5
Preparations of vegetables, fruit, nuts, or other parts of plants.....	20	0.348	170.1	171.0	7.1	-1.0	-0.2	-0.2	0.5
Beverages, spirits, and vinegar.....	22	0.802	121.5	121.9	-0.1	-0.2	-0.6	0.0	0.3
Mineral products.....	V	22.729	331.3	345.8	-1.1	-8.3	-2.0	5.6	4.4
Mineral fuels, oils and residuals, bituminous substances and mineral waxes.....	27	22.419	327.6	342.1	-1.0	-8.4	-2.0	5.6	4.4
Products of the chemical or allied industries.....	VI	8.392	150.2	150.3	1.7	-0.3	-0.7	0.3	0.1
Inorganic chemicals.....	28	0.995	395.1	397.7	5.4	3.6	1.8	1.2	0.7
Organic chemicals.....	29	2.476	139.0	138.4	0.1	-1.4	0.1	0.7	-0.4
Pharmaceutical products.....	30	3.055	116.9	117.0	4.6	-0.1	-0.4	0.0	0.1
Fertilizers (Dec. 2009=100).....	31	0.438	136.4	136.4	-9.5	-2.6	-12.6	0.1	0.0
Tanning extracts; dye, pigments, varnish, paints & putty (Dec. 2011=100).....	32	0.182	103.3	103.2	-	-0.8	-1.8	-0.2	-0.1
Essential oils and resinoids (Dec. 2001=100).....	33	0.418	124.5	123.5	-2.4	0.0	-0.3	0.0	-0.8
Miscellaneous chemical products.....	38	0.475	101.9	102.1	-4.4	-1.2	-0.3	-0.2	0.2
Plastics and articles thereof; rubber and articles thereof.....	VII	3.112	151.2	151.0	-1.4	-0.5	-1.0	0.0	-0.1
Plastics and articles thereof.....	39	1.888	142.5	142.8	0.4	-0.3	-1.1	0.1	0.2
Rubber and articles thereof.....	40	1.224	167.9	166.9	-4.0	-0.8	-0.8	-0.2	-0.6
Raw hides, skins, leather, furskins, travel goods, etc.....	VIII	0.594	126.3	126.3	3.4	0.2	-0.1	0.0	0.0
Articles of leather; travel goods, bags, etc. of various materials.....	42	0.546	127.1	127.1	3.8	0.2	-0.1	0.0	0.0
Wood, wood charcoal, cork, straw, basketware and wickerwork.....	IX	0.677	143.8	145.8	10.5	1.4	1.2	1.0	1.4
Woodpulp, recovered paper, and paper products.....	X	1.205	113.7	113.5	-1.0	-0.1	-0.1	-0.2	-0.2
Pulp wood, waste paper, and paperboard (Dec. 2011=100).....	47	0.184	101.9	99.8	-	0.4	-0.1	-1.9	-2.1
Paper and paperboard; articles of paper pulp, paper or paperboard.....	48	0.803	108.2	108.3	-0.5	-0.4	-0.1	0.1	0.1
Textile and textile articles.....	XI	5.259	114.9	114.6	-0.8	-0.2	0.0	-0.3	-0.3
Articles of apparel and clothing accessories, knitted or crocheted.....	61	2.036	105.7	104.9	-1.7	-0.2	0.3	-0.6	-0.8

See footnotes at end of table.

Table 5. U.S. import price indexes and percent changes for selected categories of goods: September 2011 to September 2012 — Continued
 [2000=100, unless otherwise noted]

Description	Harmonized system	Relative importance Aug. 2012 ¹	Index		Percent change				
			Aug. 2012	Sept. 2012	Annual	Monthly			
					Sept. 2011 to Sept. 2012	May 2012 to June 2012	June 2012 to July 2012	July 2012 to Aug. 2012	Aug. 2012 to Sept. 2012
Articles of apparel and clothing accessories, not knitted or crocheted.....	62	1.935	117.4	117.3	0.9	0.0	-0.3	-0.3	-0.1
Made-up or worn textile articles.....	63	0.636	108.4	108.8	-3.8	-0.1	-0.3	0.0	0.4
Headgear, umbrellas, artificial flowers, etc. . .	XII	1.353	119.0	119.1	4.6	0.0	0.2	0.1	0.1
Footwear and parts of such articles.....	64	1.150	118.0	118.0	4.3	0.0	0.2	0.1	0.0
Stone, plaster, cement, asbestos, ceramics, glass etc.....	XIII	0.766	132.1	132.5	2.1	0.2	0.1	-0.1	0.3
Articles of stone, plaster, cement, asbestos, or mica (Dec. 2001=100).....	68	0.247	125.7	126.6	3.7	0.6	0.3	-0.1	0.7
Ceramic products.....	69	0.230	142.1	142.1	0.7	0.0	0.0	0.0	0.0
Glass and glassware.....	70	0.290	126.8	127.1	1.8	-0.2	0.0	-0.2	0.2
Pearls, stones, precious metals, imitation jewelry, and coins.....	XIV	3.217	195.5	199.4	-7.2	-2.6	-0.2	-1.6	2.0
Base metals and articles of base metals.....	XV	4.820	185.1	183.9	-7.4	-1.6	-1.4	-0.5	-0.6
Iron and steel.....	72	1.087	231.8	227.2	-13.1	-2.4	-2.5	-1.7	-2.0
Articles of iron or steel.....	73	1.428	160.6	159.8	-0.7	-0.6	0.2	-0.3	-0.5
Copper and articles thereof.....	74	0.440	339.6	342.9	-13.3	-4.0	-4.2	1.5	1.0
Nickel and articles thereof (Dec. 2009=100)...	75	0.128	97.4	95.0	-24.9	-3.3	-2.3	-1.2	-2.5
Aluminum and articles thereof.....	76	0.684	133.4	132.6	-12.0	-2.1	-2.0	-1.1	-0.6
Tools, implements, cutlery, spoons and forks, of base metal; parts thereof.....	82	0.368	128.5	129.0	3.9	-0.2	0.1	0.2	0.4
Miscellaneous articles of base metal.....	83	0.417	136.0	136.1	3.4	0.3	0.0	0.4	0.1
Machinery, electrical equipment, TV image and sound recorders, parts, etc.....	XVI	24.999	85.6	85.8	0.1	-0.1	0.0	-0.1	0.2
Machinery and mechanical appliances; parts thereof.....	84	12.613	89.7	90.1	1.6	0.0	0.0	-0.1	0.4
Electrical machinery and equip, sound and TV recorders & reproducers, parts.....	85	12.386	81.7	81.8	-1.3	-0.2	0.0	-0.1	0.1
Vehicles, aircraft, vessels and associated transport equipment.....	XVII	10.386	116.2	116.3	1.3	0.0	0.3	0.0	0.1
Motor vehicles and their parts.....	87	9.575	115.3	115.4	1.2	-0.1	0.3	0.1	0.1
Aircraft, spacecraft, and parts thereof (Dec. 2002=100).....	88	0.716	118.7	118.2	2.0	0.2	0.4	0.0	-0.4
Optical, photo, measuring, medical & musical instruments; & timepieces.....	XVIII	3.237	103.9	104.0	-1.4	-0.1	0.2	-0.6	0.1
Optical, photographic, measuring and medical instruments.....	90	2.979	101.4	101.4	-1.6	-0.1	0.2	-0.6	0.0
Clocks and watches and parts thereof.....	91	0.197	129.9	129.8	0.2	-0.1	0.5	-0.1	-0.1
Miscellaneous manufactured articles.....	XX	3.736	112.5	112.5	1.4	0.4	-0.2	-0.1	0.0
Furniture & stuffed furnishings; lamps & lighting fittings, nesoi; prefab bldgs.....	94	1.991	116.2	116.4	1.5	0.4	-0.1	-0.2	0.2
Toys, games and sports equipment; parts and accessories thereof.....	95	1.539	105.0	104.8	1.3	0.1	-0.4	0.0	-0.2
Miscellaneous manufactured articles.....	96	0.206	136.6	136.7	2.5	2.8	-0.1	-0.1	0.1

¹ Relative importance figures are based on 2010 trade values.

NOTES: Data may be revised in each of the three months after original publication.

Dash = Not available

Table 6. U.S. export price indexes and percent changes for selected categories of goods: September 2011 to September 2012

[2000=100, unless otherwise noted]

Description	Harmoni- zied system	Relative importance Aug. 2012 ¹	Index		Percent change				
			Aug. 2012	Sept. 2012	Annual Sept. 2011 to Sept. 2012	Monthly			
						May 2012 to June 2012	June 2012 to July 2012	July 2012 to Aug. 2012	Aug. 2012 to Sept. 2012
Live animals; animal products.....	I	1.974	211.4	206.8	0.6	0.0	-0.9	5.2	-2.2
Meat & edible meat offal (Dec. 2006=100). . .	02	1.125	165.2	165.8	-1.1	-1.4	-1.3	1.1	0.4
Fish and crustaceans, molluscs and other aquatic invertebrates.....	03	0.435	211.5	210.2	5.6	0.7	-0.1	1.9	-0.6
Vegetable products.....	II	6.637	282.4	287.5	12.0	-5.3	11.1	5.3	1.8
Edible fruit and nuts; peel of citrus fruit or melons.....	08	0.828	132.9	136.7	11.6	1.8	-2.4	-2.4	2.9
Cereals.....	10	2.610	339.4	335.8	3.2	-5.8	17.4	9.4	-1.1
Oilseeds and misc. grains, seeds, fruits, plants, straw and fodder.....	12	2.590	321.4	335.4	23.4	-7.8	14.0	5.4	4.4
Animal or vegetable fats and oils (Dec. 2009=100).....	III	0.468	146.7	151.8	-5.9	-5.5	-0.9	-0.1	3.5
Prepared foodstuffs, beverages, and tobacco.....	IV	2.885	167.1	169.1	10.7	0.5	1.0	4.9	1.2
Preparations of vegetables, fruit, nuts or other parts of plants (Dec. 2009=100).....	20	0.326	112.3	112.5	3.0	-0.1	0.5	0.7	0.2
Beverages, spirits, and vinegar (Dec. 2008=100).....	22	0.401	109.7	109.7	3.8	0.0	-0.2	0.0	0.0
Residues and waste from the food industries; prepared animal feed.....	23	0.976	281.3	289.2	28.0	3.0	3.6	13.6	2.8
Mineral products.....	V	8.380	307.8	319.8	-5.1	-8.0	-0.1	4.4	3.9
Mineral fuels, oils and residuals, bituminous substances and mineral waxes.....	27	7.792	304.6	317.3	-5.0	-8.4	-0.1	4.9	4.2
Products of the chemical or allied industries.....	VI	12.157	154.0	154.6	-0.5	-0.4	-0.6	0.5	0.4
Inorganic chemicals.....	28	1.005	185.7	186.0	-4.6	-0.4	1.3	0.1	0.2
Organic chemicals.....	29	3.380	164.6	166.0	-1.5	-1.7	-2.1	1.9	0.9
Pharmaceutical products.....	30	3.135	123.9	124.4	-1.2	-0.3	-0.2	0.1	0.4
Essential oils and resinoids; perfumery cosmetic or toilet preparations.....	33	0.760	136.0	136.1	1.3	0.4	-0.1	0.1	0.1
Soap; lubricants; waxes, polishing or scouring products; candles, pastes.....	34	0.466	123.0	123.0	0.1	0.0	-0.1	-0.1	0.0
Miscellaneous chemical products.....	38	1.755	152.4	153.0	1.4	-0.2	-0.1	-0.3	0.4
Plastics and articles thereof; rubber and articles thereof.....	VII	5.380	146.7	149.0	-2.9	-3.1	-1.7	0.8	1.6
Plastics and articles thereof.....	39	4.315	137.6	140.3	-2.2	-3.0	-1.7	1.0	2.0
Rubber and articles thereof.....	40	1.065	190.0	189.6	-5.7	-3.6	-1.9	-0.1	-0.2
Raw hides, skins, leather, furskins, travel goods, etc.....	VIII	0.374	132.1	131.8	-1.1	-2.8	-0.1	1.6	-0.2
Wood, wood charcoal, cork, straw, basketware and wickerwork.....	IX	0.543	110.0	110.9	1.4	0.9	-0.3	0.0	0.8
Woodpulp, recovered paper, and paper products.....	X	2.273	115.8	114.7	-9.6	-0.1	-0.2	-1.5	-0.9
Woodpulp and recovered paper.....	47	0.592	116.5	111.5	-26.6	0.0	-1.3	-6.4	-4.3
Paper and paperboard; articles of paper pulp, paper or paperboard.....	48	1.226	117.1	117.5	-1.9	-0.1	0.2	0.3	0.3
Printed material.....	49	0.455	121.2	121.3	1.8	-0.1	0.7	0.1	0.1
Textile and textile articles.....	XI	1.896	125.5	125.6	-8.8	-3.1	-0.3	0.8	0.1
Cotton, including yarns and woven fabrics thereof.....	52	0.569	133.0	132.5	-30.4	-11.1	-2.0	2.8	-0.4
Stone, plaster, cement, asbestos, ceramics, glass etc.....	XIII	0.742	117.8	117.8	1.1	-0.1	0.1	0.0	0.0
Glass and glassware.....	70	0.400	98.5	98.5	-0.4	-0.1	-0.1	0.1	0.0

See footnotes at end of table.

Table 6. U.S. export price indexes and percent changes for selected categories of goods: September 2011 to September 2012 — Continued
 [2000=100, unless otherwise noted]

Description	Harmonized system	Relative importance Aug. 2012 ¹	Index		Percent change				
			Aug. 2012	Sept. 2012	Annual	Monthly			
					Sept. 2011 to Sept. 2012	May 2012 to June 2012	June 2012 to July 2012	July 2012 to Aug. 2012	Aug. 2012 to Sept. 2012
Pearls, stones, precious metals, imitation jewelry, and coins.....	XIV	5.106	271.8	287.5	-5.6	-1.5	-0.9	-1.2	5.8
Base metals and articles of base metals.....	XV	5.433	171.6	170.6	-7.1	-3.5	-0.6	-0.1	-0.6
Iron and steel.....	72	1.606	203.3	197.7	-15.2	-6.9	-3.5	0.6	-2.8
Articles of iron or steel.....	73	1.363	173.1	173.0	1.5	-0.5	0.6	-0.2	-0.1
Copper and articles thereof.....	74	0.632	242.3	247.2	-12.3	-7.3	1.5	-1.5	2.0
Aluminum and articles thereof.....	76	0.806	123.2	124.0	-8.6	-2.2	-1.0	-0.4	0.6
Tools, implements, cutlery, spoons and forks, of base metal; parts thereof.....	82	0.392	134.4	134.5	5.7	0.0	3.9	0.1	0.1
Miscellaneous articles of base metal.....	83	0.339	146.0	146.0	7.6	0.1	0.0	0.1	0.0
Machinery, electrical equipment, TV image and sound recorders, parts, etc.....	XVI	27.521	96.9	97.0	0.6	-0.2	-0.2	-0.1	0.1
Machinery and mechanical appliances; parts thereof.....	84	16.016	110.4	110.5	1.7	0.1	-0.1	-0.1	0.1
Electrical machinery and equipment and parts and accessories thereof.....	85	11.505	82.3	82.4	-1.0	-0.5	-0.4	-0.1	0.1
Vehicles, aircraft, vessels and associated transport equipment.....	XVII	10.954	126.8	126.9	2.4	-0.1	0.2	-0.2	0.1
Motor vehicles and their parts.....	87	7.238	113.0	113.1	2.3	-0.1	0.2	-0.2	0.1
Optical, photo, measuring, medical & musical instruments; & timepieces.....	XVIII	5.789	106.0	106.1	0.5	-0.2	-0.1	0.1	0.1
Miscellaneous manufactured articles.....	XX	1.344	110.2	110.3	1.1	0.1	0.0	-0.2	0.1
Furniture; stuffed furnishings; lamps and lighting fittings nesoi;.....	94	0.694	119.8	120.0	-0.2	0.1	0.1	-0.2	0.2
Toys, games and sports equipment; parts and accessories thereof.....	95	0.518	90.9	90.9	1.0	0.0	0.0	-0.3	0.0

¹ Relative importance figures are based on 2010 trade values.

NOTES: Data may be revised in each of the three months after original publication.

Dash = Not available

Table 7. U.S. import price indexes and percent changes by locality of origin: September 2011 to September 2012

[2000=100, unless otherwise noted]

Description	Relative importance Aug. 2012 ¹	Index		Percent change				
		Aug. 2012	Sept. 2012	Annual	Monthly			
				Sept. 2011 to Sept. 2012	May 2012 to June 2012	June 2012 to July 2012	July 2012 to Aug. 2012	Aug. 2012 to Sept. 2012
Industrialized Countries²	100.000	130.0	131.1	-1.4	-1.1	-0.6	0.5	0.8
Nonmanufactured articles.....	11.920	212.7	220.7	-5.3	-4.4	-2.2	7.3	3.8
Manufactured articles.....	87.429	123.1	123.7	-1.0	-0.6	-0.4	-0.5	0.5
Other Countries³	100.000	139.1	140.7	-0.3	-2.7	-0.7	1.0	1.2
Nonmanufactured articles.....	24.399	337.7	351.9	-1.2	-8.5	-3.3	3.6	4.2
Manufactured articles.....	75.263	111.6	111.7	-0.1	-0.6	0.2	0.2	0.1
Canada	100.000	148.2	150.4	-3.0	-1.9	-1.7	2.3	1.5
Nonmanufactured articles.....	27.988	200.9	208.8	-6.4	-3.6	-2.6	7.4	3.9
Manufactured articles.....	70.931	138.0	138.8	-1.6	-1.2	-1.4	0.4	0.6
European Union⁴	100.000	134.2	134.0	-1.8	-0.7	-0.3	-0.3	-0.1
Nonmanufactured articles.....	2.123	338.9	350.4	0.0	-10.7	-0.4	-0.1	3.4
Manufactured articles.....	97.664	130.8	130.5	-1.9	-0.5	-0.2	-0.4	-0.2
France (Dec. 2003=100)	100.000	119.8	119.8	-0.3	-0.4	-0.5	-0.3	0.0
Germany (Dec. 2003=100)	100.000	114.0	114.2	-1.6	-0.3	0.1	-0.4	0.2
United Kingdom (Dec. 2003=100)	100.000	131.4	132.5	-0.8	-2.1	-0.5	-0.2	0.8
Latin America⁵	100.000	175.5	178.5	-0.7	-4.3	-0.3	1.6	1.7
Nonmanufactured articles.....	34.694	368.8	383.7	1.3	-9.9	-0.3	4.4	4.0
Manufactured articles.....	64.879	133.3	133.8	-2.2	-1.0	-0.4	0.2	0.4
Mexico (Dec. 2003=100)	100.000	144.0	145.9	-1.2	-2.7	-0.1	0.6	1.3
Nonmanufactured articles (Dec. 2008=100).....	20.824	195.9	206.9	2.1	-10.5	-0.5	4.4	5.6
Manufactured articles (Dec. 2008=100)....	79.176	94.6	94.8	-2.3	-0.4	0.0	-0.3	0.2
Pacific Rim (Dec. 2003=100)⁶	100.000	104.4	104.4	-0.3	-0.2	0.0	-0.1	0.0
China (Dec. 2003=100)	100.000	104.9	104.8	0.4	0.0	0.0	0.0	-0.1
Japan	100.000	102.7	102.9	1.2	0.1	0.0	0.1	0.2
Asian NICs⁷	100.000	90.9	91.1	-0.8	0.2	0.1	0.0	0.2
ASEAN (Dec. 2003=100)⁸	100.000	104.4	104.5	-1.1	-0.8	-0.2	-0.4	0.1
Asia Near East (Dec. 2003=100)⁹	100.000	251.8	257.7	-7.1	-7.9	-5.1	-1.8	2.3

1 Relative figures are based on 2010 trade values.

2 Includes Western Europe, Canada, Japan, Australia, New Zealand and South Africa.

3 Includes Eastern Europe, Latin America, OPEC countries, and other countries in Asia, Africa and the Western Hemisphere.

4 Includes European Union countries.

5 Includes Mexico, Central America, South America and the Caribbean.

6 Includes China, Japan, Australia, Brunei, Indonesia, Macao, Malaysia, New Zealand, Papua New Guinea, Philippines and Asian Newly Industrialized Countries.

7 Asian Newly Industrialized Countries. Includes Hong Kong, Singapore, South Korea and Taiwan.

8 Association of Southeast Asian Nations. Includes Brunei, Cambodia, Indonesia, Laos, Malaysia, Myanmar, Philippines, Singapore, Thailand and Vietnam.

9 Includes Bahrain, Iran, Iraq, Israel, Jordan, Kuwait, Lebanon, Oman, Qatar, Saudi Arabia, Syria, United Arab Emirates and Yemen.

NOTES: Data may be revised in each of the three months after original publication.

Regions are not mutually exclusive.

Dash = Not available

Table 8. U.S. international price indexes and percent changes for selected transportation services: September 2011 to September 2012

[2000=100, unless otherwise noted]

Description	Relative importance Aug. 2012 ¹	Index		Percent change				
		Aug. 2012	Sept. 2012	Annual	Monthly			
				Sept. 2011 to Sept. 2012	May 2012 to June 2012	June 2012 to July 2012	July 2012 to Aug. 2012	Aug. 2012 to Sept. 2012
Air Freight								
Import Air Freight	100.000	173.3	173.9	-6.3	0.6	-1.4	-1.6	0.3
Europe (Dec. 2003=100).....	23.407	156.2	157.7	-12.3	-2.1	-2.7	-0.9	1.0
Asia.....	72.043	155.5	155.7	-4.4	1.6	-1.1	-2.0	0.1
Export Air Freight	100.000	143.2	147.0	0.4	-1.8	-2.2	-1.0	2.7
Europe (Dec. 2006=100).....	36.367	130.0	132.2	0.0	-1.8	-1.6	-1.0	1.7
Inbound Air Freight	100.000	161.0	163.2	-0.6	1.0	-1.0	-0.3	1.4
Europe (Dec. 2003=100).....	23.940	143.2	145.2	-7.9	-2.5	-1.4	-1.0	1.4
Asia.....	64.839	147.6	149.7	2.3	2.8	-0.9	-0.1	1.4
Outbound Air Freight	100.000	144.8	147.0	2.2	-0.9	-2.8	0.0	1.5
Europe (Dec. 2003=100).....	30.973	163.2	164.3	2.4	-1.1	-1.2	0.1	0.7
Asia.....	49.198	136.3	138.9	1.2	-0.7	-4.2	-0.1	1.9
Air Passenger Fares								
Import Air Passenger Fares	100.000	182.7	179.8	3.0	10.3	-3.2	-5.5	-1.6
Europe.....	39.143	190.1	191.2	4.5	20.0	-7.1	-8.0	0.6
Asia.....	27.728	161.3	152.6	0.5	7.3	-1.2	-3.5	-5.4
Latin America/Caribbean.....	11.791	172.5	156.8	-6.4	1.7	1.3	-2.0	-9.1
Export Air Passenger Fares	100.000	218.5	194.4	0.9	2.1	4.8	2.8	-11.0
Europe.....	26.047	243.5	219.2	-5.1	13.7	1.1	-5.2	-10.0
Asia.....	33.348	233.3	172.8	-4.5	-0.2	3.2	26.4	-25.9
Latin America/Caribbean.....	21.540	228.0	225.4	17.6	-2.5	6.0	-4.0	-1.1

¹ Relative importance figures are based on 2010 trade values.

NOTES: Data may be revised in each of the three months after original publication.

Dash = Not available

TECHNICAL NOTE

Import and Export Merchandise and Services Price Indexes -- All indexes use a modified Laspeyres formula and are not seasonally adjusted. Price indexes are reweighted annually, with a two-year lag in the weights. Published series use a base year of 2000=100 where possible. More detailed index series and additional information may be obtained at <http://www.bls.gov/mxp>, or by calling (202) 691-7101.

Merchandise Goods Classification Systems -- The merchandise price indexes are published using three classification systems. Items are classified by end use according to the Bureau of Economic Analysis Classification System, by industry according to the North American Industry Classification System (NAICS), and by product category according to the Harmonized System (HS). While classification by end use and product category are self-explanatory, some notes are in order for classifying items by industry. In the NAICS imports and exports tables, items are classified by output industry, not input industry. As an example, NAICS import index 326 (plastics and rubber products manufacturing) include outputs such as manufactured plastic rather than inputs such as petroleum. The NAICS classification structure also matches the classification system used by the PPI (Producer Price Index) to produce the NAICS primary products indexes.

Import Price Indexes -- Products have been classified by the Harmonized Tariff Schedule of the United States Annotated (TSUSA). Import prices are based on U.S. dollar prices paid by the U.S. importer. The prices are generally either "free on board" (f.o.b.) foreign port or "cost, insurance, and freight" (c.i.f.) U.S. port transaction prices, depending on the practices of the individual industry. The index for crude petroleum is calculated from data collected by the U.S. Department of Energy.

Export Price Indexes -- Products have been classified by the Harmonized Schedule B classification system of the U.S. Bureau of the Census. The prices used are generally either "free alongside ship" (f.a.s.) factory or "free on board" (f.o.b.) transaction prices, depending on the practices of the individual industry. Prices used in the grain index, excluding rice, are obtained from the U.S. Department of Agriculture.

Services Price Indexes -- Starting in September 2008 the Import Air Passenger Fares Indexes represent changes in the average revenue per passenger received by foreign carriers from U.S. residents and are calculated from data obtained from an airline consulting service. These data include tickets sold by travel agencies and travel websites. Tickets sold directly by the airlines are excluded, as are frequent flyer tickets generally. Starting in January 2008 the Export Air Passenger Fares Indexes represent changes in the average revenue per passenger received by U.S. carriers from foreign residents and are calculated from data collected directly from airlines. These data include frequent flyer tickets and those sold by consolidators. Taxes and fees are included in the Import Air Passenger Fares Index and excluded from the Export Air Passenger Fares Index. The Air Freight Indexes are calculated from data collected directly from airlines. These data exclude mail and passenger baggage. The scope of the service being priced is the movement of freight from airport to airport only, and does not include any ground transportation or port service. The Air Freight Indexes are presented using two definitions: Balance of Payments (which represent transactions between U.S. and foreign residents) and International (which represent transactions inbound to and outbound from the U.S.). Fact sheets specifying detailed information for each services industry are available at <http://www.bls.gov/mxp> under "MXP Publications."

Import Indexes by Locality of Origin -- Prices used in these indexes are a subset of the data collected for the Import Price Indexes. Beginning with January 2002, the indexes are defined by locality of origin using a nomenclature based upon the North American Industry Classification System (NAICS). Nonmanufactured goods are defined as NAICS 11 and 21 and manufactured goods are defined as NAICS 31-33.

Revision Policy -- To reflect the availability of late reports and corrections by respondents, monthly data may be revised in each of the three months after original publication. After three months, no further data revisions take place. So, for example, data released in the January release will be subject to revision in the releases for February, March, and April.

Uses of the Data -- The primary use of the indexes is to deflate trade statistics, notably the foreign trade sector of the National Income and Product Accounts constructed by the Department of Commerce. Other published indexes are useful for general market analysis. For trade in international services, Balance of Payments indexes are used for deflating National Income and Product Accounts, while International indexes are more appropriate for market analysis. Merchandise and services indexes also can be used to study U.S. competitiveness and to compute price elasticities, and the merchandise import indexes by country or region of origin are useful in terms of trade analysis.

E-Mail Subscription -- The U.S. Import and Export Price Indexes news release is available through an e-mail subscription service at (<http://www.bls.gov/bls/list.htm>).

Additional Information -- More detailed data are available on the Import/Export Price Indexes home page at (<http://www.bls.gov/mxp>). Flat Files and the FTP server are available for users requiring access to either a large volume of time series data or other related documentation. The FTP site can be accessed at <ftp://ftp.bls.gov>. For technical assistance in using the BLS Internet site, send e-mail to (labstat.helpdesk@bls.gov). For Import/Export Price Index data requests, send e-mail to (mxpinfo@bls.gov).

Information from this release will be made available to sensory impaired individuals upon request. Voice phone: 202-691-5200; Federal Relay Service: 1-800-877-8339.