

U.S. Coral Reef Task Force



Photo Credit: Tom Moore

*Watershed Partnership Initiative
Guánica Bay/Rio Loco, Puerto Rico*

Partnership Agencies



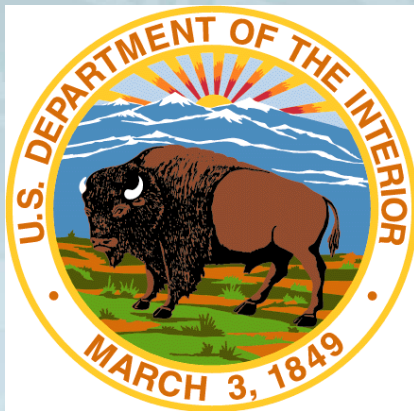
Puerto Rico



USDA-NRCS



NOAA



DOI-USFWS



USEPA



National Fish and Wildlife Foundation

Watershed Priority Needs



1. High Mountain Sediment Sources
2. Stream Bank Stabilization
3. Lagoon Restoration
4. Constructed Wetlands

Photo Credit: Tom Moore

High Mountain Sediment Sources



Photo Credit: USFWS



Photo Credit: USFWS

1. Over 4,000 acres enrolled in USDA conservation programs
2. Conversion of sun-grown to shade-grown coffee plantations
3. Building and Strengthening a Network of Partners

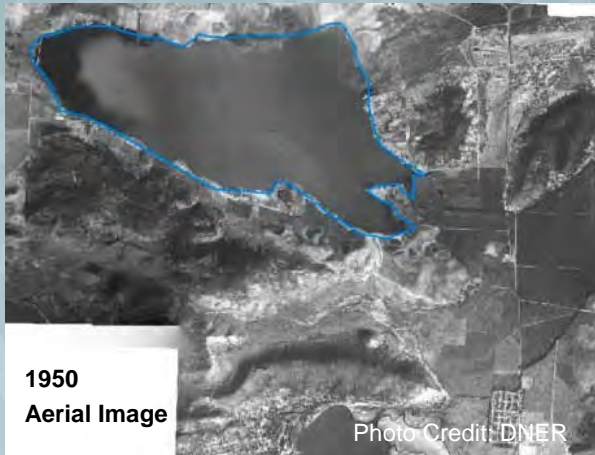
Stream Bank Stabilization



1. Streambank Assessment
2. Application of streambank stabilization conservation practices
3. Removal of old irrigation systems and channelization material



Lagoon Restoration



1. Conduct hydrologic and salinity studies
2. Develop engineering design scenarios
3. Stakeholder meetings with land owners, community members, and the PR Land Authority

Constructed Wetlands



Photo Credit: Paul Sturm

1. Design is complete; funding pending
2. NEPA review is complete
3. Partnership engagement

Next Steps



Photo Credit: Paul Sturm

1. Continue engaging private landowners to apply conservation practices
2. Engage additional partners to implement larger-scale projects
3. Continue assessing impacts to coral reef systems

Capacity Building Partnership



Photo Credit: Joaquin Chong

1. Competitive funding opportunity for local capacity building
2. Awards federal funds to local organizations and individuals to implement small- to mid-scale projects.
3. Administered for the USCRTF through the National Fish and Wildlife Foundation



Project Status

- Over \$400,000 in small project funding to 12 local partners (2010 & 2011)
- Grant Proposal Topics:
 - Reduce sediment, nutrient, and contaminant runoff
 - Raise community awareness and engagement in watershed and coral conservation issues
 - Build local, long-term capacity for watershed management



Needs & Recommendations



Photo Credit: NOAA/CCMA/Biogeography Branch

1. Review the Watershed Management Plan and assess remaining needs and potential next steps
2. Determine successful outcomes for coral reefs
3. Identify remaining resource needs to inform USCRTF members
4. Assess progress of USCRTF partnership schedule for completion

Project Grantee

Project Investigator: Joaquin Chong

Project: Techniques to Reduce Farm Soil and Nutrient Run-off

Funding: U. S. Coral Reef Task Force Partnership Initiative
2011 Grant: \$20,000 Partner Contributions: \$3,000

U.S. Coral Reef Task Force



Photo Credit: Tom Moore

*Watershed Partnership Initiative
Guánica Bay/Rio Loco, Puerto Rico*