



U.S. Virgin Islands Coral Reef Initiative



Alicia Barnes
Commissioner

Dept. of Planning & Natural Resources
USCRTF Meeting; Washington, DC - 2012

Coral Reefs support our Culture



Cultural & recreational practices



Historic architecture

USVI Economic Crisis – Troubled Waters

USVI 168th YEAR THURSDAY, JANUARY 19, 2012, NO. 13 75c

The End

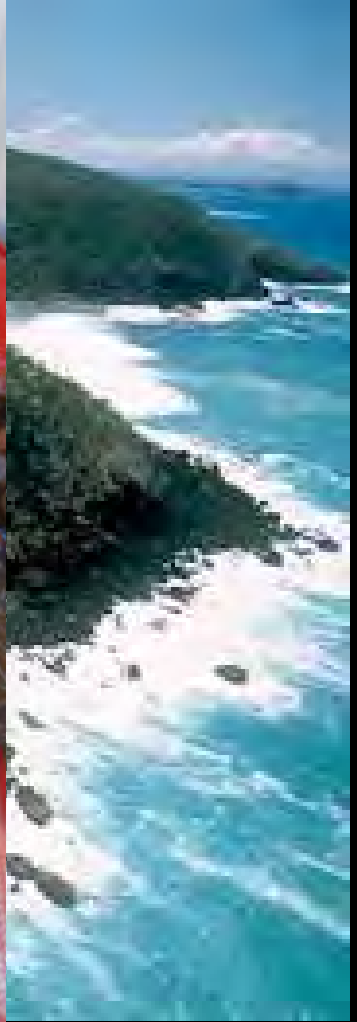
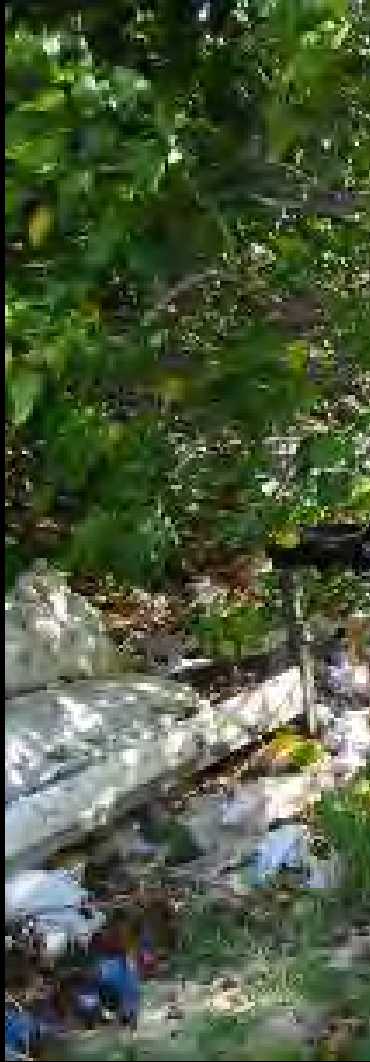
Hovensa announces closure of refinery



- Company cites hundreds of millions in losses
- Thousands face unemployment on St. Croix
- Governor, delegate promise action
- Senators react to shutdown

employees could quickly lose their jobs because of insufficient funds to pay their salaries, according to Government House.

USVI Economic Crisis – Increased Pressure on Resources?



Healthy USVI Coral Reef Ecosystems are Valuable



Commercial and Recreational Fishing

Healthy USVI Coral Reef Ecosystems are Valuable



Recreation and Tourism

Healthy USVI Coral Reef Ecosystems are Valuable

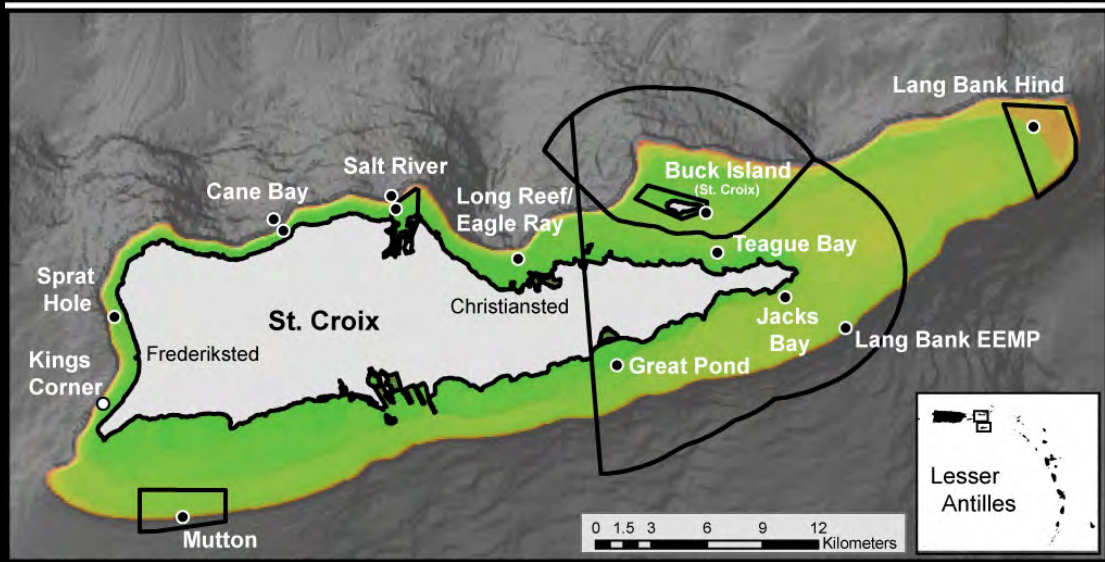
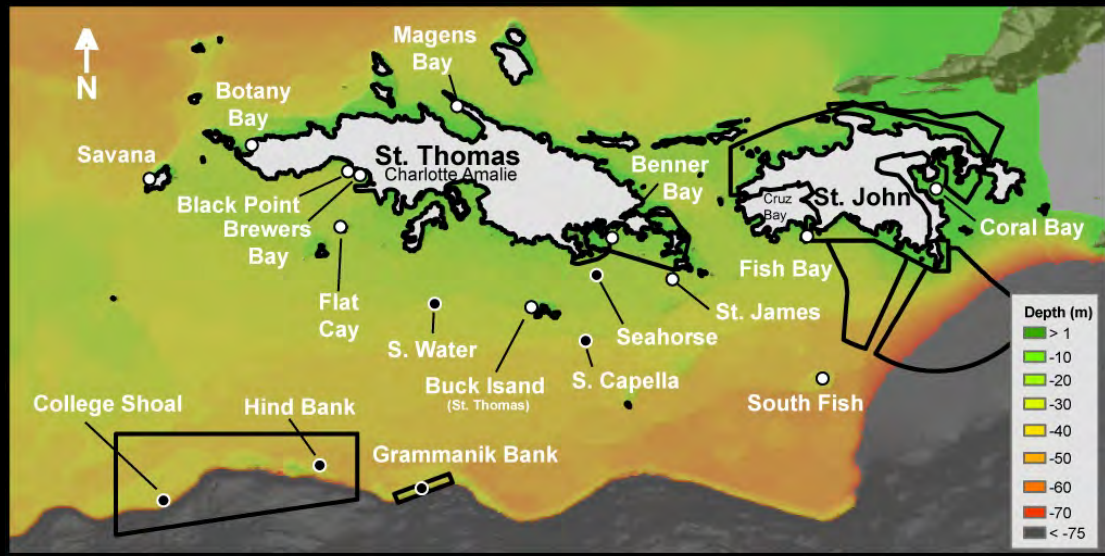


Shoreline Protection, Nursery Habitat and Education

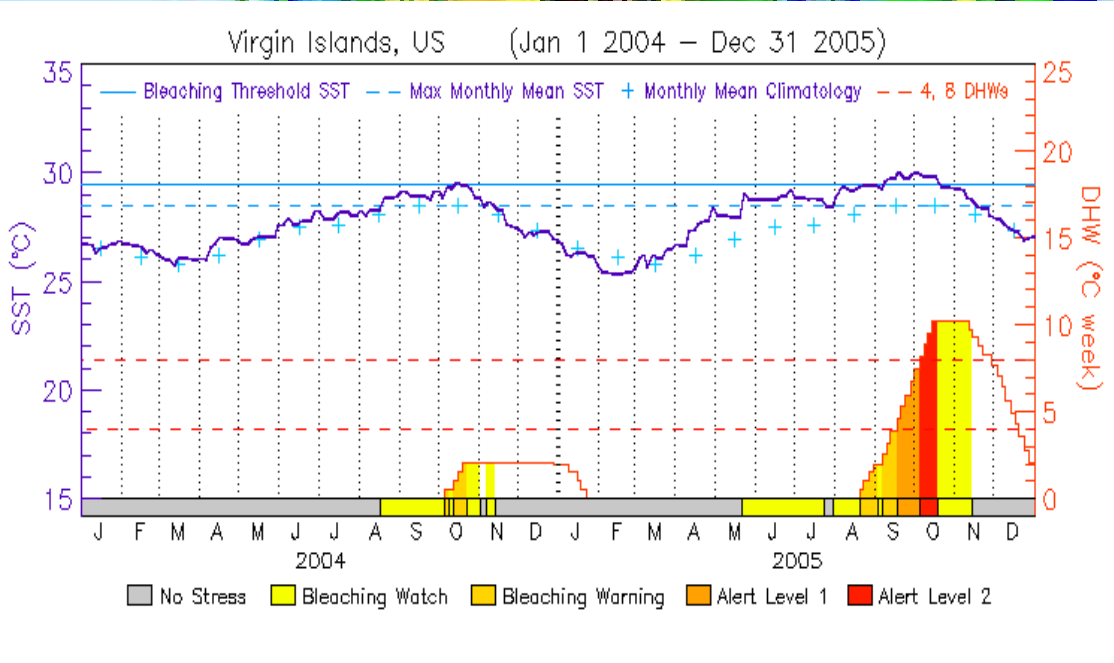
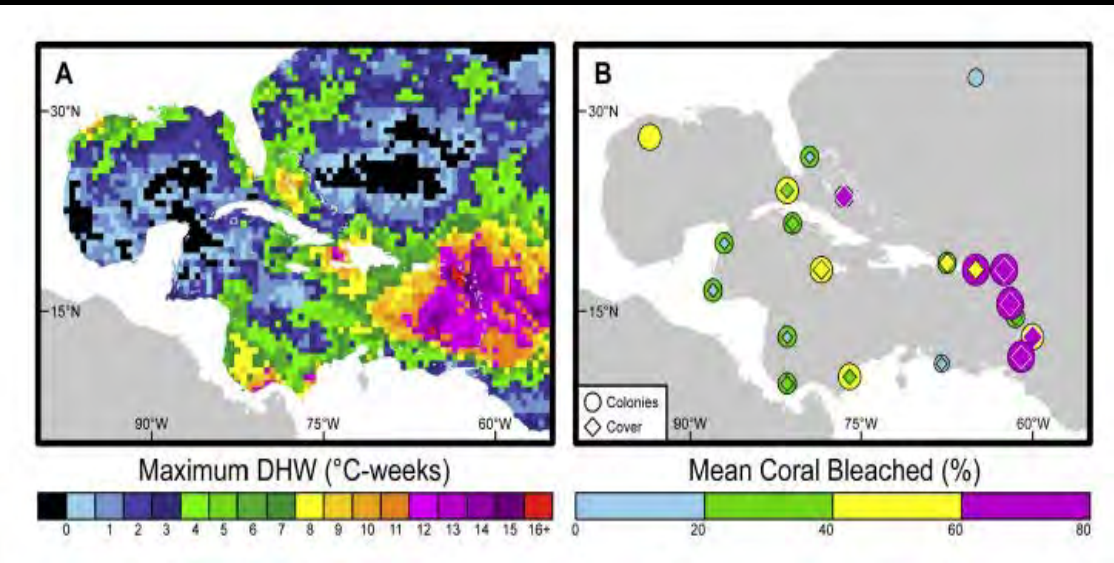
Caribbean ROP – planning to preserve the value of our ocean



TCRMP – Future of USVI Coral Reefs?



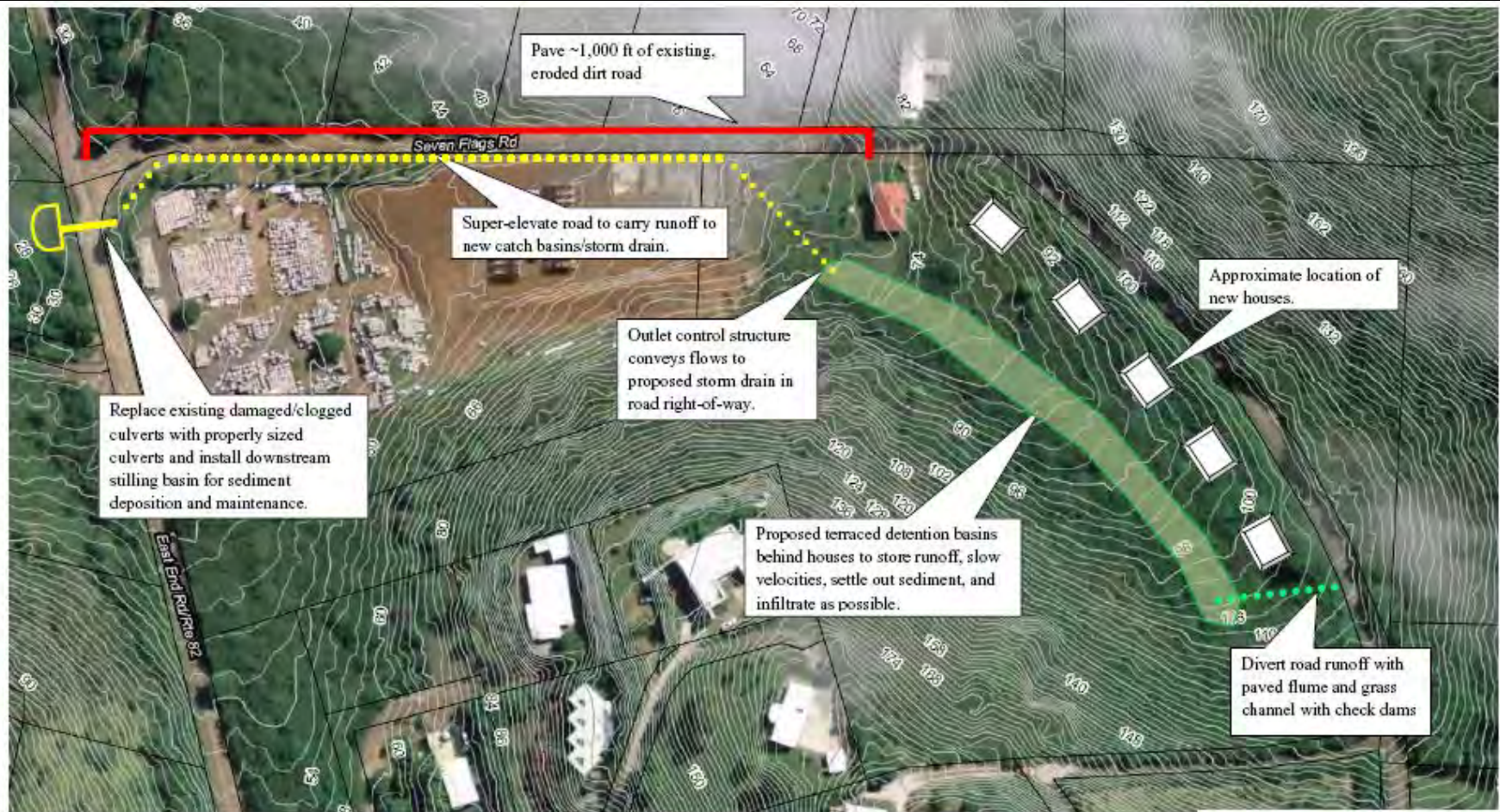
Global Stressors



Local Stressors - LBSP



Watershed Approaches – Planning



Watershed Approaches – Restoration



Partner investments increase capacity for in-water action

1st ANNUAL
STAND UP PADDLE BOARD RACE
FOR THE ST. CROIX EAST END MARINE PARK

Sunday, September 4, 2011
@ The St. Croix Yacht Club
8am till...

Come win our grand raffle prize,
a brand new stand up paddle board and paddle!!!

Trophies and prizes!!!

Adult Races (Elite & Open) \$40
(includes race shirt, reusable water bottle, raffle ticket & lunch)

Kids Fun Race \$20
(includes race shirt, reusable water bottle, raffle ticket & lunch)

General Admission \$5
(includes raffle ticket)

No board? No problem
FREE Boards for competitors
Limited number of boards available,
online registration encouraged

FUN ACTIVITIES FOR ALL
Live Music By:
Deanna Brown
Dick's Garage

Raffle Prizes

Info Booths
and more...

DETAILS & REGISTRATION: www.friendsofstxeemp.org
CONTACT: (340)718-3367, Friends.STXEEEMP@gmail.com



NOAA CRM Fellow
Sustainable Tourism &
Financing Products

Partner investments increase capacity for in-water action



Partner investments increase capacity for in-water action



Partner investments increase capacity for in-water action



EPA/600/R-10/054 | July 2010 | www.epa.gov/ord

Coral Reef Biological Criteria: Using the Clean Water Act to Protect a National Treasure



Office of Research and Development | National Health and Environmental Effects Research Laboratory

EPA-260-R-06-004
December 2006

Bioassessment Tools for Stony Corals: Field Testing of Monitoring Protocols in the US Virgin Islands (St. Croix)

Final Report

Leska S. Fore
Statistical Design
136 NW 40th St.
Seattle, WA 98107

William S. Fisher
U.S. Environmental Protection Agency
Office of Research and Development
National Health and Environmental Effects Research Laboratory
Gulf Ecology Division
1 Sabine Island Drive
Gulf Breeze, FL 32561

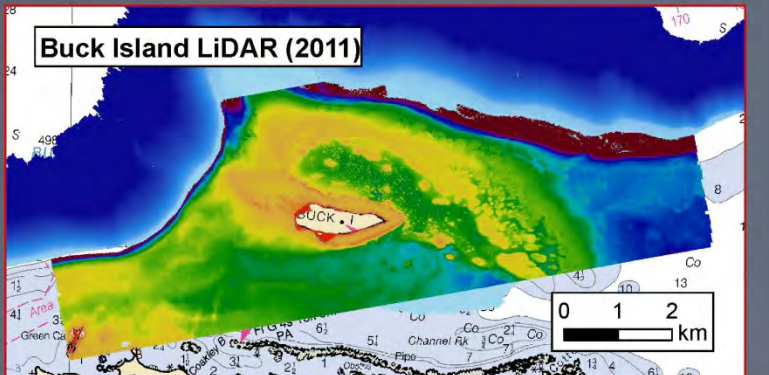
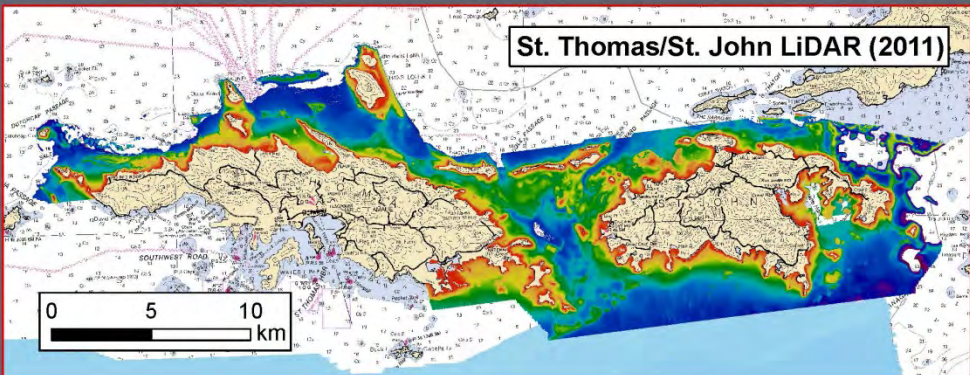
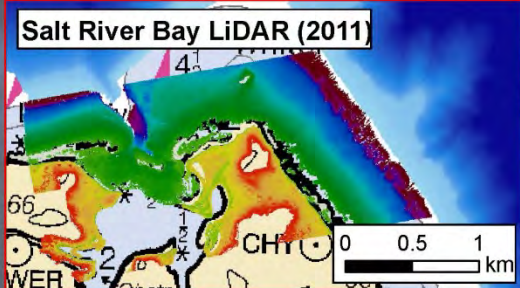
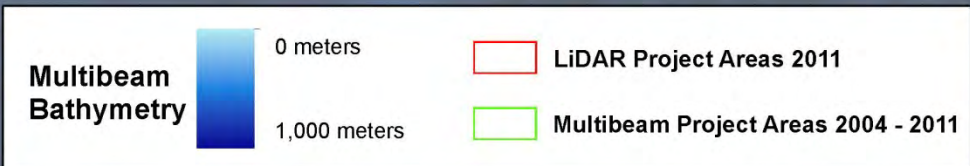
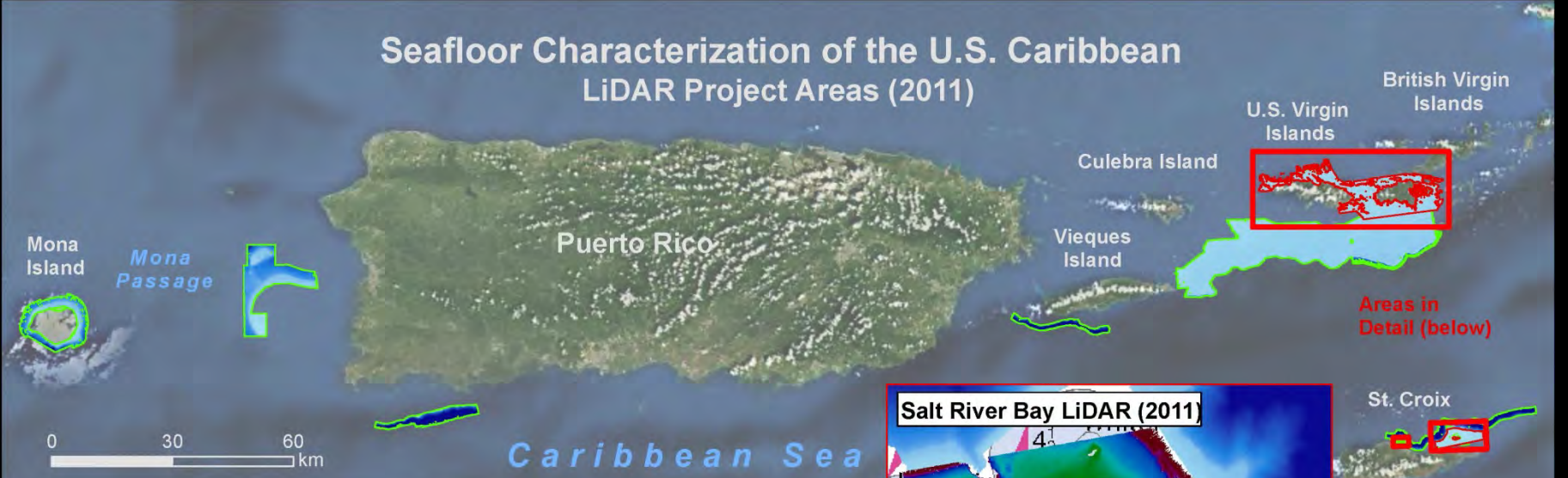
and

Wayne S. Davis
U.S. Environmental Protection Agency
Office of Environmental Information
Environmental Analysis Division
Environmental Science Center
701 Mapes Road
Ft. Meade, MD 20755-5350

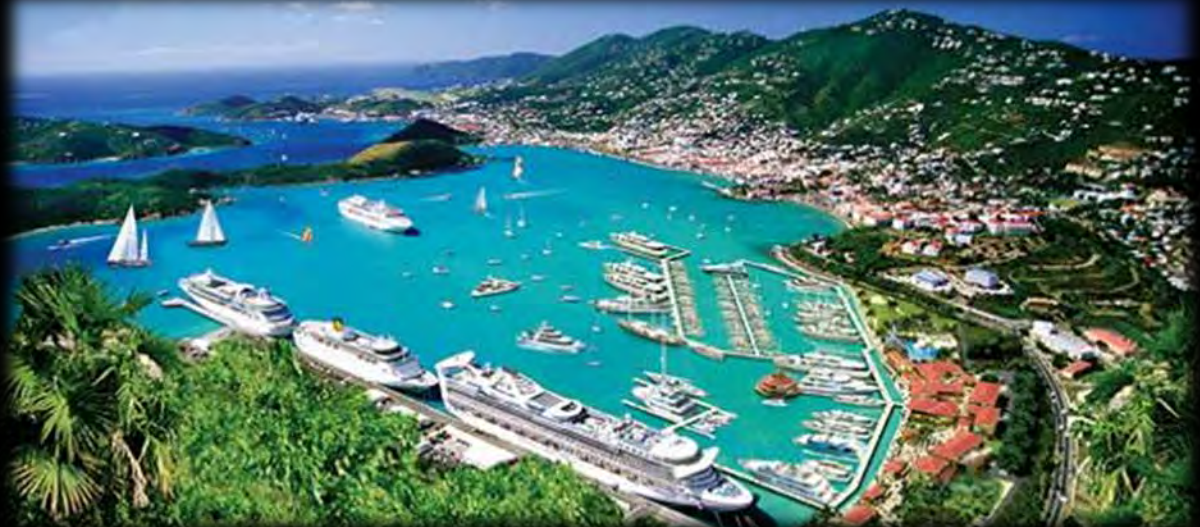


Partner investments increase capacity for in-water action

Seafloor Characterization of the U.S. Caribbean LiDAR Project Areas (2011)



How do we balance sustainable use & economic recovery?



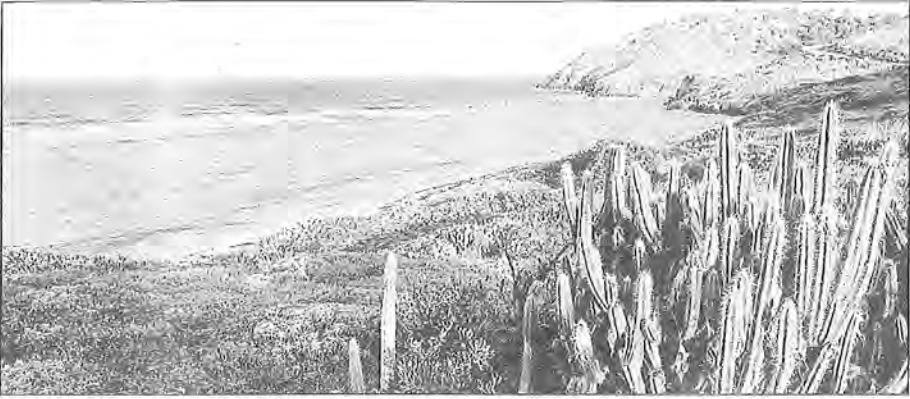
Opportunities moving forward



Luke Brander
Boris van Zanten
Els Verbrugge
Karin Lems

Monday, October 10, 2011

VIRGIN ISLANDS



Daily News Photo by CRISTIAN SIMESCU

A watershed management plan is being developed for St. Croix East End Marine Park.

Public to get final say on management plan

By DANIEL SHEA
Daily News Staff

ST. CROIX — V.I. Department of Planning and Natural Resources officials, with the help of private contributors, have almost concluded their watershed management project for the St. Croix East End Marine Park — a study that one official said could provide a foundation for dealing with watersheds throughout the territory.

The final meeting for public comment will be held Tuesday at 6 p.m. at the St. Croix Yacht Club, which

“But we need to protect all of our waters from this. Hopefully this will be a case study, and the solutions that we find in these plans can be and will be transferred to other areas in the territory.”

The watershed management plan, developed during the last year by the Horsley Witten Group, is available for review online. It outlines the work that needs to be done — paving and stabilizing roads; constructing wet bars and small buffer systems; and planting vegetation to grip loose soil — and hones in on problem areas

The vast system of dirt and gravel roads in many residential areas compounds problem, according to a statement from the USDA’s Natural Resource Conservation Service.

The four miles of dirt roads within the Solitude watershed contribute about 112 tons of sediment into the sea annually, which is a rate 11 times higher than under normal conditions, the statement said.

The severely eroded gut in Southgate is carrying out 10-15 feet of pasture land to the sea every year. The St. Croix Environmental



Opportunities moving forward



Thank You

