

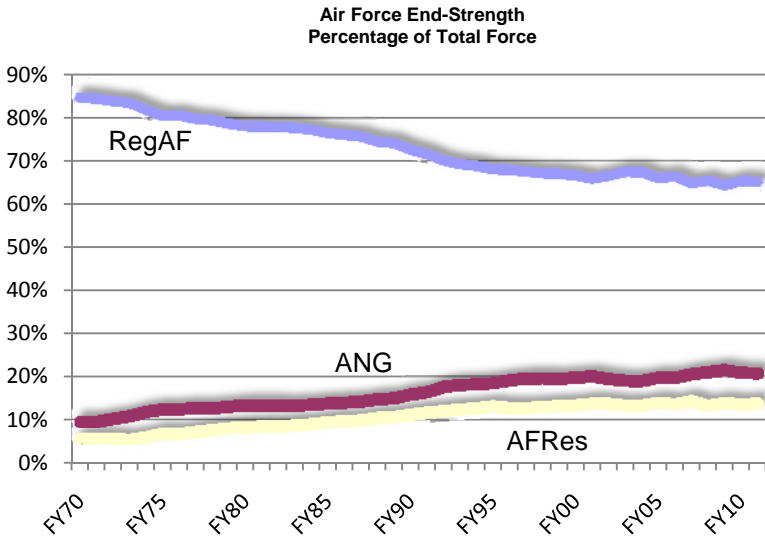
Chapter 3:

Total Force Personnel

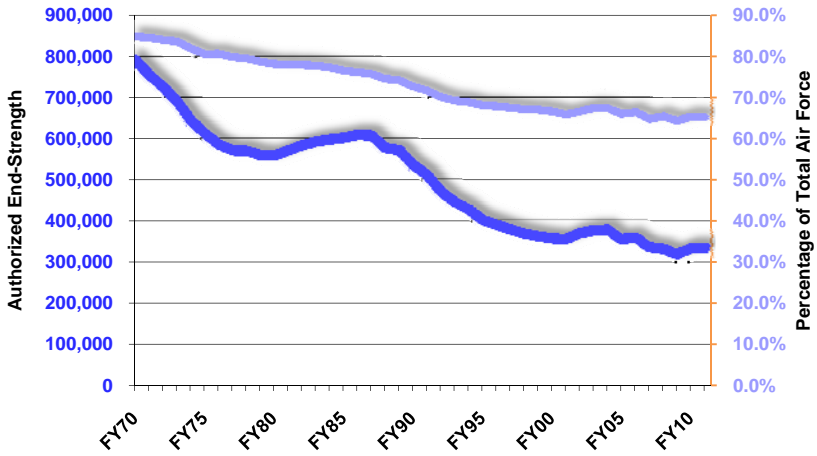
Manpower and Demographics

Total Force Endstrength, FY95 – FY09

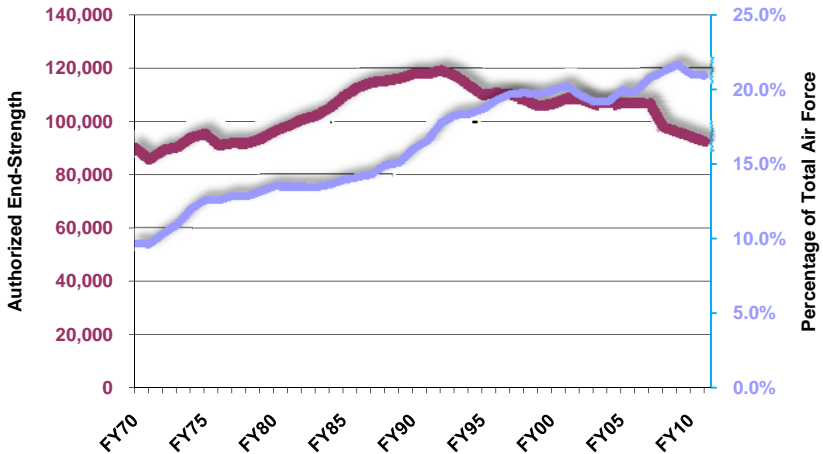
Source: NGB/A1

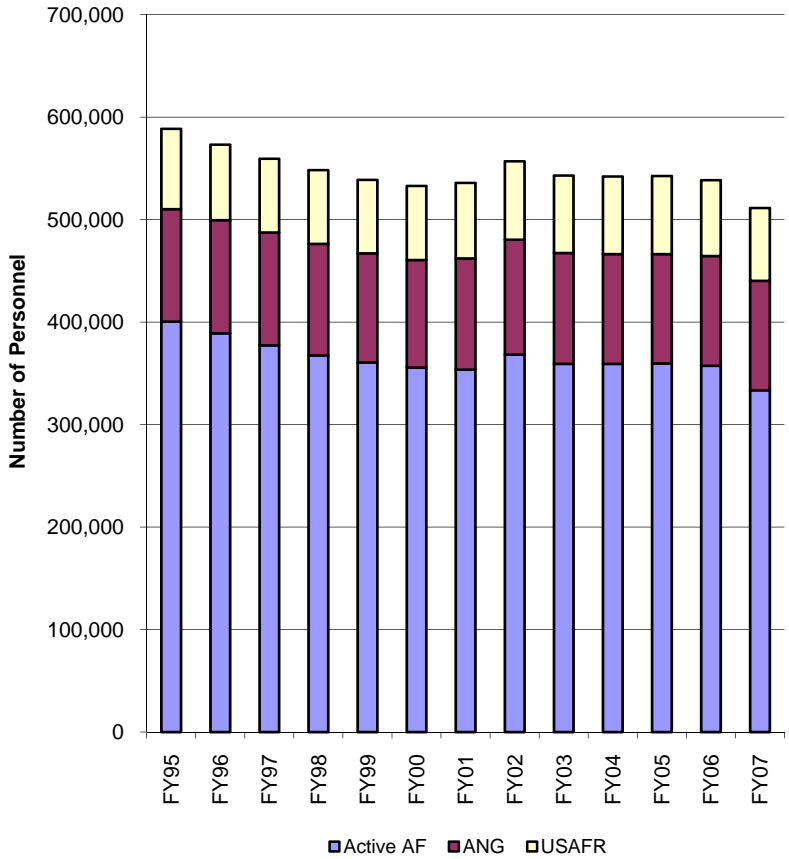


Regular Air Force Authorized End-Strength



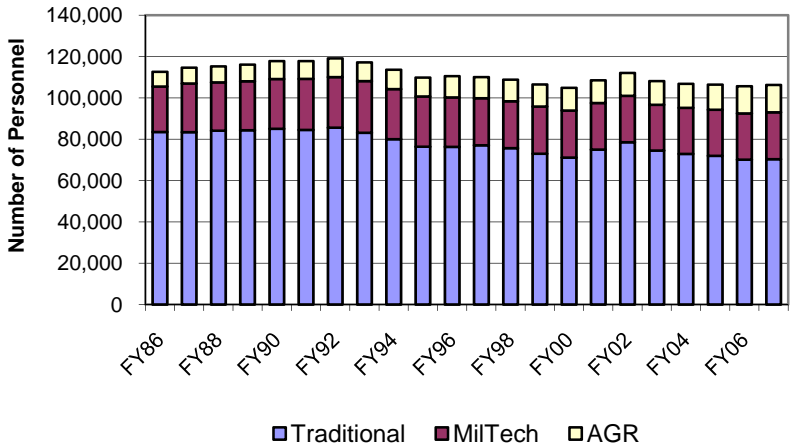
Air National Guard Authorized End-Strength





ANG Total Endstrenth, FY65 – FY09

Source: NGB/A1



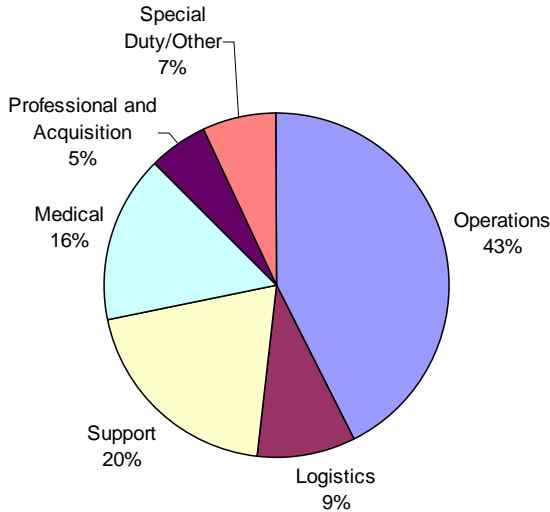
ANG Total Endstrenth, FY65 – FY09

Source: NGB/A1

FY	Traditional	%	MilTech	%	AGR	%	TOTAL
FY86	83,489	74.15%	22,005	19.54%	7,098	6.30%	112,592
FY87	83,412	72.79%	23,560	20.56%	7,623	6.65%	114,595
FY88	84,103	72.99%	23,409	20.32%	7,709	6.69%	115,221
FY89	84,354	72.68%	23,688	20.41%	8,019	6.91%	116,061
FY90	85,026	72.19%	24,119	20.48%	8,641	7.34%	117,786
FY91	84,453	71.70%	24,703	20.97%	8,630	7.33%	117,786
FY92	85,570	71.86%	24,471	20.55%	9,042	7.59%	119,083
FY93	83,115	70.94%	24,958	21.30%	9,089	7.76%	117,162
FY94	79,971	70.41%	24,304	21.40%	9,312	8.20%	113,587
FY95	76,339	69.51%	24,360	22.18%	9,127	8.31%	109,826
FY96	76,293	69.05%	23,931	21.66%	10,260	9.29%	110,484
FY97	77,075	70.05%	22,771	20.70%	10,179	9.25%	110,025
FY98	75,631	69.52%	22,699	20.86%	10,462	9.62%	108,792
FY99	72,936	68.50%	22,857	21.47%	10,683	10.03%	106,476
FY00	71,066	67.76%	22,758	21.70%	11,053	10.54%	104,877
FY01	74,997	69.13%	22,517	20.76%	10,973	10.11%	108,487
FY02	78,509	70.05%	22,449	20.03%	11,117	9.92%	112,075
FY03	74,522	68.91%	22,136	20.47%	11,480	10.62%	108,138
FY04	72,857	68.20%	22,328	20.90%	11,637	10.89%	106,822
FY05	71,951	67.60%	22,268	20.92%	12,211	11.47%	106,430
FY06	70,052	66.30%	22,401	21.20%	13,207	12.50%	105,660
FY07	70,331	66.19%	22,674	21.34%	13,249	12.47%	106,254
FY08	71,895	66.78%	21,995	20.43%	13,829	12.83%	107,679
FY09	71,895	66.60%	22,281	20.40%	14,175	13.00%	109,196

ANG Personnel by Career Fields, FY97 – FY09, Officers

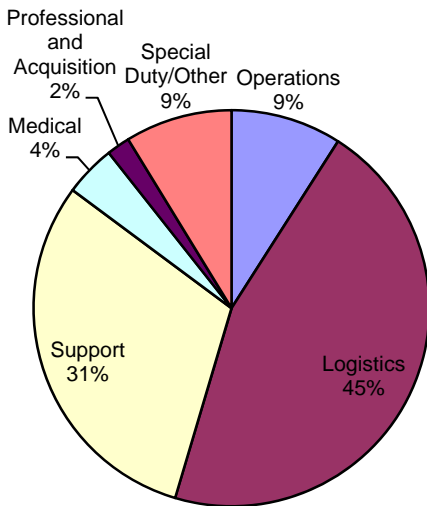
Source: NGB/A1



FY	Operations	Logistics	Support	Medical	Professional and Acquisition	Special Duty /Other	Total
FY97	5,612	1,302	2,739	2,046	644	12,343	12,343
FY98	5,559	1,304	2,631	2,065	656	12,215	12,215
FY99	5,538	1,286	2,620	2,070	669	12,183	12,183
FY00	5,471	1,258	2,570	2,134	663	12,096	12,096
FY01	5,575	1,305	2,629	2,124	716	12,349	12,349
FY02	5,829	1,380	2,717	2,253	750	1,003	13,932
FY03	5,738	1,346	2,719	2,189	758	952	13,702
FY04	5,708	1,298	2,710	2,154	765	999	13,634
FY05	5,743	1,260	2,747	2,156	766	1,000	13,672
FY06	5,799	1,264	2,758	2,195	769	997	13,782
FY07	5,944	1,306	2,801	2,228	761	985	14,025
FY08	1,227	2,303	6,066	790	938	2,791	14,115
FY09	6,190	1,241	2,724	2,362	818	991	14,326

ANG Personnel by Career Field, FY97 – FY07, Enlisted

Source: NGB/A1

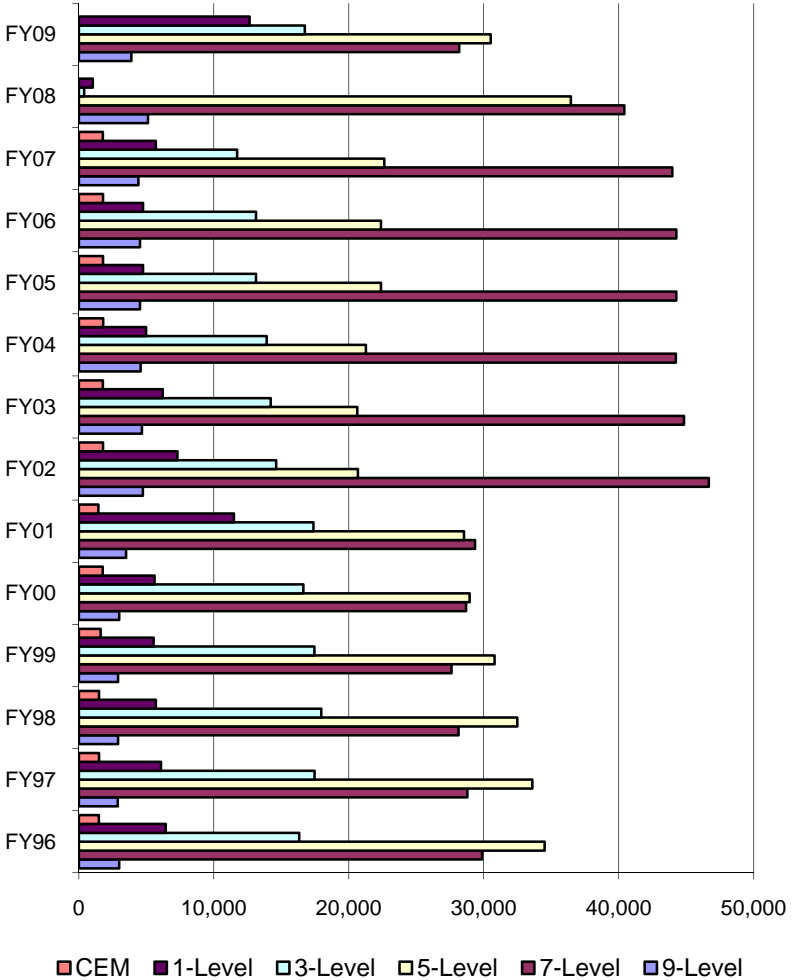


FY	Operations	Logistics	Support	Medical	Professional and Acquisition	Special Duty /Other	Total
FY97	6,687	46,767	30,220	4,933	1,795	90,402	90,402
FY98	6,679	45,816	29,651	4,879	1,747	88,772	88,772
FY99	6,704	44,373	28,526	4,678	1,723	86,004	86,004
FY00	6,719	43,745	28,024	4,577	1,691	84,756	84,756
FY01	7,419	47,277	30,474	4,850	1,781	91,801	91,801
FY02	7,677	46,429	30,203	4,683	1,804	7,346	98,142
FY03	7,857	45,462	29,205	4,388	1,755	5,769	94,436
FY04	8,073	44,847	28,843	4,330	1,778	5,317	93,188
FY05	8,084	44,036	28,568	4,092	1,756	6,222	92,758
FY06	8,098	42,602	27,969	3,869	1,749	7,591	91,878
FY07	8,345	42,012	28,192	3,863	1,752	8,065	92,229
FY08	40,642	3,935	9,412	1,762	9,028	28,785	93,564
FY09	9,821	39,825	28,890	3,939	1,738	10,657	94,870

ANG Skill Levels – Total and by Career Field

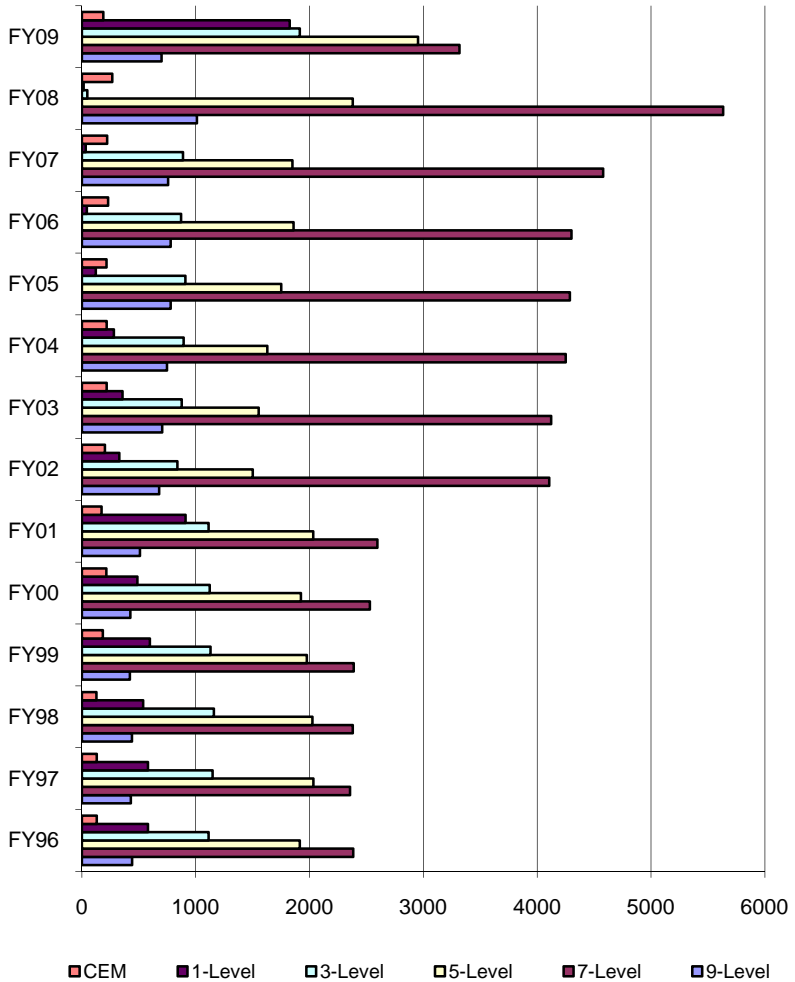
ANG Enlisted Skill Levels – Total, FY96 – FY09

Source: NGB/A1



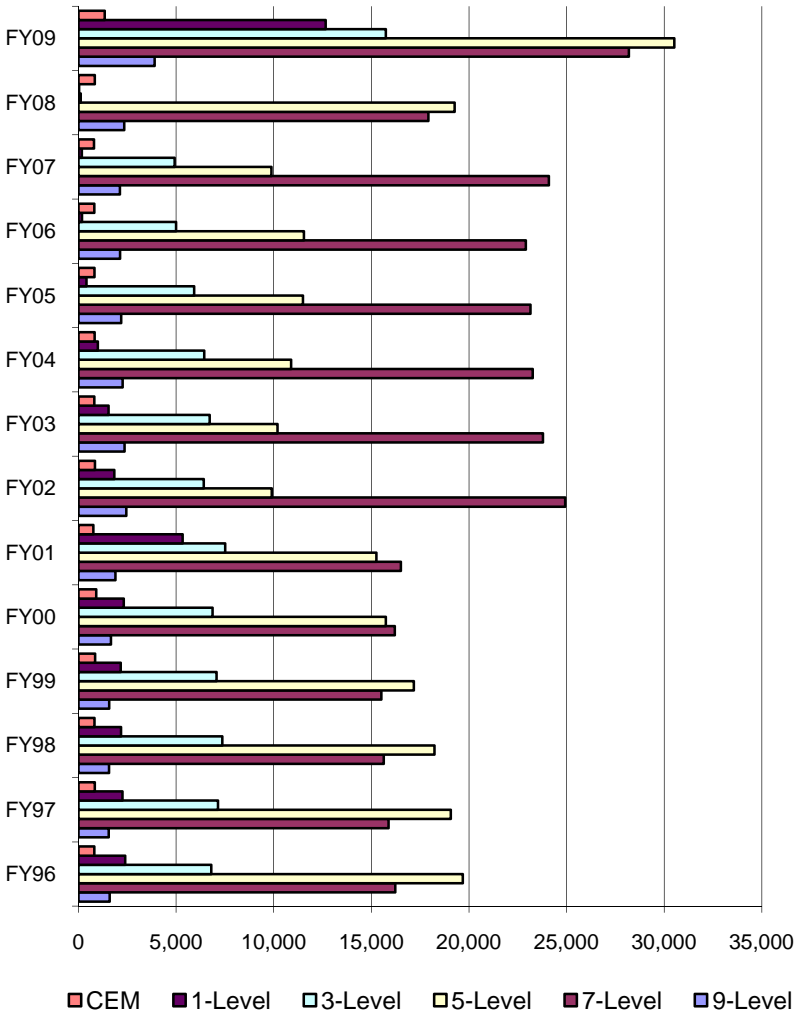
ANG Enlisted Skill Levels by Career Field – Operations, FY96 – FY09

Source: NGB/A1



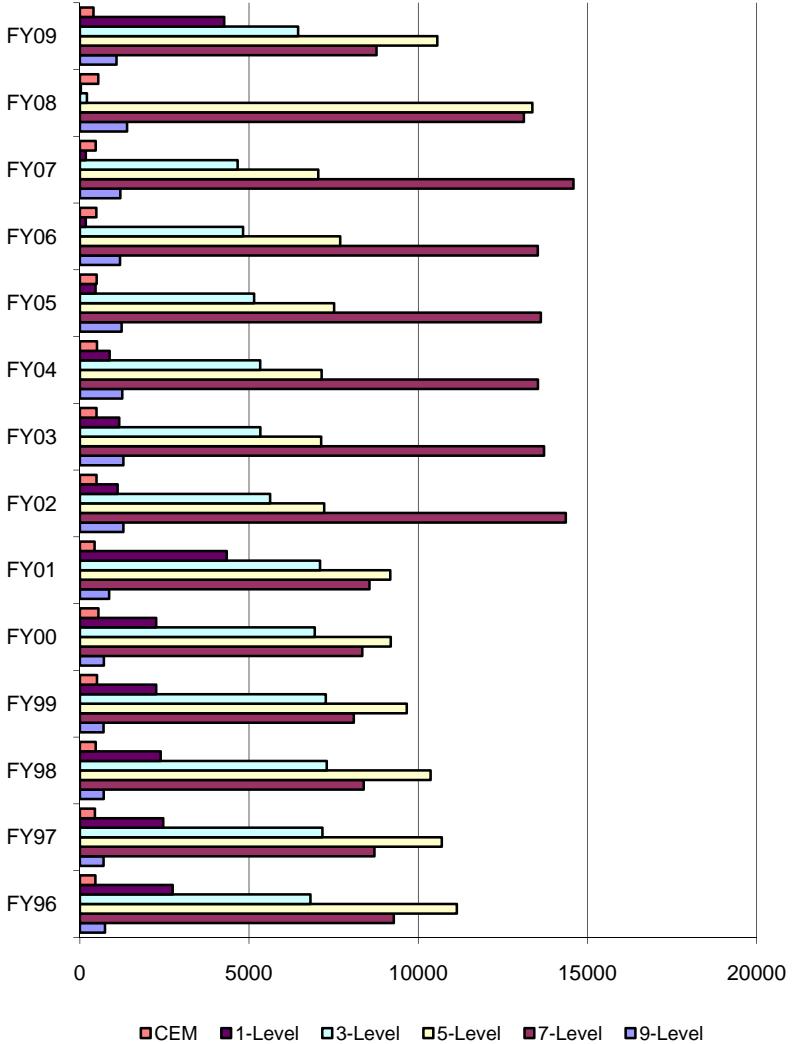
ANG Enlisted Skill Levels by Career Field – Logistics, FY96 – FY09

Source: NGB/A1



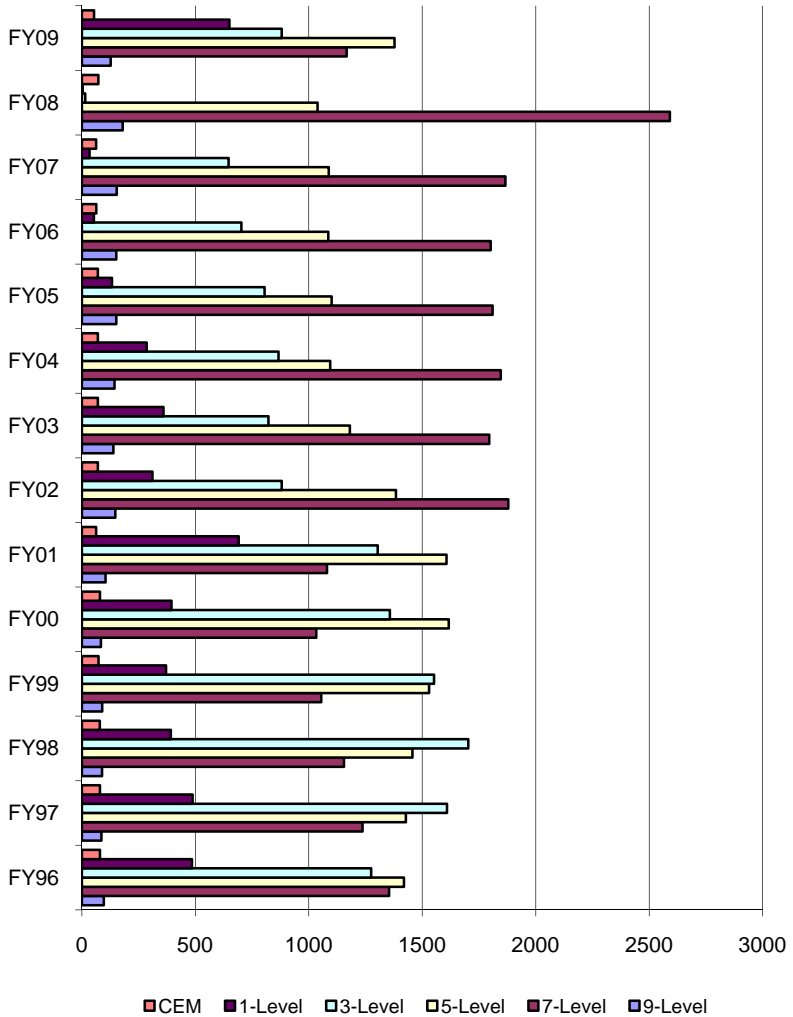
ANG Enlisted Skill Levels by Career Field – Support, FY96 – FY09

Source: NGB/A1



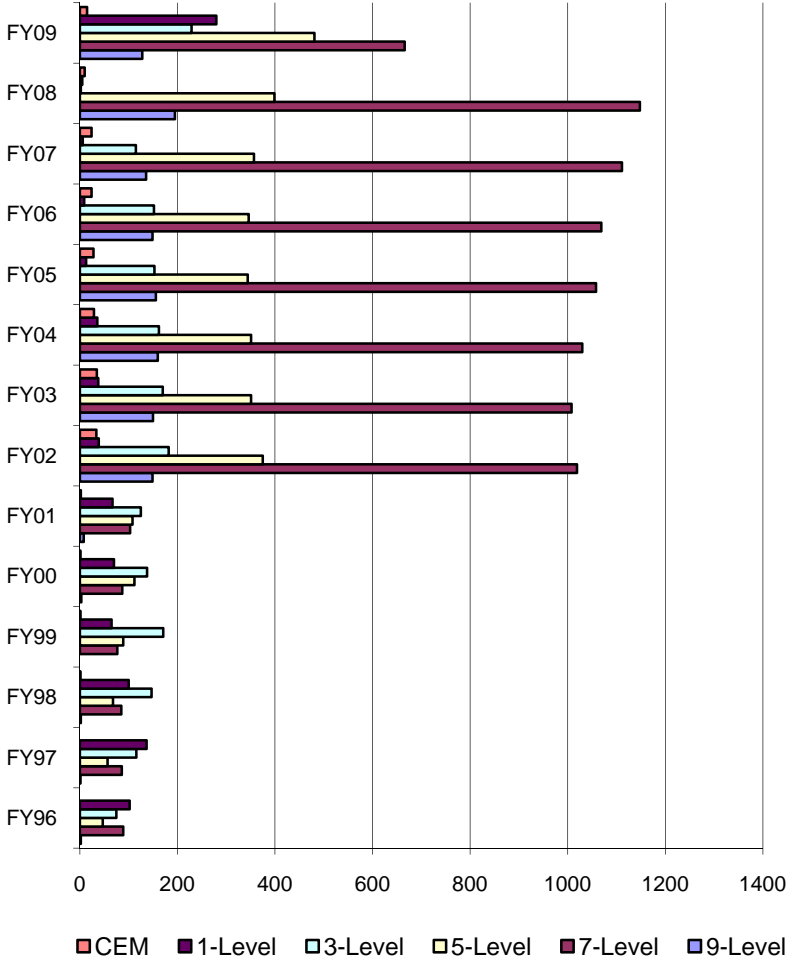
ANG Enlisted Skill Levels by Career Field – Medical, FY96 – FY09

Source: NGB/A1



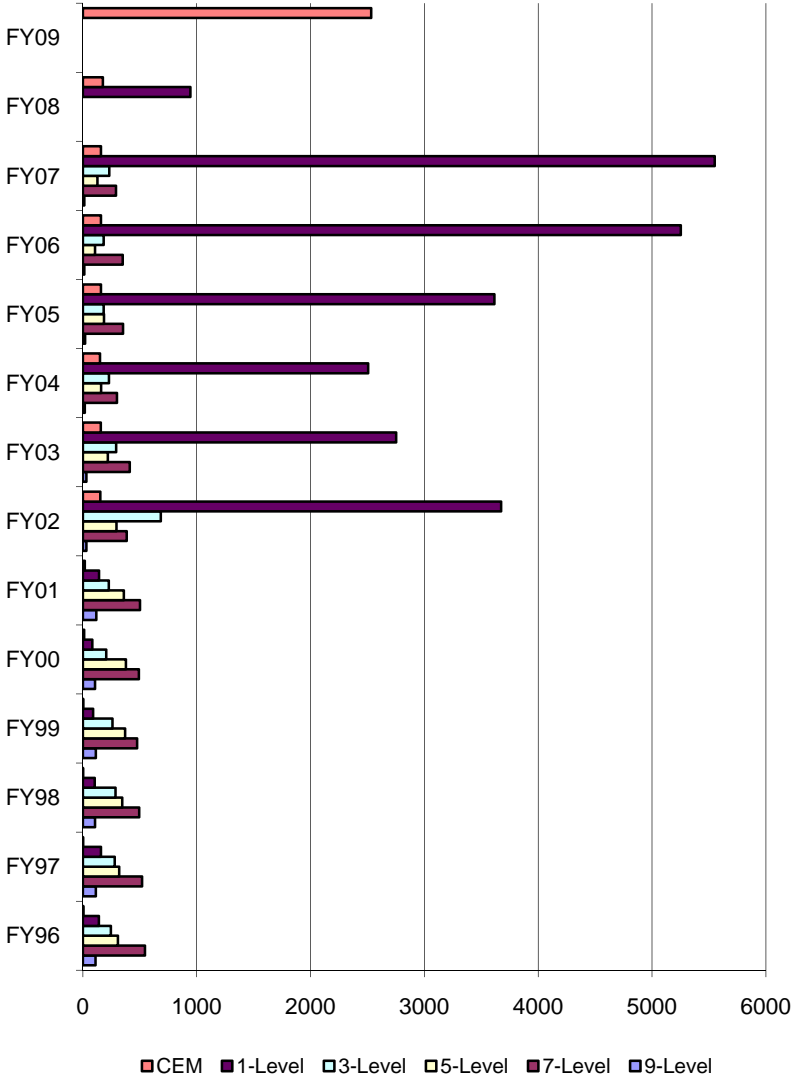
ANG Enlisted Skill Levels by Career Field – Professional, FY96 – FY09

Source: NGB/A1



ANG Enlisted Skill Levels by Career Field – Special Duty/Other, FY96 – FY09

Source: NGB/A1



Selected Reserve Strength by State

Selected Reserve Strength by State

Source: OASD(RA)

STATE	ARNG	USAR	USNR	USMCR	ANG	USAFR	USCGR	TOTAL
ALABAMA	11282	5355	382	687	2299	1293	159	21457
ALASKA	1885	375	85	37	1963	201	50	4596
ARIZONA	5297	2644	959	564	2570	1152	2	13188
ARKANSAS	8548	2262	205	164	1926	170	0	13275
CALIFORNIA	16920	13518	9579	4704	4586	7677	934	57918
COLORADO	3669	3041	889	429	1488	2478	13	12007
CONNECTICUT	3226	1186	402	226	1088	3	113	6244
DELAWARE	1496	342	114	145	1046	1647	1	4791
WASH., D.C.	1300	1525	1894	383	1157	179	128	6566
FLORIDA	10005	9935	5328	1250	2001	5169	1045	34733
GEORGIA	11060	9563	1898	1094	2751	2843	115	29324
GUAM	1108	580	17	0	445	274	0	2424
HAWAII	2814	2623	686	78	2323	584	129	9237
IDAHO	3442	677	146	101	1485	30	0	5881
ILLINOIS	10160	6188	2749	1339	3028	1393	93	24950
INDIANA	12927	3487	358	592	1864	1457	7	20692
IOWA	7382	2556	159	186	2052	0	6	12341
KANSAS	5493	3198	154	208	2083	455	27	11618
KENTUCKY	7299	4177	286	256	1183	2	82	13285
LOUISIANA	9376	2617	1970	1066	1554	1675	197	18455
MAINE	2124	507	915	132	1143	0	92	4913
MARYLAND	4948	5066	2011	410	1804	1762	214	16215
MASSACHUSETTS	6320	3033	342	829	2000	2485	500	15509
MICHIGAN	9280	3377	1123	1143	2650	14	165	17752
MINNESOTA	11419	3389	711	434	2380	1360	35	19728
MISSISSIPPI	9961	2143	868	158	2589	1579	134	17432
MISSOURI	8957	5477	1499	3621	2727	1128	102	23511

STATE	ARNG	USAR	USNR	USMCR	ANG	USAFR	USCGR	TOTAL
MONTANA	2676	790	155	64	1018	35	0	4738
NEBRASKA	3800	1812	354	192	1014	325	16	7513
NEVADA	2811	903	425	216	1113	426	2	5896
NEW HAMPSHIRE	1825	866	118	169	980	1	19	3978
NEW JERSEY	6065	4443	912	586	2323	2643	170	17142
NEW MEXICO	3087	677	288	74	972	134	0	5232
NEW YORK	10334	8846	1954	1864	6056	1293	553	30900
NORTH CAROLINA	10288	6782	1183	711	1566	2113	223	22866
NORTH DAKOTA	3227	279	92	43	971	33	0	4645
OHIO	11059	5439	1433	991	5365	3855	298	28440
OKLAHOMA	7814	3038	595	356	2356	1708	11	15878
OREGON	6383	525	576	341	2229	113	143	10310
PENNSYLVANIA	15329	8202	2078	1739	4197	1347	170	33062
PUERTO RICO	7159	4261	342	0	1232	1	47	13042
RHODE ISLAND	2115	357	589	149	1215	0	46	4471
SOUTH CAROLINA	9796	4462	817	443	1209	2394	163	19284
SOUTH DAKOTA	3356	352	128	0	1037	22	0	4895
TENNESSEE	10659	4253	1394	754	3632	12	53	20757
TEXAS	19240	17084	5956	3006	3126	6808	401	55621
UTAH	5359	2586	407	265	1465	1368	0	11450
VERMONT	2687	202	48	0	971	0	18	3926
VIRGIN ISLANDS	759	0	0	0	65	0	6	830
VIRGINIA	7918	7248	5747	1276	1671	1514	614	25988
WASHINGTON	6179	5617	2283	547	2032	2467	498	19623
WEST VIRGINIA	4499	1953	128	276	2325	1	26	9208
WISCONSIN	7616	4976	598	545	2220	1	104	16060
WYOMING	1812	77	74	0	1172	33	0	3168
OVERSEAS	0	1868	1720	12	5	360	33	3998
SHIPS	0	0	797	0	0	0	0	797
UNKNOWN	0	910	998	2783	0	9	0	4700
TOTAL	361550	197649	67918	37638	107722	66026	7957	846460