

Our Goal Is Hearing Conservation

Our staff is here to assist you with your hearing needs. We do hearing exams, fit hearing protection, and provide education services. We have two 8 person sound resistant booths carefully calibrated to provide accurate hearing screenings. There is also an active duty Audiologist on staff if further referral is needed.

Our ultimate goal is to document individual hearing ability to ensure fitness for duty and to provide/recommend appropriate hearing protection compatible with hearing ability for each individual's noise hazard duties.



BE AWARE OF THE DANGERS!



**Monday-Friday Morning
Walk-In Hours
0630am to 0845am
Physicals and Sick Call

1000am to 1030am
SRP Testing**

***Monday-Thursday Afternoons*
Reserved for unit readiness testing.

Friday Afternoons
Reserved for STS Follow-Up Ap-
pointments**

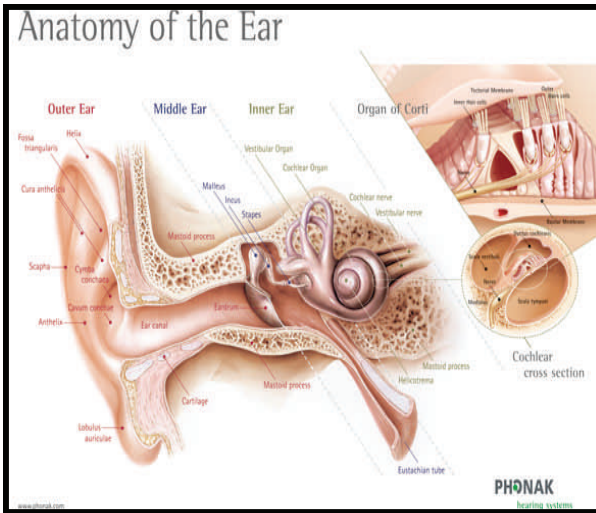
**LaPointe
Hearing Conservation
and
Audiology Clinics**

**Building 5979
Dessert Storm Avenue
Fort Campbell, KY
42223**



**Telephone
(270) 956-0305**

The Hearing Conservation Program



Follow-up Screenings:

At your follow-up screening, you will be tested in the same way as the previous screening. If your follow-up screening returns to the baseline and indicates good hearing, your evaluation is complete until the following year. Hearing screenings are required annually if you are routinely noise exposed.

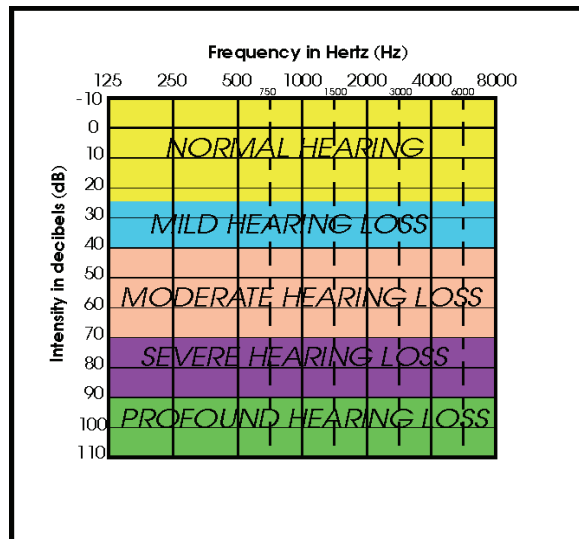
Audiology Diagnostic Exam:

If your screening indicates an STS or a hearing problem, you will be referred to see the Audiologist for a one on one test. This appointment will take about 45 minutes. Keeping this appointment is also very important because the audiologist has a limited number of appointments available each day.

Reading your audiogram:

Below is a chart that explains your personal audiogram. When you have completed your screening you will be given a copy of your audiogram. The top line of numbers records the screening you just completed. The numbers represent your hearing thresholds in decibels (dB) at each frequency (Hz). The second line of numbers records your baseline test. The date of each screening is to the left of the numbers.

As you can see below, normal hearing is -10 to 25 dB, mild hearing loss is 30 to 40 dB, moderate hearing loss is 45 to 55 dB, moderately severe is 60 to 70 dB, severe hearing loss is 75-85, and profound hearing loss is 90+ dB.



Making sure you have the hearing protection you need is our ultimate goal!

We want to do our best to prevent you from losing your hearing.

We can prevent hearing damage, but once the damage is done, it cannot be reversed!

Let's work together to make sure everyone wears the proper protection for their job.

If you need better or replacement hearing protection, please ask us while you are here. Or just stop by any afternoon and we will gladly fit you with proper protection.

Initial Hearing Evaluation:

At your initial visit to LaPointe Hearing Conservation (HC) clinic we will establish a baseline (DD2215) unless you already have one at the data repository.

If you already have a baseline, an annual screening (DD2216) will be conducted. These results will be compared to your baseline. The system automatically informs the Audiology Tech of any changes in your hearing from your baseline, also known as an STS. (Standard Threshold Shift).

If an STS exists, you will be given written instructions and you will be asked to schedule a follow-up screening. These appointments are scheduled on Friday afternoons. The follow-up screening must be completed within 29 days or you must start the process over. Making and keeping your appointments is very important.

Monday-Thursday afternoons our facility is available for unit readiness screenings. Your unit representative must schedule this block of time, and also provide a DOEHS-HC certified operator to conduct the testing. Unit reps, please stop by in the afternoons to schedule this time with us.