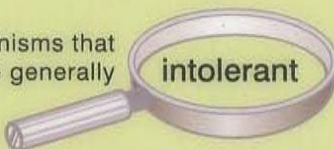


Kids in the Creek

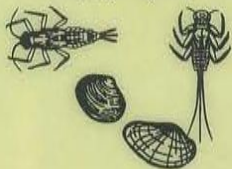
Aquatic organisms that
are generally



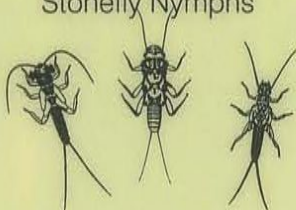
intolerant

to water pollution.

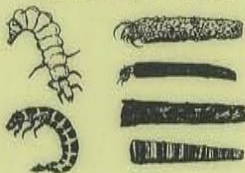
Mayfly Nymphs



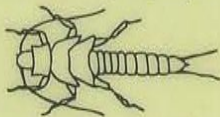
Stonefly Nymphs



Caddisfly Larvae



Salmonfly Nymph



Dobsonfly Larva



Riffle Beetle



Penny Beetle Larva



We can tell how healthy a stream has been over time by studying the diversity of organisms that live in it.

Aquatic organisms that are generally **tolerant** to water pollution.



Crane-fly Nymph



Damselfly Nymph



Crayfish



Midge



Dragonfly Nymph



Sideswimmer



Leech



Snail



Aquatic Worms



Mosquito Larva



Bivalves

