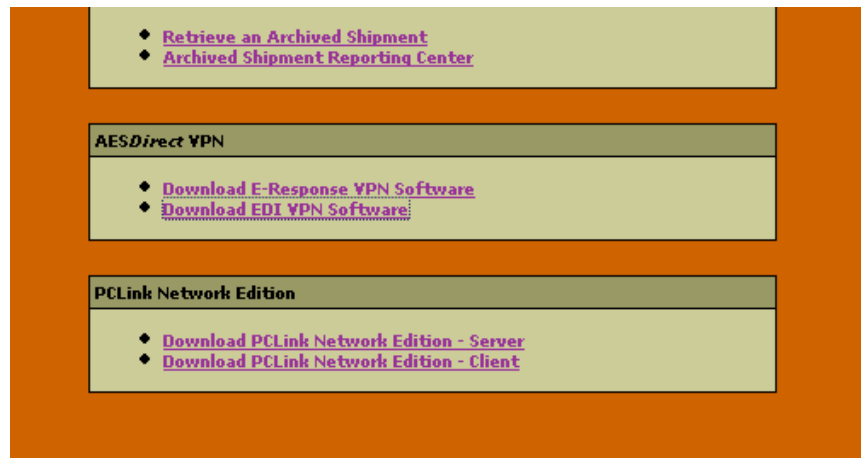


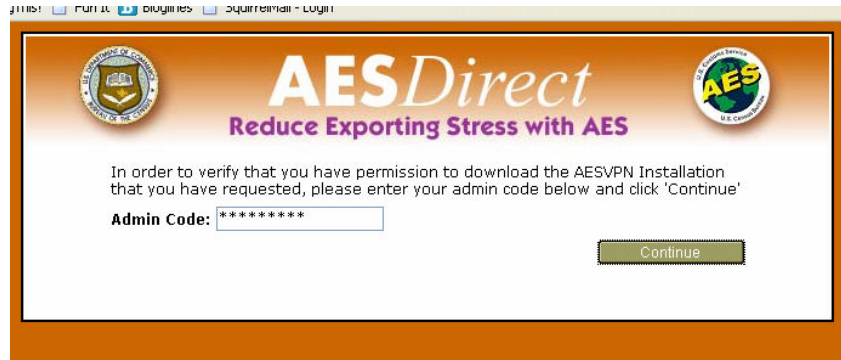
## INSTALL AND USE AES*DIRECT* EDI VPN

*How to Download the AESDirect EDI VPN Software Installer*

Log In to AES*Direct*.

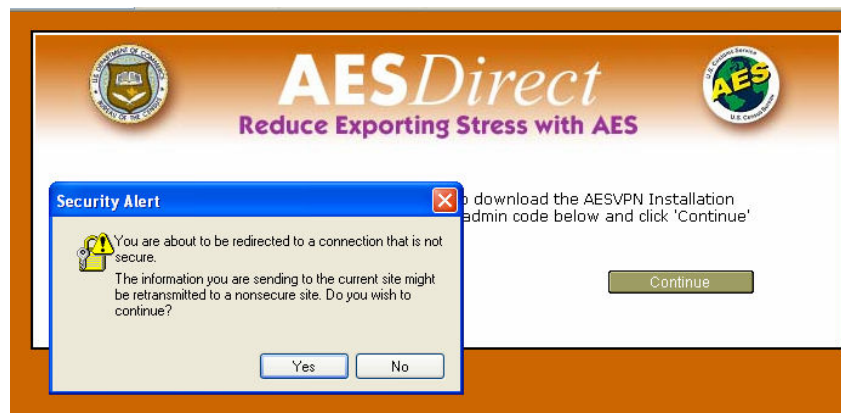


Click the 'Download EDI VPN Software' link under **AESDirect VPN** from the AES*Direct* main page.



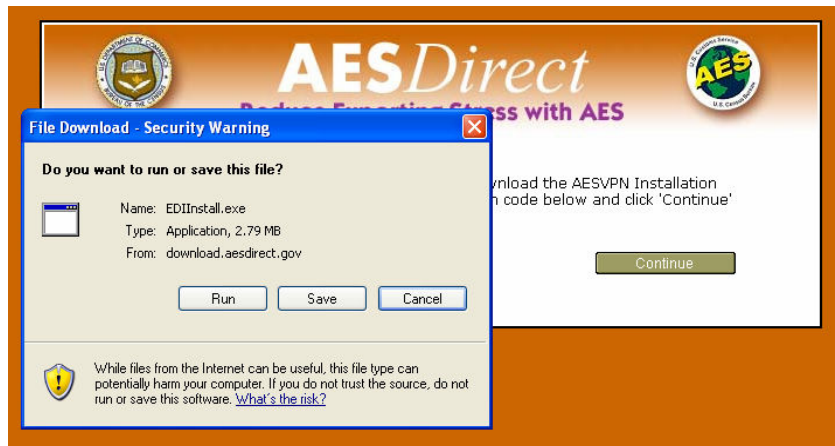
To verify that you have permission to install the EDI VPN software, enter the 'Admin Code' for your account. This code can be retrieved from your Account Administrator.

Click 'Continue'



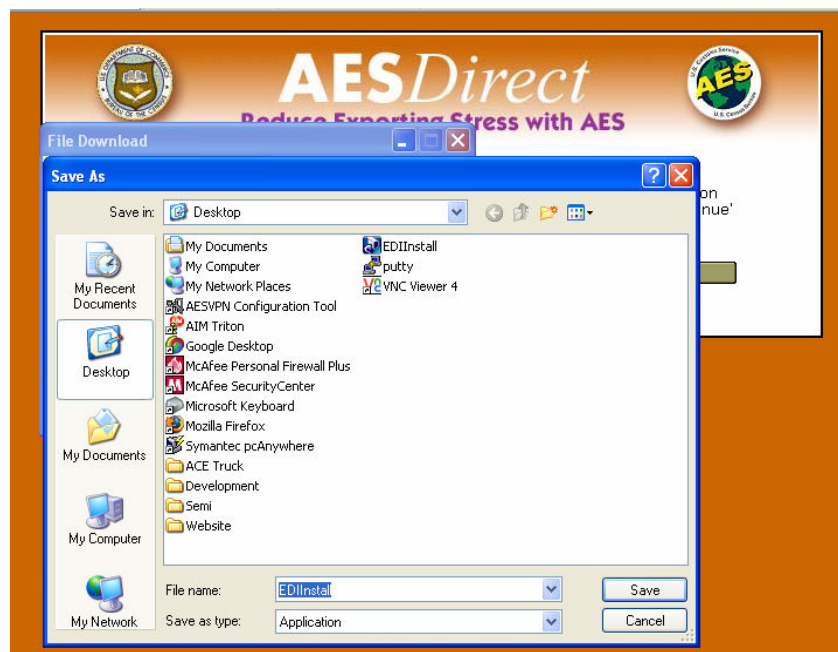
A **Security Alert** window will open. While *AESDirect* maintains a secure connection, the EDI VPN software is maintained outside of *AESDirect*. It is, however, safe.

Click 'Yes.'



A **File Download: Security Warning** window will open. It should ask 'Do you want to run or save this file?' This file should be saved to your local machine in a directory or folder where it will be easy to locate.

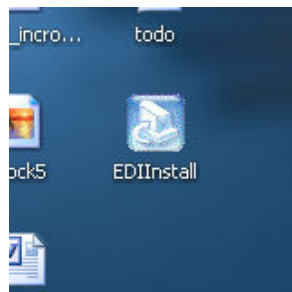
Click 'Save.'



The **Save As** window will present you the opportunity to save the EDI VPN software, called **EDIInstall**, where you can easily locate it. It is recommended, however, that you save it to your Windows Desktop.

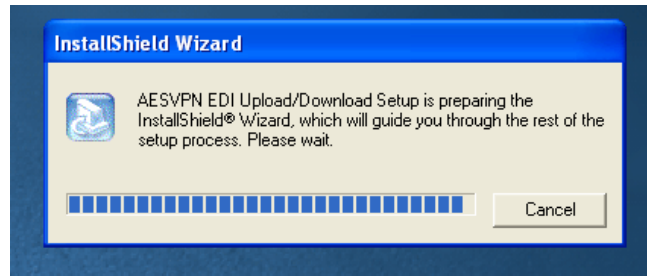
Click 'Save.'

## *How to Install the AESDirect EDI VPN Software*

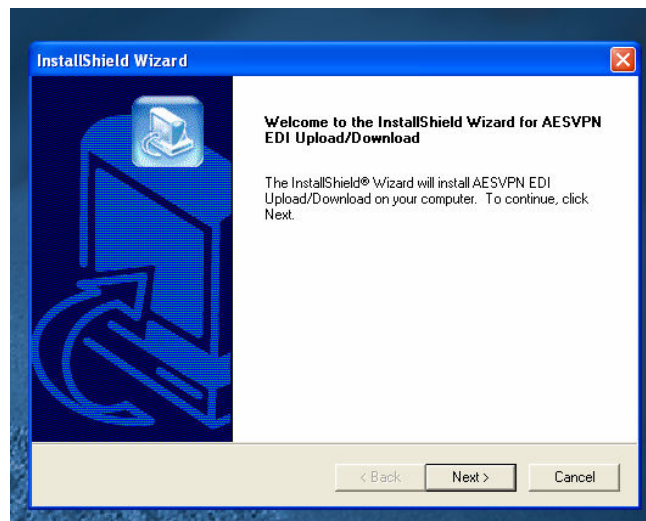


Once saved, find the file. In this example, **EDIInstall** has been saved to the Windows Desktop.

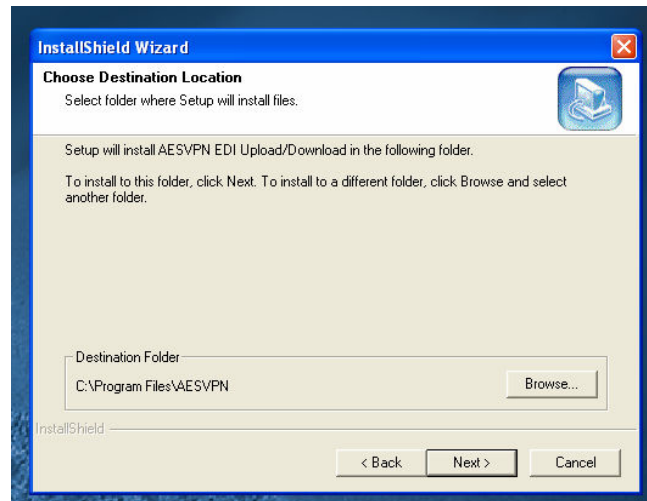
Double click 'EDIInstall' to begin installation.



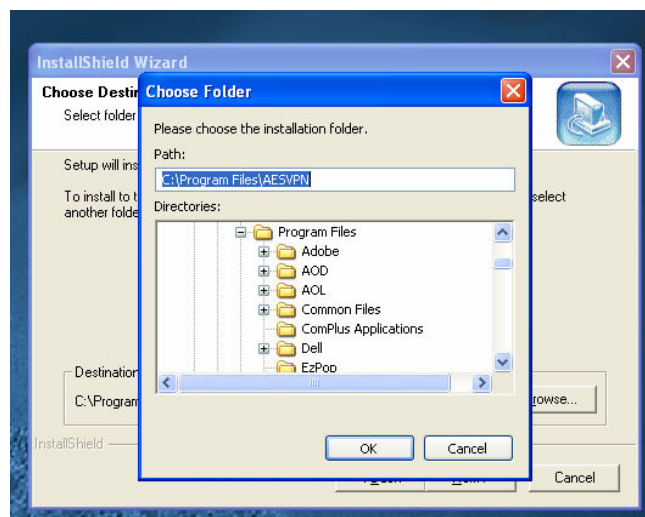
Preparation of the InstallShield Wizard should only take a few moments, depending on the speed of your machine.



Click 'Next.'

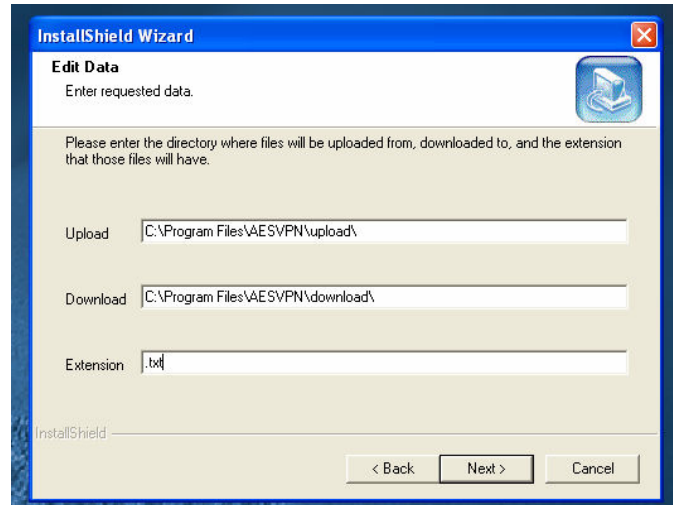


You must choose a destination installation location for the EDI VPN software. The default is 'C:\Program Files\AESVPN'. It is recommended that you install the Application to this directory.



However, if you wish to install it in another location, click 'Browse...'. The **Choose Folder** window will open. You can navigate your Windows folders to a destination to install the application. Click 'OK'

Click 'Next' once you have chosen a destination.



Enter the path for 'Upload' files to be stored

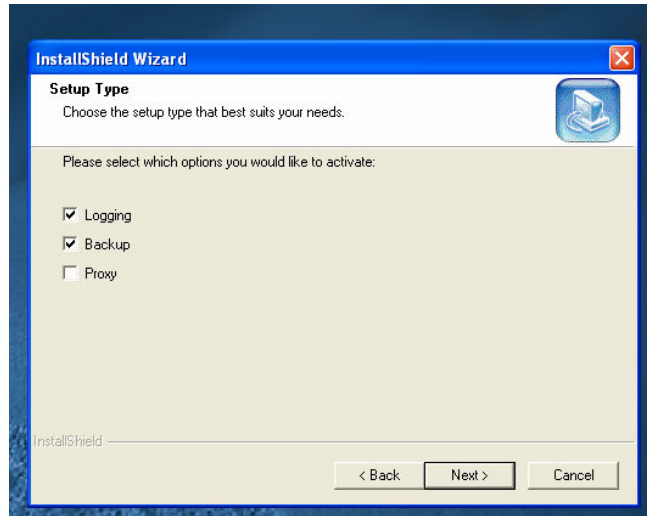
Enter the path for 'Download' files to be stored.

Enter an 'Extension' for those files.

**TO THOSE NETWORKED SHARED DRIVES. IF YOU ARE USING A UNIVERSAL NAMING CONVENTION (UNC) PATH, THESE SERVICES WILL NEED TO BE RUN AS A USER THAT HAS FULL ACCESS**

Click 'Next.'

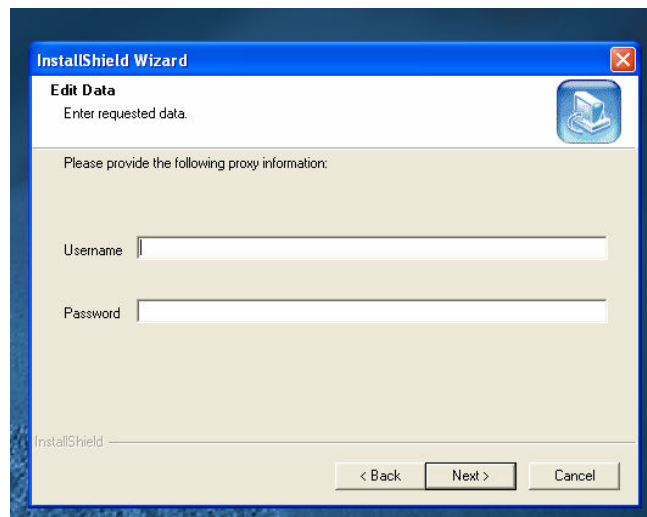




Setup Type gives you the opportunity to customize your installation. Check the box next to:

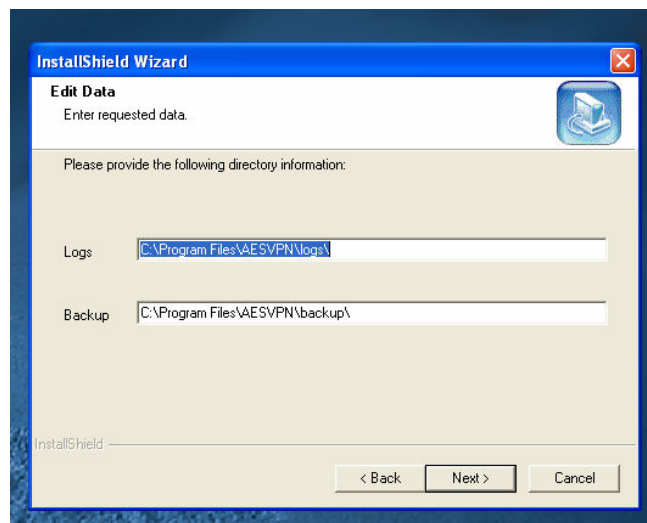
- 'Logging' if you wish keep a log of all activity
- 'Backup' if you wish to keep a backup of all data
- 'Proxy' if your computer network operates behind a Proxy Server

Click 'Next.'



If you checked Proxy, Enter a 'Username' and 'Password' for the Proxy Server. If you don't know the Proxy information, consult your IT Department.

Click 'Next.'



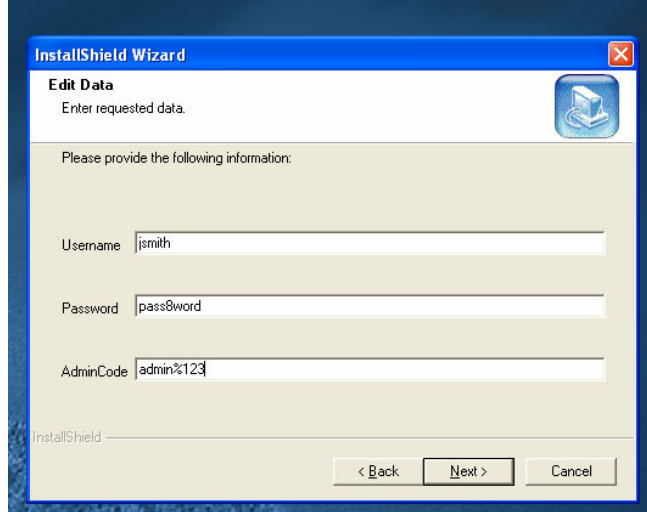
If you checked 'Logs' or Backups':

Enter the path for 'Logs' files to be stored. A default is given.

Enter the path for 'Backup' files to be stored. A default is given

**IF YOU ARE USING A UNIVERSAL NAMING CONVENTION (UNC) PATH, THESE SERVICES WILL NEED TO BE RUN AS A USER THAT HAS FULL ACCESS TO THOSE NETWORKED SHARED DRIVES.**

Click 'Next.'

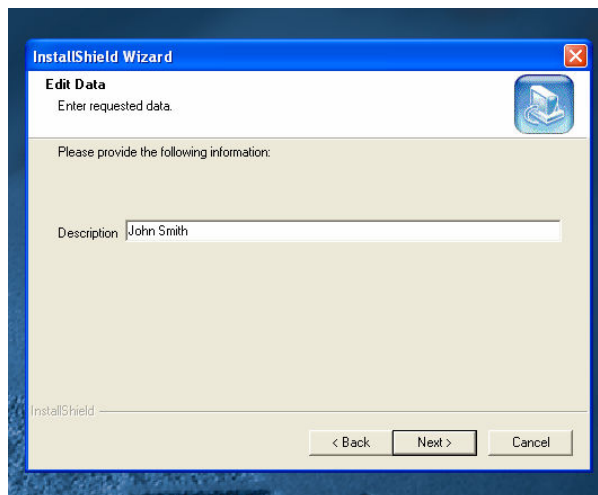


Enter your *AESDirect* 'Username'

Enter your *AESDirect* 'Password'

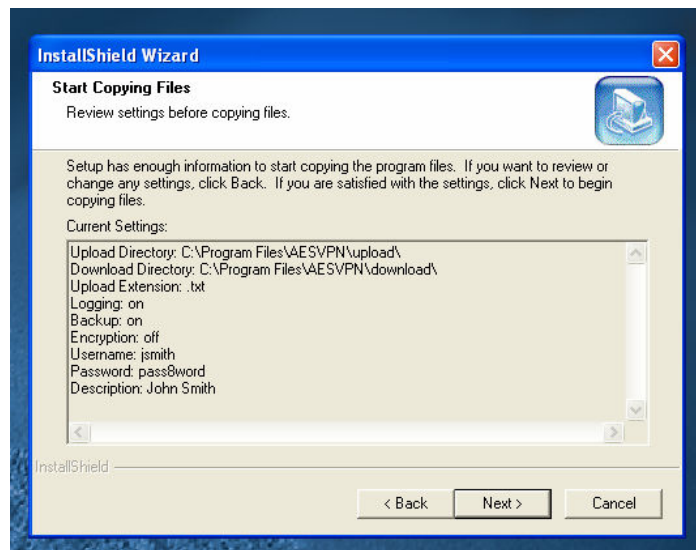
Enter your organization's 'AdminCode'

Click 'Next.'



Enter a 'Description' for the software. The AES VPN software can be installed on many computers. Use a Description that strongly identifies this installation with the specific computer or users. For instance, if the Application is being installed on John Smith's computer, you may want to describe the installation as 'John Smith.' Use something that is meaningful to your organization.

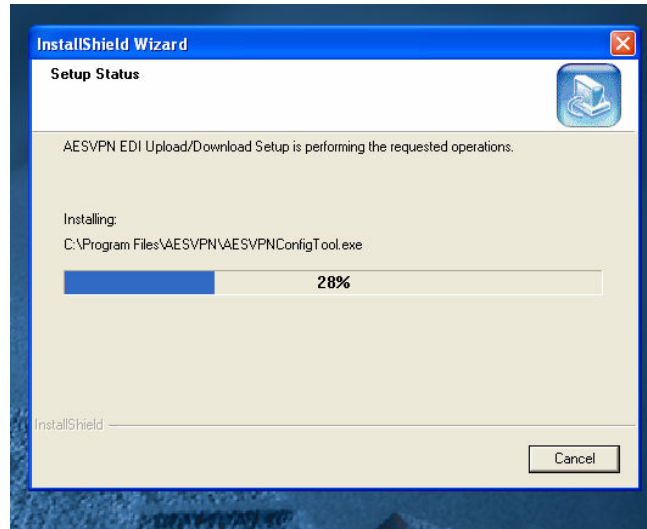
Click 'Next.'



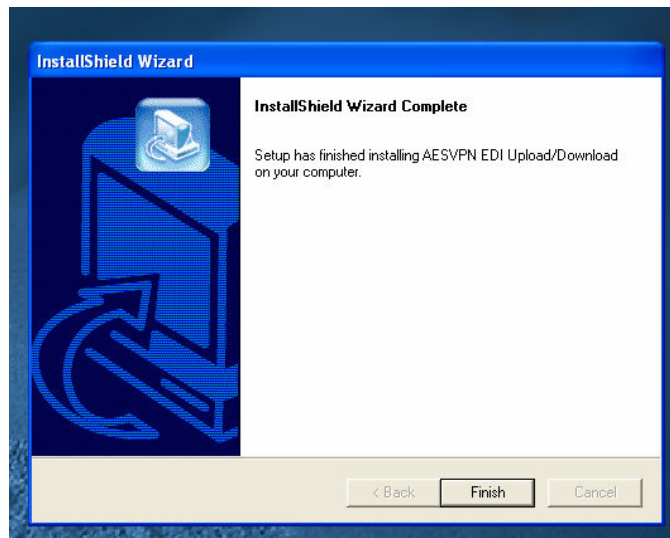
The **Start Copying Files** screen will give you the opportunity to review the Setup.

If you need to make changes, click 'Back' to the point you would like to change. All subsequent data will need to be reentered.

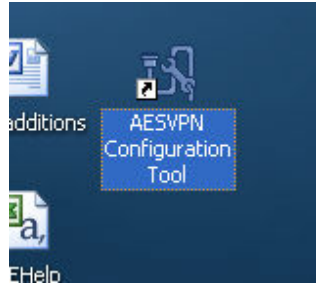
If the settings meet your requirements, click 'Next.'



The AESVPN EDI software will be installed.

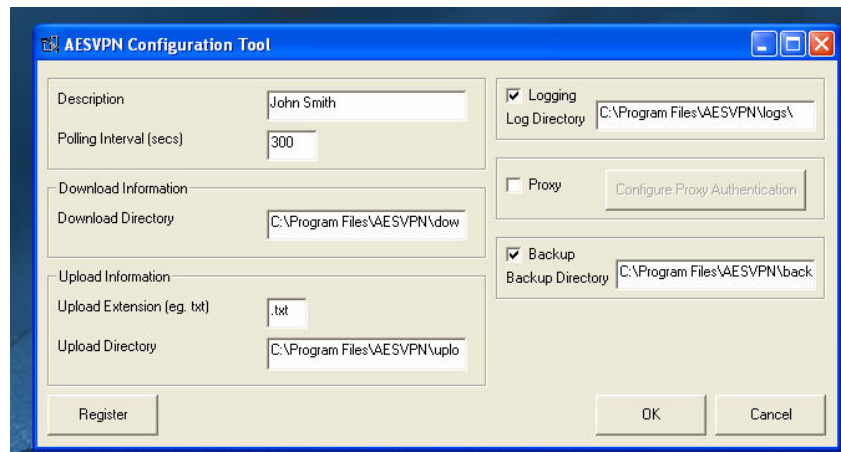


When the Installation has completed, click 'Finish'.



Icons for the AESVPN Configuration Tool will be included both in your Start menu and on your Desktop.

To view the AESVPN Configuration, Double Click the 'AESVPN Configuration Tool' Icon on your desktop.



Here, you can make changes to your original settings, if necessary.

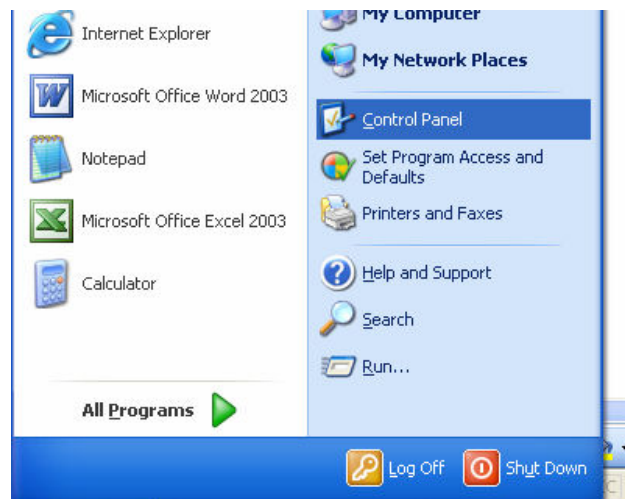
Click 'OK' to close and retain any changes.

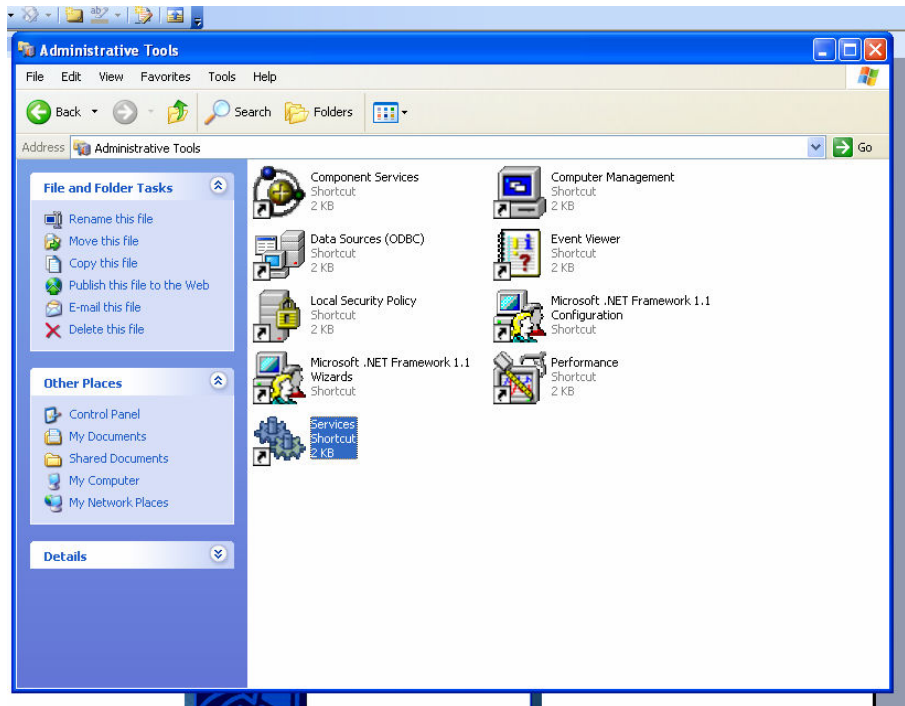
Click 'Cancel' to close without retaining changes.

### *How to Start the AES VPN Upload/Download Services*

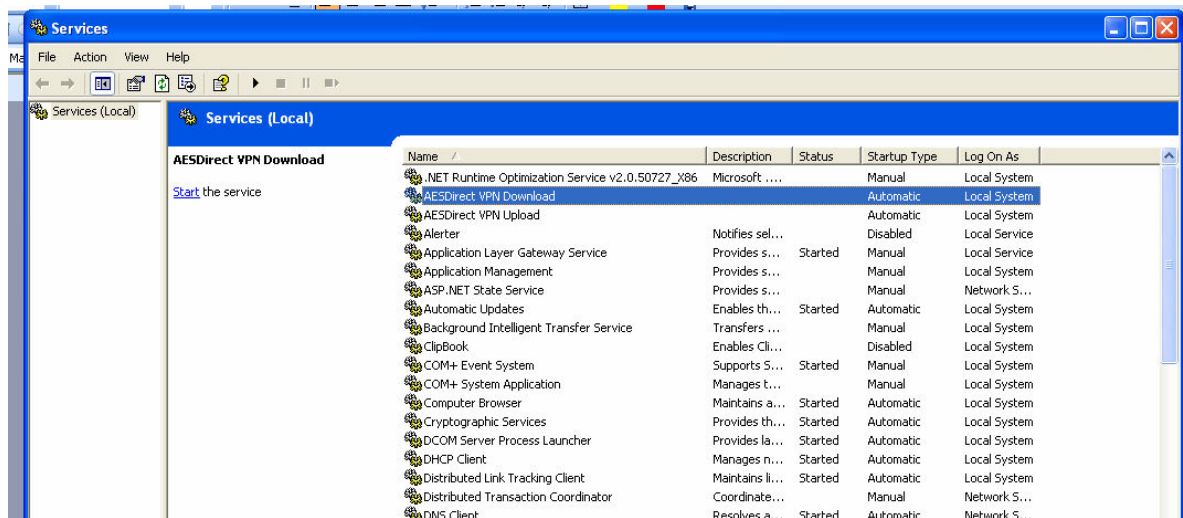
As a default, *AESDirect* VPN Upload/Download services do not start automatically. Check to see if they are running in Windows XP:

Control Panel → Administrative Tools → Services



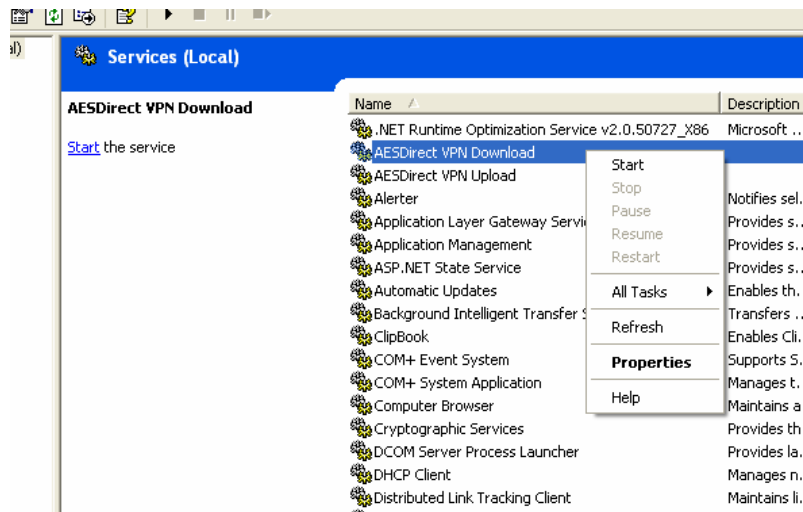


Double click 'Services'





All **Local Services** should be listed. The *AESDirect* VPN Download/Upload services should be listed near the top. Under the column **Status** you should see nothing listed for either service. Both services need to be started.



To begin the *AESDirect* VPN Upload/Download services, either:

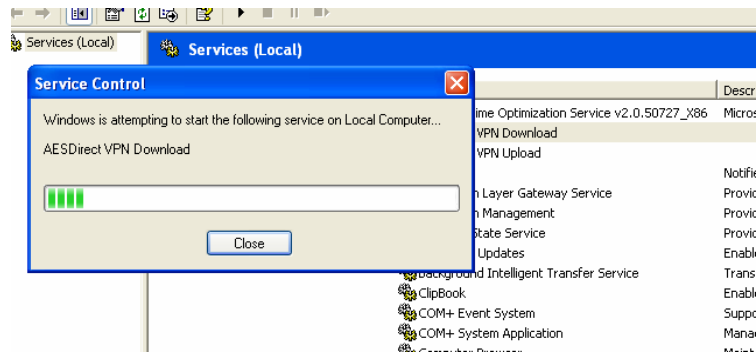
Left click the Service name.

Click 'Start the Service' in the left hand column.

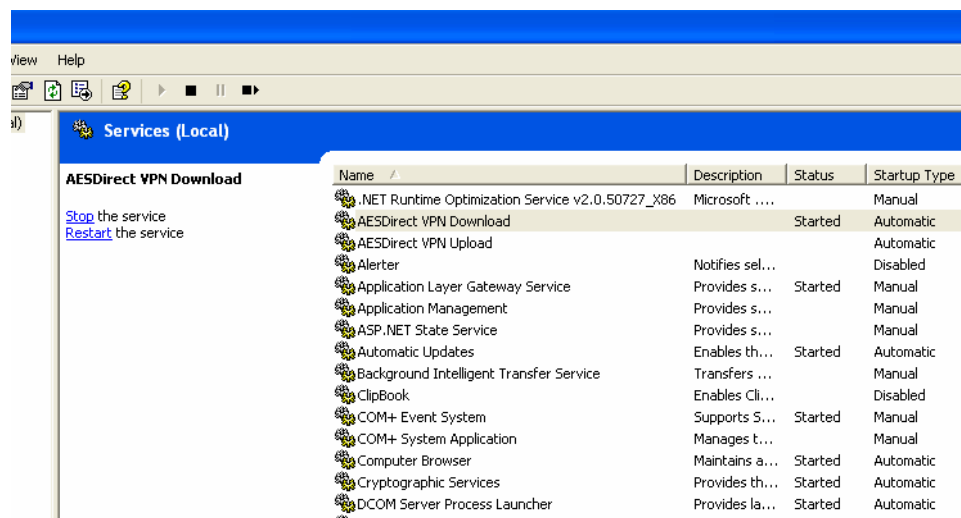
or

Right click the Service name to open the menu.

Select and left click 'Start.'



**Service Control** will start the service.



The AESDirect VPN Download Service will now be active. Repeat the same actions for the AES Direct VPN Upload Service.

To stop the Service, left click the name of the service.

Click 'Stop the service' in the left hand column.

or

Right click the Service name to open the menu.

Select and left click 'Stop.'

To restart the Service, left click the name of the service

Click 'Restart the service' in the left hand column.

or

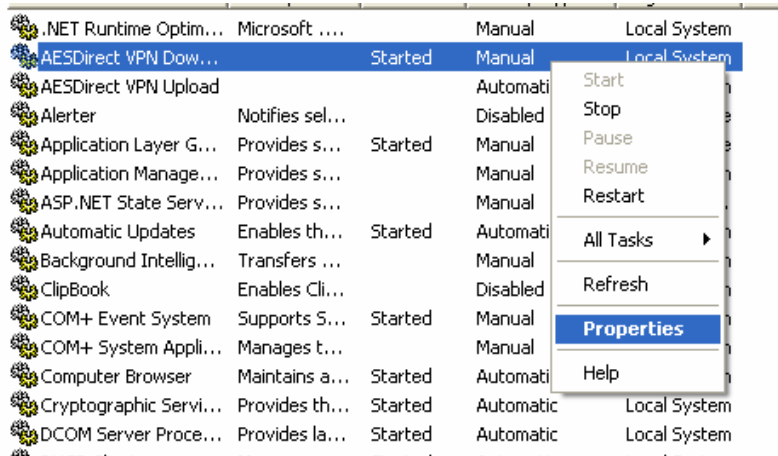
Right click the Service name to open the menu.

Select and left click 'Stop.'

*How to Start the AESDirect VPN Upload/Download Services Automatically at Startup*

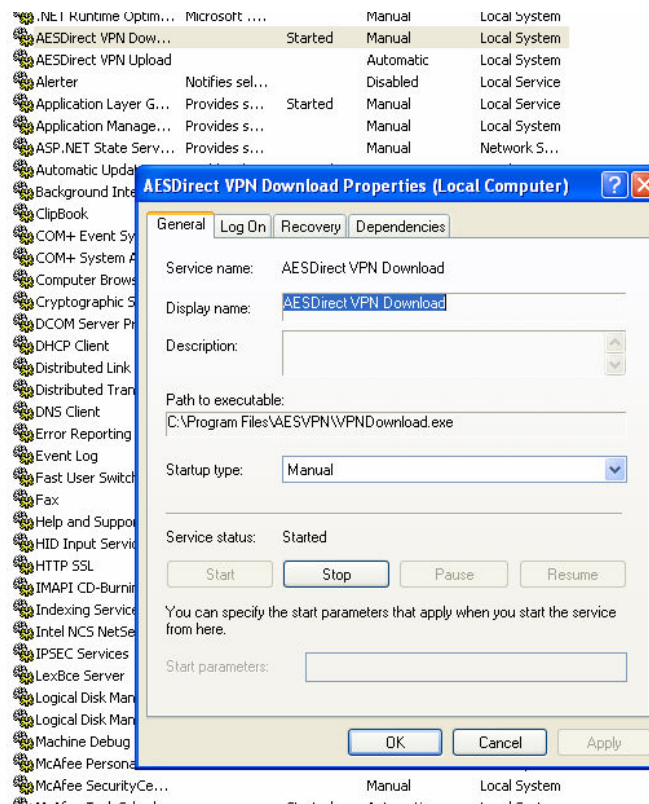
By default, the AESDirect VPN Upload/Download Services do not automatically start at Windows Startup. You must manually start it through the Service menu each time you log in. However, it can be configured to start automatically.

To start the AESDirect VPN Upload/Download Services automatically from **Services**

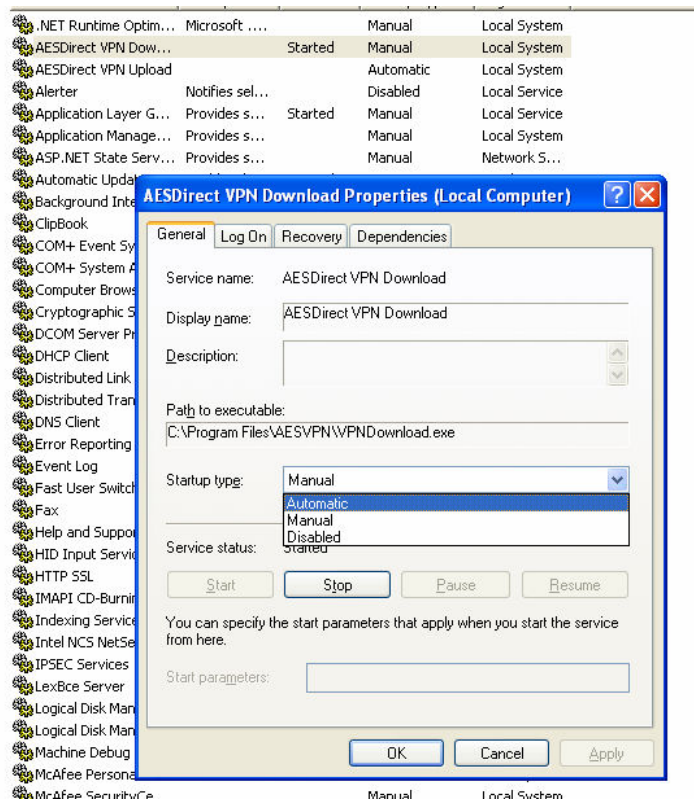


Right Click the Service to open the menu.

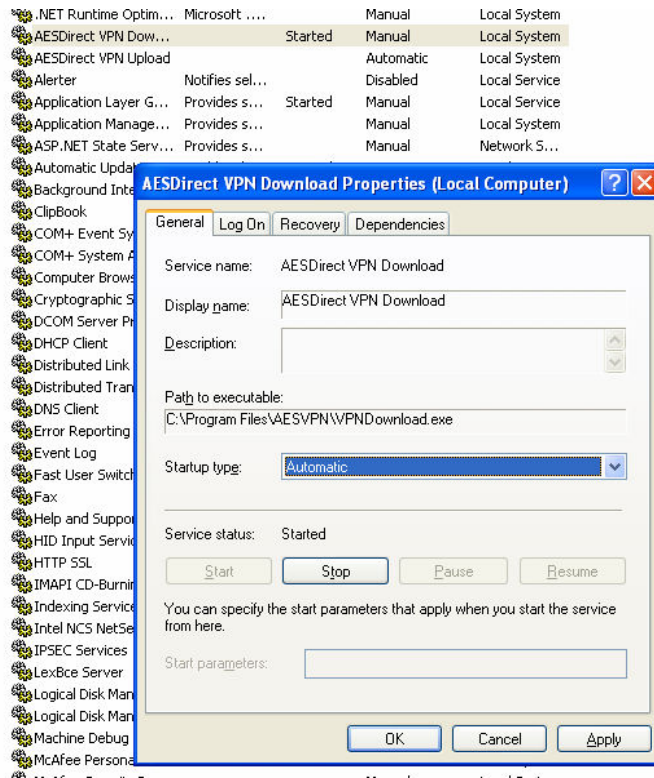
Select and Left Click 'Properties'



In this case, the **AESDirect VPN Download Properties** window will open with a summary of the Services current status.



Under the 'Startup type' dropdown menu, Select 'Automatic.'



Click 'Apply.'

Click 'OK.'

Name	Description	Status	Startup Type	Log On As
.NET Runtime Optim...	Microsoft ...		Manual	Local System
AESDirect VPN Dow...		Started	Automatic	Local System
AESDirect VPN Upload			Automatic	Local System
Alerter	Notifies sel...		Disabled	Local Service
Application Layer G...	Provides s...	Started	Manual	Local Service
Application Manage...	Provides s...		Manual	Local System
ASP.NET State Serv...	Provides s...		Manual	Network S...
Automatic Updat...	Enables th...	Started	Automatic	Local System

In **Services**, under **Startup Type**, *AESDirect* VPN Download should now read 'Automatic.'

If you wish to return it to 'Manual,' follow the direction above to select it from the **Startup** type dropdown menu in **Properties**.

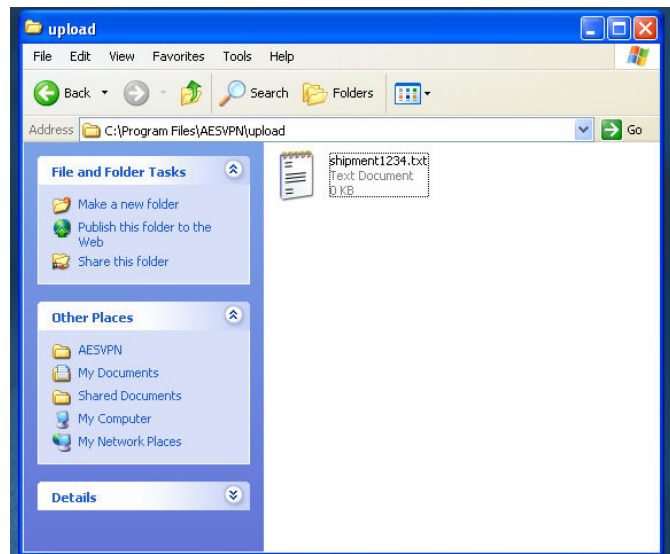
Follow these directions to make the same change to *AESDirect* VPN Upload.



## *How to Use AESDirect EDI VPN Software*

Once the *AESDirect* EDI VPN Software has been installed on your computer and has been started in **Service**, you are now ready to transmit information to and gather responses from AES.

### Upload



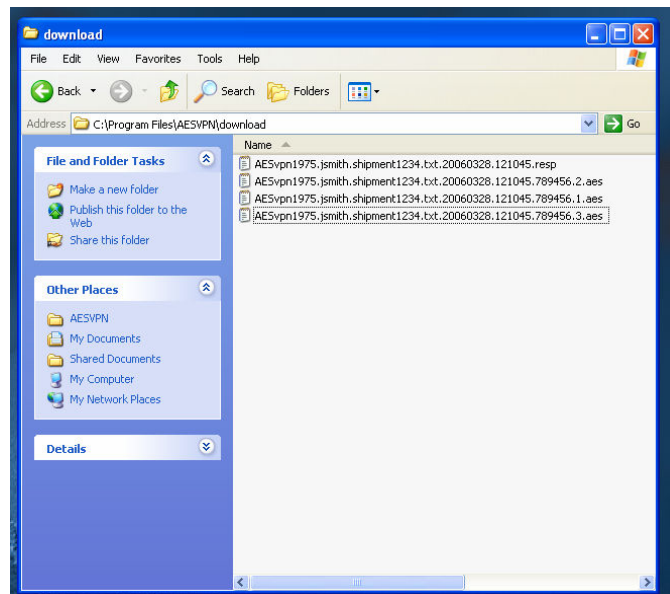
The EDI files generated by your software should be placed in the Upload directory specified during Installation. These files absolutely must have the extension that was also specified during Installation.

If an extension is not specified, or the extension is not correct, then AESDirect EDI VPN will not extract the file and may cause serious problems for your local computer.

AESDirect EDI VPN will periodically search the Upload directory for files. The software will 'pull' the files with the correct extension from the directory and send them along to *AESDirect*. These files will be deleted from the Upload directory. If you wish to keep backups of these files, make sure that you indicated that you wish to create a backup directory during installation. If you did not during Installation, you may indicate a backup directory at a later date using the AESVPN Configuration Tool.

## Download

*AESDirect*-processed EDI files will be deposited in the Download directory specified during installation. These files should be imported and processed with your in-house software.



You will receive at least two (2) Download files for each EDI file placed in the Upload directory and successfully processed:

First, you will receive an *AESDirect* EDI response. The file format will be:

**AESvpn1975.[Your EDI Username].[Original File Name].[File Extension].YYYYMMDD.HHMMSS.resp**

So, a file sent by user jsmith called shipment1234.txt, processed in *AESDirect* on March 29, 2006 at 12:10 will return a file named:

**AESvpn1975.jsmith.shipment1234.txt.20060328.121045.resp**

Second, you will receive a response directly from AES, but only if the original EDI file (shipment1234.txt) does not generate any errors. In that case, you will only receive the file from *AESDirect*.

The file format will be:

**AESvpn1975.[Your EDI Username].[Original File Name].[File Extension].YYYYMMDD.HHMMSS.[6-digit identifier code].[If more than one shipment in original EDI file, will receive a separate file, numbered sequentially].aes**

Therefore, the file jsmith would see in his Download directory from AES would be named:

**AESvpn1975.jsmith.shipment1234.txt.20060328.121045.789456 .1.aes**

If there were two or more shipments in the original EDI file, shipment1234.txt, then multiple files will be returned and numbered sequentially:

**AESvpn1975.jsmith.shipment1234.txt.20060328.121045.789456  
.1.aes**

**AESvpn1975.jsmith.shipment1234.txt.20060328.121045.789456  
.2.aes**

**AESvpn1975.jsmith.shipment1234.txt.20060328.121045.789456  
.3.aes**

**...Etc.**

These files should be maintained by you indefinitely.