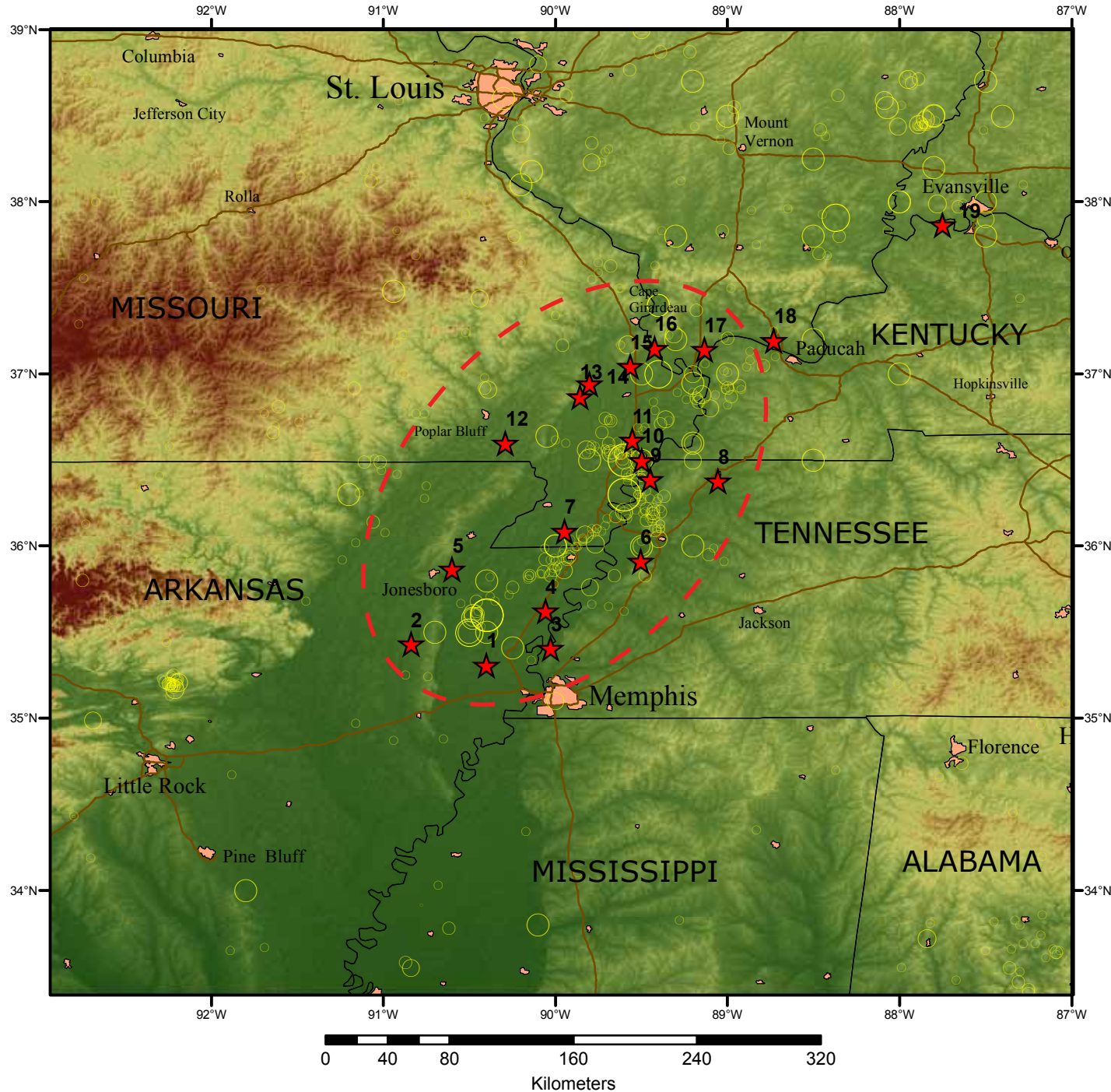


New Madrid Seismic Zone - Quaternary Fault Localities



Legend

- ★ Quaternary Fault
- Interstate
- Urban Area

Earthquake Magnitude

- 2.5 - 4.4
- 4.5 - 5.4
- 5.5 - 6.4
- 6.5 - 7.7

This map of the New Madrid seismic zone (red oval) shows earthquakes with magnitudes larger than 2.5 as yellow circles (University of Memphis and USGS Professional Paper 1527). Larger earthquakes are represented by larger circles. The red stars represent localities where Quaternary faulting, sites that are generally less than about 75,000 years old, has been detected in the subsurface, and the results published in peer-reviewed journals shown in the listing below.

1. Luzietti et al. 1992 SRL
2. Csontos et al. 2008, Geosphere
3. Cox et al. 2006, Tectonics
4. Csontos et al. 2008, Geosphere
5. Van Arsdale et al. 1995, BSSA
6. Cox et al. 2001, Geology
7. Guccione et al. 2005 GSA Bulletin
8. Cox et al. 2001, Geology
9. Russ 1979 GSA Bulletin; Kelson et al. 1996 JGR
10. Harris et al. 1999, Geophysics
11. Baldwin et al. 2005, SRL
12. Stephenson et al. 1999, BSSA
13. Stephenson et al. 1999, BSSA
14. Baldwin et al. 2006, BSSA
15. Palmer et al. 1997, SRL
16. Harrison et al. 1999, Tectonophysics
17. McBride et al. 2005, EngGeology
18. McBride & Nelson 2001, BSSA
19. Woolery 2005, BSSA

SRL- Seismological Research Letters
 BSSA- Seismological Society of America Bulletin
 JGR- Journal of Geophysical Research