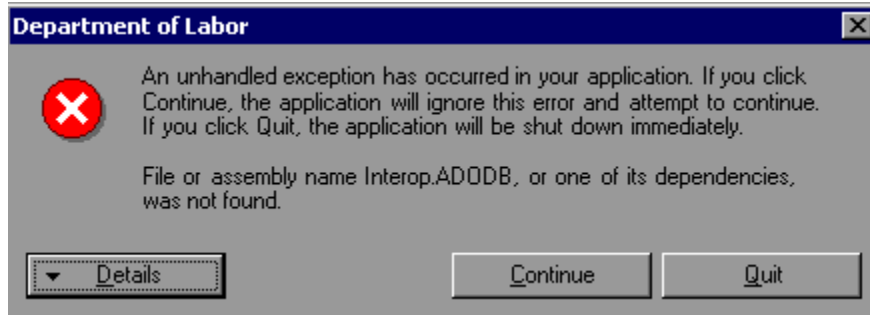


Instructions for implementing the DRVS 7.1.1 e-Submit Patch

The DRVS 7.1.1 (e-submit patch) corrects an issue in the original release of DRVS 7.1 that causes the following critical error when states try to submit their validation results to ETA:



To implement the patch, copy files in DRVS_7.1.1.zip must be copied into C:\Program Files\DRVS\WIANLX\bin through the following steps:

1. Download the DRVS_7.1.1.zip file from ETA's website (http://www.doleta.gov/performance/reporting/tools_datavalidation.cfm).
2. Double-click the zip file and extract the 3 WIANLX files into the C:\Program Files\DRVS\WIANLX\bin folder. Click "Yes to all" if asked whether you want to replace already existing files in that folder.