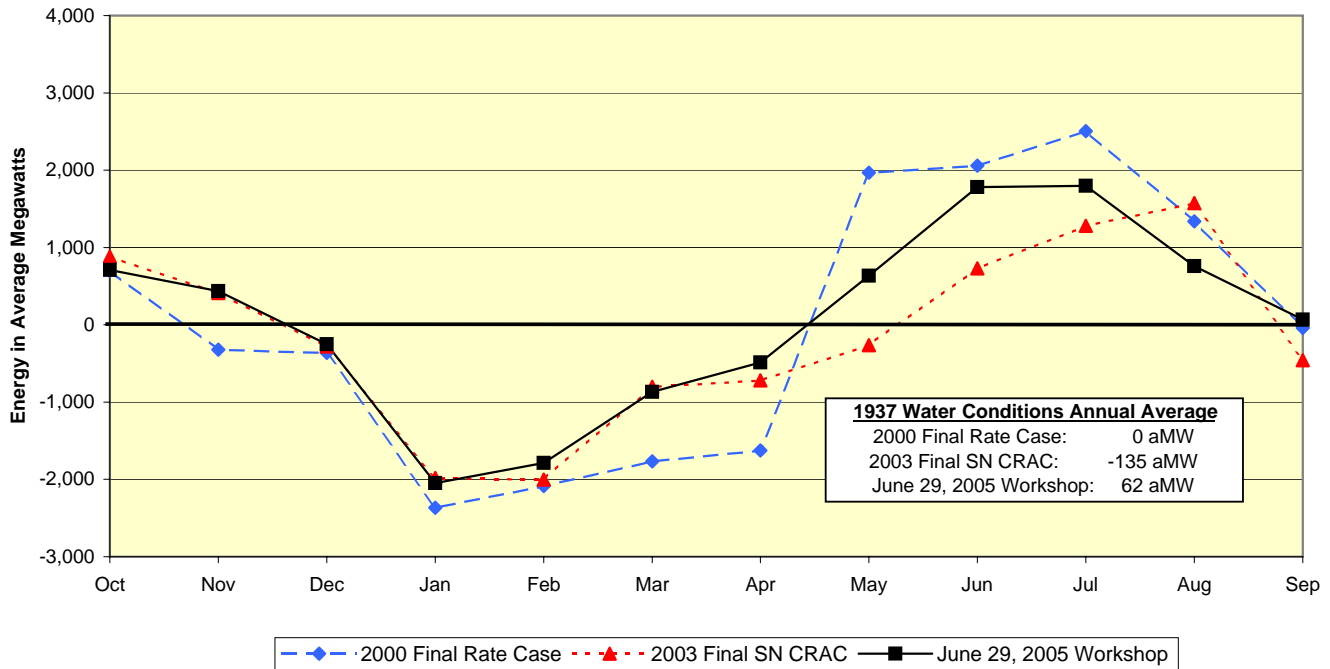


**1937 WY Avg Bar Graph comparison by month**  
**Rate Case Comparison For FY 2007**  
**1937 Water Conditions**

Energy in Megawatts	Oct	Nov	Dec	Jan	Feb	Mar	Apr	May	Jun	Jul	Aug	Sep	Average
2000 Final Rate Case	699	-322	-363	-2365	-2087	-1766	-1627	1966	2058	2505	1340	-41	0
2003 Final SN CRAC	885	411	-279	-1982	-2003	-800	-719	-263	729	1280	1574	-456	-135
June 29, 2005 Workshop	707	437	-251	-2050	-1786	-867	-486	633	1783	1799	758	69	62

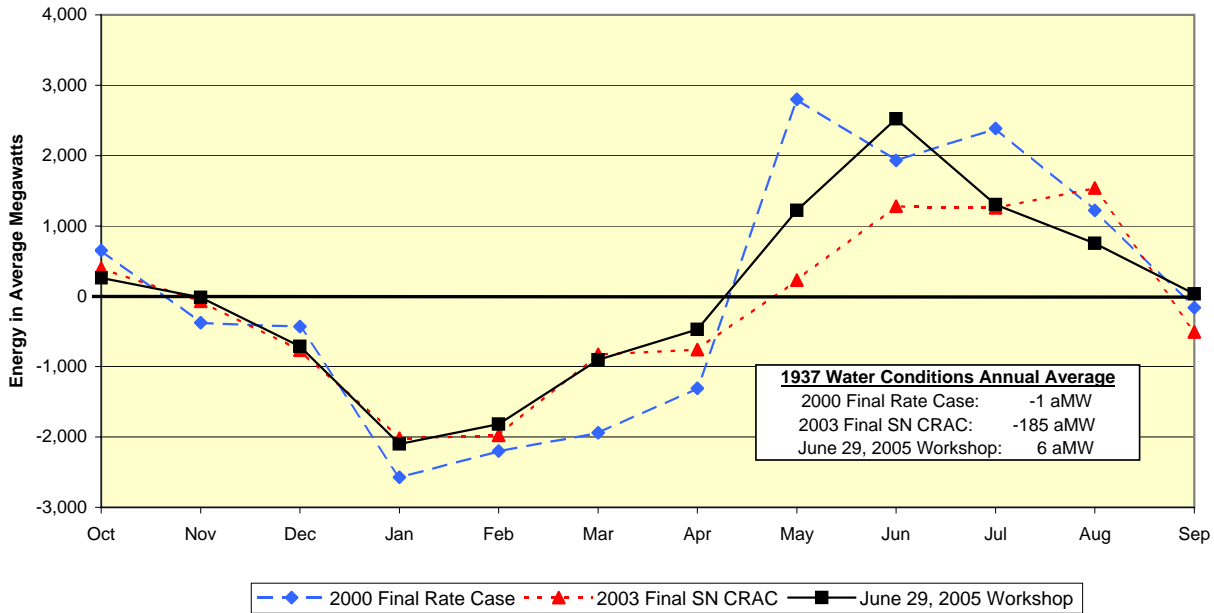
**WP-07 Power Rate Case Workshop**  
**FY 2007**  
**Federal System Energy Surplus/Deficit**  
**Under 1937-Water Conditions**



**1937 WY Avg Bar Graph comparison by month**  
**Rate Case Comparison For FY 2008**  
**1937 Water Conditions**

Energy in Megawatts	Oct	Nov	Dec	Jan	Feb	Mar	Apr	May	Jun	Jul	Aug	Sep	Average
2000 Final Rate Case	652	-378	-432	-2571	-2197	-1942	-1309	2797	1928	2385	1223	-164	-1
2003 Final SN CRAC	400	-69	-765	-2018	-1979	-825	-759	228	1281	1256	1541	-505	-185
June 29, 2005 Workshop	260	-18	-711	-2100	-1818	-904	-469	1221	2521	1305	751	32	6

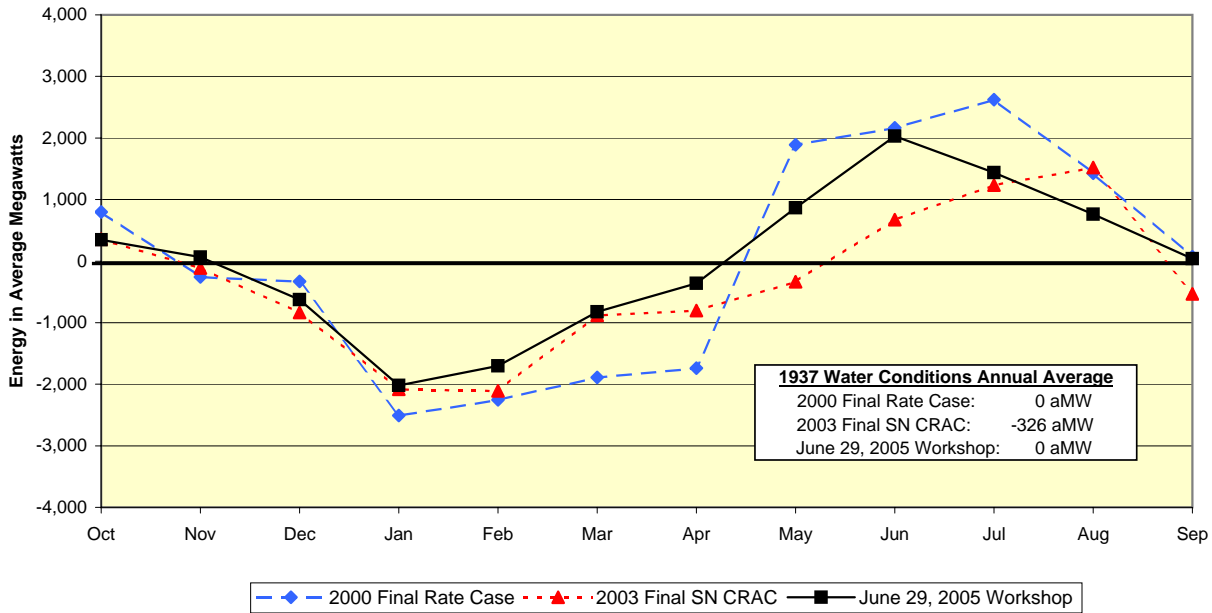
**WP-07 Power Rate Case Workshop**  
**FY 2008**  
**Federal System Energy Surplus/Deficit**  
**Under 1937-Water Conditions**



**1937 WY Avg Bar Graph comparison by month  
Rate Case Comparison For FY 2009  
1937 Water Conditions**

Energy in Megawatts	Oct	Nov	Dec	Jan	Feb	Mar	Apr	May	Jun	Jul	Aug	Sep	Average
2000 Final Rate Case	796	-257	-329	-2510	-2252	-1892	-1738	1891	2164	2624	1429	70	0
2003 Final SN CRAC	357	-113	-836	-2084	-2106	-880	-805	-337	673	1234	1518	-532	-326
June 29, 2005 Workshop	345	66	-629	-2021	-1703	-826	-361	867	2029	1435	759	37	0

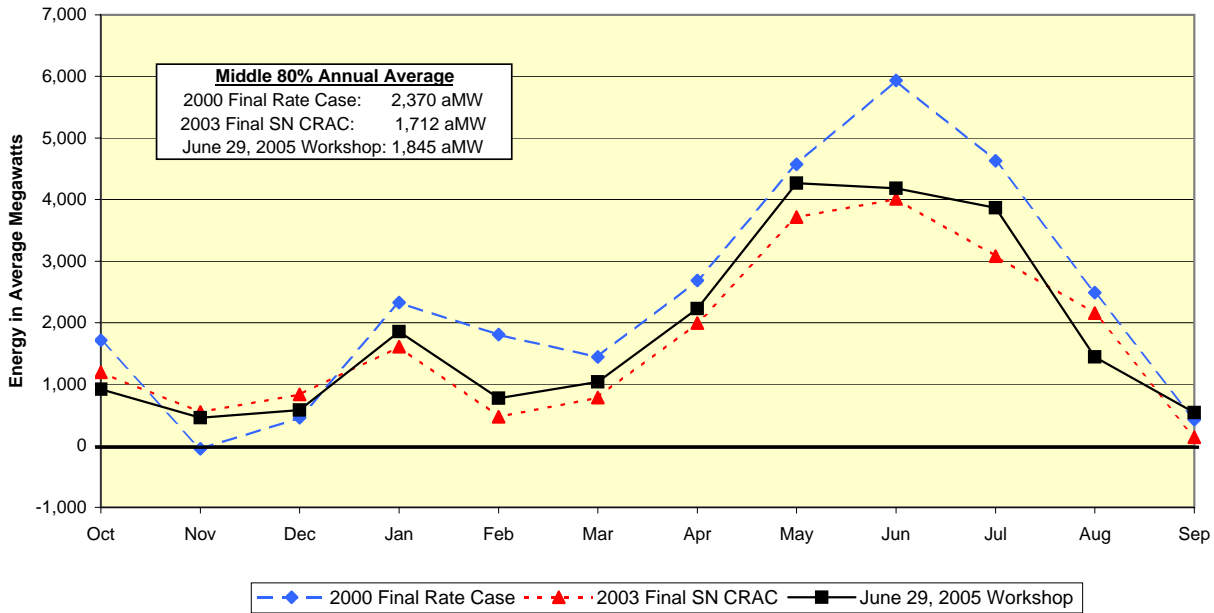
**WP-07 Power Rate Case Workshop  
FY 2009  
Federal System Energy Surplus/Deficit  
Under 1937-Water Conditions**



**50 WY Avg Bar Graph comparison by month**  
**Rate Case Comparison For FY 2007**  
**Average Water Conditions**

Energy in Megawatts	Oct	Nov	Dec	Jan	Feb	Mar	Apr	May	Jun	Jul	Aug	Sep	Average
2000 Final Rate Case	1713	-49	457	2327	1807	1446	2686	4574	5936	4627	2489	423	2370
2003 Final SN CRAC	1195	550	833	1610	471	783	1996	3713	4012	3081	2156	140	1712
June 29, 2005 Workshop	916	453	578	1856	772	1039	2229	4265	4184	3864	1443	541	1845

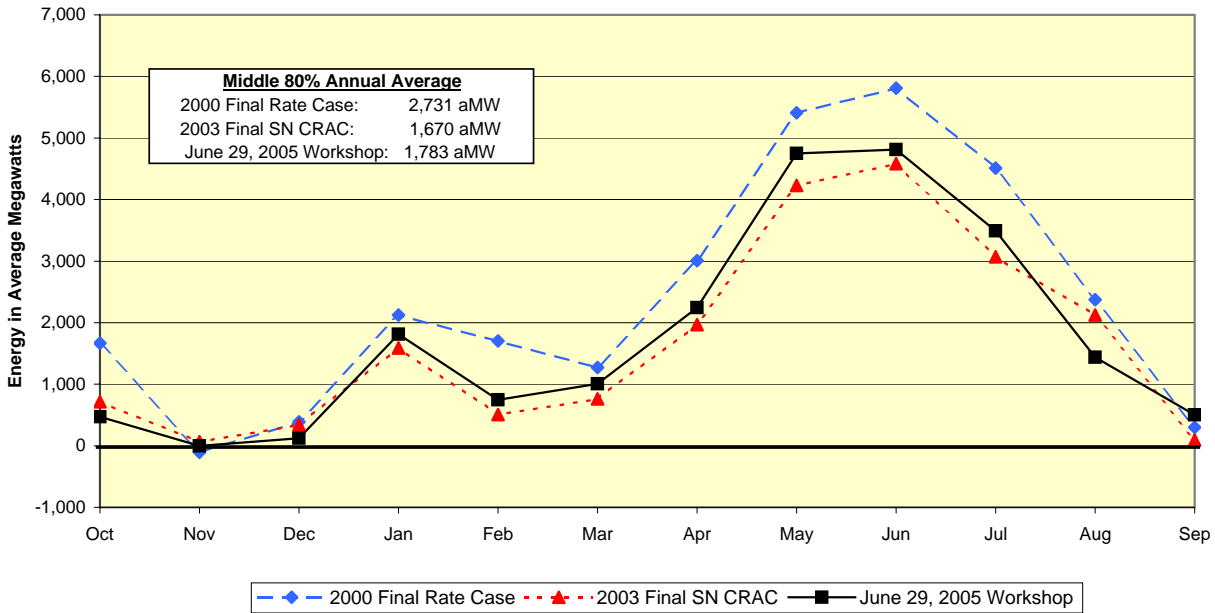
**WP-07 Power Rate Case Workshop**  
**FY 2007**  
**Federal System Energy Surplus/Deficit**  
**Middle 80% Averaged Over the 50-Water Conditions**



**50 WY Avg Bar Graph comparison by month**  
**Rate Case Comparison For FY 2008**  
**Average Water Conditions**

Energy in Megawatts	Oct	Nov	Dec	Jan	Feb	Mar	Apr	May	Jun	Jul	Aug	Sep	Average
2000 Final Rate Case	1668	-105	388	2124	1701	1273	3006	5409	5811	4512	2372	300	<b>2371</b>
2003 Final SN CRAC	713	65	341	1589	506	762	1970	4232	4581	3069	2123	93	<b>1670</b>
June 29, 2005 Workshop	469	-1	122	1814	746	1006	2242	4751	4809	3494	1440	504	<b>1783</b>

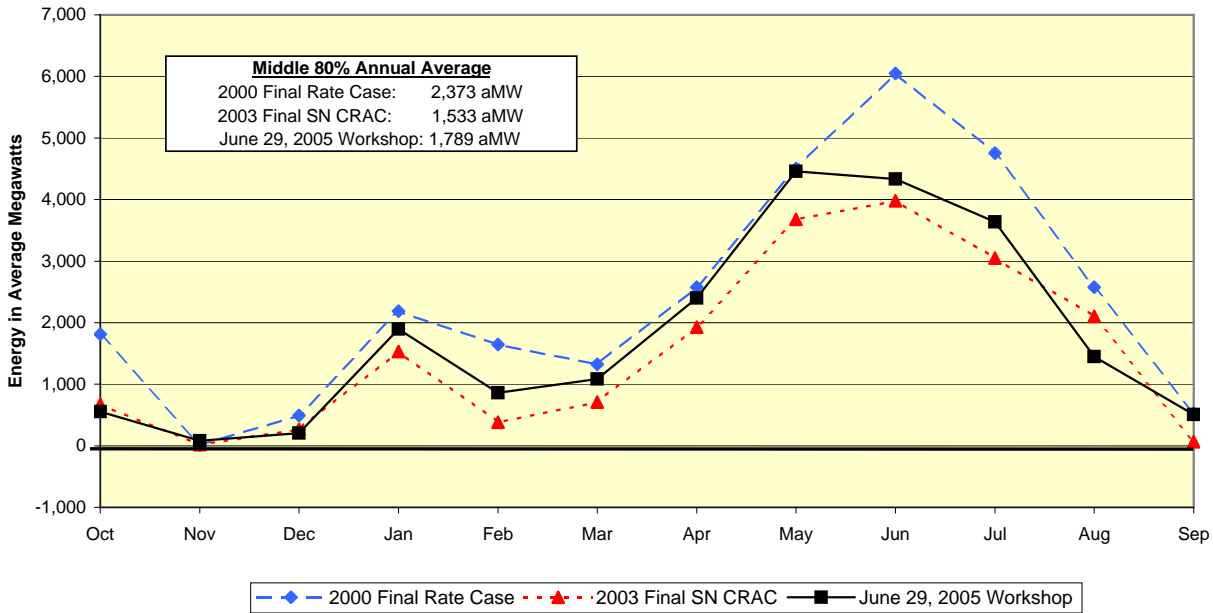
**WP-07 Power Rate Case Workshop**  
**FY 2008**  
**Federal System Energy Surplus/Deficit**  
**Middle 80% Averaged Over the 50-Water Conditions**



**50 WY Avg Bar Graph comparison by month**  
**Rate Case Comparison For FY 2009**  
**Average Water Conditions**

Energy in Megawatts	Oct	Nov	Dec	Jan	Feb	Mar	Apr	May	Jun	Jul	Aug	Sep	Average
2000 Final Rate Case	1812	15	490	2185	1648	1325	2578	4504	6048	4753	2578	534	<b>2373</b>
2003 Final SN CRAC	672	20	270	1531	384	711	1929	3677	3981	3049	2102	67	<b>1533</b>
June 29, 2005 Workshop	554	83	204	1895	862	1085	2399	4456	4332	3637	1449	510	<b>1789</b>

**WP-07 Power Rate Case Workshop**  
**FY 2009**  
**Federal System Energy Surplus/Deficit**  
**Middle 80% Averaged Over the 50-Water Conditions**



**Federal Surplus/Deficit by Water Year  
PNW Loads and Resource Study  
2006 - 2007 Fiscal Years  
[30] 2007 Initial Rate Case**

6/27/2005

Energy in Megawatts	Oct	Nov	Dec	Jan	Feb	Mar	1-Apr	16-Apr	May	Jun	Jul	1-Aug	16-Aug	Sep	Avg
1929 Federal Surplus/Deficit	355.49698	426.57239	-535.531	-567.3526	-1774.353	-387.1806	-448.598	-802.8252	-291.3326	2751.9193	2035.2104	2755.0236	-79.10228	150.25662	239.66291
1930 Federal Surplus/Deficit	743.22055	527.17786	-145.0262	-1975.791	-814.3199	-492.4411	-281.883	-565.3655	-480.8259	1741.7137	2491.1614	687.3957	241.98763	62.710913	141.55393
1931 Federal Surplus/Deficit	761.37898	505.16027	-450.5535	-1925.938	-1803.771	-700.5819	307.24584	-1006.69	-569.0141	1409.0039	2198.5874	1147.7354	535.41041	-79.86269	-13.645
1932 Federal Surplus/Deficit	477.01426	364.80306	-404.2339	-1852.762	-1992.235	713.3027	2788.1325	5248.343	4868.6814	4943.0569	3403.332	812.88892	625.25396	196.16102	1287.8691
1933 Federal Surplus/Deficit	728.7334	60.634289	263.16408	2966.5428	1238.5837	147.58767	811.7462	1869.8947	3236.1216	5462.6191	5863.3467	1330.6769	973.15366	557.9785	1918.1706
1934 Federal Surplus/Deficit	1207.0268	1588.3858	5148.0938	5755.2804	4169.9003	2830.1569	5216.5397	4604.7379	4541.7058	900.29231	2566.2894	2929.2807	2281.5773	496.02578	3059.9354
1935 Federal Surplus/Deficit	526.53178	8.9373859	-512.2824	2335.5055	2771.6721	-813.8246	869.15928	2291.8638	2870.5292	3114.1488	3330.2888	475.4498	-89.06736	-117.8836	1273.9438
1936 Federal Surplus/Deficit	619.58436	392.72529	-321.7154	-1590.921	-1684.983	-479.8749	683.23357	3201.3127	5330.7177	3260.0532	2236.2009	2541.0063	305.0653	135.21963	938.52627
1937 Federal Surplus/Deficit	707.40407	436.95589	-251.1912	-2049.81	-1786.474	-866.7319	-324.7897	-647.3838	632.64701	1783.155	1799.1227	1068.4388	447.97896	69.041988	62.186825
1938 Federal Surplus/Deficit	788.97886	199.25766	-97.21217	2478.1856	-117.2963	1743.9087	2256.6205	3519.8534	5460.0546	4302.0602	3377.5401	590.34485	341.97861	1.553238	1790.9524
1939 Federal Surplus/Deficit	742.1116	389.76458	-265.5621	462.29431	-1810.96	-104.5151	389.10651	2176.1723	3932.3981	1237.5578	2570.6604	695.60257	-137.9531	439.62638	762.90334
1940 Federal Surplus/Deficit	884.77503	345.86446	-44.95189	-77.17795	-775.1395	1746.9165	1522.1764	2419.9012	3136.6763	2108.0027	2047.3966	1449.8812	584.49378	19.913482	1031.7085
1941 Federal Surplus/Deficit	794.4231	324.743	-46.6263	4.4945842	-1634.374	-437.939	-66.39737	-690.4716	1340.2366	1538.6647	1919.4452	68.370671	-25.80939	-9.49598	286.36819
1942 Federal Surplus/Deficit	617.79098	53.417516	1447.8363	2496.8516	-159.6261	-1397.535	145.96426	2197.6355	2925.4129	4354.7036	4186.6129	77.393078	346.04776	535.97564	1370.4134
1943 Federal Surplus/Deficit	677.17501	196.3103	-209.808	2042.4631	1955.9246	2761.0135	5442.089	5170.7442	5130.0616	4665.9256	4709.0141	2432.7163	936.09295	111.98816	2419.2408
1944 Federal Surplus/Deficit	631.68639	484.45825	-314.7652	-24.02231	-1716.405	-1146.967	-645.2994	-1273.248	-305.2613	590.00832	1861.4602	2760.1067	384.3708	108.35695	65.209002
1945 Federal Surplus/Deficit	534.13725	389.91904	-741.5925	-1825.493	-1278.27	-809.0698	-779.5078	-1012.783	2824.2208	4366.4427	2320.7726	-115.7108	8.087496	120.10945	412.60157
1946 Federal Surplus/Deficit	500.02515	370.4424	-152.5078	1177.9755	408.48081	3201.8653	2621.2676	4274.6373	5797.9886	4045.5097	3779.0207	752.89627	256.89817	17.302986	1924.9128
1947 Federal Surplus/Deficit	465.6225	225.98082	2705.5035	3048.5558	2604.499	3503.6732	1145.4649	2489.1842	4956.7265	3743.9902	3868.4931	2633.3304	675.05348	590.68727	2432.104
1948 Federal Surplus/Deficit	2793.5143	999.58855	1722.4805	3938.8011	382.0481	1430.6657	1335.3266	4450.1543	6284.9497	5643.0291	5055.3186	1832.575	61.614598	421.03875	2709.2726
1949 Federal Surplus/Deficit	872.26342	264.17559	-65.55465	373.90469	-175.0886	3509.1841	1750.9899	4643.5952	5613.1456	3790.0627	1417.3199	3087.7299	2616.6762	790.31573	1869.9353
1950 Federal Surplus/Deficit	644.31221	195.09286	-825.2177	1428.0773	3086.4436	4655.1843	3572.0591	3833.2624	4663.1927	5270.8126	5198.2093	355.25739	-234.8538	-192.3377	2323.886
1951 Federal Surplus/Deficit	1307.2056	1403.9718	3259.6755	4851.7163	4831.0253	2947.4675	3777.3731	4626.5035	5708.902	3786.3063	4382.0833	2731.5874	1338.1222	426.25909	3261.7838
1952 Federal Surplus/Deficit	2237.0374	327.71494	1719.6571	2689.1448	1344.9028	1486.1252	3913.6444	4847.6214	6679.0121	4137.4681	3041.7587	3142.7899	1385.261	547.91233	2571.2826
1953 Federal Surplus/Deficit	640.37118	437.3994	-378.6619	50.011976	1812.9323	182.0031	-376.3453	1282.0334	4309.5007	6091.8164	5204.0319	1877.7055	46.95846	249.07526	1667.8047
1954 Federal Surplus/Deficit	813.78407	354.43061	916.99748	1343.2927	2840.5232	1899.3046	2548.3538	2866.8929	5267.8273	5450.6463	5596.3439	2569.6712	975.02329	482.65456	2453.8146
1955 Federal Surplus/Deficit	983.72558	486.34986	1014.0857	455.79775	-1573.107	-1191.153	325.70585	-32.46209	2855.2398	5310.8246	5792.3651	4266.8749	34.056303	2703.5685	1735.4818
1956 Federal Surplus/Deficit	1167.5318	929.46077	3121.0823	5320.3213	1674.1007	3815.391	4193.4043	6138.6306	6433.7292	5314.0144	4909.4953	3193.3973	2198.5663	161.83216	3392.4132
1957 Federal Surplus/Deficit	1013.7979	166.72049	591.24898	1415.7501	-862.6804	1440.4017	3534.542	3534.7953	6540.5202	5884.067	2966.9382	3013.8246	1031.4157	501.34454	2101.2831
1958 Federal Surplus/Deficit	656.41183	343.94884	-509.5486	432.54995	1397.9969	1700.0924	1156.5679	3984.5169	5983.3532	5124.3217	2848.3068	1011.4034	124.41204	222.35807	1778.1868
1959 Federal Surplus/Deficit	620.06035	528.06423	2068.25	4812.2302	2923.664	1853.6114	2736.5039	2404.8422	4084.2898	5736.3171	5167.1532	965.97328	505.61573	358.97337	2621.5901
1960 Federal Surplus/Deficit	3255.142	1945.8036	2696.6199	3122.6019	-381.5535	1433.2925	6381.1896	4509.6722	3289.6598	4522.695	3531.1611	2960.8359	632.43915	2801.4495	2788.245
1961 Federal Surplus/Deficit	625.57623	245.38359	178.41603	1663.9195	2080.7381	2166.3629	2902.6761	1988.5976	4703.6966	5495.4685	3305.236	2063.6467	-42.12189	188.02556	2009.1019
1962 Federal Surplus/Deficit	712.62838	457.09623	-520.376	1540.1475	-741.1862	-754.2095	4151.0732	5748.594	3925.5318	3536.7974	3469.0836	1286.7712	639.67602	60.54953	1466.5933
1963 Federal Surplus/Deficit	1175.8431	686.79361	2188.9257	2768.9337	437.31407	-345.4506	298.67487	720.53428	4567.8849	4338.5561	3535.6386	2279.1596	800.4562	202.63098	1800.5402
1964 Federal Surplus/Deficit	484.70831	387.41732	-104.6751	896.53412	-362.0077	-568.6205	1083.1938	1577.5211	3449.1641	5605.042	6073.8747	2658.9802	754.49031	581.49831	1623.3357
1965 Federal Surplus/Deficit	1559.8792	313.81365	3132.838	5668.2425	4035.9142	3327.9408	2435.8895	4499.5136	5383.5606	4801.8954	3629.982	3037.6796	2030.5141	1001.7851	3238.1375
1966 Federal Surplus/Deficit	1089.3976	382.54036	652.332	2766.8618	-884.6429	-478.591	3545.4937	2276.6667	3217.9289	3187.875	4077.3417	2774.7754	1622.5907	280.92232	1616.8108
1967 Federal Surplus/Deficit	621.50895	341.19247	-17.61605	3529.8749	3657.5694	823.38773	672.99087	365.07927	3402.5369	5516.7108	5470.6496	2026.9141	235.71842	-13.09624	2081.9225
1968 Federal Surplus/Deficit	816.98397	182.66493	146.89872	2013.7747	1939.0765	1436.1626	-991.2044	305.63815	2943.421	5024.9836	4623.2273	3258.7719	859.89484	588.91519	1786.0549
1969 Federal Surplus/Deficit	1664.2244	1066.5197	1778.1666	4875.0899	2815.6535	1116.0706	4915.3316	4820.0771	6577.8872	5297.5641	3784.8381	3149.7949	1700.1267	1518.3191	3148.9166
1970 Federal Surplus/Deficit	767.34438	383.76764	-482.672	1670.8151	937.66297	152.79539	-114.2792	995.01071	4233.9636	4656.7357	3205.9652	2173.4748	86.765563	325.2234	1451.8406
1971 Federal Surplus/Deficit	653.03079	433.62221	-545.5158	3615.1008	5308.7374	2608.0582	3377.1787	4416.6876	6467.601	5613.2534	5427.1809	589.0756	-98.10195	11.184313	2811.2228
1972 Federal Surplus/Deficit	990.66319	274.81931	723.82219	3534.0064	4221.4063	5593.9828	5104.0625	2815.895	6332.3647	5428.7842	5838.0395	4000.0331	2471.1445	812.38856	3412.1537
1973 Federal Surplus/Deficit	1032.0251	398.46525	766.31717	2406.4	-1551.573	-778.1517	-1767.1763	-896.5359	1276.3179	1438.5475	2127.7055	4179.8928	3199.756	1128.0948	925.17643
1974 Federal Surplus/Deficit	461.16676	-120.7228	1958.4193	6482.1566	4902.0587	4400.4132	4925.7683	5605.1334	5985.1991	5317.4301	5778.2053	599.85986	-69.87595	-386.2762	3359.0411
1975 Federal Surplus/Deficit	267.89737	353.26292	-166.441	2190.1073	877.35547	2449.731	649.77178	1705.8422	4358.3629	5440.1227	6222.5051	3725.1212	2944.379	704.99244	2267.5378
1976 Federal Surplus/Deficit	1471.3923	1315.0822	4140.4936	4879.5998	2906.0777	1904.0643	4520.1855	4191.3725	5956.3873	3846.0837	5655.8008	1513.3307	1012.3668	646.49913	3195.0091
1977 Federal Surplus/Deficit	876.97732	405.52175	-312.0218	209.98955	-1849.8723	-1447.728	-1201.071	-1551.839	-76.84552	259.23123	1371.488	5107.1165	4743.4373	3552.9605	544.88103
1978 Federal Surplus/Deficit	273.05754	137.92394	-284.0694	1715.2255	797.05271	2262.4543	2629.9661	1996.5705	3669.6713	3103.7339	4206.3546	378.65434	407.27833	-132.6359	1537.9169
<b>Ranked Averages</b>															
Top Ten Percent	1097.2893	560.26854	2439.1675	5171.2886	3932.901	4017.0391	4087.2996	4737.1352	5968.7511	4929.6861	4907.5611	2712.5115	1593.6942	403.19775	3332.7059
Middle Eighty Percent	915.67365	453.44322	578.41561	1855.6583	771.5066	1038.7678	1889.9235	2568.6442	4264.8933	4184.1448	3863.8552	1973.1062	912.70494	540.63996	1844.9323
Bottom Ten Percent	639.83739	476.06385	-339.4134	-1308.583	-1579.065	-718.5806	-278.6649	-859.1027	-202.7574	1655.16	2077.1084	1683.74	306.1291	62.100757	98.993534

**Federal Surplus/Deficit by Water Year**  
**PNW Loads and Resource Study**  
**2007 - 2008 Fiscal Years**  
**[30] 2007 Initial Rate Case**

6/27/2005

Energy in Megawatts	Oct	Nov	Dec	Jan	Feb	Mar	1-Apr	16-Apr	May	Jun	Jul	1-Aug	16-Aug	Sep	Avg
1929 Federal Surplus/Deficit	-92.55465	-28.84312	-994.535	-613.201	-1806.703	-424.3081	-436.3034	-813.5451	267.95115	3473.1808	1541.6735	2756.1736	-90.2891	113.54486	178.68531
1930 Federal Surplus/Deficit	295.41341	71.928635	-604.2764	-2026.655	-843.9793	-529.6323	-270.4705	-500.136	42.07483	2480.6892	2024.5343	675.49515	232.03475	25.991906	83.712577
1931 Federal Surplus/Deficit	313.73609	49.909237	-910.0843	-1976.499	-1835.955	-738.2537	317.12666	-1004.131	-41.57828	2159.978	1705.4041	1137.9842	527.59705	-116.4837	-75.04485
1932 Federal Surplus/Deficit	28.956403	-90.79768	-864.0542	-1903.574	-2025.007	679.85179	2760.9198	5220.4581	5329.0253	5539.3702	3030.7289	802.92959	618.39478	159.78051	1215.4692
1933 Federal Surplus/Deficit	280.92682	-395.1977	-194.3588	2925.0255	1213.4539	110.05749	817.75646	1972.1113	3711.6619	6065.2371	5698.026	1325.1065	969.85047	521.37565	1873.2183
1934 Federal Surplus/Deficit	761.10116	1136.4191	4700.3622	5721.4764	4150.2116	2800.4337	5196.4603	4578.4222	4998.6836	1651.7211	2132.7386	2933.5234	2287.6798	459.8104	3000.9167
1935 Federal Surplus/Deficit	78.310603	-447.073	-971.1364	2293.0913	2748.1889	-852.7576	876.65574	2393.8568	3395.1069	3782.4364	2957.2927	465.45114	-99.24142	-154.5217	1220.6083
1936 Federal Surplus/Deficit	171.49331	-62.73084	-781.4179	-1640.213	-1717.251	-516.1446	689.05956	3170.1696	5793.5402	3909.1215	1761.3082	2543.8707	398.3771	98.644526	863.92414
1937 Federal Surplus/Deficit	259.50964	-18.43642	-710.7248	-2100.048	-1818.486	-904.3887	-312.4393	-624.6877	1221.4956	2520.8197	1304.5768	1060.6421	440.47242	32.209992	5.7100779
1938 Federal Surplus/Deficit	341.31976	-256.6434	-556.2553	2437.2848	-145.7729	1712.193	2229.1189	3487.6368	5920.3854	4897.6831	3005.3145	580.58792	334.42949	-35.22774	1719.6806
1939 Federal Surplus/Deficit	294.65074	-65.66645	-724.4633	417.12844	-1842.37	-139.5611	399.45478	2273.8324	4401.6279	1983.0065	2120.2081	685.85475	-149.17	403.14016	704.39057
1940 Federal Surplus/Deficit	437.32624	-109.6989	-503.9901	-123.6789	-803.9144	1716.3641	1526.8806	2500.511	3662.3236	2848.3877	1565.2742	1444.5698	577.41847	-16.86026	974.68527
1941 Federal Surplus/Deficit	346.99371	-130.9821	-504.3367	-40.8239	-1665.92	-474.5775	-56.83341	-634.521	1932.1929	2272.5427	1440.5043	55.694822	-35.6472	-46.31719	232.80189
1942 Federal Surplus/Deficit	170.32029	-401.8724	994.24095	2456.7873	-189.596	-1435.605	157.94088	2269.0222	3477.4864	4952.5358	3835.5314	64.327694	339.12248	499.28357	1314.5266
1943 Federal Surplus/Deficit	229.40038	-259.5037	-667.721	2001.8578	1933.1087	2732.4738	5421.4334	5145.2317	5590.4876	5264.4144	4424.1057	2433.199	932.14632	75.222386	2357.4876
1944 Federal Surplus/Deficit	184.11853	28.985722	-773.2108	-69.14377	-1748.201	-1184.401	-630.8148	-1314.569	275.30961	1324.7836	1366.2095	2763.9953	378.08786	71.443437	6.1869664
1945 Federal Surplus/Deficit	86.111787	-65.47373	-1200.926	-1875.722	-1308.7	-846.6113	-766.445	-1023.68	3397.4628	4963.1748	1859.4053	-130.1246	-2.155446	83.43228	344.24599
1946 Federal Surplus/Deficit	52.558366	-84.95488	-610.962	1134.3292	383.34597	3172.8722	2593.7521	4246.1847	6258.7287	4639.7506	3427.5743	742.30519	248.71826	-19.69469	1855.7523
1947 Federal Surplus/Deficit	18.350452	-229.0355	2255.0468	3009.3604	2583.2893	3474.0911	1149.4403	2525.9605	5417.3796	4338.5918	3516.6807	2635.2372	669.31639	554.06182	2368.9828
1948 Federal Surplus/Deficit	2350.1279	546.63086	1268.0331	3900.188	355.11674	1397.7205	1339.77	4420.5188	6749.2418	6247.1878	4706.3373	1830.6955	52.193737	384.3451	2643.8765
1949 Federal Surplus/Deficit	425.13375	-191.3621	-523.3282	329.96863	-202.6616	3483.4063	1754.5175	4616.198	6075.1573	4383.6573	908.34501	3092.0286	2623.7682	754.17919	1790.4793
1950 Federal Surplus/Deficit	196.68307	-260.4423	-1284.513	1384.5758	3064.8756	4629.7253	3548.5322	3803.7083	5120.6057	5873.2626	4853.4929	343.77411	-246.4605	-229.4762	2256.1306
1951 Federal Surplus/Deficit	861.6156	952.53152	2810.0695	4815.2614	4814.3906	2919.3297	3752.9255	4598.1641	6170.0318	4379.6012	4032.6183	2735.2283	1338.3546	389.7195	3196.4588
1952 Federal Surplus/Deficit	1792.8049	-127.2424	1266.5382	2649.2893	1321.2259	1454.6046	3890.3784	4821.3671	7143.9039	4733.8165	2641.4321	3147.1372	1384.4709	511.57838	2500.8024
1953 Federal Surplus/Deficit	192.56214	-17.91462	-837.642	5.6217463	1791.4108	146.11594	-366.4301	1386.2861	4766.4055	6693.8349	4858.368	1874.9911	37.748007	212.25588	1606.443
1954 Federal Surplus/Deficit	366.52999	-101.0295	460.5706	1301.2317	2818.7103	1865.8414	2523.2002	2874.9849	5726.932	6049.0328	5249.476	2570.6433	970.77368	446.03424	2387.7609
1955 Federal Surplus/Deficit	537.35439	32.223482	557.67091	409.27307	-1604.364	-1229.853	335.1947	74.921862	3433.839	5913.5174	5759.283	4279.4071	3426.1038	2669.2862	1711.337
1956 Federal Surplus/Deficit	721.06179	476.03077	2671.1365	5285.1274	1651.2637	3789.7961	4168.8496	6115.3585	6898.6246	5917.416	4560.3198	3199.3816	2202.4037	125.16095	3328.2445
1957 Federal Surplus/Deficit	567.06003	-288.8529	136.01078	1373.1429	-891.4679	1407.797	3512.2226	3503.174	7004.1107	6486.8239	2556.6192	3017.8255	1128.576	464.64053	2028.8982
1958 Federal Surplus/Deficit	209.11804	-111.4625	-968.2464	388.80199	1374.5522	1667.7071	1159.9438	3955.1228	6445.937	5722.8588	2419.62	1002.857	1108.8126	185.56829	1704.2339
1959 Federal Surplus/Deficit	172.52247	74.246239	1615.1865	4776.3486	2902.3943	1821.2522	2707.8997	2436.0499	4540.3009	6336.7004	4818.0585	957.07977	498.43133	322.2888	2556.5857
1960 Federal Surplus/Deficit	2814.1249	1495.4473	2244.282	3081.7535	-409.1217	1401.3096	6359.5901	4478.8023	3751.4749	5118.4459	3179.0175	2965.03	626.72568	2766.8819	2721.5575
1961 Federal Surplus/Deficit	178.15202	-209.5801	-279.6104	1620.7609	2057.7628	2135.0708	2873.0494	2108.4079	5159.5597	6095.8798	2911.4338	2062.69	-52.77094	151.48074	1943.0498
1962 Federal Surplus/Deficit	264.94328	1.6482961	-980.2331	1497.1435	-770.3371	-791.2044	4126.1567	5721.5197	4380.86	4130.2249	3099.1972	1279.3579	632.89357	23.76778	1394.6645
1963 Federal Surplus/Deficit	729.98114	233.24116	1735.6093	2726.8652	413.00489	-379.9604	308.33321	838.43509	5026.8793	4935.7349	3171.0923	2278.3003	795.15387	165.94269	1739.0418
1964 Federal Surplus/Deficit	36.73095	-67.96304	-563.4459	852.87072	-390.5274	-606.0526	1090.6428	1681.3086	3904.3934	6207.7812	5729.3038	2659.8124	749.02738	545.11499	1561.5501
1965 Federal Surplus/Deficit	1114.2098	-141.1681	2684.364	5635.5157	4020.0574	3300.8685	2408.2481	4473.3817	5845.7235	5401.3443	3282.4518	3041.6902	2031.9966	965.74507	3173.8975
1966 Federal Surplus/Deficit	643.08878	-72.03124	197.16287	2726.0108	-913.9269	-514.8071	3519.0239	2385.848	3751.5754	3864.5957	3725.4637	2778.2792	1623.951	244.17996	1567.0719
1967 Federal Surplus/Deficit	173.62831	-114.3094	-475.6805	3489.6263	3637.4607	787.83195	682.13678	485.19823	3856.2381	6119.121	5123.4761	2025.741	226.6958	-49.80888	2021.4558
1968 Federal Surplus/Deficit	370.22363	-272.1242	-308.914	1973.022	1916.2986	1403.8656	-977.5858	436.84281	3477.9578	5622.0425	4273.2499	3263.0127	855.55	552.64694	1733.0982
1969 Federal Surplus/Deficit	1219.1353	613.75809	1324.0701	4839.7389	2795.4829	1086.2277	4893.5445	4793.1026	7041.6578	5892.8672	3427.6605	3153.6919	1700.5753	1482.691	3082.8122
1970 Federal Surplus/Deficit	319.91634	-71.41162	-940.8602	1630.5493	915.39625	117.12291	-103.4298	1119.7114	4690.3899	5256.536	2823.7637	2171.0447	76.748705	288.61315	1388.5044
1971 Federal Surplus/Deficit	205.90572	-21.29221	-1002.769	3578.8794	5294.9808	2580.346	3351.6488	4387.961	6932.374	6215.8276	5084.2036	577.97248	-109.2968	-25.89288	2745.5588
1972 Federal Surplus/Deficit	543.47426	-179.8974	268.48469	3496.2864	4205.4092	5571.6067	5082.1366	2808.8624	6796.3705	6032.5895	5491.7298	4008.7109	2475.8439	775.93726	3349.1473
1973 Federal Surplus/Deficit	584.93857	-56.58925	311.54788	2367.2398	-1582.507	-815.3358	-751.3632	-903.5119	1866.2289	2179.8058	1641.9525	4190.5087	3208.1229	1091.9994	871.76327
1974 Federal Surplus/Deficit	13.303385	-576.0152	1506.276	6451.3688	4886.618	4375.4126	4903.4511	5580.4541	6448.0914	5921.1265	5747.1115	588.90803	-81.0874	-423.1987	3320.4964
1975 Federal Surplus/Deficit	-180.1121	-101.9288	-624.027	2148.917	852.32906	2420.2426	659.82049	1810.1711	4816.5672	6040.5618	5998.9559	3733.1877	2951.3107	669.08885	2218.1533
1976 Federal Surplus/Deficit	1025.8364	863.25874	3693.712	4844.0514	2885.4295	1874.645	4498.2372	4161.6898	6419.8855	4441.4376	5309.0779	1507.7177	1007.4403	609.93804	3129.5679
1977 Federal Surplus/Deficit	430.30519	-49.76335	-770.0245	164.99986	-1881.917	-1487.321	-1185.298	-1594.287	531.84513	1010.7747	845.44573	5125.5016	4762.6518	3519.3408	488.9975
1978 Federal Surplus/Deficit	-175.3771	-317.8033	-741.097	1673.1896	770.76357	2233.4913	2600.1154	2055.4361	4126.6683	3697.8597	3858.3027	365.56494	398.15937	-169.3916	1472.187
<b>Ranked Averages</b>															
Top Ten Percent	650.73298	106.29631	1988.0661	5136.712	3915.5478	3991.4027	4063.1222	4715.2442	6431.7684	5530.4155	4622.8462	2714.7838	1593.5023	366.67283	3273.6489
Middle Eighty Percent	468.72845	-1.396498	122.00078	1813.6597	745.83579	1005.5717	1883.6361	2599.6041	4750.677	4809.4541	3493.683	1970.9096	908.31389	504.23558	1782.8068
Bottom Ten Percent	192.0446	20.708812	-798.5663	-1357.109	-1610.665	-756.1968	-266.5803	-851.4138	353.05058	2391.8903	1588.4796	1678.8581	297.5806	25.34129	39.850016



**Federal Surplus/Deficit by Water Year**  
**PNW Loads and Resource Study**  
**2008 - 2009 Fiscal Years**  
**[30] 2007 Initial Rate Case**

6/27/2005

Energy in Megawatts	Oct	Nov	Dec	Jan	Feb	Mar	1-Apr	16-Apr	May	Jun	Jul	1-Aug	16-Aug	Sep	Avg
1929 Federal Surplus/Deficit	-7.493785	55.571455	-913.0071	-532.7811	-1691.431	-345.721	-345.8966	-692.7529	-91.20144	2983.862	1672.3369	2767.4973	-83.73019	118.31979	172.58443
1930 Federal Surplus/Deficit	380.82565	156.62643	-522.7558	-1947.702	-728.4255	-450.8507	-163.9793	-364.2526	-320.2104	1987.3482	2157.697	685.02469	238.29632	30.618772	78.393007
1931 Federal Surplus/Deficit	399.06214	134.55166	-828.1885	-1897.671	-1720.541	-659.5048	409.84862	-883.1361	-402.8687	1664.9163	1835.9877	1148.2113	534.60982	-111.6298	-81.75991
1932 Federal Surplus/Deficit	114.3683	-6.322923	-782.2876	-1824.896	-1909.782	758.30402	2933.4635	5464.1508	5110.4027	5118.6982	3172.3557	813.2699	625.1979	165.03943	1236.1601
1933 Federal Surplus/Deficit	366.17131	-311.3088	-112.0305	3007.3854	1331.5545	188.36107	925.33331	2156.8398	3431.2653	5533.8362	5861.5988	1336.5693	978.31076	526.72423	1876.8403
1934 Federal Surplus/Deficit	847.13763	1221.7746	4785.2182	5806.0972	4269.7068	2880.9591	5335.6565	4810.5922	4703.3209	1149.6312	2269.6857	2944.7461	2297.3323	466.11845	3007.8178
1935 Federal Surplus/Deficit	163.56092	-363.1381	-889.2614	2375.2747	2866.7498	-774.52	969.85408	2536.5712	3056.5709	3299.1515	3099.2242	475.09704	-93.4259	-149.542	1219.0099
1936 Federal Surplus/Deficit	256.82864	21.784811	-699.5505	-1561.034	-1601.809	-437.4366	815.04143	3323.1575	5574.1739	3451.6044	1893.9027	2555.2613	305.64398	103.87955	875.15793
1937 Federal Surplus/Deficit	344.87161	66.194389	-628.9505	-2020.864	-1702.873	-825.5495	-221.6693	-500.9783	866.98387	2029.4104	1435.2767	1071.4198	447.1917	36.936217	-0.048479
1938 Federal Surplus/Deficit	426.77636	-172.3774	-475.0888	2519.8908	-29.64088	1791.809	2382.0283	3732.9719	5705.8559	4482.8047	3146.5437	590.89988	340.49565	-30.4996	1740.7726
1939 Federal Surplus/Deficit	379.86253	18.695032	-643.1985	497.88046	-1726.919	-60.85293	516.08882	2431.3924	4067.3728	1486.3484	2254.6501	695.34764	-143.2779	408.64202	702.688
1940 Federal Surplus/Deficit	522.80316	-25.27034	-492.2707	-43.40076	-688.1807	1796.2003	1662.4268	2660.3249	3323.235	2358.6989	1696.7017	1455.5361	584.39594	-12.03225	973.98552
1941 Federal Surplus/Deficit	432.21127	-46.90393	-422.4145	39.78886	-1550.881	-395.888	34.686408	-510.772	1584.05	1781.5773	1571.6558	65.563599	-29.31569	-41.61208	227.63875
1942 Federal Surplus/Deficit	255.29951	-318.1144	1076.8528	2539.231	-74.27501	-1357.425	250.22639	2412.7144	3137.5486	4477.5596	3981.6779	73.812064	345.62798	504.57638	1313.6767
1943 Federal Surplus/Deficit	314.64178	-175.519	-586.4842	2082.8917	2049.3213	2811.8093	5503.6011	5314.6832	5361.5379	4853.9596	4575.8232	2444.7113	940.28542	80.325076	2372.4956
1944 Federal Surplus/Deficit	269.24215	113.29217	-692.0992	11.570519	-1633.033	-1105.879	-541.0898	-1196.233	-83.7636	827.62491	1493.9027	2774.7017	385.84614	76.310059	-0.784752
1945 Federal Surplus/Deficit	171.31411	18.971667	-1119.267	-1797.145	-1193.504	-768.0607	-676.8522	-900.7136	3055.6022	4488.9298	1992.9757	-120.5421	3.2590721	88.315543	340.89233
1946 Federal Surplus/Deficit	137.85277	-0.72671	-530.0747	1214.4583	499.91934	3252.6718	2753.8398	4506.382	6048.9085	4196.0373	3571.4034	751.96496	255.90817	-15.33517	1875.7635
1947 Federal Surplus/Deficit	103.16912	-145.0087	2337.7162	3091.4389	2700.1833	3554.6271	1270.2342	2726.4631	5160.7605	3903.54	3660.4958	2646.6491	677.19059	559.56869	2382.2299
1948 Federal Surplus/Deficit	2437.0079	631.46342	1350.6396	3981.9715	470.69393	1477.0773	1465.8561	4667.3114	6441.2624	5716.5	4859.8649	1842.1664	59.332073	389.47954	2647.7745
1949 Federal Surplus/Deficit	510.35949	-107.2581	-441.5425	410.82986	-86.77561	3563.5048	1906.7431	4871.6561	5768.0293	3945.7917	1037.4872	3103.1417	2633.2544	760.94742	1801.5643
1950 Federal Surplus/Deficit	281.83169	-176.3796	-1203.588	1465.7997	3182.6181	4710.6344	3722.6562	4038.0949	4882.1226	5341.7859	5010.521	353.26223	-241.2351	-225.3849	2267.1959
1951 Federal Surplus/Deficit	947.2438	1037.3195	2893.5326	4898.3981	4933.1757	2999.187	3925.7972	4853.2325	5957.7514	3950.7675	4180.8401	2745.5462	1347.0928	395.45929	3219.1258
1952 Federal Surplus/Deficit	1879.0341	-42.94423	1349.0624	2731.3303	1437.7065	1534.3828	3995.0678	4989.6375	6757.3652	4317.8477	2780.4572	3158.3065	1393.3274	517.73285	2502.512
1953 Federal Surplus/Deficit	277.73473	66.622185	-756.1253	85.186319	1908.562	224.59568	-262.0365	1565.3718	4513.0658	6162.1384	5011.7166	1886.0248	44.614708	217.093	1610.6314
1954 Federal Surplus/Deficit	451.81742	-17.61647	542.89478	1382.5167	2936.2908	1945.6383	2673.5228	3091.62	5502.9179	5517.6231	5409.8427	2581.7216	978.54985	451.39143	2398.912
1955 Federal Surplus/Deficit	623.04643	117.04051	640.33734	489.46263	-1488.766	-1151.072	457.04183	206.53633	3509.19851	5383.116	5858.7007	4292.2098	3435.6923	2678.7164	1703.1923
1956 Federal Surplus/Deficit	806.69233	560.71572	2754.2529	5368.402	1767.8422	3870.0375	4349.2989	6212.4441	6511.9005	5386.5509	4713.3686	3210.5921	2211.9417	130.40102	3321.8585
1957 Federal Surplus/Deficit	652.33209	-204.7792	218.08365	1454.7851	-776.1225	1486.4343	3690.0543	3729.6293	6616.5916	5955.9039	2694.4946	3029.8852	1036.9408	469.95685	2025.8759
1958 Federal Surplus/Deficit	294.28042	-27.08296	-887.0809	469.74019	1491.1467	1747.4944	1293.4242	3203.8543	6137.9474	5308.2586	2555.7772	1012.8824	120.90006	190.42173	1716.3694
1959 Federal Surplus/Deficit	257.62373	158.63458	1697.7567	4859.3852	3020.4312	1900.6258	2845.2945	2609.5038	4276.3643	5809.6857	4975.2353	967.15294	505.57487	327.30125	2562.2339
1960 Federal Surplus/Deficit	2901.1483	1580.8016	2327.7566	3164.0174	-292.9426	1480.7917	6443.3328	4680.2467	3471.2772	4693.8027	3322.6046	2976.3791	634.9127	2775.9735	2732.7222
1961 Federal Surplus/Deficit	263.50422	-125.1703	-197.5015	1702.6676	2174.9104	2215.0191	3005.0052	2262.4299	4894.2174	5565.3055	3051.3252	2074.373	-46.14739	156.76148	1945.7391
1962 Federal Surplus/Deficit	350.2182	85.982366	-898.9356	1578.7809	-654.9672	-712.5147	4308.7128	5982.0575	4122.8872	3701.9708	3241.3988	1289.9505	640.76554	28.413832	1412.8315
1963 Federal Surplus/Deficit	815.2602	317.88064	1818.3835	2808.5041	528.62204	-300.3165	414.03704	975.59826	4696.782	4461.6994	3313.304	2289.1136	803.10167	170.92662	1739.3309
1964 Federal Surplus/Deficit	121.7699	16.331669	-481.7916	934.41634	-274.303	-527.5189	1245.6072	1864.4939	3652.5862	5676.1255	5891.3825	2671.6491	756.87485	550.82931	1569.095
1965 Federal Surplus/Deficit	1200.1241	-56.65939	2767.2612	5718.8225	4137.8052	3380.8688	2557.544	4694.2471	5598.8238	4943.2571	3426.602	3053.1091	2040.6174	972.3946	3188.5049
1966 Federal Surplus/Deficit	728.47141	12.352507	279.43541	2808.0241	-797.8815	-436.1712	3674.2794	2533.3251	3413.2723	3380.2465	3871.291	2789.8058	1632.4171	249.48068	1568.6196
1967 Federal Surplus/Deficit	258.86537	-30.00334	-393.8533	3572.0774	3756.1392	867.17963	789.23538	624.63414	3609.3758	5587.6348	5281.4597	2037.6321	234.60743	-44.9984	2025.5776
1968 Federal Surplus/Deficit	455.49276	-187.8446	-226.7929	2054.7426	2032.9133	1483.6015	-889.0414	560.96399	3136.4645	5151.4678	4422.5335	3274.4842	863.96703	558.51391	1732.19
1969 Federal Surplus/Deficit	1304.9618	698.59604	1406.8455	4922.4383	2913.1759	1165.6823	5057.5669	5060.8853	6680.2061	5469.4592	3571.3066	3165.3966	1709.3381	1490.4386	3093.3087
1970 Federal Surplus/Deficit	405.10393	13.208997	-859.1259	1711.6183	1031.9348	195.8833	-4.369093	1252.8033	4461.2034	4799.4437	2963.2839	2182.6021	83.845113	293.64604	1397.8034
1971 Federal Surplus/Deficit	291.06938	62.980053	-921.9278	3660.582	5413.8628	2659.9472	3535.2796	4636.8562	6545.3514	5683.859	5240.6742	587.66361	-103.0244	-21.58918	2745.2664
1972 Federal Surplus/Deficit	628.59102	-95.81897	350.63309	3578.2294	4324.1446	5652.9337	5230.1055	3015.5764	6430.8068	5501.4885	5654.7178	4020.3031	2485.52	781.58679	3348.5888
1973 Federal Surplus/Deficit	670.16255	27.585709	393.67175	2449.0983	-1467.306	-736.7633	-661.8883	-782.9642	1515.4766	1686.5459	1773.3327	4202.892	3217.784	1098.4442	866.51336
1974 Federal Surplus/Deficit	98.347054	-492.4796	1588.7662	6535.7814	5006.2189	4455.7497	5070.2771	5788.1713	6145.4893	5389.8141	5846.4181	599.04952	-75.41911	-019.033	3320.5093
1975 Federal Surplus/Deficit	-95.11342	-17.56778	-542.5653	2230.5709	968.97054	2500.3615	776.4513	1993.9781	4588.8472	5572.0134	6163.8245	3744.7531	2960.9455	675.70818	2231.9261
1976 Federal Surplus/Deficit	1111.2904	948.26457	3777.4622	4926.7882	3003.544	1953.7676	4666.2201	4416.0082	6104.4937	4032.6831	5467.2301	1517.6247	1014.5272	615.4888	3145.6836
1977 Federal Surplus/Deficit	515.82576	34.724584	-688.5573	245.92224	-1766.694	-1408.742	-1097.056	-1479.933	174.68989	509.30375	970.06845	5138.818	4773.7942	3529.5241	481.98973
1978 Federal Surplus/Deficit	-90.36372	-233.7915	-660.5759	1753.9407	886.10101	2313.8374	2761.5473	2249.1014	3877.6577	3271.8866	4005.1172	376.0197	403.94532	-164.7406	1487.8646
<b>Ranked Averages</b>															
Top Ten Percent	736.19966	190.61545	2070.8892	5219.9267	4033.8373	4071.7553	4226.6045	4912.7343	6128.9543	5034.3756	4764.3893	2725.72	1601.9506	372.16173	3279.7174
Middle Eighty Percent	554.11831	82.986678	204.00562	1895.0765	862.35769	1084.848	2012.2043	2786.7115	4456.3261	4332.1119	3637.3232	1981.8497	915.90584	509.86612	1788.9463
Bottom Ten Percent	277.30156	105.24722	-717.0002	-1277.49	-1495.261	-677.5009	-172.5573	-727.4706	-6.212046	1898.6324	1719.4002	1689.372	304.44276	30.111004	33.676858

**Federal Surplus/Deficit by Water Year  
PNW Loads and Resource Study  
2006 - 2007 Fiscal Years  
[10] 2003 Safety Net CRAC Final Proposal**

6/27/2005

Energy in Megawatts	Oct	Nov	Dec	Jan	Feb	Mar	1-Apr	16-Apr	May	Jun	Jul	1-Aug	16-Aug	Sep	Avg
1929 Federal Surplus/Deficit	711.3397	332.2823	-242.037	-165.656	-2211.35	-797.325	-834.986	-1097.32	-683.466	1342.991	1701.622	2929.8	866.9035	-378.783	45.15153
1930 Federal Surplus/Deficit	890.5637	487.0414	-265.194	-2241.07	-1244.94	-747.098	-463.378	-676.911	-737.906	1238.936	1923.391	1561.516	644.7173	-491.357	-54.5551
1931 Federal Surplus/Deficit	836.2365	454.7803	-221.759	-2193.54	-2189.71	-969.289	63.4474	-1315.48	-229.048	745.2999	1022.454	2029.995	907.3863	-367.391	-189.107
1932 Federal Surplus/Deficit	744.6073	340.2454	-306.344	-2162.72	-2341.46	434.5518	2955.727	4746.301	4711.592	4064.555	2843.321	1897.386	439.5247	-342.438	1083.782
1933 Federal Surplus/Deficit	897.9022	94.40987	622.0753	2311.551	1512.228	-789.86	406.0829	1322.975	3058.638	6346.699	5202.006	3204.373	2262.698	-147.521	1892.183
1934 Federal Surplus/Deficit	2009.83	1827.15	4936.61	5460.198	3821.495	2476.977	5641.954	5005.99	4148.978	581.2381	2468.397	2739.315	3022.535	451.1869	3032.246
1935 Federal Surplus/Deficit	642.8678	54.89559	169.5112	1769.823	2166.493	-1297.54	211.2059	2020.281	2343.183	2932.551	2823.967	1301.769	-61.1581	-535.337	1067.205
1936 Federal Surplus/Deficit	835.6034	360.6118	-258.483	-1497.51	-2174.49	-568.514	-577.175	1731.872	5854.793	2568.598	1794.375	2737.311	922.5571	-361.064	746.7673
1937 Federal Surplus/Deficit	884.6601	411.3656	-278.543	-1981.55	-2003.03	-800.443	-614.7	-823.916	-263.395	729.2158	1280.047	2472.529	676.4676	-456.379	-135.238
1938 Federal Surplus/Deficit	1046.746	281.1506	-185.101	2575.661	-510.289	1466.271	2316.428	2509.351	4902.182	3314.288	2409.076	2077.487	297.4616	-465.504	1536.237
1939 Federal Surplus/Deficit	958.1028	361.4284	-281.632	216.1276	-1893.2	-225.292	257.4628	1097.041	3578.971	1247.458	1904.554	1830.901	504.7771	-57.8005	637.8176
1940 Federal Surplus/Deficit	1071.04	304.834	-70.6063	-422.204	-1095.58	1690.882	1181.78	1833.4	2251.866	1990.627	1285.012	2658.81	798.0698	-450.209	815.9748
1941 Federal Surplus/Deficit	857.8035	186.2339	325.1007	135.9062	-2146.77	-701.787	-981.715	-939.068	344.6429	1564.327	646.3664	1734.107	371.3754	-499.717	67.03822
1942 Federal Surplus/Deficit	804.2317	68.87598	1907.157	2712.831	-1523.94	-1289.1	-263.883	546.4085	1984.62	4511.017	3368.246	1505.396	512.1043	-125.162	1130.732
1943 Federal Surplus/Deficit	859.1249	194.8037	148.1351	1951.215	1208.233	2126.146	5298.833	4659.998	4838.589	4311.65	3485.683	3181.758	2210.925	-160.461	2219.906
1944 Federal Surplus/Deficit	965.0757	395.6086	-302.133	206.6089	-2134.87	-1217.07	-780.367	-1267.31	-710.083	490.1885	484.3556	2966.861	2130.84	-163.336	-38.3869
1945 Federal Surplus/Deficit	675.1844	360.21	-300.7	-2117.68	-1719.44	-929.694	-711.262	-989.551	2245.621	3565.965	1837.806	1595.784	3.274314	-384.802	265.1333
1946 Federal Surplus/Deficit	980.9261	371.5213	-229.277	647.4468	608.4719	2212.906	2774.799	3752.458	5189.234	3699.542	3306.513	1769.6	1275.257	-573.858	1749.957
1947 Federal Surplus/Deficit	846.5984	343.974	2737.91	2945.17	2123.717	2482.523	1164.982	2629.714	4339.107	3382.712	2939.683	3272.795	1909.179	64.10089	2224.486
1948 Federal Surplus/Deficit	3020.921	1327.618	1628.925	2825.478	-311.24	1074.442	1400.026	3570.073	631.875	7055.781	3734.973	3278.825	1321.224	-104.456	2614.116
1949 Federal Surplus/Deficit	1136.836	262.7679	385.7819	770.0667	-470.953	3299.182	1461.885	4472.176	5225.985	3214.516	1178.313	2867.962	3319.127	781.3985	1820.372
1950 Federal Surplus/Deficit	872.2926	183.037	-510.85	1027.257	2537.289	4047.997	3846.522	3666.653	4096.343	6146.149	3855.502	1561.65	38.49713	-768.628	2170.254
1951 Federal Surplus/Deficit	1865.227	1828.962	3706.135	4324.958	4307.403	2719.274	3703.741	4199.028	5233.441	2583.908	3770.459	2482.737	2766.242	222.3349	3094.831
1952 Federal Surplus/Deficit	2482.513	517.0989	2043.831	2599.137	1043.573	1482.985	3930.66	4383.399	6235.546	3517.873	2177.111	2966.998	2870.566	523.1868	2474.889
1953 Federal Surplus/Deficit	834.7341	450.322	-270.514	8.174676	2156.429	-311.338	-705.104	983.0696	3777.991	5916.999	3935.119	2984.273	1173.54	-229.122	1540.557
1954 Federal Surplus/Deficit	1115.038	434.2122	1084.793	1632.94	2396.988	1066.63	3126.523	2456.081	4568.177	5396.988	4649.449	3110.996	1967.356	97.90255	2314.466
1955 Federal Surplus/Deficit	1704.363	945.8603	1215.551	-356.771	-1814.11	-1154.15	233.575	-177.471	1727.563	6713.588	5713.17	4105.438	3077.38	2713.249	1752.314
1956 Federal Surplus/Deficit	1577.419	1227.567	3379.021	4865.05	1559.045	3435.187	3893.084	5860.619	6282.536	6706.822	4103.56	2883.148	3248.611	-10.1201	3422.401
1957 Federal Surplus/Deficit	1239.181	232.0523	1253.312	1334.517	-1173.39	698.217	4476.556	2752.031	5827.364	6417.622	2370.069	3241.019	2475.698	40.11977	2059.309
1958 Federal Surplus/Deficit	974.8382	360.3403	-138.162	853.7881	1093.963	1283.121	468.1103	3361.212	5187.849	4878.707	1938.129	2126.47	733.3466	-316.701	1621.703
1959 Federal Surplus/Deficit	865.6884	847.9003	2008.604	4340.628	2734.035	1305.042	2629.314	1889.038	3461.039	5357.291	4466.364	2154.906	1014.368	-219.506	2417.575
1960 Federal Surplus/Deficit	3653.803	2313.412	2883.706	2587.95	-264.881	1123.078	5741.767	3706.302	3008.272	3709.852	2967.186	2983.136	2298.207	2492.148	2653.269
1961 Federal Surplus/Deficit	1016.321	570.3931	351.9454	1386.266	1779.101	1970.715	2669.245	2722.504	3721.672	6279.075	2515.301	3278.175	883.1915	-146.574	2018.398
1962 Federal Surplus/Deficit	932.2562	343.0085	-393.426	1267.472	-1217.36	-755.853	4072.683	4402.448	3162.47	2847.979	3190.157	2339.217	1385.065	-507.492	1247.409
1963 Federal Surplus/Deficit	1436.665	991.2462	1984.285	1587.747	337.1572	379.7922	320.4015	649.0937	3988.586	3475.241	2910.149	2797.523	1804.485	-271.819	1633.734
1964 Federal Surplus/Deficit	758.5934	399.9503	-23.8942	1133.893	-456.874	-800.764	1406.775	1526.078	2761.485	6384.327	5230.503	3506.705	2018.388	171.8818	1649.006
1965 Federal Surplus/Deficit	1828.869	526.7863	3602.899	5383.921	3919.411	2980.053	2408.884	4299.299	5007.687	4272.318	2472.91	3015.937	2710.268	775.3676	3082.292
1966 Federal Surplus/Deficit	1369.677	576.3759	1178.464	2245.214	-724.386	-500.486	3106.366	1369.094	3081.471	2306.119	3279.82	3079.286	2478.901	127.2474	1496.362
1967 Federal Surplus/Deficit	829.6776	340.248	319.8285	2654.555	3324.036	446.7759	2036.632	869.3415	1836.886	5935.405	4547.158	3320.957	1634.313	-409.478	1979.643
1968 Federal Surplus/Deficit	1183.814	465.4246	1014.741	2148.388	1404.01	1256.213	-1002.13	749.6179	1973.973	4085.559	4205.917	3080.083	2382.171	231.609	1714.543
1969 Federal Surplus/Deficit	1951.594	1368.443	1864.885	4197.812	2863.973	1738.569	4886.613	4436.827	6078.113	3950.794	3147.673	3242.198	2520.906	1177.734	2990.238
1970 Federal Surplus/Deficit	952.5335	463.334	140.5355	1765.101	1335.203	-288.806	-539.16	1548.903	3017.537	4452.098	1296.361	3174.022	1230.613	-232.213	1300.739
1971 Federal Surplus/Deficit	954.3409	564.2908	15.76349	3417.222	4893.621	2487.487	3143.868	3914.711	6436.293	6160.519	4433.238	1981.276	884.6854	-503.763	2818.44
1972 Federal Surplus/Deficit	1036.492	480.0484	1159.134	3218.96	4502.474	5062.998	5383.977	2383.746	6137.326	6601.406	4853.281	3198.521	3402.296	396.1367	3386.044
1973 Federal Surplus/Deficit	1202.867	346.4149	1392.649	2603.076	-1856.7	-864.664	-1142.35	-1033.9	199.7724	1514.061	1632.46	3752.083	3097.392	850.9911	779.7952
1974 Federal Surplus/Deficit	580.9828	48.90139	2201.267	5874.408	4848.691	3804.949	4685.89	5352.704	5555.936	6729.23	6094.714	1874.464	188.4563	-598.635	3432.6
1975 Federal Surplus/Deficit	720.517	367.779	248.2175	2021.108	899.4398	2504.381	1483.286	1799.063	3901.551	4903.144	5124.898	3262.102	3373.575	798.5346	2204.049
1976 Federal Surplus/Deficit	1611.535	1640.042	4474.637	4226.775	2742.135	1906.507	4627.693	3466.672	5643.966	2981.076	4665.639	2082.913	1339.729	169.1252	2984.995
1977 Federal Surplus/Deficit	1357.646	374.4788	-121.148	232.5809	-2226.74	-1544.41	-1277.88	-1556.03	45.66185	138.8542	462.4523	4670.068	4305.257	3343.551	427.8028
1978 Federal Surplus/Deficit	407.9337	158.0928	61.94669	1352.434	-199.856	2364.756	1487.854	2288.438	3419.708	2644.284	3298.952	1910.13	6.566781	-624.808	1310.828
<b>Ranked Averages</b>															
Top Ten Percent	1377.798	822.453	2809.709	4733.459	3827.405	3600.492	4015.115	4419.079	5643.385	5378.737	4258.985	2690.962	2463.175	157.0168	3283.634
Middle Eighty Percent	1195.419	549.8622	832.7191	1609.716	471.4981	782.5972	1789.124	2203.565	3712.729	4011.628	3081.027	2709.13	1602.578	139.8884	1711.607
Bottom Ten Percent	857.5751	416.2156	-261.933	-1275.04	-1956.78	-906.245	-525.997	-1036.19	-524.779	909.3263	1282.374	2392.14	1045.263	-371.449	-74.4273

**Federal Surplus/Deficit by Water Year  
PNW Loads and Resource Study  
2007 - 2008 Fiscal Years  
[10] 2003 Safety Net CRAC Final Proposal**

6/27/2005

Energy in Megawatts	Oct	Nov	Dec	Jan	Feb	Mar	1-Apr	16-Apr	May	Jun	Jul	1-Aug	16-Aug	Sep	Avg
1929 Federal Surplus/Deficit	228.5169	-154.131	-733.424	-196.808	-2191.01	-826.227	-872.447	-1141.51	-185.993	1895.46	1675.711	2899.134	830.5699	-427.497	-4.79416
1930 Federal Surplus/Deficit	403.6823	6.624487	-753.367	-2280.53	-1221.31	-773.177	-500.264	-726.231	-240.17	1800.578	1902.95	1527.427	608.6141	-540.251	-103.35
1931 Federal Surplus/Deficit	347.4366	-26.9905	-706.97	-2232.41	-2167.58	-996.08	27.92869	-1362.05	273.7721	1314.617	1003.026	1997.882	872.3359	-416.638	-236.647
1932 Federal Surplus/Deficit	258.7277	-142.737	-799.282	-2203.48	-2319.48	405.5769	2934.706	4736.19	5234.435	4638.852	2829.334	1865.163	403.2141	-391.309	1040.024
1933 Federal Surplus/Deficit	415.635	-389.754	132.3421	2299.17	1562.554	-810.768	388.8615	1289.789	3578.506	6923.054	5205.768	3173.141	2229.711	-195.364	1855.158
1934 Federal Surplus/Deficit	1536.582	1342.188	4464.633	5460.427	3881.538	2471.314	5633.7	4991.352	4685.906	1140.785	2448.353	2708.518	2991.681	406.1632	3000.043
1935 Federal Surplus/Deficit	156.5092	-430.947	-322.493	1755.395	2220.166	-1313.45	179.9721	1987.762	2851.528	3493.175	2812.526	1269.221	-96.8906	-582.289	1025.846
1936 Federal Surplus/Deficit	352.725	-120.517	-743.955	-1529.56	-2152.24	-596.21	-610.43	1688.146	6378.597	3141.488	1775.293	2706.778	888.5399	-408.818	702.7764
1937 Federal Surplus/Deficit	399.9068	-69.0803	-765.288	-2018.39	-1978.64	-825.44	-648.947	-869.305	227.8275	1280.643	1256.318	2440.411	640.7531	-505.241	-184.661
1938 Federal Surplus/Deficit	561.9248	-198.998	-675.373	2559.509	-473.463	1446.904	2292.942	2476.43	5430.537	3874.39	2395.096	2045.236	263.0683	-514.002	1495.447
1939 Federal Surplus/Deficit	474.8817	-123.628	-774.423	196.1145	-1866.75	-252.336	224.1349	1053.909	4091.9	1807.65	1882.946	1798.455	468.664	-105.235	591.9752
1940 Federal Surplus/Deficit	589.2845	-175.101	-559.801	-454.688	-1073.24	1673.864	1144.732	1809.911	2755.59	2550.641	1261.828	2627.536	762.5019	-498.8	770.1602
1941 Federal Surplus/Deficit	374.4673	-295.967	-162.604	98.63489	-2125.27	-729.462	-1009.11	-968.21	851.0758	2119.988	618.5181	1701.402	335.9081	-548.316	19.25525
1942 Federal Surplus/Deficit	316.7199	-417.128	1412.522	2709.579	-1499.47	-1318.03	-301.914	503.1516	2489.551	5078.722	3360.895	1472.128	476.7051	-173.975	1086.202
1943 Federal Surplus/Deficit	376.0604	-291.439	-348.031	1930.068	1232.828	2104.648	5279.196	4630.445	5368.047	4873.318	3468.302	3151.313	2177.703	-208.642	2177.04
1944 Federal Surplus/Deficit	481.3155	-91.1615	-797.014	175.5876	-2116.33	-1246.59	-820.31	-1307.21	-206.412	1042.707	453.5089	2935.554	2098.183	-212.415	-88.6409
1945 Federal Surplus/Deficit	187.6602	-124.653	-791.417	-2160.53	-1701.59	-959.35	-749.817	-1039.65	2748.429	4125.587	1822.876	1562.308	-33.3644	-433.801	215.2462
1946 Federal Surplus/Deficit	493.3684	-112.973	-722.217	612.566	638.6537	2197.125	2753.383	3724.456	5721.807	4276.083	3294.387	1735.649	1241.011	-622.747	1708.608
1947 Federal Surplus/Deficit	361.0033	-142.829	2235.229	2941.037	2158.322	2470.4	1144.844	2602.465	4858.889	3959.661	2927.56	3242.271	1875.809	16.81661	2184.899
1948 Federal Surplus/Deficit	2551.47	840.4077	1143.928	2809.386	-287.222	1060.783	1376.018	3543.118	6860.602	7637.181	3738.671	3247.292	1286.107	-152.463	2577.418
1949 Federal Surplus/Deficit	655.6906	-222.741	-108.679	748.1331	-449.731	3284.634	1433.805	4450.09	5743.184	3781.373	1153.914	2837.069	3288.099	734.9671	1777.106
1950 Federal Surplus/Deficit	385.5633	-302.147	-1001.44	1008.447	2572.406	4041.49	3821.459	3643.115	4622.321	6724.206	3848.184	1528.087	1.372506	-817.898	2131.512
1951 Federal Surplus/Deficit	1386.459	1337.657	3222.31	4322.188	4359.807	2705.103	3681.255	4179.58	5764.974	3145.534	3765.137	2450.991	2734.532	174.7395	3058.924
1952 Federal Surplus/Deficit	2008.625	33.91691	1551.525	2584.017	1079.391	1460.259	3902.934	4351.546	6763.606	4082.027	2163.18	2936.152	2838.586	476.7632	2434.826
1953 Federal Surplus/Deficit	349.5999	-32.8906	-759.691	-35.3825	2197.945	-329.209	-729.075	946.2039	4297.764	6485.973	3926.525	2953.264	1138.088	-277.91	1498.08
1954 Federal Surplus/Deficit	634.5225	-48.6187	592.3839	1614.484	2442.195	1051.097	3105.593	2418.978	5098.942	5983.033	4648.977	3080.25	1934.485	50.45066	2278.093
1955 Federal Surplus/Deficit	1228.319	462.5849	730.9929	-387.764	-1791.92	-1179.93	202.4464	-206.279	2234.769	7298.734	5719.945	4076.153	3046.335	2671.296	1712.196
1956 Federal Surplus/Deficit	1099.762	738.5477	2891.407	4861.831	1599.657	3416.793	3880.038	5842.26	6811.267	7288.403	4100.304	2852.197	3217.138	-57.8912	3387.158
1957 Federal Surplus/Deficit	757.9103	-254.068	759.1781	1314.433	-1152.82	676.4185	4450.804	2725.799	6356.428	6999.153	2349.966	3210.241	2443.337	-7.3934	2017.858
1958 Federal Surplus/Deficit	490.4932	-123.817	-634.003	832.0002	1122.15	1273.397	438.7118	3328.114	5704.675	5461.231	1914.6	2093.753	696.7385	-365.335	1579.504
1959 Federal Surplus/Deficit	383.6868	360.3157	1516.639	4333.751	2788.516	1284.132	2613.916	1864.426	3989.987	5938.275	4458.98	2122.123	979.3884	-267.956	2381.354
1960 Federal Surplus/Deficit	3183.322	1827.484	2402.91	2586.289	-230.564	1101.773	5739.406	3692.829	3529.854	4278.572	2954.404	2952.492	2265.856	2449.922	2617.438
1961 Federal Surplus/Deficit	535.7872	87.07868	-140.451	1369.809	1820.727	1960.138	2654.321	2694.449	4256.258	6868.693	2498.06	3247.725	846.9901	-193.857	1981.999
1962 Federal Surplus/Deficit	450.5385	-142.756	-886.43	1247.661	-1187.08	-784.186	4045.906	4390.376	3683.883	3412.228	3179.943	2307.271	1350.553	-556.518	1205.361
1963 Federal Surplus/Deficit	954.8325	505.4004	1494.854	1574.553	369.2064	352.151	292.4074	619.8938	4495.568	4038.578	2898.475	2766.89	1770.945	-320.443	1590.687
1964 Federal Surplus/Deficit	275.2633	-85.9735	-517.117	1114.981	-421.849	-827.694	1368.145	1491.83	3274.856	6959.752	5235.443	3476.046	1984.88	124.7463	1607.738
1965 Federal Surplus/Deficit	1353.361	45.38194	3101.326	5377.998	3965.51	2963.436	2382.798	4272.489	5531.236	4830.642	2452.946	2985.467	2678.156	729.4608	3042.563
1966 Federal Surplus/Deficit	888.5969	93.67812	682.6033	2228.681	-684.55	-527.972	3091.922	1339.809	3598.384	2872.235	3270.254	3048.896	2446.377	80.35006	1455.48
1967 Federal Surplus/Deficit	346.8168	-144.602	-171.746	2641.402	3377.321	432.8781	2024.789	839.288	2349.581	6514.45	4542.84	3290.912	1598.721	-458.156	1942.303
1968 Federal Surplus/Deficit	702.2674	-18.5427	519.9351	2130.153	1444.032	1241.705	-1037.71	720.4924	2476.506	4660.683	4194.981	3049.912	2350.225	184.4496	1673.136
1969 Federal Surplus/Deficit	1474.253	881.5385	1377.304	4188.015	2914.803	1715.403	4872.587	4418.544	6608.808	4532.343	3134.956	3212.346	2488.911	1133.739	2954.78
1970 Federal Surplus/Deficit	471.483	-20.66	-353.85	1731.864	1370.401	-309.373	-565.373	1529.841	3527.511	5009.088	1273.434	3142.524	1195.287	-280.634	1255.867
1971 Federal Surplus/Deficit	467.7742	76.25069	-481.498	3395.76	4943.084	2466.627	3116.638	3892.232	6963.757	6733.24	4425.421	1948.967	848.0723	-553.373	2778.333
1972 Federal Surplus/Deficit	553.2013	-6.62768	663.0571	3198.312	4551.405	5057.475	5379.247	2363.172	6665.316	7178.108	4857.971	3168.47	3371.081	348.9542	3350.68
1973 Federal Surplus/Deficit	721.3282	-140.075	897.7687	2582.959	-1834.82	-892.381	-1172.33	-1065.65	698.8257	2076.985	1609.668	3722.555	3066.538	804.201	733.3346
1974 Federal Surplus/Deficit	90.99131	-440.734	1701.475	5869.778	4902.86	3794.609	4668.761	5334.177	6080.495	7306.798	6098.836	1842.199	151.4918	-648.184	3396.27
1975 Federal Surplus/Deficit	235.8039	-119.151	-247.918	2001.575	938.9092	2484.163	1462.01	1766.474	4420.429	5464.71	5120.561	3231.776	3342.598	752.0675	2162.715
1976 Federal Surplus/Deficit	1130.118	1150.173	3989.454	4219.987	2790.174	1889.394	4610.282	3442.315	6169.192	3538.781	4663.789	2051.169	1306.299	122.1072	2947.35
1977 Federal Surplus/Deficit	878.1906	-111.942	-614.421	203.5105	-2206.53	-1572.1	-1314.13	-1592.16	555.0379	697.7771	433.9701	4641.056	4274.984	3302.195	380.8801
1978 Federal Surplus/Deficit	-80.5579	-329.338	-442.316	1321.146	-178.474	2351.938	1473.29	2264.52	3941.924	3200.171	3285.839	1877.289	-29.6069	-673.836	1265.77
<b>Ranked Averages</b>															
Top Ten Percent	896.7551	334.845	2315.915	4726.021	3875.848	3587.483	3998.42	4398.336	6170.657	5949.897	4255.039	2659.865	2430.48	109.4159	3247.119
Middle Eighty Percent	713.4312	64.92552	341.1261	1589.353	505.7067	762.3941	1764.599	2174.908	4231.686	4581.322	3068.717	2677.783	1568.611	92.52911	1670.345
Bottom Ten Percent	372.1716	-66.9477	-751.213	-1310.51	-1934.97	-933.503	-562.808	-1081.26	-26.195	1466.801	1258.303	2360.082	1010.091	-420.408	-123.618

**Federal Surplus/Deficit by Water Year  
PNW Loads and Resource Study  
2008 - 2009 Fiscal Years  
[10] 2003 Safety Net CRAC Final Proposal**

6/27/2005

Energy in Megawatts	Oct	Nov	Dec	Jan	Feb	Mar	1-Apr	16-Apr	May	Jun	Jul	1-Aug	16-Aug	Sep	Avg
1929 Federal Surplus/Deficit	186.8032	-200.241	-804.893	-259.056	-2319.79	-882.025	-925.195	-1182.3	-748.223	1290.076	1653.047	2879.947	805.7248	-454.134	-145.779
1930 Federal Surplus/Deficit	359.9866	-37.665	-824.033	-2347.45	-1347.33	-828.283	-551.579	-767.843	-803.3	1195.374	1881.537	1504.816	583.9993	-567.066	-244.461
1931 Federal Surplus/Deficit	303.3792	-71.5992	-777.274	-2298.7	-2295.96	-1051.9	-21.717	-1404.47	-287.653	710.4209	982.0038	1977.247	848.7739	-443.806	-377.598
1932 Federal Surplus/Deficit	215.2938	-187.726	-872.617	-2270.37	-2448.06	352.4024	2887.58	4707.109	4681.599	4039.592	2809.103	1844.418	378.392	-418.101	900.8217
1933 Federal Surplus/Deficit	374.0451	-434.31	61.11948	2243.881	1445.615	-863.675	341.9224	1254.717	3024.167	6324.952	5188.355	3153.387	2208.213	-221.127	1718.512
1934 Federal Surplus/Deficit	1498.309	1297.861	4402.157	5406.648	3766.641	2424.028	5590.069	4962.391	4134.035	533.0874	2427.239	2689.199	2972.317	383.2183	2865.018
1935 Federal Surplus/Deficit	113.0474	-476.098	-394.858	1699.049	2104.36	-1365.14	131.1958	1954.242	2294.208	2890.638	2792.996	1248.151	-121.135	-607.162	888.1053
1936 Federal Surplus/Deficit	310.4967	-164.869	-814.416	-1592.72	-2280.41	-650.988	-661.142	1654.277	5825.687	2541.165	1754.248	2687.723	866.0111	-434.493	563.9278
1937 Federal Surplus/Deficit	357.0567	-113.331	-835.957	-2084.16	-2106.24	-880.438	-700.197	-909.563	-336.724	673.1455	1234.392	2419.772	616.527	-532.024	-325.918
1938 Federal Surplus/Deficit	519.0814	-242.924	-746.027	2502.673	-594.922	1396.754	2245.503	2443.872	4878.666	3272.846	2375.038	2024.466	204.1634	-540.422	1358.147
1939 Federal Surplus/Deficit	433.3172	-169.183	-846.094	138.102	-1992.81	-306.134	175.1866	1017.907	3536.817	1201.131	1861.295	1777.487	444.0393	-130.59	452.7634
1940 Federal Surplus/Deficit	547.6414	-218.925	-631.109	-517.991	-1199.76	1624.761	1095.318	1779.329	2198.284	1945.133	1239.989	2607.741	738.4225	-525.312	631.0927
1941 Federal Surplus/Deficit	332.8654	-339.888	-232.625	33.83443	-2252.86	-784.815	-1057.39	-1002.84	292.0179	1515.213	595.5126	1680.177	311.9292	-574.837	-120.803
1942 Federal Surplus/Deficit	274.002	-461.529	1341.012	2655.847	-1624.9	-1373.9	-351.595	467.7626	1932.146	4478.518	3341.995	1450.339	452.7943	-200.71	947.6778
1943 Federal Surplus/Deficit	334.1557	-337.085	-420.068	1873.814	1110.831	2055.249	5233.723	4599.366	4816.175	4272.74	3448.141	3132.346	2155.969	-234.745	2039.992
1944 Federal Surplus/Deficit	439.5325	-137.295	-868.848	113.3227	-2245.26	-1303.49	-873.129	-1346.29	-766.982	435.8595	429.2897	2915.727	2077.014	-239.415	-229.719
1945 Federal Surplus/Deficit	144.0283	-170.085	-863.329	-2227.73	-1829.92	-1015.86	-802.169	-1081.92	2192.265	3524.404	1802.406	1540.311	-58.5146	-460.722	74.52555
1946 Federal Surplus/Deficit	449.9231	-158.028	-793.026	550.6945	516.3972	2148.608	2706.17	3693.287	5169.923	3676.692	3274.462	1713.177	1218.253	-649.558	1570.961
1947 Federal Surplus/Deficit	319.3988	-188.123	2163.36	2887.306	2039.719	2422.19	1097.465	2570.728	4305.816	3360.677	2907.7	3223.226	1853.927	-8.38894	2048.527
1948 Federal Surplus/Deficit	2513.956	795.6024	1075.761	2754.226	-411.487	1012.127	1327.846	3511.733	6308.69	7038.334	3721.258	3227.236	1262.477	-178.391	2441.227
1949 Federal Surplus/Deficit	615.2127	-268.076	-181.103	689.6913	-575.787	3236.554	1385.901	4419.746	5189.525	3180.113	1131.915	2817.656	3268.56	710.6144	1639.549
1950 Federal Surplus/Deficit	342.59	-347.293	-1071.96	951.1756	2452.387	3994.583	3774.576	3612.447	4069.952	6126.072	3829.527	1506.003	-24.2637	-845.088	1994.694
1951 Federal Surplus/Deficit	1347.335	1292.334	3156.702	4268.45	4244.904	2656.722	3634.388	4149.663	5213.072	2543.907	3746.587	2430.724	2714.311	149.2228	2923.648
1952 Federal Surplus/Deficit	1970.547	-10.4032	1482.062	2528.689	960.7272	1408.836	3855.866	4320.157	6211.699	3481.33	2143.231	2916.784	2818.094	452.4184	2298.716
1953 Federal Surplus/Deficit	307.0074	-77.9902	-830.593	-100.222	2080.953	-379.848	-777.291	911.3294	3743.746	5886.763	3907.547	2933.734	1114.124	-304.62	1360.308
1954 Federal Surplus/Deficit	593.9506	-93.1885	520.9964	1558.227	2325.499	1001.565	3058.49	2385.916	4547.071	5384.934	4631.493	3060.982	1913.103	25.07749	2142.072
1955 Federal Surplus/Deficit	1189.286	418.4743	661.4953	-450.305	-1919.73	-1235.98	153.7659	-238.053	1676.472	6700.63	5702.532	4058.346	3026.777	2651.422	1574.56
1956 Federal Surplus/Deficit	1060.325	692.8828	2824.661	4808.089	1482.326	3368.018	3835.08	5813.248	6259.243	6690.262	4081.96	2832.725	3197.153	-83.5836	3251.94
1957 Federal Surplus/Deficit	717.657	-299.495	688.5152	1256.591	-1279.03	626.3578	4403.479	2694.228	5804.484	6401.066	2328.647	3190.941	2422.465	-32.8278	1880.626
1958 Federal Surplus/Deficit	448.5889	-169.139	-706.77	773.7672	1000.288	1225.501	390.0499	3295.523	5151.017	4863.161	1892.565	2072.514	671.6188	-391.889	1441.829
1959 Federal Surplus/Deficit	342.7097	315.4202	1447.114	4280.019	2673.309	1233.036	2567.581	1832.817	3437.835	5340.172	4439.874	2100.818	955.8975	-294.328	2245.31
1960 Federal Surplus/Deficit	3145.807	1783.156	2336.15	2532.558	-352.567	1050.71	5695.761	3662.83	2975.936	3678.369	2934.636	2933.327	2244.993	2429.775	2481.916
1961 Federal Surplus/Deficit	494.8952	42.40249	-212.918	1312.486	1703.359	1911.848	2607.656	2660.518	3704.387	6270.556	2477.247	3228.754	822.2772	-219.062	1845.4
1962 Federal Surplus/Deficit	409.1173	-188.705	-959.234	1189.641	-1310.15	-840.195	3998.078	4361.407	3130.174	2810.915	3160.432	2286.803	1327.529	-583.465	1067.119
1963 Federal Surplus/Deficit	914.9169	460.8187	1425.821	1519.413	250.1122	296.8272	244.1929	586.0325	3940.095	3438.302	2878.792	2747.736	1748.894	-346.988	1453.461
1964 Federal Surplus/Deficit	233.4972	-131.849	-589.555	1057.029	-544.216	-883.027	1318.444	1457.452	2720.273	6361.628	5218.031	3456.866	1962.861	99.68964	1469.943
1965 Federal Surplus/Deficit	1314.969	1.310239	3030.842	5324.24	3849.781	2914.792	2335.001	4241.841	4979.196	4229.904	2432.296	2966.475	2657.531	705.6329	2906.949
1966 Federal Surplus/Deficit	848.3113	49.70256	610.8395	2172.736	-805.442	-583.111	3046.396	1306.878	3044.427	2270.171	3251.046	3029.985	2425.341	55.53145	1318.209
1967 Federal Surplus/Deficit	304.9086	-190.043	-243.437	2586.323	3261.975	382.7075	1978.851	804.5321	1794.967	5916.328	4524.779	3272.345	1574.618	-484.755	1805.744
1968 Federal Surplus/Deficit	661.7284	-62.8816	448.4156	2074.273	1326.705	1193.109	-1088.81	686.2008	1917.556	4062.313	4175.6	3031.22	2329.767	159.3689	1536.282
1969 Federal Surplus/Deficit	1435.714	836.8379	1308.098	4134.151	2799.414	1665.509	4827.527	4388.808	6056.888	3933.834	3114.983	3193.973	2468.404	1111.822	2819.717
1970 Federal Surplus/Deficit	430.6928	-66.0884	-426.42	1671.405	1252.361	-361.482	-614.383	1498.056	2971.986	4407.749	1252.106	3122.505	1171.449	-306.977	1117.846
1971 Federal Surplus/Deficit	425.1293	29.98674	-553.27	3340.039	4828.03	2417.246	3068.941	3861.923	6411.727	6134.625	4406.742	1928.137	822.9476	-580.904	2641.694
1972 Federal Surplus/Deficit	511.8149	-51.9327	591.1063	3142.378	4435.949	5011.266	5335.603	2332.352	6113.326	6579.878	4840.558	3149.898	3351.355	323.8505	3215.233
1973 Federal Surplus/Deficit	680.4917	-185.673	826.8882	2526.979	-1962.1	-947.905	-1222.64	-1101.93	137.2662	1472.562	1587.579	3704.506	3047.173	779.4896	594.094
1974 Federal Surplus/Deficit	46.73363	-486.59	1629.711	5815.984	4787.95	3747.359	4623.653	5305.184	5528.579	6708.285	6081.424	1821.411	126.0158	-675.654	3260.159
1975 Federal Surplus/Deficit	193.6041	-165.333	-320.291	1944.831	820.039	2434.318	1414.607	1733.329	3867.011	4864.42	5103.041	3212.929	3323.109	727.6791	2025.942
1976 Federal Surplus/Deficit	1090.342	1104.797	3925.26	4166.253	2674.184	1840.538	4564.872	3411.279	5617.274	2936.886	4645.963	2030.903	1284.358	97.16789	2812.031
1977 Federal Surplus/Deficit	837.7759	-158.188	-685.996	141.8229	-2335.01	-1629.25	-1367.17	-1630.63	-5.71742	90.45631	409.2506	4623.523	4256.2	3282.918	240.7511
1978 Federal Surplus/Deficit	-124.507	-374.995	-515.912	1260.502	-303.068	2303.807	1427.345	2233.031	3388.914	2597.877	3266.207	1855.926	-54.2921	-700.786	1127.42
<b>Ranked Averages</b>															
Top Ten Percent	856.2355	289.6008	2246.604	4671.828	3760.182	3539.631	3952.745	4368.458	5618.683	5350.447	4236.565	2640.247	2409.273	83.89364	3111.586
Middle Eighty Percent	672.2384	19.92353	270.3359	1531.383	384.2663	710.9463	1716.794	2142.145	3677.386	3980.659	3048.838	2657.915	1546.132	67.2486	1532.893
Bottom Ten Percent	329.3516	-112.026	-822.201	-1375.21	-2062.92	-989.227	-614.363	-1122.09	-588.576	860.9753	1236.054	2339.502	986.4079	-447.289	-264.695

**Federal Surplus/Deficit by Water Year  
PNW Loads and Resource Study  
2006 - 2007 Fiscal Years  
[86] Rate Case 2000**

6/27/2005

Energy in Megawatts	Oct	Nov	Dec	Jan	Feb	Mar	1-Apr	16-Apr	May	Jun	Jul	1-Aug	16-Aug	Sep	Avg
1929 Federal Surplus/Deficit	1312.33	-737.835	-404.248	-2370.47	-1535.31	-1292.62	-867.483	-533.797	474.9327	3873.659	2543.86	4110.366	1437.372	-106.085	319.2868
1930 Federal Surplus/Deficit	663.5566	-55.4368	-212.23	-2331.45	-1997.04	-1508.57	124.4524	2528.792	-86.1555	1480.514	2809.783	1263.225	907.3032	-78.4761	91.36532
1931 Federal Surplus/Deficit	545.2399	25.14486	-10.4644	-3000.45	-3228.77	-1525.96	1381.845	-1192.12	2630.035	2036.004	2992.229	1959.947	1444.194	-522.9	144.7528
1932 Federal Surplus/Deficit	635.0926	-66.0197	-754.319	-2955.27	-1827.9	1615.963	5543.073	3873.472	5218.609	6190.916	4105.814	1498.77	580.2439	-636.493	1439.514
1933 Federal Surplus/Deficit	1413.339	-222.227	-172.532	4116.407	1118.898	-483.242	3544.741	-161.714	3416.056	9068.464	7571.418	2250.506	1909.559	232.0432	2485.848
1934 Federal Surplus/Deficit	2659.848	1931.165	4707.595	7357.691	4574.133	3741.649	7287.182	5422.016	5995.631	3181.97	1779.685	4146.196	4461.049	890.7195	3956.526
1935 Federal Surplus/Deficit	332.8531	-582.833	-592.738	3513.367	219.4488	743.7721	4333.95	753.5468	2586.226	5157.406	4298.124	418.1088	-70.9106	-447.4	1495.464
1936 Federal Surplus/Deficit	979.9552	-426.645	-296.893	-1805.79	-1317.62	-799.223	-87.1376	4401.898	5930.929	3923.259	3745.607	2515.234	125.218	-335.653	1089.628
1937 Federal Surplus/Deficit	698.5511	-322.011	-363.383	-2364.67	-2086.8	-1765.72	-1032.28	-2222.25	1966.121	2057.792	2504.968	1705.122	975.2321	-40.6147	-0.23776
1938 Federal Surplus/Deficit	809.6959	107.6896	217.4129	2719.231	-600.673	3081.476	3584.06	2270.517	6177.475	6027.041	3281.922	1821.378	1117.299	162.7344	2198.386
1939 Federal Surplus/Deficit	1425.01	-646.903	-528.764	-2306.18	1013.06	1046.75	2784.395	2002.096	3213.543	1360.759	4355.839	1395.477	267.3341	-191.564	997.1833
1940 Federal Surplus/Deficit	1359.278	-247.581	-415.112	-1307.48	-230.057	2810.694	2788.778	1948.812	1875.306	683.7834	2757.733	2379.104	794.4578	-71.3042	930.9029
1941 Federal Surplus/Deficit	1541.772	-365.519	-386.502	-1511.1	-1948.2	-203.772	-528.16	45.3864	1474.555	3514.005	1781.667	1734.082	565.3462	298.2033	425.2863
1942 Federal Surplus/Deficit	1421.386	123.6562	2439.618	2639.378	351.4193	-1320.13	1361.709	648.1939	3106.013	4705.033	5071.91	1328.88	712.4768	-196.21	1697.309
1943 Federal Surplus/Deficit	1240.184	-570.811	-440.156	2871.872	2739.9	3123.613	7333.722	5190.922	5838.093	6524.039	5368.105	4465.452	2340.271	487.5197	3070.628
1944 Federal Surplus/Deficit	1452.444	-668.876	-394.345	-2281.77	-1244.45	-1849.62	-819.807	-936.928	1038.13	2614.536	1723.058	3995.275	2620.781	-96.0754	226.8909
1945 Federal Surplus/Deficit	765.6053	1.131681	-772.239	-2890.19	-2635.93	-1476.14	-371.506	-360.972	3771.512	4358.295	3929.258	1505.203	523.5686	-607.767	424.3064
1946 Federal Surplus/Deficit	628.5524	-464.642	649.8542	3846.179	-179.038	2146.089	3685.73	3813.988	6774.957	6350.67	4494.602	2064.824	1556.757	77.03137	2490.409
1947 Federal Surplus/Deficit	1518.226	-323.518	2436.839	5160.607	3892.338	1841.333	3201.881	2182.861	5455.359	5845.761	4072.19	3392.303	651.4963	496.6935	2925.842
1948 Federal Surplus/Deficit	4167.819	1229.701	777.0628	5284.443	2343.901	746.4737	2123.532	3095.264	8564.186	11759.34	6424.49	3202.957	1155.093	273.9083	3863.312
1949 Federal Surplus/Deficit	1886.917	-522.931	-527.54	1428.788	-503.648	5109.166	4253.679	4495.035	5733.906	5686.066	1461.926	4244.28	4616.431	1078.491	2469.654
1950 Federal Surplus/Deficit	844.6904	-788.66	451.9666	3756.987	2281.414	4220.017	6011.695	3786.194	5251.417	10037.69	6262.569	194.9641	-324.142	-188.464	3080.332
1951 Federal Surplus/Deficit	2744.997	1853.46	3351.069	6263.279	5072.346	3756.731	6122.062	4701.96	6956.848	4941.706	5506.198	3474.41	2975.595	481.514	4130.43
1952 Federal Surplus/Deficit	3496.665	155.4827	1415.545	4764.19	1587.85	1399.883	6257.628	4607.978	7843.033	6286.269	3582.208	4238.342	3184.211	444.4398	3343.304
1953 Federal Surplus/Deficit	964.3773	-578.634	-246.204	-1199.12	4845.285	2563.895	1097.234	429.9957	3806.535	7124.942	5541.901	3259.506	808.2088	-150.098	2122.529
1954 Federal Surplus/Deficit	1858.288	-169.526	-75.9443	2043.879	5580.539	1601.735	3496.326	1943.526	5951.677	8820.577	6507.336	4357.164	3014.078	534.4479	3254.88
1955 Federal Surplus/Deficit	2606.476	615.5134	86.19078	1096.315	239.4776	1826.288	782.0594	2087.421	8015.742	7863.386	5113.963	4117.168	3294.515	2521.466	
1956 Federal Surplus/Deficit	2389.23	1048.839	3214.133	6512.507	3891.104	3896.797	5358.742	6234.849	8845.746	9836.818	5731.5	4114.029	3782.762	660.8694	4647.728
1957 Federal Surplus/Deficit	2015.739	-632.599	404.5622	840.8195	3424.367	1694.698	6197.979	1538.198	8489.698	7568.131	3329.919	4558.939	3153.842	346.7933	2933.884
1958 Federal Surplus/Deficit	1227.764	-676.3	-431.575	978.6304	4726.754	658.7105	1904.09	3090.172	7138.497	6640.908	2953.94	2245.627	961.1215	-22.1603	2274.64
1959 Federal Surplus/Deficit	1721.283	386.5378	1416.76	6170.598	4018.157	2554.877	3894.142	753.0414	5028.632	8044.644	5686.904	2164.764	1153.295	-32.0046	3248.251
1960 Federal Surplus/Deficit	5000.428	2338.729	1807.686	4649.343	588.1789	2027.121	7889.018	3395.045	3179.782	5237.988	4486.604	4293.696	2828.309	3142.516	3471.784
1961 Federal Surplus/Deficit	1756.278	-24.4072	-902.46	3169.524	4663.918	2412.994	3428.028	-322.44	5883.136	8777.284	3768.794	3756.98	842.8437	214.3176	2797.674
1962 Federal Surplus/Deficit	1487.109	-767.834	-676.721	3167.765	-977.265	-194.491	5018.029	3879.808	3532.915	3919.032	4859.921	2953.156	1244.615	-223.809	1722.869
1963 Federal Surplus/Deficit	2320.874	593.609	1336.139	3778.318	1391.653	31.86059	2366.278	1177.358	2860.527	5337.588	4617.137	4117.207	2303.42	-61.1683	2265.722
1964 Federal Surplus/Deficit	1383.33	-636.184	-790.703	653.2232	3433.357	-783.878	3219.188	122.4501	3339.712	8953.063	6924.676	3798.379	2114.405	948.8526	2337.722
1965 Federal Surplus/Deficit	2678.759	32.54997	3638.713	7257.683	4742.614	3841.958	3070.726	4970.663	6403.894	7302.082	4444.613	4337.349	3621.657	1381.634	4143.725
1966 Federal Surplus/Deficit	2173.51	106.7178	267.723	2662.838	2090.883	6.788151	5214.527	1134.492	2533.769	3083.537	4985.021	4369.428	3283.607	523.8164	2119.636
1967 Federal Surplus/Deficit	1297.073	-656.349	-262.647	4565.758	3830.531	1764.182	2809.876	-1487.13	3333.23	8284.834	6708.965	4065.498	1041.256	1.454488	2673.482
1968 Federal Surplus/Deficit	1946.129	-133.307	169.3769	3587.593	3726.656	2344.064	174.3737	-443.623	931.737	5509.519	4704.919	4410.535	3269.147	728.6427	2268.379
1969 Federal Surplus/Deficit	2829.359	1188.078	1064.21	6305.057	4081.314	2977.017	5362.668	5114.645	8293.277	7191.219	4557.351	4707.226	3314.092	2051.292	4148.957
1970 Federal Surplus/Deficit	1869.784	-673.667	-666.206	469.2809	3679.387	1012.941	1038.595	720.9818	3379.186	6072.453	3456.312	2645.358	269.2485	-45.2599	1740.942
1971 Federal Surplus/Deficit	1151.332	-750.74	629.184	5909.369	5671.83	3838.11	5760.99	3877.767	8625.798	8920.702	6175.797	2741.197	1018.584	-205.694	3888.746
1972 Federal Surplus/Deficit	1756.618	-140.625	177.0735	5598.5	5322.75	7760.81	6938.384	2140.791	8209.994	10021.92	7285.233	4701.628	4290.071	1095.05	4676.896
1973 Federal Surplus/Deficit	1937.188	-505.555	927.1282	573.9049	-308.511	-38.0118	-723.618	-1378.61	764.3153	2387.728	3227.531	4883.462	4519.892	1292.51	1159.066
1974 Federal Surplus/Deficit	925.7094	34.02711	2923.818	7923.366	5889.396	5602.626	6075.26	5629.349	7944.732	11090.24	8131.078	2279.728	226.5185	-486.856	4756.963
1975 Federal Surplus/Deficit	1202.089	-676.602	-404.86	2525.26	2714.322	3756.051	3146.342	1026.603	4451.529	7607.79	7206.41	4249.061	3707.895	749.2546	2933.016
1976 Federal Surplus/Deficit	2480.191	1489.638	4461.254	6503.09	4348.267	2224.611	6628.953	3578.948	7607.284	5357.879	6210.957	2813.343	2218.747	221.8782	4043.754
1977 Federal Surplus/Deficit	1758.144	-670.285	-323.452	-1912.2	-845.741	-2306.65	-1104.11	-544.807	804.6547	2172.834	1753.524	6024.462	4957.61	4327.549	785.4127
1978 Federal Surplus/Deficit	501.9365	-109.391	-15.8191	1903.677	-523.269	3116.83	4474.598	1865.684	4057.648	3987.534	4272.808	1425.759	628.6007	-929.287	1704.999
<b>Ranked Averages</b>															
Top Ten Percent	2115.935	432.574	2203.589	6719.422	4785.436	4815.842	5361.156	4818.059	7939.529	9088.454	6029.955	4027.992	3047.02	940.3979	4474.854
Middle Eighty Percent	1713.28	-48.916	456.7396	2327.106	1806.76	1445.509	3424.704	1946.424	4574.283	5935.679	4627.351	3112.949	1864.931	422.6377	2369.578
Bottom Ten Percent	934.4245	-351.803	-276.934	-2469.76	-2018.47	-1588.5	-242.655	-471.261	1204.613	2412.501	2514.779	2606.787	1476.976	-168.83	156.4116

**Federal Surplus/Deficit by Water Year  
PNW Loads and Resource Study  
2007 - 2008 Fiscal Years  
[86] Rate Case 2000**

6/27/2005

Energy in Megawatts	Oct	Nov	Dec	Jan	Feb	Mar	1-Apr	16-Apr	May	Jun	Jul	1-Aug	16-Aug	Sep	Avg
1929 Federal Surplus/Deficit	1266.877	-794.68	-473.076	-2574.53	-1646.45	-1469.38	-1035.2	273.0445	1303.999	3744.199	2423.06	3995.126	1319.819	-229.156	318.9382
1930 Federal Surplus/Deficit	617.3554	-111.175	-280.543	-2537.78	-2107.55	-1684.96	-43.1498	3337.412	745.8355	1350.073	2690.315	1146.061	789.6338	-201.538	91.2503
1931 Federal Surplus/Deficit	498.6111	-30.8651	-78.2431	-3207.43	-3339.36	-1702.19	1214.806	-384.184	3463.173	1906.224	2873.655	1843.395	1326.903	-646.059	144.8313
1932 Federal Surplus/Deficit	588.9885	-121.845	-822.865	-3162.06	-1938.53	1441.708	5379.397	4682.49	6052.554	6066.587	3989.252	1382.247	462.9244	-759.584	1440.645
1933 Federal Surplus/Deficit	1367.906	-278.528	-241.311	3914.261	1014.159	-655.301	3380.599	641.6871	4249.281	8946.847	7461.309	2133.653	1792.531	109.0981	2488.496
1934 Federal Surplus/Deficit	2616.056	1876.837	4642.995	7160.345	4473.427	3573.681	7127.918	6232.802	6833.784	3054.688	1660.45	4030.49	4345.606	768.2409	3960.742
1935 Federal Surplus/Deficit	286.8753	-638.93	-661.323	3311.113	114.1747	571.8882	4173.141	1557.706	3418.013	5031.407	4183.622	300.9253	-188.541	-570.384	1497.339
1936 Federal Surplus/Deficit	933.8998	-483.228	-364.924	-2012.64	-1425.28	-975.869	-254.711	5208.525	6765.68	3797.571	3627.84	2399.265	7.480619	-458.657	1090.389
1937 Federal Surplus/Deficit	652.3693	-377.73	-431.512	-2570.53	-2197.45	-1942.09	-1199.76	-1417.91	2797.062	1928.265	2385.005	1588.823	857.5918	-163.735	-0.49734
1938 Federal Surplus/Deficit	763.4072	51.57267	148.8569	2515.403	-706.491	2909.466	3419.811	3075.861	7014.208	5901.158	3165.37	1704.292	999.9022	39.69213	2200.215
1939 Federal Surplus/Deficit	1378.984	-703.914	-597.806	-2510.69	906.0459	870.9888	2617.59	2807.363	4047.273	1231.212	4238.538	1278.177	149.101	-314.723	997.6688
1940 Federal Surplus/Deficit	1313.806	-303.377	-483.834	-1510.67	-339.51	2636.205	2622.867	2755.964	2707.569	554.5768	2638.538	2263.116	676.9342	-194.395	931.5293
1941 Federal Surplus/Deficit	1496.504	-422.005	-455.34	-1716.37	-2059.14	-379.222	-696.316	852.8009	2307.363	3384.565	1661.13	1617.054	447.6088	175.1319	425.2661
1942 Federal Surplus/Deficit	1375.69	67.2478	2373.929	2435.006	245.7855	-1494.26	1194.02	1455.152	3938.043	4578.703	4956.679	1211.891	594.9434	-319.592	1698.77
1943 Federal Surplus/Deficit	1194.517	-627.599	-510.014	2666.596	2632.643	2953.809	7171.6	5998.618	6674.855	6398.535	5251.785	4349.736	2223.029	364.3316	3072.579
1944 Federal Surplus/Deficit	1406.7	-726.023	-463.649	-2485.85	-1355.68	-2026.54	-987.72	-130.155	1868.352	2483.843	1602.288	3879.2	2503.695	-219.361	226.3823
1945 Federal Surplus/Deficit	719.2486	-54.9463	-840.533	-3098.36	-2746.65	-1652.61	-539.04	442.332	4603.415	4230.789	3811.422	1388.059	405.8312	-731.042	424.11
1946 Federal Surplus/Deficit	581.943	-521.09	581.2982	3641.982	-285.643	1973.214	3520.713	4621.645	7612.467	6225.943	4379.06	1948.029	1439.214	-46.0109	2492.33
1947 Federal Surplus/Deficit	1472.403	-380.344	2369.119	4958.44	3788.998	1671.072	3037.388	2989.235	6290.479	5721.841	3955.696	3276.315	533.9241	373.7289	2928.264
1948 Federal Surplus/Deficit	4125.524	1174.779	709.0413	5082.043	2238.986	574.5995	1957.835	3901.93	9401.755	11641.25	6312.68	3086.269	1037.18	150.9049	3866.931
1949 Federal Surplus/Deficit	1841.697	-579.621	-597.213	1224.921	-610.011	4936.417	4088.137	5303.664	6567.724	5560.231	1343.109	4128.505	4500.919	956.1384	2471.167
1950 Federal Surplus/Deficit	797.8478	-846.458	383.4883	3554.053	2175.984	4051.107	5847.29	4593.93	6086.265	9916.995	6148.699	77.28501	-442.317	-311.672	3082.867
1951 Federal Surplus/Deficit	2700.69	1798.101	3283.893	6063.25	4969.472	3587.928	5959.358	5511.367	7794.009	4814.909	5392.57	3358.072	2859.519	358.7146	4133.975
1952 Federal Surplus/Deficit	3453.408	98.99651	1347.524	4561.907	1481.06	1229.039	6093.884	5415.091	8681.088	6161.357	3465.821	4122.587	3067.679	321.9417	3345.98
1953 Federal Surplus/Deficit	918.2635	-635.091	-314.643	-1406.58	4739.029	2393.644	934.3644	1233.231	4640.227	7000.643	5427.05	3142.916	689.9563	-273.383	2124.116
1954 Federal Surplus/Deficit	1813.204	-225.701	-145.006	1840.527	5477.626	1432.009	3329.667	2747.412	6788.235	8699.903	6395.021	4241.419	2897.079	411.3959	3257.917
1955 Federal Surplus/Deficit	2562.569	559.931	18.06231	892.9926	131.5116	-1742.93	1662.272	1586.811	2918.809	7892.153	7753.442	4999.403	4001.967	3173.66	2523.786
1956 Federal Surplus/Deficit	2345.002	993.1886	3146.734	6312.77	3789.445	3725.059	5195.27	7044.868	9684.53	9716.27	5617.192	3998.284	3666.541	538.2061	4651.74
1957 Federal Surplus/Deficit	1970.762	-689.367	335.4619	637.6522	3318.753	1520.103	6038.394	2341.754	9327.84	7444.998	3212.006	4443.233	3037.339	223.8288	2936.033
1958 Federal Surplus/Deficit	1181.738	-732.845	-501.268	774.9287	4621.665	487.0501	1737.683	3896.148	7974.618	6516.725	2128.58	443.1703	843.1703	-145.3	2276.279
1959 Federal Surplus/Deficit	1676.258	330.11	1348.865	5969.666	3915.973	2384.966	3730.447	1558.192	5863.908	7923.231	5572.479	2048.125	1035.606	-155.125	3251.376
1960 Federal Surplus/Deficit	4958.979	2284.73	1740.714	4447.507	483.2643	1854.927	7730.23	4202.838	4013.027	5112.192	4372.297	4178.155	2711.378	3021.291	3475.019
1961 Federal Surplus/Deficit	1710.864	-80.6504	-971.745	2966.542	4562.327	2242.335	3265.625	481.1069	6719.85	8657.27	3651.901	3640.788	724.8245	91.19753	2800.505
1962 Federal Surplus/Deficit	1441.879	-824.602	-746.035	2964.316	-1083.03	-368.688	4853.741	4687.281	4366.432	3792.595	4742.864	2837.022	1127.325	-346.919	1724.291
1963 Federal Surplus/Deficit	2275.985	537.667	1268.691	3575.783	1285.68	-141.287	2199.765	1984.724	3692.576	5211.102	4501.672	4001.666	2186.247	-184.269	2267.483
1964 Federal Surplus/Deficit	1337.683	-692.962	-860.134	449.638	3328.471	-957.122	3051.887	925.2875	4172.5	8831.135	6813.031	3682.469	1996.891	826.1504	2339.721
1965 Federal Surplus/Deficit	2635.104	-23.6349	3570.749	7058.179	4640.149	3670.677	2904.465	5779.234	7240.006	7177.442	4328.906	4221.798	3505.018	1259.35	4146.849
1966 Federal Surplus/Deficit	2128.776	50.37735	198.9434	2460.137	1985.939	-166.796	5051.337	1940.682	3366.984	2958.207	4869.091	4253.955	3166.919	400.7547	2121.572
1967 Federal Surplus/Deficit	1251.552	-712.913	-331.543	4363.728	3727.764	1595.174	2645.957	-684.82	4166.513	8162.605	6597.592	3949.354	923.5868	-121.5	2676.334
1968 Federal Surplus/Deficit	1901.064	-189.754	100.5001	3383.648	3622.956	2174.143	9.327438	361.5852	1762.387	5384.277	4590.194	4295.082	3152.536	606.0669	2270.396
1969 Federal Surplus/Deficit	2785.422	1132.632	996.4706	6103.736	3980.394	2804.774	5199.896	5924.353	9131.731	7068.348	4441.518	4591.782	3197.686	1929.357	4152.603
1970 Federal Surplus/Deficit	1824.759	-730.027	-735.773	263.7424	3571.606	841.4169	874.1614	1526.696	4211.002	5945.2	3339.03	2528.942	151.5694	-168.322	1741.943
1971 Federal Surplus/Deficit	1105.228	-807.868	560.1809	5706.59	5570.589	3666.255	5599.121	4685.92	9463.756	8797.812	6061.684	2624.907	900.5843	-329.096	3891.7
1972 Federal Surplus/Deficit	1711.145	-197.441	107.808	5395.867	5220.867	7595.524	6777.71	2946.797	9047.67	9900.63	7174.987	4586.408	4174.316	972.4646	4681.011
1973 Federal Surplus/Deficit	1891.968	-562.275	857.9599	368.5511	-416.234	-212.879	-890.929	-572.587	1594.868	2258.978	3108.646	4768.708	4404.778	1170.197	1159.564
1974 Federal Surplus/Deficit	879.1389	-23.1199	2857.565	7725.796	5790.206	5432.22	5912.41	6438.591	8782.213	10970.25	8020.871	2162.7	108.4798	-610.112	4761.343
1975 Federal Surplus/Deficit	1156.16	-733.583	-474.456	2322.015	2607.493	3586.742	2980.441	1831.19	5285.211	7483.21	7094.464	4133.607	3592.567	627.1064	2935.272
1976 Federal Surplus/Deficit	2434.971	1434.114	4394.398	6303.091	4245.675	2053.786	6466.394	4386.324	8444.523	5230.839	6099.195	2696.83	2101.642	98.71926	4047.076
1977 Federal Surplus/Deficit	1713.322	-727.267	-392.64	-2116.44	-956.671	-2483.39	-1271.85	263.3751	1636.238	2043.005	1633.269	5909.941	4842.749	4207.266	785.7334
1978 Federal Surplus/Deficit	455.5312	-165.809	-85.5899	1698.42	-630.797	2943.343	4312.604	2672.195	4892.011	3859.873	4157.179	1309.071	511.1937	-1052.66	1706.169
<b>Ranked Averages</b>															
Top Ten Percent	2071.162	376.3249	2135.865	6519.27	4684.212	4645.65	5197.95	5626.768	8777.23	8966.588	5916.695	3912.194	2930.408	817.8532	4478.709
Middle Eighty Percent	1668.023	-105.203	388.2481	2123.625	1700.959	1273.167	3260.303	2752.588	5408.684	5810.628	4511.773	2996.753	1747.834	299.8231	2371.539
Bottom Ten Percent	888.3826	-408.095	-345.404	-2675.22	-2129.3	-1765.03	-410.204	335.642	2035.684	2282.521	2394.864	2490.521	1359.528	-291.97	156.181

**Federal Surplus/Deficit by Water Year  
PNW Loads and Resource Study  
2008 - 2009 Fiscal Years  
[86] Rate Case 2000**

6/27/2005

Energy in Megawatts	Oct	Nov	Dec	Jan	Feb	Mar	1-Apr	16-Apr	May	Jun	Jul	1-Aug	16-Aug	Sep	Avg
1929 Federal Surplus/Deficit	1410.669	-674.285	-371.291	-2513.22	-1701.4	-1419.26	-978.736	-640.763	396.5999	3979.943	2661.677	4199.015	1526.708	4.743222	318.9409
1930 Federal Surplus/Deficit	760.8361	9.764863	-178.545	-2477.48	-2162.28	-1634.64	13.32644	2424.43	-160.144	1585.36	2929.583	1349.95	996.5234	32.36178	91.41094
1931 Federal Surplus/Deficit	641.8781	89.92864	24.03678	-3147.43	-3394.05	-1651.77	1271.448	-1297.5	2557.757	2141.852	3113.379	2047.285	1533.793	-412.159	145.079
1932 Federal Surplus/Deficit	732.5081	-0.98325	-720.955	-3101.98	-1993.24	1492.85	5437.409	3769.576	5147.439	6304.78	4229.929	1586.137	669.814	-525.685	1441.344
1933 Federal Surplus/Deficit	1511.717	-157.91	-139.527	3976.403	962.1258	-603.04	3438.542	-273.85	3343.875	9186.226	7705.086	2337.542	1999.421	342.9976	2489.898
1934 Federal Surplus/Deficit	2760.606	1998.32	4746.518	7224.489	4423.114	3627.72	7187.931	5320.695	5930.748	3291.51	1899.854	4234.379	4552.495	1002.14	3962.731
1935 Federal Surplus/Deficit	430.4533	-518.195	-559.461	3373.236	61.84054	624.2459	4232.688	642.5472	2511.927	5268.822	4425.319	504.8149	18.3484	-336.485	1498.408
1936 Federal Surplus/Deficit	1077.439	-362.697	-262.771	-1952.6	-1478.63	-925.736	-198.264	4294.455	5860.973	4035.141	3867.963	2603.155	214.3702	-224.757	1090.932
1937 Federal Surplus/Deficit	795.8404	-256.8	-329.397	-2510.01	-2252.17	-1891.75	-1143.17	-2332.93	1890.558	2163.979	2624.039	1792.712	1064.481	70.1648	-0.41728
1938 Federal Surplus/Deficit	906.8296	172.2984	250.6994	2576.778	-759.078	2961.648	3477.687	2161.208	6110.453	6138.583	3406.047	1908.182	1206.792	273.5917	2201.232
1939 Federal Surplus/Deficit	1522.504	-583.606	-496.148	-2449.6	852.9635	921.539	2674.319	1892.729	3142.139	1466.946	4478.904	1482.067	355.9906	-80.8238	998.1145
1940 Federal Surplus/Deficit	1457.607	-182.496	-382.02	-1448.97	-393.73	2687.27	2679.985	1842.225	1801.706	790.4665	2877.941	2467.005	883.8238	39.50451	931.9831
1941 Federal Surplus/Deficit	1640.373	-301.464	-353.595	-1655.63	-2114.04	-328.487	-640.083	-60.7639	1401.781	3620.329	1899.863	1820.943	654.4984	409.0315	425.4554
1942 Federal Surplus/Deficit	1519.355	187.7986	2477.035	2496.109	193.2571	-1442.94	1250.408	541.2953	3032.073	4815.944	5198.026	1415.78	801.833	-85.6925	1699.635
1943 Federal Surplus/Deficit	1338.221	-507.194	-408.783	2727.222	2579.269	3006.954	7230.185	5084.956	5771.12	6636.116	5492.54	4553.625	2429.919	598.2312	3073.587
1944 Federal Surplus/Deficit	1550.365	-605.783	-362.118	-2424.56	-1410.69	-1976.45	-931.399	-1044.02	961.5169	2719.013	1840.904	4083.089	2710.584	14.53897	226.3223
1945 Federal Surplus/Deficit	862.6419	65.79885	-738.506	-3038.93	-2801.45	-1602.34	-482.544	-473.196	3697.377	4467.447	4051.506	1591.948	612.7207	-497.143	424.2383
1946 Federal Surplus/Deficit	725.2099	-400.529	683.1504	3703.133	-338.599	2024.969	3578.2	3708.061	6709.073	6463.942	4620.243	2151.919	1646.104	187.8887	2493.385
1947 Federal Surplus/Deficit	1615.991	-259.978	2471.243	5020.524	3736.42	1724.071	3095.137	2075.107	5385.928	5960.229	4196.421	3480.204	740.8137	607.6285	2929.509
1948 Federal Surplus/Deficit	4270.754	1295.971	811.117	5143.982	2186.769	626.8989	2015.089	2987.88	8498.292	11881.81	6555.641	3290.159	1244.07	384.8045	3868.72
1949 Federal Surplus/Deficit	1985.576	-459.177	-495.847	1286.295	-662.899	4988.143	4145.342	4390.537	5662.512	5797.676	1582.707	4332.395	4707.808	1190.038	2471.922
1950 Federal Surplus/Deficit	940.9981	-726.519	485.3794	3615.855	2123.505	4104.631	5904.903	3680.375	5181.607	10156.68	6390.629	281.1746	-235.427	-77.7723	3084.209
1951 Federal Surplus/Deficit	2844.978	1919.06	3386.27	6126.238	4918.032	3641.539	6017.768	4598.589	6890.372	5051.897	5634.676	3561.962	3066.409	592.6142	4135.67
1952 Federal Surplus/Deficit	3598.171	219.5182	1449.59	4623.972	1427.968	1281.795	6151.721	4501.137	7777.858	6399.249	3706.595	4326.477	3274.568	555.8413	3347.292
1953 Federal Surplus/Deficit	1061.764	-514.521	-212.684	-1346.9	4686.161	2446.701	992.9397	317.6161	3735.015	7238.797	5668.552	3346.805	896.8459	-39.4834	2125.042
1954 Federal Surplus/Deficit	1957.151	-105.014	-43.377	1902.096	5426.293	1485.3	3386.415	1832.03	5884.413	8939.797	6637.738	4445.308	3103.969	645.2955	3259.463
1955 Federal Surplus/Deficit	2707.06	680.8802	120.1284	954.6201	78.02101	-1692.28	1720.351	671.9539	2012.509	8130.676	7997.296	5203.293	4208.857	3407.559	2524.891
1956 Federal Surplus/Deficit	2489.338	1114.07	3248.965	6375.855	3738.665	3777.251	5253.33	6132.284	8781.407	9956.018	5858.948	4202.174	3873.43	772.1057	4653.603
1957 Federal Surplus/Deficit	2114.748	-568.971	437.0129	699.3476	3266.254	1571.09	6098.262	1426.226	8424.523	7683.716	3452.061	4647.122	3244.229	457.7284	2937.119
1958 Federal Surplus/Deficit	1325.267	-612.323	-399.921	836.352	4569.321	539.4272	1794.548	2981.757	7070.504	6754.967	3074.906	2332.466	1020.06	88.59984	2277.21
1959 Federal Surplus/Deficit	1820.244	450.6511	1450.94	6032.246	3864.999	2438.12	3788.546	643.4704	4959.454	8162.745	5814.186	2252.014	1242.496	78.77495	3252.969
1960 Federal Surplus/Deficit	5104.52	2406.34	1843.227	4509.795	431.0857	1907.09	7790.496	3289.332	3107.601	5349.666	4614.081	4382.044	2918.268	3255.191	3476.556
1961 Federal Surplus/Deficit	1854.684	40.017	-870.175	3028.344	4511.596	2295.159	3324.375	-434.353	5816.115	8897.397	3892.442	3844.678	931.7141	325.0971	2801.99
1962 Federal Surplus/Deficit	1585.797	-704.158	-644.494	3025.885	-1135.59	-317.389	4911.529	3773.59	3461.152	4029.758	4983.327	3040.912	1334.214	-113.02	1725.116
1963 Federal Surplus/Deficit	2420.01	658.4414	1371.02	3637.74	1232.898	-89.512	2256.698	1071.092	2786.586	5448.246	4742.903	4205.556	2393.136	49.63066	2268.434
1964 Federal Surplus/Deficit	1481.397	-572.538	-758.641	511.1683	3276.37	-905.377	3108.335	9.458356	3266.86	9070.29	7056.079	3886.358	2203.781	1060.05	2340.802
1965 Federal Surplus/Deficit	2779.702	97.05194	3672.679	7121.323	4588.825	3723.131	2961.359	4866.019	6335.93	7415.392	4569.991	4425.688	3711.908	1493.249	4148.314
1966 Federal Surplus/Deficit	2272.889	170.967	300.7082	2522.007	1933.799	-115.226	5109.698	1026.525	2461.578	3195.973	5110.137	4457.845	3373.809	634.6543	2122.619
1967 Federal Surplus/Deficit	1395.324	-592.392	-229.827	4425.909	3676.528	1648.834	2704.075	-1600.83	3261.097	8401.711	6840.786	4153.244	1130.476	112.3992	2677.821
1968 Federal Surplus/Deficit	2045.021	-69.2133	202.1969	3444.945	3571.253	2227.356	66.9698	-553.039	855.7559	5622.052	4831.794	4498.971	3359.426	839.9665	2271.441
1969 Federal Surplus/Deficit	2929.894	1253.611	1098.712	6166.15	3929.964	2856.85	5258.296	5011.711	8228.618	7307.241	4682.574	4795.671	3404.576	2163.257	4154.333
1970 Federal Surplus/Deficit	1968.745	-609.398	-634.329	324.2523	3518.038	893.9107	932.0273	612.3339	3304.877	6181.896	3579.367	2732.832	358.459	65.5779	1742.564
1971 Federal Surplus/Deficit	1248.728	-687.628	661.8097	5768.286	5519.878	3718.447	5657.949	3772.559	8560.245	9036.481	6303.527	2828.797	1107.474	-95.1967	3893.164
1972 Federal Surplus/Deficit	1854.927	-77.0752	209.3299	5457.698	5169.932	7650.583	6837.053	2032.445	8144.091	10139.91	7418.706	4790.297	4381.206	1206.364	4682.914
1973 Federal Surplus/Deficit	2035.877	-441.85	959.5303	429.1872	-469.637	-161.863	-834.268	-1486.79	688.1885	2495.101	3348.224	4972.597	4611.668	1404.096	1159.871
1974 Federal Surplus/Deficit	1022.416	97.08109	2960.36	7789.785	5740.457	5485.024	5970.703	5525.667	7878.605	11210.01	8264.58	2366.589	315.3694	-376.212	4763.439
1975 Federal Surplus/Deficit	1299.758	-613.246	-373.05	2383.633	2554.42	3640.188	3037.568	916.2158	4379.969	7721.169	7337.347	4337.497	3799.457	861.0059	2936.38
1976 Federal Surplus/Deficit	2578.86	1555.043	4496.834	6366.069	4194.498	2106.503	6524.863	3472.604	7540.836	5467.701	6342.204	2900.72	2308.531	332.6188	4048.711
1977 Federal Surplus/Deficit	1857.406	-606.939	-291.04	-2055.18	-1011.53	-2433.18	-1215.38	-649.801	730.0925	2278.603	1872.138	6113.831	5049.639	4441.166	785.8896
1978 Federal Surplus/Deficit	598.9245	-45.2099	15.60156	1759.096	-684.23	2994.865	4371.451	1758.135	3987.129	4096.443	4398.332	1512.96	718.0833	-818.76	1706.875
<b>Ranked Averages</b>															
Top Ten Percent	2215.255	496.9476	2238.009	6582.162	4633.569	4698.568	5256.149	4713.625	7873.73	9205.714	6158.96	4116.084	3137.298	1051.753	4480.52
Middle Eighty Percent	1811.903	15.4239	490.1215	2185.136	1648.35	1325.247	3318.097	1838.341	4503.794	6048.425	4752.933	3200.643	1954.724	533.7226	2372.58
Bottom Ten Percent	1031.918	-287.435	-243.463	-2614.54	-2184.12	-1714.77	-353.707	-578.156	1129.257	2518.03	2633.917	2694.411	1566.418	-58.07	156.2672