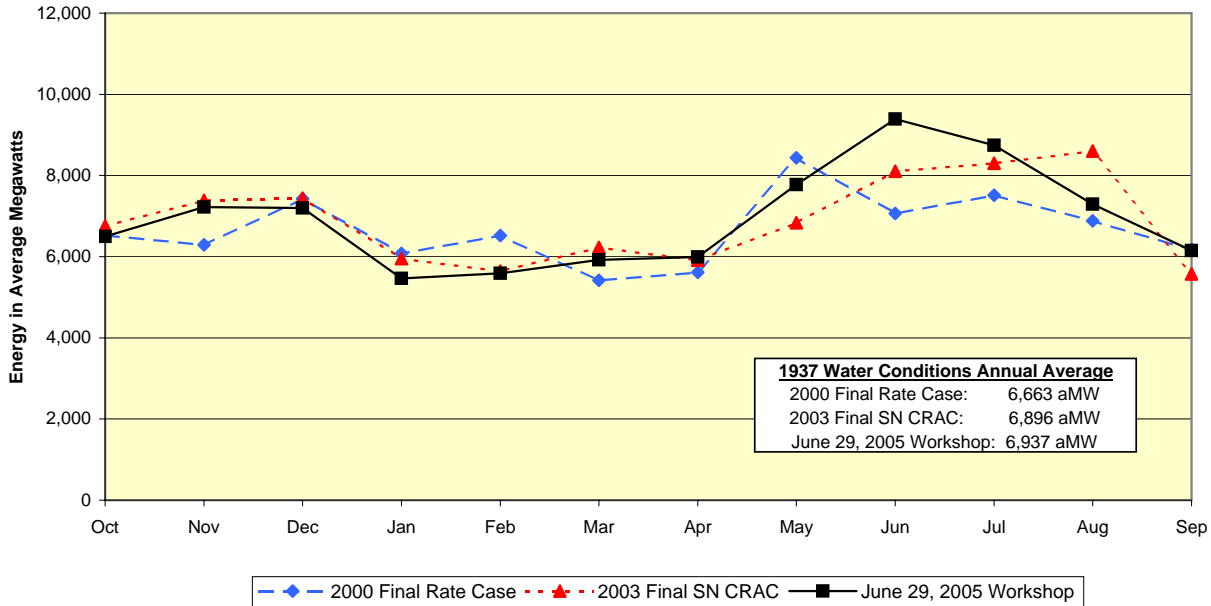


**1937 WY Avg Bar Graph comparison by month
Rate Case Comparison For FY 2007
1937 Water Conditions**

Energy in Megawatts	Oct	Nov	Dec	Jan	Feb	Mar	Apr	May	Jun	Jul	Aug	Sep	Average
2000 Final Rate Case	6526	6288	7429	6081	6524	5419	5611	8438	7062	7517	6882	6174	6663
2003 Final SN CRAC	6757	7389	7442	5954	5648	6231	5913	6833	8108	8298	8602	5574	6896
June 29, 2005 Workshop	6500	7223	7198	5465	5592	5924	5991	7777	9391	8742	7296	6149	6937

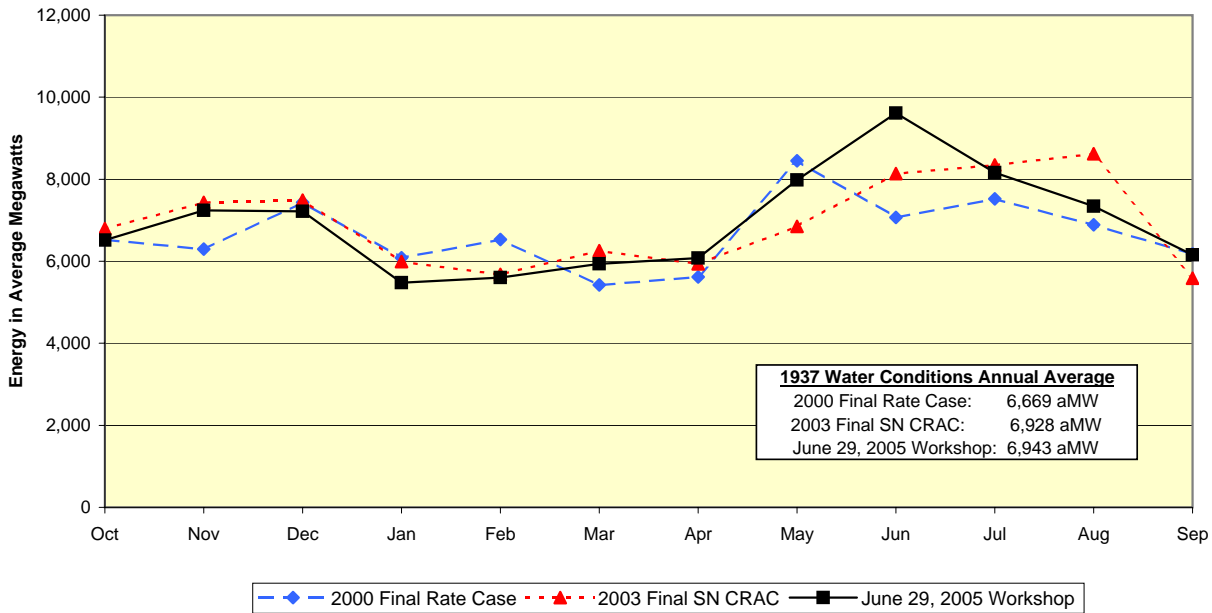
**WP-07 Power Rate Case Workshop
FY 2007
Federal System Regulated Plus Independent Hydro Comparison
Under 1937-Water Conditions**



**1937 WY Avg Bar Graph comparison by month
Rate Case Comparison For FY 2008
1937 Water Conditions**

Energy in Megawatts	Oct	Nov	Dec	Jan	Feb	Mar	Apr	May	Jun	Jul	Aug	Sep	Average
2000 Final Rate Case	6532	6296	7437	6089	6529	5424	5618	8447	7069	7522	6886	6176	6669
2003 Final SN CRAC	6793	7437	7489	5988	5680	6259	5940	6849	8140	8346	8624	5588	6928
June 29, 2005 Workshop	6515	7238	7214	5478	5605	5938	6080	7981	9609	8160	7345	6152	6943

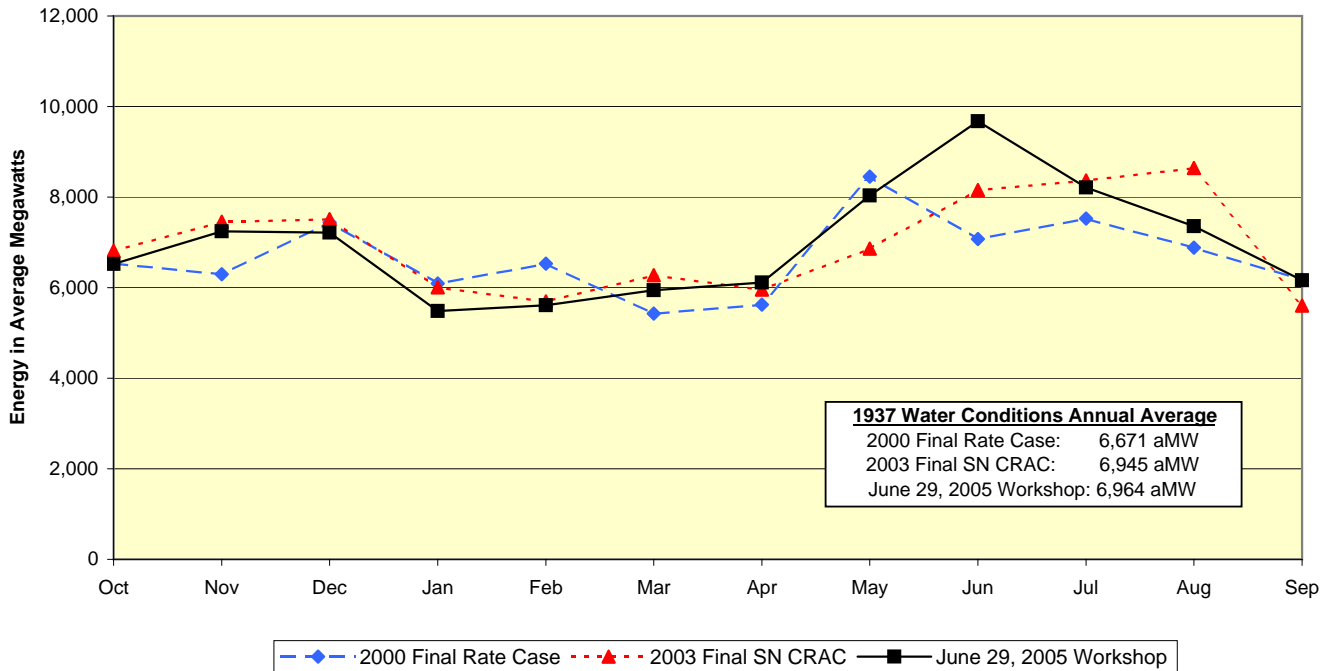
**WP-07 Power Rate Case Workshop
FY 2008
Federal System Regulated Plus Independent Hydro Comparison
Under 1937-Water Conditions**



1937 WY Avg Bar Graph comparison by month
Rate Case Comparison For FY 2009
1937 Water Conditions

Energy in Megawatts	Oct	Nov	Dec	Jan	Feb	Mar	Apr	May	Jun	Jul	Aug	Sep	Average
2000 Final Rate Case	6534	6299	7441	6093	6531	5426	5622	8450	7072	7525	6886	6176	6671
2003 Final SN CRAC	6810	7456	7509	6005	5695	6276	5955	6861	8157	8370	8646	5602	6945
June 29, 2005 Workshop	6519	7244	7219	5482	5609	5942	6111	8033	9672	8212	7360	6161	6964

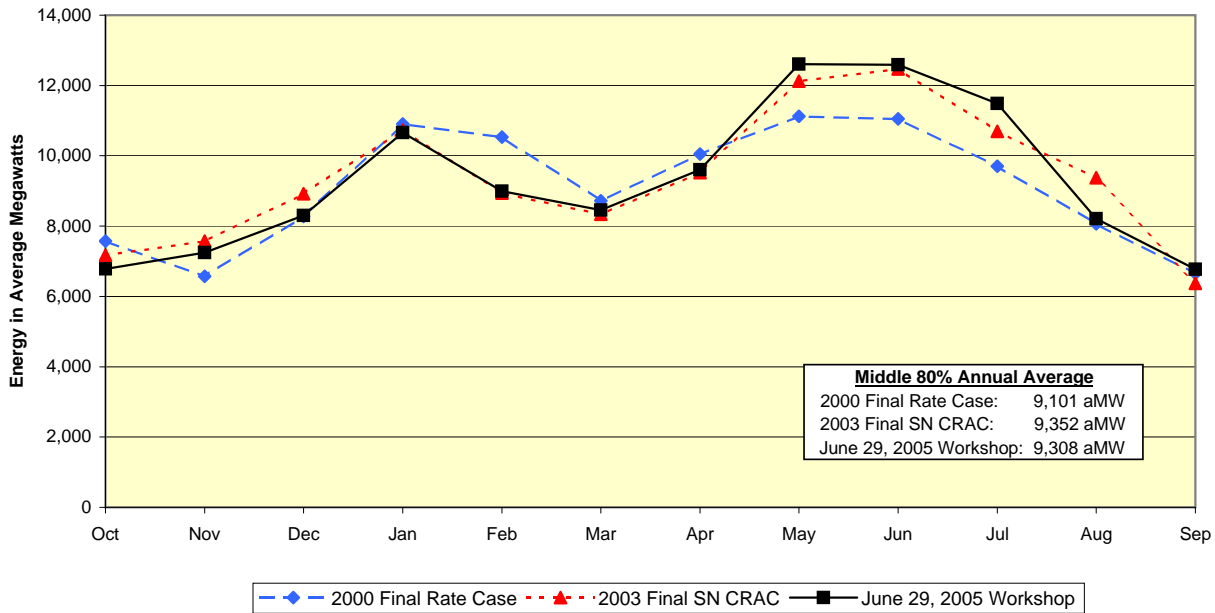
WP-07 Power Rate Case Workshop
FY 2009
Federal System Regulated Plus Independent Hydro Comparison
Under 1937-Water Conditions



**50 WY Avg Bar Graph comparison by month
Rate Case Comparison For FY 2007
Average Water Conditions**

Energy in Megawatts	Oct	Nov	Dec	Jan	Feb	Mar	Apr	May	Jun	Jul	Aug	Sep	Average
2000 Final Rate Case	7570	6569	8273	10909	10530	8723	10049	11122	11053	9701	8064	6650	9101
2003 Final SN CRAC	7171	7574	8919	10730	8938	8336	9524	12122	12473	10694	9374	6368	9352
June 29, 2005 Workshop	6777	7245	8301	10659	8994	8458	9602	12607	12585	11488	8207	6776	9308

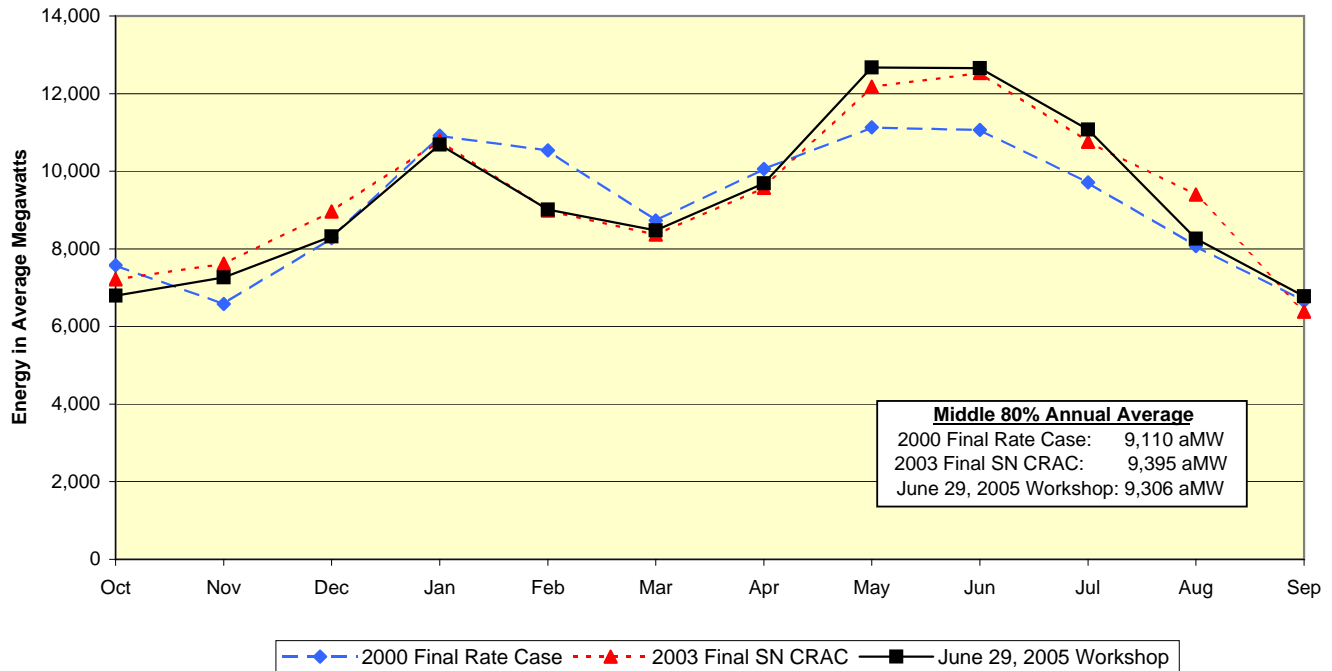
**WP-07 Power Rate Case Workshop
FY 2007
Federal System Regulated Plus Independent Hydro Comparison
Middle 80% Averaged Over the 50-Water Conditions**



50 WY Avg Bar Graph comparison by month
Rate Case Comparison For FY 2008
Average Water Conditions

Energy in Megawatts	Oct	Nov	Dec	Jan	Feb	Mar	Apr	May	Jun	Jul	Aug	Sep	Average
2000 Final Rate Case	7577	6576	8280	10920	10540	8733	10059	11134	11064	9711	8068	6653	9110
2003 Final SN CRAC	7211	7615	8959	10786	8984	8370	9569	12174	12530	10757	9398	6384	9395
June 29, 2005 Workshop	6793	7261	8321	10683	9015	8479	9684	12674	12653	11071	8261	6780	9306

WP-07 Power Rate Case Workshop
FY 2008
Federal System Regulated Plus Independent Hydro Comparison
Middle 80% Averaged Over the 50-Water Conditions



50 WY Avg Bar Graph comparison by month
Rate Case Comparison For FY 2009
Average Water Conditions

Energy in Megawatts	Oct	Nov	Dec	Jan	Feb	Mar	Apr	May	Jun	Jul	Aug	Sep	Average
2000 Final Rate Case	7580	6579	8284	10924	10544	8736	10063	11139	11069	9715	8068	6653	9113
2003 Final SN CRAC	7231	7634	8980	10813	9007	8391	9591	12201	12556	10783	9423	6400	9417
June 29, 2005 Workshop	6798	7266	8327	10690	9020	8483	9783	12807	12735	11141	8278	6790	9343

WP-07 Power Rate Case Workshop
FY 2009
Federal System Regulated Plus Independent Hydro Comparison
Middle 80% Averaged Over the 50-Water Conditions

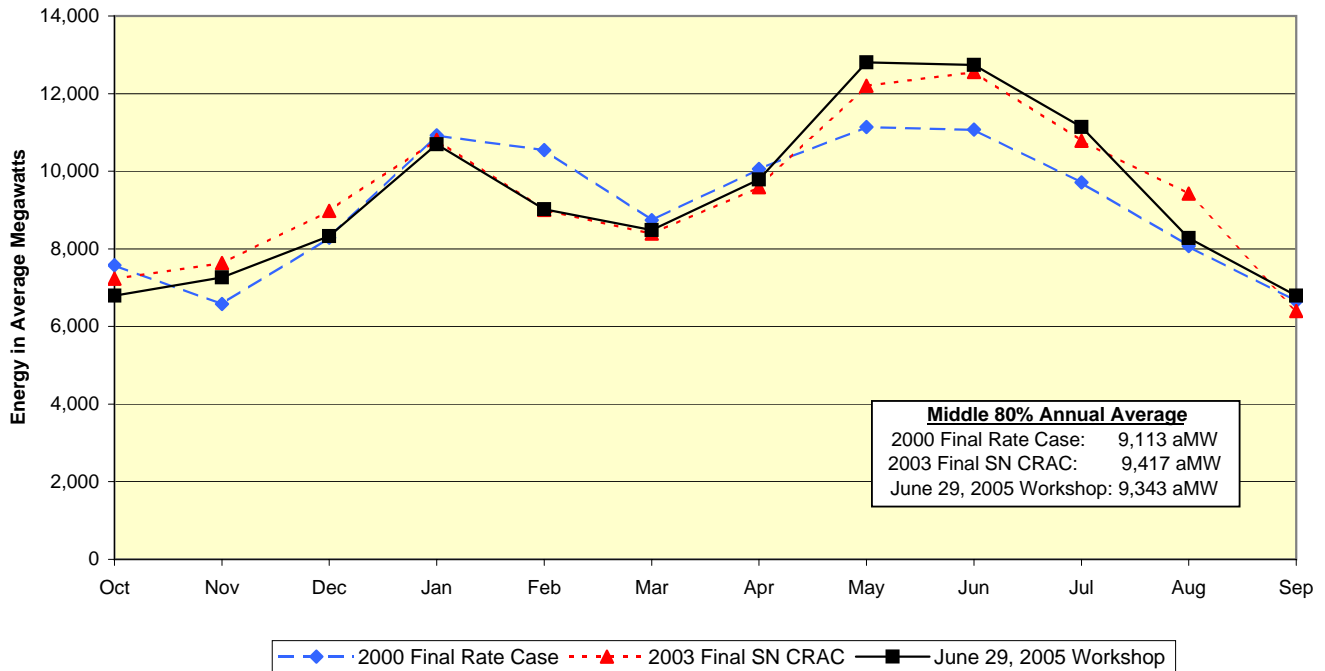


Table A-27 Federal Gross Hydro - 50 Water Years
PNW Loads and Resource Study
2006 - 2007 Fiscal Years
[30] 2007 Initial Rate Case

7/13/2005

Energy in Megawatts	Oct	Nov	Dec	Jan	Feb	Mar	1-Apr	16-Apr	May	Jun	Jul	1-Aug	16-Aug	Sep	Avg
Federal Gross Hydro for 1929	6032	7209	6820	7436	5608	6561	5992	5619	6548	10680	9056	9968	6167	6257	7173
Federal Gross Hydro for 1930	6548	7343	7339	5563	6885	6421	6214	5935	6296	9336	9662	7218	6594	6140	7043
Federal Gross Hydro for 1931	6572	7313	6933	5629	5569	6145	6997	5348	6178	8894	9273	7830	6984	5951	6836
Federal Gross Hydro for 1932	6194	7127	6994	5727	5319	8025	10297	13667	13410	13594	10876	7385	7104	6318	8567
Federal Gross Hydro for 1933	6529	6722	7882	12136	9615	7273	7668	9174	11239	14285	14147	8074	7566	6799	9406
Federal Gross Hydro for 1934	7165	8754	14379	15845	13514	10840	13526	12811	12975	8217	9762	10200	9307	6717	10924
Federal Gross Hydro for 1935	6260	6653	6851	11297	11654	5994	7744	9735	10753	11161	10778	6936	6154	5900	8549
Federal Gross Hydro for 1936	6383	7164	7104	6075	5727	6438	7497	10944	14025	11356	9323	9683	6678	6237	8103
Federal Gross Hydro for 1937	6500	7223	7198	5465	5592	5924	6157	5826	7777	9391	8742	7725	6868	6149	6937
Federal Gross Hydro for 1938	6609	6906	7403	11487	7812	9396	9590	11368	14197	12741	10841	7089	6727	6059	9236
Federal Gross Hydro for 1939	6546	7160	7179	8806	5560	6937	7106	9581	12165	8666	9768	7229	6089	6642	7869
Federal Gross Hydro for 1940	6736	7101	7472	8088	6937	9400	8613	9905	11107	9823	9072	8232	7049	6083	8227
Federal Gross Hydro for 1941	6616	7073	7470	8197	5795	6494	6500	5768	8718	9066	8902	6395	6238	6044	7235
Federal Gross Hydro for 1942	6381	6713	9457	11511	7756	5218	6783	9609	10826	12811	11917	6407	6732	6770	8677
Federal Gross Hydro for 1943	6460	6903	7253	10907	10570	10748	13826	13564	13758	13225	12612	9539	7517	6206	10072
Federal Gross Hydro for 1944	6399	7286	7113	8159	5685	5552	5730	4993	6529	7804	8825	9975	6783	6201	6941
Federal Gross Hydro for 1945	6270	7160	6546	5763	6268	6000	5552	5340	10691	12827	9436	6150	6283	6217	7403
Federal Gross Hydro for 1946	6224	7134	7329	9757	8511	11335	10075	12372	14646	12400	11375	7305	6614	6080	9415
Federal Gross Hydro for 1947	6179	6942	11130	12245	11432	11736	8112	9997	13527	11999	11494	9806	7170	6843	10089
Federal Gross Hydro for 1948	9275	7971	9823	13429	8476	8979	8364	12605	15294	14525	13073	8741	6354	6617	10458
Federal Gross Hydro for 1949	6719	6993	7445	8688	7735	11744	8917	12862	14400	12060	8234	10411	9752	7108	9342
Federal Gross Hydro for 1950	6416	6901	6434	10090	12073	13268	11339	11785	13137	14030	13263	6777	5960	5801	9945
Federal Gross Hydro for 1951	7298	8509	11867	14643	14393	10996	11612	12840	14528	12055	12177	9937	8052	6624	11193
Federal Gross Hydro for 1952	8535	7077	9819	11767	9757	9053	11794	13134	15818	12522	10395	10484	8114	6786	10274
Federal Gross Hydro for 1953	6411	7223	7028	8257	10379	7318	6088	8392	12667	15122	13270	8801	6335	6388	9073
Federal Gross Hydro for 1954	6642	7113	8751	9977	11746	9602	9978	10499	13941	14269	13792	9722	7569	6699	10118
Federal Gross Hydro for 1955	6868	7288	8881	8797	5876	5492	7022	6643	10732	14083	14053	11979	10815	9653	9163
Federal Gross Hydro for 1956	7112	7878	11683	15267	10195	12151	12166	14851	15492	14087	12879	10551	9196	6272	11366
Federal Gross Hydro for 1957	6908	6863	8318	10074	6821	8992	11289	11388	15634	14845	10295	10312	7644	6724	9649
Federal Gross Hydro for 1958	6432	7099	6854	8766	9828	9337	8127	11986	14893	13835	10137	7649	6438	6353	9219
Federal Gross Hydro for 1959	6384	7344	10283	14591	11857	9542	10228	9885	12367	14649	13221	7589	6945	6534	10341
Federal Gross Hydro for 1960	9889	9229	11118	12344	7461	8983	15075	12684	11310	13035	11046	10242	7113	9783	10563
Federal Gross Hydro for 1961	6391	6968	7769	10404	10736	9958	10449	9331	13191	14329	10745	9049	6216	6307	9527
Federal Gross Hydro for 1962	6507	7249	6840	10239	6982	6073	12109	14332	12156	11724	10963	8015	7123	6138	8805
Federal Gross Hydro for 1963	7123	7555	10443	11873	8550	6617	6986	7645	13010	12790	11051	9335	7337	6327	9249
Federal Gross Hydro for 1964	6204	7157	7393	9383	7487	6320	8029	8785	11522	14474	14427	9840	7276	6830	9014
Federal Gross Hydro for 1965	7634	7059	11698	15729	13336	11502	9828	12671	14095	13406	11177	10344	8973	7389	11161
Federal Gross Hydro for 1966	7008	7150	8399	11871	6792	6440	11304	9714	11215	11260	11772	9994	8430	6431	9005
Federal Gross Hydro for 1967	6386	7095	7508	12885	12833	8172	7484	7172	11460	14357	13625	9000	6586	6040	9623
Federal Gross Hydro for 1968	6646	6884	7727	10869	10547	8986	5270	7093	10850	13703	12498	10638	7416	6840	9230
Federal Gross Hydro for 1969	7773	8060	9897	14674	11713	8561	13126	13097	15683	14065	11383	10493	8533	8076	11043
Federal Gross Hydro for 1970	6580	7152	6890	10413	9215	7280	6437	8010	12566	13213	10613	9195	6388	6490	8785
Federal Gross Hydro for 1971	6428	7218	6806	12999	15029	10545	11080	12561	15537	14485	13567	7087	6142	6072	10593
Federal Gross Hydro for 1972	6877	7007	8495	12891	13583	14516	13377	10432	15357	14240	14114	11624	9559	7137	11393
Federal Gross Hydro for 1973	6932	7171	8551	11391	5905	6042	5568	5494	8633	8933	9179	11863	10528	7557	8085
Federal Gross Hydro for 1974	6173	6481	10137	16812	14488	12929	13140	14141	14895	14092	14034	7102	6179	5543	11322
Federal Gross Hydro for 1975	5916	7111	7311	11104	9135	10334	7453	8955	12732	14255	14625	11258	10188	6995	9870
Federal Gross Hydro for 1976	7516	8390	13039	14680	11833	9609	12600	12261	14857	12135	13871	8317	7619	6917	11104
Federal Gross Hydro for 1977	6726	7181	7117	8470	5508	5151	4991	4623	6833	7365	8173	13096	12581	10782	7579
Federal Gross Hydro for 1978	5923	6825	7154	10472	9028	10085	10086	9342	11816	11148	11944	6808	6814	5881	8900
Ranked Averages															
Top Ten Percent	7019	7387	10776	15068	13199	12419	12024	12987	14873	13576	12876	9912	8392	6593	11287
Middle Eighty Percent	6777	7245	8301	10659	8994	8458	9102	10103	12607	12585	11488	8928	7486	6776	9308
Bottom Ten Percent	6410	7275	7080	6450	5868	6121	6218	5544	6665	9221	9112	8543	6679	6140	6986

**Table A-27 Federal Gross Hydro - 50 Water Years
PNW Loads and Resource Study
2007 - 2008 Fiscal Years
[30] 2007 Initial Rate Case**

7/13/2005

Energy in Megawatts	Oct	Nov	Dec	Jan	Feb	Mar	1-Apr	16-Apr	May	Jun	Jul	1-Aug	16-Aug	Sep	Avg
Federal Gross Hydro for 1929	6047	7225	6836	7456	5620	6577	6071	5673	6712	10875	8475	10032	6208	6260	7173
Federal Gross Hydro for 1930	6563	7359	7355	5576	6901	6437	6291	6090	6412	9556	9117	7264	6636	6144	7047
Federal Gross Hydro for 1931	6587	7329	6948	5642	5582	6159	7073	5419	6301	9129	8693	7880	7029	5954	6835
Federal Gross Hydro for 1932	6208	7142	7010	5739	5330	8045	10323	13698	13443	13623	10455	7434	7150	6322	8552
Federal Gross Hydro for 1933	6543	6737	7900	12161	9637	7288	7738	9378	11292	14323	14003	8128	7618	6803	9427
Federal Gross Hydro for 1934	7182	8774	14410	15881	13543	10866	13562	12844	13004	8453	9261	10268	9370	6721	10926
Federal Gross Hydro for 1935	6274	6668	6867	11321	11678	6007	7817	9939	10871	11287	10358	6985	6196	5904	8559
Federal Gross Hydro for 1936	6398	7179	7120	6090	5739	6455	7567	10971	14061	11455	8767	9749	6725	6241	8084
Federal Gross Hydro for 1937	6515	7238	7214	5478	5605	5938	6235	5924	7981	9609	8160	7777	6914	6152	6943
Federal Gross Hydro for 1938	6624	6922	7419	11513	7829	9418	9616	11393	14230	12770	10421	7138	6772	6063	9222
Federal Gross Hydro for 1939	6562	7176	7195	8826	5573	6956	7182	9779	12210	8894	9244	7278	6129	6646	7872
Federal Gross Hydro for 1940	6751	7117	7488	8107	6954	9424	8682	10080	11227	10045	8506	8287	7096	6087	8232
Federal Gross Hydro for 1941	6631	7089	7488	8217	5808	6510	6575	5911	8926	9279	8340	6440	6280	6048	7245
Federal Gross Hydro for 1942	6396	6728	9481	11539	7771	5232	6861	9773	10981	12843	11526	6452	6779	6773	8684
Federal Gross Hydro for 1943	6475	6918	7271	10934	10594	10775	13861	13598	13791	13258	12308	9602	7567	6209	10071
Federal Gross Hydro for 1944	6415	7301	7130	8179	5698	5566	5812	5006	6722	8018	8242	10042	6831	6204	6943
Federal Gross Hydro for 1945	6284	7176	6562	5777	6283	6015	5632	5393	10874	12857	8897	6193	6325	6220	7393
Federal Gross Hydro for 1946	6240	7150	7346	9780	8533	11361	10101	12402	14680	12427	10983	7353	6658	6083	9403
Federal Gross Hydro for 1947	6194	6958	11158	12274	11459	11762	8180	10114	13561	12026	11102	9871	7218	6846	10086
Federal Gross Hydro for 1948	9295	7990	9845	13458	8496	9000	8433	12634	15332	14565	12684	8801	6397	6621	10452
Federal Gross Hydro for 1949	6735	7008	7463	8710	7754	11774	8984	12894	14436	12086	7633	10478	9817	7112	9317
Federal Gross Hydro for 1950	6431	6917	6450	10113	12100	13299	11370	11814	13166	14068	12879	6823	6000	5804	9936
Federal Gross Hydro for 1951	7316	8530	11896	14675	14426	11024	11642	12870	14562	12081	11788	10004	8108	6628	11186
Federal Gross Hydro for 1952	8554	7094	9843	11795	9781	9076	11825	13167	15857	12552	9938	10552	8169	6790	10261
Federal Gross Hydro for 1953	6426	7239	7045	8279	10406	7336	6164	8599	12695	15159	12886	8860	6378	6392	9072
Federal Gross Hydro for 1954	6657	7129	8771	10002	11772	9623	10007	10578	13973	14301	13406	9785	7619	6703	10111
Federal Gross Hydro for 1955	6885	7306	8900	8815	5890	5506	7097	6854	10923	14121	14084	12057	10884	9659	9211
Federal Gross Hydro for 1956	7129	7896	11711	15300	10219	12182	12195	14888	15531	14126	12490	10621	9257	6276	11362
Federal Gross Hydro for 1957	6924	6879	8340	10097	6838	9014	11322	11414	15671	14884	9825	10380	7696	6727	9634
Federal Gross Hydro for 1958	6448	7115	6871	8788	9851	9359	8194	12015	14929	13867	9643	7700	6480	6356	9202
Federal Gross Hydro for 1959	6399	7362	10307	14624	11883	9563	10252	9995	12394	14684	12832	7639	6991	6538	10335
Federal Gross Hydro for 1960	9913	9252	11144	12370	7479	9005	15109	12711	11345	13064	10652	10309	7161	9789	10555
Federal Gross Hydro for 1961	6407	6984	7787	10427	10760	9981	10472	9559	13218	14364	10297	9109	6258	6311	9519
Federal Gross Hydro for 1962	6522	7265	6855	10262	6999	6089	12139	14364	12182	11749	10546	8068	7169	6141	8790
Federal Gross Hydro for 1963	7141	7573	10467	11898	8573	6636	7061	7870	13042	12821	10642	9396	7385	6330	9248
Federal Gross Hydro for 1964	6219	7173	7409	9405	7504	6335	8101	8991	11549	14512	14044	9903	7324	6834	9012
Federal Gross Hydro for 1965	7652	7075	11729	15766	13370	11531	9854	12704	14131	13440	10790	10411	9030	7394	11156
Federal Gross Hydro for 1966	7025	7167	8421	11897	6808	6457	11331	9928	11345	11396	11379	10061	8488	6434	9019
Federal Gross Hydro for 1967	6401	7111	7526	12912	12861	8189	7558	7400	11485	14394	13239	9060	6629	6043	9624
Federal Gross Hydro for 1968	6662	6901	7748	10895	10572	9008	5351	7336	10982	13733	12108	10706	7466	6844	9240
Federal Gross Hydro for 1969	7791	8079	9920	14708	11741	8586	13159	13129	15721	14094	10983	10560	8589	8081	11035
Federal Gross Hydro for 1970	6595	7168	6907	10440	9241	7297	6513	8244	12594	13247	10180	9253	6430	6493	8782
Federal Gross Hydro for 1971	6444	7235	6825	13031	15065	10573	11108	12591	15576	14523	13186	7135	6182	6075	10587
Federal Gross Hydro for 1972	6893	7024	8516	12921	13616	14551	13410	10491	15395	14279	13728	11697	9620	7141	11390
Federal Gross Hydro for 1973	6948	7188	8573	11420	5919	6057	5652	5553	8838	9155	8608	11939	10594	7562	8095
Federal Gross Hydro for 1974	6188	6497	10162	16851	14522	12960	13172	14177	14932	14131	14068	7149	6220	5547	11351
Federal Gross Hydro for 1975	5930	7127	7329	11129	9157	10360	7528	9162	12762	14290	14403	11331	10253	6999	9885
Federal Gross Hydro for 1976	7534	8411	13071	14714	11861	9635	12633	12290	14894	12163	13485	8371	7668	6921	11097
Federal Gross Hydro for 1977	6742	7197	7135	8491	5520	5163	5074	4634	7063	7601	7549	13183	12662	10790	7586
Federal Gross Hydro for 1978	5937	6840	7173	10496	9048	10112	10109	9488	11844	11174	11556	6852	6857	5884	8893
Ranked Averages															
Top Ten Percent	7035	7404	10803	15103	13231	12450	12055	13026	14910	13612	12573	9977	8447	6597	11289
Middle Eighty Percent	6793	7261	8321	10683	9015	8479	9156	10212	12674	12653	11071	8987	7536	6780	9306
Bottom Ten Percent	6425	7290	7097	6466	5881	6136	6296	5622	6826	9437	8537	8599	6723	6143	6988

Table A-27 Federal Gross Hydro - 50 Water Years
PNW Loads and Resource Study
2008 - 2009 Fiscal Years
[30] 2007 Initial Rate Case

7/13/2005

Energy in Megawatts	Oct	Nov	Dec	Jan	Feb	Mar	1-Apr	16-Apr	May	Jun	Jul	1-Aug	16-Aug	Sep	Avg
Federal Gross Hydro for 1929	6051	7230	6841	7461	5624	6580	6089	5713	6759	10942	8528	10049	6221	6269	7193
Federal Gross Hydro for 1930	6567	7364	7360	5579	6905	6440	6331	6150	6454	9616	9173	7280	6650	6153	7068
Federal Gross Hydro for 1931	6592	7335	6954	5646	5585	6163	7094	5460	6344	9187	8745	7896	7044	5964	6855
Federal Gross Hydro for 1932	6213	7147	7015	5743	5333	8049	10450	13902	13677	13781	10523	7450	7164	6332	8608
Federal Gross Hydro for 1933	6548	6742	7906	12170	9644	7291	7779	9503	11444	14333	14099	8146	7634	6813	9460
Federal Gross Hydro for 1934	7187	8781	14419	15892	13552	10872	13645	13032	13135	8502	9322	10285	9388	6732	10964
Federal Gross Hydro for 1935	6278	6673	6873	11329	11686	6010	7839	10008	10945	11361	10425	7000	6209	5913	8585
Federal Gross Hydro for 1936	6402	7185	7125	6094	5743	6458	7633	11054	14294	11564	8822	9767	6739	6250	8128
Federal Gross Hydro for 1937	6519	7244	7219	5482	5609	5942	6254	5968	8033	9672	8212	7793	6928	6161	6964
Federal Gross Hydro for 1938	6628	6927	7423	11521	7834	9423	9717	11599	14469	12935	10488	7154	6786	6072	9279
Federal Gross Hydro for 1939	6566	7181	7200	8832	5577	6959	7235	9868	12290	8950	9302	7293	6142	6656	7898
Federal Gross Hydro for 1940	6756	7122	7494	8112	6958	9429	8760	10173	11300	10110	8560	8304	7110	6096	8259
Federal Gross Hydro for 1941	6636	7093	7493	8223	5811	6514	6595	5955	8987	9343	8394	6456	6294	6057	7267
Federal Gross Hydro for 1942	6400	6733	9487	11547	7775	5235	6882	9843	11053	12928	11599	6467	6792	6783	8711
Federal Gross Hydro for 1943	6479	6922	7275	10940	10599	10780	13868	13703	14011	13429	12389	9620	7583	6219	10119
Federal Gross Hydro for 1944	6419	7306	7135	8185	5702	5569	5829	5043	6769	8074	8293	10059	6846	6214	6963
Federal Gross Hydro for 1945	6289	7181	6567	5780	6286	6019	5649	5436	10944	12943	8954	6208	6337	6230	7417
Federal Gross Hydro for 1946	6244	7155	7350	9785	8538	11366	10211	12628	14925	12554	11053	7369	6673	6092	9459
Federal Gross Hydro for 1947	6198	6963	11164	12281	11465	11768	8238	10260	13744	12165	11172	9888	7233	6856	10132
Federal Gross Hydro for 1948	9302	7996	9852	13466	8499	9005	8498	12842	15447	14576	12767	8818	6412	6630	10485
Federal Gross Hydro for 1949	6740	7013	7468	8716	7758	11779	9085	13114	14551	12221	7683	10496	9835	7124	9360
Federal Gross Hydro for 1950	6436	6921	6455	10119	12106	13305	11500	12005	13373	14078	12967	6838	6012	5812	9979
Federal Gross Hydro for 1951	7321	8535	11904	14685	14434	11029	11770	13089	14804	12227	11864	10020	8124	6638	11245
Federal Gross Hydro for 1952	8560	7099	9849	11802	9785	9081	11862	13270	15867	12716	10001	10569	8186	6801	10292
Federal Gross Hydro for 1953	6430	7244	7050	8283	10412	7339	6200	8716	12882	15169	12969	8877	6392	6401	9106
Federal Gross Hydro for 1954	6662	7134	8777	10009	11779	9628	10104	10746	14199	14311	13498	9802	7634	6712	10154
Federal Gross Hydro for 1955	6889	7311	8907	8821	5893	5509	7157	6909	10992	14132	14095	12077	10902	9675	9229
Federal Gross Hydro for 1956	7134	7902	11718	15310	10225	12187	12333	14897	15541	14137	12572	10638	9275	6286	11382
Federal Gross Hydro for 1957	6928	6883	8345	10105	6841	9017	11456	11595	15680	14894	9887	10397	7712	6737	9658
Federal Gross Hydro for 1958	6452	7120	6875	8795	9857	9364	8269	12225	15043	14033	9703	7716	6494	6365	9247
Federal Gross Hydro for 1959	6403	7367	10313	14633	11890	9568	10333	10105	12568	14700	12920	7655	7005	6547	10372
Federal Gross Hydro for 1960	9919	9258	11151	12378	7484	9010	15118	12859	11497	13216	10722	10327	7177	9804	10598
Federal Gross Hydro for 1961	6411	6989	7793	10434	10766	9986	10545	9643	13389	14375	10362	9127	6271	6321	9552
Federal Gross Hydro for 1962	6527	7270	6860	10270	7002	6092	12279	14590	12363	11897	10614	8084	7185	6150	8843
Federal Gross Hydro for 1963	7145	7579	10474	11905	8576	6641	7099	7932	13127	12907	10710	9413	7401	6339	9277
Federal Gross Hydro for 1964	6223	7177	7414	9413	7509	6339	8205	9114	11738	14522	14139	9922	7339	6845	9051
Federal Gross Hydro for 1965	7657	7080	11736	15776	13377	11537	9950	12878	14326	13547	10861	10429	9047	7405	11204
Federal Gross Hydro for 1966	7030	7172	8427	11904	6812	6460	11435	10004	11420	11469	11452	10079	8504	6444	9050
Federal Gross Hydro for 1967	6405	7116	7531	12921	12869	8193	7598	7465	11680	14404	13328	9078	6645	6052	9658
Federal Gross Hydro for 1968	6667	6906	7754	10903	10577	9013	5366	7380	11051	13824	12185	10723	7482	6855	9268
Federal Gross Hydro for 1969	7796	8085	9926	14717	11748	8590	13275	13365	15765	14247	11053	10578	8606	8094	11078
Federal Gross Hydro for 1970	6600	7173	6913	10446	9246	7301	6543	8301	12813	13356	10245	9271	6444	6503	8823
Federal Gross Hydro for 1971	6448	7240	6829	13038	15074	10578	11251	12801	15585	14532	13273	7150	6196	6083	10615
Federal Gross Hydro for 1972	6897	7028	8522	12929	13624	14558	13505	10645	15433	14290	13824	11715	9638	7152	11417
Federal Gross Hydro for 1973	6952	7192	8579	11427	5922	6060	5668	5593	8896	9216	8662	11958	10612	7573	8116
Federal Gross Hydro for 1974	6192	6501	10168	16862	14531	12966	13292	14332	15053	14141	14079	7165	6232	5555	11380
Federal Gross Hydro for 1975	5934	7132	7334	11136	9162	10365	7581	9286	12983	14384	14501	11349	10271	7011	9932
Federal Gross Hydro for 1976	7539	8417	13079	14722	11868	9639	12755	12508	14999	12336	13575	8387	7682	6931	11147
Federal Gross Hydro for 1977	6747	7202	7139	8497	5524	5167	5090	4666	7112	7650	7594	13203	12682	10806	7605
Federal Gross Hydro for 1978	5941	6845	7177	10503	9052	10117	10221	9626	12037	11325	11630	6869	6870	5893	8943
Ranked Averages															
Top Ten Percent	7040	7409	10809	15112	13238	12455	12170	13168	15031	13669	12640	9994	8463	6607	11326
Middle Eighty Percent	6798	7266	8327	10690	9020	8483	9225	10341	12807	12735	11141	9004	7551	6790	9343
Bottom Ten Percent	6430	7296	7102	6471	5885	6139	6319	5667	6872	9498	8590	8615	6738	6152	7009

**Table A-27 Federal Gross Hydro - 50 Water Years
PNW Loads and Resource Study
2006 - 2007 Fiscal Years
[10] 2003 Safety Net CRAC Final Proposal**

7/13/2005

Energy in Megawatts	Oct	Nov	Dec	Jan	Feb	Mar	1-Apr	16-Apr	May	Jun	Jul	1-Aug	16-Aug	Sep	Avg
Federal Gross Hydro for 1929	6528	7284	7489	8368	5370	6235	5745	5424	6274	8925	8859	10403	7660	5678	7136
Federal Gross Hydro for 1930	6766	7490	7458	5609	6657	6301	6238	5982	6202	8786	9154	8584	7364	5528	7003
Federal Gross Hydro for 1931	6694	7446	7516	5673	5400	6006	6940	5134	6879	8129	7956	9207	7714	5693	6824
Federal Gross Hydro for 1932	6573	7295	7405	5714	5197	7873	10787	13197	13450	12543	10377	9030	7092	5726	8517
Federal Gross Hydro for 1933	6775	6968	8639	11665	10323	6244	7395	8643	11252	15579	13514	10769	9516	5984	9592
Federal Gross Hydro for 1934	8253	9271	14378	15852	13395	10589	14360	13542	12701	7911	9879	10150	10527	6780	11108
Federal Gross Hydro for 1935	6439	6918	8038	10944	11194	5570	7137	9571	10300	11038	10352	8242	6429	5473	8496
Federal Gross Hydro for 1936	6695	7324	7468	6599	5419	6539	6088	9187	14971	10554	8982	10148	7735	5703	8069
Federal Gross Hydro for 1937	6757	7389	7442	5954	5648	6231	6038	5788	6833	8108	8298	9796	7407	5574	6896
Federal Gross Hydro for 1938	6973	7216	7566	12016	7634	9245	9936	10221	13704	11546	9800	9270	6903	5562	9119
Federal Gross Hydro for 1939	6856	7323	7436	8876	5793	6995	7197	8342	11944	8797	9129	8942	7178	6105	7924
Federal Gross Hydro for 1940	7006	7247	7718	8028	6855	9544	8426	9321	10178	9785	8305	10043	7568	5583	8161
Federal Gross Hydro for 1941	6723	7090	8244	8771	5457	6362	5551	5636	7642	9218	7456	8813	7001	5517	7165
Federal Gross Hydro for 1942	6652	6934	10349	12198	6285	5581	6505	7611	9823	13137	11076	8509	7188	6015	8580
Federal Gross Hydro for 1943	6724	7101	8009	11186	9918	10122	13903	13082	13619	12873	11232	10739	9447	5969	10028
Federal Gross Hydro for 1944	6864	7367	7409	8864	5471	5677	5817	5198	6239	7790	7240	10453	9341	5963	7024
Federal Gross Hydro for 1945	6479	7322	7412	5772	6025	6058	5909	5567	10171	11881	9041	8629	6511	5670	7428
Federal Gross Hydro for 1946	6885	7335	7506	9450	9120	10237	10546	11874	14086	12059	10993	8860	8203	5418	9403
Federal Gross Hydro for 1947	6707	7300	11452	12506	11136	10595	8404	10381	12955	11637	10506	10860	9046	6267	10034
Federal Gross Hydro for 1948	9599	8608	9977	12347	7897	8724	8716	11631	15606	16523	11563	10868	8264	6042	10552
Federal Gross Hydro for 1949	7094	7192	8324	9613	7685	11682	8799	12830	14135	11414	8163	10322	10922	7221	9497
Federal Gross Hydro for 1950	6742	7086	7131	9955	11686	12677	11972	11761	12632	15313	11724	8584	6558	5160	9962
Federal Gross Hydro for 1951	8060	9274	12740	14341	14040	10911	11781	12468	14145	10574	11611	9809	10186	6477	11191
Federal Gross Hydro for 1952	8882	7529	10529	12046	9698	9266	12083	12713	15478	11817	9491	10454	10325	6877	10367
Federal Gross Hydro for 1953	6692	7441	7451	8600	11179	6880	5917	8190	12208	15008	11830	10476	8068	5877	9124
Federal Gross Hydro for 1954	7064	7420	9253	10761	11499	8713	11013	10150	13259	14316	12780	10644	9123	6312	10154
Federal Gross Hydro for 1955	7848	8101	9427	8115	5899	5760	7165	6647	9482	16067	14194	11967	10600	9790	9406
Federal Gross Hydro for 1956	7680	8475	12305	15059	10385	11863	12034	14679	15540	16058	12054	10341	10827	6168	11627
Federal Gross Hydro for 1957	7230	7151	9478	10364	6750	8222	12809	10544	14935	15674	9748	10818	9800	6235	9814
Federal Gross Hydro for 1958	6878	7322	7627	9724	9765	9001	7478	11354	14084	13627	9174	9335	7482	5760	9232
Federal Gross Hydro for 1959	6733	7971	10483	14363	11948	9031	10352	9396	11786	14263	12536	9373	7856	5890	10291
Federal Gross Hydro for 1960	10441	9919	11646	12032	7959	8789	14491	11812	11184	12072	10542	10474	9563	9497	10604
Federal Gross Hydro for 1961	6934	7601	8280	10433	10678	9916	10406	10505	12133	15489	9941	10867	7682	5985	9760
Federal Gross Hydro for 1962	6823	7299	7289	10275	6692	6290	12271	12738	11390	10925	10839	9618	8349	5506	8735
Federal Gross Hydro for 1963	7492	8160	10450	10701	8760	7801	7281	7747	12489	11761	10466	10228	8907	5820	9248
Federal Gross Hydro for 1964	6589	7375	7781	10098	7704	6230	8725	8912	10857	15630	13553	11171	9191	6411	9269
Federal Gross Hydro for 1965	8014	7543	12603	15750	13523	11258	10060	12602	13844	12820	9885	10518	10112	7212	11175
Federal Gross Hydro for 1966	7401	7608	9378	11575	7347	6629	10986	8704	11282	10205	10958	10602	9804	6350	9065
Federal Gross Hydro for 1967	6685	7295	8237	12121	12732	7889	9565	8041	9627	15032	12644	10924	8681	5637	9709
Federal Gross Hydro for 1968	7155	7461	9160	11446	10178	8964	5522	7880	9809	12572	12190	10603	9675	6489	9355
Federal Gross Hydro for 1969	8176	8661	10291	14172	12119	9606	13354	12784	15269	12393	10782	10820	9860	7748	11052
Federal Gross Hydro for 1970	6851	7461	8000	10938	10088	6911	6139	8944	11197	13059	8320	10732	8147	5876	8807
Federal Gross Hydro for 1971	6851	7593	7832	13134	14819	10603	11036	12089	15745	15332	12492	9142	7684	5511	10824
Federal Gross Hydro for 1972	6960	7480	9352	12870	14299	14028	14017	10055	15347	15918	13051	10761	11032	6708	11579
Federal Gross Hydro for 1973	7182	7303	9664	12052	5842	6145	5337	5509	7449	9151	8767	11497	10626	7313	8113
Federal Gross Hydro for 1974	6354	6907	10738	16402	14760	12355	13088	14003	14574	16088	14702	9000	6758	5385	11641
Federal Gross Hydro for 1975	6539	7331	8142	11279	9508	10626	8828	9276	12373	13659	13412	10845	10994	7242	10007
Federal Gross Hydro for 1976	7725	9023	13762	14211	11957	9830	13011	11495	14690	11103	12802	9277	8289	6406	11045
Federal Gross Hydro for 1977	7386	7339	7650	8898	5349	5242	5156	4814	7244	7323	7211	12718	12233	10627	7644
Federal Gross Hydro for 1978	6124	7053	7893	10387	8045	10440	8834	9927	11732	10655	10983	9047	6516	5350	8819
Ranked Averages															
Top Ten Percent	7414	7936	11548	14884	13401	12083	12196	12761	14690	14292	12260	10086	9783	6390	11443
Middle Eighty Percent	7171	7574	8919	10730	8938	8336	9235	9814	12122	12473	10694	10110	8639	6368	9352
Bottom Ten Percent	6722	7395	7463	6894	5709	6090	6156	5505	6485	8348	8301	9689	7897	5687	6976

**Table A-27 Federal Gross Hydro - 50 Water Years
PNW Loads and Resource Study
2007 - 2008 Fiscal Years
[10] 2003 Safety Net CRAC Final Proposal**

7/13/2005

Energy in Megawatts	Oct	Nov	Dec	Jan	Feb	Mar	1-Apr	16-Apr	May	Jun	Jul	1-Aug	16-Aug	Sep	Avg
Federal Gross Hydro for 1929	6566	7324	7529	8410	5397	6258	5770	5449	6298	8958	8904	10430	7679	5692	7167
Federal Gross Hydro for 1930	6799	7538	7503	5640	6688	6328	6264	6001	6226	8832	9206	8606	7384	5542	7036
Federal Gross Hydro for 1931	6725	7492	7565	5705	5429	6032	6968	5156	6910	8185	8010	9232	7735	5706	6859
Federal Gross Hydro for 1932	6607	7339	7444	5743	5226	7896	10834	13267	13507	12606	10438	9055	7111	5740	8557
Federal Gross Hydro for 1933	6814	7010	8682	11732	10389	6278	7447	8683	11306	15644	13599	10795	9540	6000	9640
Federal Gross Hydro for 1934	8304	9313	14444	15936	13474	10643	14424	13607	12778	7954	9932	10177	10553	6800	11163
Federal Gross Hydro for 1935	6473	6958	8078	11008	11265	5610	7170	9612	10338	11082	10417	8266	6449	5489	8539
Federal Gross Hydro for 1936	6733	7371	7517	6639	5449	6564	6118	9213	15030	10615	9037	10175	7757	5718	8109
Federal Gross Hydro for 1937	6793	7437	7489	5988	5680	6259	6067	5812	6849	8140	8346	9821	7427	5588	6928
Federal Gross Hydro for 1938	7009	7264	7608	12078	7682	9281	9980	10261	13769	11590	9861	9295	6924	5577	9162
Federal Gross Hydro for 1939	6894	7364	7475	8933	5829	7021	7227	8368	11988	8841	9180	8966	7198	6121	7960
Federal Gross Hydro for 1940	7046	7295	7761	8068	6884	9583	8452	9374	10211	9829	8354	10069	7589	5598	8197
Federal Gross Hydro for 1941	6761	7135	8290	8804	5485	6386	5589	5681	7678	9256	7498	8837	7021	5531	7199
Federal Gross Hydro for 1942	6685	6975	10385	12276	6317	5604	6530	7638	9857	13191	11145	8532	7208	6029	8618
Federal Gross Hydro for 1943	6763	7141	8044	11241	9951	10155	13952	13127	13686	12918	11289	10766	9471	5984	10069
Federal Gross Hydro for 1944	6902	7406	7445	8905	5496	5699	5839	5229	6272	7824	7279	10479	9365	5977	7055
Federal Gross Hydro for 1945	6512	7364	7453	5799	6049	6081	5933	5585	10202	11924	9100	8652	6530	5684	7460
Federal Gross Hydro for 1946	6918	7377	7544	9487	9160	10278	10592	11921	14156	12124	11057	8883	8225	5432	9445
Federal Gross Hydro for 1947	6742	7339	11478	12583	11182	10641	8453	10429	13009	11703	10569	10887	9069	6284	10079
Federal Gross Hydro for 1948	9656	8646	10026	12408	7928	8767	8759	11679	15672	16594	11648	10893	8285	6058	10601
Federal Gross Hydro for 1949	7135	7232	8360	9667	7713	11724	8836	12885	14186	11466	8210	10348	10948	7238	9537
Federal Gross Hydro for 1950	6776	7127	7173	10013	11733	12730	12013	11814	12694	15380	11794	8607	6576	5173	10008
Federal Gross Hydro for 1951	8105	9307	12790	14420	14109	10954	11826	12526	14215	10620	11684	9834	10211	6493	11241
Federal Gross Hydro for 1952	8933	7573	10568	12109	9746	9298	12121	12755	15543	11866	9553	10480	10350	6894	10411
Federal Gross Hydro for 1953	6727	7485	7495	8625	11234	6918	5960	8225	12262	15063	11898	10502	8088	5891	9165
Federal Gross Hydro for 1954	7106	7465	9293	10820	11559	8754	11061	10185	13328	14394	12859	10671	9147	6328	10203
Federal Gross Hydro for 1955	7896	8145	9477	8157	5928	5787	7199	6693	9518	16144	14283	11996	10626	9813	9450
Federal Gross Hydro for 1956	7725	8511	12350	15138	10438	11900	12091	14738	15606	16131	12129	10368	10853	6183	11678
Federal Gross Hydro for 1957	7270	7191	9515	10420	6777	8255	12850	10593	15001	15746	9801	10845	9825	6250	9857
Federal Gross Hydro for 1958	6915	7365	7662	9778	9803	9050	7514	11394	14134	13700	9222	9359	7501	5774	9274
Federal Gross Hydro for 1959	6773	8009	10523	14437	12020	9064	10407	9447	11852	14335	12606	9397	7877	5904	10341
Federal Gross Hydro for 1960	10496	9959	11701	12112	8005	8822	14563	11878	11240	12127	10605	10501	9588	9519	10654
Federal Gross Hydro for 1961	6976	7644	8319	10495	10734	9964	10461	10552	12206	15572	9998	10894	7702	6002	9809
Federal Gross Hydro for 1962	6863	7339	7327	10332	6732	6314	12310	12806	11446	10975	10905	9643	8371	5520	8777
Federal Gross Hydro for 1963	7532	8200	10493	10767	8802	7826	7319	7792	12525	11809	10530	10254	8930	5834	9289
Federal Gross Hydro for 1964	6628	7415	7819	10156	7750	6256	8749	8951	10902	15694	13639	11197	9214	6427	9312
Federal Gross Hydro for 1965	8062	7589	12630	15825	13584	11297	10100	12651	13903	12862	9938	10545	10136	7230	11220
Federal Gross Hydro for 1966	7443	7652	9413	11636	7400	6654	11041	8749	11332	10256	11025	10629	9828	6366	9108
Federal Gross Hydro for 1967	6724	7337	8277	12187	12803	7932	9624	8085	9671	15101	12718	10951	8701	5651	9757
Federal Gross Hydro for 1968	7196	7504	9196	11505	10231	9007	5549	7925	9840	12636	12255	10631	9700	6506	9398
Federal Gross Hydro for 1969	8222	8700	10337	14242	12187	9637	13411	12844	15337	12465	10845	10847	9885	7768	11103
Federal Gross Hydro for 1970	6892	7504	8036	10977	10135	6946	6179	9003	11237	13098	8369	10757	8168	5891	8845
Federal Gross Hydro for 1971	6885	7630	7865	13188	14884	10637	11074	12143	15809	15392	12561	9166	7702	5524	10868
Federal Gross Hydro for 1972	6999	7520	9387	12926	14364	14082	14085	10111	15412	15984	13136	10788	11058	6724	11630
Federal Gross Hydro for 1973	7223	7342	9700	12108	5871	6170	5372	5551	7475	9199	8816	11525	10653	7330	8149
Federal Gross Hydro for 1974	6384	6942	10768	16479	14832	12403	13140	14063	14634	16155	14787	9024	6776	5398	11690
Federal Gross Hydro for 1975	6575	7370	8176	11336	9560	10660	8875	9317	12425	13704	13486	10873	11020	7260	10050
Federal Gross Hydro for 1976	7765	9058	13811	14285	12021	9869	13063	11547	14751	11143	12879	9302	8312	6423	11093
Federal Gross Hydro for 1977	7430	7379	7688	8943	5376	5266	5182	4850	7284	7365	7253	12747	12260	10652	7680
Federal Gross Hydro for 1978	6155	7091	7917	10429	8073	10484	8890	9979	11789	10693	11046	9071	6535	5364	8857
Ranked Averages															
Top Ten Percent	7455	7974	11585	14957	13466	12127	12249	12818	14754	14350	12335	10112	9807	6406	11492
Middle Eighty Percent	7211	7615	8959	10786	8984	8370	9277	9860	12174	12530	10757	10136	8661	6384	9395
Bottom Ten Percent	6757	7439	7506	6930	5738	6116	6182	5530	6511	8388	8349	9713	7918	5701	7009

**Table A-27 Federal Gross Hydro - 50 Water Years
PNW Loads and Resource Study
2008 - 2009 Fiscal Years
[10] 2003 Safety Net CRAC Final Proposal**

7/13/2005

Energy in Megawatts	Oct	Nov	Dec	Jan	Feb	Mar	1-Apr	16-Apr	May	Jun	Jul	1-Aug	16-Aug	Sep	Avg
Federal Gross Hydro for 1929	6585	7341	7549	8431	5411	6274	5785	5462	6314	8978	8926	10457	7698	5706	7185
Federal Gross Hydro for 1930	6815	7557	7523	5655	6705	6344	6281	6013	6241	8852	9230	8628	7403	5556	7053
Federal Gross Hydro for 1931	6741	7511	7586	5720	5443	6048	6987	5167	6927	8206	8034	9256	7756	5720	6877
Federal Gross Hydro for 1932	6624	7358	7461	5757	5240	7915	10857	13296	13536	12634	10464	9080	7130	5754	8577
Federal Gross Hydro for 1933	6833	7030	8702	11762	10419	6297	7470	8703	11332	15673	13628	10821	9564	6015	9664
Federal Gross Hydro for 1934	8327	9333	14476	15968	13506	10670	14451	13635	12807	7970	9956	10203	10580	6819	11189
Federal Gross Hydro for 1935	6489	6977	8096	11037	11295	5631	7191	9635	10360	11106	10443	8290	6469	5506	8561
Federal Gross Hydro for 1936	6751	7391	7537	6659	5463	6581	6136	9235	15058	10641	9061	10202	7779	5734	8129
Federal Gross Hydro for 1937	6810	7456	7509	6005	5695	6276	6085	5825	6861	8157	8370	9845	7447	5602	6945
Federal Gross Hydro for 1938	7026	7284	7629	12106	7706	9303	10002	10285	13798	11615	9887	9319	6946	5591	9185
Federal Gross Hydro for 1939	6913	7382	7494	8959	5846	7039	7248	8388	12014	8859	9203	8991	7217	6137	7981
Federal Gross Hydro for 1940	7065	7315	7781	8088	6901	9607	8471	9400	10233	9848	8377	10095	7609	5612	8218
Federal Gross Hydro for 1941	6780	7155	8311	8822	5500	6402	5610	5702	7698	9277	7520	8861	7042	5546	7218
Federal Gross Hydro for 1942	6702	6994	10405	12309	6335	5619	6549	7658	9879	13218	11173	8556	7229	6043	8639
Federal Gross Hydro for 1943	6781	7159	8062	11269	9973	10179	13977	13152	13715	12945	11314	10793	9494	5999	10092
Federal Gross Hydro for 1944	6920	7424	7464	8926	5509	5713	5854	5244	6289	7842	7299	10504	9389	5991	7073
Federal Gross Hydro for 1945	6528	7382	7472	5813	6063	6095	5949	5596	10225	11949	9126	8675	6549	5698	7478
Federal Gross Hydro for 1946	6934	7396	7565	9508	9182	10302	10615	11947	14186	12152	11083	8905	8247	5446	9468
Federal Gross Hydro for 1947	6761	7357	11497	12616	11209	10666	8475	10453	13037	11732	10595	10913	9092	6300	10103
Federal Gross Hydro for 1948	9680	8666	10050	12439	7948	8792	8781	11704	15701	16623	11677	10919	8306	6073	10625
Federal Gross Hydro for 1949	7155	7251	8379	9693	7730	11750	8858	12912	14213	11491	8233	10375	10975	7255	9559
Federal Gross Hydro for 1950	6793	7146	7194	10041	11758	12757	12037	11840	12723	15410	11822	8630	6594	5187	10032
Federal Gross Hydro for 1951	8127	9325	12818	14453	14141	10979	11849	12554	14244	10645	11711	9859	10237	6508	11267
Federal Gross Hydro for 1952	8956	7592	10590	12139	9773	9319	12144	12780	15572	11892	9578	10506	10375	6912	10436
Federal Gross Hydro for 1953	6745	7504	7515	8642	11263	6940	5981	8246	12288	15091	11925	10528	8108	5905	9188
Federal Gross Hydro for 1954	7126	7484	9312	10849	11589	8778	11083	10208	13357	14423	12888	10698	9171	6344	10227
Federal Gross Hydro for 1955	7918	8165	9499	8178	5943	5802	7220	6717	9539	16174	14312	12024	10652	9837	9473
Federal Gross Hydro for 1956	7747	8529	12376	15170	10467	11925	12117	14767	15635	16160	12157	10394	10879	6199	11704
Federal Gross Hydro for 1957	7291	7209	9535	10447	6794	8278	12872	10618	15031	15775	9825	10871	9849	6266	9880
Federal Gross Hydro for 1958	6933	7383	7679	9805	9825	9076	7534	11418	14161	13730	9245	9383	7520	5789	9296
Federal Gross Hydro for 1959	6792	8028	10545	14469	12052	9086	10430	9472	11881	14364	12633	9421	7898	5919	10365
Federal Gross Hydro for 1960	10521	9979	11726	12145	8027	8843	14590	11905	11267	12154	10631	10528	9612	9542	10679
Federal Gross Hydro for 1961	6996	7664	8337	10522	10762	9989	10485	10574	12236	15601	10023	10921	7721	6018	9833
Federal Gross Hydro for 1962	6882	7357	7345	10359	6753	6329	12332	12834	11473	11000	10932	9668	8392	5534	8798
Federal Gross Hydro for 1963	7553	8219	10516	10797	8829	7841	7340	7814	12550	11836	10557	10281	8953	5849	9312
Federal Gross Hydro for 1964	6646	7433	7837	10183	7772	6271	8768	8972	10928	15723	13668	11224	9237	6443	9334
Federal Gross Hydro for 1965	8085	7609	12650	15857	13615	11322	10122	12677	13932	12888	9963	10572	10161	7248	11245
Federal Gross Hydro for 1966	7463	7672	9432	11665	7424	6670	11066	8772	11359	10281	11052	10656	9852	6383	9131
Federal Gross Hydro for 1967	6742	7355	8296	12217	12834	7955	9648	8106	9697	15131	12746	10979	8721	5665	9781
Federal Gross Hydro for 1968	7216	7524	9216	11534	10259	9032	5567	7946	9860	12665	12282	10658	9725	6522	9421
Federal Gross Hydro for 1969	8245	8719	10359	14274	12218	9660	13436	12872	15366	12494	10871	10875	9910	7789	11128
Federal Gross Hydro for 1970	6912	7522	8054	11000	10162	6966	6199	9028	11262	13124	8393	10783	8188	5905	8867
Federal Gross Hydro for 1971	6902	7647	7884	13218	14916	10661	11096	12170	15838	15421	12589	9191	7721	5537	10892
Federal Gross Hydro for 1972	7017	7538	9406	12955	14395	14110	14113	10137	15441	16013	13166	10816	11084	6741	11655
Federal Gross Hydro for 1973	7242	7360	9720	12138	5887	6185	5390	5570	7492	9220	8839	11553	10679	7347	8169
Federal Gross Hydro for 1974	6399	6960	10787	16511	14863	12429	13166	14091	14663	16184	14816	9049	6794	5411	11715
Federal Gross Hydro for 1975	6593	7387	8194	11364	9587	10684	8897	9340	12453	13731	13515	10900	11046	7277	10073
Federal Gross Hydro for 1976	7787	9077	13840	14317	12052	9893	13088	11572	14781	11168	12908	9328	8335	6439	11119
Federal Gross Hydro for 1977	7450	7396	7707	8964	5390	5280	5197	4866	7302	7382	7272	12776	12287	10676	7698
Federal Gross Hydro for 1978	6171	7109	7933	10452	8092	10510	8914	10004	11817	10717	11072	9095	6554	5378	8878
Ranked Averages															
Top Ten Percent	7475	7992	11607	14989	13496	12153	12273	12845	14783	14378	12363	10138	9831	6422	11517
Middle Eighty Percent	7231	7634	8980	10813	9007	8391	9299	9884	12201	12556	10783	10162	8683	6400	9417
Bottom Ten Percent	6774	7458	7526	6947	5753	6131	6198	5542	6526	8407	8372	9738	7939	5715	7027

**Table A-27 Federal Gross Hydro - 50 Water Years
PNW Loads and Resource Study
2006 - 2007 Fiscal Years
[86] Rate Case 2000**

7/13/2005

Energy in Megawatts	Oct	Nov	Dec	Jan	Feb	Mar	1-Apr	16-Apr	May	Jun	Jul	1-Aug	16-Aug	Sep	Avg
Federal Gross Hydro for 1929	7157	5861	7387	6075	7091	5906	5879	7250	6904	8931	7557	9733	6982	6106	6991
Federal Gross Hydro for 1930	6490	6563	7584	6115	6616	5684	6899	10401	6326	6468	7831	6803	6437	6135	6757
Federal Gross Hydro for 1931	6368	6646	7792	5427	5348	5666	8193	6572	9121	7040	8019	7520	6989	5677	6812
Federal Gross Hydro for 1932	6460	6552	7027	5473	6790	8899	12475	11785	11785	11315	9165	7045	6100	5560	8144
Federal Gross Hydro for 1933	7261	6391	7625	12750	9822	6739	10419	7633	9930	14276	12731	7819	7468	6454	9221
Federal Gross Hydro for 1934	8544	8607	12647	16085	13378	11086	14270	13378	12585	8219	6771	9770	10094	7132	10734
Federal Gross Hydro for 1935	6149	6020	7193	12129	8897	8001	11231	8574	9076	10252	9362	5933	5430	5755	8202
Federal Gross Hydro for 1936	6815	6181	7497	6656	7315	6414	6682	12329	12518	8982	8794	8091	5632	5870	7784
Federal Gross Hydro for 1937	6526	6288	7429	6081	6524	5419	5709	5512	8438	7062	7517	7258	6507	6174	6662
Federal Gross Hydro for 1938	6640	6731	8026	11312	8053	10407	10459	10135	12772	11147	8317	7377	6653	6383	8925
Federal Gross Hydro for 1939	7273	5954	7259	6141	9713	8313	9636	9859	9722	6345	9422	6939	5778	6018	7689
Federal Gross Hydro for 1940	7206	6365	7376	7169	8434	10128	9641	9804	8345	5648	7777	7951	6321	6142	7621
Federal Gross Hydro for 1941	7393	6244	7405	6959	6666	7026	6228	7846	7932	8561	6773	7288	6085	6522	7100
Federal Gross Hydro for 1942	7269	6747	10313	11230	9033	5878	8172	8466	9611	9786	10159	6871	6236	6013	8409
Federal Gross Hydro for 1943	7083	6032	7350	11469	11490	10450	14318	13141	12422	11658	10463	10098	7911	6717	9822
Federal Gross Hydro for 1944	7301	5932	7397	6166	7390	5333	5928	6835	7483	7635	6713	9614	8200	6116	6896
Federal Gross Hydro for 1945	6595	6621	7008	5540	5958	5717	6389	7428	10296	9429	8983	7052	6042	5590	7099
Federal Gross Hydro for 1946	6454	6142	8471	12472	8487	9444	10564	11724	13387	11480	9565	7628	7105	6295	9225
Federal Gross Hydro for 1947	7369	6287	10310	13824	12676	9131	10066	10045	12029	10960	9130	8994	6174	6726	9673
Federal Gross Hydro for 1948	10096	7885	8602	13952	11083	8004	8956	10984	15228	17045	11550	8799	6692	6497	10638
Federal Gross Hydro for 1949	7749	6082	7260	9984	8153	12493	11148	12424	12315	10796	6444	9871	10254	7325	9204
Federal Gross Hydro for 1950	6676	5808	8268	12380	11019	11578	12957	11695	11819	15274	11384	5704	5170	6021	9832
Federal Gross Hydro for 1951	8631	8527	11251	14959	13890	11102	13071	12637	13574	10030	10606	9078	8565	6711	10913
Federal Gross Hydro for 1952	9405	6780	9259	13416	10305	8676	13210	12541	14486	11413	8626	9864	8780	6673	10103
Federal Gross Hydro for 1953	6799	6024	7549	7280	13657	9874	7900	8241	10332	12276	10642	8857	6335	6061	8847
Federal Gross Hydro for 1954	7719	6445	7725	10617	14413	8884	10369	9799	12539	14021	11636	9987	8605	6765	10012
Federal Gross Hydro for 1955	8489	7253	7891	9642	8917	5623	8650	8604	8563	13193	13031	10765	9740	9605	9257
Federal Gross Hydro for 1956	8265	7699	11110	15216	12675	11246	12285	14215	15517	15067	10837	9737	9396	6895	11445
Federal Gross Hydro for 1957	7881	5969	8219	9379	12195	8980	13149	9382	15151	12732	8366	10194	8748	6572	9682
Federal Gross Hydro for 1958	7070	5924	7359	9521	13535	7914	8731	10979	13761	11778	7979	7814	6492	6192	9003
Federal Gross Hydro for 1959	7578	7018	9261	14864	12806	9865	10778	8574	11590	13223	10791	7731	6690	6182	10005
Federal Gross Hydro for 1960	10952	9026	9663	13298	9276	9322	14889	11293	9687	10335	9556	9921	8413	9449	10235
Federal Gross Hydro for 1961	7614	6595	6874	11776	13470	9719	10299	7467	12469	13977	8818	9369	6370	6436	9542
Federal Gross Hydro for 1962	7337	5830	7106	11774	7665	7036	11935	11791	10050	8977	9941	8542	6784	5985	8436
Federal Gross Hydro for 1963	8195	7231	9178	12402	10103	7269	9206	9011	9358	10437	9691	9740	7873	6152	8994
Federal Gross Hydro for 1964	7230	5965	6989	9186	12204	6429	10084	7925	9852	14158	12065	9412	7679	7192	9068
Federal Gross Hydro for 1965	8563	6653	11547	15982	13551	11189	9931	12914	13005	12459	9513	9966	9230	7637	10927
Federal Gross Hydro for 1966	8043	6730	8078	11254	10822	7243	12137	8966	9022	8118	10069	9999	8882	6754	8844
Federal Gross Hydro for 1967	7142	5944	7532	13212	12613	9051	9663	6269	9845	13470	11843	9687	6575	6217	9414
Federal Gross Hydro for 1968	7809	6483	7977	12206	12506	9648	6951	7343	7374	10614	9781	10042	8867	6965	8997
Federal Gross Hydro for 1969	8718	7842	8898	15002	12871	10299	12289	13062	14949	12345	9629	10347	8913	8326	10932
Federal Gross Hydro for 1970	7731	5927	7117	8997	12457	8278	7840	8541	9892	11193	8496	8225	5780	6169	8454
Federal Gross Hydro for 1971	6992	5847	8450	14595	14507	11185	12699	11789	15291	14124	11295	8324	6551	6004	10664
Federal Gross Hydro for 1972	7614	6475	7985	14275	14148	15222	13911	10002	14863	15257	12436	10341	9918	7342	11475
Federal Gross Hydro for 1973	7800	6100	8757	9105	8353	7197	6027	6380	7201	7402	8261	10528	10154	7545	7855
Federal Gross Hydro for 1974	6759	6655	10811	16667	14731	13001	13023	13592	14590	16357	13307	7849	5736	5714	11558
Federal Gross Hydro for 1975	7044	5924	7386	11113	11464	11101	10009	8855	10996	12773	12355	9875	9319	6986	9681
Federal Gross Hydro for 1976	8359	8153	12393	15206	13145	9525	13593	11482	14243	10458	11331	8398	7786	6444	10824
Federal Gross Hydro for 1977	7616	5930	7470	6546	7801	4862	5635	7238	7243	7181	6744	11702	10605	10668	7471
Federal Gross Hydro for 1978	6323	6507	7786	10473	8132	10443	11376	9719	10590	9048	9336	6970	6150	5259	8417
Ranked Averages															
Top Ten Percent	7984	7065	10070	15428	13595	12192	12288	12757	14585	14297	11144	9648	8639	7183	11267
Middle Eighty Percent	7570	6569	8273	10909	10530	8723	10295	9802	11122	11053	9701	8706	7422	6650	9101
Bottom Ten Percent	6768	6258	7518	5973	6594	5601	6522	7314	7655	7427	7527	8186	7023	6042	6824

**Table A-27 Federal Gross Hydro - 50 Water Years
PNW Loads and Resource Study
2007 - 2008 Fiscal Years
[86] Rate Case 2000**

7/13/2005

Energy in Megawatts	Oct	Nov	Dec	Jan	Feb	Mar	1-Apr	16-Apr	May	Jun	Jul	1-Aug	16-Aug	Sep	Avg
Federal Gross Hydro for 1929	7164	5867	7394	6085	7096	5910	5886	7260	6910	8937	7562	9738	6985	6109	6997
Federal Gross Hydro for 1930	6496	6570	7592	6123	6621	5689	6907	10413	6336	6474	7837	6807	6440	6137	6763
Federal Gross Hydro for 1931	6374	6653	7800	5434	5353	5671	8201	6584	9132	7046	8025	7524	6993	5680	6818
Federal Gross Hydro for 1932	6467	6559	7034	5481	6795	8906	12487	11797	11796	11327	9173	7050	6104	5563	8152
Federal Gross Hydro for 1933	7268	6398	7633	12762	9833	6748	10430	7639	9941	14291	12746	7823	7472	6457	9230
Federal Gross Hydro for 1934	8552	8616	12659	16103	13393	11100	14286	13393	12600	8228	6777	9775	10099	7135	10745
Federal Gross Hydro for 1935	6156	6027	7200	12142	8907	8011	11245	8582	9085	10262	9373	5937	5433	5758	8210
Federal Gross Hydro for 1936	6821	6187	7505	6663	7323	6418	6689	12339	12530	8992	8801	8096	5635	5873	7791
Federal Gross Hydro for 1937	6532	6296	7437	6089	6529	5424	5717	5520	8447	7069	7522	7262	6510	6176	6669
Federal Gross Hydro for 1938	6646	6738	8034	11323	8063	10416	10470	10144	12786	11157	8325	7381	6656	6385	8933
Federal Gross Hydro for 1939	7279	5960	7266	6151	9722	8319	9645	9868	9733	6351	9430	6943	5781	6021	7696
Federal Gross Hydro for 1940	7212	6372	7383	7180	8440	10135	9650	9815	8354	5655	7783	7956	6324	6144	7628
Federal Gross Hydro for 1941	7400	6250	7412	6968	6671	7032	6235	7857	7943	8567	6777	7291	6088	6525	7107
Federal Gross Hydro for 1942	7276	6754	10324	11240	9043	5885	8180	8476	9621	9796	10169	6874	6240	6016	8417
Federal Gross Hydro for 1943	7090	6039	7356	11478	11499	10462	14331	13152	12437	11669	10472	10103	7915	6719	9831
Federal Gross Hydro for 1944	7308	5937	7404	6176	7395	5337	5935	6845	7491	7640	6717	9619	8204	6119	6902
Federal Gross Hydro for 1945	6601	6628	7016	5546	5963	5722	6396	7434	10305	9438	8990	7056	6045	5592	7106
Federal Gross Hydro for 1946	6459	6148	8479	12482	8496	9453	10574	11735	13402	11491	9574	7632	7108	6297	9234
Federal Gross Hydro for 1947	7376	6293	10319	13837	12688	9142	10077	10055	12041	10972	9139	8999	6177	6729	9682
Federal Gross Hydro for 1948	10106	7893	8611	13964	11094	8014	8966	10994	15243	17064	11564	8803	6695	6500	10648
Federal Gross Hydro for 1949	7756	6088	7266	9995	8162	12502	11158	12437	12327	10806	6450	9876	10259	7328	9212
Federal Gross Hydro for 1950	6681	5814	8276	12392	11029	11591	12968	11706	11831	15289	11395	5707	5172	6024	9842
Federal Gross Hydro for 1951	8640	8535	11260	14974	13903	11114	13083	12650	13588	10039	10617	9083	8570	6714	10923
Federal Gross Hydro for 1952	9414	6786	9268	13429	10314	8687	13222	12551	14501	11425	8635	9870	8784	6676	10112
Federal Gross Hydro for 1953	6805	6031	7557	7287	13666	9886	7913	8248	10343	12288	10653	8861	6337	6063	8855
Federal Gross Hydro for 1954	7726	6452	7732	10628	14426	8896	10377	9806	12554	14037	11649	9992	8608	6768	10022
Federal Gross Hydro for 1955	8497	7261	7900	9653	8925	5629	8662	8612	8572	13206	13047	10772	9745	9610	9266
Federal Gross Hydro for 1956	8274	7707	11119	15230	12689	11256	12297	14228	15534	15083	10848	9742	9400	6898	11456
Federal Gross Hydro for 1957	7888	5975	8226	9391	12205	8987	13165	9389	15167	12746	8373	10199	8753	6575	9690
Federal Gross Hydro for 1958	7077	5930	7365	9532	13546	7924	8739	10988	13774	11790	7986	7818	6495	6195	9012
Federal Gross Hydro for 1959	7585	7024	9269	14877	12819	9877	10790	8582	11602	13238	10802	7735	6693	6185	10015
Federal Gross Hydro for 1960	10963	9036	9672	13311	9287	9331	14906	11304	9698	10345	9567	9927	8417	9453	10245
Federal Gross Hydro for 1961	7621	6602	6881	11787	13484	9730	10312	7474	12483	13993	8826	9374	6373	6438	9551
Federal Gross Hydro for 1962	7344	5836	7113	11785	7675	7043	11946	11802	10061	8987	9949	8547	6787	5988	8444
Federal Gross Hydro for 1963	8203	7238	9186	12414	10113	7277	9215	9021	9368	10447	9700	9745	7877	6155	9002
Federal Gross Hydro for 1964	7237	5971	6996	9197	12215	6438	10092	7931	9862	14172	12079	9417	7682	7195	9077
Federal Gross Hydro for 1965	8572	6660	11555	15997	13565	11200	9940	12926	13018	12470	9523	9972	9234	7640	10936
Federal Gross Hydro for 1966	8051	6736	8086	11266	10833	7251	12149	8976	9033	8129	10079	10005	8886	6757	8852
Federal Gross Hydro for 1967	7148	5951	7540	13225	12626	9064	9674	6274	9856	13484	11857	9691	6578	6220	9423
Federal Gross Hydro for 1968	7817	6489	7984	12216	12518	9660	6961	7351	7382	10625	9792	10047	8871	6968	9005
Federal Gross Hydro for 1969	8727	7850	8906	15015	12886	10309	12302	13075	14965	12358	9639	10352	8918	8330	10942
Federal Gross Hydro for 1970	7738	5933	7124	9006	12465	8288	7851	8550	9901	11202	8504	8230	5783	6171	8462
Federal Gross Hydro for 1971	6998	5853	8457	14607	14522	11195	12713	11801	15307	14138	11306	8328	6554	6006	10674
Federal Gross Hydro for 1972	7621	6481	7992	14287	14162	15238	13926	10011	14879	15272	12451	10347	9923	7345	11486
Federal Gross Hydro for 1973	7807	6106	8764	9114	8361	7203	6034	6390	7209	7409	8267	10534	10160	7549	7862
Federal Gross Hydro for 1974	6765	6661	10821	16684	14748	13012	13035	13604	14605	16373	13322	7853	5739	5717	11569
Federal Gross Hydro for 1975	7050	5930	7393	11124	11473	11113	10018	8863	11007	12785	12368	9881	9324	6990	9690
Federal Gross Hydro for 1976	8366	8160	12403	15220	13159	9536	13605	11493	14258	10467	11344	8402	7790	6446	10834
Federal Gross Hydro for 1977	7624	5936	7477	6557	7805	4867	5642	7250	7252	7187	6749	11709	10611	10674	7478
Federal Gross Hydro for 1978	6329	6514	7793	10482	8141	10451	11389	9729	10602	9056	9346	6974	6153	5261	8425
Ranked Averages															
Top Ten Percent	7992	7072	10079	15443	13610	12203	12300	12769	14600	14311	11157	9653	8643	7186	11278
Middle Eighty Percent	7577	6576	8280	10920	10540	8733	10306	9811	11134	11064	9711	8711	7426	6653	9110
Bottom Ten Percent	6775	6265	7526	5982	6599	5606	6529	7324	7663	7433	7532	8190	7026	6044	6830

**Table A-27 Federal Gross Hydro - 50 Water Years
PNW Loads and Resource Study
2008 - 2009 Fiscal Years
[86] Rate Case 2000**

7/13/2005

Energy in Megawatts	Oct	Nov	Dec	Jan	Feb	Mar	1-Apr	16-Apr	May	Jun	Jul	1-Aug	16-Aug	Sep	Avg
Federal Gross Hydro for 1929	7167	5870	7397	6090	7097	5912	5889	7265	6913	8940	7563	9738	6985	6109	7000
Federal Gross Hydro for 1930	6498	6573	7596	6127	6623	5691	6910	10419	6340	6476	7839	6807	6440	6137	6766
Federal Gross Hydro for 1931	6376	6656	7804	5437	5356	5673	8205	6589	9137	7049	8028	7524	6993	5680	6821
Federal Gross Hydro for 1932	6469	6562	7038	5484	6797	8909	12491	11803	11802	11333	9177	7050	6104	5563	8155
Federal Gross Hydro for 1933	7271	6401	7636	12768	9838	6752	10435	7642	9946	14298	12753	7823	7472	6457	9234
Federal Gross Hydro for 1934	8556	8620	12664	16110	13400	11106	14293	13399	12608	8232	6780	9775	10099	7135	10749
Federal Gross Hydro for 1935	6158	6030	7204	12147	8912	8015	11252	8585	9090	10267	9378	5937	5433	5758	8214
Federal Gross Hydro for 1936	6824	6190	7509	6667	7327	6420	6692	12343	12536	8997	8805	8096	5635	5873	7794
Federal Gross Hydro for 1937	6534	6299	7441	6093	6531	5426	5720	5523	8450	7072	7525	7262	6510	6176	6671
Federal Gross Hydro for 1938	6649	6741	8037	11327	8067	10420	10475	10148	12793	11162	8329	7381	6656	6385	8937
Federal Gross Hydro for 1939	7282	5963	7269	6155	9726	8321	9648	9872	9738	6355	9433	6943	5781	6021	7699
Federal Gross Hydro for 1940	7215	6376	7386	7185	8443	10138	9654	9820	8359	5658	7786	7956	6324	6144	7631
Federal Gross Hydro for 1941	7404	6253	7416	6972	6673	7035	6238	7861	7947	8570	6780	7291	6088	6525	7109
Federal Gross Hydro for 1942	7279	6757	10328	11244	9047	5888	8183	8481	9625	9801	10173	6874	6240	6016	8421
Federal Gross Hydro for 1943	7093	6041	7359	11482	11502	10467	14336	13157	12444	11674	10476	10103	7915	6719	9834
Federal Gross Hydro for 1944	7311	5940	7407	6181	7397	5339	5938	6850	7494	7643	6719	9619	8204	6119	6905
Federal Gross Hydro for 1945	6603	6631	7020	5549	5965	5724	6400	7437	10310	9442	8994	7056	6045	5592	7108
Federal Gross Hydro for 1946	6462	6151	8482	12486	8500	9456	10578	11740	13409	11497	9579	7632	7108	6297	9237
Federal Gross Hydro for 1947	7378	6296	10322	13842	12693	9147	10081	10059	12047	10978	9143	8999	6177	6729	9686
Federal Gross Hydro for 1948	10110	7897	8614	13969	11098	8018	8970	10999	15250	17072	11570	8803	6695	6500	10653
Federal Gross Hydro for 1949	7759	6091	7269	10000	8166	12506	11162	12442	12332	10811	6453	9876	10259	7328	9215
Federal Gross Hydro for 1950	6684	5816	8279	12397	11033	11596	12972	11711	11837	15296	11401	5707	5172	6024	9845
Federal Gross Hydro for 1951	8643	8538	11264	14980	13909	11120	13089	12656	13595	10044	10623	9083	8570	6714	10927
Federal Gross Hydro for 1952	9418	6789	9271	13434	10318	8692	13226	12556	14509	11430	8639	9870	8784	6676	10116
Federal Gross Hydro for 1953	6808	6034	7561	7290	13670	9890	7918	8251	10348	12294	10658	8861	6337	6063	8858
Federal Gross Hydro for 1954	7729	6455	7735	10633	14432	8901	10381	9809	12560	14044	11655	9992	8608	6768	10026
Federal Gross Hydro for 1955	8501	7264	7903	9658	8928	5631	8666	8615	8576	13212	13054	10772	9745	9610	9270
Federal Gross Hydro for 1956	8277	7710	11123	15237	12695	11260	12302	14234	15541	15090	10853	9742	9400	6898	11460
Federal Gross Hydro for 1957	7892	5978	8229	9396	12209	8989	13171	9392	15174	12752	8377	10199	8753	6575	9694
Federal Gross Hydro for 1958	7079	5933	7368	9537	13550	7928	8743	10992	13781	11796	7989	7818	6495	6195	9015
Federal Gross Hydro for 1959	7589	7027	9273	14883	12825	9882	10795	8586	11608	13245	10807	7735	6693	6185	10019
Federal Gross Hydro for 1960	10968	9040	9676	13317	9292	9335	14913	11309	9703	10350	9573	9927	8417	9453	10249
Federal Gross Hydro for 1961	7624	6605	6884	11792	13491	9734	10317	7477	12490	14001	8830	9374	6373	6438	9555
Federal Gross Hydro for 1962	7347	5839	7116	11790	7680	7046	11950	11807	10067	8992	9952	8547	6787	5988	8447
Federal Gross Hydro for 1963	8206	7241	9190	12419	10117	7281	9218	9026	9372	10451	9705	9745	7877	6155	9006
Federal Gross Hydro for 1964	7240	5974	6999	9202	12220	6441	10095	7934	9867	14179	12085	9417	7682	7195	9080
Federal Gross Hydro for 1965	8576	6663	11559	16004	13570	11204	9943	12931	13025	12476	9527	9972	9234	7640	10940
Federal Gross Hydro for 1966	8054	6739	8089	11271	10838	7254	12154	8980	9038	8134	10083	10005	8886	6757	8856
Federal Gross Hydro for 1967	7151	5954	7543	13230	12631	9069	9679	6277	9861	13491	11864	9691	6578	6220	9427
Federal Gross Hydro for 1968	7820	6492	7988	12221	12523	9665	6965	7355	7386	10630	9797	10047	8871	6968	9009
Federal Gross Hydro for 1969	8730	7853	8910	15021	12892	10312	12307	13081	14972	12364	9643	10352	8918	8330	10947
Federal Gross Hydro for 1970	7741	5936	7127	9010	12468	8293	7855	8554	9906	11206	8508	8230	5783	6171	8465
Federal Gross Hydro for 1971	7000	5856	8460	14612	14528	11199	12718	11806	15314	14144	11311	8328	6554	6006	10678
Federal Gross Hydro for 1972	7624	6484	7995	14292	14168	15245	13932	10015	14885	15279	12459	10347	9923	7345	11490
Federal Gross Hydro for 1973	7810	6109	8767	9118	8365	7206	6038	6394	7213	7413	8270	10534	10160	7549	7865
Federal Gross Hydro for 1974	6768	6663	10826	16692	14755	13017	13040	13610	14612	16380	13329	7853	5739	5717	11573
Federal Gross Hydro for 1975	7053	5932	7396	11129	11477	11119	10022	8867	11012	12790	12375	9881	9324	6990	9693
Federal Gross Hydro for 1976	8369	8164	12407	15227	13164	9540	13610	11497	14265	10471	11351	8402	7790	6446	10838
Federal Gross Hydro for 1977	7627	5939	7480	6561	7807	4869	5646	7255	7256	7190	6751	11709	10611	10674	7480
Federal Gross Hydro for 1978	6332	6517	7796	10486	8144	10455	11395	9733	10608	9060	9350	6974	6153	5261	8428
Ranked Averages															
Top Ten Percent	7995	7075	10082	15449	13616	12208	12305	12774	14607	14318	11162	9653	8643	7186	11282
Middle Eighty Percent	7580	6579	8284	10924	10544	8736	10311	9816	11139	11069	9715	8711	7426	6653	9113
Bottom Ten Percent	6777	6268	7529	5985	6601	5608	6532	7329	7667	7436	7535	8190	7026	6044	6832