

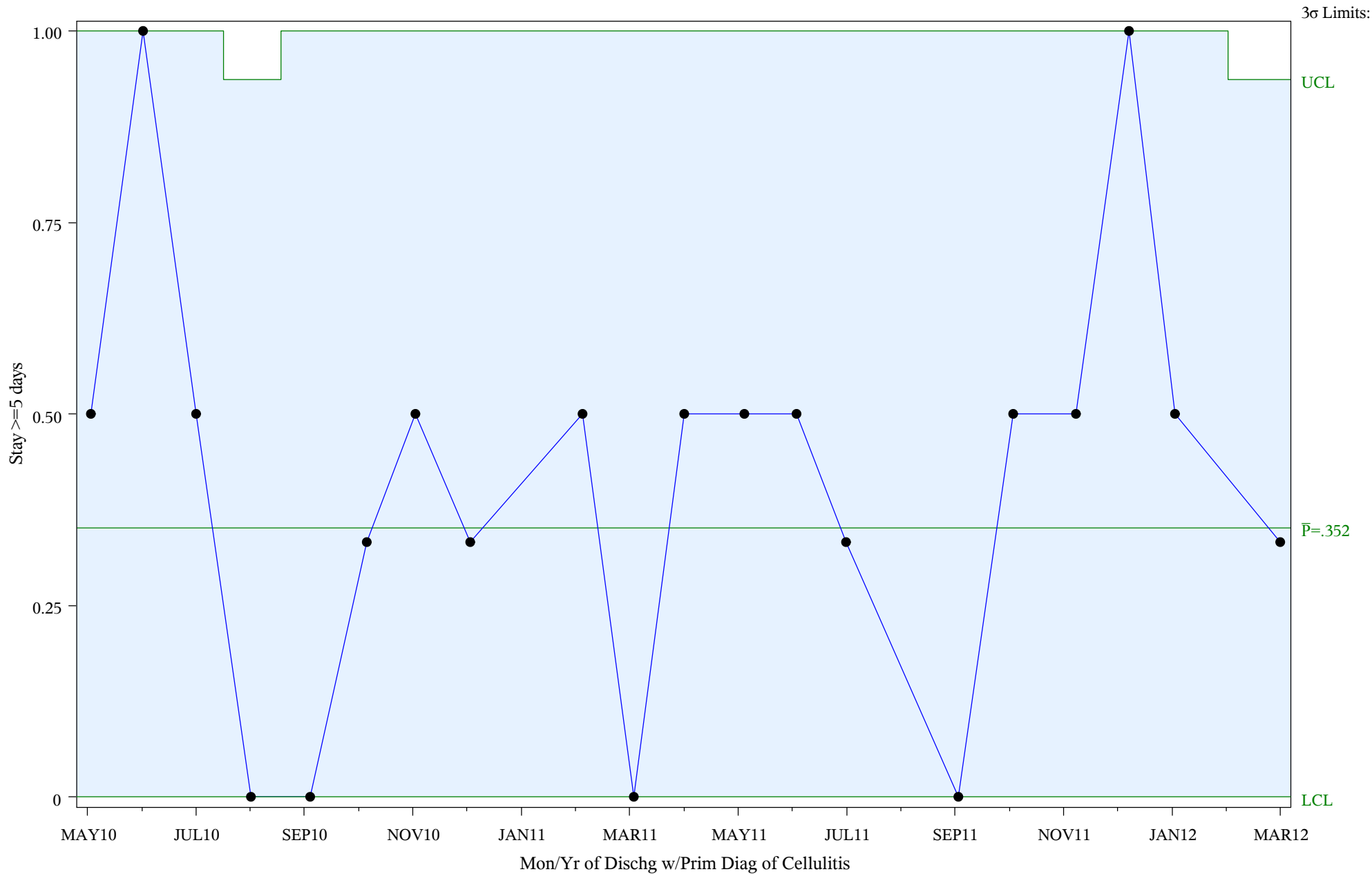
P Chart for Medical Management of Cellulitis (#5086)

Time Period: Apr 2010 - Mar 2012

Denom=All Admit w/Prim Diagnosis of Cellulitis, Num=Stay >=5 days

Chart created: Tuesday, 24JUL2012

hospital=Quentin N Burdick - Aberdeen



Subgroup Sizes: Min n = 1 Max n = 6

Source: ORYX2.rate5086

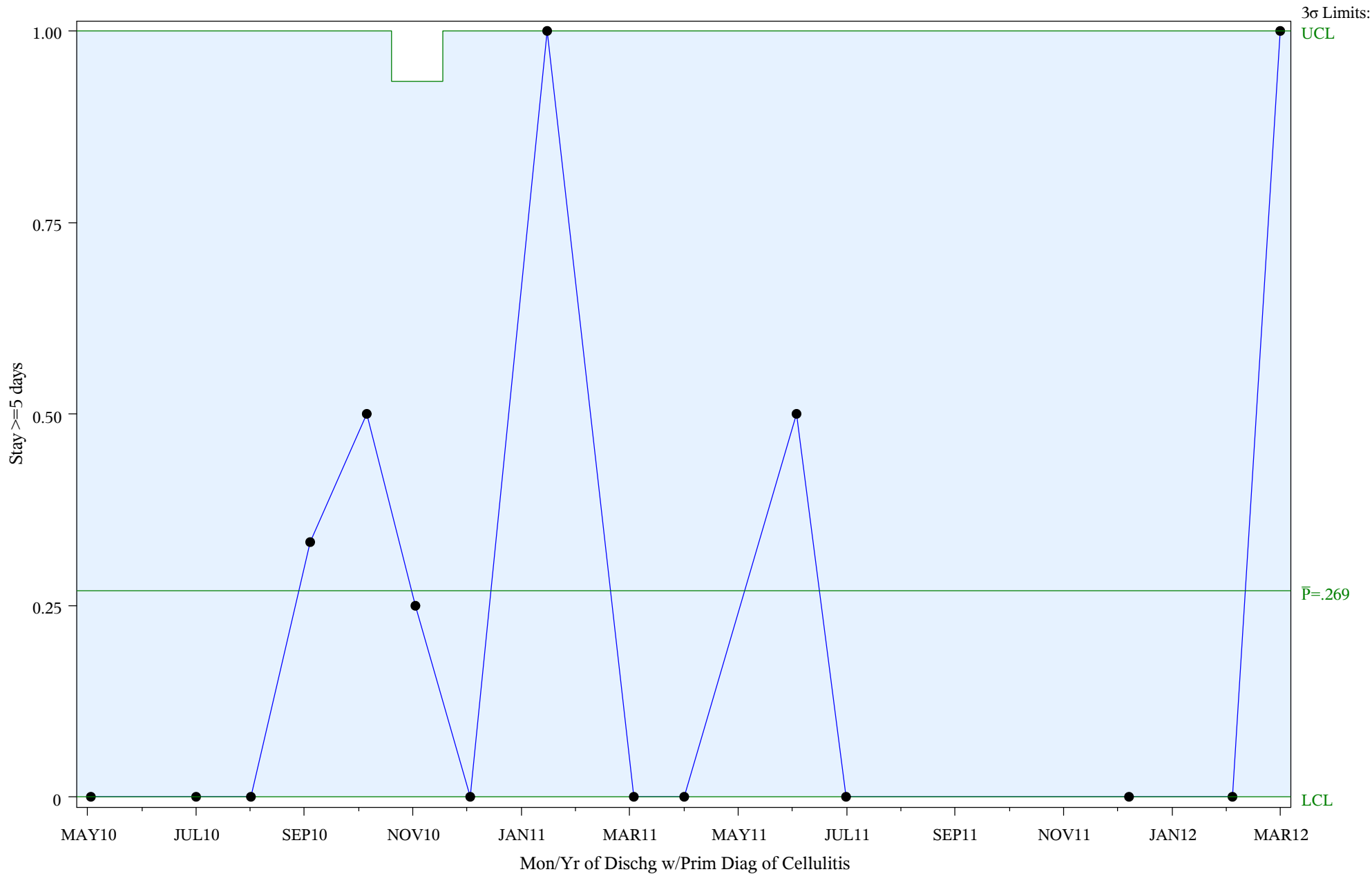
P Chart for Medical Management of Cellulitis (#5086)

Time Period: Apr 2010 - Mar 2012

Denom=All Admit w/Prim Diagnosis of Cellulitis, Num=Stay >=5 days

Chart created: Tuesday, 24JUL2012

hospital=Winnebago - Aberdeen



Subgroup Sizes: Min n = 1 Max n = 4

Source: ORYX2.rate5086

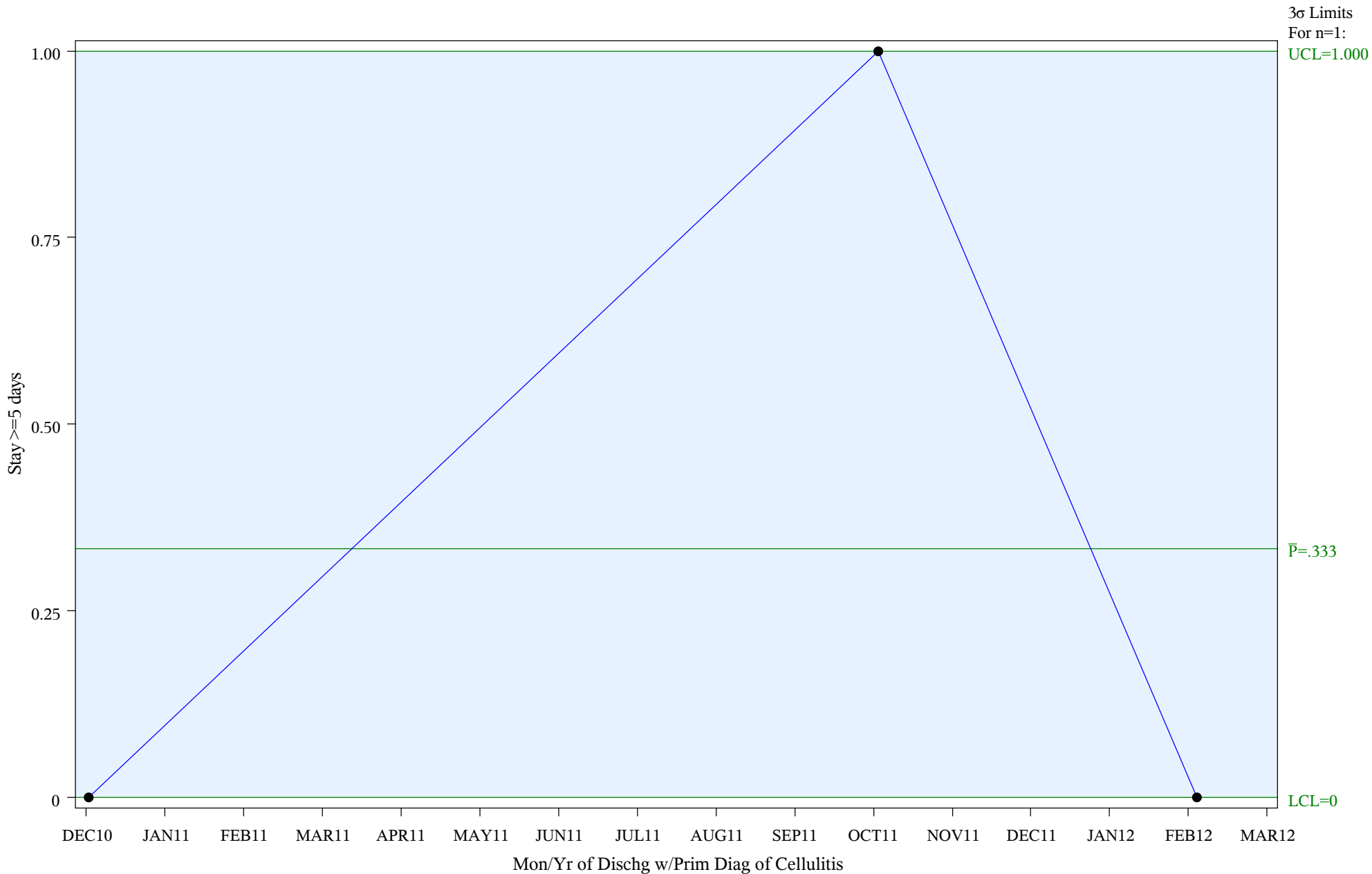
P Chart for Medical Management of Cellulitis (#5086)

Time Period: Apr 2010 - Mar 2012

Denom=All Admit w/Prim Diagnosis of Cellulitis, Num=Stay >=5 days

Chart created: Tuesday, 24JUL2012

hospital=Zuni - Albuquerque



Subgroup Sizes: ● n = 1

Source: ORYX2.rate5086

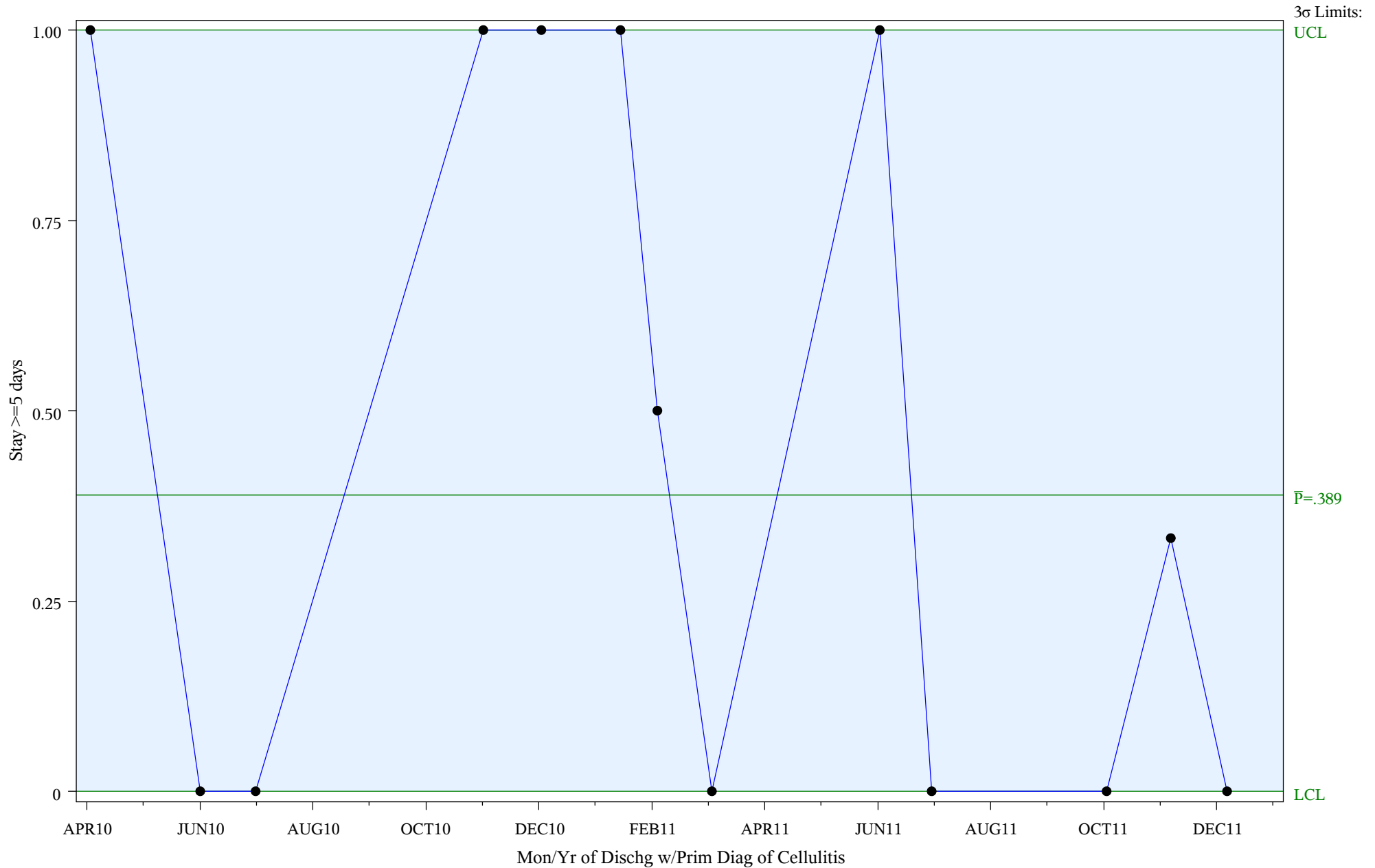
P Chart for Medical Management of Cellulitis (#5086)

Time Period: Apr 2010 - Mar 2012

Denom=All Admit w/Prim Diagnosis of Cellulitis, Num=Stay >=5 days

Chart created: Tuesday, 24JUL2012

hospital=Barrow - Alaska



Subgroup Sizes: Min n = 1 Max n = 3

Source: ORYX2.rate5086

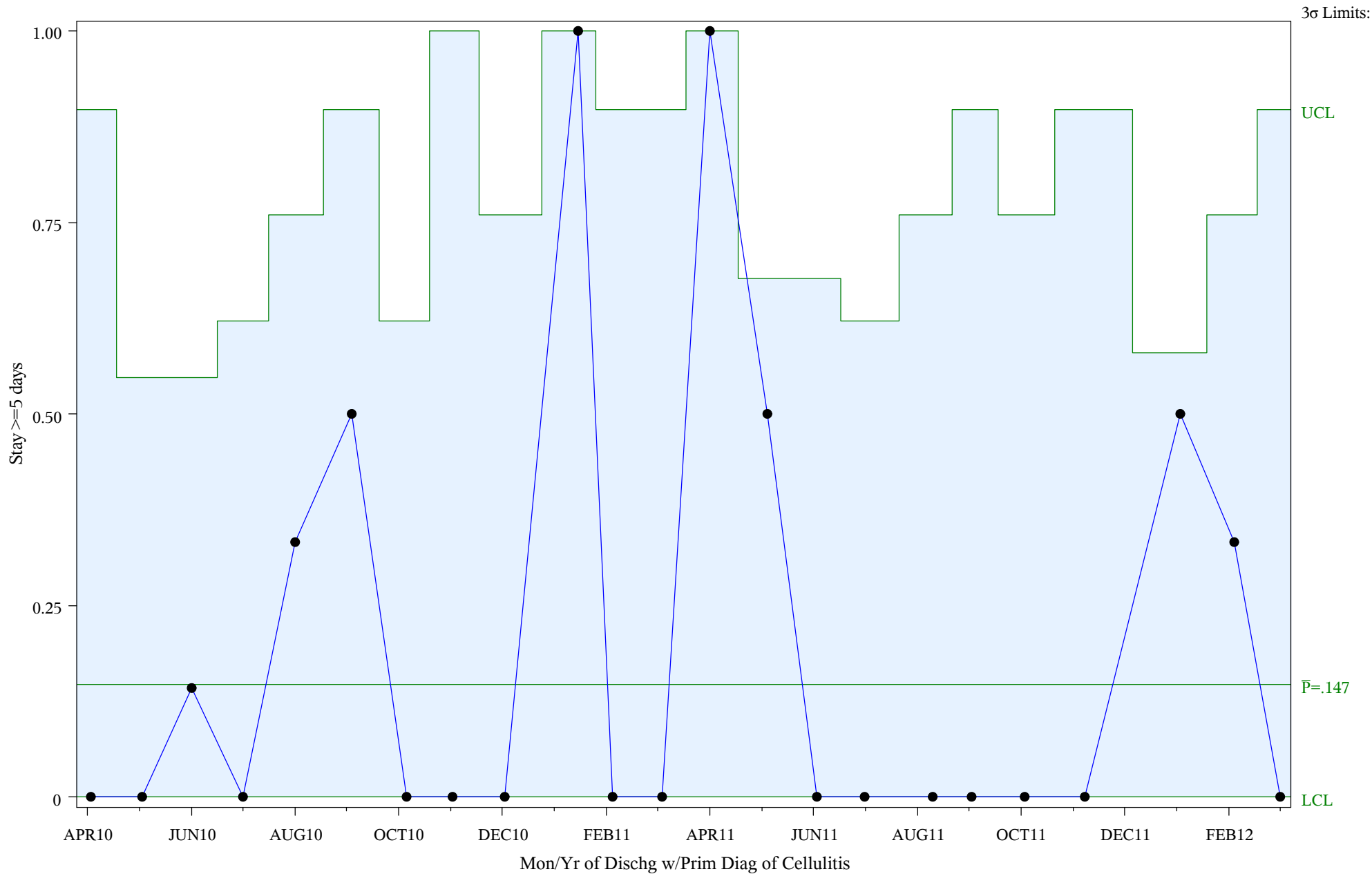
P Chart for Medical Management of Cellulitis (#5086)

Time Period: Apr 2010 - Mar 2012

Denom=All Admit w/Prim Diagnosis of Cellulitis, Num=Stay >=5 days

Chart created: Tuesday, 24JUL2012

hospital=YK Health - Alaska



Subgroup Sizes: Min n = 1 Max n = 7

Source: ORYX2.rate5086

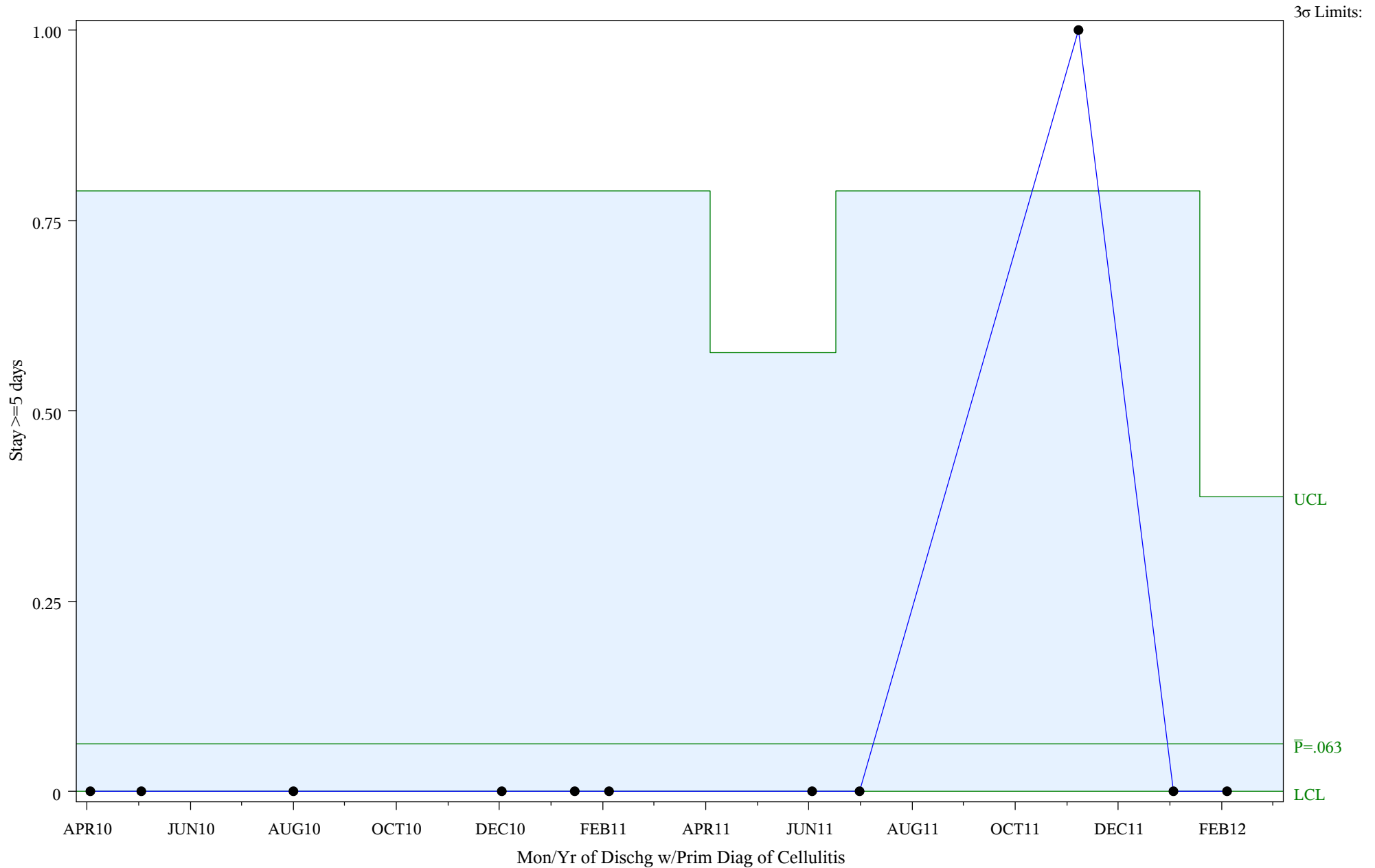
P Chart for Medical Management of Cellulitis (#5086)

Time Period: Apr 2010 - Mar 2012

Denom=All Admit w/Prim Diagnosis of Cellulitis, Num=Stay >=5 days

Chart created: Tuesday, 24JUL2012

hospital=Maniilaq - Alaska



Subgroup Sizes: Min n = 1 Max n = 5

Source: ORYX2.rate5086

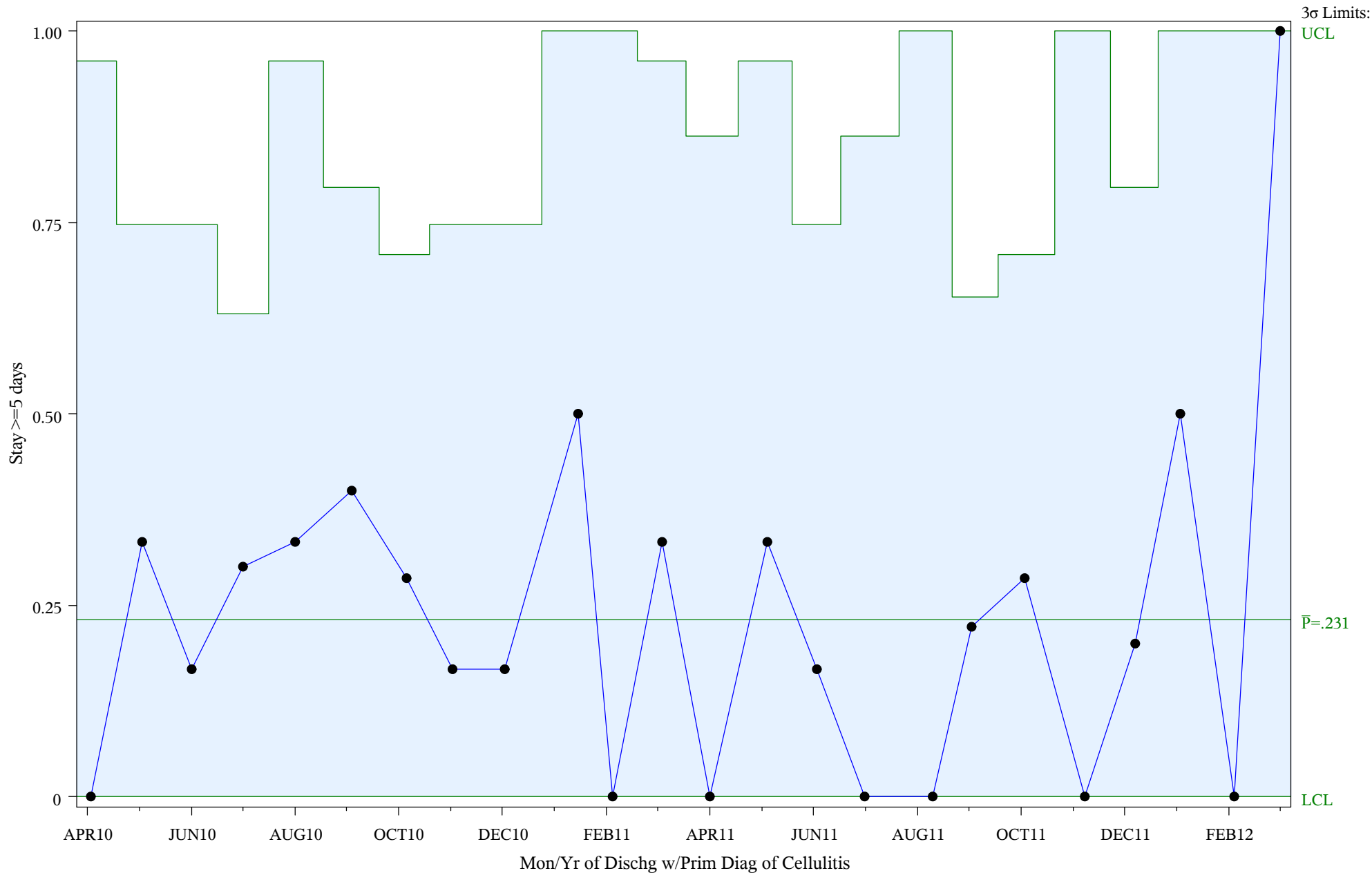
P Chart for Medical Management of Cellulitis (#5086)

Time Period: Apr 2010 - Mar 2012

Denom=All Admit w/Prim Diagnosis of Cellulitis, Num=Stay >=5 days

Chart created: Tuesday, 24JUL2012

hospital=Shiprock - Navajo



Subgroup Sizes: Min n = 1 Max n = 10

Source: ORYX2.rate5086